

POWER ROLLERS

PR-1, PR-2, PR-3.

EDITION No: 7119 - 06 - 99

EC DECLARATION OF CONFORMITY
conforming to EEC Directive 98/37/EC

We,

of TWOSE OF TIVERTON LIMITED, 6 Chinon Court, Lower Moor Way, Tiverton Business Park, Tiverton, Devon, EX16 6SS.

declare that under our sole responsibility that the product (type)

This machine is a **power roller**, one of a range of machines for soil preparation.

Serial No. & Date:

Manufactured by the above Company/*

.....
(*insert business name and full address if not stated above)

complies with the required provisions of the Directive 98/37/EC and conforms with European Norm. BS EN 292

Part 1: 1991 Safety of Machinery - Terminology, Methodology

Part 2: 1991 Safety of Machinery - Technical Specifications

and other national standards associated with its design and construction as listed in the Technical File.

Signed Adnan Longstaff

on behalf of TWOSE OF TIVERTON LIMITED Responsible Person

Status DIRECTOR OF ENGINEERING

Date 13 February 2001

**THIS MANUAL IS TO BE HANDED TO THE CUSTOMER BEFORE
THE MACHINE IS TO BE USED FOR THE FIRST TIME**



**TWOSE OF TIVERTON LIMITED
6 CHINON COURT
LOWER MOOR WAY
TIVERTON BUSINESS PARK
TIVERTON
DEVON
EX16 6SS**

**TEL: (01884) 253691
FAX: (01884) 255189**

All dimensions and capacities mentioned in this book are approximate. In pursuance of the Companies policy of constant development, the right is reserved to depart, without notice, from any detail illustrated or specified in this book, without incurring the obligation to provide such modifications on machines previously delivered.

No responsibility will be accepted by Twose of Tiverton Limited for any injury, damage or loss arising from the improper use or lack of maintenance of any machinery supplied by them or from any failure of the user to comply with all instructions published by Tractor or Loader manufacturers, particularly with regard to maximum load capacities, tyre pressures and stability, or with instructions and regulations pertaining to Tractor Cabs.

INDEX

FLY SHEET	1
HEADER SHEET	2
INDEX	3
SPECIFICATION	4
GENERAL INFORMATION	5
SAFETY NOTES AND WARNINGS	6
ABOUT THIS MACHINE	7
HEALTH AND SAFETY	8
HEALTH AND SAFETY CONTINUED	9
NOTES	10
GENERAL INSTRUCTIONS	11
GENERAL INSTRUCTIONS CONTINUED	12
GENERAL FITTING INSTRUCTIONS	13
GENERAL FITTING INSTRUCTIONS CONTINUED	14
BEFORE COMMENCING WORK	15
OPERATIONAL NOTES	16
ROUTINE MAINTENANCE	17
PARTS LIST	18
MAIN FRAME AND ROLLER DRUM (24" DIA) - DIAGRAM	19
MAIN FRAME AND ROLLER DRUM (24" DIA)	20
HYDROSTATIC TRANSMISSION - DIAGRAM	21
HYDROSTATIC TRANSMISSION	22
HYDROSTATIC TRANSMISSION CONTINUED - DIAGRAM	23
HYDROSTATIC TRANSMISSION CONTINUED	24
HANDLEBAR ASSEMBLY - DIAGRAM	25
HANDLEBAR ASSEMBLY	26
ANTI-KICK DEVICE AND REAR SKID ROLLER - DIAGRAM	27
ANTI-KICK DEVICE AND REAR SKID ROLLER	28
TOWING HITCH - DIAGRAM	29
TOWING HITCH	30
MAIN FRAME AND ROLLER DRUM (18" DIA) - DIAGRAM	31
MAIN FRAME AND ROLLER DRUM (18" DIA)	32
SEAT ASSEMBLY AND FOOTREST - DIAGRAM	33
SEAT ASSEMBLY AND FOOTREST	34
ROLLER CONNECTING CHANNEL - DIAGRAM	35
ROLLER CONNECTING CHANNEL	36
TRANSFERS - DIAGRAM	37
TRANSFERS	38

SPECIFICATION

	* TRIPLE GANG MODEL	* IN-LINE MODEL	PEDESTRIAN MODEL
ROLLING WIDTH	180cm (71in)	62cm (24in)	56cm (22in)
ROLLING WEIGHT	310kg (683lb)	250kg (550lb)	190kg (419lb)
BALLAST WEIGHT	646kg (1425lb)	493kg (1088lb)	340kg (750lb)

* EXCLUDES WEIGHT OF DRIVER

GENERAL INFORMATION

NOTE:- The provision of this information is a requirement of the Health & Safety at Work Act 1974.

NOTE:- This handbook has been designed to help the operator and service/mechanic to use and understand the machine fully, safely and efficiently, bearing in mind the Health & Safety requirements and the new CE requirements which come into force from January 1st 1995.

NOTE:- The handbook/manual will be supplied in a waterproof plastic outer cover to prevent damage from rain, condensation etc. The cover of the handbook will include its own part number, which includes information as to machine type and issue date of manual in question.

DANGER

NOTE:- It is very important that the handbook/manual has been read thoroughly - throughout, and is completely understood before attempting to attach or use machine in any way.

CAUTION: When ordering spares, please state clearly:-

- (a) Machine type and model No.
- (b) Part No. of component.
- (c) Description of component.
- (d) Quantity required.
- (e) Full address to which spares are to be sent.
- (f) Method of delivery required.

CAUTION:- Always insist on genuine and correct spare parts.

NOTE:- Further copies of this handbook/manual can be obtained from:-

TWOSE OF TIVERTON LIMITED
6 CHINON COURT
LOWER MOOR WAY
TIVERTON BUSINESS PARK
TIVERTON
DEVON
EX16 6SS

TEL: 01884 253691
FAX: 01884 255189

SAFETY NOTES AND WARNINGS

Throughout the handbook the following sub headings are used to draw attention to various points of importance.



DANGER
WARNING

This is to draw attention to very important instructions which MUST be followed precisely to avoid injury or death.

CAUTION

This is used to draw attention to instructions which MUST be followed to avoid damage to operator, machine, process or the environment.

NOTE:-

This is used to highlight points used for supplementary information.

ABOUT THIS MACHINE

This machine is one of a range of small powered rollers. The range consists of ; a pedestrian controlled model, a triple gang model and an in-line model.

It is intended to be operated manually through a hydrostatic drive unit. The three models in the range comprise of interchangeable units.

The purpose for its production and its sole intention is to roll; sports and recreation grounds, parks, and footpaths etc. The machine is not intended to be worked on any slope, the smooth drum roller is incapable of supplying enough traction to do this safely.

AT NO TIME must this machine be used for anything other than, or to do any job - other than that for which it has been designed (see note above).

HEALTH AND SAFETY



DANGER
WARNINGS

Never attempt to assemble, couple up, or operate machinery until you understand fully the function, controls safety precautions required, as shown in the operators manual.

CAUTION

Be aware of warning stickers and instruction stickers on machine as care must be taken and instructions obeyed.

CAUTION

Contact your dealer should you need advice, assistance, or if you do not understand the manual or machine. "NEVER ASSUME" - if not sure - ASK.

CAUTION

Machine **MUST NOT** be altered or modified in any way - without permission - No liability will be accepted in respect of a machine that has been modified without manufacturers permission.



DANGER
WARNING

Never drive machinery at speeds that could cause danger to other persons or properties, or in a manner that may cause accidents.



**DANGER
WARNING**

Always be aware of your surroundings - and operate machinery accordingly. Beware of confined-tight areas, low height restrictions, buildings and overhangs etc. Also drive and operate bearing in mind weather conditions such as sun, rain, ice, snow, wind etc. (Make allowances in all situations).

CAUTION

Never carry “passengers” on machinery or on tractor. Ensure bystanders/onlookers are kept well away from operational area of apparatus.

CAUTION

Never allow children to play on, or around, parked machinery.

CAUTION

Never wear loose fitting or ragged clothing which could get caught in machinery or controls.

CAUTION

Always dispose of discarded or worn out parts thoughtfully - by disposing of them in an approved and specified legal scrap site, bin or skip.

CAUTION

Worn out and spent waste oil, grease and other obnoxious substances must always be disposed of in suitable and legally approved dumping containers suitable for waste in question.

NOTES

AMENDMENT

DATE

DETAILS

GENERAL INSTRUCTIONS



DANGER WARNINGS

1. Before attaching any machine to a tractor or loader make sure that implement is still standing firmly on good solid level site as it will be, providing unit was previously parked correctly.
- Check that any wheels are 'chocked' correctly and that supports/props are in position where necessary to prevent booms etc. dropping.
2. Before and during the manoeuvring of the tractor or vehicle in order to attach machinery/implements, - make sure that No other persons are in the vicinity. Keep other persons well clear and make known your intentions, all the while keeping a sharp lookout whilst reversing and aligning machines for coupling up.
3. Always secure tractor into selected position by ensuring that brakes are applied correctly in order to prevent vehicle moving off on its own to cause injury and damage.
4. Make sure that the lift arms and top link ball ends of the tractor are properly fitted to the machine/implement by using correct adapter sleeves where necessary, and that retaining pins of the correct type are used on all three point linkage points. Secure pins with relevant pin and ring assembly.
5. If the machine is of the drawbar type - check that the hitch on the tractor is in good condition and that the hitch pin used is of the correct size and type, and is properly secured when fitted.
6. Should it become necessary to make any adjustments or service on machine while raised on the tractor linkage, or raised on a front end loader - trestles or suitable supports MUST be positioned to support machine to prevent accidental dropping of lift arms, loader arms of mechanical failure.
[MACHINE MUST ALWAYS BE PROPPED AND CHOCKED].

7. Never attempt to work on, adjust or service repair machinery of any kind whilst it is still running or working. Always stop the machine and STOP THE TRACTOR ENGINE - before any service/repairs begin.
(SWITCH OFF TRACTOR ENGINE BEFORE LEAVING TRACTOR SEAT).
8. In transit always use transport stays or locking devices where provided. If, as in the case of some longer machines, the unit is transported lengthways - make sure that the front of the tractor is suitably ballasted to maintain stability.
A method of achieving this would be to add suitable weights to a correctly specified and fitted front weight frame.
9. Always use machines in a sensible and reasonable manner and do not attempt to use them in work for which they are not intended. Avoid overloading and abusing them as this can cause damage to machine and tractor and can be very dangerous.
10. When unhitching/detaching a machine from a tractor three point linkage or from a front end loader ensure that any standard or legs are securely positioned and that the machine is parked where it will not be a safety hazard or cause annoyance to others.
Make sure that chosen 'parking site' is a firm and level site.
11. Carry out regular periodic maintenance. - Always with safety in mind.
12. Ensure regular maintenance procedures are maintained for the lifetime of the machine.
13. **HEATH AND SAFETY RULES AND REGULATIONS MUST BE ADHERED TO IN ALL AGRICULTURAL RESPECTS.**

- - - * - - -

GENERAL FITTING INSTRUCTIONS

When ordered for Pedestrian operation the Roller will normally be supplied in an assembled condition, but the following instructions have been compiled to cover the possibility that the “anti-kick” device and skid roller may have been dismantled.

PEDESTRIAN MODEL ONLY

1. With the Roller standing on firm level ground and with the engine switched off fit the “anti-kick” device to the front of the Roller using the bolts and nuts provided. Tighten DEAD TIGHT.
2. Fit the rear skid roller to the rear of the Pedestrian Roller main frame using the clamping plates and setscrews provided. Tighten DEAD TIGHT.

IMPORTANT NOTE:

The anti-kick device and rear skid roller will not normally be supplied with inline or triple gang models, but can be supplied as an OPTIONAL EXTRA. When converting from Pedestrian to inline or triple gang mode the anti-kick device and rear skid roller should be removed.

It is essential that the anti-kick device and rear skid roller are fitted before use when operating the Roller in Pedestrian mode.

3. The Pedestrian Roller can be water ballasted as follows:- Align the drain filler plug with either of the holes at the top of the roller side plates, remove the plug and fill to the appropriate level. Replace the plug and tighten securely.

Continue as in “Before Commencing Work”.

GENERAL FITTING INSTRUCTIONS
(CONTINUED)

INLINE MODEL ONLY

4. Fit the front section of the towing hitch with the block offset downwards, to the rear of the front roller using the bolts and washers provided. Tighten DEAD TIGHT.
5. Fit the rear section of the towing hitch to the inline roller using the nut provided. Tighten until firm resistance is felt.
6. Fit the cranked seat bars to the seat, and fit to the inline roller using the screws and setscrews provided. Tighten DEAD TIGHT.
7. Couple the driving and inline rollers using the towing pins and linch pins provided.
8. The Inline roller may be water ballasted as follows:- Remove the drain/filler plug from the end plate of the roller and fill to the required level. Replace the plug and tighten.

Continue as in "Before Commencing Work".

TRIPLE GANG MODEL

9. Fit the front section of the towing hitch with the block offset downwards, to the rear of the front roller using the bolts and washers provided. Tighten DEAD TIGHT.
10. Fit the rear section of the towing hitch to the centre of the Connecting Channel and secure using the nut provided. Tighten until firm resistance is felt.
11. Fit the rear gang rollers to the Connecting Channel using the nuts provided and tighten until firm resistance is felt.
12. Fit the cranked seat bars to the Connecting Channel and secure using the setscrews provided. Tighten DEAD TIGHT.
13. Fit the seat to the cranked bars and secure using the screws provided. Tighten DEAD TIGHT.
14. Couple the driving and gang rollers using the towing pin and linch pin provided.

Continue as in "Before Commencing Work".

BEFORE COMMENCING WORK

IMPORTANT

Before commencing work, and with the engine SWITCHED OFF institute the following pre-operational check.

1. Fill the engine fuel tank with regular petrol NOT PETROL/OIL mixture.
2. Fill the engine to the correct level with SAE10-W-30 or 10W-40 engine oil.
3. Fill the Hydrostatic transmission housing to the correct level with 15W-30 motor oil or compatible good quality grade motor oil.
IMPORTANT: When filling the Transmission housing ensure that the “hot and cold running levels” are correctly observed.
4. Ensure that all bolts, nuts, and setscrews are tightened DEAD TIGHT and that locking devices are fitted where applicable.
5. To adjust the position of the steering handle, slacken the clamping and pivot setscrews at both sides of the roller housing to allow the steering handle to be re-positioned. When the desired position has been reached, retighten the clamping and pivot setscrews DEAD TIGHT.

Continue as in Operational Notes.

OPERATIONAL NOTES

STARTING THE ENGINE:

The correct sequence for starting the engine is as follows:-

1. Engage the “free wheel” lever which is located at the front of the Transmission Housing.
2. Turn the fuel valve ‘ON’.
3. Set choke if required.
4. Set the ignition switch to ‘ON’
5. Slightly raise the engine throttle lever.
6. Pull the starter rope and return it slowly.
7. As the engine warms up gradually return choke.

COMMENCING WORK

IMPORTANT SAFETY FIRST

Always approach the work to be done with caution!

Always drive with care and be aware of any person(s) who must remain in the working area.

Never drive at unmanageable speeds or on slopes.

Never replenish fuel during operation.

FORWARD/REVERSE DRIVE

1. Select required throttle speed.
2. Ensure that the hand control lever is in the NEUTRAL position.
3. Slowly release the “free wheel” lever.
4. Raise handgrip ‘STOP-RAIL’ at Handlebar.
5. Select forward or reverse drive - on hand controller, (move lever slowly) as required.

STOPPING THE ROLLER: To stop the Roller in normal conditions, Slowly move the hand control to the neutral position.

DANGER

IMPORTANT

To stop the Roller IN AN EMERGENCY Release ‘STOP-RAIL’ at Handlebar (by simply releasing grip).

See Maintenance Notes.

ROUTINE MAINTENANCE

IMPORTANT: Before carrying out any maintenance on the Roller, always ensure that the engine is SWITCHED OFF.

Check the contents of the fuel tank and 'top up' if necessary with regular petrol NOT PETROL/OIL mixture.

Check the level and condition of the oil in the engine and 'top up' if necessary using SAE10W-30 or 10W-40 engine oil.

Check the level and condition of the oil in the Hydrostatic Transmission and 'top up' if necessary using 15W-30 or compatible motor oil (See "Before Commencing Work").

Liberal grease all hinged and moving parts where applicable, with a good quality grease.

Liberal oil, and check the tension of the driving chain together with its' general condition. See Note below.

DAILY

ADJUSTING THE TENSION OF THE DRIVING CHAINS

Main chain 'Drum to Idler'

1. Slacken the 2, M12 Stiffnuts (Ref. Z, page 20) holding the bearing housing to main frame, and adjust bearing housing upwards away from drum to tighten chain.
2. Re-tighten 2, M12 stiffnuts (Ref. Z) with chain tension set to give a deflection of no more than 6mm (1/4").

Short chain - Hydrostatic unit to Idler

3. Slacken uppermost M12 locknuts (Ref. D page 21), adjust lower nuts (Ref. D) to pivot/raise engine mounting plate and so tighten chain..
4. With chain set to required tension, the uppermost nuts (Ref. D) should now be re-tightened to secure platform.
5. Check all nuts/bolts etc. are tight.
6. Ensure all guards are fitted and secure.

For all operating and maintenance details of the Suzuki engine, please refer to literature issued by the engine manufacturers (as supplied with this machine) or contact your local Suzuki dealer.

PARTS LIST

Always order Two genuine spares for your machine. They are correctly designed to give the best operational results.

When ordering spare parts, please specify:-

Type and Serial Number of machine

Part number, description and quantity of spares required.

Always make sure that you have ordered a sufficient quantity to complete the job.

Always make sure that you have ordered the correct parts. In some instances (eg Hydraulic Rams) parts or assemblies are, in the course of time, modified due to introduction of new materials, or improved design.

Always state by what means you wish the goods to be sent. In the absence of specific instructions consignments will be sent by post or railways goods service, if it is not possible to deliver by our own transport.

Always State the number of our Invoice or Sales Slip, and the reason for return should it become necessary to return any items for exchange or credit.

Remember that we operate a Service Department for Hydraulic Equipment which means that we can normally supply, by return, complete serviced and tested replacements.

WARRANTY AND SPARE PARTS

all enquiries regarding these machines and orders for spare parts must be addressed to:-

TWOSE OF TIVERTON LIMITED

6 Chinon Court

Lower Moor Way

Tiverton Business Park

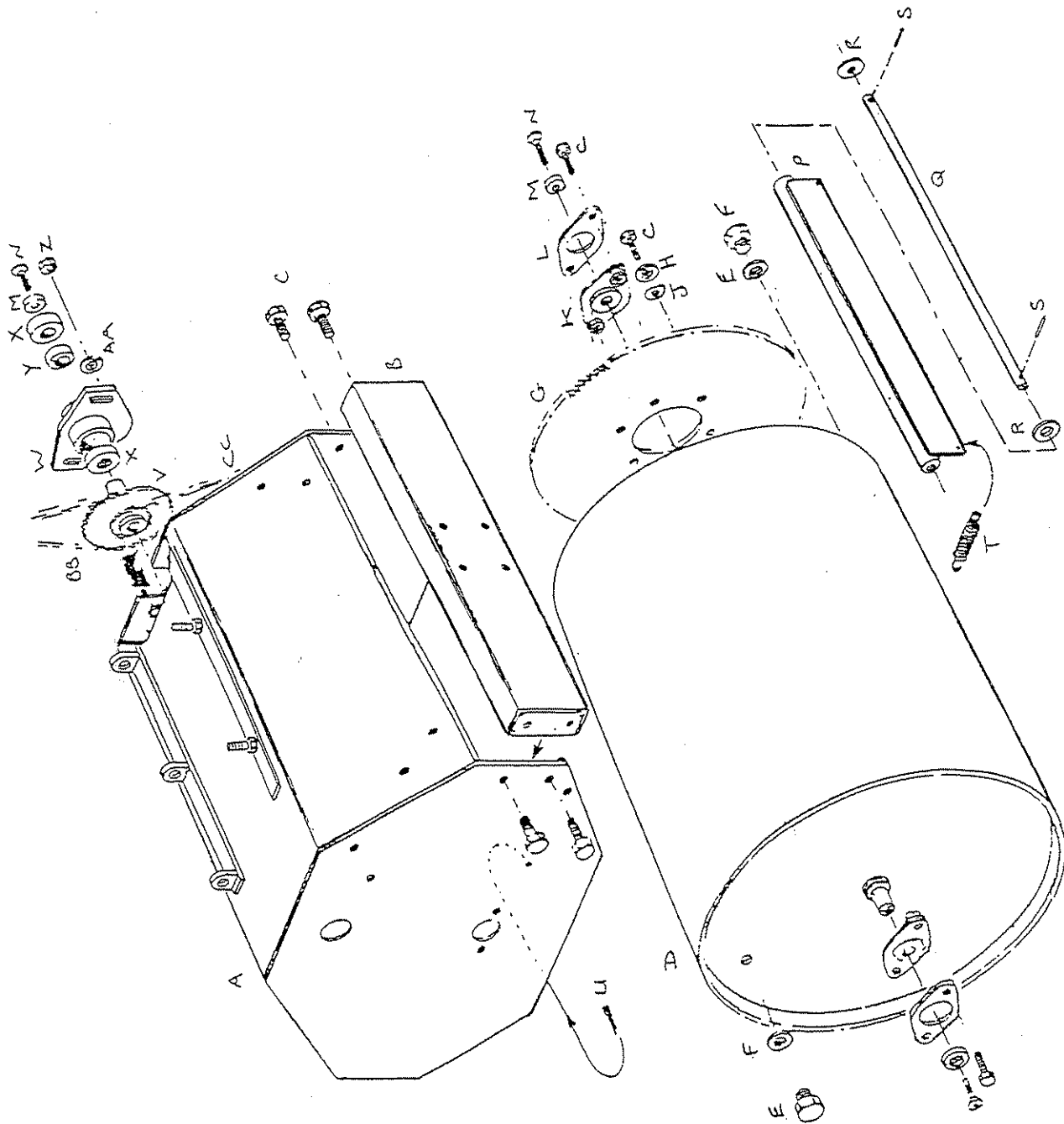
Tiverton

DEVON

EX16 6SS

TELEPHONE (01884) 253691

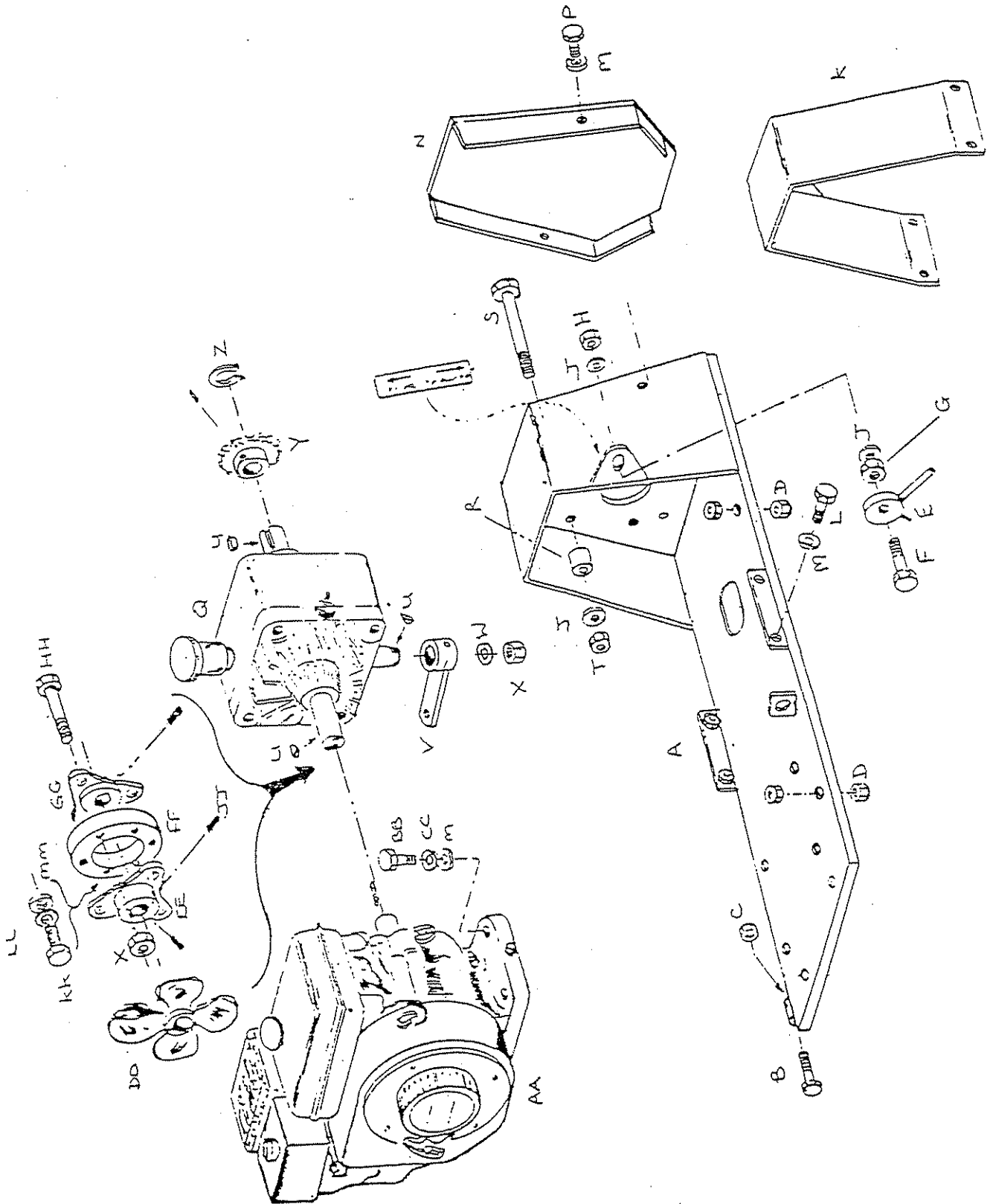
FAX (01884) 255189



MAIN FRAME AND ROLLER DRUM - (24" DIA)

<u>REF</u>	<u>PART NO</u>	<u>DESCRIPTION</u>	<u>QTY</u>
A	1440080	Main Frame for 24" Roller	1
B	1440021	Cross Member (for 1440080)	1
C	2987	Setscrew (for 1440021, 140041 and 1440046)	1
D	1440051	Roller Drum - 24" (for 1440080)	1
E	4000	Brass Plug (for 1440051)	2
F	0909	Seal (for 4000)	2
G	1440041	Sprocket - 114T (for 1440051)	1
H	3001	Spring Washer (for 2987)	6
J	3111	Flat Washer (for 2987)	6
K	1440046	Bearing (for 1440051)	2
L	1440029	Spacer Plate (for 1440046)	2
M	1440027	Clamp Washer	3
N	4132	Countersunk Socket Setscrew (for 1440027)	3
P	1440056	Scraper Blade (for 1440051)	1
Q	1440058B	Pivot Bar (for 1440056)	1
R	3219	Flat Washer (for 1440058B)	2
S	3991	Groverlock Pin (for 1440058B)	2
T	3200	Spring (for 1440056)	2
U	0868	Cotter Pin (for 3200)	2
V	144.105	Idler Sprocket	1
W	1440102	Bearing Housing (for 1440080)	1
X	2919	Bearing (for 1440102)	2
Y	1440108	Bearing Spacer (for 1440102)	1
Z	3082	Stiffnut (1440102 to 1440080)	2
AA	2716	Flat Washer (for 3082)	2
BB	1440089	Chain - 1/2" pitch 110046 x 50 pitches	1
CC	1440090	Chain - 1/2" pitch 110046 x 126 pitches	1
*	3993	Half Link (110046 No. 26)	As reqd
*	3994	Connecting Link (110046 No. 26)	As reqd

* Denotes parts not illustrated



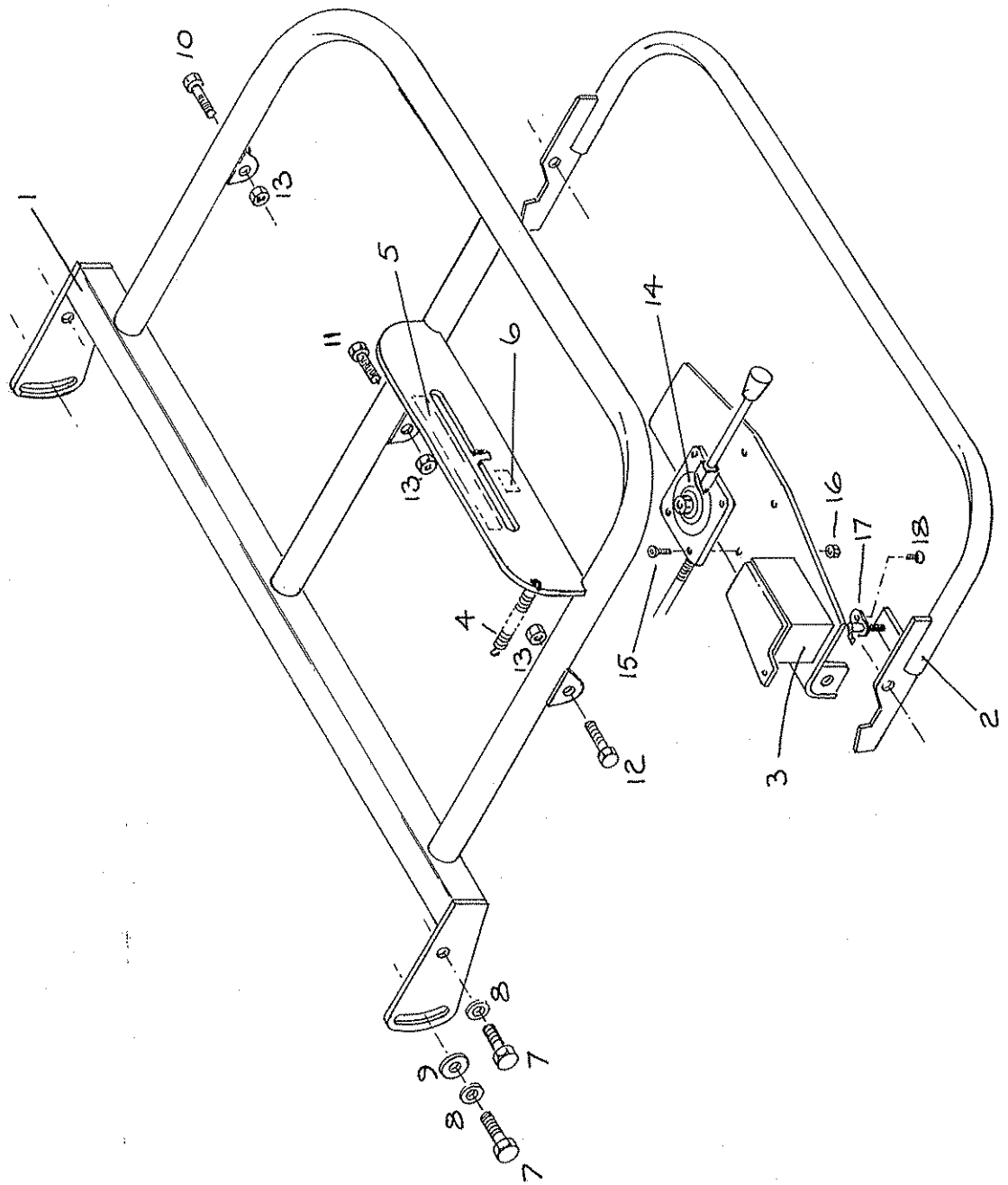
HYDROSTATIC TRANSMISSION

<u>REF</u>	<u>PART NO</u>	<u>DESCRIPTION</u>	<u>QTY</u>
A	1440099	Drive Mounting Bracket	1
B	5337	Caphead Socket Setscrew (1440099 to Main Frame)	3
C	4421	Stiffnut (for 5337)	3
D	2736	Locknut (1440099 to Main Frame)	4
E	1440060	Freewheel Actuator (for 1440099)	1
F	3643	Setscrew (1440060 to 1440099)	1
G	2732	Stiffnut (for 3643)	1
H	3054	Locknut (for 3643)	1
J	3219	Flat Washer (for 3643 and 3055)	6
K	1440114	Guard for Cooling Fan	1
L	3731	Setscrew (1440114 to 1440099)	4
M	3111	Flat Washer (for 3731, 2793 and 3110)	10
N	1440116	Chain Guard	1
P	2793	Bolt (1440116 to 1440099)	2
Q	5164	Hydrostatic Transmission Unit (for 1440099)	1
R	1440065	Spacer (for 1440099)	4
S	3055	Bolt (5164 to 1440099)	4
T	4421	Stiffnut (for 3055)	4
U	5185	Woodruffe Key (for 5164 and 1440077)	3
V	1440077	Speed Control Lever (for 5164)	1
W	2364	Flat Washer (for 1440077)	1
X	1375	Stiffnut (for 1440077 and 1276)	7
Y	144.087	Idler Sprocket	1
Z	5187	Circlip (1440087 to 5164)	1
AA	5163	SUZUKI Engine (V16OA2 5.3)	1
BB	3110	Setscrew (5163 to 1440099)	4
CC	3001	Spring Washer (for 3110)	4
DD	144.140	Cooling Fan	1
*	0460	Drive Screw (5184 to 1440117)	3
EE	1440117	Motor Drive Coupling (Engine end)	1
FF	1735	Rubber Coupling (for 1440117 and 1440119)	1

HYDROSTATIC TRANSMISSION CONTINUED

<u>REF</u>	<u>PART NO</u>	<u>DESCRIPTION</u>	<u>QTY</u>
GG	144.139	Motor Drive Coupling (Transmission end)	1
HH	1276	Bolt	6
JJ	2077	Socket Setscrew (for 1440117 and 1440119)	3
KK	2173	Setscrew	1
LL	1127	Spring Washer (for 2173)	1
MM	240045A	Special Washer (for 2173)	1
NN	3670	Parallel Key (for 5163)	1
PP	1440098	Transfer 'Neutral - Drive' (for 1440099) (See Fig. 9)	1

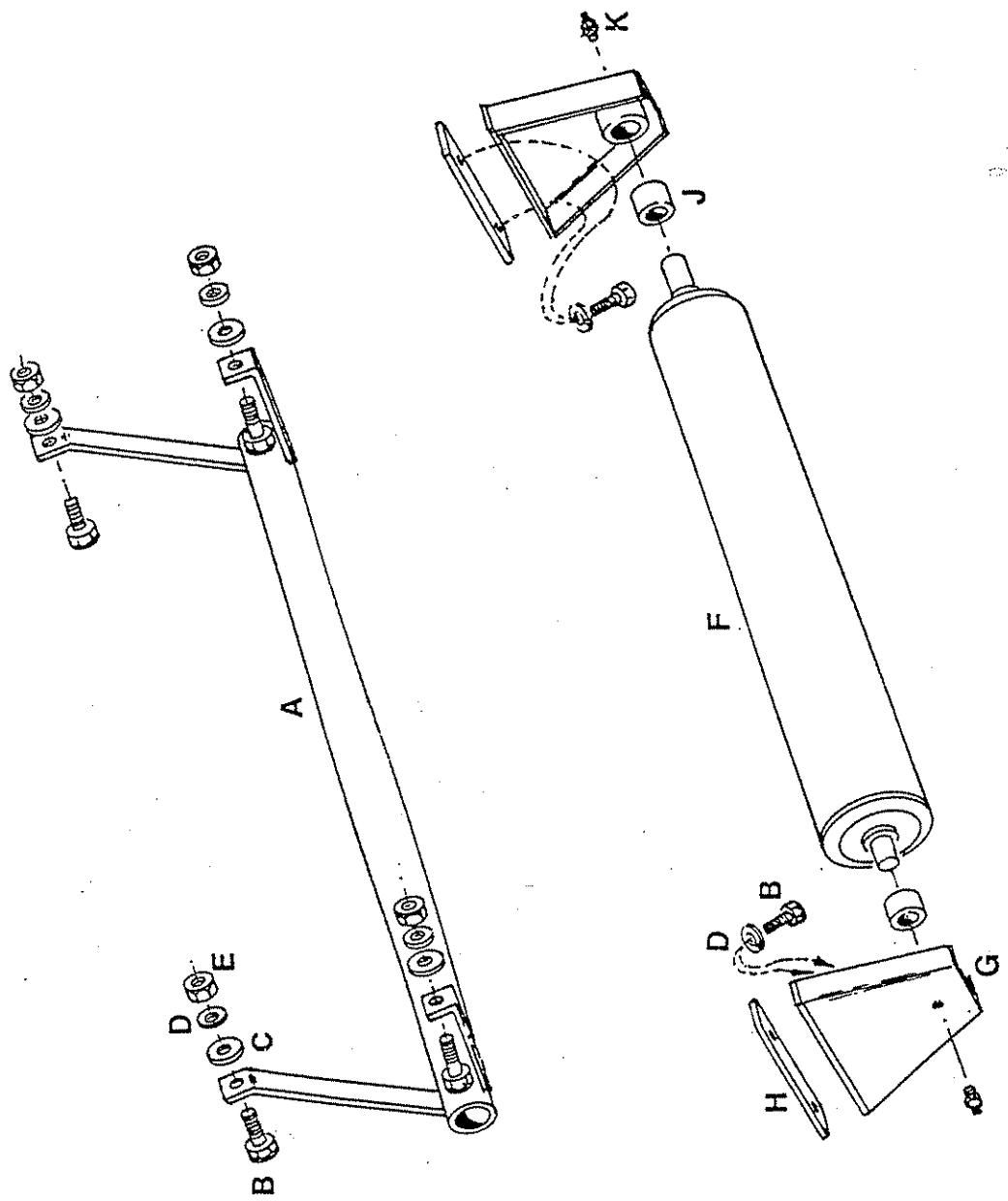
* Denotes parts not illustrated



HANDLEBAR ASSEMBLY

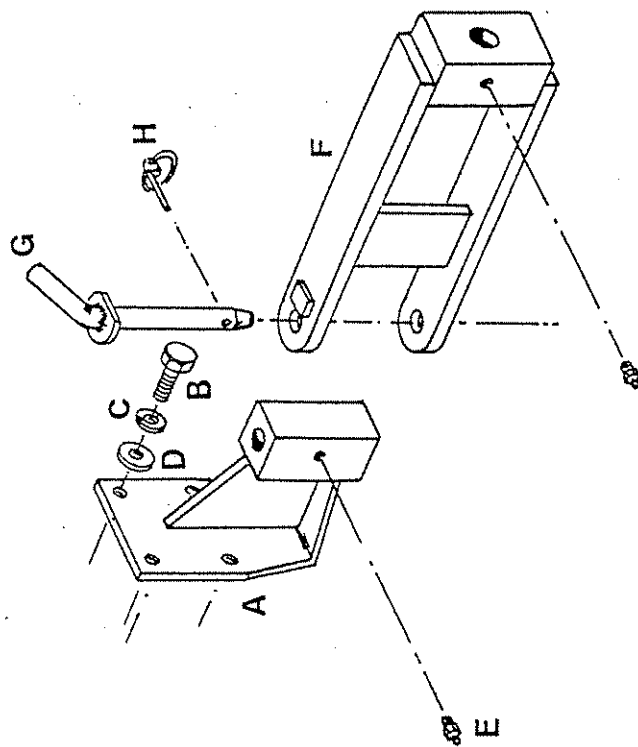
<u>REF</u>	<u>PART NO</u>	<u>DESCRIPTION</u>	<u>QTY</u>
1	144.145	Handlebar Assembly	1
2	144.146	Stop Bar Assembly	1
3	144.147	Bracket For Controller	1
4	3200	Spring (144.145 to 144.147)	1
5	1440148	Transfer (Drive)	1
6	1440149	Transfer (Neutral)	1
7	2710	Setscrew (Handlebar to Frame)	4
8	2728	Spring Washer	4
9	3219	Washer	2
10	3038	Bolt	1
11	2987	Setscrew	1
12	3183	Bolt	1
13	3182	Stiffnut	3
14	5186	Controller - B10 c/w cable 0.64m and clevis	1
15	1580	Socket Setscrew	4
16	1362	Fullnut	4
17	8147	Switch	1
18	7571	Bolt	1
*	2367	Grommet (to 144.147)	2
*	5194	Cable Clip Self-Adhesive	1
*	3977	Wire (Blue) x 1.0m	1
*	3980	Connector Bullet (Male) engine end of wire	1
*	7640	Connector Spade (F.Male) switch end of wire	1
*	7722	Plastic Ties (wire to 5186)	4

* Denotes parts not illustrated



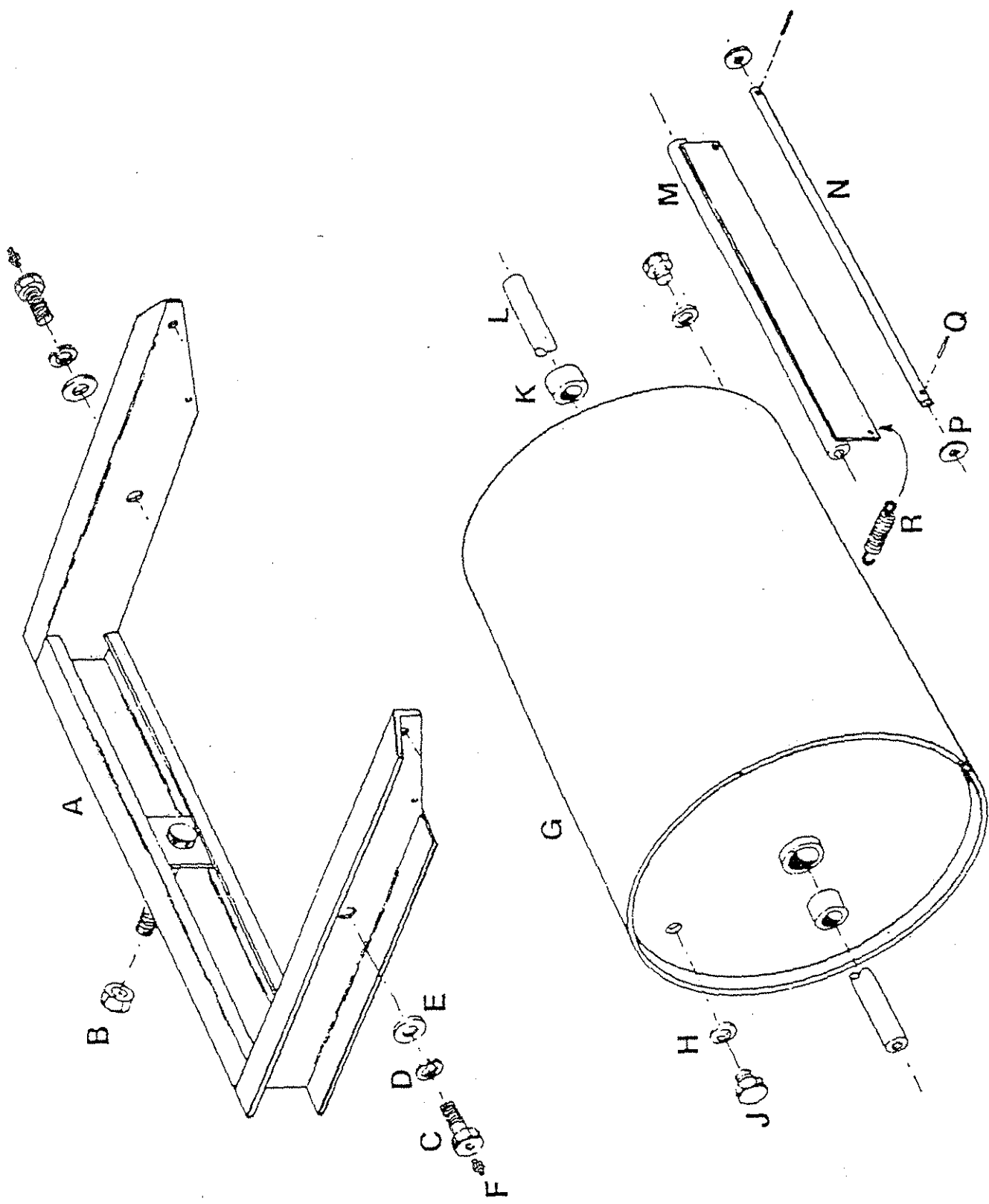
ANTI-KICK DEVICE AND REAR SKID ROLLER

<u>REF</u>	<u>PART NO</u>	<u>DESCRIPTION</u>	<u>QTY</u>
A	1440022	Anti-Kick Device	1
B	2987	Setscrew (1440022 to Pedestrian Roller Main Frame)	6
C	3111	Washer (for 2987)	4
D	3001	Spring Washer (for 2987)	6
E	2719	Stiffnut (for 2987)	4
F	144.124	Roller	1
G	144.125	Attachment Bracket (for 1440028)	2
H	1440030	Clamp Plate (for 1440025)	2
J	1984	Bush (for 1440025)	2
K	2923	Grease Nipple (for 1440025)	2



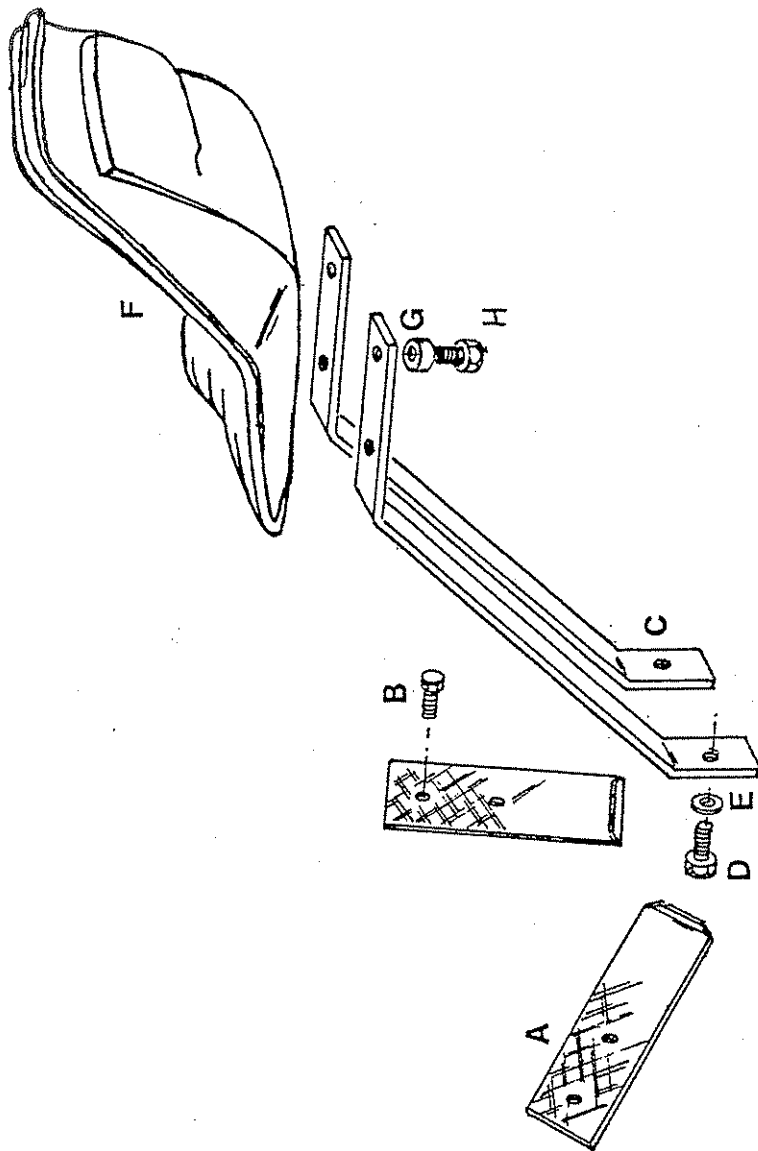
TOWING HITCH

<u>REF</u>	<u>PART NO</u>	<u>DESCRIPTION</u>	<u>QTY</u>
A	1440015	Towing Hitch - Front Section	1
B	2987	Setscrew (1440015 to Pedestrian Roller rear Cross Member)	4
C	3001	Spring Washer (for 3110)	4
D	3111	Washer (for 3110)	4
E	2923	Grease Nipple (for 1440015 and 1440016)	2
F	1440016	Towing Hitch - Rear Section	1
G	1440017	Attachment Pin (1440015 to 1440016)	1
H	0832	Linch Pin and Ring for (1440019)	1



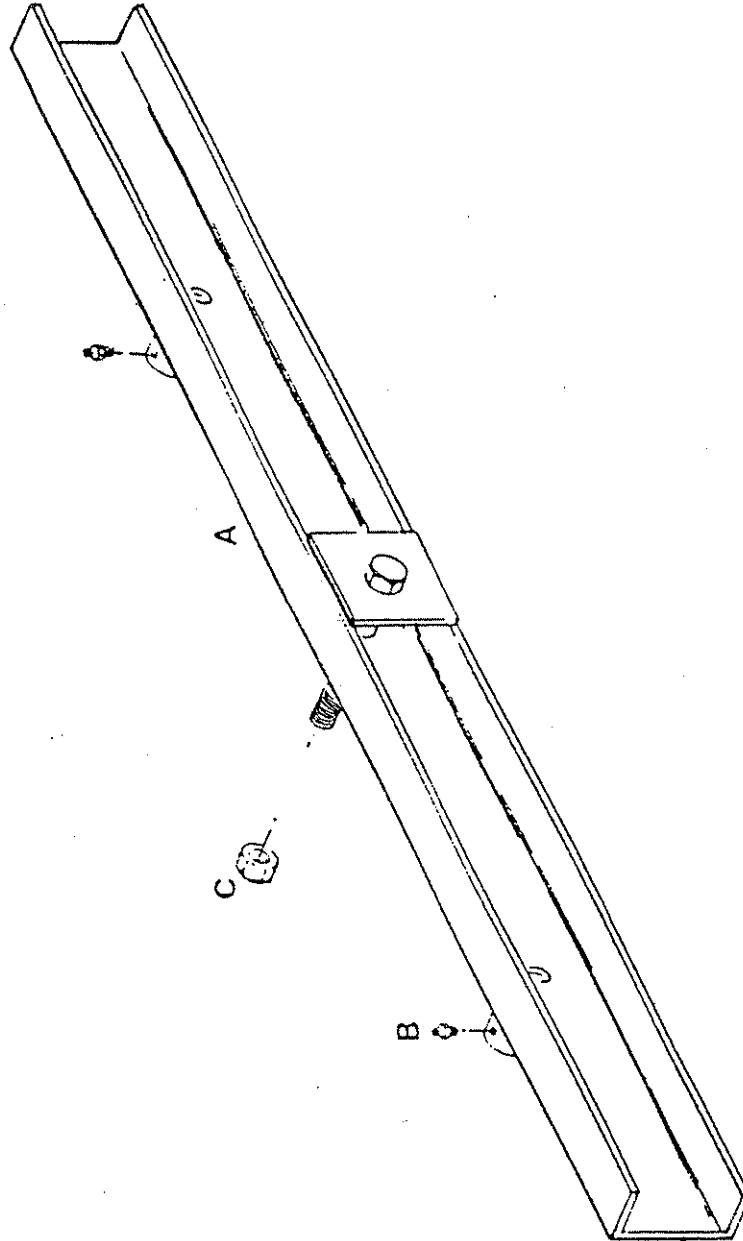
MAIN FRAME AND ROLLER DRUM - 18"

<u>REF</u>	<u>PART NO</u>	<u>DESCRIPTION</u>	<u>QTY</u>
A	1440036	Main Frame for 18" Roller Drum	1
B	2749	Stiffnut (1440036 to Connecting Channel - See Figure 8.)	1
C	1440031	Axle Locating Screw	2
D	2730	Spring Washer (for 1440031)	2
E	2867	Flat Washer (for 1440031)	2
F	0811	Grease Nipple (for 1440031)	2
G	1440050	Roller Drum - 18" Diameter	1
H	0909	Seal (for 0920)	2
J	4000	Drain/Filler Plug (for 1440050)	2
K	2427	Bush (for 1440050)	2
L	1440042	Axle Shaft (for 1440050)	1
M	1440057	Scraper Bar	1
N	1440058A	Pivot Bar (for 1440057)	1
P	3219	Flat Washer (for 1440058A)	2
Q	3991	Groverlock Pin (for 1440058A)	2
R	3200	Spring	2



SEAT ASSEMBLY AND FOOTREST

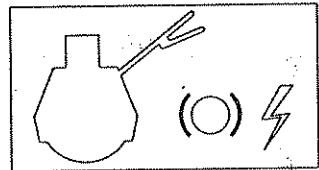
<u>REF</u>	<u>PART NO</u>	<u>DESCRIPTION</u>	<u>QTY</u>
A	1440040	Footrest	2
B	4052	Setscrew (1440040 to Main Frame)	4
C	1440038	Seat Support Arm	2
D	3059	Setscrew (1440038 to Cross Member - See Figure 8.)	2
E	2728	Spring Washer (for 3059)	2
F	310618	Seal (for 1440038)	1
G	1440059	Spacer (for 310618)	4
H	3183	Bolt (310618 to 1440038)	4



ROLLER CONNECTING CHANNEL

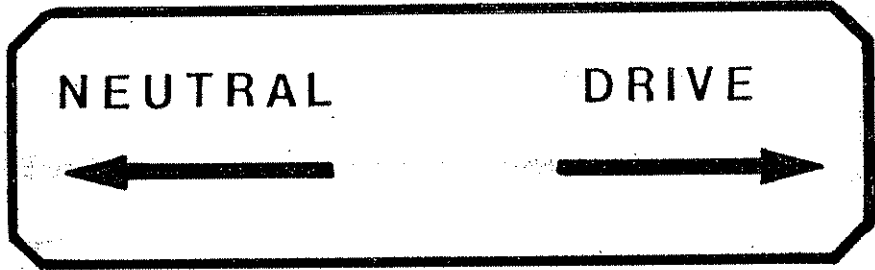
<u>REF</u>	<u>PART NO</u>	<u>DESCRIPTION</u>	<u>QTY</u>
A	1440018	Connecting Channel	1
B	2923	Grease Nipple (for 1440018)	2
C	2749	Stiffnut (1440018 to Towing Hitch rear section See Figure 7.)	1

1



2

3



ADHESIVE TRANSFERS

<u>REF</u>	<u>PART NO</u>	<u>DESCRIPTION</u>	<u>QTY</u>
1	1440148	Transfer - 'DRIVE'	1
2	1440149	Transfer - 'NEUTRAL'	1
3	1440098	Transfer - 'NEUTRAL-DRIVE'	1