

Twose Series

Levelling Tine Kits for
Front Mounted Furrow Press
Operation & Parts Manual

Publication 5289

IMPORTANT

VERIFICATION OF WARRANTY REGISTRATION



DEALER WARRANTY INFORMATION & REGISTRATION VERIFICATION

It is imperative that the selling dealer registers this machine with McConnel Limited before delivery to the end user – failure to do so may affect the validity of the machine warranty.

To register machines go to the McConnel Limited web site at www.mccommel.com, log onto 'Dealer Inside' and select the 'Machine Registration button' which can be found in the Service Section of the site. Confirm to the customer that the machine has been registered in the section below.

Should you experience any problems registering a machine in this manner please contact the McConnel Service Department on 01584 875848.

Registration Verification

Dealer Name:
Dealer Address:
Customer Name:
Date of Warranty Registration:/...../..... Dealer Signature:

NOTE TO CUSTOMER / OWNER

Please ensure that the above section above has been completed and signed by the selling dealer to verify that your machine has been registered with McConnel Limited.

IMPORTANT: During the initial 'bedding in' period of a new machine it is the customer's responsibility to regularly inspect all nuts, bolts and hose connections for tightness and re-tighten if required. New hydraulic connections occasionally weep small amounts of oil as the seals and joints settle in – where this occurs it can be cured by re-tightening the connection – *refer to torque settings chart below*. The tasks stated above should be performed on an hourly basis during the first day of work and at least daily thereafter as part of the machines general maintenance procedure.

CAUTION: DO NOT OVER TORQUE HYDRAULIC FITTINGS AND HOSES

TORQUE SETTINGS FOR HYDRAULIC FITTINGS

HYDRAULIC HOSE ENDS		
BSP	Setting	Metric
1/4"	18 Nm	19 mm
3/8"	31 Nm	22 mm
1/2"	49 Nm	27 mm
5/8"	60 Nm	30 mm
3/4"	80 Nm	32 mm
1"	125 Nm	41 mm
1.1/4"	190 Nm	50 mm
1.1/2"	250 Nm	55 mm
2"	420 Nm	70 mm

PORT ADAPTORS WITH BONDED SEALS		
BSP	Setting	Metric
1/4"	34 Nm	19 mm
3/8"	47 Nm	22 mm
1/2"	102 Nm	27 mm
5/8"	122 Nm	30 mm
3/4"	149 Nm	32 mm
1"	203 Nm	41 mm
1.1/4"	305 Nm	50 mm
1.1/2"	305 Nm	55 mm
2"	400 Nm	70 mm

WARRANTY POLICY

WARRANTY REGISTRATION

All machines must be registered, by the selling dealer with McConnel Ltd, before delivery to the end user. On receipt of the goods it is the buyer's responsibility to check that the Verification of Warranty Registration in the Operator's Manual has been completed by the selling dealer.

1. LIMITED WARRANTIES

- 1.01. *All mounted machines supplied by McConnel Ltd are warranted to be free from defects in material and workmanship from the date of sale to the original purchaser for a period of 12 months, unless a different period is specified.
All Self Propelled Machines supplied by McConnel Ltd are warranted to be free from defects in material and workmanship from the date of sale to the original purchaser for a period of 12 months or 1500 hours. Engine warranty will be specific to the Manufacturer of that unit.*
- 1.02. *All spare parts supplied by McConnel Ltd and purchased by the end user are warranted to be free from defects in material and workmanship from the date of sale to the original purchaser for a period of 6 months. All parts warranty claims must be supported by a copy of the failed part invoice to the end user. We cannot consider claims for which sales invoices are not available.*
- 1.03. *The warranty offered by McConnel Ltd is limited to the making good by repair or replacement for the purchaser any part or parts found, upon examination at its factory, to be defective under normal use and service due to defects in material or workmanship. Returned parts must be complete and unexamined. Pack the component(s) carefully so that any transit damage is avoided. All ports on hydraulic items should be drained of oil and securely plugged to prevent seepage and foreign body ingress. Certain other components, electrical items for example, may require particular care when packing to avoid damage in transit.*
- 1.04. *This warranty does not extend to any product from which McConnel Ltd's serial number plate has been removed or altered.*
- 1.05. *The warranty policy is valid for machines registered in line with the terms and conditions detailed and on the basis that the machines do not extend a period of 24 months or greater since their original purchase date, that is the original invoice date from McConnel Limited.
Machines that are held in stock for more than 24 months cannot be registered for warranty.*
- 1.06. *This warranty does not apply to any part of the goods, which has been subjected to improper or abnormal use, negligence, alteration, modification, fitment of non-genuine parts, accident damage, or damage resulting from contact with overhead power lines, damage caused by foreign objects (e.g. stones, iron, material other than vegetation), failure due to lack of maintenance, use of incorrect oil or lubricants, contamination of the oil, or which has served its normal life. This warranty does not apply to any expendable items such as blades, belts, clutch linings, filter elements, flails, flap kits, skids, soil engaging parts, shields, guards, wear pads, pneumatic tyres or tracks.*
- 1.07. *Temporary repairs and consequential loss - i.e. oil, downtime and associated parts are specifically excluded from the warranty.*
- 1.08. *Warranty on hoses is limited to 12 months and does not include hoses which have suffered external damage. Only complete hoses may be returned under warranty, any which have been cut or repaired will be rejected.*
- 1.09. *Machines must be repaired immediately a problem arises. Continued use of the machine after a problem has occurred can result in further component failures, for which McConnel Ltd cannot be held liable, and may have safety implications.*
- 1.10. *If in exceptional circumstances a non McConnel Ltd part is used to effect a repair, warranty reimbursement will be at no more than McConnel Ltd's standard dealer cost for the genuine part.*

- 1.11. *Except as provided herein, no employee, agent, dealer or other person is authorised to give any warranties of any nature on behalf of McConnell Ltd.*
- 1.12. *For machine warranty periods in excess of 12 months the following additional exclusions shall apply:*
 - 1.12.1. *Hoses, exposed pipes and hydraulic tank breathers.*
 - 1.12.2. *Filters.*
 - 1.12.3. *Rubber mountings.*
 - 1.12.4. *External electric wiring.*
 - 1.12.5. *Bearings and seals*
 - 1.12.6. *External Cables, Linkages*
 - 1.12.7. *Loose/Corroded Connections, Light Units, LED's*
 - 1.12.8. *Comfort items such as Operator Seat, Ventilation, Audio Equipment*
- 1.13. *All service work, particularly filter changes, must be carried out in accordance with the manufacturer's service schedule. Failure to comply will invalidate the warranty. In the event of a claim, proof of the service work being carried out may be required.*
- 1.14. *Repeat or additional repairs resulting from incorrect diagnosis or poor quality previous repair work are excluded from warranty.*

NB Warranty cover will be invalid if any non-genuine parts have been fitted or used. Use of non-genuine parts may seriously affect the machine's performance and safety. McConnell Ltd cannot be held responsible for any failures or safety implications that arise due to the use of non-genuine parts.

2. REMEDIES AND PROCEDURES

- 2.01. *The warranty is not effective unless the Selling Dealer registers the machine, via the McConnell web site and confirms the registration to the purchaser by completing the confirmation form in the operator's manual.*
- 2.02. *Any fault must be reported to an authorised McConnell Ltd dealer as soon as it occurs. Continued use of a machine, after a fault has occurred, can result in further component failure for which McConnell Ltd cannot be held liable.*
- 2.03. *Repairs should be undertaken within two days of the failure. Claims submitted for repairs undertaken more than 2 weeks after a failure has occurred, or 2 days after the parts were supplied will be rejected, unless the delay has been authorised by McConnell Ltd. Please note that failure by the customer to release the machine for repair will not be accepted as a reason for delay in repair or submitting warranty claims.*
- 2.04. *All claims must be submitted, by an authorised McConnell Ltd Service Dealer, within 30 days of the date of repair.*
- 2.05. *Following examination of the claim and parts, McConnell Ltd will pay, at their discretion, for any valid claim the invoiced cost of any parts supplied by McConnell Ltd and appropriate labour and mileage allowances if applicable.*
- 2.06. *The submission of a claim is not a guarantee of payment.*
- 2.07. *Any decision reached by McConnell Ltd. is final.*

3. LIMITATION OF LIABILITY

- 3.01. *McConnell Ltd disclaims any express (except as set forth herein) and implied warranties with respect to the goods including, but not limited to, merchantability and fitness for a particular purpose.*
- 3.02. *McConnell Ltd makes no warranty as to the design, capability, capacity or suitability for use of the goods.*
- 3.03. *Except as provided herein, McConnell Ltd shall have no liability or responsibility to the purchaser or any other person or entity with respect to any liability, loss, or damage caused or alleged to be caused directly or indirectly by the goods including, but not limited to, any indirect, special, consequential, or incidental damages resulting from the use or operation of the goods or any breach of this warranty. Notwithstanding the above limitations and warranties, the manufacturer's liability hereunder for damages incurred by the purchaser or others shall not exceed the price of the goods.*
- 3.04. *No action arising out of any claimed breach of this warranty or transactions under this warranty may be brought more than one (1) year after the cause of the action has occurred.*

4. MISCELLANEOUS

- 4.01. McConnel Ltd may waive compliance with any of the terms of this limited warranty, but no waiver of any terms shall be deemed to be a waiver of any other term.*
- 4.02. If any provision of this limited warranty shall violate any applicable law and is held to be unenforceable, then the invalidity of such provision shall not invalidate any other provisions herein.*
- 4.03. Applicable law may provide rights and benefits to the purchaser in addition to those provided herein.*

McConnel Limited



DECLARATION OF CONFORMITY

Conforming to EU Machinery Directive 2006/42/EC

We,

McCONNEL LIMITED, Temeside Works, Ludlow, Shropshire SY8 1JL, UK

Hereby declare that:

The Product; *Tine Kit for Tractor Mounted Front Presses*

Product Code; *TFMP*

Serial No. & Date Type

Manufactured in; *United Kingdom*

Complies with the required provisions of the Machinery Directive 2006/42/EC
The machinery directive is supported by the following harmonized standards;

- BS EN ISO 12100 (2010) Safety of machinery – General principles for design – Risk assessment and risk reduction.
- BS EN 349 (1993) + A1 (2008) Safety of machinery - Minimum distances to avoid the entrapment with human body parts.
- BS EN ISO 14120 (2015) Safety of machinery - Guards general requirements for the design and construction of fixed and movable guards.
- BS EN 4413 (2010) Hydraulic fluid power. Safety requirements for systems and their components.

McCONNEL LIMITED operates an ISO 9001:2008 quality management system, certificate number: FM25970.

This system is continually assessed by the;

British Standards Institution (BSI), Beech House, Milton Keynes, MK14 6ES, UK

BSI is accredited by UK Accreditation Service, accreditation number: UKAS 003.

The EC declaration only applies if the machine stated above is used in accordance with the operating instructions.

Signed  *Responsible Person*

CHRISTIAN DAVIES on behalf of McCONNEL LIMITED

Status: *General Manager*

Date: *January 2018*

This manual describes the Twose Levelling Tine kits suitable for mounting to Twose Front Mounted Furrow Presses. It should be read in conjunction with the Front Press Manual and also the Tractor Manual.

Section	Page No	
1	Certificate of Conformity	2
2	General Information	3
3	Safety	4
4	Installation	9
5	Storage	10
	Replacement Parts Section	

IMPORTANT

This machine is designed for agricultural use
and must not be used for any other purpose

It is potentially hazardous to fit or use
Any parts other than genuine **Twose** parts

The company disclaims all liability for the
consequences of such use, which in addition
voids the machine warranty

We reserve right to modify the technical data and characteristics of the machines at any time without prior notice.

All dimensions and capacities mentioned in this book are approximate. In pursuance of the Companies policy of constant development, the right is reserved to depart, without notice, from any detail illustrated or specified in this book, without incurring the obligation to provide such modifications on machines previously delivered.

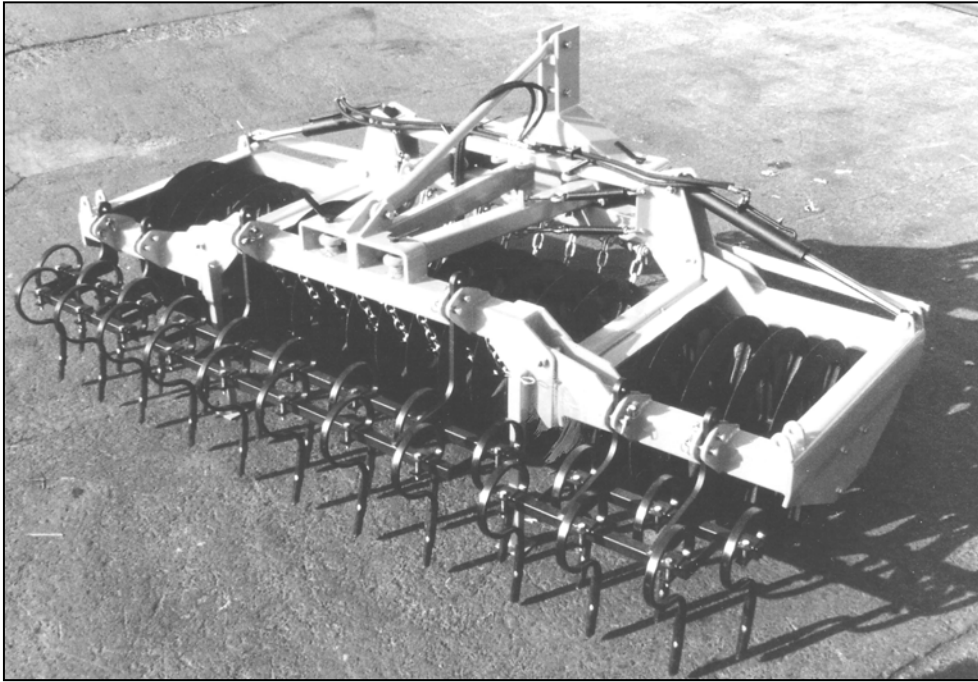
No responsibility will be accepted by Twose of Tiverton Limited for any injury, damage or loss arising from the improper use or lack of maintenance of any machinery supplied by them or from any failure of the user to comply with all instructions published by Tractor or Loader manufacturers, particularly with regard to maximum load capacities, tyre pressures and stability, or with instructions and regulations pertaining to Tractor Cabs.

General

Before fitting or operating the machine users should read and fully understand the instructions and information given in this manual and also the furrow press manual and tractor operators manual.

Levelling tine kits are available in three widths; 1.5, 3.0 and 4.0 metres, the 1.5 metre being suitable for fixed frame furrow presses and the 3.0 and 4.0 metre models are suitable for folding wing presses. Each spring tine is fitted with a replaceable tip

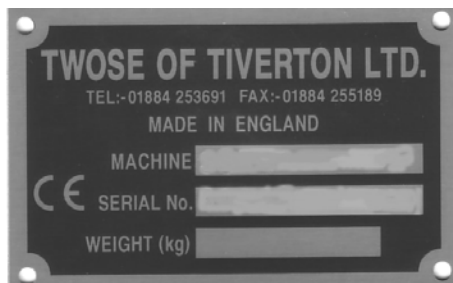
The spacing of the tines on the frames may be adjusted to suit customer requirements or prevailing conditions.



Tine Kit fitted to a front mounted furrow press

Identifying the machine

Each machine is fitted with an identification plate. Both the data necessary to identify the model and the serial number to order spare parts or after-sales service are stamped on the plate.



Replacement Parts

It is strongly recommended to use genuine spare parts to avoid altering the technical features of the machine. Twose of Tiverton are not responsible for any damage or injuries to people due to unauthorised modifications or the use of non-genuine spare parts

SAFETY NOTES AND WARNINGS

Throughout the handbook the following sub headings are used to draw attention to various points of importance.



DANGER
WARNING

This is to draw attention to very important instructions which MUST be followed precisely to avoid injury or death.

CAUTION

This is used to draw attention to instructions which MUST be followed to avoid damage to operator, machine, process or the environment.

NOTE:-

This is used to highlight points used for supplementary information.

HEALTH AND SAFETY



DANGER
WARNING

Never attempt to assemble, couple up, or operate machinery until you understand fully the functions, controls and safety precautions required, as shown in the operators manual.



DANGER
WARNING

Always follow tractor safety operations and instructions VERY carefully.

NEVER TAKE RISKS



DANGER
WARNING

NEVER LEAVE TRACTOR SEAT WHILST ENGINE - OR MACHINE IS RUNNING

CAUTION

Be aware of warning stickers and instruction stickers on machine as care must be taken and instructions obeyed.

CAUTION

Contact your dealer should you need advice, assistance, or if you do not understand the manual or machine. “NEVER ASSUME” - if not sure - ASK.

CAUTION

Machine **MUST NOT** be altered or modified in any way - without permission - No liability will be accepted in respect of a machine that has been modified without manufacturers permission.



DANGER
WARNING

Never drive machinery at speeds that could cause danger to other persons or properties, or in a manner that may cause accidents.



DANGER
WARNING

Never attempt to Service/adjust or work on any machinery in an unsupported state.

Always ensure that machinery is safely supported and propped in position.



DANGER
WARNING

Always ensure that the wheels of any wheeled implement/machinery are ‘chocked’ firmly and implement will not move, before attempting to ‘service’ or ‘work on’ in any way or form.

CAUTION

Always **‘SWITCH OFF’** tractor engine before attempting to carry out adjustment or service repairs and inspections, on machinery.



DANGER
WARNING

Always be aware of your surroundings - and operate machinery accordingly. Beware of confined - tight areas, low height restrictions, buildings and overhangs etc. Also drive and operate bearing in mind weather conditions such as sun, rain, ice, snow, wind etc. [Make allowances in all situations].

CAUTION

Never operate machine in a reckless or uncaring manner. Respect other road users and be patient.

HIGHWAY USE

When transporting machinery on the Highways the “Local Highways Department” should be consulted for approval and notification, as rules and regulations vary from local authority area to area.

Allow time for walkers and cyclists to clear site. Also when using on the Highway consult the ‘Lighting Regulations’ for correct procedures.

CAUTION

Never carry “passengers” on machinery or on tractor
Ensure bystanders/onlookers are kept well away from operational area of apparatus.



DANGER
WARNING

ON ROAD - TRANSPORT SPEED

When transporting the machinery on the highway:- for example moving from “worksite to worksite” or travelling from home to work or work to home, it is VERY IMPORTANT that transport speed be kept to a low sensible figure (12-15MPH).

The “all-up” (inclusive) weight of a tractor and furrow press and rear combination seed drill is always going to be high, but - the loadings on ALL mountings and implements involved (especially the tractor) are greatly amplified if the unit is driven to travel fast over bumps, potholes, any uneven surfaces or around sharp corners and can result in serious fractures/failures of any or indeed all of the operating machinery involved.



DANGER
WARNING

UNSUPPORTED MACHINES

Always ensure the machine is fully supported before getting underneath the machine. Use suitable blocks or packing. Never get underneath the machine for any reason especially if unit is still operating.

CAUTION

‘PARKING UP’ MACHINE

When machine is being removed and being ‘parked up’ it is essential that a good firm base and level site be found. Always chock and prop machine to ensure a good firm position to leave parked. Ensure that stand legs of machine are correctly locked into position.

CAUTION

Never allow children to play on, or around, parked machinery.

CAUTION

Never wear loose fitting or ragged clothing which could get caught in machinery or controls.

CAUTION

Ensure visibility is clear through cab-screens at all times.

CAUTION

Always dispose of discarded or worn out parts thoughtfully - by disposing of them in an approved and specified legal scrap site, bin or skip.

CAUTION

Worn out and spent waste oil, grease and other obnoxious substances must always be disposed of in suitable and legally approved dumping containers suitable for the waste in question.

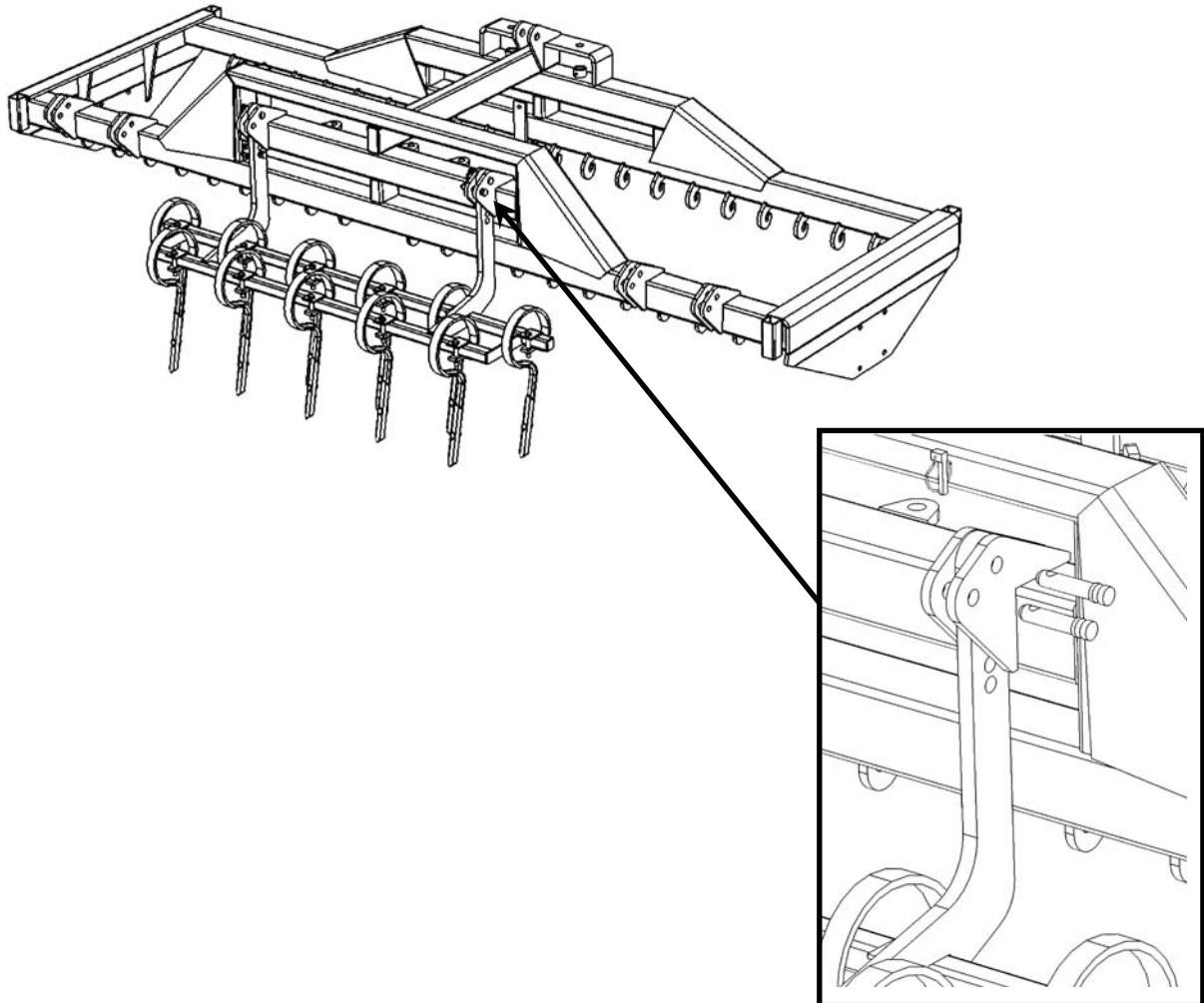
GENERAL INSTRUCTIONS

1. Before attaching any machine to a tractor or loader make sure that implement is still standing firmly on good solid - level site as it will be, providing unit was previously parked correctly.
- Check that any wheels are 'chocked' correctly and that supports/props are in position where necessary to prevent booms etc. dropping.
2. Before and during the manoeuvring of the tractor or vehicle in order to attach machinery/implements, - make sure that No other persons are in the vicinity.
Keep other persons well clear and make known your intentions, all the while keeping a sharp lookout whilst reversing and aligning machines for coupling up.
3. Always secure tractor into selected position by ensuring that brakes are applied correctly in order to prevent vehicle moving off on its own to cause injury and damage.
4. Make sure that the lift arms and top link ball ends of the tractor are properly fitted to the machine/implement by using correct adapter sleeves where necessary, and that retaining pins of the correct type are used on all three point linkage points. Secure pins with relevant pin and ring assembly.
5. If the machine is of the drawbar type - check that the hitch on the tractor is in good condition and that the hitch pin used is of the correct size and type, and is properly secured when fitted.
6. Should it become necessary to make any adjustments or service on machine while raised on the tractor linkage, or raised on a front end loader - trestles or suitable supports MUST be positioned to support machine to prevent accidental dropping of lift arms, loader arms or mechanical failure [MACHINE MUST ALWAYS BE PROPPED AND CHOCKED].
7. Never attempt to work on, adjust or service repair machinery of any kind whilst it is still running or working. Always stop the machine and STOP THE TRACTOR ENGINE - before any service/repairs begin.
(SWITCH OFF TRACTOR ENGINE BEFORE LEAVING TRACTOR SEAT)
8. In transit always use transport stays or locking devices where provided.

If, as in the case of some longer machines, the unit is transported lengthways - make sure that the front of the tractor is suitably ballasted to maintain stability.
9. Always use machines in a sensible and reasonable manner and do not attempt to use them in work for which they are not intended. Avoid overloading and abusing them as this can cause damage to machine and tractor and can be very dangerous.
10. When unhitching/detaching a machine from a tractor three point linkage or from a front end loader ensure that any stands or legs are securely positioned and that the machine is parked where it will not be a safety hazard or cause annoyance to others.
- . Make sure that chosen 'parking site' is a firm and level site.

11. Carry out regular periodic maintenance. - Always with safety in mind.
12. Ensure regular maintenance procedures are maintained for the lifetime of the machine.
13. HEALTH AND SAFETY RULES AND REGULATIONS MUST BE ADHERED TO.

The tine frame is attached to support plates on the front press by pins that are secured by lynch pins. The support arms of the tine frames have a series of holes permitting height adjustment of the frame. A second pin inserted through the lower hole on the front press support plate prevents the frame from swinging forward.



IMPORTANT:- Ensure machine is parked on a firm and level site without any bystanders or onlookers nearby..

Before storing the machine it should be thoroughly cleaned and a check made for broken or damaged parts so that replacements can be ordered. Coat all bright metal parts with grease to prevent corrosion. Choose a level hard standing to store the machine preferably under cover. Ensure the machine is safely supported.

On folding wing models when the machine is not in use ensure the wings are in the lowered position to prevent injury by walking into the tines.

Replacement Parts Section

For best performance...

USE ONLY GENUINE TWOSE SERVICE PARTS

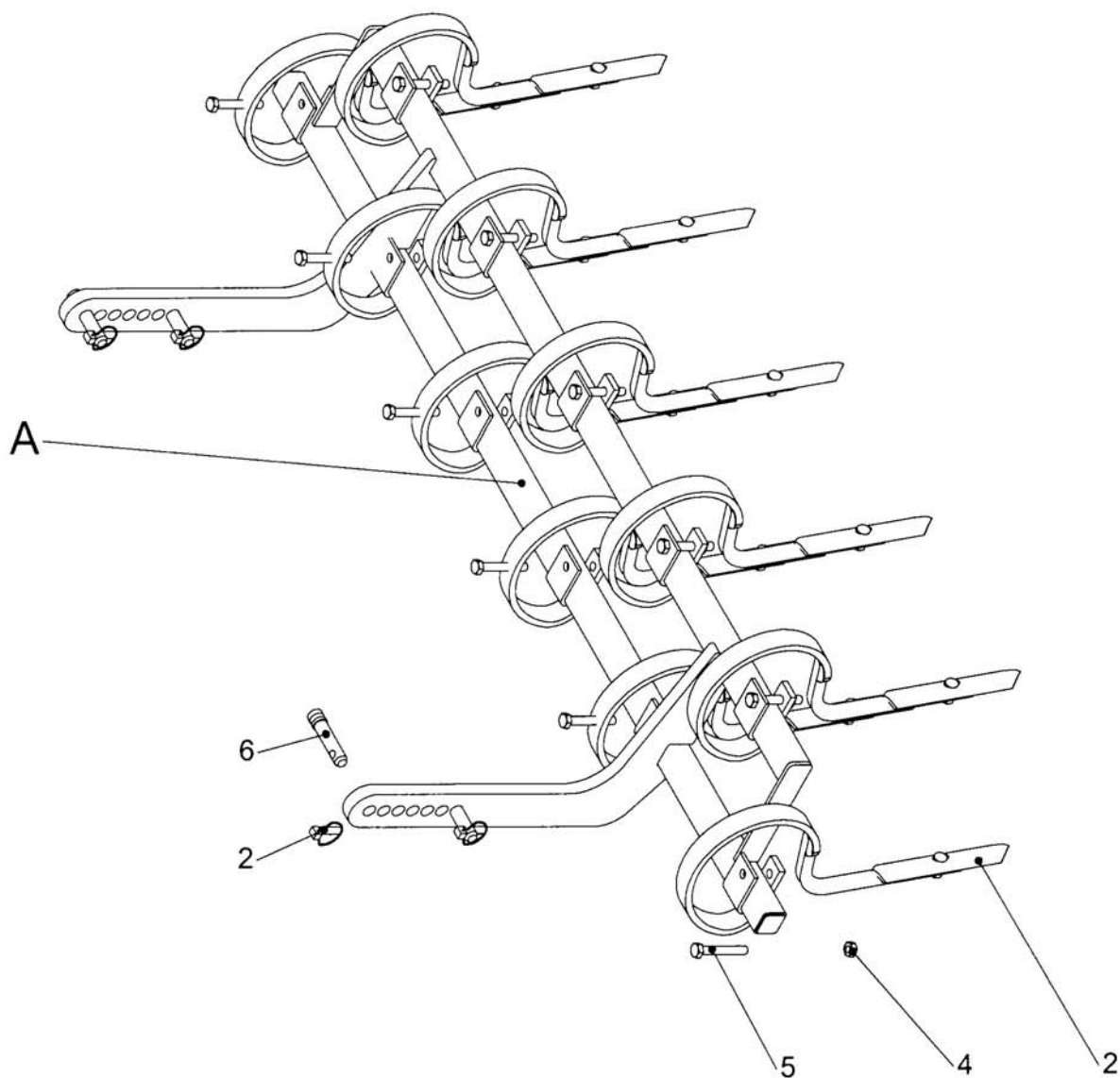
To be assured of the latest design improvements purchase your 'Genuine Replacements' from the Original Equipment Manufacturer through your local Dealer or Stockist.

Always quote:

- ***Machine Type***
- ***Serial Number***
- ***Part Number***

Design Improvements may have altered some of the parts listed in this manual – The latest part will always be supplied when it is interchangeable with an earlier one.

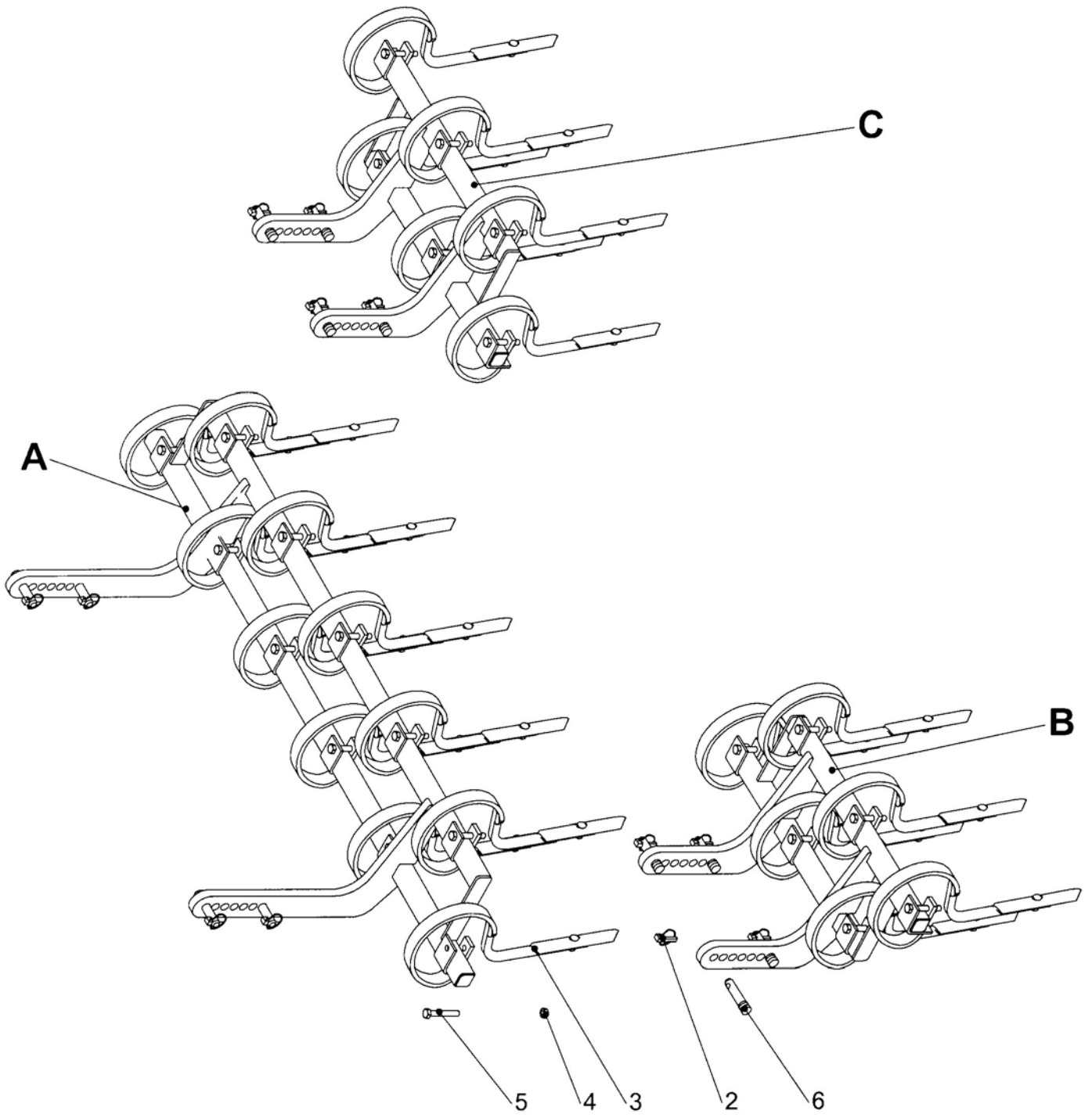
FPT15M



FPT15M**A - 189.200 1.5M CENTRE FRAME ASSY**

01	189.028	1.5M TINE CTR FRAME SECTION	1
02	00.372.01	LINCH PIN	4
03	T8109	TINE FT SFT STRAIGHT SHANK	11
04	05.287.03	SELF-LOCKING NUT M12 PLATED	11
05	05.292.21	BOLT M12 X 80MM PLATED	11
06	T7528	PIN LINKAGE 3/4IN (BARE)	4

FPT30M



FPT30M**A - 189.200 1.5M CTR FRAME ASSY**

01	189.028	1.5M TINE CTR FRAME SECTION	1
02	00.372.01	LINCH PIN	4
03	T8109	TINE FT SFT STRAIGHT SHANK	11
04	05.287.03	SELF-LOCKING NUT M12 PLATED	11
05	05.292.21	BOLT M12 X 80MM PLATED	11
06	T7528	PIN LINKAGE 3/4IN (BARE)	4

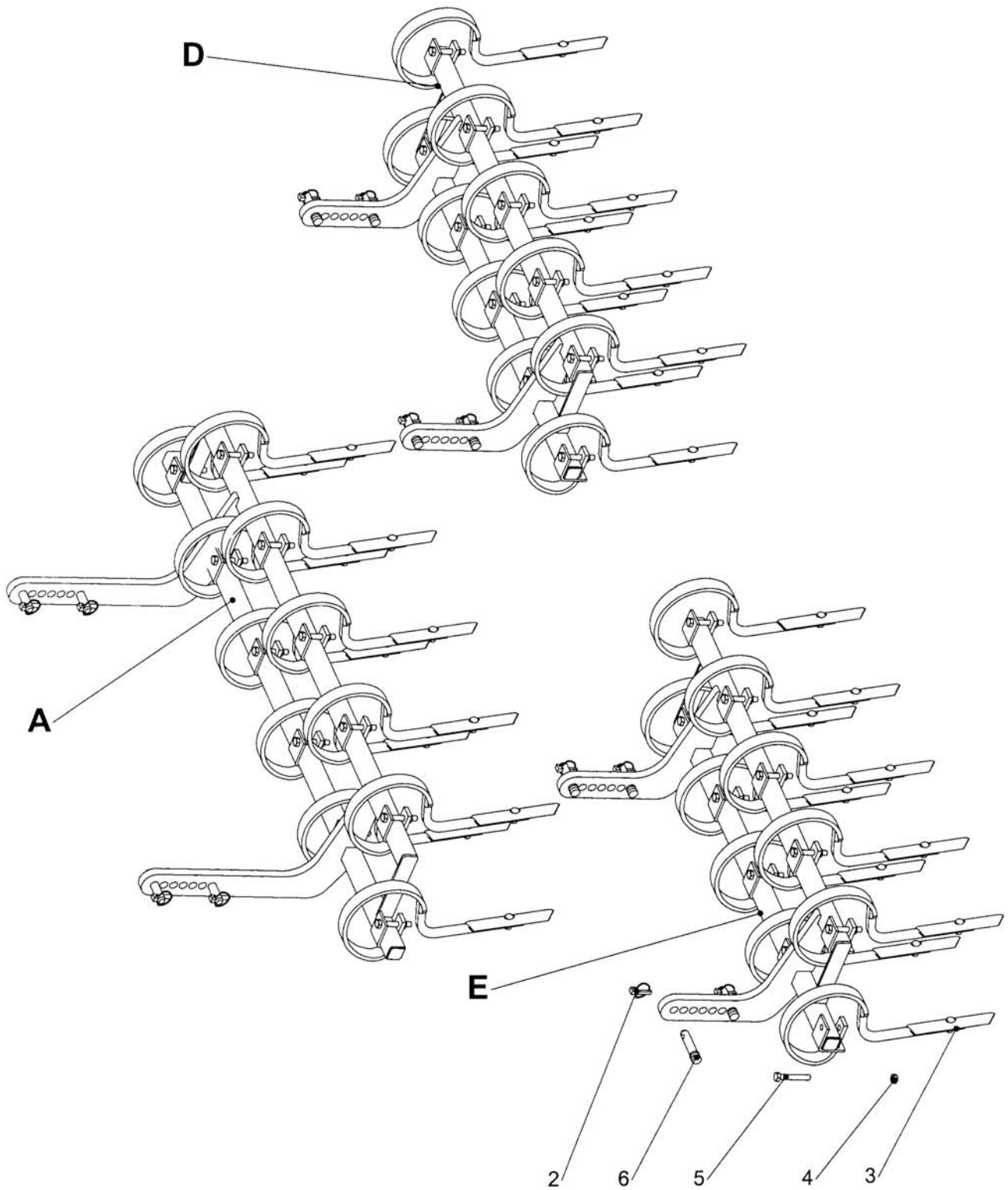
B - 189.201 LH 3M WING ASSY

10	189.029AL	LH 3M WING FRAME SECTION	1
02	00.372.01	LINCH PIN	4
03	T8109	TINE FT SFT STRAIGHT SHANK	6
04	05.287.03	SELF-LOCKING NUT M12 PLATED	6
05	05.292.21	BOLT M12 X 80MM PLATED	6
07	T7528	PIN LINKAGE 3/4IN (BARE)	4

C - 189.202 RH 3M WING ASSY

20	189.029AR	RH 3M WING FRAME SECTION	1
02	00.372.01	LINCH PIN	4
03	T8109	TINE FT SFT STRAIGHT SHANK	6
04	05.287.03	SELF-LOCKING NUT M12 PLATED*	6
05	05.292.21	BOLT M12 X 80MM PLATED	6
07	T7528	PIN LINKAGE 3/4IN (BARE)	4

FPT40M



FPT40M**A - 189.200 1.5M CTR FRAME ASSY**

01	189.028	1.5M TINE CTR FRAME SECTION	1
02	00.372.01	LINCH PIN	4
03	T8109	TINE FT SFT STRAIGHT SHANK	11
04	05.287.03	SELF-LOCKING NUT M12 PLATED	11
05	05.292.21	BOLT M12 X 80MM PLATED	11
06	T7528	PIN LINKAGE 3/4IN (BARE)	4

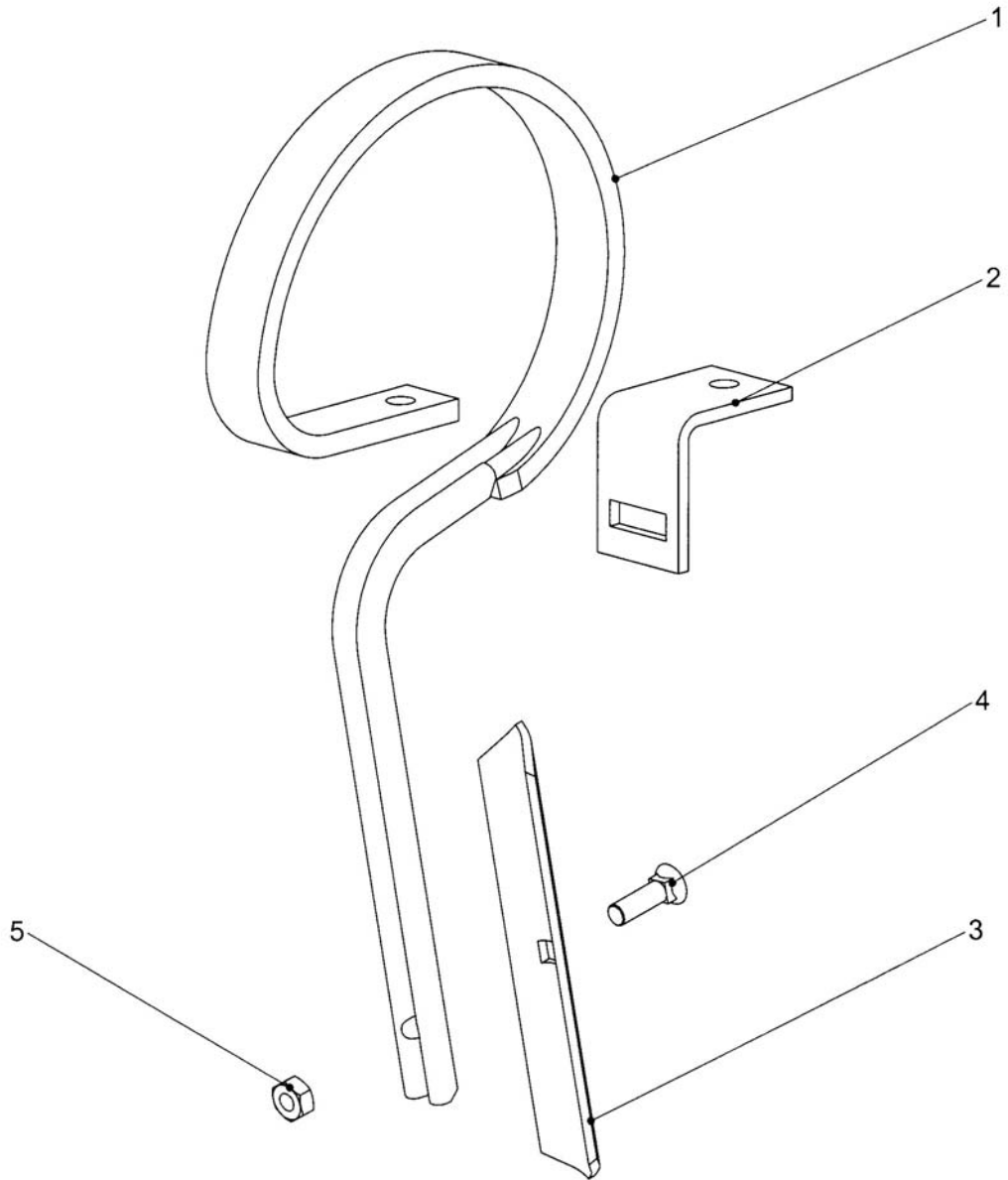
D - 189.203 LH 4M WING ASSY

01	189.029BL	LH 4M WING FRAME SECTION	1
02	00.372.01	LINCH PIN	4
03	T8109	TINE FT SFT STRAIGHT SHANK	10
04	05.287.03	SELF-LOCKING NUT M12 PLATED	10
05	05.292.21	BOLT M12 X 80MM PLATED	10
06	T7528	PIN LINKAGE 3/4IN (BARE)	4

E - 189.204 RH 4M WING ASSY

01	189.029BR	RH 4M WING FRAME SECTION	1
02	00.372.01	LINCH PIN	4
03	T8109	TINE FT SFT STRAIGHT SHANK	10
04	05.287.03	SELF-LOCKING NUT M12 PLATED	10
05	05.292.21	BOLT M12 X 80MM PLATED	10
06	T7528	PIN LINKAGE 3/4IN (BARE)	4

T8109



T8109**TINE ASSEMBLY**

01	T8109-1	TINE, STRAIGHT	1
02	T8109-2	TINE CLAMP	1
03	T8109-3	TINE POINT STRAIGHT	1
04	T8109-4	BOLT M10 SQ. SHOLDER	1
05	T8109-5	NUT M10	1



McConnel Limited, Temeside Works, Ludlow, Shropshire SY8 1JL. England.
Telephone: 01584 873131. Facsimile: 01584 876463. www.mcconnel.com