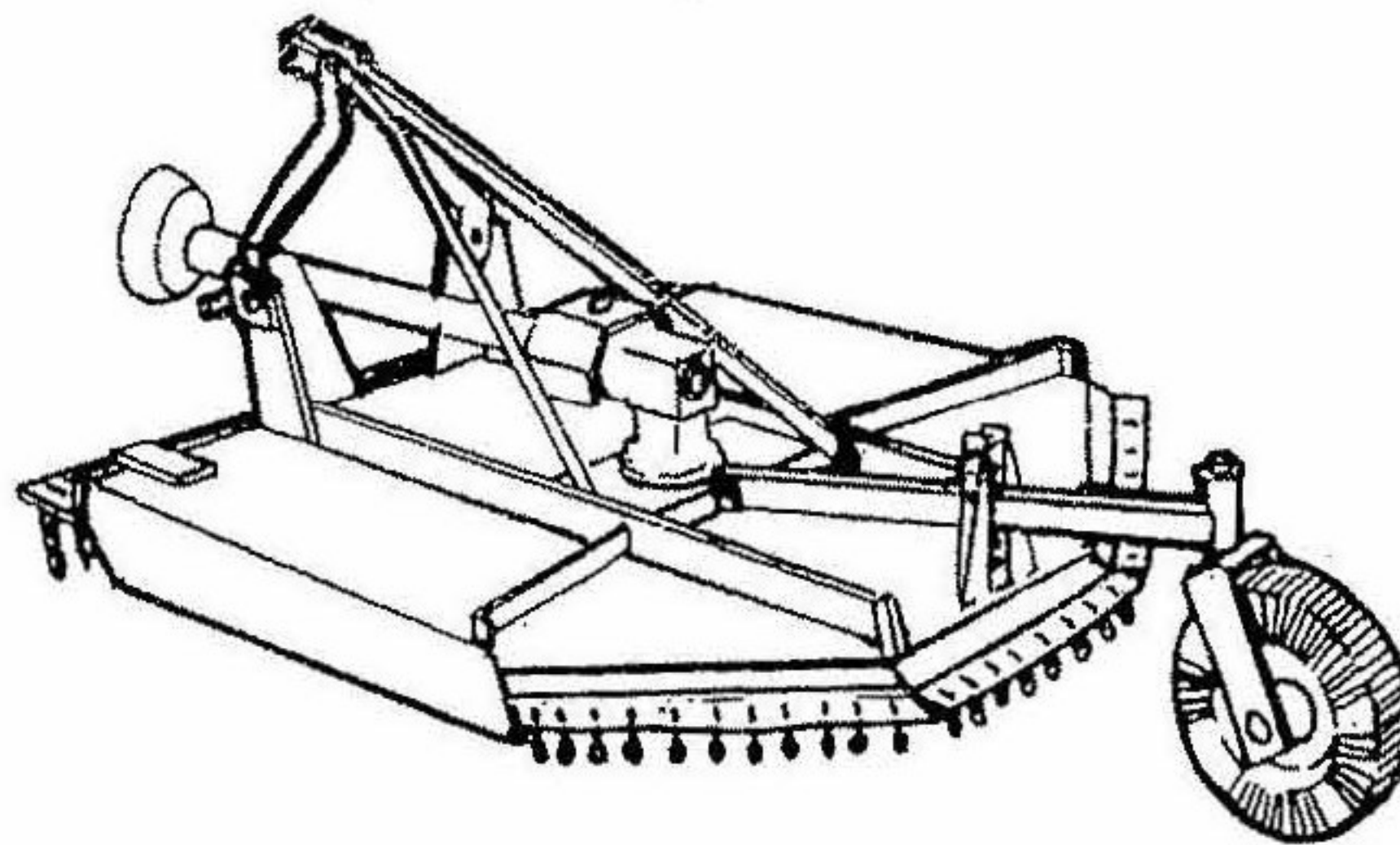


CTE4, CTE5, CTE6 & CTE7



ROTARY TOPPER - Publication No. 8200-01 issue 1

**THIS MANUAL IS TO BE HANDED TO THE CUSTOMER BEFORE
THE MACHINE IS TO BE USED FOR THE FIRST TIME.**

**THIS MANUAL (OR A COPY OF) MUST BE USED AND READ BY
ALL OPERATORS OF THIS MACHINE.**

TWOSE OF TIVERTON LIMITED

6 CHINON COURT
LOWER MOOR WAY
TIVERTON BUSINESS PARK
TIVERTON
DEVON
EX16 6SS

Telephone: 01884 253691

Fax: 01884 255189

All dimensions and capacities mentioned in this book are approximate. In pursuance of the company's policy of constant development, the right is reserved to depart, without notice, from any detail illustrated or specified in this book, without incurring the obligation to provide such modifications on the machine previously delivered.

No responsibility will be accepted by Twose of Tiverton Limited for any injury, damage or loss arising from the improper use of or lack of maintenance of any machinery supplied by them or from any failure of the user to comply with all instructions published by Tractor or Loader Manufacturers, particularly with the regard to maximum load capacities, tyre pressures and stability, or with instructions and regulations pertaining to Tractor Cabs.

1. INDEX

THIS MANUAL DESCRIBES THE CTE RANGE OF ROTARY TOPPERS AND IS APPLICABLE TO MACHINES BUILT FROM SERIAL NUMBER:-

Section	Page No.
1. INDEX	1
2. TECHNICAL DATA	2
3. DECLARATION OF CONFORMITY	3
4. SAFETY PRECAUTIONS	4-1 TO 4-2
5. INSTALLATION PROCEDURE	5-1 TO 5-2
6. GUARDS	6-1
7. GENERAL OPERATION	7-1 TO 7-2
8. MAINTENANCE AND STORAGE	8-1 TO 8-2
9. PARTS INFORMATION	9-1
CTE4 ROTARY TOPPER	10-1 TO 10-2
CTE4 GEARBOX	11-1
CTE5 ROTARY TOPPER	12-1 TO 12-2
CTE6 ROTARY TOPPER	13-1 TO 13-2
CTE5 & 6 GEARBOX	14-1 TO 14-2
CTE5 & 6 PTO & SLIPCLUTCH	15-1
CTE7 ROTARY TOPPER	16-1 TO 16-2
CTE7 GEARBOX	17-1
CTE7 PTO & SLIPCLUTCH	18-1
DECALS	19-1

NOTE:

*THE TERMS LEFT HAND AND RIGHT HAND USED IN THE TEXT
APPLY TO THE MACHINE WHEN VIEWED FROM THE REAR.
IF IN ANY DOUBT CONSULT TWOSE OF TIVERTON LIMITED*

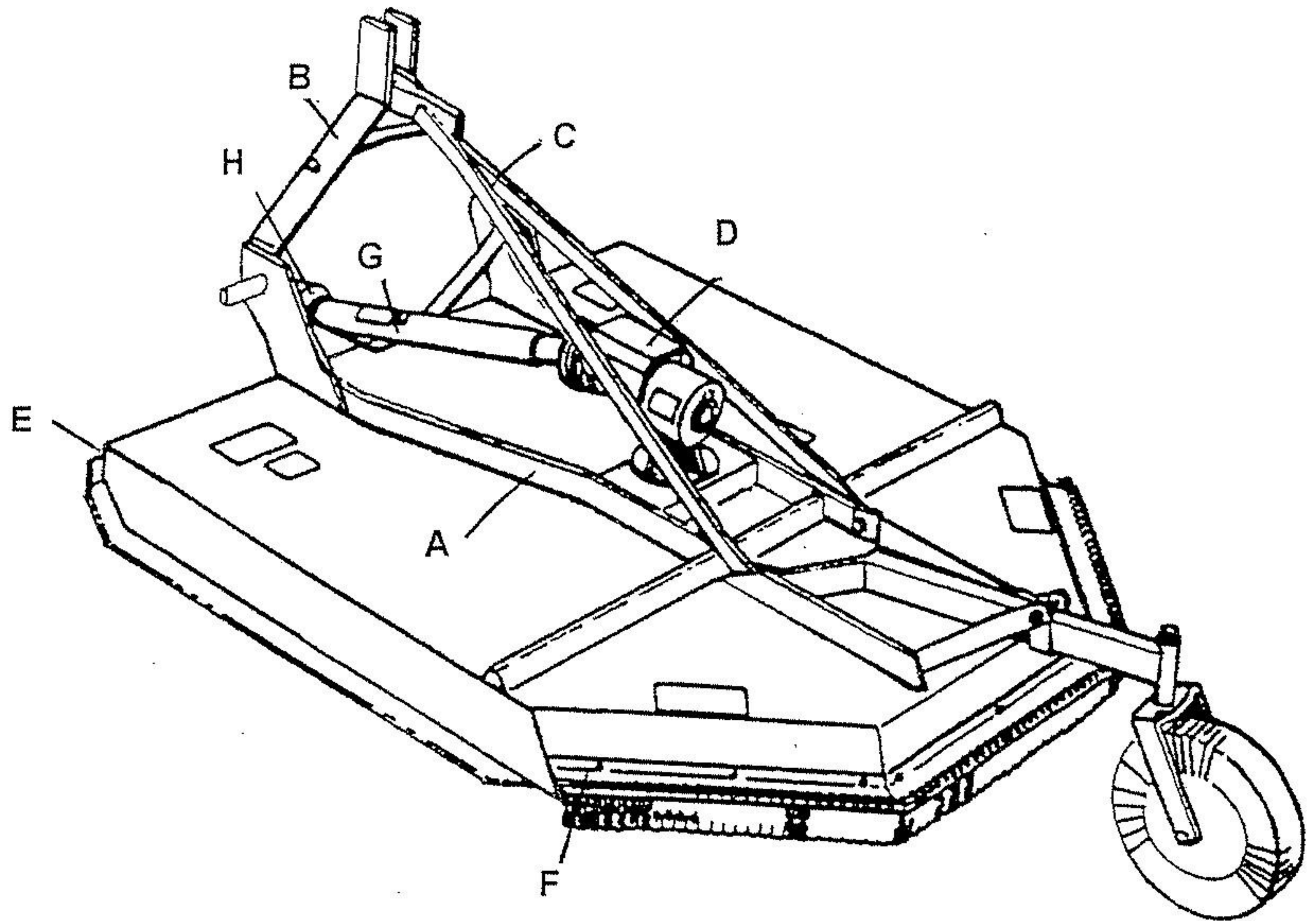
IMPORTANT

THIS MACHINE IS FOR VEGETATION CONTROL AND
MUST NOT BE USED FOR ANY OTHER PURPOSE

IT IS POTENTIALLY HAZARDOUS TO FIT OR USE ANY
PARTS OTHER THAN **GENUINE TWOSE PARTS**

THE COMPANY DISCLAIMS ALL LIABILITY FOR THE
CONSEQUENCES OF SUCH USE WHICH, IN ADDITION,
VOIDS THE MACHINE WARRANTY

2. TECHNICAL DATA



A) MAINFRAME	E) FRONT GUARD
B) 'A' FRAME	F) REAR GUARD
C) 'A' FRAME STAYS	G) PTO SHAFT
D) GEARBOX	H) PTO COVER

TRACTOR DETAILS

BHP	- 30 BHP (minimum)
PTO type	- Live
PTO speed	- 540 rev/min
PTO size	- 1.3/8", 6 spline

NOISE

The equivalent daily personal noise exposure from the machine measured at the operator's ear is within the range 80 - 85dB, when used in conditions where the load fluctuates between zero and maximum.

This applies when the machine is attached to a tractor fitted with a quiet cab and used in accordance with the operations in a generally open environment.

At equivalent daily noise exposure levels of between 85 and 90dB suitable ear protectors are recommended.

EC DECLARATION OF CONFORMITY
conforming to EEC Directive 98/37/EC

We,

of TWOSE OF TIVERTON LIMITED, 6 Chinon Court, Lower Moor Way, Tiverton Business Park, Tiverton, Devon, EX16 6SS.

declare that under our sole responsibility that the product (type)

This machine is one of a group suitable for mowing/topping pasture/vegetation

Serial No. & Date:

Manufactured by the above Company/*

.....
(*insert business name and full address if not stated above)

complies with the required provisions of the Directive 98/37/EC and conforms with European Norm. BS EN 292

Part 1: 1991 Safety of Machinery - Terminology, Methodology
Part 2: 1991 Safety of Machinery - Technical Specifications

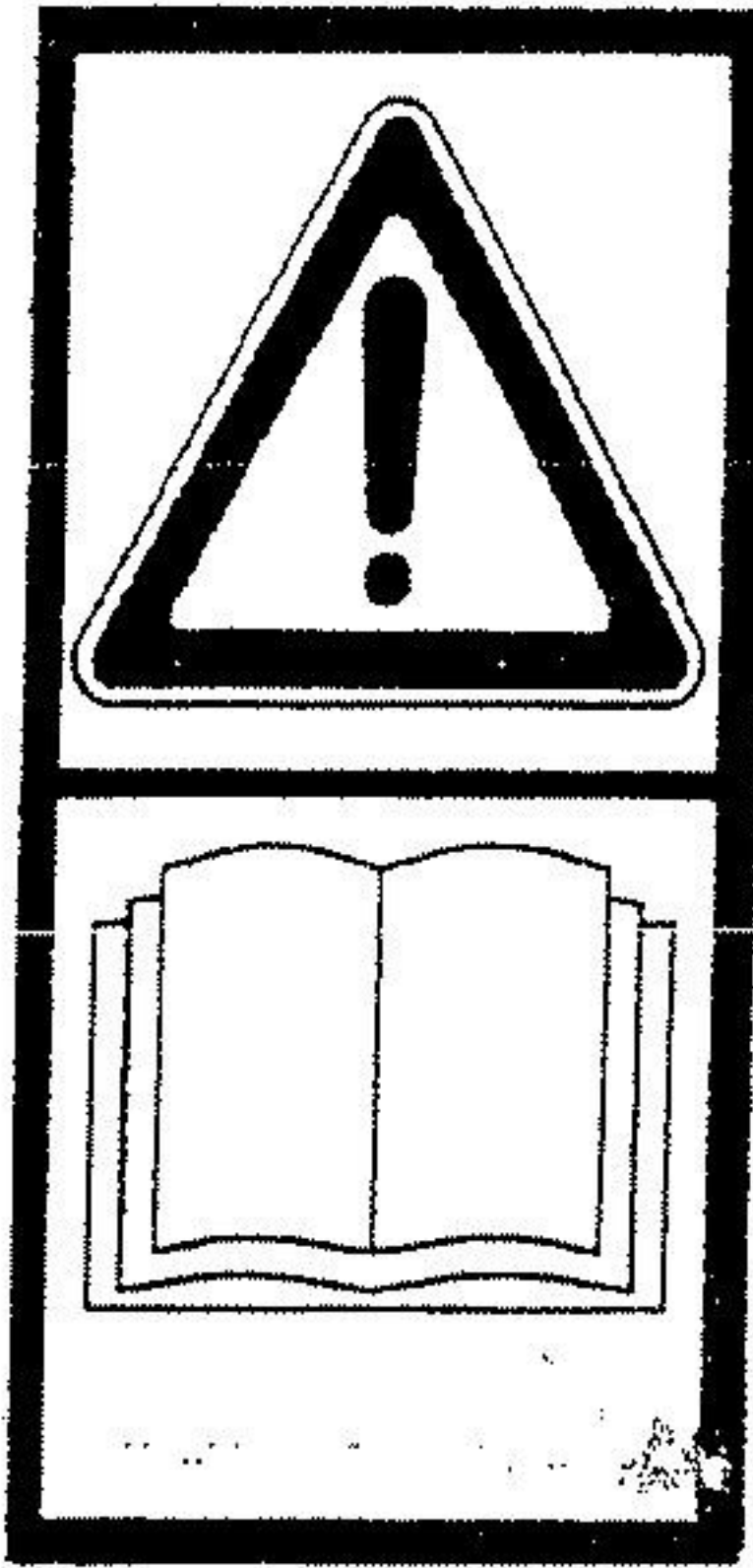
and other national standards associated with its design and construction as listed in the Technical File.

Signed Adrian Longstaff
on behalf of TWOSE OF TIVERTON LIMITED Responsible Person

Status DIRECTOR OF ENGINEERING

Date 13 February 2001

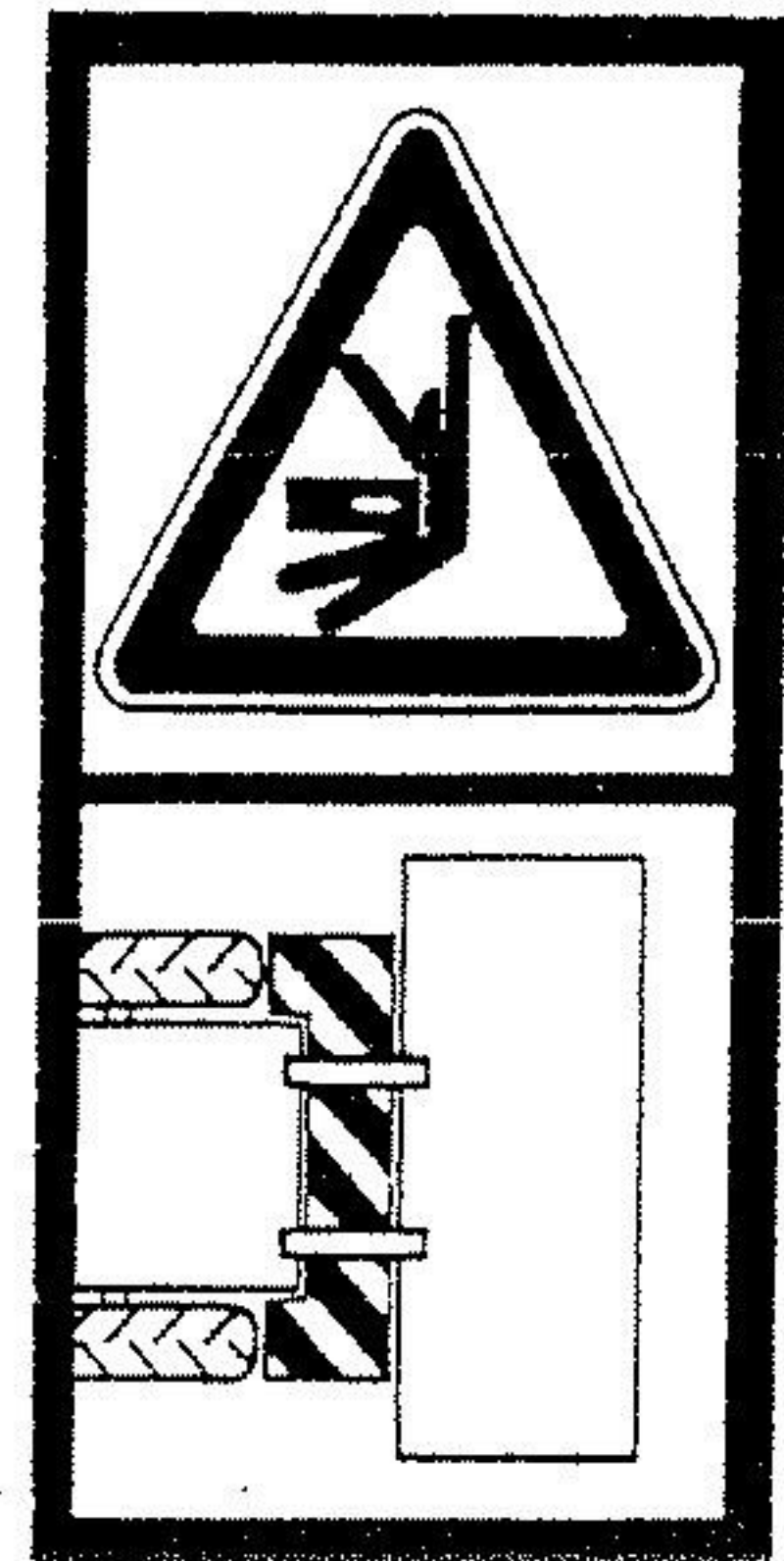
4. SAFETY PRECAUTIONS



READ THE INSTRUCTION
MANUAL BEFORE STARTING
WORK



KEEP ALL NUTS TIGHT



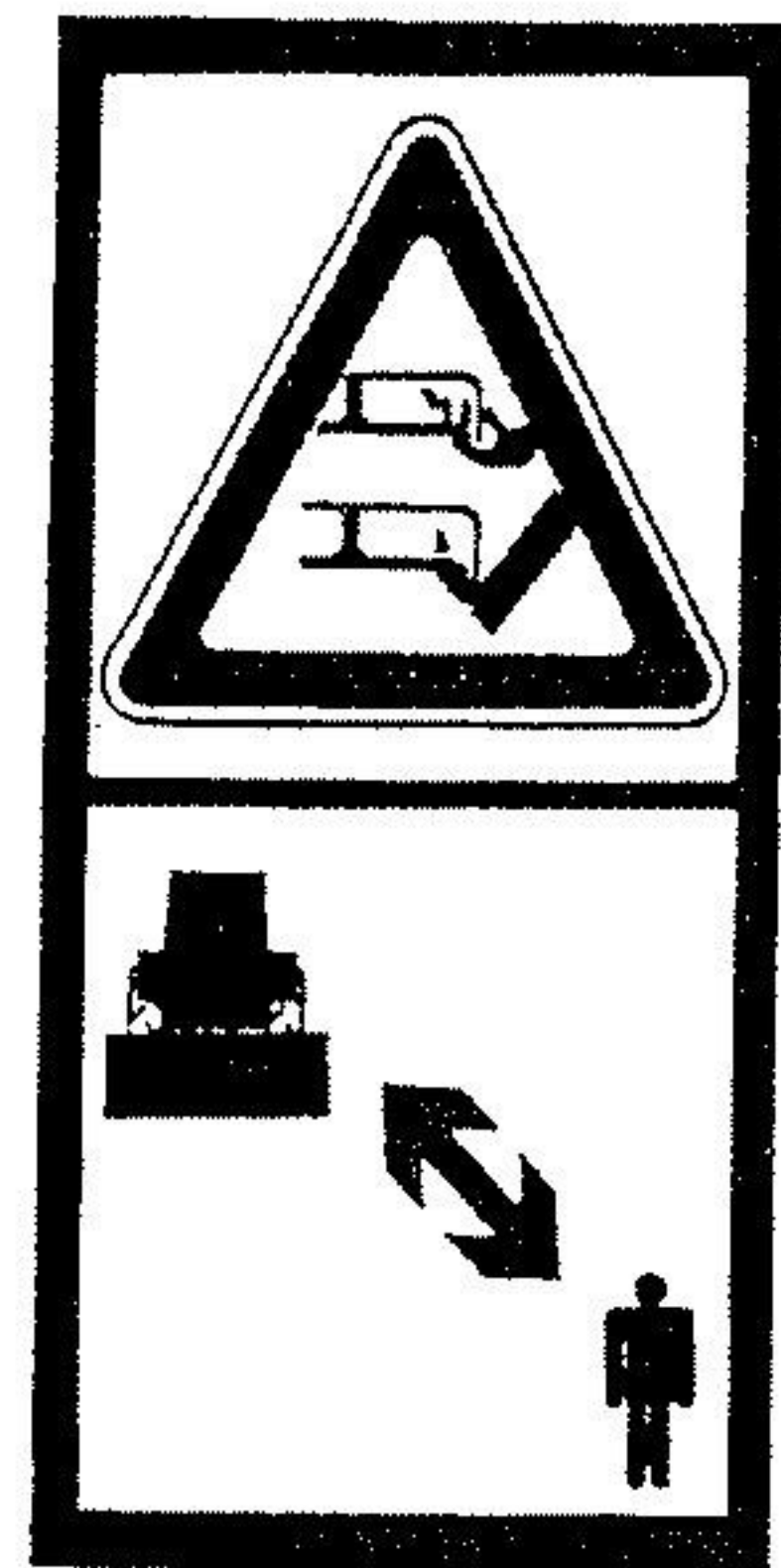
DANGER OF CRUSHING
STAY CLEAR OF ZONES



DO NOT WORK UNDER OR
STAND UNDER UNSUPPORTED
MACHINE



DANGER FROM THROWN
DEBRIS KEEP ALL PERSONNEL
AT SAFE DISTANCE FROM
THE MACHINE WHEN WORKING

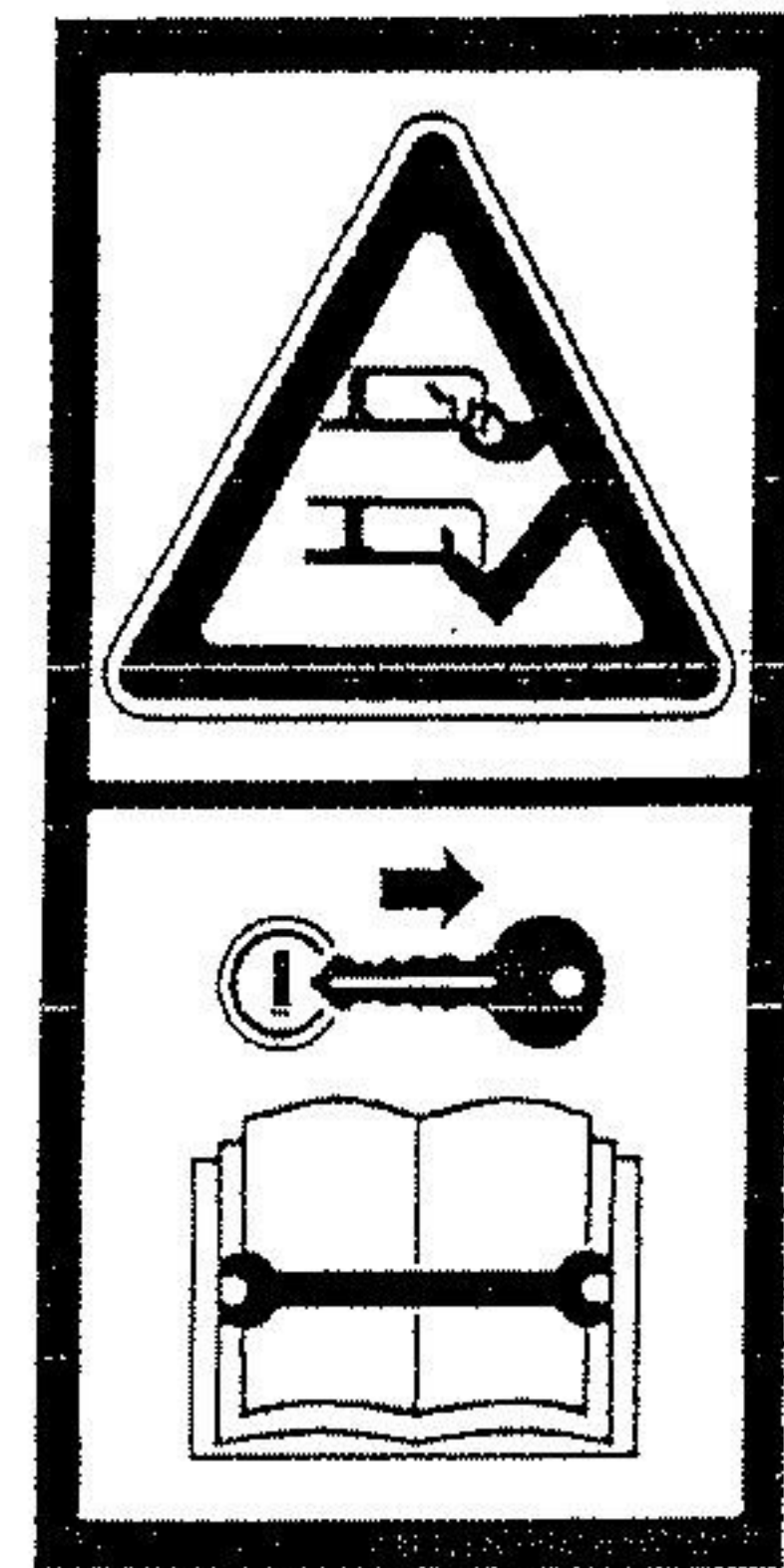


DANGER OF ROTATING
BLADES STAY CLEAR OF
OPERATING MACHINE



DANGER OF ENTANGLEMENT
IN SHAFT KEEP ALL PERSONNEL
CLEAR WHILE TRACTOR IS
RUNNING

STOP TRACTOR AND REMOVE
KEY BEFORE ATTEMPTING
MAINTENANCE ON OR
UNBLOCKING HEAD



4. SAFETY PRECAUTIONS

- 1 **DO NOT** attempt any maintenance of or adjustment to the machine while it is running. Before carrying out any work on the machine follow the three safety instructions below:
 - a **PUT THE PTO OUT OF GEAR**
 - b **STOP THE TRACTOR ENGINE**
 - c **LOWER THE CUTTING UNIT ON TO THE GROUND**

- 2 At all times ensure that the PTO shaft guard is in position, securely fitted and in good condition and that the tractor PTO shaft shield is fitted.
Replace the PTO shaft guard if any of the following are evident: guard cracked or damaged, any part of the PTO shaft exposed. Ensure the PTO shaft guard is free to rotate and the antirotation chains are securely fitted and effective.

- 3 Ensure that the correct guards for the particular operation are properly fitted to the machine and tractor at all times, and that they are in good condition. See section on Guards and Rotation.

- 4 **THINK SAFETY - WORK SAFELY.**
 - a **AVOID WIRE.** It can be extremely dangerous if wire catches in the rotor, and every care must be taken to ensure this will not happen. Inspect the working area before commencing. Remove all loose wire and obstructions and clearly mark those that are fixed so that you can avoid them.

 - b Any unusual noise from the cutting unit area indicates that the rotor may have been fouled by an obstruction. A visual indication that wire is in contact with the flails may be a sudden movement of the vegetation ahead of the cutting unit. In any such event **STOP** the tractor engine **INSTANTLY**. On no account move the cutting unit until the rotor has completely stopped. **NEVER IN ANY CIRCUMSTANCES** run the rotor to 'clear itself'.

 - c When the rotor has stopped inspect it and remove any obstruction that may be present. If working under a raised machine ensure that it is safely supported. Before working on the rotor always stop the tractor engine.

 - d **CHECK** the blades for wear and the attachment bolts for tightness every day during work (see Maintenance). A few moments whenever the machine is stopped, e.g. whenever removing obstructions, will help reduce blade wear or loss.

 - e Keep your forward speed to a level appropriate to the operating conditions. High speed manoeuvres are very dangerous, particularly on uneven ground.

 - f Keep a careful watch for passers by who may inadvertently get in the way of cut material being thrown from the cutting unit. Stop the rotor shaft until all people are well clear.

5 SAFETY DECALS

Safety decals are located on various points of the machine. They can be identified by the yellow upper panel depicting the hazard, and the lower white panel indicating means of avoidance or precautions to be taken. These decals have no text. It is essential that all operators and personnel associated with the machine fully understand their meanings, which are shown below. Any safety decals which are found missing should be replaced.

1 TRACTOR REQUIREMENTS

Ensure the specifications of the tractor meet the requirements listed below:

- a A 6 spline PTO of 1.3/8" dia.
- b A PTO output of 540 rev/min.
- c A Category I/II three-point linkage.

2 PREPARING THE TRACTOR

- a Remove any brackets or objects which may obstruct operation of lift arms.
- b Disengage PTO drive and expose PTO drive shaft.

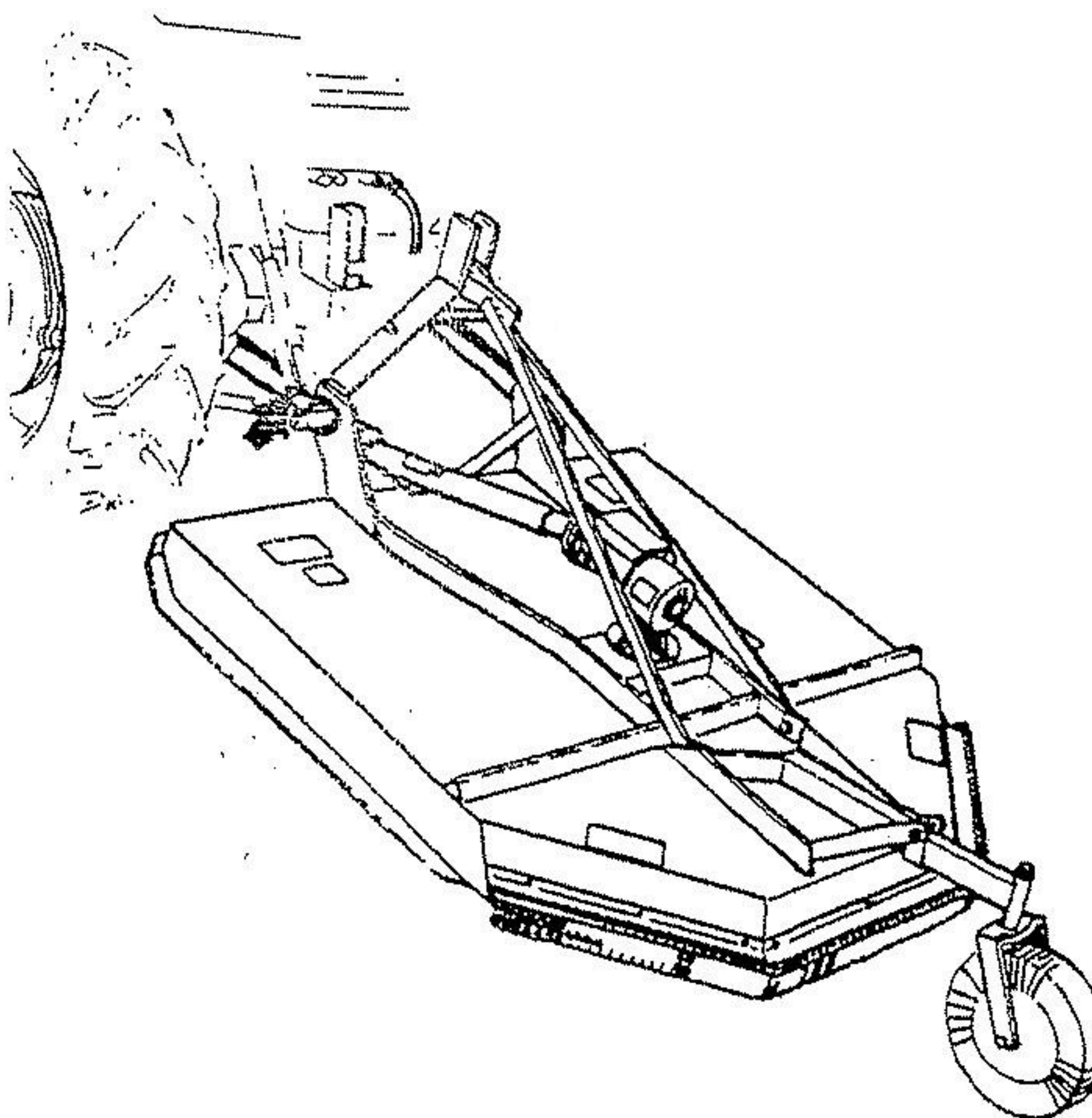
3 PREPARING THE MACHINE

The machine will normally be delivered fully assembled.

4 FITTING MACHINE TO TRACTOR

To fit the machine to the tractor the following instructions must be adhered to:

- a Disengage PTO drive.
- b Reverse tractor squarely to the machine.
- c Gradually reverse tractor until lift arm holes are level with mounting pins.
- d Fit left lift arm into mounting pin.
- e Adjust height of right lift arm if necessary.
- f Fit right arm on to the mounting pin then lock with linch pin.
- g Fit top stay of machine to top link on tractor, adjusting the length with the machine level on the skids.
- h Secure with pins provided with tractor.
- i Adjust lift arm check chains to prevent machine from swaying when raised.



5. INSTALLATION PROCEDURE

5 FITTING PTO

Due to many different makes and sizes of tractor to which TWOSE mowers can be fitted, a nominal length of PTO shaft is supplied with the machines. In some cases it may be found that this PTO shaft is too long and will have to be shortened.

IMPORTANT

MINIMUM ENGAGEMENT OF PTO SQUARE DRIVE IS 100MM (4IN) AND 150MM (6IN) FOR THE LEMON TUBE TYPE IN WORKING POSITION. THIS MEASUREMENT MUST BE TAKEN INTO ACCOUNT WHEN SHORTENING THE PTO SHAFT.

Before fitting PTO shaft to tractor, grease the sliding drive shafts and bearing units.

- a Fit PTO to tractor ensuring locking peg on the splined coupling is full engaged.
- b Attach PTO guard check chains to tractor and machine.

6 INITIAL RUN

- a Raise the machine off ground using tractor hydraulics.
- b Ensure nobody is standing near to the machine.
- c Run tractor engine at idle speed and engage PTO drive.
- d If rotor starts increase PTO speed gradually to 540 rev/min.
- e If rotor fails to start stop tractor engine and check PTO drive.
- f Allow the machine to run for approximately ten minutes.
- g Stop the machine immediately if excessive noise is heard or vibration is felt, and refer to section on 'Maintenance'.

7 GEARBOX LUBRICATION

The gearbox is filled with semi fluid grease before it leaves the factory, but it is advisable to check level before putting the machine to work by removing level plug situated in the rear of the gearbox.

8 GREASE POINTS

All grease points should be greased before operating the machine - see Section 8.

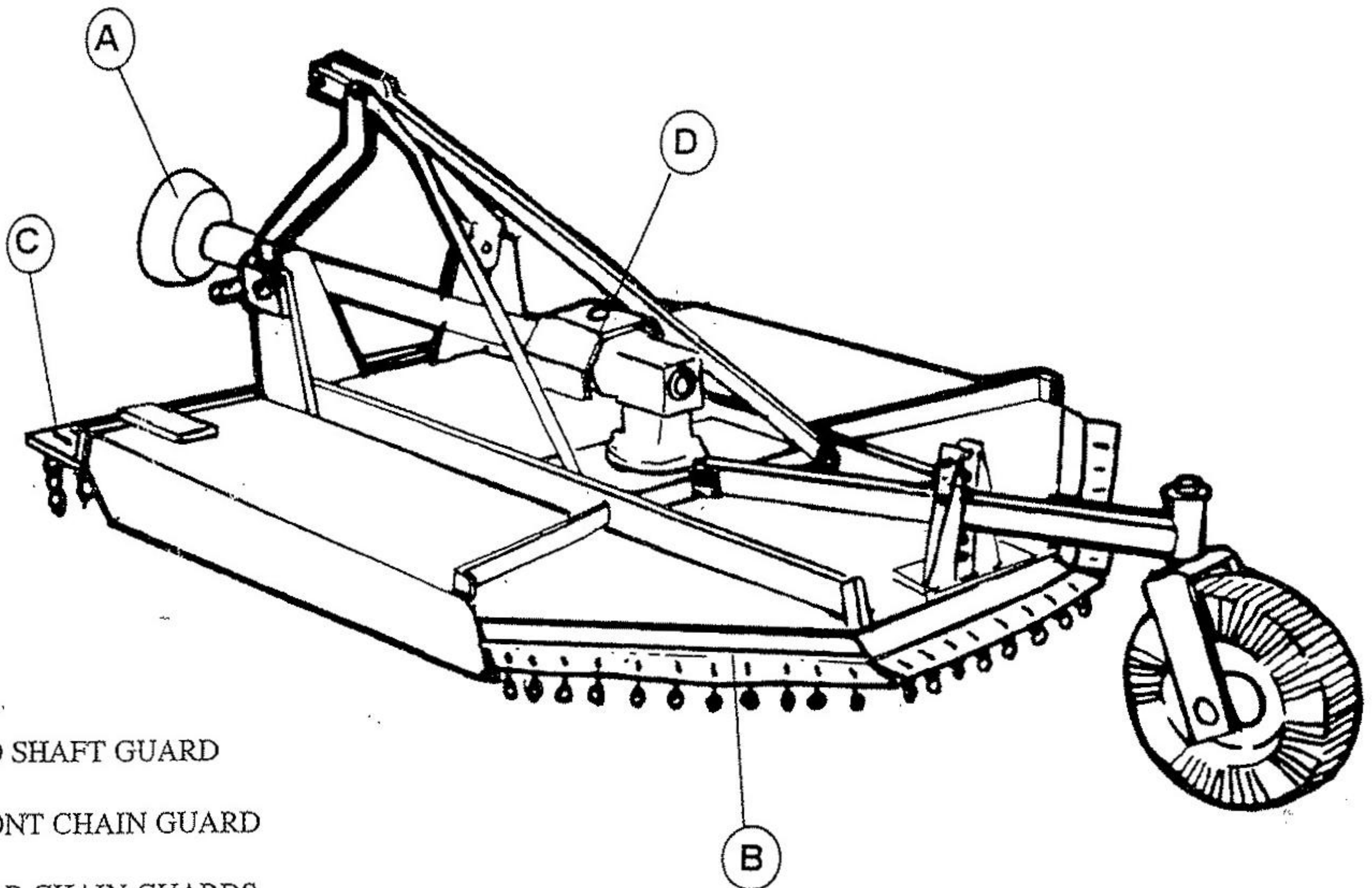
6. GUARDS

It is essential that in the interests of safety all guards must be kept in position on the machine and tractor whenever the machine is running.

TWOSE OF TIVERTON disclaim all responsibility for damage or injury arising as a result of guards being removed, or of guards other than of TWOSE OF TIVERTON manufacture being fitted, or of machine operation other than in accordance with these instructions.

- a Check that all guards are fitted correctly and that they are in good condition.
- b Inspect guards frequently. Replace any guards that have wear or damage which is likely to impair their operation.

If in doubt, consult TWOSE OF TIVERTON Service.



- A) PTO SHAFT GUARD
- B) FRONT CHAIN GUARD
- C) REAR CHAIN GUARDS
- D) GEARBOX DRIVE GUARD

7. GENERAL OPERATION

1 OPERATOR

These notes are produced for guidance and are intended to help you obtain the best results with the minimum of trouble and downtime.

Read the following pages carefully and familiarise yourself with their contents.

Make a note of the serial number stamped on the mainframe. Always quote this number in any correspondence with your dealer.

2 INITIAL CHECKS

Check that the tractor is equipped to deliver 540 rev/min at the power take-off shaft.
IN NO CIRCUMSTANCES MUST THE PTO EXCEED 600 REV/MIN.

3 NORMAL PRE-START CHECKS

- a Check that the rotors are free from obstructions, especially pieces of wire.
- b Check that all blades are in good condition and securely attached.
- c Check that all guards are in position and that they are in good condition.
- d Examine the job to be cut. It is very important that the work site is inspected before cutting and all hidden obstructions removed or their positions marked so that they may be avoided.
- e Check for wire, hidden stakes, drain pipes, large stones, etc.

4 NORMAL RUN UP

- a With a new machine never start cutting in arduous conditions. Allow for at least one day's light work for running-in.
- b Never attempt to start the machine while it is under load at any time. Always free rotor shaft from any obstructions.
- c Never increase or decrease PTO speed rapidly as this can lead to gearbox damage.

WARNING

STOP RUN IMMEDIATELY IF NOISE IS DETECTED FROM THE ROTORS OR GEARBOX AND REFER TO SAFETY INSTRUCTIONS IN SECTION 4.

5 TRANSPORT

Normally the machine will need to be drive to the work site. To put machine in transport position, follow the instructions below:

- a Raise machine from the ground using tractor hydraulics.

- b Lock in raised position.
- c Do not transport with PTO speed drive engaged.

6 OPERATING HINTS

- a Keep PTO speed at 540-550 rev/min to maintain rotor shaft speed.
- b AVOID wire. STOP the tractor engine instantly if an unusual noise is heard from the machine. On no account raise or move the cutting unit until the rotor has stopped. NEVER IN ANY CIRCUMSTANCES run the rotors "to clear themselves".
- c AVOID stumps and pipes, etc. Stalling in heavy growth may cause damage to the rotors.
- d DO NOT allow personnel near the machine while it is operating.
- e AVOID rushing into material when operating.
- f AVOID taking in too much material by selecting appropriate forward gear.

7 STALLING THE ROTOR

If the rotors do become choked the tractor will stall or the PTO clutch will slip. If this does occur follow the instructions below.

- a Stop forward motion, disengage PTO drive immediately and place PTO drive lever in neutral.
- b Lift the machine using tractor hydraulics.
- c Stop the tractor engine.
- d Remove any obstructions that may be present on the rotor. If working under the raised machine ensure that it is safely supported.
- e NEVER IN ANY CIRCUMSTANCES run the rotor "to clear itself".

8 HEIGHT OF CUT

The height of cut can be adjusted by moving the castor wheel arm in the multi-position clevis on the main deck.

8. MAINTENANCE AND STORAGE

1 POWER TAKE-OFF SHAFT

The PTO shaft used is of the normal agricultural type. Spares kits, comprising the spider, needle bearings, circlips, etc., are available from most agricultural dealers.

For correct part numbers, which must be quoted when ordering spares, see parts manual.

Some routine maintenance is need to ensure a trouble free life for the PTO shaft. For best results follow instructions below.

- a Regularly grease PTO shaft sliding tubes.
- b Grease both ends of PTO shaft daily.
- c Ensure check chains are securely attached and in good condition.
- d Check that PTO guard is in good condition and replace if not.
- e Check universal joint bearing journals for roughness or slackness - replace if necessary.

2 SLIP CLUTCH

A slip clutch is incorporated in the PTO driveline. It is designed to slip, absorb the shock load, and protect the driveline.

Clutch torque setting is factory set. If clutch slips excessively, check friction discs for excessive wear. Discs are 3mm thick when new. Replace after 0.75mm wear.

If your slip clutch has a compression spring check length of springs as assembled on clutch. Length should be 33mm. If not adjust length of bolt to obtain proper spring length. If additional adjustment is required tighten each bolt 1/2 turn.

Note: DO NOT tighten spring bolts over 1/2 turn at any adjustment. Excessive tightening can cause clutch to become frozen and not slip which could cause damage to tractor PTO, drivelines or gearbox.

3 GREASING

The lubrication chart below shows the frequency at which the greasing points should be lubricated:

PTO SHAFT BEARINGS	Weekly
PTO SHAFT TUBES	Weekly
CASTOR WHEEL	Weekly

DO NOT overgrease or it could cause overheating and damage to bearing seals.

4 ROTORS

Vibration of the rotor can cause premature failure of the rotor shaft bearings, as well as structural failures. It is important not to operate the machine with the rotor vibrating. As soon as any vibration is felt stop operating the machine and make the checks listed below.

8. MAINTENANCE AND STORAGE

- a Stop tractor engine and neutralise PTO drive.
- b Check for missing blades. Replace missing flails immediately.
- c Check and ensure that all blade attachments are tight. If any blades are missing or loose and have been replaced and tightened, run the rotors and test for vibration. If vibration is still present, check as follows.
- d Stop tractor engine and neutralise PTO drive.
- e Check rotor gearbox bearings for roughness or signs of slackness.
- f Replace bearings which suffer the above symptoms. If vibration persists it is an indication that the rotor is probably bent and must therefore be replaced.

5 STORAGE

Before removing the machine from the tractor a thorough check should be made. Follow instructions below.

- a Thoroughly clean all moving parts, particularly the rotors.
- b Check that all flails are in place and that they are in good condition.
- c Smear all unpainted metal parts with grease and lubricate all grease nipples.
- d Make a note of any item that needs replacing so that parts can be ordered.

6 PARKING AND REMOVAL

In the parking position the machine rests on the skids at both sides. To put the machine in this position the following procedure is necessary.

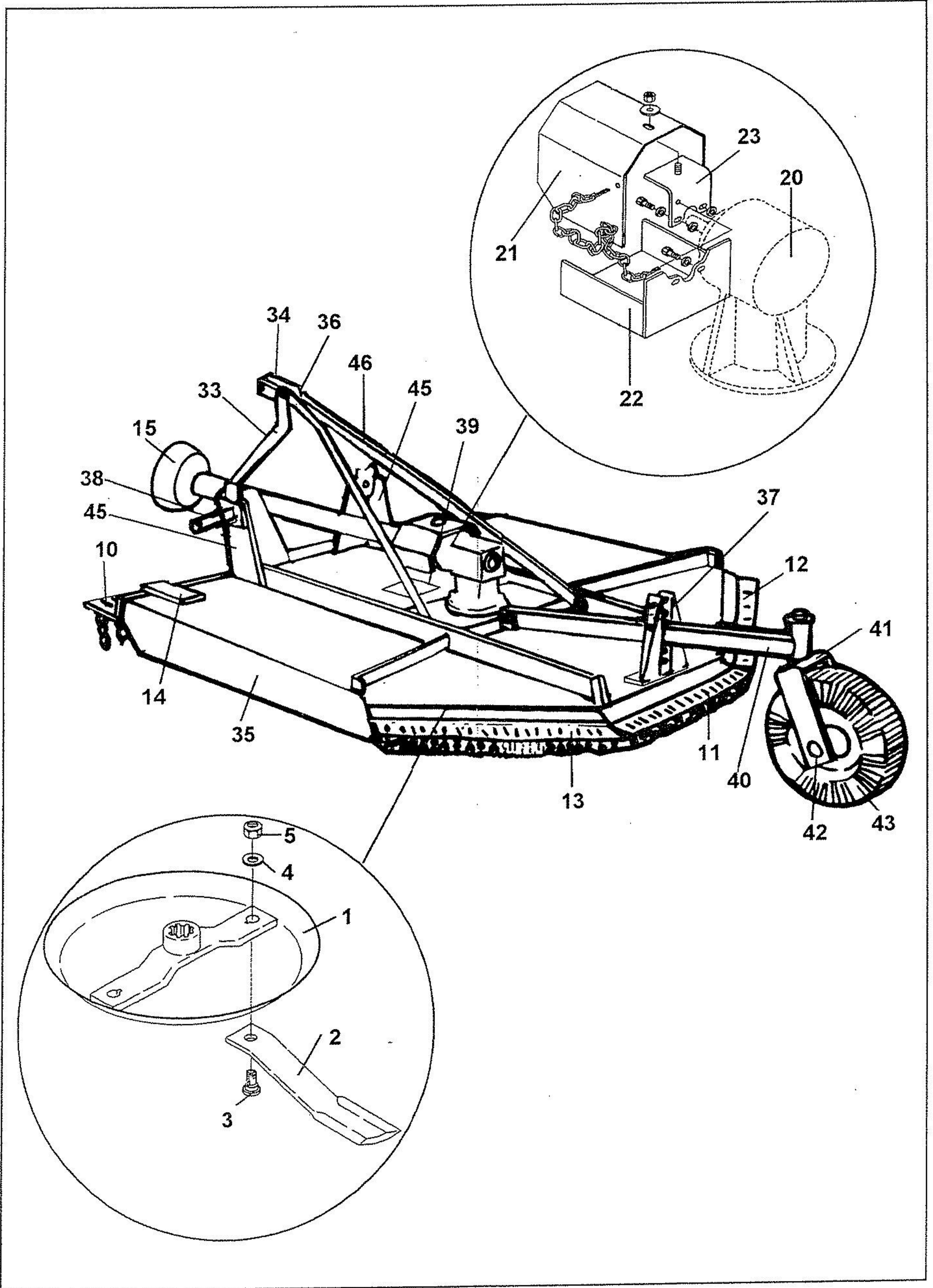
- a Remove the bolt from the height adjusting clevis on the main deck to allow the castor arm to swing up.
- b Lower the machine to the ground using the tractor hydraulics.
- c Stop tractor engine and disengage PTO drive.
- d Slacken lift arm and check chains.
- e Remove top link.
- f Remove linch pin and rings securing lift arms to mounting pins.
- g Remove mounting pins from mounting clevis and lift arms.
- h Grease mounting pins.
- i Replace linch pins.
- j Release tractor end of PTO shaft and pull back along splines.
- k Start tractor engine and drive carefully forward.
- l Grease spline and tubes of PTO and store with the machine or keep in a safe dry place.

SPARE PARTS SECTION

CTE RANGE OF ROTARY TOPPERS

NOTE: PAGE ILLUSTRATION NUMBERS SHOWN ARE USED ONLY FOR REFERENCE PURPOSES AND SHOULD NOT BE USED FOR ORDERING REPLACEMENT PARTS.

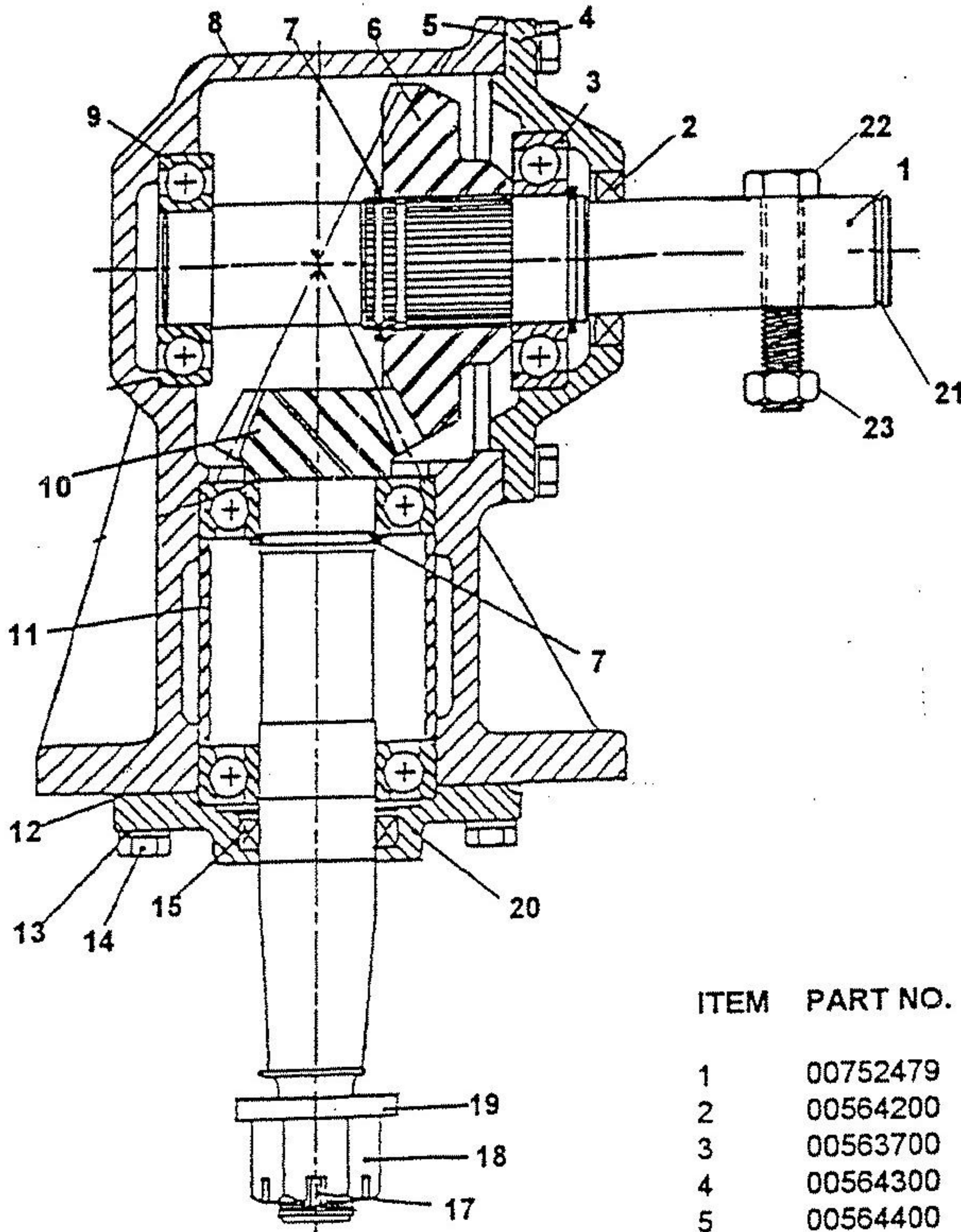
PLEASE ENSURE THE CORRECT PART NUMBER AND DESCRIPTION IS GIVEN WHEN ORDERING SPARE PARTS TOGETHER WITH THE MACHINE SERIAL NUMBER



CTE4 ROTARY TOPPER

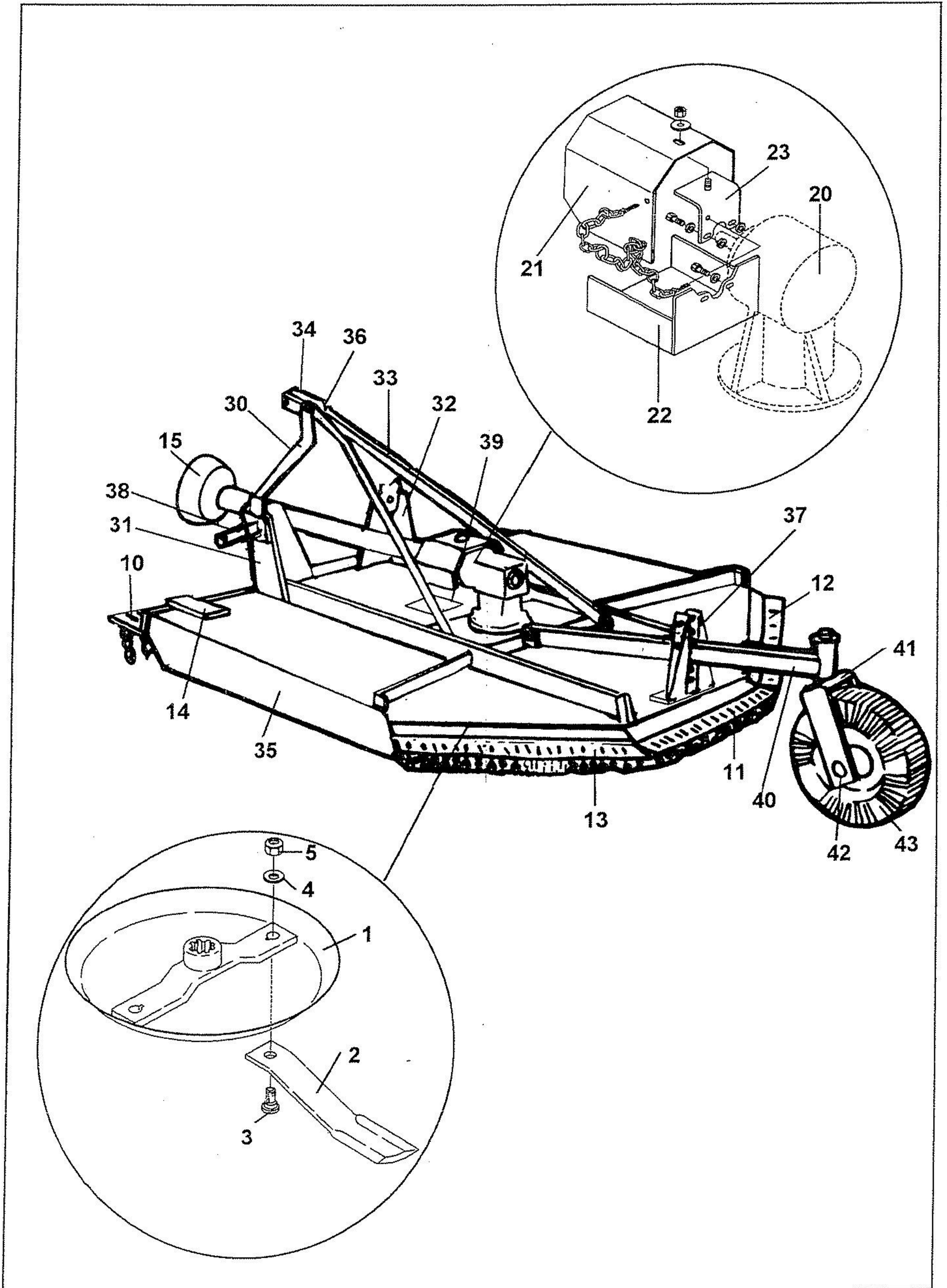
REF	PART NO.	DESCRIPTION	QTY
76.243.03	TWOSE CTE4	PARTS 8425	
01	00766590R	PAN FABRICATION BLADES	1
02	1046008	BLADE - HIGH LIFT ACW	2
03	15B1400	WASHER "A" TYPE	2
03	00761402	BOLT	2
10	45610.04	CHAIN GUARD ASSY FRONT	1
11	45610.01	CHAIN GUARD ASSY CENTRE REAR	1
12	45610.02	CHAIN GUARD ASSY RH REAR	1
13	45610.03	CHAIN GUARD ASSY LH REAR	1
15	00759161A	PTO SHAFT	1
20	00758654	BREATHER GEARBOX 1/2" BSP	1
20	00761655	GEARBOX INC SLOTTED NUT	1
20	0431104	SPRING COTTER 1/8" DIA	1
20	7192	CIRCLIP	1
21	00772588R	GUARD PLATE	1
21	45641.01	GUARD	1
22	00762985A	GUARD	1
23	00772590R	GUARD PLATE	1
33	00766505	BAR "A" FRAME	2
34	00757949R	LINK TOP	1
34	00766542	BUSHING "A" FRAME	1
34	37107B12	TOP LINK PIN	1
35	00773755R	DECK FABRICATION	1
37	00766611	GAUGE WHEEL MOUNT	1
38	00.372.01	LINCH PIN	2
38	00012200	LOCKNUT WASHER	2
38	00603500	WRIST PIN	2
38	00603600	NUT	2
40	45619.01	BEAM - TAIL WHEEL EXTENDED	1
41	00773565R	FORK FABRICATION REAR WHEEL	1
42	00773566R	SPINDLE - TAIL WHEEL FORK	1
43	00773567	WHEEL & TYRE ASSY	1
45	00774269R	LUG - HITCH	2
46	00766610	MOUNTING FLAT	1
46	00773564R	BRACE REAR BAR	2

*MAIN PART IN GROUP, RELATED PARTS HAVE SAME REFERENCE NUMBER



ITEM	PART NO.	QTY	DESCRIPTION
1	00752479	1	Input Shaft
2	00564200	1	Seal
3	00563700	3	Ball Bearing
4	00564300	1	Input Cap
5	00564400	AR	Gasket
6	00752481	1	Input Gear
7	00564100	3	Retaining Ring
8	00563900	1	Housing
9	00564800	1	Bearing
10	00752480	1	Output Pinion & Shaft
11	00757682	1	Bearing Spacer
12	00760928	AR	Gasket .25
	00760929	AR	Gasket .10
13	02161100	10	Lockwasher
14	00011400	10	Bolt
15	00563500	1	Seal
17	05-03-165	1	Cotter Pin
18	7202	1	Slotted Nut
19	01-00-109	1	Washer
20	00757683	1	Output Cap
21	7192	1	Circlip
22	7A81324	1	Shear Bolt
23	00001800	1	Locknut

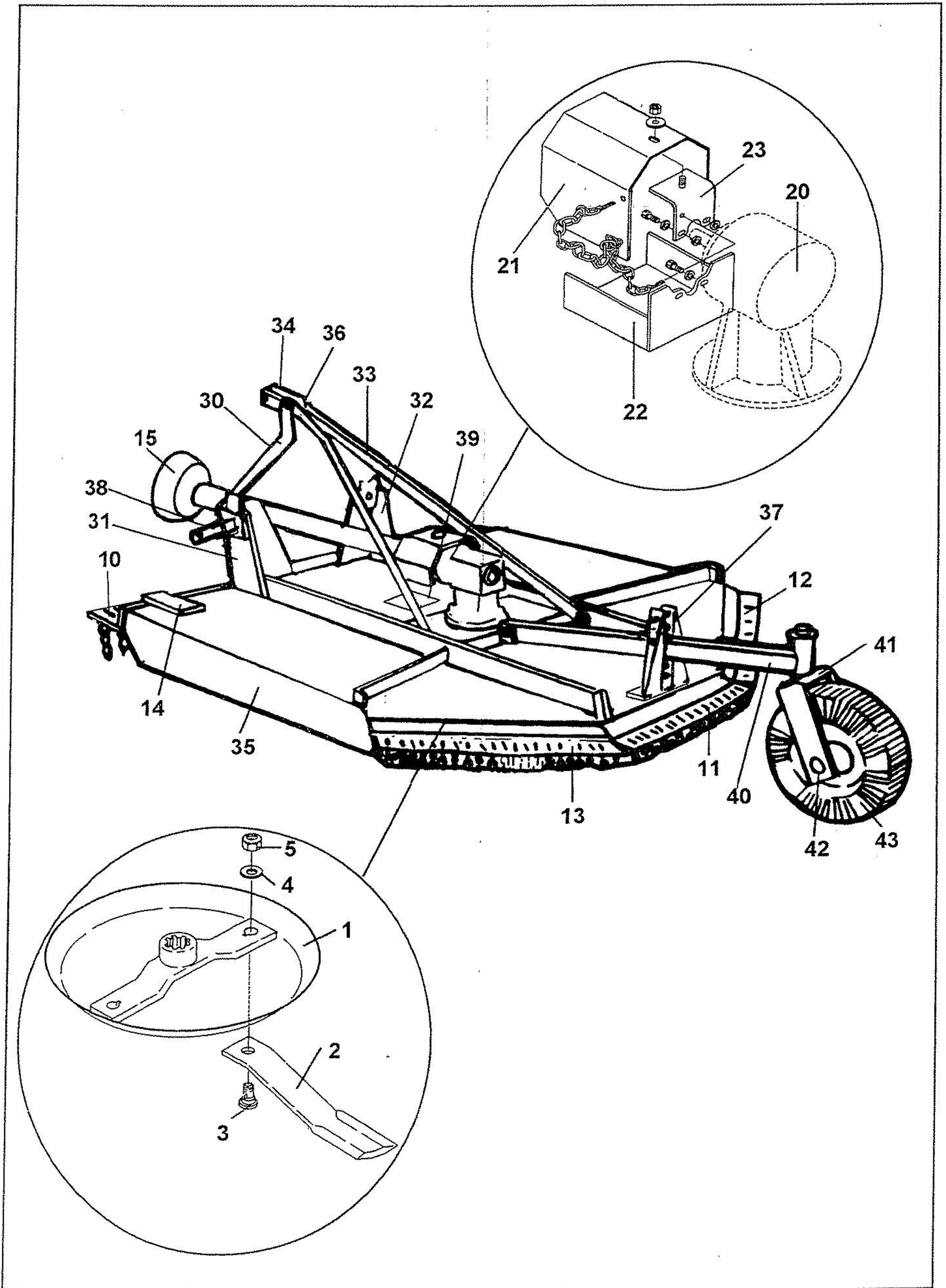
This page is intentionally left blank.



CTE5 ROTARY TOPPER

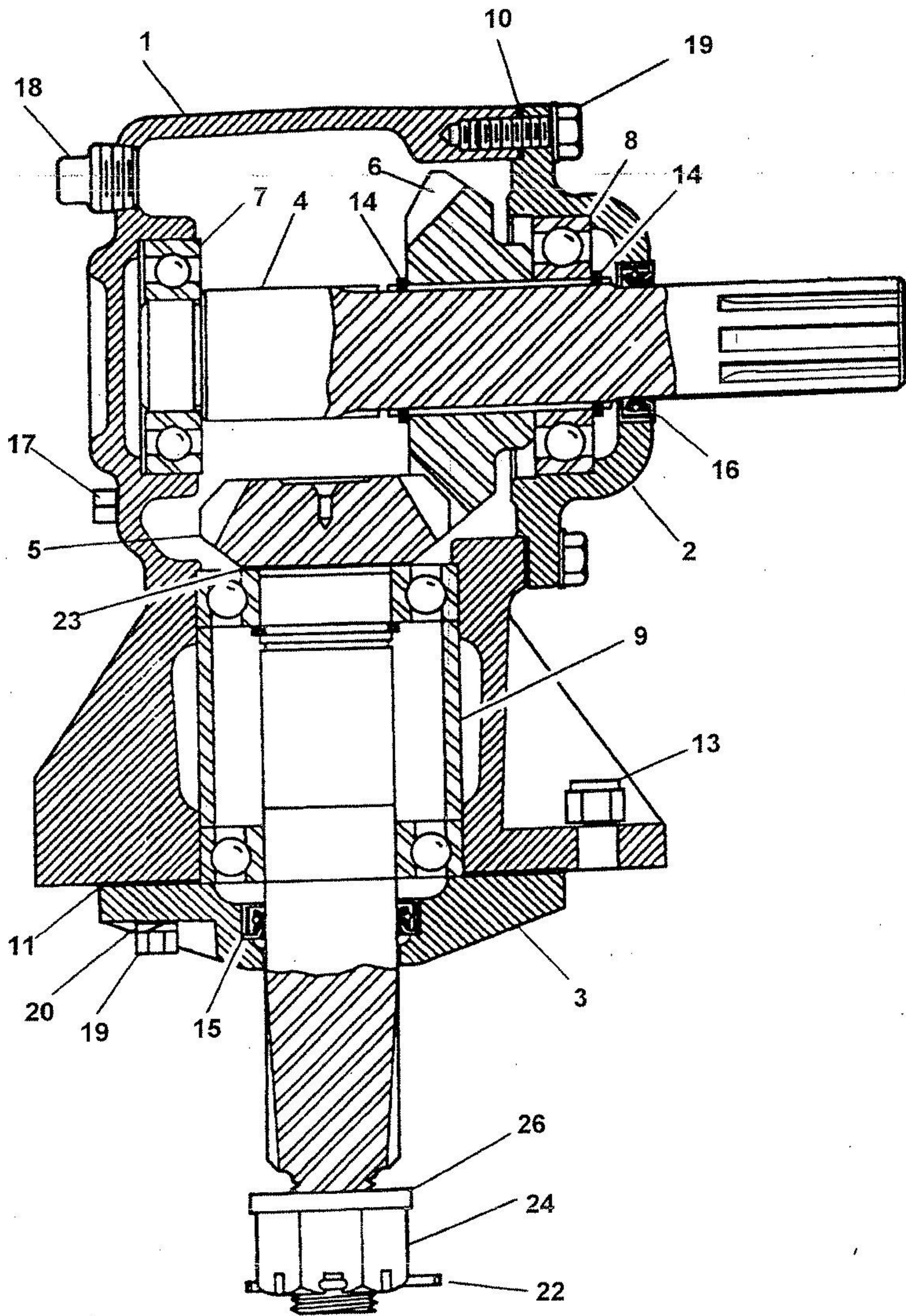
REF	PART NO.	DESCRIPTION	QTY
76.234.01 CTE5 ROTARY TOPPER			
*01	00766590	BLADE PAN	1
01	05.964.01	SPRING COTTER 3.6MM DIA	1
02	00764665	BLADE ANTICLOCKWISE	2
03	00761402	BOLT	2
04	00761535	WASHER	2
05	0141008	NUT 7/8" UNF CLEVELOCK	2
10	00766575	CHAINGUARD FRONT	1
11	00766560	CHAINGUARD REAR CENTRE	1
12	00766564	CHAINGUARD REAR RH	1
13	00766567	CHAINGUARD REAR LH	1
14	00766610	MOUNTING FLAT	1
*15	00759318	PTO SHAFT SE-5	1
15	43204.01	SLIPCLUTCH ASSY RS15/18	0
20	00758654	BREATHER GEARBOX 1/2" BSP	1
*20	0711050100	GEARBOX INC SLOTTED NUT	1
21	00766581	PLATE 2 - 606 X 305	1
22	00766526	PLATE BRKT BOTTOM	1
23	00766559	HOOD BRACKET	1
30	00766505	BAR "A" FRAME	2
*31	00766586	PLATE HITCH EAR LH	1
31	05.264.24	SETSCREW M12 X 35MM PLATED*	4
31	05.264.25	SETSCREW M12 X 40MM PLATED*	2
31	05.281.03	FLAT WASHER 12MM PLATED*	1
31	05.287.03	SELF-LOCKING NUT M12 PLATED*	3
32	00766587	PLATE HITCH EAR RH	1
33	00766506	BAR LIFT STRAP	2
34	00766540	LINK TOP	1
35	00766609	WELDMENT DECK	1
36	00766542	BUSHING "A" FRAME	1
*37	00766611	GAUGE WHEEL MOUNT	1
37	05.281.14	FLAT WASHER 14MM	4
37	05.968.06	S.LOCKING NUT M14 (FINE) PLATE	4
37	9200016	M14 X 1.5 SETSCREW 40 LG	4
*38	00.372.01	LINCH PIN	2
38	00603500	WRIST PIN	2
39	05.264.12	SETSCREW M10 X 25MM PLATED*	2
*39	1028006	PLATE COVER	1
39	1028007	STRIP TAPPED	1
40	00766517	TAILWHEEL BEAM	1
41	00766523	CASTOR FORK	1
42	0891030300	PIN	1
42	5JRC16140	LOCKNUT	1
43	00013600	SEAL	0
*43	00130010	WHEEL TYRE / INNER RACES	1
43	00750621	BEARING) order	0
43	00013701	BEARING CONE) both	0
43	00765337	SPACER	2
43	05.953.01	GREASE NIPPLE M6*	1
43	41346.01	STRAP - TRANSPORT	1
43	9213266	M12 X 130MM HEX.HD.BOLT HT	4
45	42255.01	SPACER - FRONT GUARD	2

*MAIN PART IN GROUP, RELATED PARTS HAVE SAME REFERENCE NUMBER



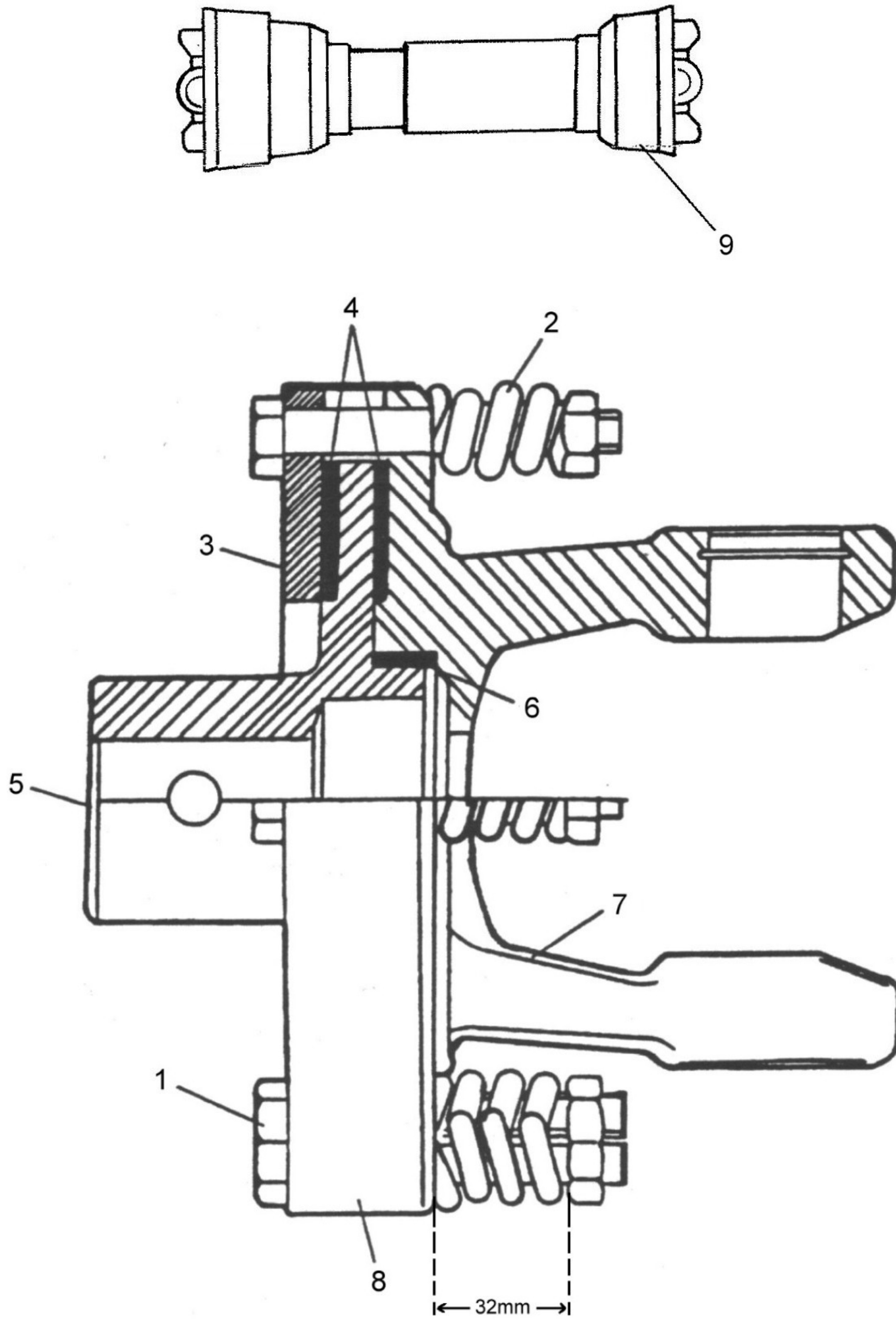
CTE6 ROTARY TOPPER

REF	PART NO.	DESCRIPTION	QTY
	76.236.01	CTE6 ROTARY TOPPER	
01	00770064	BLADE PAN	1
02	1046006	BLADE	2
03	00761402	BOLT	2
04	00761535	WASHER	2
05	0141008	NUT 7/8" UNF AERO-STANDARD	2
10	00766539	CHAINGUARD FRONT	1
11	00766529	CHAINGUARD REAR CENTRE	1
12	00766522	CHAINGUARD REAR RH	1
13	00766527	CHAINGUARD REAR LH	1
14	00766536	MOUNTING FLAT	2
15	00759318	PTO SHAFT	1
20	00758654	BREATHER GEARBOX 1/2" BSP	1
*20	0711050100	GEARBOX INC SLOTTED NUT	1
21	00766581	PLATE SHIELD	1
22	00766526	PLATE BRKT BOTTOM	1
23	00766559	HOOD BRACKET	1
30	00766595	BAR "A" FRAME	2
*31	00766586	PLATE HITCH EAR LH	1
31	05.264.24	SETSCREW M12 X 35MM PLATED	4
31	05.264.25	SETSCREW M12 X 40MM PLATED	2
31	05.281.03	FLAT WASHER 12MM PLATED	1
31	05.287.03	SELF-LOCKING NUT M12 PLATED	3
32	00766587	PLATE HITCH EAR RH	1
33	00766591P	BAR LIFT STRAP	2
34	00766540	LINK TOP	1
35	00766632R	WELDMENT DECK	1
36	00766542	BUSHING "A" FRAME	1
*37	00766611	GAUGE WHEEL MOUNT	1
37	00766610	MOUNTING FLAT	1
37	05.281.14	FLAT WASHER 14MM	4
37	05.292.21	BOLT M12 X 80MM PLATED	2
37	05.968.06	S.LOCKING NUT M14 (FINE) PLATE	4
37	9200016	M14 X 1.5 SETSCREW 40 LG	4
38	00.372.01	LINCH PIN	2
*38	00603500	WRIST PIN	2
39	05.264.12	SETSCREW M10 X 25MM PLATED	2
39	05.294.03	SHAKEPROOF WASHER 3/8" PLATED	2
*39	1028006	PLATE COVER	1
39	1028007	STRIP TAPPED	1
40	00771599	TAILWHEEL BEAM	1
41	00766523	CASTOR FORK	1
42	00766603	SPINDLE C/W LOCK NUT	1
*43	00130010	WHEEL TYRE / INNER RACES	1
43	00013701	BEARING CONE) order	20
43	00750621	BEARING) both	0
43	00765337	SPACER	1
43	00013600	SEAL	2
43	05.953.01	GREASE NIPPLE M6	1
43	0891030300	PIN	1
45	42255.01	SPACER - FRONT GUARD	2
46	41346.01	STRAP - TRANSPORT	1



ITEM	PART NO.	QTY.	DESCRIPTION
1	00563900	1	MAIN HOUSING
2	00564300	1	FRONT HOUSING
3	00757683	1	BEARING RETAINER CAP
4	00564700	1	SHAFT, INPUT
5	00564000	1	SHAFT & PINION GEAR
6	00564600	1	INPUT GEAR
7	00564800	1	BALL BEARING
8	00563700	3	BALL BEARING
9	00757682	1	BEARING SPACER
10	00564400	AR	SHIMS
11	00760929	AR	GASKET .25
-	00760928	AR	GASKET .1
12*	7192	1	RETAINING RING
13	02956948	4	LOCKNUT
14	00564100	3	RETAINING RING
15	00563500	1	OIL SEAL
16	00564200	1	OIL SEAL
17	00565000	1	PIPE PLUG
18	00749508	1	PIPE PLUG
19	00011400	6	BOLT
20	02161100	10	LOCKWASHER, EXT. TOOTH
21*	02-12-245	1	BOLT
22	05-03-245	1	COTTERPIN
23	00758671	AR	SHIM - GEAR
24	7202	1	HEXSLOTTED NUT
25*	00001800	1	LOCKNUT
26	6192	1	FLAT WASHER SPECIAL

* NOT INCLUDED w/GEARBOX ASSEMBLY



REF.	QTY.	PART No.	DESCRIPTION
1	8	00762249	BOLT
2	8	00762250	SPRING
3	1	00762247	OUTER FLANGE
4	2	00752902	FRICTION DISC
5	1	00762243	BODY - FRICTION CLUTCH
6	1	00762251	SPACER
7	1	00762244	YOKE FRICTION
8	1	00762252	DIRT SHIELD
9	1	00759318	SHAFT ASSY.

CTE7 ROTARY TOPPER

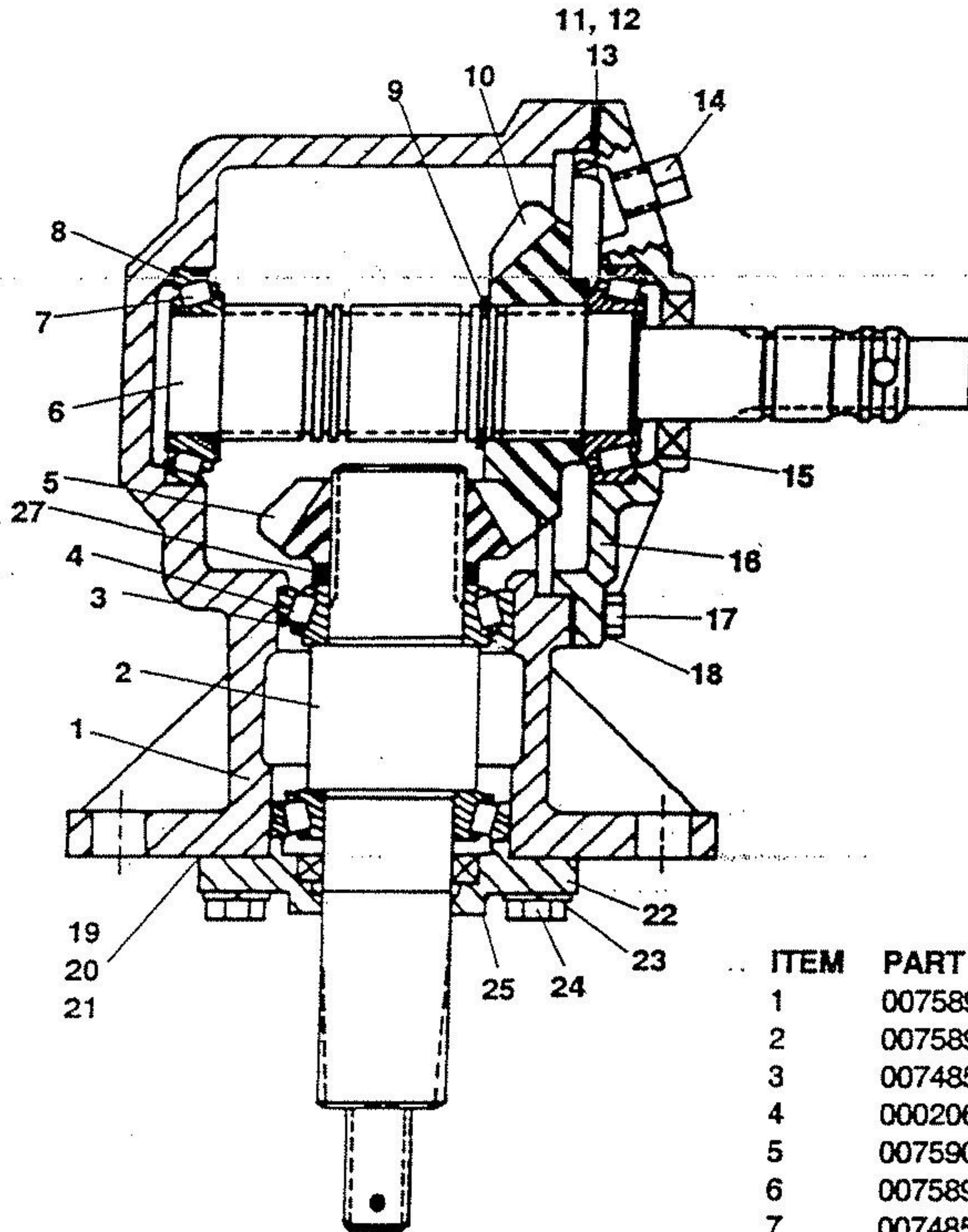
REF	PART NO.	DESCRIPTION	QTY
	76.244.01	CTE7 ROTARY TOPPER	
01	00766159	DISHPAN W/ASSY	1
02	00764669	BLADE ANTICLOCKWISE	2
03	8251	BOLT	2
04	9216	WASHER	2
05	5JRC16140	LOCKNUT	2
11	7521M	GUARD REAR CNTR MOD'D	1
12	7528M	GUARD REAR R H MOD'D	1
13	7529M	GUARD REAR L H MOD'D	1
15	00761329	PTO SHAFT	1
20	00758654	BREATHER GEARBOX 1/2" BSP	1
*20	741031	GEARBOX	1
21	00764254	SHIELD PLATE	1
22	00762985	BOTTOM BRACKET	1
23	7540	BRACKET HOOD	1
26	00763040	GUARD FRONT R H MOD'D	1
27	00763041	GUARD FRONT L H MOD'D	1
29	8105	FRONT HITCH RH	1
30	8121	FRONT HITCH LH	1
31	8660	HITCH EAR RH	1
32	8661	HITCH EAR LH	1
33	8103	HITCH BRACE	2
34	7518	REAR BRACE	2
*35	00766158	MAINSHIELD W/ASSY	1
35	05.227.01	HAMMER DRIVE SCREW NO.6 X 3/8"	2
36	8659	TOP LINK	1
40	1028262	BEAM TAIL WHEEL	1
41	00762747	WHEEL MOUNT	1
42	0891030300	SPINDLE	1
43	0891030200	WHEEL	1
45	8665	ADJUSTING FLAT	2

**FOR INFORMATION ON THE CTE7 ROUND BACK
TOPPER CONTACT:-**

TWOSE OF TIVERTON

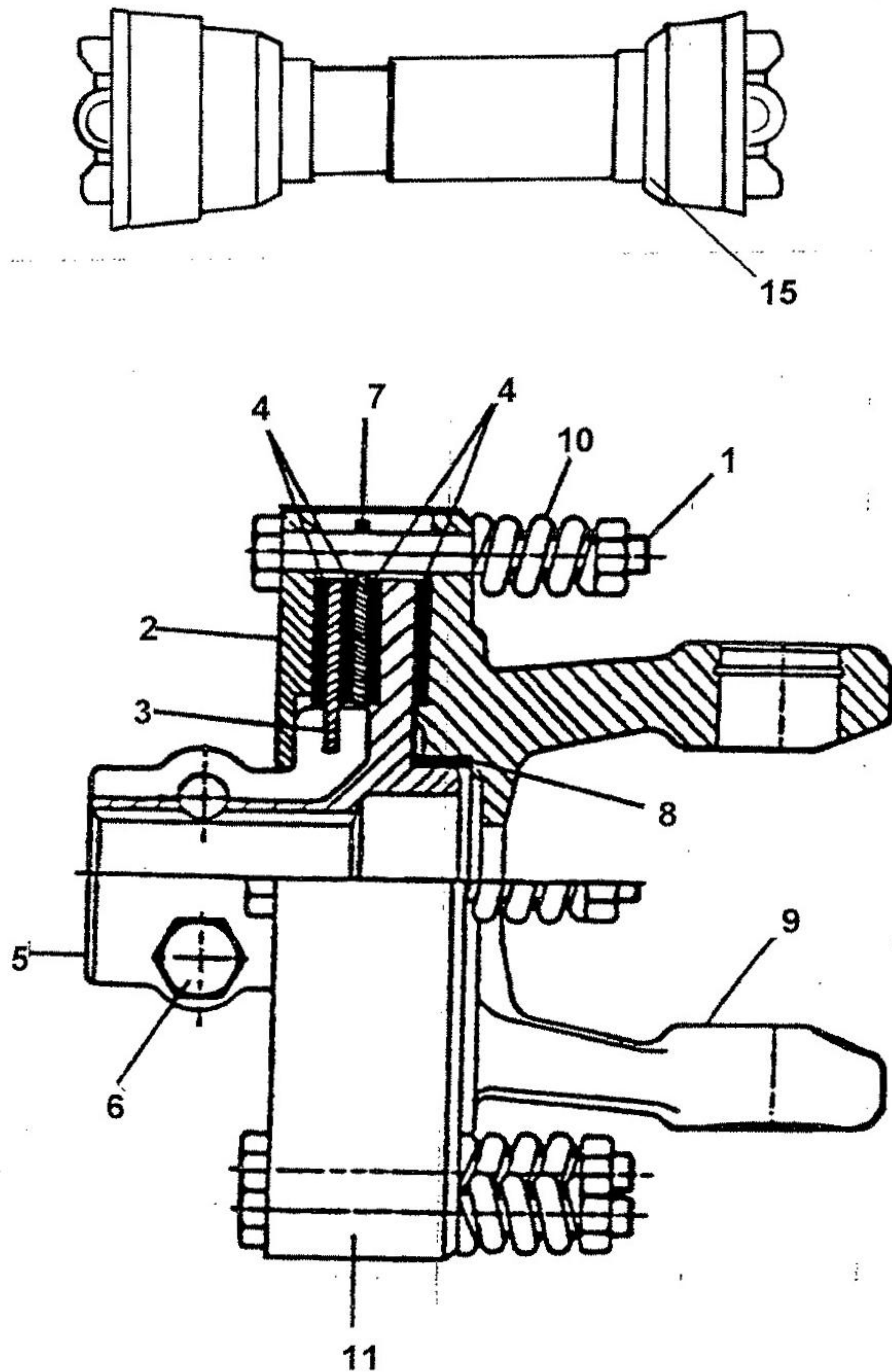
*MAIN PART IN GROUP, RELATED PARTS HAVE SAME REFERENCE NUMBER

This page is intentionally blank



ITEM	PART NO.	QTY	DESCRIPTION
1	00758989	1	Housing
2	00758990	1	Output Shaft
3	00748522	2	Bearing Cone
4	00020600	2	Bearing Cup
5	00759055	1	Output Gear - 14 Teeth
6	00758991	1	Input Shaft
7	00748527	2	Bearing Cone
8	00748525	2	Bearing Cup
9	00748526	1	Retaining Ring
10	00759054	1	Input Gear - 17 Teeth
11	7010420	AR	Gasket 0.3
12	7010420	AR	Gasket 0.15
13	7010420	AR	Gasket 0.1
14	00753630	2	Pipe Plug
15	00753644	1	Seal
16	741035	1	Input Cap
17	00753642	8	Capscrew
18	00753633	8	Lockwasher
19	00748520	AR	Gasket 0.3
20	00748520	AR	Gasket 0.15
21	00748520	AR	Gasket 0.1
22	00752155	1	Output Cap
23	00753743	4	Lockwasher
24	00748823	4	Capscrew
25	00753634	1	Seal
26	00753631	1	Pipe Plug (Not Shown)
27	00759053	1	Spacer

AR - As Required



ITEM	PART NO.	QTY.	DESCRIPTION
1	00754199	8	NUT & BOLT
2	00754203	1	PRESSURE PLATE
3	00754201	1	INNER PLATE
4	00754202	4	CLUTCH LINING
5	00754300	1	CLUTCH BODY
6	00752903	2	BOLT & NUT SET
7	00754314	1	PLATE WITH HOLES
8	00754301	1	SPACER
9	00754302	1	YOKE
10	00754303	8	CLUTCH SPRING
15	00761329	1	SHAFT ASSEMBLY

DECALS

REF	PART NO.	DESCRIPTION	QTY
76.735.01 DECALS TWOSE TOPPERS 8425			
	05.227.01	HAMMER DRIVE SCREW NO.6X3/8**	2
	09.811.04	DECAL - MAX PTO SPEED 540 ACW	1
	09.821.10	DECAL - KEEP NUTS TIGHT	1
	09.821.16	DECAL - KEEP OUT ZONE	1
	09.821.17	DECAL - UNSUPPORTED MACHINE	1
	09.821.18	DECAL - THROWN DEBRIS	1
	09.821.19	DECAL - ROTARY HEAD DANGER	1
	09.821.20	DECAL - SHAFT ENTANGLEMENT	1
	09.821.22	DECAL - UNBLOCK HEAD(ROTARY)	1
	45429.01	S/N PLATE TWOSE	1
	T1720162	TRANSFER ROTARY TOPPER	2
	T410184	TRANSFER HI-LIGHTER	2
	T410185	TRANSFER TWOSE LARGE BLACK	2
	T8007	BAG POLYFOLIO	