

SCHULTE®

5026

ROTARY CUTTER

Published 02/06

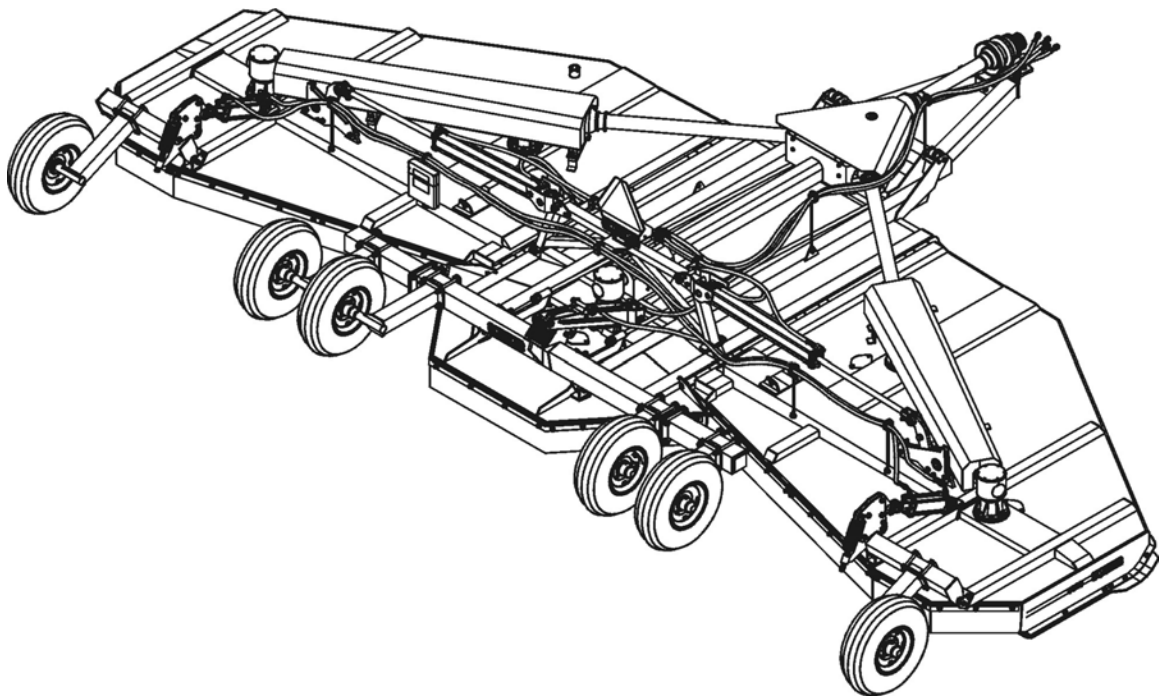
S/N C50200890602 - C50200919602 inclusive

Part No. C502CE010P

PARTS MANUAL



An Operators Manual with **IMPORTANT** Safety, Assembly, Operation and Maintenance information was packaged with this Parts Manual during final inspection at the factory. If the Operators Manual is missing at any time, please contact Schulte Industries Ltd. at (306) 287-3715 to receive your free replacement manual.



Schulte Industries Ltd.

P.O. Box 70
Englefeld Saskatchewan
Canada S0K 1N0
Tel. (306) 287-3715
Fax. (306) 287-3355
Parts Fax. (306) 287-4066
Email: info@schulte.ca



ISO 9001:2000



© 2006 Alamo Group Inc.

PARTS ORDERING GUIDE

The following instructions are offered to help eliminate delay and error in processing purchase orders for the equipment in this section.

1. The Purchase Order must include the name and address of the person or organization ordering the parts, who should be charged, and if possible, the serial number of the machine for which the parts were ordered.
2. The Purchase Order must clearly list the quantity of each part, the complete and correct part number, and the description of the part.
3. Schulte Industries Ltd reserves the right to substitute parts where applicable.
4. Schulte Industries Ltd reserves the right to change prices without prior notice.

NOTE: Please refer to the Safety Section in the front of the Operators Manual for the proper Part Number when ordering Replacement Safety Decals. Safety decals are available free of charge from the Schulte Parts Department.

NOTE: If the Operators Manual does not accompany this Parts Manual please obtain one, free of charge from the Schulte Parts Department. DO NOT operate this implement unless you READ, UNDERSTAND, and FOLLOW the Safety and Operation instructions contained in the Operators Manual

NOTE: Please note that the appearance of some parts may vary from the artwork shown in the Manual.



For maximum safety and to guarantee optimum product reliability, always use genuine Schulte Parts. The use of inferior replacement parts may cause premature or catastrophic failure which could result in serious injury or death. Direct any questions regarding parts to:

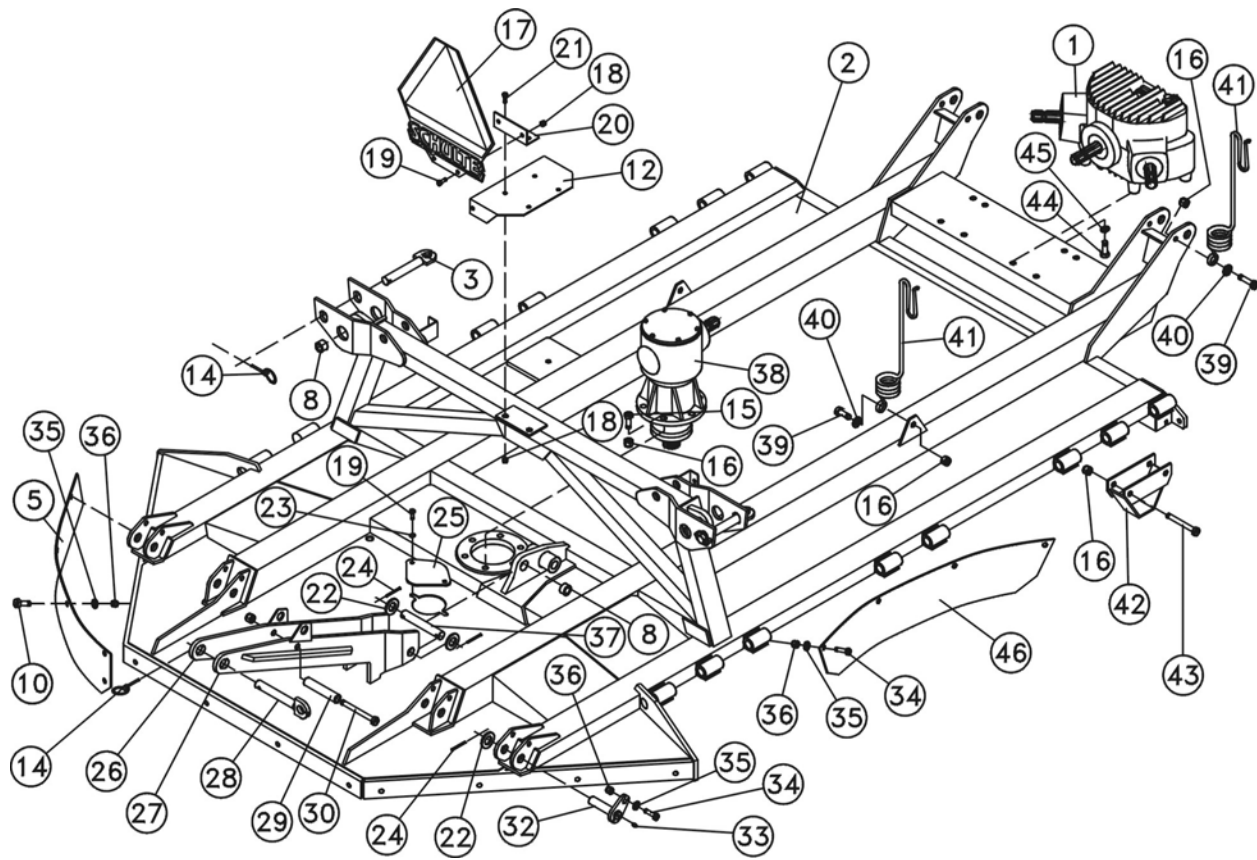
Schulte Industries Ltd ®
P.O. Box 70
Englefeld, Saskatchewan
Canada S0K 1N0
Phone: (306)-287-3715
Parts Fax: (306) 287-4066
Email: info@schulte.ca

SCHULTE®

TABLE OF CONTENTS

CENTER SECTION FRAME	3
WING FRAME, RIGHT	5
WING FRAME, LEFT	7
HITCH FRAME AND CENTER WHEEL STANDARD	9
LEFT WING WHEEL STANDARD	11
RIGHT WING WHEEL STANDARD	12
EQUAL ANGLE HITCH KIT (C502-800)	13
PRECISION HITCH (C000-300)	15
HITCH JACK, SIDE WIND 15", 7200 LBS (232-750)	16
HUB, AXLE, TIRE	17
BLADE CARRIERS	19
DRIVELINE SHIELDING	21
CHAIN GUARDS & RUBBER SHIELDS	23
CHAIN GUARDS & CABLE KITS	25
FIXED BLADE SHREDDING, UPDRAFT BLADES (C502-270)	27
FIXED BLADE SHREDDING, FLAT BLADES (C502-280)	28
FIXED BLADE SHREDDING KIT, SHROUDS	29
WING LIFT CIRCUIT	31
WING LIFT CYLINDER, Monarch (100-3092)	32
PHASING CIRCUIT	33
PHASING CYLINDERS, MONARCH	34
TRACTOR UNIVERSAL JOINT, SFT-S8 W/ 80° C.V. JOINT	35
CENTER & WING UNIVERSAL JOINT, BP SIZE 6	37
INNER WING UNIVERSAL JOINT, BP SIZE 8	39
SLIP CLUTCH, INNER WING	41
SLIP CLUTCH, CENTER & OUTER WING	42
TRACTOR SHAFT, NON-CV, WEASLER 55E	43
DIVIDER GEARBOX (330-921)	45
RIGHT ANGLE GEARBOX (330-830)	47
RIGHT ANGLE GEARBOX (330-831)	49
RIGHT ANGLE GEARBOX (330-832)	51
RIGHT ANGLE GEARBOX (330-833)	53
TRANSPORT KITS	55
Safety Chain (S000-010)	55
Transport Light Kit (S000-040)	55
PARTS INDEX	56

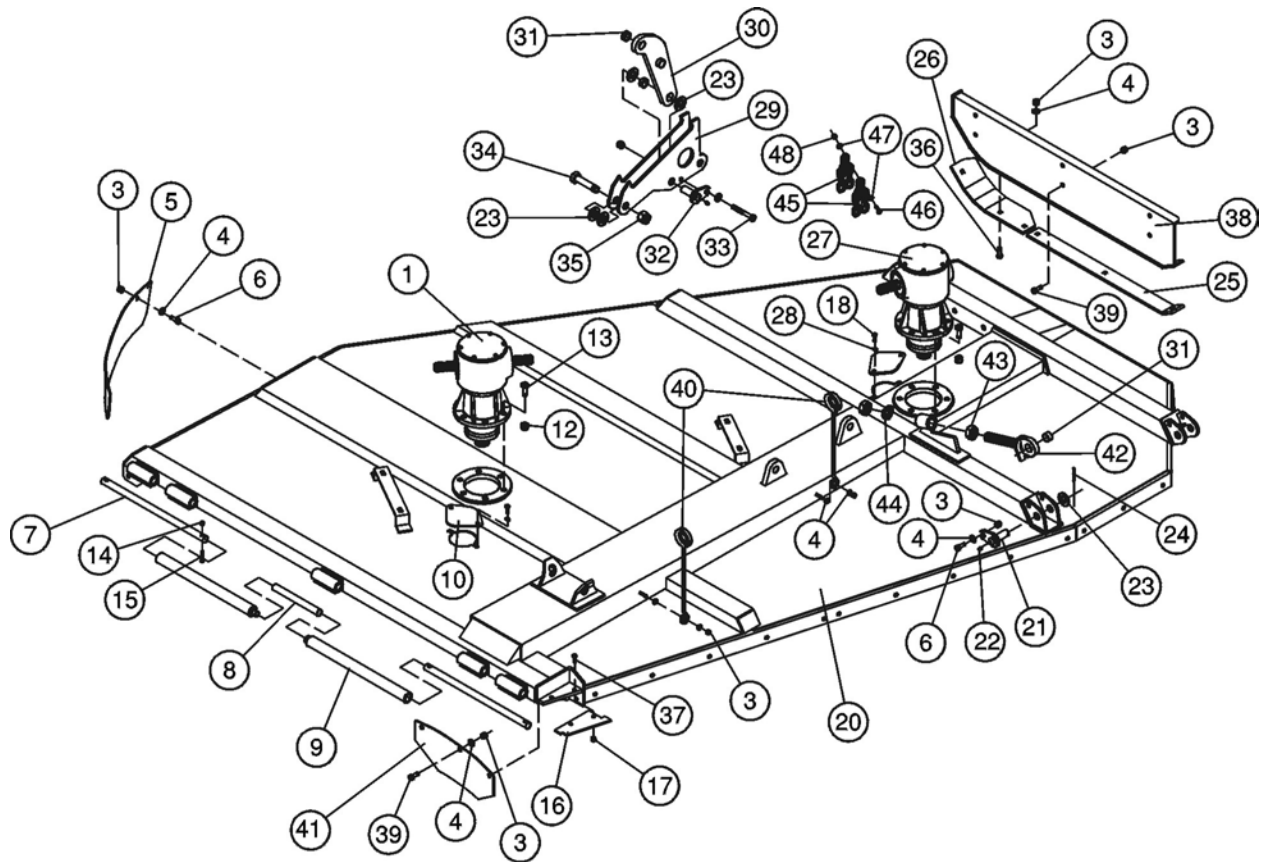
CENTER SECTION FRAME



CENTER SECTION FRAME

Ref.	Part No.	Description	Qty.
1	330-921	Divider gear box	1
2	C502-101	Center section assembly	1
3	C502-147	Transport lock pin, 1 x 7-9/16 U.L.	2
5	C502-334	Shroud, center rear left	1
	C502-335	Shroud, center rear right	1
8	362-010	Tension bushing, 1 x 1-1/4 x 3/4	3
10	250-061	Bolt, 1/2 x 1-1/4 UNC	12
12	C502-181	Hydraulic hose mounting bracket	1
14	300-012	Lynch pin, 1/4 standard	3
15	250-088	Bolt, 5/8 x 2-1/2, UNC	6
16	270-004	Lock nut, 5/8 UNC	13
17	150-32	Slow moving vehicle sign, complete	1
18	270-017	Lock nut, 3/8 UNC	4
19	250-018	Bolt, 3/8 x 1 UNC	4
20	C502-180	SMV mount bracket	1
21	250-019	Bolt, 3/8 x 1-1/4 UNC	2
22	256-001	Flat washer, 1	6
23	255-013	Lock washer, 3/8	2
24	262-006	Roll pin, 3/8 x 2	6
25	C310-115	Blade bolt access cover	1
26	C502-171	Transport lock bar, left	1
27	C502-172	Transport lock bar, right	1
28	C502-165	Transport pin, 1 x 6-5/16 U.L.	1
29	C502-173	Spacer, 5"	1
30	250-077	Bolt, 5/8 x 7 UNC	1
32	C502-145	Retainer pin, 1 x 3-3/8 U.L.	4
33	273-006	Grease nipple, self tap	4
34	250-059	Bolt, 1/2 x 1-1/2 UNC	12
35	256-011	Flat washer, 1/2	24
36	270-007	Lock nut, 1/2 UNC	24
37	C502-174	Lock up pivot pin, 1 x 5-5/16 U.L.	1
38	330-832	Right angle gear box	1
39	250-093	Bolt, 5/8 x 1-3/4 UNC	2
40	256-006	Flat washer, 5/8	2
41	228-012	Hose organizer	2
42	C502-139	Frame rest	2
43	250-084	Bolt, 5/8 x 4-1/2 UNC	4
44	250-095	Bolt, 5/8 x 1-1/2 UNC	4
45	255-005	Lock washer, 5/8	4
46	C502-303	Shroud	2

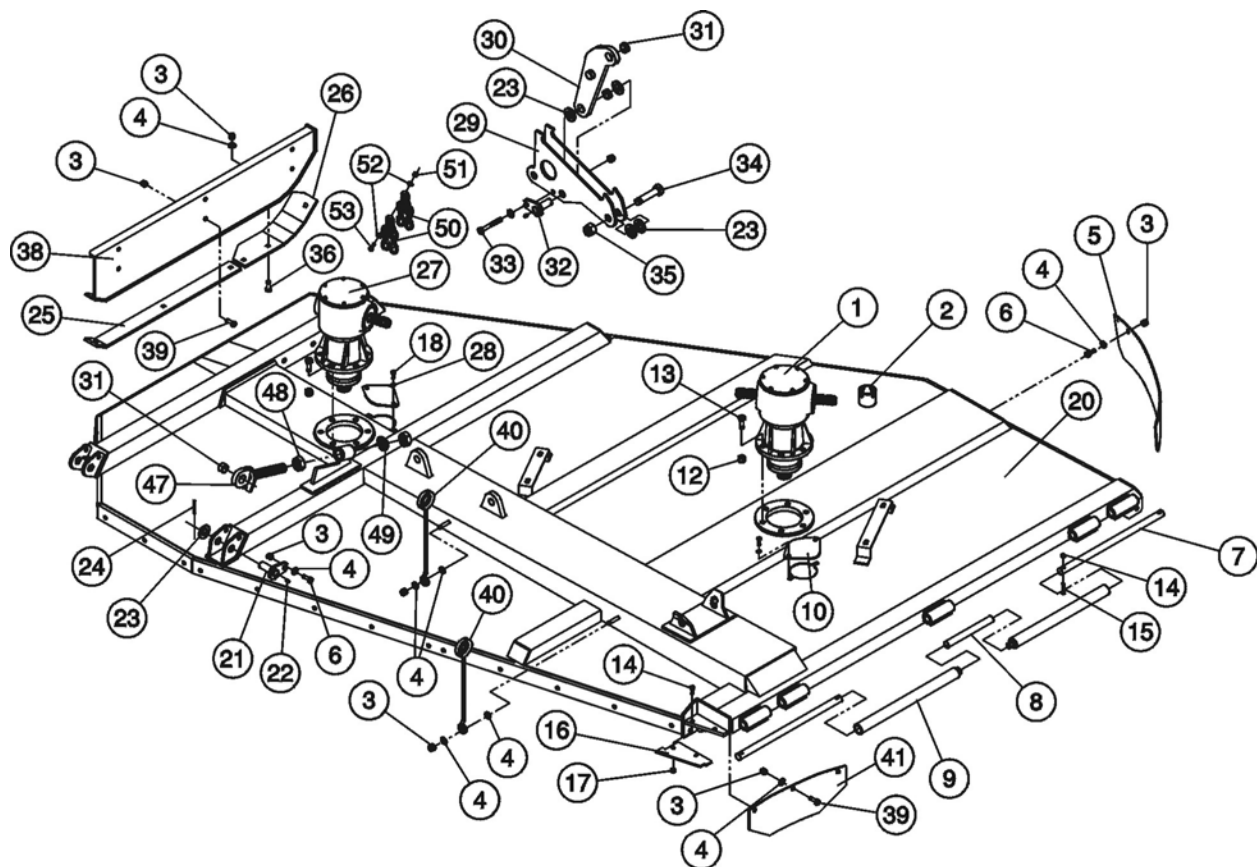
WING FRAME, RIGHT



WING FRAME, RIGHT

Ref.	Part No.	Description	Qty.
1	330-833	Right angle box, thru shaft	1
3	270-007	Lock nut, 1/2 UNC	20
4	256-011	Flat washer, 1/2	16
5	C502-315	Shroud	1
6	250-059	Bolt, 1/2 x 1-1/2, UNC	5
7	C502-140	Hinge pin, 1 x 22-27/32	2
8	C502-141	Hinge pin, 1 x 9	1
9	C502-142	Hinge spacer, 19-5/32	2
10	C310-115	Bolt access cover	2
12	270-004	Lock nut, 5/8 UNC	12
13	250-088	Bolt, 5/8 x 2-1/2 UNC	12
14	270-020	Lock nut, 5/16 UNC	4
15	250-005	Bolt, 5/16 x 1-1/2 UNC	4
16	C502-178	Wing filler plate	1
17	270-017	Lock nut, 3/8 UNC	2
18	250-018	Bolt, 3/8 x 1 UNC	4
20	C502-155	Right wing assembly	1
21	C502-145	Retaining pin, 1 x 3-3/8 U.L.	2
22	273-006	Grease nipple, self tap	3
23	256-001	Flat washer, 1	6
24	262-006	Roll pin, 3/8 x 2	2
25	C502-135	Wing skid, rear	1
26	C502-136	Wing skid, front, right	1
27	330-830	Gearbox, CCW	1
	330-831	Gearbox, CW	1
28	255-013	Lock washer, 3/8	4
29	C502-161	Floating lug mount plate	2
30	C502-160	Floating lug	1
31	362-010	Tension bushing, 1 x 1-1/4 x 3/4	2
32	CS01-133	Retaining pin	1
33	250-051	Bolt, 1/2 x 3 UNC	1
34	250-1241	Bolt, 1 x 3-1/4 UNC	2
35	270-002	Lock nut, 1 UNC	2
36	250-201	Plow bolt, 1/2 x 1-1/2 UNC	6
37	250-019	Bolt, 3/8 x 1-1/4 UNC	2
38	C502-158	Skid mount assembly, right	1
39	250-061	Bolt, 1/2 x 1-1/4 UNC	6
40	228-011	Hose organizer, 16"	2
41	C502-336	Shroud, inner rear hinge	1
42	C301-128	Wing adjustment assembly	1
43	257-054	Half nut, 1-1/4" UNC	2
44	255-020	Lock washer, 1-1/4"	1
45	225-109	9 link chain	2
46	250-026	Bolt, 3/8" x 2-1/2" UNC	1
47	256-017	Washer, 3/8" UNC	2
48	270-017	Locknut, 3/8" UNC	1

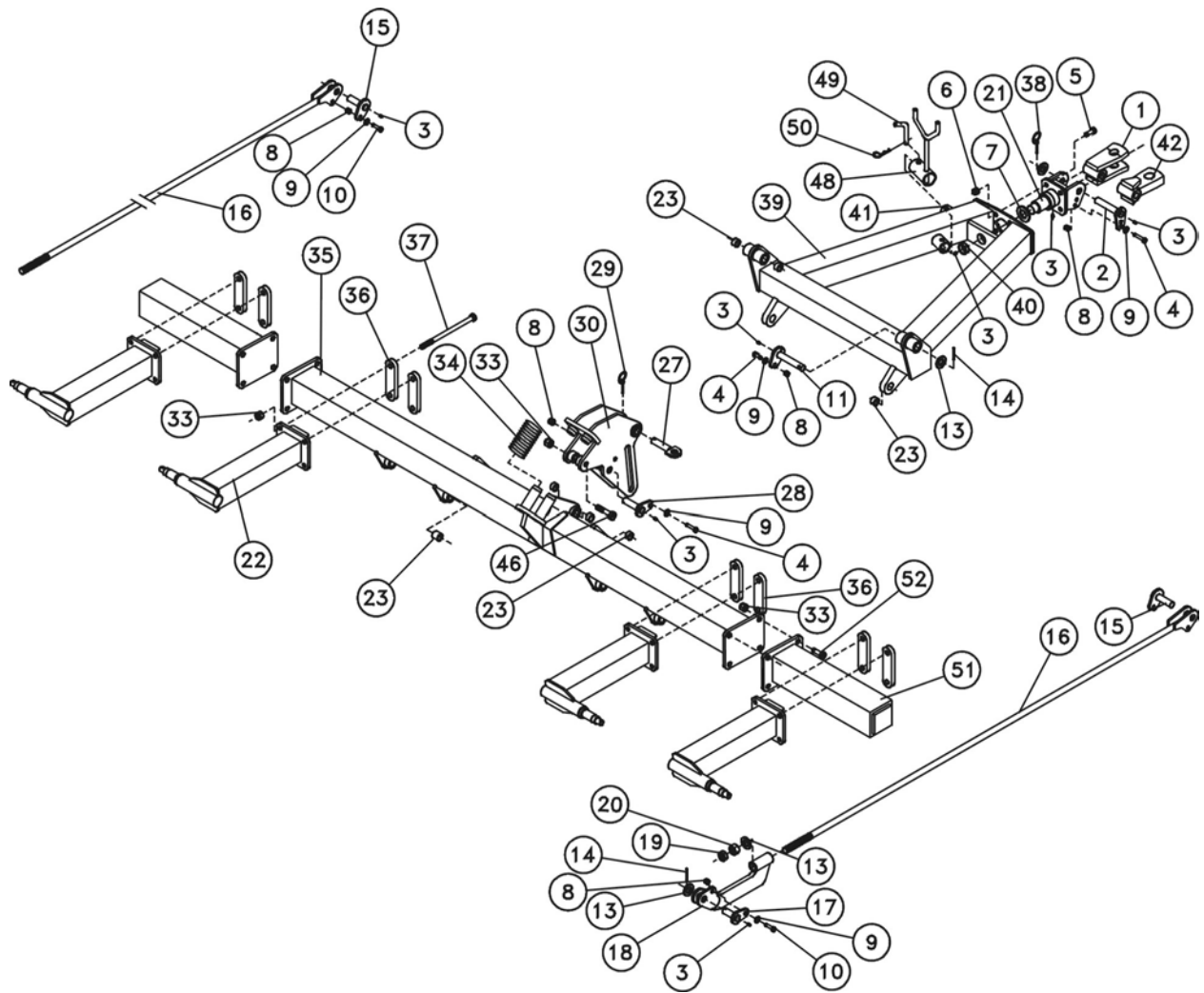
WING FRAME, LEFT



WING FRAME, LEFT

Ref.	Part No.	Description	Qty.
1	330-833	Right angle box, thru shaft	1
2	755-002	Jack weld on end	1
3	270-007	Lock nut, ½ UNC	20
4	256-011	Flat washer, ½	16
5	C502-315	Shroud	1
6	250-059	Bolt, ½ x 1-1/2, UNC	5
7	C502-140	Hinge pin, 1 x 22-27/32	2
8	C502-141	Hinge pin, 1 x 9	1
9	C502-142	Hinge spacer, 19-5/32	2
10	C310-115	Bolt access cover	2
12	270-004	Lock nut, 5/8 UNC	12
13	250-088	Bolt, 5/8 x 2-1/2 UNC	12
14	270-020	Lock nut, 5/16 UNC	4
15	250-005	Bolt, 5/16 x 1-1/2 UNC	4
16	C502-178	Wing filler plate	1
17	270-017	Lock nut, 3/8 UNC	2
18	250-018	Bolt, 3/8 x 1 UNC	4
20	C502-150	Left wing assembly	1
21	C502-145	Retaining pin, 1 x 3-3/8 U.L.	2
22	273-006	Grease nipple, self tap	3
23	256-001	Flat washer, 1	6
24	262-006	Roll pin, 3/8 x 2	2
25	C502-135	Wing skid, rear	1
26	C502-137	Wing skid, front, left	1
27	330-831	Gearbox, CW	1
	330-830	Gearbox, CCW	1
28	255-013	Lock washer, 3/8	4
29	C502-161	Floating lug mount plate	2
30	C502-160	Floating lug	1
31	362-010	Tension bushing, 1 x 1-1/4 x 3/4	2
32	CS01-133	Retaining pin	1
33	250-051	Bolt, ½ x 3 UNC	1
34	250-1241	Bolt, 1 x 3-1/4 UNC	2
35	270-002	Lock nut, 1 UNC	2
36	250-201	Plow bolt, ½ x 1-1/2 UNC	6
37	250-019	Bolt, 3/8 x 1-1/4 UNC	2
38	C502-154	Skid mount assembly, left	1
39	250-061	Bolt, ½ x 1-1/4 UNC	6
40	228-011	Hose organizer, 16"	2
41	C502-337	Shroud, inner rear hinge	1
47	C301-128	Wing adjustment assembly	1
48	257-054	Half nut, 1-1/4" UNC	2
49	255-020	Lock washer, 1-1/4"	1
50	225-109	9 link chain	2
51	270-017	Locknut, 3/8" UNC	1
52	256-017	Washer, 3/8"	2
53	256-026	Bolt, 3/8" x 2-1/2" UNC	1

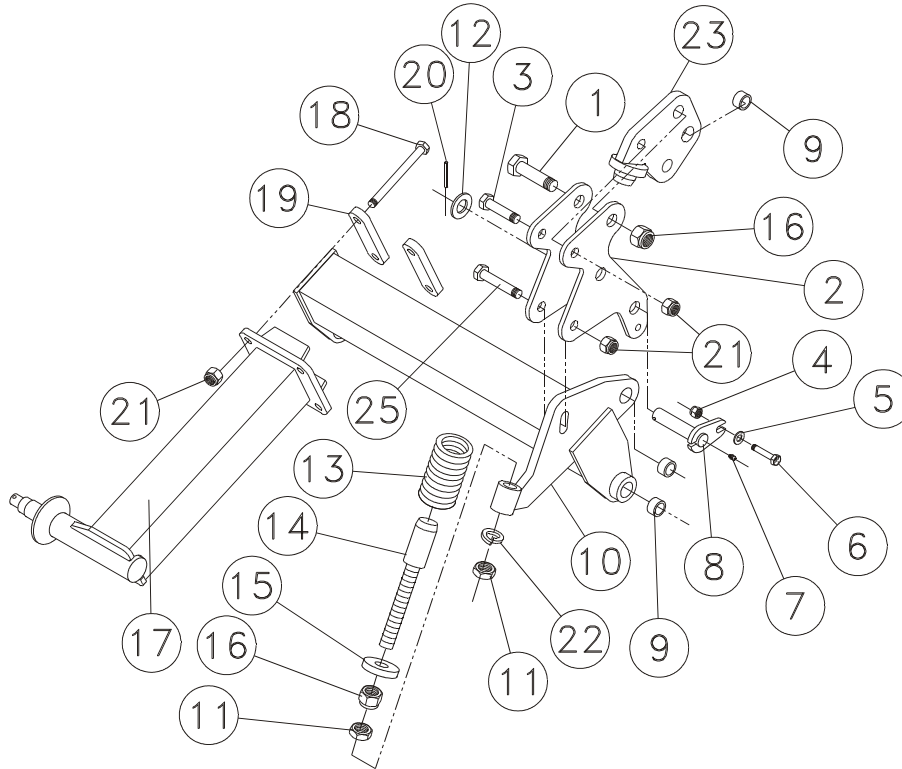
HITCH FRAME AND CENTER WHEEL STANDARD



HITCH FRAME AND CENTER WHEEL STANDARD

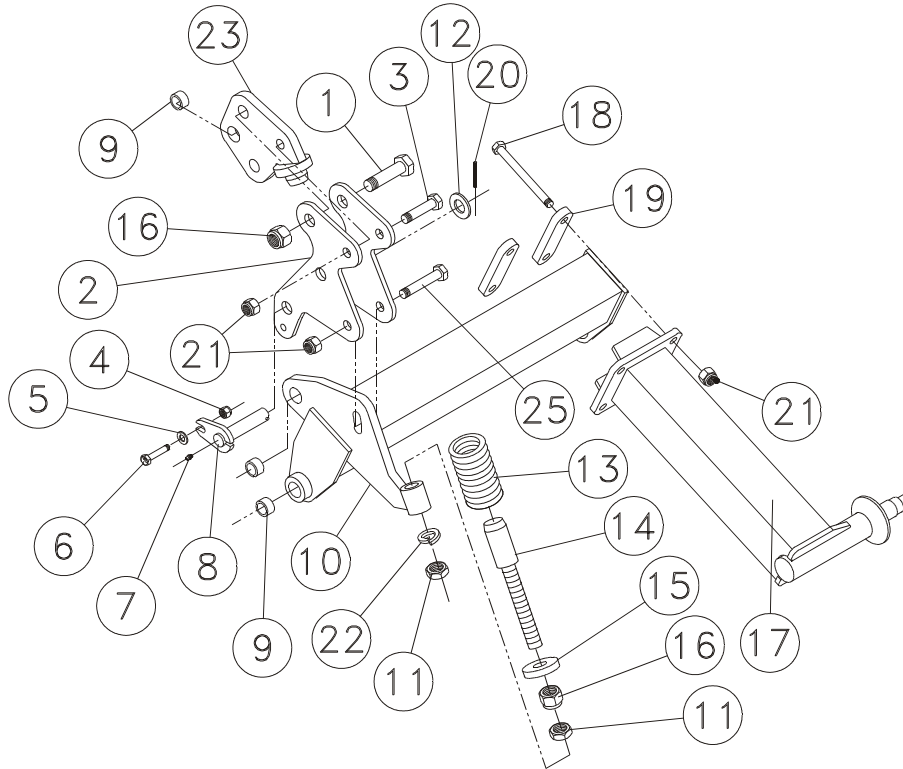
Ref.	Part No.	Description	Qty.
1	C502-107	Hitch clevis	1
	C502-815	Open Clevis, 2-3/16" Opening, 1-1/16" Pin	1
2	C502-109	Retaining pin, 1 x 4-5/8 U.L.	1
3	273-006	Grease nipple, self tap	10
4	250-060	Bolt, 1/2 x 1-3/4 UNC	3
5	250-093	Bolt, 5/8 x 1-3/4 UNC	4
6	270-004	Lock nut, 5/8 UNC	4
7	256-055	Machine bushing 1-1/2 x 2-1/4 x 10ga	1
8	270-007	Lock nut, 1/2 UNC	8
9	256-011	Flat washer, 1/2	9
10	250-059	Bolt, 1/2 x 1-1/2 UNC	4
11	C502-146	Retaining pin, 1 x 5 U.L.	2
13	256-001	Flat washer, 1	8
14	262-006	Roll pin, 3/8 x 2	6
15	CS01-133	Retaining pin	2
16	C502-130	Lift rod	2
17	CS01-138	Retaining pin, 1 x 1-3/4 U.L.	2
18	CS01-130	Lift rod lug	2
19	257-006	Half nut, 1 UNC	2
20	257-008	Nut, 1 UNC	2
21	CS01-109	Swivel hitch assembly	1
22	C502-114	Center wheel standard, single arm	4
23	362-010	Tension bushing, 1 x 1-1/4 x 3/4	19
27	C502-165	Transport pin, 1 x 6-5/16 U.L.	1
28	C320-142	Retaining pin, 1 x 4-3/16 U.L.	1
29	300-012	Lynch pin, 1/4	1
30	C502-196	Spring mount assembly	1
33	270-001	Lock nut, 3/4 UNC	25
34	229-008	Compression spring	2
35	C502-195	Mounting beam	1
36	C502-128	Bolt plate	4
37	250-105	Bolt, 3/4 x 7-1/2 UNC	16
38	300-010	Lynch pin, 7/16	1
39	C502-110	Hitch frame	1
40	362-012	Tension bushing, 1-1/2 x 1-3/4 x 3/4	1
41	739-007	Jack weld on end	1
42	C502-113	Solid tongue	1
46	250-109	Bolt, 3/4 x 5-1/2 UNC	1
48	C502-183	PTO storage support	1
49	302-034	Bent hitch pin	1
50	271-053	#10 Hitch pin clip	1
51	C502-613	Stub 5 x 5 x 25 long	2
52	250-115	Bolt, 3/4 x 2 UNC	8

LEFT WING WHEEL STANDARD



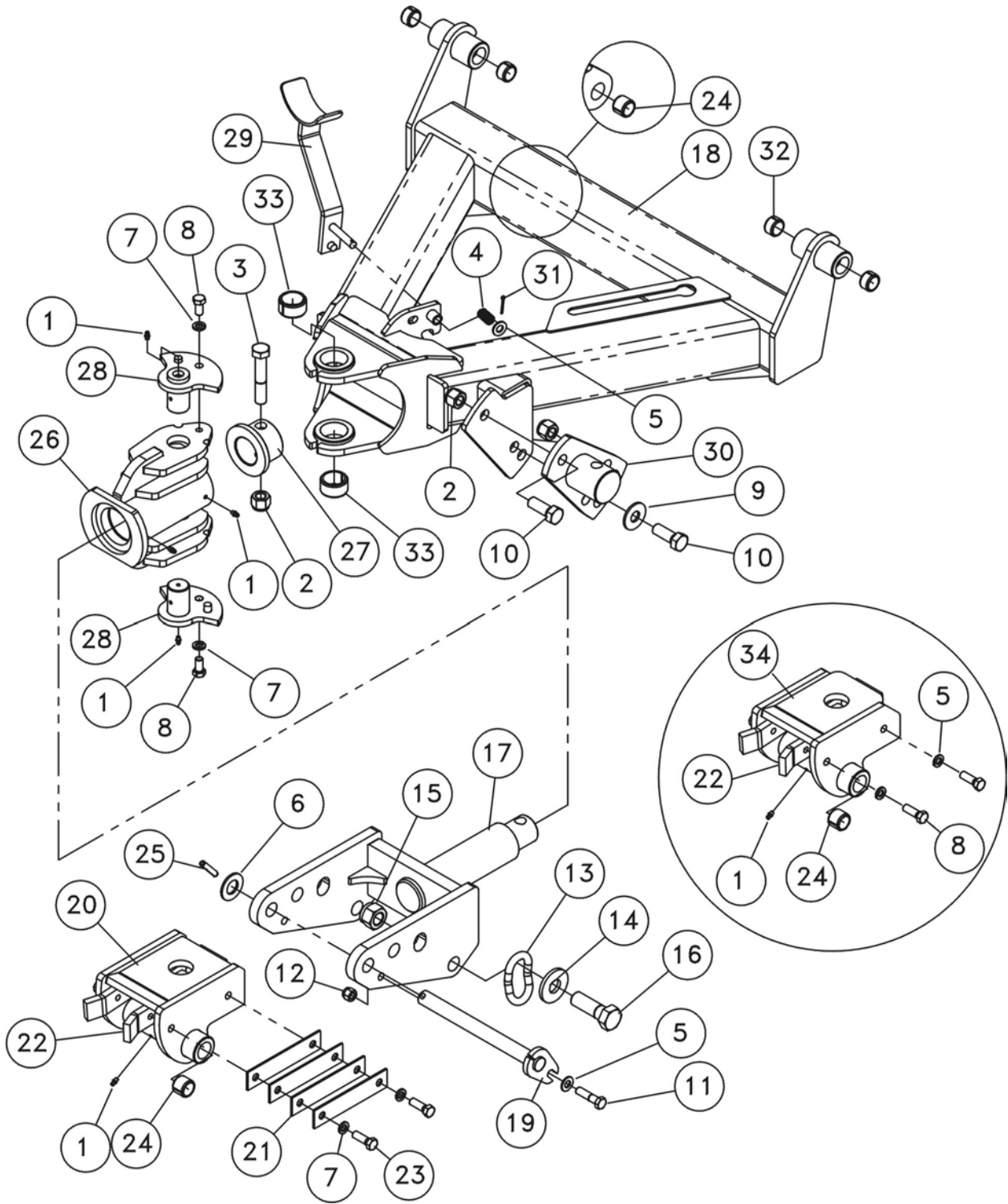
Ref.	Part No.	Description	Qty.
1	250-126	Bolt, 1 x 2-3/4 UNC	2
2	C502-187	Linkage side plate	2
3	250-114	Bolt, 3/4 x 2-1/2 UNC	1
4	270-007	Lock nut, 1/2 UNC	1
5	256-011	Flat washer, 1/2	1
6	250-051	Bolt, 1/2 x 3 UNC	1
7	273-006	Grease nipple, self tap	1
8	CS01-138	Retaining pin, 1 x 1-3/4 U.L.	1
9	362-010	Tension bushing, 1 x 1-1/4 x 3/4	6
10	C502-126	Wheel beam, left wing	1
11	257-006	Half nut, 1 UNC	2
12	256-001	Flat washer 1	1
13	229-008	Compression spring, .56 wire	1
14	C502-132	Spring mount, 1 UNC	1
15	C502-133	Spacer, 1/2	1
16	270-002	Lock nut, 1 UNC	3
17	C502-125	Wheel standard	1
18	250-106	Bolt, 3/4 x 6-1/2 UNC	4
19	C320-128	Wheel standard mount plate	2
20	262-006	Roll pin, 3/8 x 2	1
21	270-001	Lock nut, 3/4 UNC	6
22	255-001	Lock washer, 1"	1
23	C502-184	Cylinder lug mount plate	1
25	250-112	Bolt, 3/4 x 3 UNC	1

RIGHT WING WHEEL STANDARD



Ref.	Part No.	Description	Qty.
1	250-126	Bolt, 1 x 2-3/4 UNC	2
2	C502-187	Linkage side plate	2
3	250-114	Bolt, 3/4 x 2-1/2 UNC	1
4	270-007	Lock nut, 1/2 UNC	1
5	256-011	Flat washer, 1/2	1
6	250-051	Bolt, 1/2 x 3 UNC	1
7	273-006	Grease nipple, self tap	1
8	CS01-138	Retaining pin, 1 x 1-3/4 U.L.	1
9	362-010	Tension bushing, 1 x 1-1/4 x 3/4	6
10	C502-182	Wheel beam, right wing	1
11	257-006	Half nut, 1 UNC	2
12	256-001	Flat washer 1	1
13	229-008	Compression spring, .56 wire	1
14	C502-132	Spring mount, 1 UNC	1
15	C502-133	Spacer, 1/2	1
16	270-002	Lock nut, 1 UNC	3
17	C502-125	Wheel standard	1
18	250-106	Bolt, 3/4 x 6-1/2 UNC	4
19	C320-128	Wheel standard mount plate	2
20	262-006	Roll pin, 3/8 x 2	1
21	270-001	Lock nut, 3/4 UNC	6
22	255-001	Lock washer, 1"	1
23	C502-184	Cylinder lug mount plate	1
25	250-112	Bolt, 3/4 x 3 UNC	1

EQUAL ANGLE HITCH KIT (C502-800)

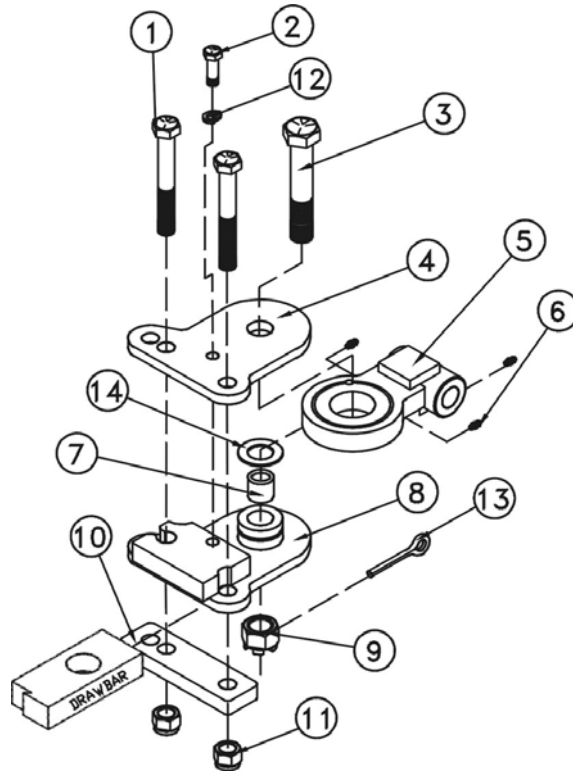


EQUAL ANGLE HITCH KIT (C502-800)

Ref.	Part No.	Description	Qty.
1	273-006	Grease nipple, 1/4-28 self tap	5
2	270-001	Locknut, 3/4" UNC	3
3	250-111	Bolt, 3/4" x 4" UNC	1
4	229-010	Compression spring, 0.72" OD x 1.5" LG	1
5	256-011	Washer, 1/2"	2
6	256-001	Washer, 1" SAE	1
7	255-009	Lock washer, 1/2"	6
8	250-063	Bolt, 1/2" x 1" UNC	2
9	256-003	Washer, 3/4"	1
10	250-115	Bolt, 3/4" x 2" UNC	2
11	250-057	Bolt, 1/2" x 2" UNC	1
12	270-007	Locknut, 1/2" UNC	1
13	S000-010	Safety Chain <i>*attachment link shown only</i>	1
14	256-0011	Washer, 1" x 1/4" Thick	1
15	270-002	Locknut, 1" UNC	1
16	250-125	Bolt, 1" x 3" UNC	1
17	C502-804	Swivel Yoke	1
18	C502-801	A-Frame	1
19	C502-808	Pin, 1" dia	1
20	C502-805	Hitch Block, Cat 3 & 4	1
21	C301-189	Spacer, 10 ga.	8
22	C301-186	Spacer plate	2
23	250-059	Bolt, 1/2" x 1-1/2" UNC	4
24	362-015	Tension Bushing, 1" x 1-1/4" x 1" lg	4
25	262-006	Roll Pin, 3/8" x 2"	1
26	C502-802	Hitch Swivel	1
27	C502-809	Retainer	1
28	C502-807	Pin, 1-1/2" dia, locking	2
29	C000-132	Stand	1
30	C520-117	Jack Mount, adjustable	1
31	271-008	Cotter Pin, 1/8" x 1"	1
32	362-010	Tension Bushing, 1" x 1-1/4" x 3/4" lg	4
33	362-021	Tension Bushing, 1-1/2" x 1-7/8" x 1" lg	2
34	C502-817	Hitch Block, Wide, Cat 4	1

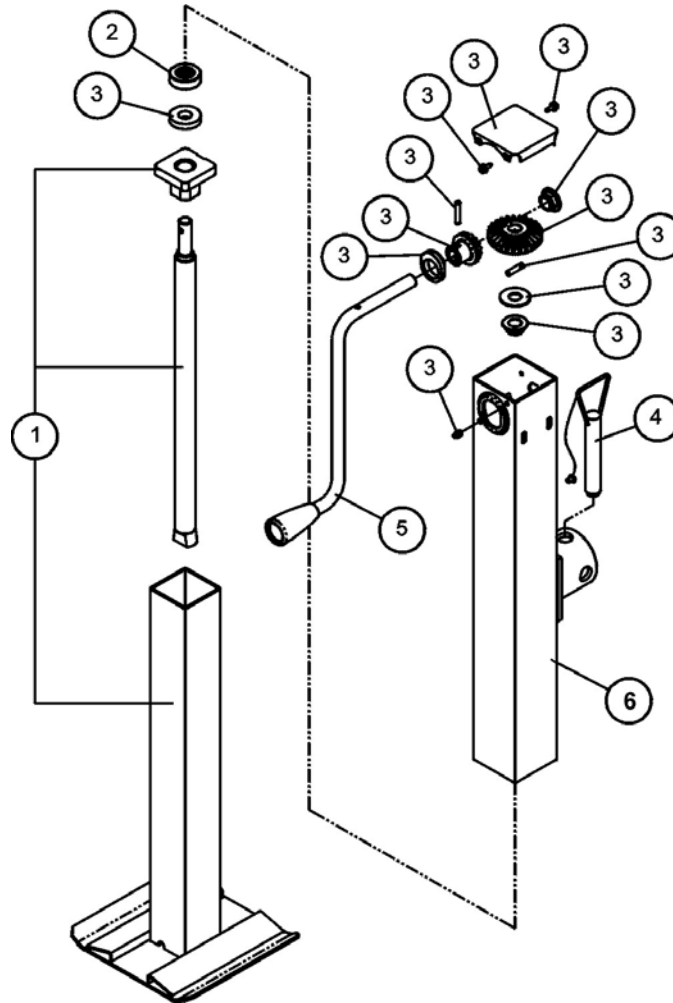
NOTE: Hitch Block C502-817 is used in place of C502-805 for extra wide Drawbars.

PRECISION HITCH (C000-300)



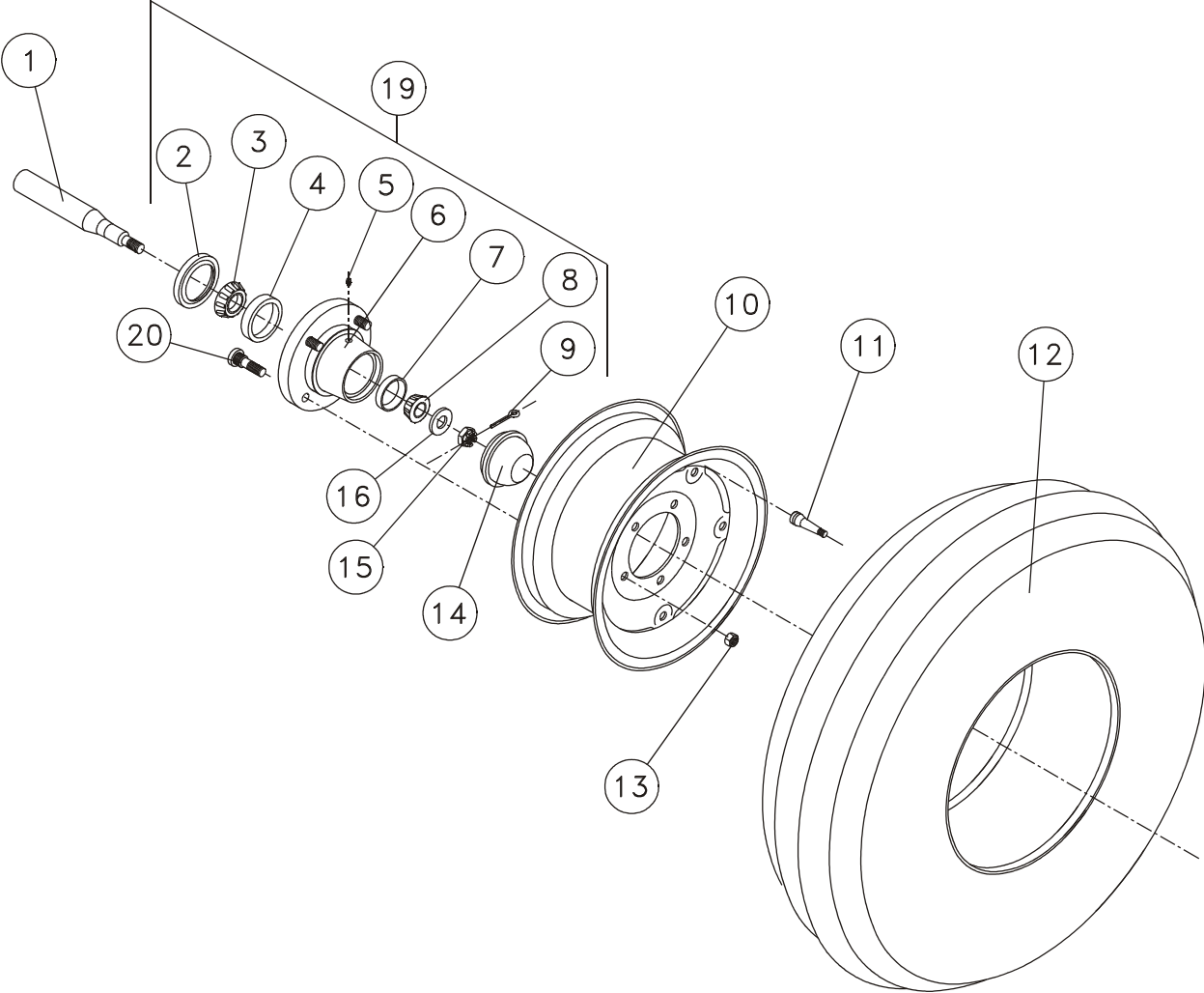
Ref.	Part No.	Description	Qty.
1	250-109	Bolt, 3/4 x 5-1/2 UNC	2
2	250-059	Bolt, 1/2 x 1-1/2 UNC	1
3	C000-202	Bolt, 1-1/8 x 5-1/2 UNF	1
4	C000-303	Drawbar clevis top	1
5	C000-301	Hitch tongue	1
6	273-001	Grease nipple, 1/8 NPT	3
7	C000-305	Spacer	1
8	C000-302	Draw bar clevis base	1
9	257-003	Lock nut, 1-1/8 UNF	1
10	C000-304	Clamp bar	1
11	270-001	Lock nut, 3/4 UNC	2
12	255-009	Lock washer, 1/2	1
13	271-011	Cotter pin, 1/4 x 2-1/2	1
14	256-0712	Machine Bushing Spacer (Only required if Hitch Tongue is tight)	1

HITCH JACK, SIDE WIND 15", 7200 LBS (232-750)



Ref.	Part No.	Description	Qty.
1	232-751	Inner tube, screw and nut assembly	1
2	232-752	Thrust bearing	1
3	232-753	Final assembly kit. <i>Also incl ref # 2</i>	1
4	232-754	Pull pin assembly, 3/4"	1
5	232-755	Crank assembly	1
6	232-757	Outer Tube and Mount	1

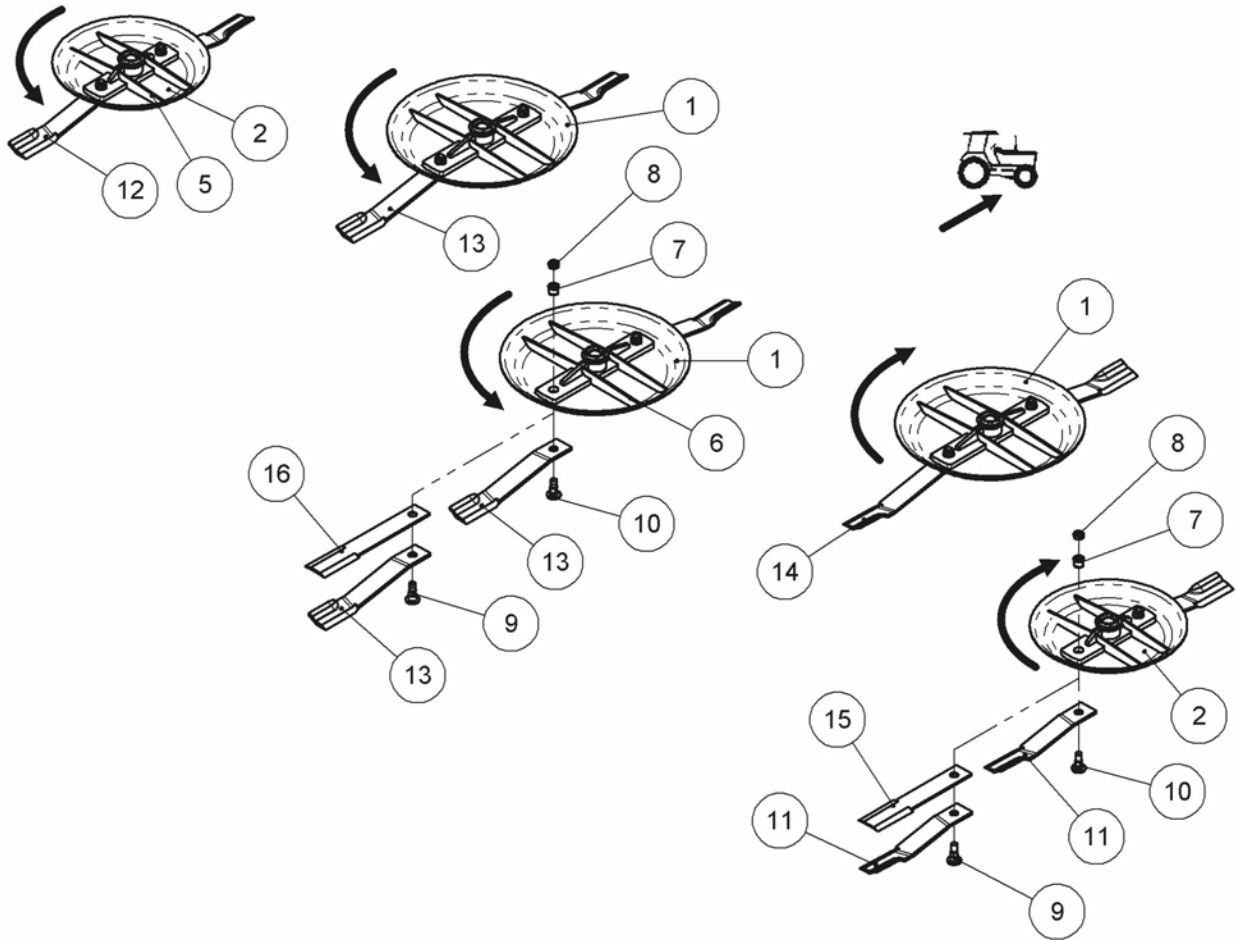
HUB, AXLE, TIRE



HUB, AXLE, TIRE

Ref.	Part No.	Description	Qty.
1	208-021	Spindle, 2 x 13	2
2	207-021	Seal	1
3	207-015	Bearing, inner	1
4	207-016	Race	1
5	273-006	Grease nipple, self-tap	1
6	204-003	Hub, casting only	1
6	205-004	Hub c/w outer races & wheel bolts Incl. #6,#7,#4,#20	1
7	207-020	Race	1
8	207-019	Bearing, outer	1
9	271-005	Cotter pin, 3/16 x 1-1/2	1
10	201-005	Wheel, 15 x 6 x 5	1
11	211-002	Valve stem, tubeless	1
12	210-163	Tire, 7.60 x 15, 8 ply	1
	210-167	Tire, 7.00 x 15, 8 ply, light truck	1
13	207-023	Wheel nut, 1/2 UNF	5
14	207-022	Dust cap	1
15	209-004	Castle nut	1
16	209-003	Washer	1
19	206-004	Complete hub assembly. includes #2-#9 & #14-#16 & #20	1
20	207-043	Wheel bolt, 1/2 UNF	5
21	207-054	Wheel bearing kit	1

BLADE CARRIERS



BLADE CARRIERS

Ref.	Part No.	Description	Qty.
1	C000-112	Blade carrier complete, center & inner wing	3
	520-1076	Pan only	3
2	C000-111	Blade carrier complete, outer wing	2
	520-1075	Pan only	2
5	586-822	Pan Reinforcements, wing outer	8
6	586-823	Pan Reinforcements, wing inner & center	12
7	251-020	Bushing, Pentagon Style	10
8	257-003	Lock nut, 1-1/8-12 UNF	10
9	251-019	Blade bolt, shredder blade	10
	251-203	Blade bolt & nut, shredder blade	
10	251-018	Blade bolt, 1-1/8"-12 UNF	10
	251-201	Blade bolt & nut	
11	401-026*	Blade, 1/2 x 4 x 25, CW, right wing, outer	
		Super Suction	2
12	401-027*	Blade, 1/2 x 4 x 25, CCW, left wing, outer	
		Super Suction	2
13	401-028*	Blade, 1/2 x 4 x 28, CCW	
		center & left wing inner, Super Suction	4
14	401-032*	Blade, 1/2 x 4 x 28, CW, right wing inner	
		Super Suction	2
15	401-033	Blade, 3/8 x 4 x 25, wing outer	4
16	401-034	Blade, 3/8 x 4 x 28, center & wing inner	6

Above updraft blades have 19° scarf angle, 1/8 scarf edge

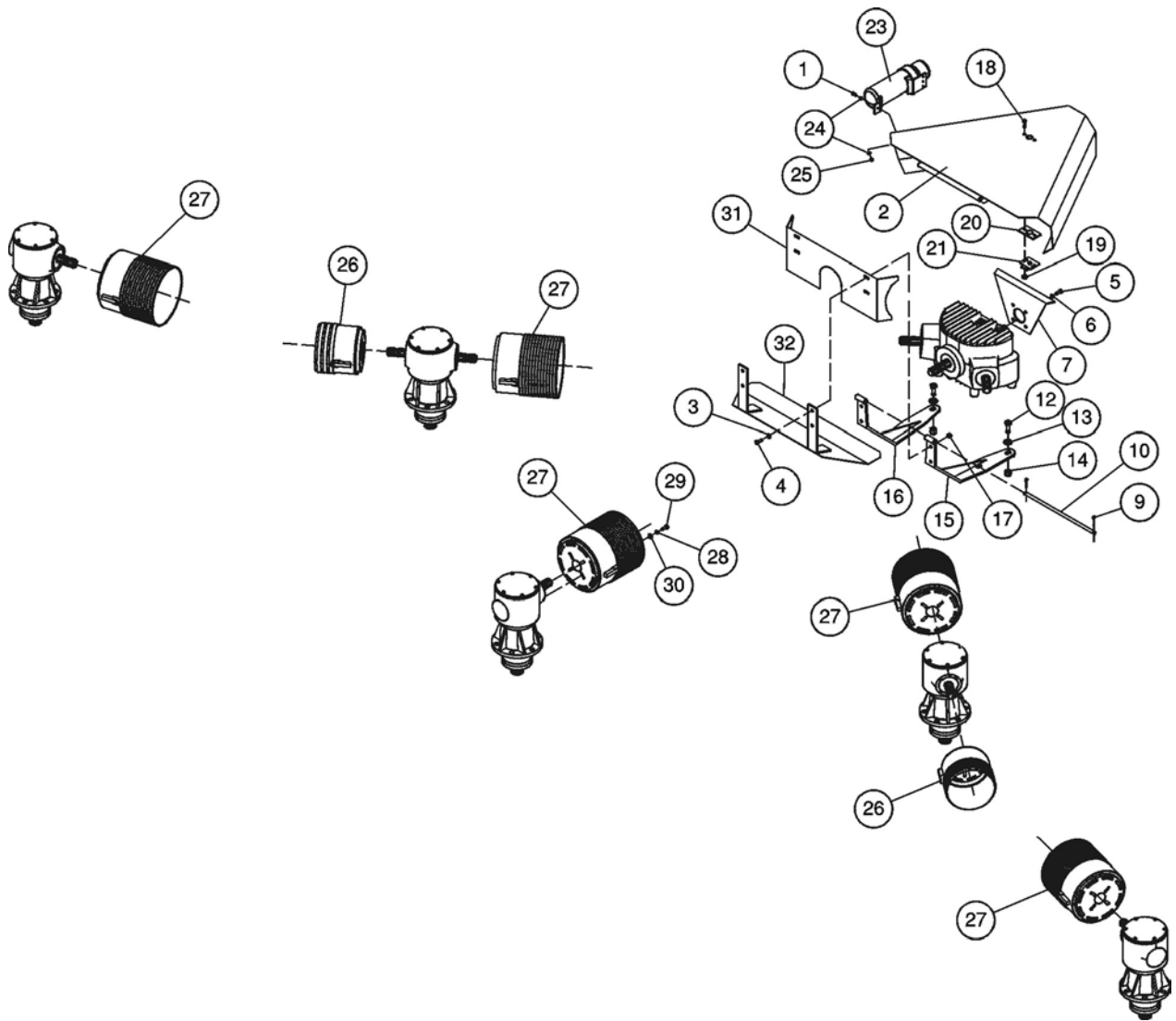
Optional Updraft Blades

Ref.	Part No.	Description	Qty.
11	401-046*	Blade, 1/2 x 4 x 25, CW, right wing, outer	2
12	401-047*	Blade, 1/2 x 4 x 25, CCW, left wing, outer	2
13	401-048*	Blade, 1/2 x 4 x 28, CCW	
		center & left wing inner	4
14	401-052*	Blade, 1/2 x 4 x 28, CW, right wing inner	2

Above blades have 19° scarf angle, 1/8 scarf edge

***MACHINES WITH NON-STANDARD (INBOARD)
BLADE ROTATION WILL HAVE THE WING BLADE
SETS REVERSED.**

DRIVELINE SHIELDING

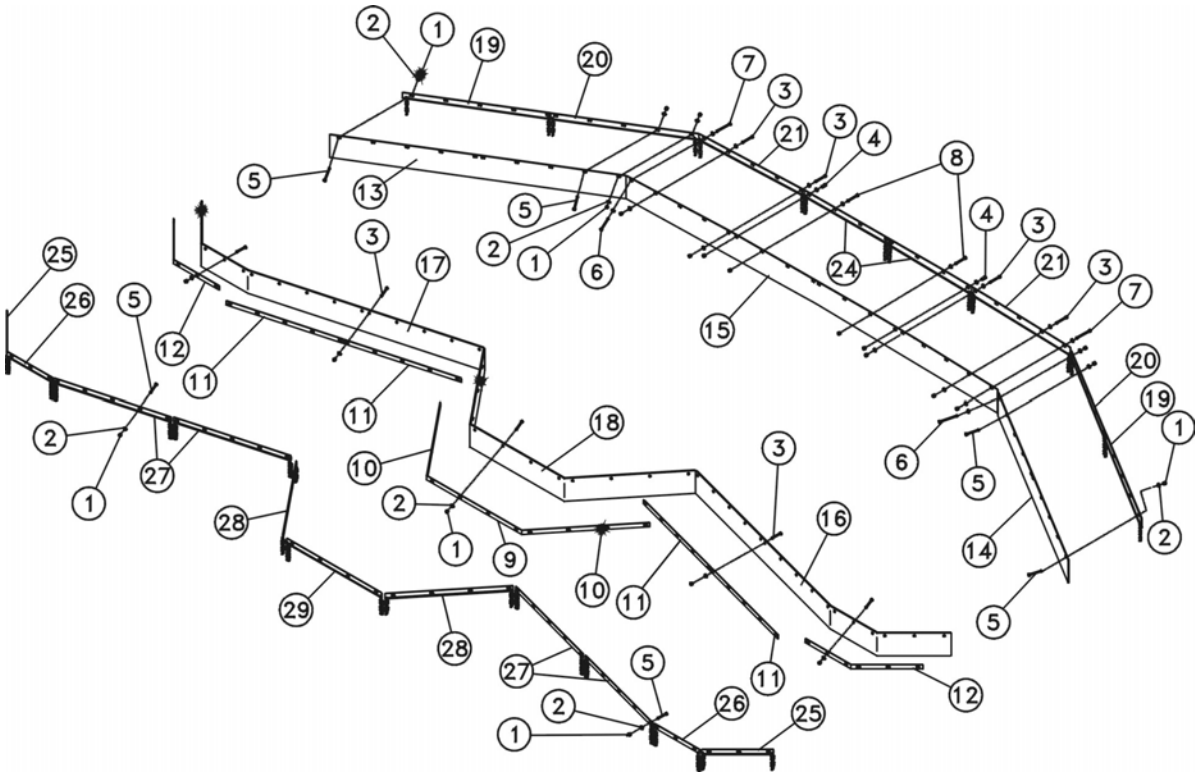


DRIVELINE SHIELDING

Ref.	Part No.	Description	Qty.
1	250-001	Bolt, 1/4 x 1, UNC	2
2	C502-236	Splitter box shield, CE Latch	1
3	256-017	Flat washer, 3/8	4
4	250-020	Bolt, 3/8 x 1-1/2" UNC	4
5	250-018	Bolt, 3/8 x 1 UNC	4
6	255-013	Lock washer, 3/8	4
7	C502-234	Splitter CE Latch Lock Plate	1
9	271-008	Cotter pin, 1/8 X 1	2
10	C502-226	Hinge pin, 18-1/4 U.L.	1
12	250-093	Bolt, 5/8 x 1-3/4 UNC	4
13	256-006	Flat washer, 5/8	4
14	270-004	Lock nut, 5/8 UNC	4
15	C502-220	Splitter shield mount, right	1
16	C502-219	Splitter shield mount, left	1
17	270-017	Lock nut, 3/8 UNC	4
18	251-151	Machine Screw, 10-24 x 3/4"	2
19	257-111	Locknut, 10-24 Serrated Flange	2
20	C314-205	CE Shield Spacer	1
21	227-001	Latch, 6 mm Allen Head	1
23	280-201	Manual Canister	1
24	256-018	Washer, 1/4"	4
25	270-025	Locknut, 1/4" UNC	2
26	341-6245	Bell Shield	2
27	341-6235	Bell Shield, Slip Clutch	5
28	255-015	Lock Washer, 5/16"	28
29	251-0081	Bolt, M8 x 25mm	28
30	256-020	Flat Washer, 5/16"	28
31	C502-206	Splitter Shield, Rear	1
32	C502-201	Splitter Shield, Bottom	1

CHAIN GUARDS & RUBBER SHIELDS

Front & Rear Single Chain Guards w/ Front Rubber Shields (C502-420)
Single Front Chain Guards w/ Front & Rear Rubber Shields (C502-430)



CHAIN GUARDS & RUBBER SHIELDS

Front & Rear Single Chain Guards w/ Front Rubber Shields (C502-420)

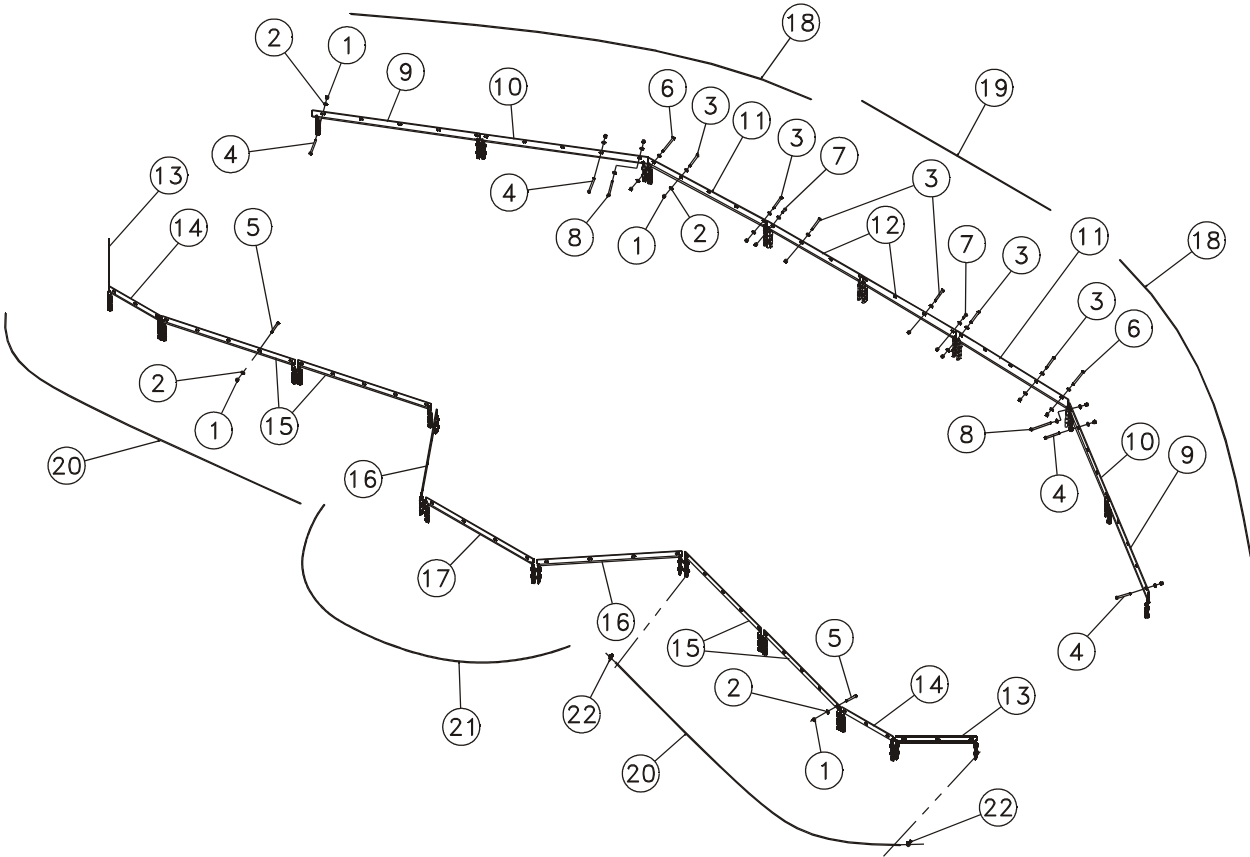
Ref.	Part No.	Description	Qty.
1	270-007	Locknut, 1/2 UNC	82
2	256-011	Washer, 1/2	94
3	250-048	Bolt, 1/2 x 4 UNC	8
4	250-060	Bolt, 1/2 x 1-3/4 UNC	2
5	250-053	Bolt, 1/2 x 3-3/4 UNC	62
6	250-070	Bolt, 1/2 x 5 1/2 UNC	2
7	250-0453	Bolt, 1/2 x 6 UNC, GR5, plated	2
8	250-047	Bolt, 1/2 x 4-1/2 UNC	6
13	C502-422	Rubber shield, left wing front	1
14	C502-423	Rubber shield, right wing front	1
15	C502-421	Rubber shield, center front	1
19	C502-503	Chain guard single, wing front outer	2
20	C502-502	Chain guard single, wing front middle	2
21	C502-501	Chain guard single, wing front inner	2
24	C502-504	Chain guard single, center front	2
25	C502-505	Chain guard single, wing rear outer	2
26	C502-506	Chain guard single, wing rear middle	2
27	C502-507	Chain guard single, wing rear inner	4
28	C502-508	Chain guard single, center rear outer	2
29	C502-509	Chain guard single, center rear middle	1

Single Front Chain Guards w/ Front & Rear Rubber Shields (C502-430)

Ref.	Part No.	Description	Qty.
1	270-007	Locknut, 1/2 UNC	82
2	256-011	Washer, 1/2	94
3	250-048	Bolt, 1/2 x 4 UNC	52
4	250-060	Bolt, 1/2 x 1-3/4 UNC	2
5	250-053	Bolt, 1/2 x 3-3/4 UNC	18
6	250-070	Bolt, 1/2 x 5 1/2 UNC	2
7	250-0453	Bolt, 1/2 x 6 UNC, GR5, plated	2
8	250-047	Bolt, 1/2 x 4-1/2 UNC	6
9	C502-412	Retaining bar, center rear middle	1
10	C502-413	Retaining bar, center rear outer	2
11	C502-416	Retaining bar, wing rear inner	4
12	C502-417	Retaining bar, wing rear outer	2
13	C502-422	Rubber shield, left wing front	1
14	C502-423	Rubber shield, right wing front	1
15	C502-421	Rubber shield, center front	1
16	C502-432	Rubber shield, right wing rear	1
17	C502-433	Rubber shield, left wing rear	1
18	C502-431	Rubber shield, center rear	1
19	C502-503	Chain guard single, wing front outer	2
20	C502-502	Chain guard single, wing front middle	2
21	C502-501	Chain guard single, wing front inner	2
24	C502-504	Chain guard single, center front	2

CHAIN GUARDS & CABLE KITS

Single Chain Guards (C502-500)
Double Chain Guards (C502-550)
Cable Kit for Double Chain Guards (C502-570)



CHAIN GUARDS & CABLE KITS

Single Chain Guards (C502-500)

Ref.	Part No.	Description	Qty.
1	270-007	Lock nut, 1/2" UNC	82
2	256-011	Flat washer, 1/2	94
3	250-048	Bolt, 1/2 x 4 UNC	14
4	250-050	Bolt, 1/2 x 3-1/2 UNC	18
5	250-053	Bolt, 1/2 x 3-3/4 UNC	44
6	250-070	Bolt, 1/2 x 5-1/2 UNC	2
7	250-059	Bolt, 1/2 x 1-1/2 UNC	2
8	250-046	Bolt, 1/2 x 5 UNC	2
9	C502-503	Chain guard single, wing front outer	2
10	C502-502	Chain guard single, wing front middle	2
11	C502-501	Chain guard single, wing front inner	2
12	C502-504	Chain guard single, center front	2
13	C502-505	Chain guard single, wing rear outer	2
14	C502-506	Chain guard single, wing rear middle	2
15	C502-507	Chain guard single, wing rear inner	4
16	C502-508	Chain guard single, center rear outer	2
17	C502-509	Chain guard single, center rear middle	1

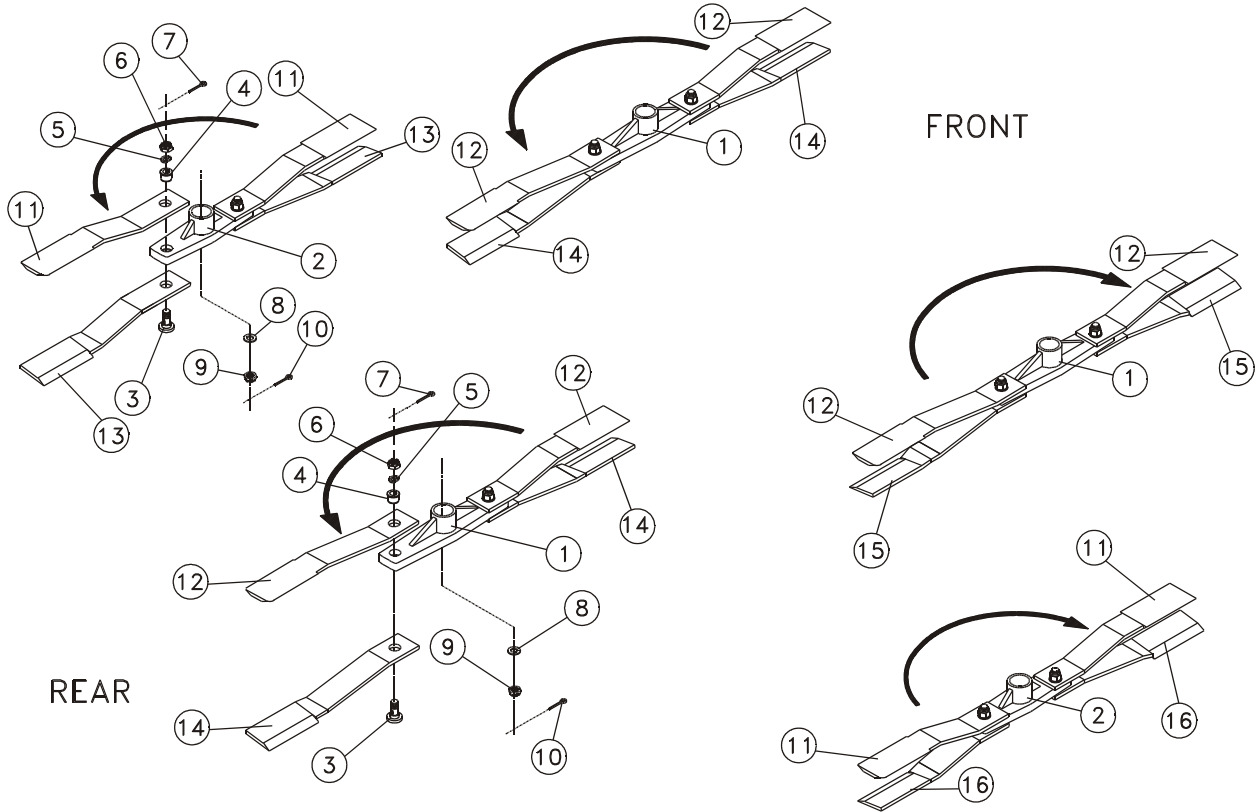
Double Chain Guards (C502-550)

Ref.	Part No.	Description	Qty.
1	270-007	Lock nut, 1/2" UNC	82
2	256-011	Flat washer, 1/2	94
3	250-048	Bolt, 1/2 x 4 UNC	14
4	250-050	Bolt, 1/2 x 3-1/2 UNC	18
5	250-053	Bolt, 1/2 x 3-3/4 UNC	44
6	250-070	Bolt, 1/2 x 5-1/2 UNC	2
7	250-059	Bolt, 1/2 x 1-1/2 UNC	2
8	250-046	Bolt, 1/2 x 5 UNC	2
9	C502-553	Chain guard double, wing front outer	2
10	C502-552	Chain guard double, wing front middle	2
11	C502-551	Chain guard double, wing front inner	2
12	C502-554	Chain guard double, center front	2
13	C502-555	Chain guard double, wing rear outer	2
14	C502-556	Chain guard double, wing rear middle	2
15	C502-557	Chain guard double, wing rear inner	4
16	C502-558	Chain guard double, center rear outer	2
17	C502-559	Chain guard double, center rear middle	1

Cable Kit for Double Chain Guards (C502-570)

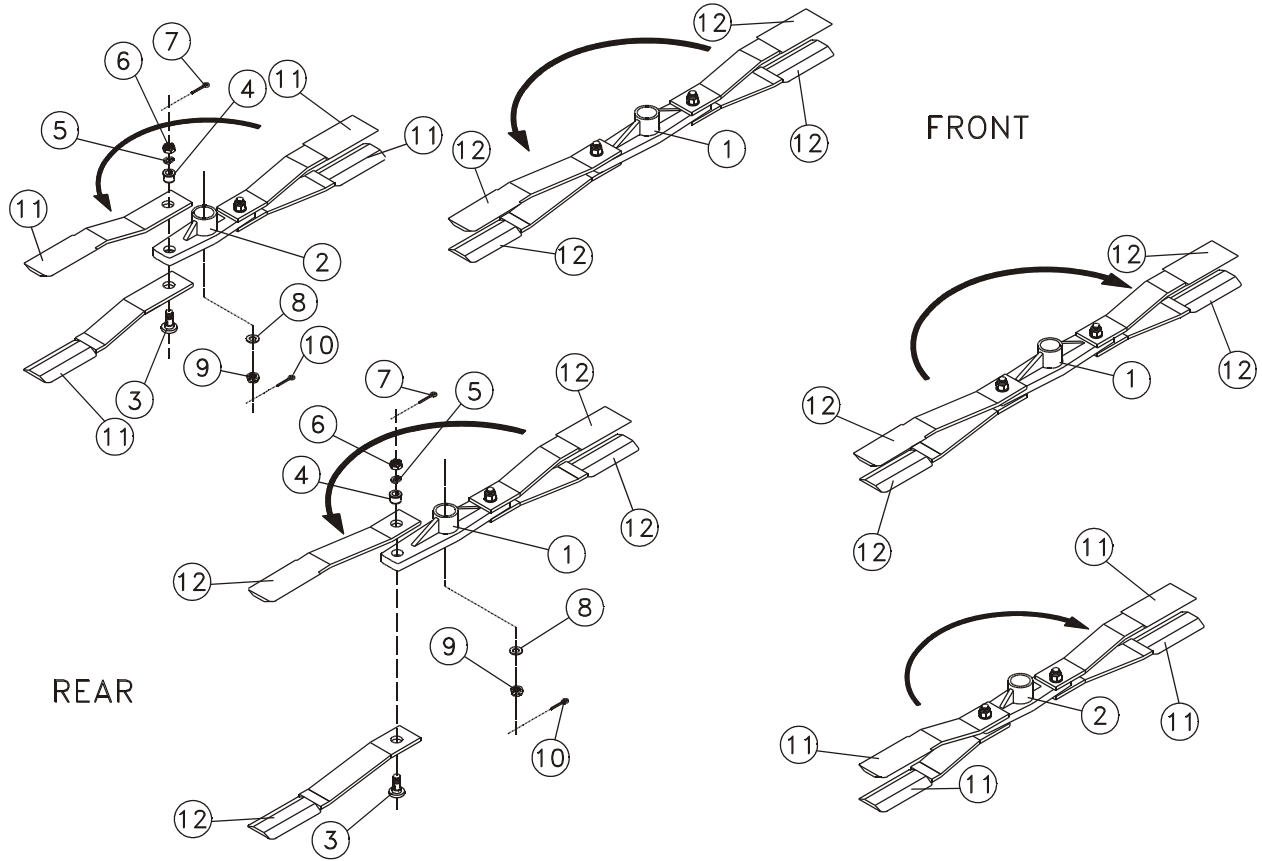
Ref.	Part No.	Description	Qty.
18	221-423	Chain guard cable, 139", front wing	2
19	221-422	Chain guard cable, 73", front center	1
20	221-424	Chain guard cable, 128", rear wing	2
21	221-425	Chain guard cable, 122", rear center	1
22	222-003	Cable clamp, 1/8"	12

FIXED BLADE SHREDDING, UPDRAFT BLADES (C502-270)



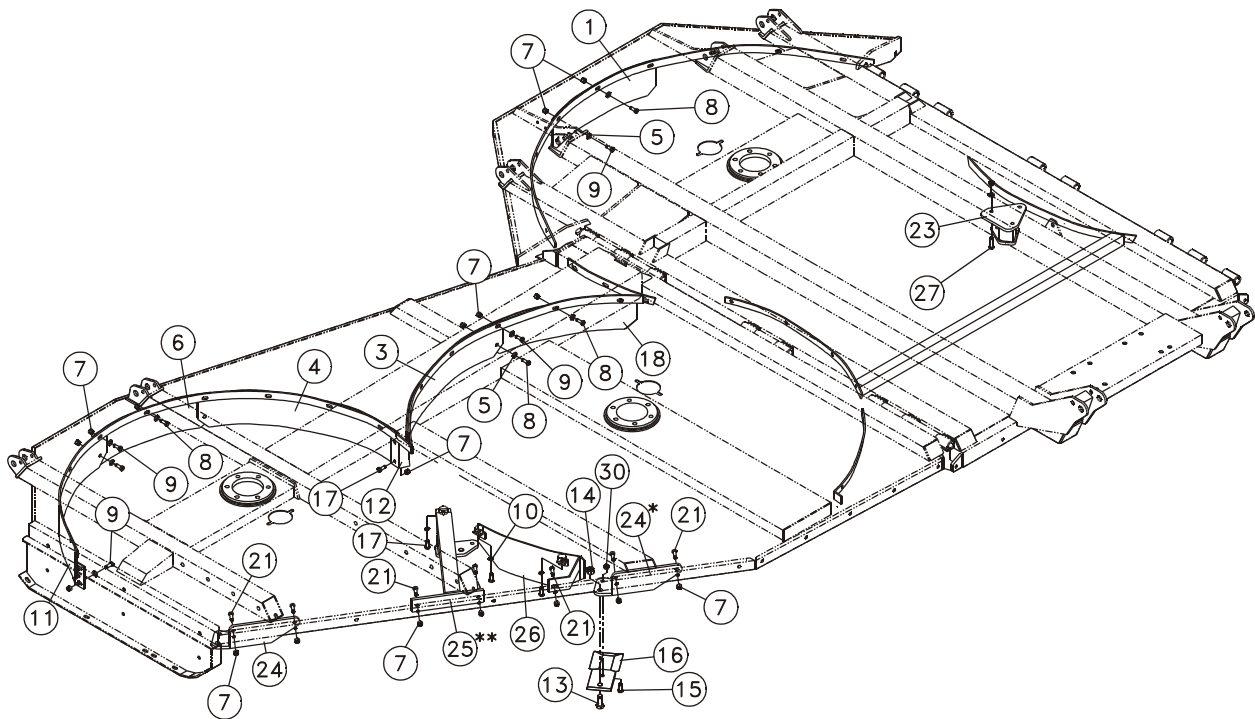
Ref.	Part No.	Description	Qty.
1	C000-120	Blade bar 6'	3
2	C000-121	Blade bar 5'	2
3	251-016	Blade bolt, 1/2 shredder blade	10
4	C000-201	Sleeve, 1.125 ID	10
5	255-021	Lock washer, 1-1/8	10
6	257-107	Castle nut, 1-1/8 UNF	10
7	271-011	Cotter pin, 1/4 x 2-1/2	10
8	331-814	Washer	5
9	331-813	Hexagon slotted nut	5
10	331-812	Cotter pin	5
11	401-016	Blade, 1/2 x 4 x 25 double edge	4
12	401-024	Blade, 1/2 x 4 x 28 double edge	6
13	401-027	Blade, 1/2 x 4 x 25, CCW, left wing, outer	2
14	401-028	Blade, 1/2 x 4 x 28, CCW center & left wing, inner	4
15	401-032	Blade, 1/2 x 4 x 28, CW, right wing, inner	2
16	401-026	Blade, 1/2 x 4 x 25, CW, right wing, outer	2

FIXED BLADE SHREDDING, FLAT BLADES (C502-280)



Ref.	Part No.	Description	Qty.
1	C000-120	Blade bar 6'	3
2	C000-121	Blade bar 5'	2
3	251-016	Blade bolt, 1/2 shredder blade	10
4	C000-201	Sleeve, 1.125 ID	10
5	255-021	Lock washer, 1-1/8	10
6	257-107	Castle nut, 1-1/8 UNF	10
7	271-011	Cotter pin, 1/4 x 2-1/2	10
8	331-814	Washer	5
9	331-813	Hexagon slotted nut	5
10	331-812	Cotter pin	5
11	401-016	Blade, 1/2 x 4 x 25 double edge	8
12	401-024	Blade, 1/2 x 4 x 28 double edge	12

FIXED BLADE SHREDDING KIT, SHROUDS



* For 38" row crop remove this blade mount from each wing.

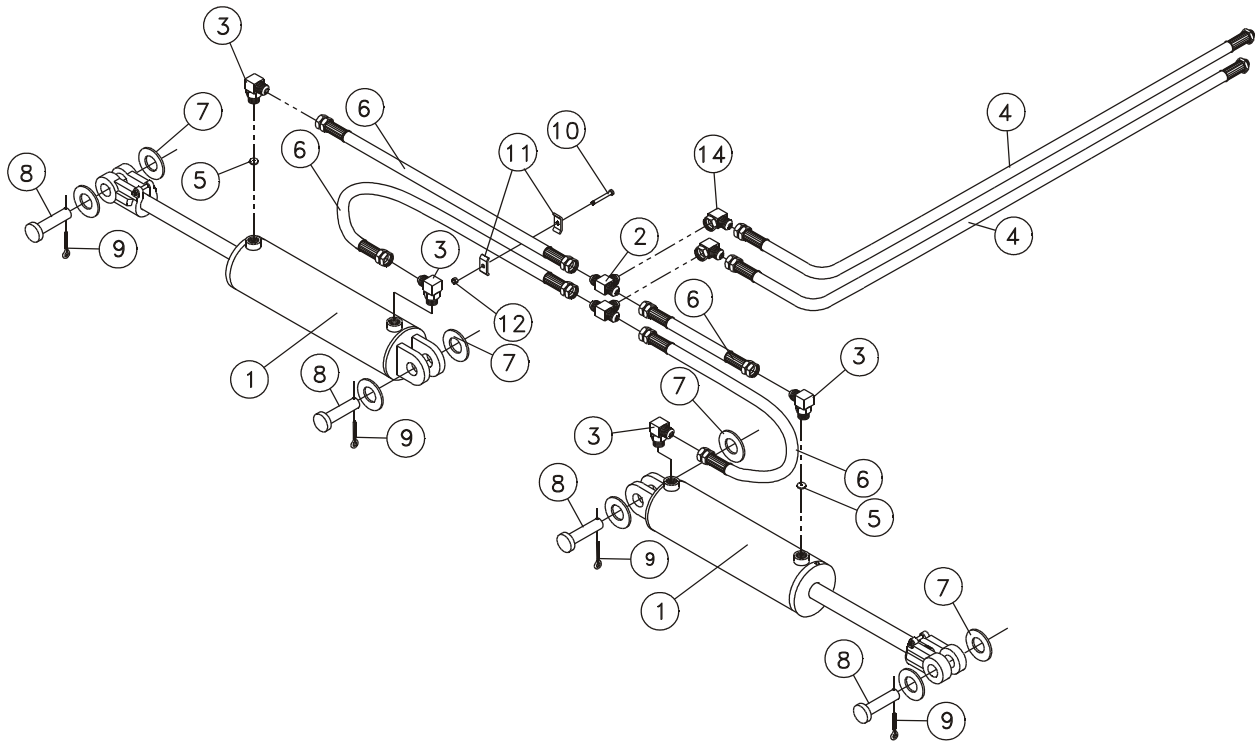
** For 30" row crop remove this blade mount from each wing.

NOTE: ALL SHROUDS ON THIS PAGE ARE INSTALLED ON THE OUTSIDE OF THE MOUNTS

FIXED BLADE SHREDDING KIT, SHROUDS

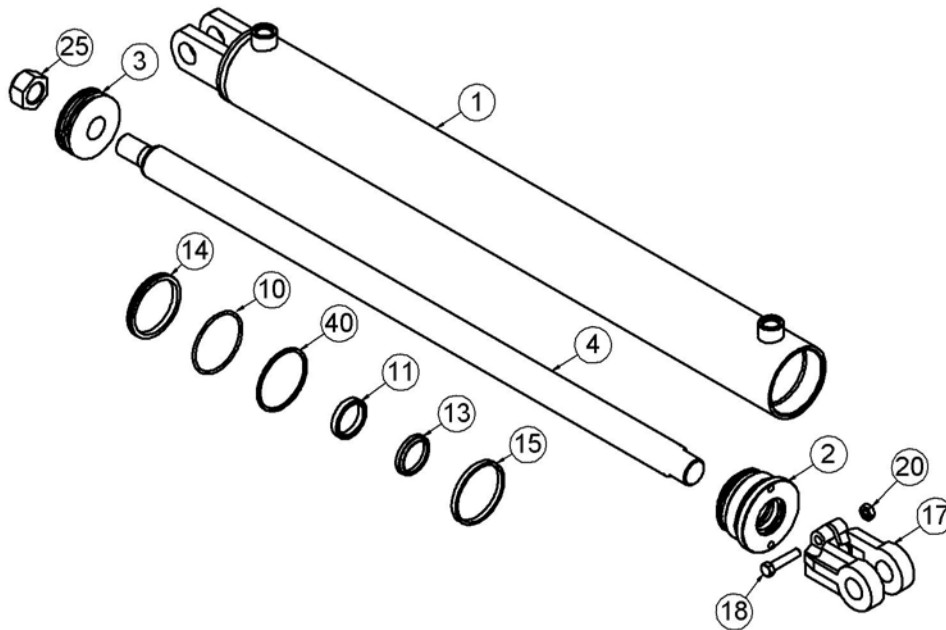
Ref.	Part No.	Description	Qty.
1	C502-301	Shroud, center rear center	1
3	C502-309	Shroud, left wing inner rear left	1
	C502-319	Shroud, right wing inner rear right	1
4	C502-311	Shroud, left wing outer rear right	1
	C502-313	Shroud, right wing outer rear left	1
5	256-011	Flat washer, 1/2	51
6	C502-312	Shroud, wing outer rear center	2
7	270-007	Lock nut, 1/2 UNC	84
8	250-061	Bolt, 1/2 x 1-1/4 UNC	43
9	250-059	Bolt, 1/2 x 1-1/2 UNC	22
10	255-009	Lock washer, 1/2	6
11	C502-291	Shroud, left wing outer rear left	1
	C502-292	Shroud, right wing outer rear right	1
12	C502-317	Join plate, wing rear	2
13	250-1141	Bolt, 3/4 x 2-1/2 UNF	7
14	270-0011	Lock nut, 3/4 UNF	7
15	250-0571	Shear bolt, 1/2 x 2 GR5 UNF	7
16	401-206	Blade, 1/2 x 4 x 10 fixed dbl edge	7
17	250-063	Bolt, 1/2 x 1 UNC	14
18	C502-305	Shroud, left wing inner rear right	1
	C502-306	Shroud, right wing inner rear left	1
21	250-047	Bolt, 1/2 x 4-1/2 UNC	14
23	C502-284	Blade mount, center section	1
24	C502-285	Blade mount, left	2
	C502-286	Blade mount, right	2
25	C502-296	Blade mount, left, 38" row	1
	C502-297	Blade mount, right, 38" row	1
26	C502-298	Shroud, front, left wing	1
	C502-299	Shroud, front, right wing	1
27	250-057	Bolt, 1/2 x 2 GR5 UNC	3
30	270-008	Lock nut, 1/2 UNF	7

WING LIFT CIRCUIT



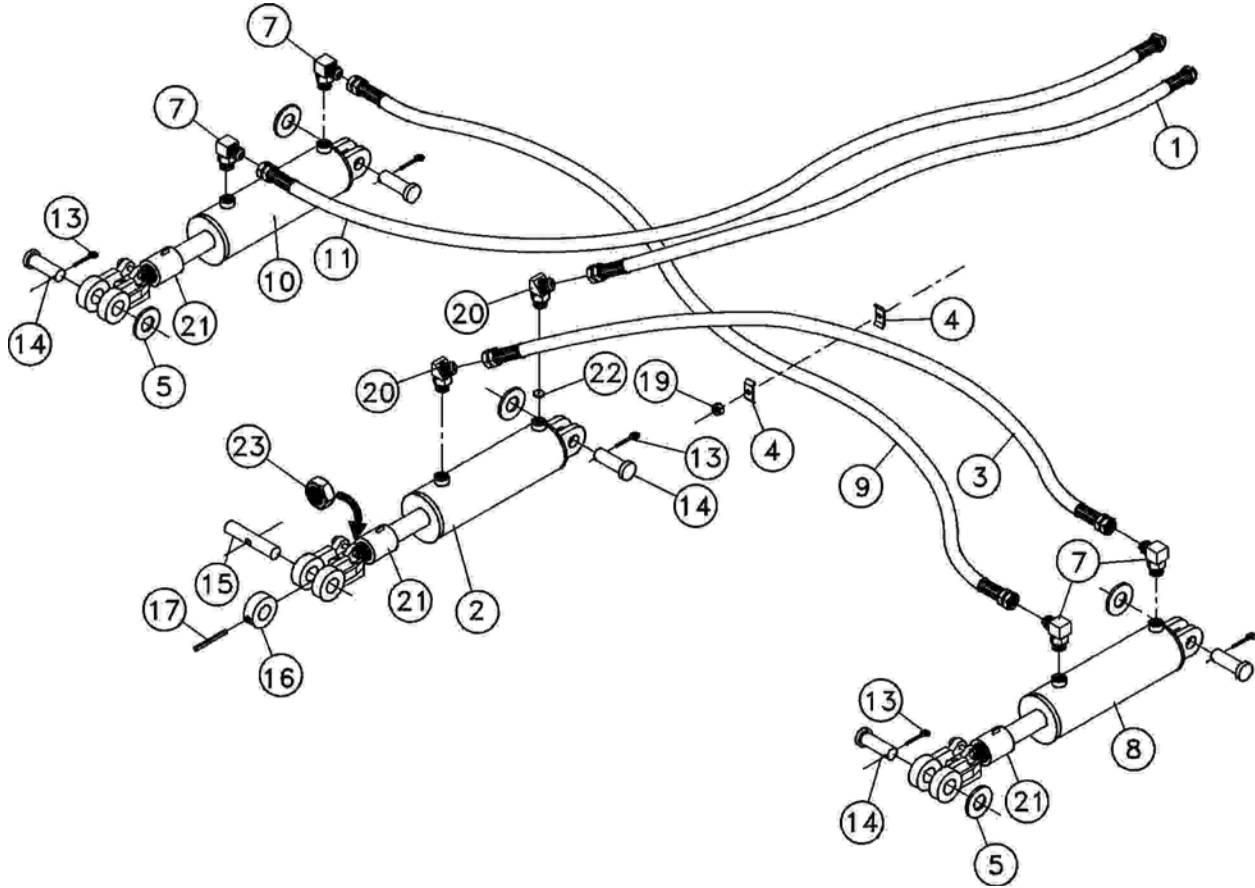
Ref.	Part No.	Description	Qty.
1	100-3092	Cylinder 3 X 30, Monarch	2
2	108-005	Male tee, 3/4-16 JIC	2
3	108-043	Elbow, 3/4 ORB male X JIC male	4
4	111-263	Hose assembly, 3/8 x 203" lg w/ couplers	2
5	108-0071	Brass restrictor	2
6	111-179	Hose assembly, 3/8 x 69" long	4
7	256-001	Flat washer, 1	4
8	302-015	Clevis pin, 1 x 2-7/8 U.L.	4
9	271-005	Cotter pin, 3/16 x 1-1/2	4
10	250-023	Bolt, 3/8 x 1-3/4 UNC	2
11	C000-001	Hose clamp, metal	4
12	270-017	Lock nut, 3/8 UNC	2
14	108-031	Elbow, male JIC x female JIC	2

WING LIFT CYLINDER, Monarch (100-3092)



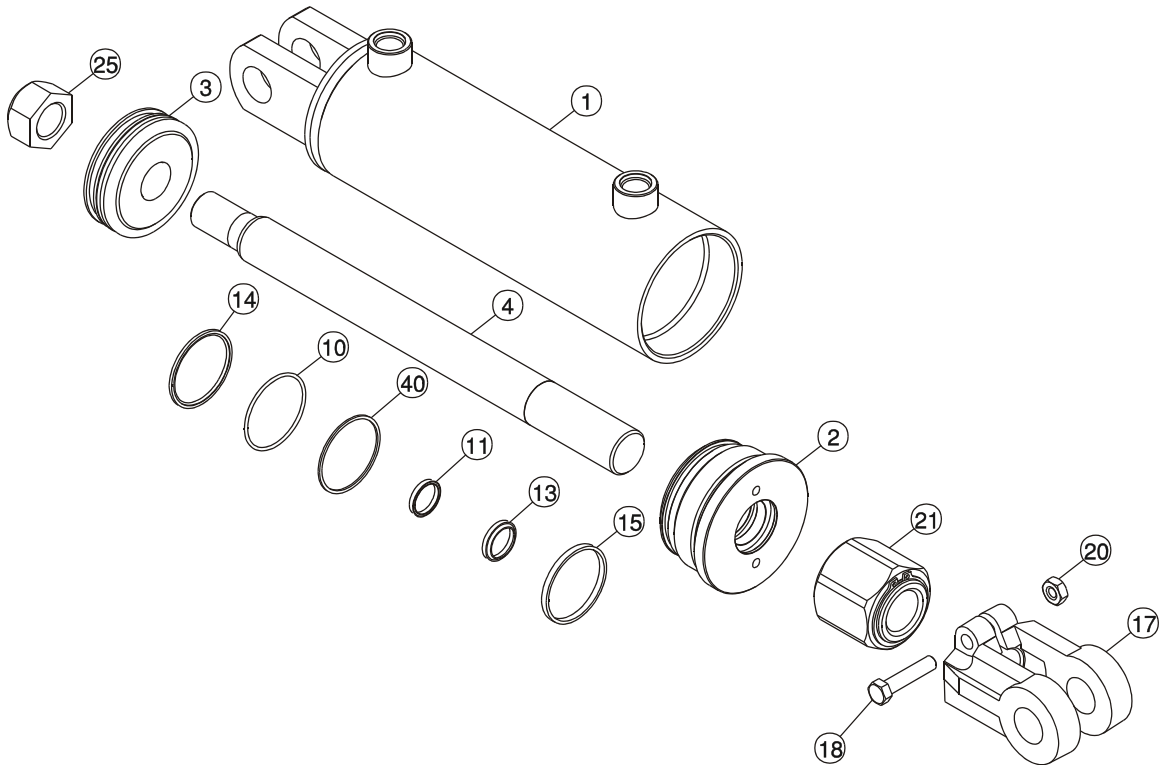
Ref.	Part No.	Description	Qty.
1	101-130	Casing, 3" x 30"	1
2	101-131	Cylinder Head	1
3	101-132	Piston	1
4	101-133	Rod	1
17	101-021	Rod Clevis	1
18	250-023	Bolt, 3/8" x 1-3/4" UNC, GR5	1
20	270-017	Lock Nut, 3/8" UNC	1
25	101-243	Lock Nut, 1"	1
41	101-026W	Seal Kit, Includes # 10, 11, 13-15, 40	1

PHASING CIRCUIT



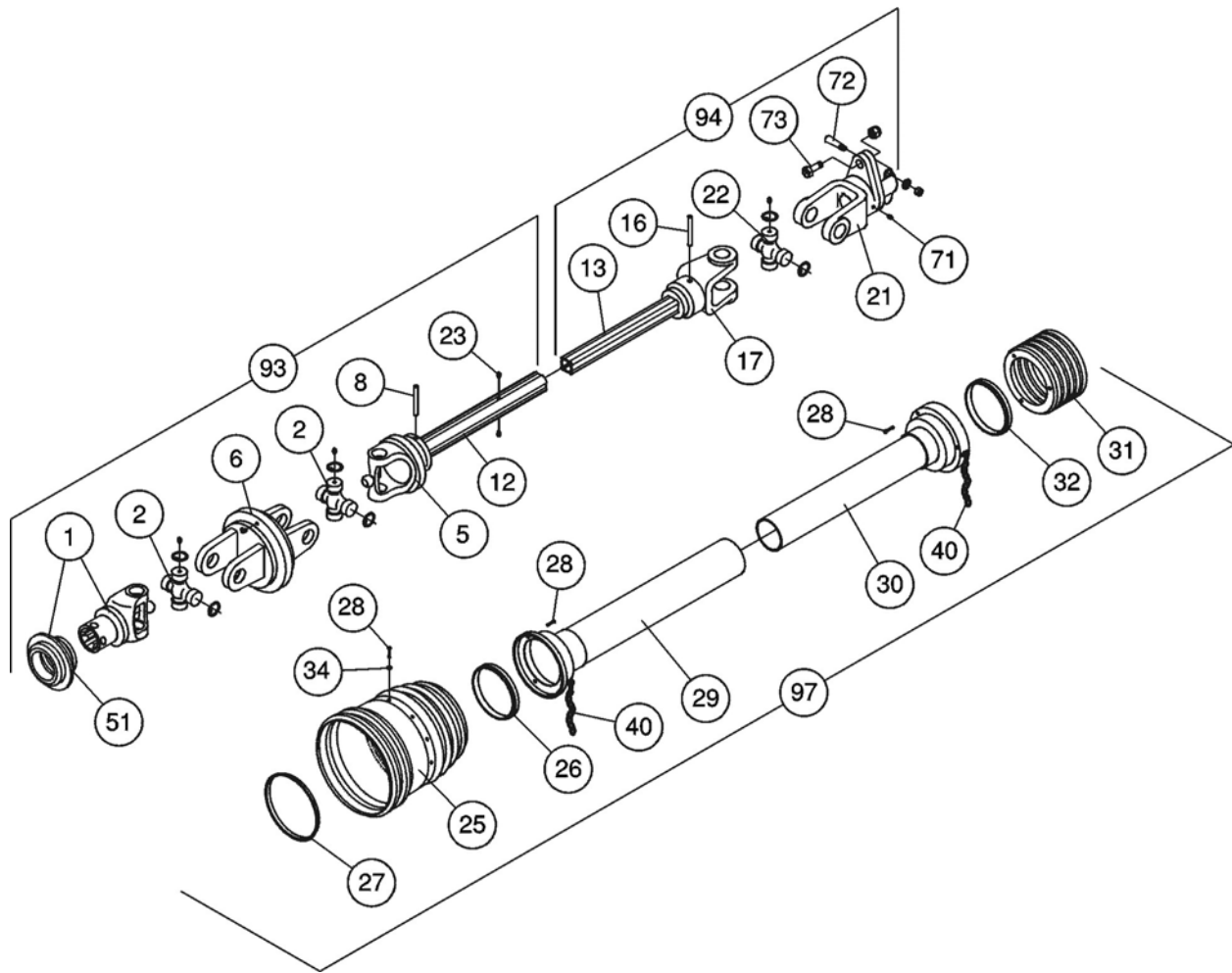
Ref.	Part No.	Description	Qty.
1	111-264	Hose assembly, 3/8 x 213" lg w/ couplers	1
2	100-3672	Cylinder phasing, 3-1/2 x 8, Monarch	1
3	111-196	Hose assembly, 3/8 x 128" long	1
4	C000-001	Hose clamp, metal	2
5	256-001	Flat washer, 1"	5
7	108-043	Elbow, 3/4 ORB male X JIC male	4
8	100-3682	Cylinder phasing, 3-1/4 x 8, Monarch	1
9	111-197	Hose assembly, 3/8 x 270" long	1
10	100-3692	Cylinder phasing, 3 x 8, Monarch	1
11	111-265	Hose assembly, 3/8 x 358" lg w/ couplers	1
13	271-005	Cotter pin, 3/16 x 1-1/2	5
14	302-015	Clevis pin, 1 x 2-7/8 U.L.	5
15	C502-193	Pin, center section cylinder	1
16	C502-194	Sleeve, cylinder pin	1
17	262-006	Roll pin, 3/8 x 2	1
19	270-017	Lock nut, 3/8 UNC	1
20	108-044	Elbow, 45 deg. ORB x JIC	2
21	101-020	Depth stop	3
22	108-0071	Brass restrictor	1
23	257-055	Jam nut, 1-1/4" UNF shredder units only	1

PHASING CYLINDERS, MONARCH



Ref.	3"	3-1/4"	3-1/2"	Description	Qty.
	Part No.	Part No.	Part No.		
	100-3692	100-3682	100-3672		
1	101-134	101-135	101-136	Casing	1
2	101-137	101-138	101-139	Cylinder Head	1
3	101-082	101-083	101-084	Piston	1
4	101-142	101-142	101-142	Rod	1
17	101-021	101-021	101-021	Rod Clevis	1
18	250-023	250-023	250-023	Bolt, 3/8" x 1-3/4" UNC, GR5	1
20	270-017	270-017	270-017	Lock Nut, 3/8" UNC	1
21	101-020	101-020	101-020	Stroke Control Assembly	1
22	101-243	101-243	101-243	Lock Nut, 1"	1
41	101-065	101-066	101-067	Seal Kit, Incl #10,11,13-15,40	1

TRACTOR UNIVERSAL JOINT, SFT-S8 W/ 80° C.V. JOINT



TRACTOR UNIVERSAL JOINT, SFT-S8 W/ 80° C.V. JOINT

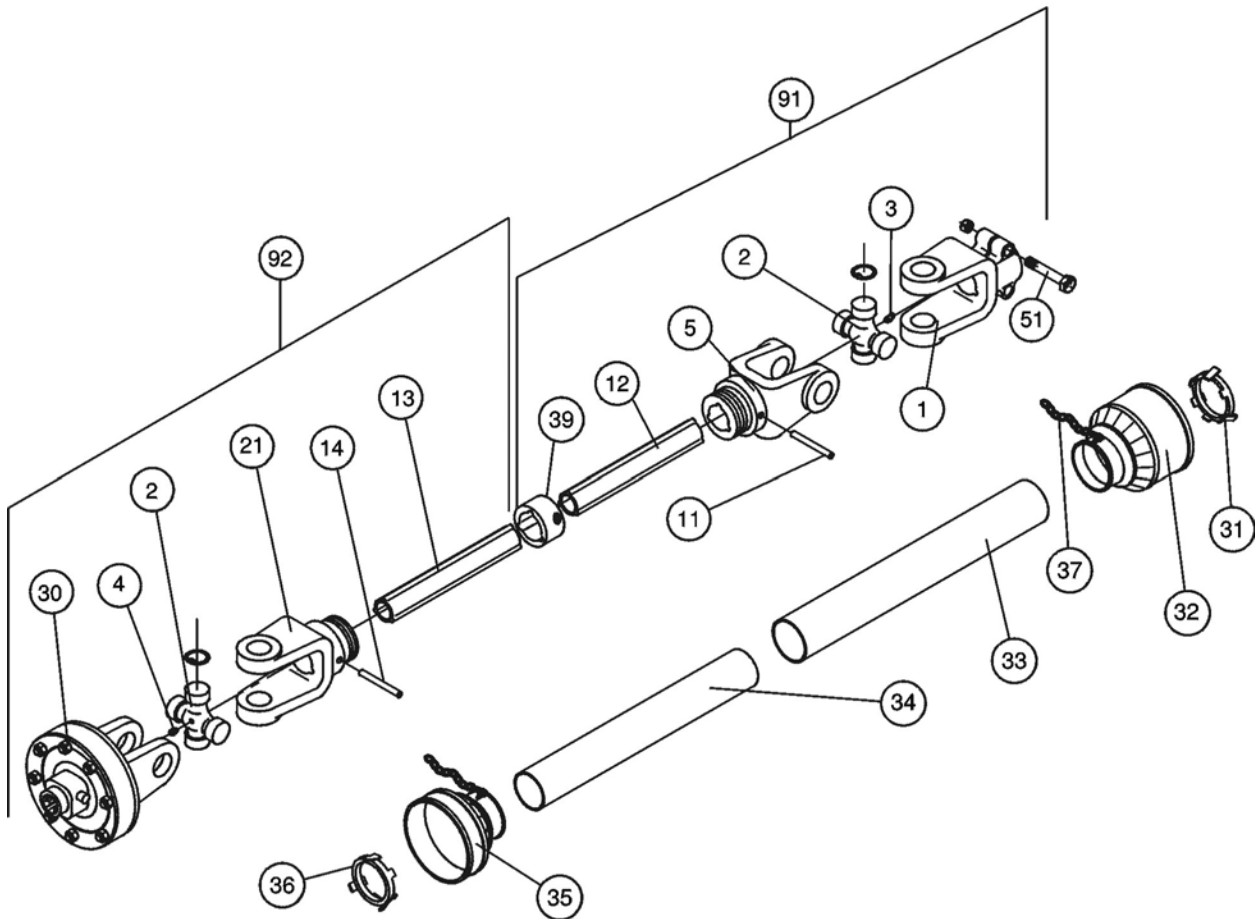
**ORDER REPLACEMENT PARTS FROM THIS PAGE
IF THE SHAFT HAS BLACK SHIELDS**

340-8082 Location: Tractor Assembly, 1 3/4 x 20 spline

340-8092 Location: Tractor Assembly, 1 3/8 x 21 spline

Ref.	Part No.	Description	Qty.
1	341-80043	Yoke QD, 1-3/4" z20	1
	341-80044	Yoke QD, 1-3/8" z21	1
2	341-80047	Cross Kit	2
5	341-80048	Yoke, Outer Tube	1
6	341-80045	Central Body	1
8	341-80074	Flexible Pin	1
12	341-80051	Outer Cardan Tube	1
13	341-80052	Inner Cardan Tube	1
16	341-80007	Flexible Pin	1
17	341-80008	Yoke, Inner Tube	1
21	341-80060	Shear Yoke	1
22	341-80002	Cross Kit	1
23	341-8086	Grease Fitting, Short	2
25	341-80049	Bell Assembly	1
26	341-60039	Shield Bearing, Outer	1
27	341-80050	Ring	1
28	341-60020	Screw	12
29	341-80053	Outer Bell & Tube	1
30	341-80054	Inner Bell & Tube	1
31	341-80059	Shield	1
32	341-60014	Shield Bearing, Inner	1
34	341-80069	Washer	6
40	341-60021	Shield Chain, Complete Set	1
71	341-653	Grease Fitting	1
72	341-802	Tapered Pin & Nut	1
73	341-80071	Shear Bolt & Nut M10x50, CL10.9 1-3/4 z20	1
	341-705	Shear Bolt & Nut M10x50, CL8.8 1-3/8 z21	1
93	341-80064	Tractor Half Assembly w/ shields, 1-3/4 z20	1
	341-80065	Tractor Half Assembly w/ shields, 1-3/8 z21	1
94	341-80066	Cutter Half Assembly w/ shields	1
97	341-80068	Complete Shield Set	1

CENTER & WING UNIVERSAL JOINT, BP SIZE 6



CENTER & OUTER WING UNIVERSAL JOINT, BP SIZE 6

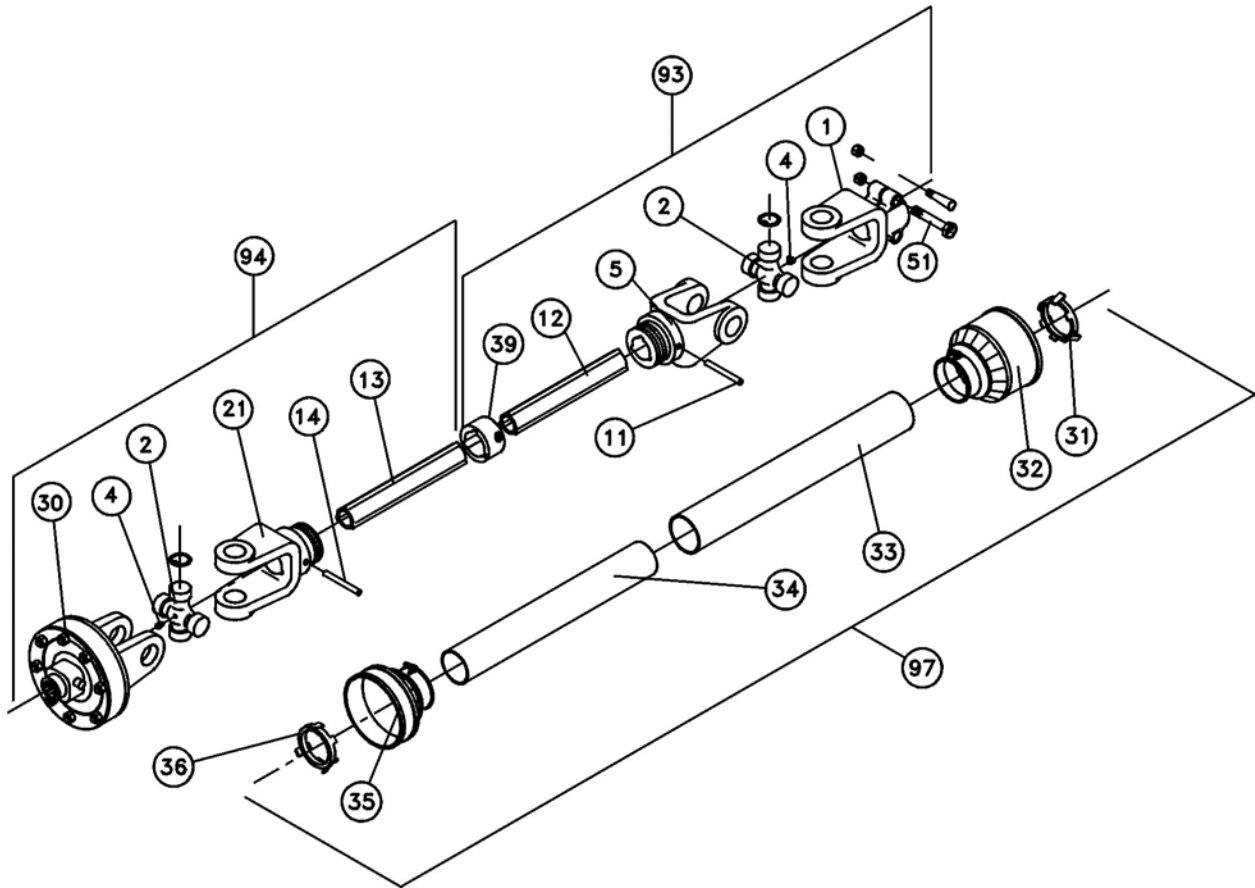
340-6132 Location: Outer Wing Assembly

Ref.	Part No.	Description	Qty.
1	341-0637	Yoke	1
2	341-605	Cross kit complete	2
3	341-603A	Grease nipple, 90°	1
4	341-603	Grease nipple, 45°	1
5	341-622	Yoke, outer tube	1
11	341-621	Flexible pin	1
12	341-6002	Outer tube	1
13	341-6003	Inner tube	1
14	341-616	Flexible pin	1
21	341-617	Yoke, inner tube	1
30	341-6320	Slip clutch, FT	1
31	341-615	Inner retainer	1
32	341-0681	Inner bell	1
33	341-0686	Inner safety tube	1
34	341-0685	Outer safety tube	1
35	341-0680	Outer bell	1
36	341-610	Outer retainer	1
37	341-0613	Chain	2
39	341-619	Ring nut	1
51	341-633	Bolt & nut	1
91	341-6302	Female U-Joint half	1
92	341-6303	Male U-Joint half	1

340-6142 Location: Center Assembly

Ref.	Part No.	Description	Qty.
1	341-0637	Yoke	1
2	341-605	Cross kit complete	2
3	341-603A	Grease nipple, 90°	1
4	341-603	Grease nipple, 45°	1
5	341-622	Yoke, outer tube	1
11	341-621	Flexible pin	1
12	341-6000	Outer tube	1
13	341-6001	Inner tube	1
14	341-616	Flexible pin	1
21	341-617	Yoke, inner tube	1
30	341-6321	Slip clutch, FT	1
31	341-615	Inner retainer	1
32	341-0681	Inner bell	1
33	341-0688	Inner safety tube	1
34	341-0687	Outer safety tube	1
35	341-0680	Outer bell	1
36	341-610	Outer retainer	1
37	341-0613	Chain	2
39	341-619	Ring nut	1
51	341-633	Bolt & nut	1
91	341-6304	Female U-Joint half	1
92	341-6305	Male U-Joint half	1

INNER WING UNIVERSAL JOINT, BP SIZE 8

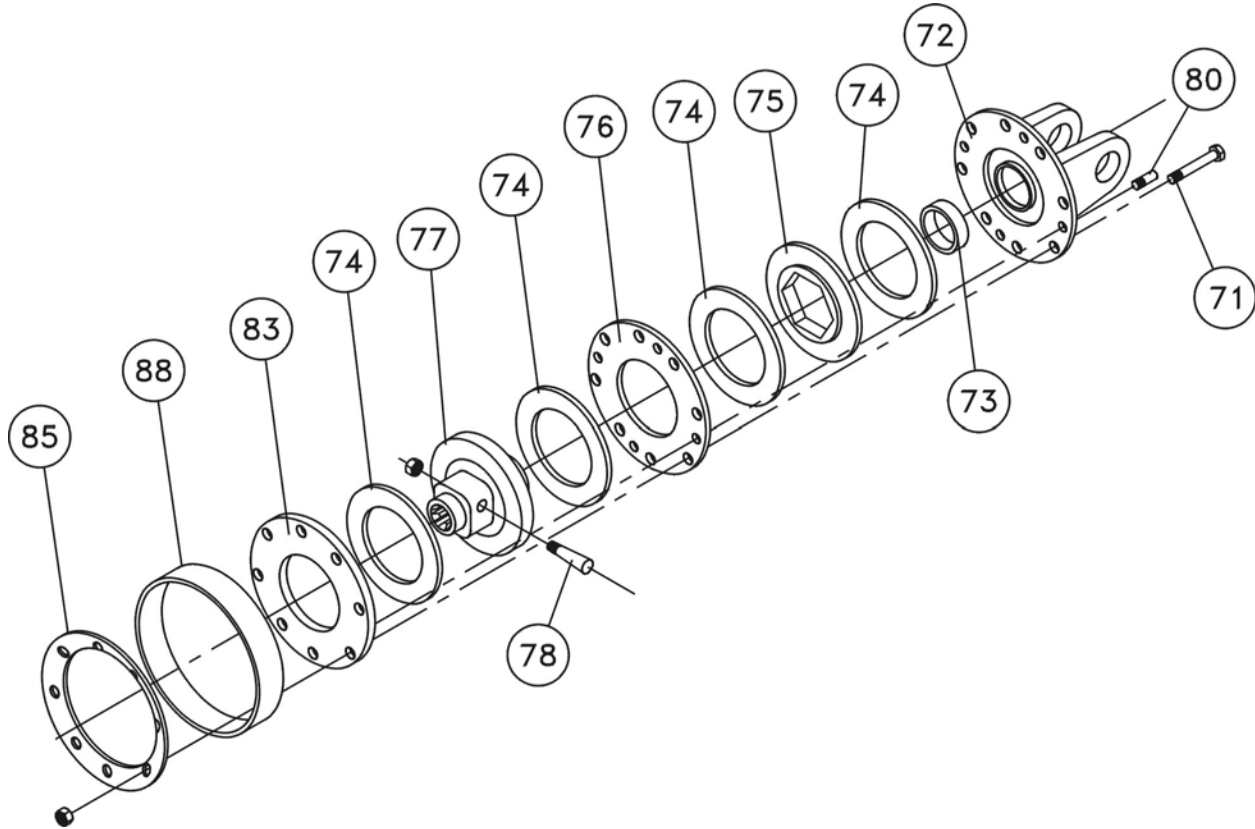


INNER WING UNIVERSAL JOINT, BP SIZE 8

340-8002 Location: Inner Wing Assemblies

Ref.	Part No.	Description	Qty.
1	341-8101	Yoke, split clamp style, 1-3/8 x 21	1
2	341-645	Cross kit complete	2
4	341-603A	Grease nipple, 90°	2
5	341-769	Outer tube yoke	1
11	341-744	Flexible pin	1
12	341-8102	Outer tube	1
13	341-8103	Inner tube	1
14	341-8017	Spring pin	1
21	341-0805	Inner tube yoke	1
30	341-8128	Slip clutch FT	1
31	341-637	Inner bearing	1
32	341-776	Outer cone set	1
33	341-8104	Outer safety tube	1
34	341-8105	Inner safety tube	1
35	341-8024	Inner cone set	1
36	341-642	Inner bearing	1
39	341-0815	Ring nut	1
51	341-633	Bolt & nut	1
93	341-8106	Female U-Joint half	1
94	341-8107	Male U-Joint half, less clutch	1
97	341-8052	Complete shield	1

SLIP CLUTCH, INNER WING

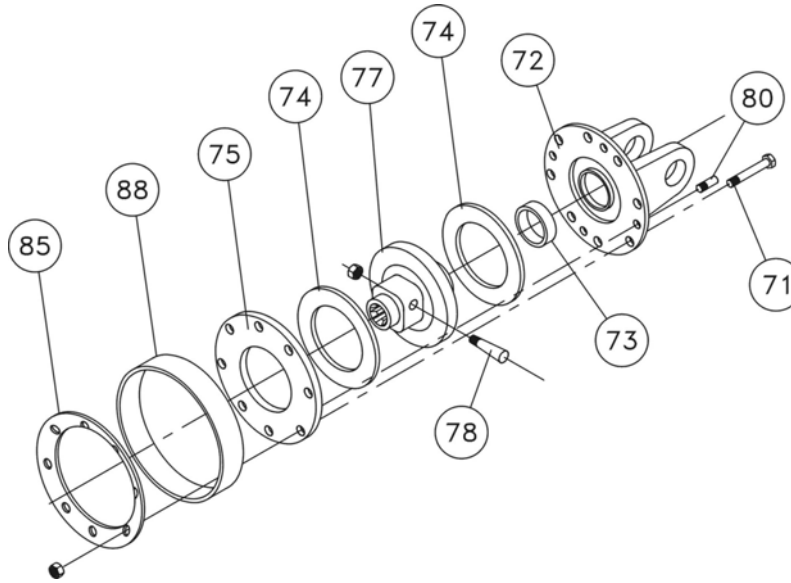


341-8128 BP FT44R Size 8
Location: Inner Wing Driveline

Ref.	Part No.	Description	Qty.
71	341-8120	Bolt and nut	8
72	341-8121	Clutch plate (With set screw holes)	1
72	341-8127	Clutch plate (Without set screw holes)	1
73	341-630	Bushing	1
74	341-6247	Lining	4
75	341-8122	Lining	1
76	341-8123	Inner plate (With set screw holes)	1
76	341-8138	Inner plate (Without set screw holes)	1
77	341-8124	Splined hub	1
78	341-801	Tapered pin	1
80	341-6207	Screw	4
83	341-6248	Thrust plate	1
85	341-8129	Spring	1
88	341-8125	Spacer	1

Note: 341-8127 will replace 341-8121 if replacement parts are ordered.

SLIP CLUTCH, CENTER & OUTER WING



341-6320 BP FT42R Size 6
Location: Outer Wing Driveline

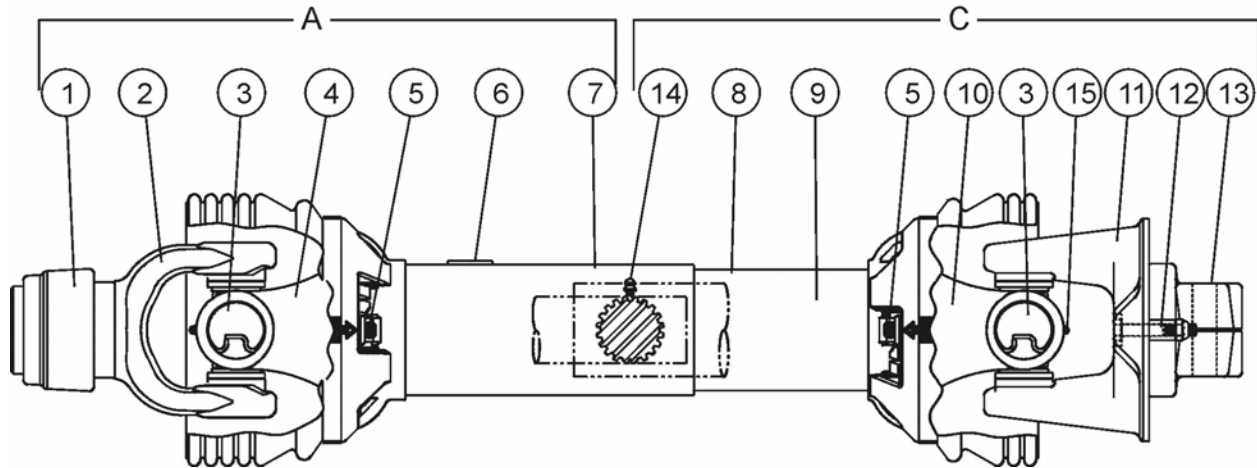
Ref.	Part No.	Description	Qty.
71	341-6014	Screw	8
72	341-6246	Clutch plate (With set screw holes)	1
72	341-6312	Clutch Plate (Without set screw holes)	1
73	341-630	Bushing	1
74	341-6247	Lining	2
75	341-6248	Thrust plate	1
77	341-6306	Hub	1
78	341-801	Tapered pin	1
80	341-6232	Screw	4
85	341-6313	Spring	1
88	341-6251	Spacer	1

341-6321 BP FT32R Size 6
Location: Center Driveline

Ref.	Part No.	Description	Qty.
71	341-6014	Screw	8
72	341-6202	Clutch plate (With set screw holes)	1
72	341-6316	Clutch plate (Without set screw holes)	1
73	341-630	Bushing	1
74	341-6228	Lining	2
75	341-6229	Thrust plate	1
77	341-6307	Hub	1
78	341-801	Tapered pin	1
80	341-6232	Screw	4
85	341-6317	Spring	1
88	341-6234	Spacer	1

Note: Clutch plates without set screw holes will replace ones with set screw holes.

TRACTOR SHAFT, NON-CV, WEASLER 55E

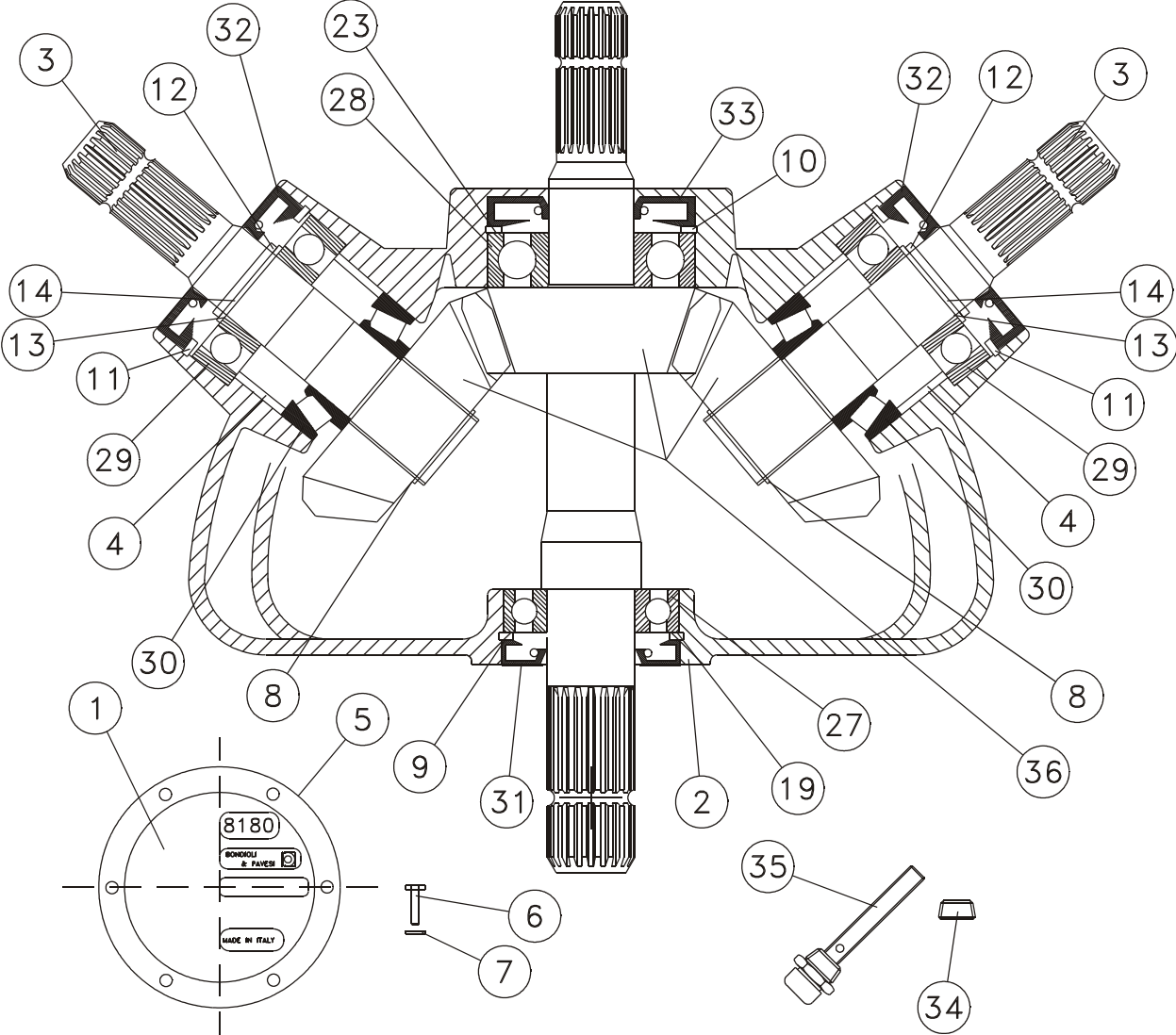


340-5505 Location: Tractor Assembly, 1-3/8 x 21 spline

340-5506 Location: Tractor Assembly, 1-3/4 x 20 spline

Ref.	Part No.	Description	Qty.
A	341-5556	Joint & Shaft Half w/ Guard, 1-3/8 x 21	1
A	341-5557	Joint & Shaft Half w/ Guard, 1-3/4 x 20	1
C	341-5558	Joint & Shaft Half w/ Guard	1
1	341-5501	Auto Lok repair Kit, 1-3/8 x 21	1
1	341-5522	Auto Lok Repair Kit, 1-3/4 x 20	1
2	341-5523	Yoke, Q.D., 1-3/8 x 21	1
2	341-5524	Yoke, Q.D., 1-3/4 x 20	1
3	341-5559	Cross Kit	2
4	341-5560	Yoke & Shaft	1
5	341-5549	Nylon Repair Kit	2
6	341-5512A	Safety Sign	1
7	341-5561	Outer Guard	1
8	341-5562	Inner Guard	1
9	341-5512B	Safety Sign (not shown)	1
10	341-5563	Yoke & Sleeve	1
11	341-5521	Shear Yoke Assembly	1
12	250-010K	Shear Bolt & Nut, Grade 5	1
13A	250-0861	Bolt, 5/8" x 3-1/2" UNC, gr8	2
13B	257-019	5/8" Nut, UNC	2
13C	255-005	5/8" Lock Washer	2
14	341-5554	Grease Fitting	1
15	341-5555	Grease Fitting	2

DIVIDER GEARBOX (330-921)

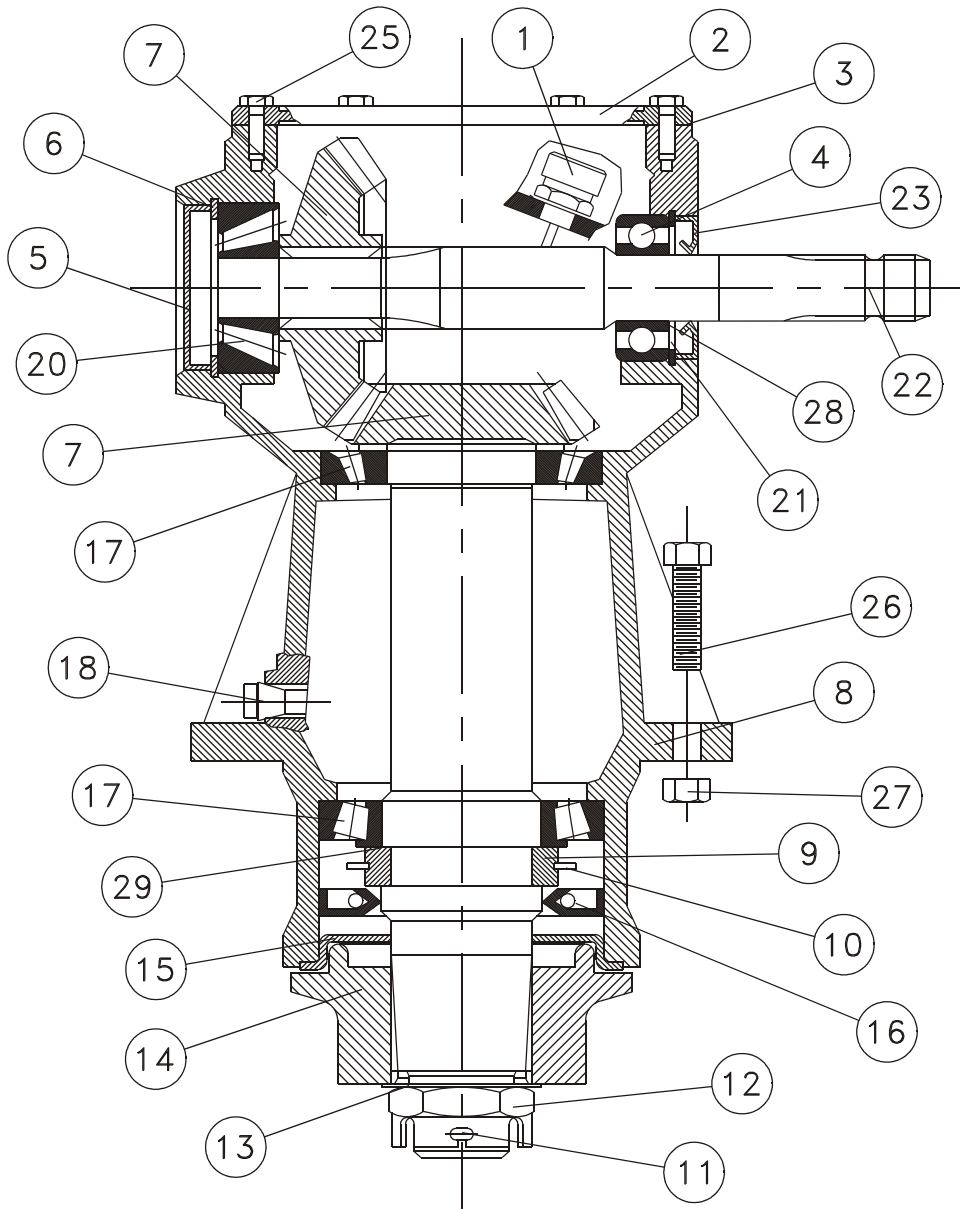


DIVIDER GEARBOX (330-921)

330-921 BP# S8180065002, 1.54:1 ratio
Location: Center Section

Ref.	Part No.	Description	Qty.
1	331-9001	Cover	1
2	331-9040	Housing	1
3	331-9043	Shaft	2
4	331-9041	Spacer	2
5	331-9005	Gasket	1
6	331-9006	Bolt	6
7	331-9007	Washer	6
8	331-9008	Snap ring	2
9	331-9009	Snap ring	1
10	331-9010	Circlip	1
11	331-9011	Circlip	2
12	331-8016	Snap ring	2
13	331-9012	Shim kit	2
14	331-9042	Spacer	2
19	331-9013	Shim kit	1
23	331-9014	Shim kit	1
27	331-9015	Ball bearing	1
28	331-9016	Bearing	1
29	331-9017	Bearing	2
30	331-9018	Tapered roller bearing	2
31	331-9019	Oil seal	1
32	331-8015	Oil seal	2
33	331-9020	Oil seal	1
34	331-9021	Plug	1
35	331-9022	Plug vent	1
36	331-9044	Bevel gear set c/w crown shaft	1

RIGHT ANGLE GEARBOX (330-830)



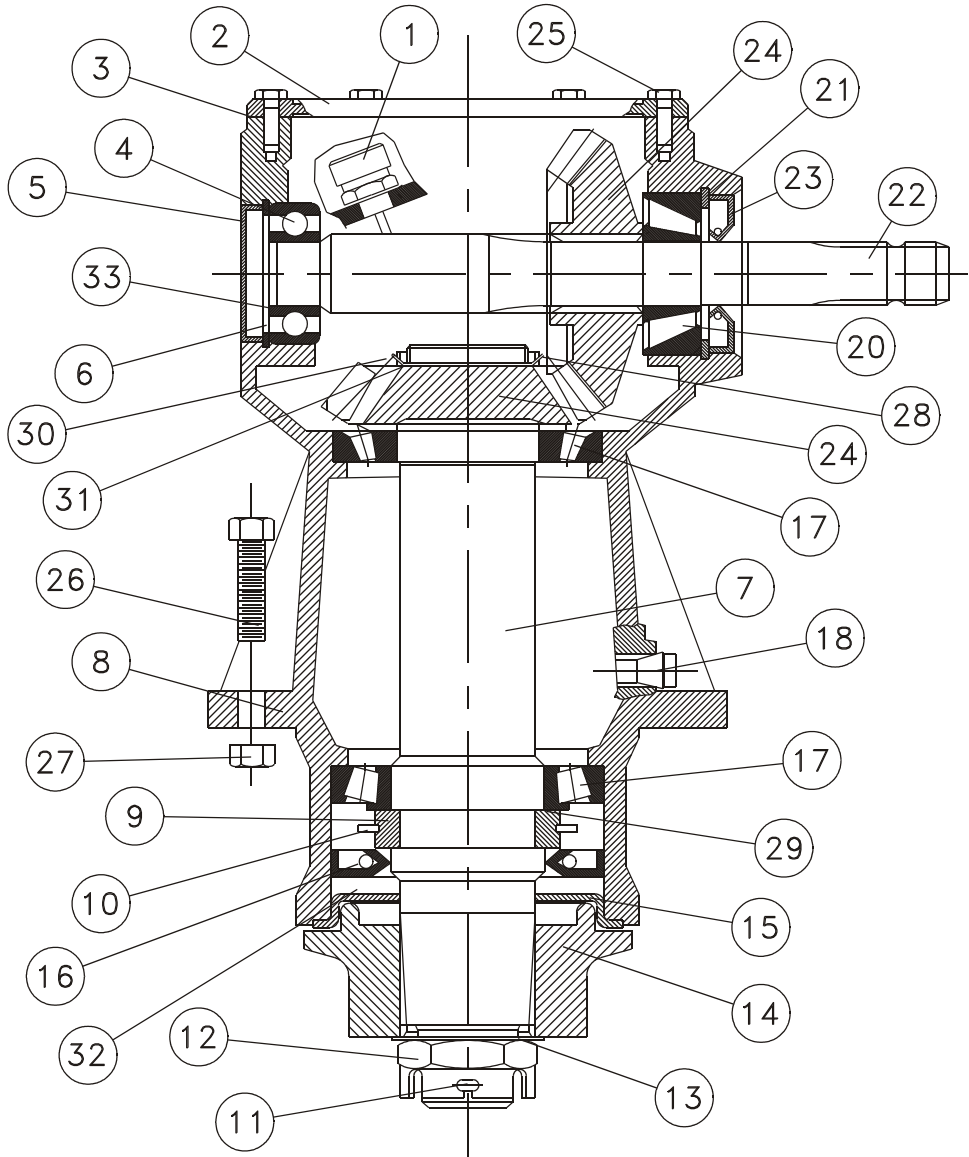
**WHEN ORDERING GEAR BOX PARTS PLEASE SUPPLY
PART NUMBER STAMPED ON GEAR BOX COVER**

RIGHT ANGLE GEARBOX (330-830)

330-830 BP# S3070150019, 1:1.5 ratio, 3070 F2
Location: Outer Wing, CCW rotation

Ref.	Part No.	Description	Qty.
1	331-801	Oil plug	1
2	331-802	Cover	1
3	331-803	Gasket	1
4	331-804	Ball bearing	1
5	331-827	Cap	1
6	331-822	Snap ring	1
7	331-844	Pinion shaft & Crown gear, 1:1.5	1
8	331-828	Housing	1
9	331-810	Split shoulder ring	1
10	331-811	Snap ring	1
11	331-812	Cotter pin	1
12	331-813	Hexagon slotted nut	1
13	331-814	Washer	1
14	331-815	Splined hub	1
15	331-843	Sealing Lid	1
16	331-817	Oil seal	1
17	331-818	Tapered roller bearing	1
18	331-819	Oil drain	1
19	331-820	Tapered roller bearing	1
20	331-841	Tapered roller bearing	1
21	331-806	Snap ring	1
22	331-897	Input shaft	1
23	331-830	Oil seal	1
25	331-826	Hex screw, M6 x 16	6
26	250-088	Bolt, 5/8 X 2-1/2 UNC	6
27	270-004	Lock nut, 5/8 UNC	6
28	331-842	Shim Kit, input shaft	
29	331-848	Shim Kit, pinion shaft	

RIGHT ANGLE GEARBOX (330-831)



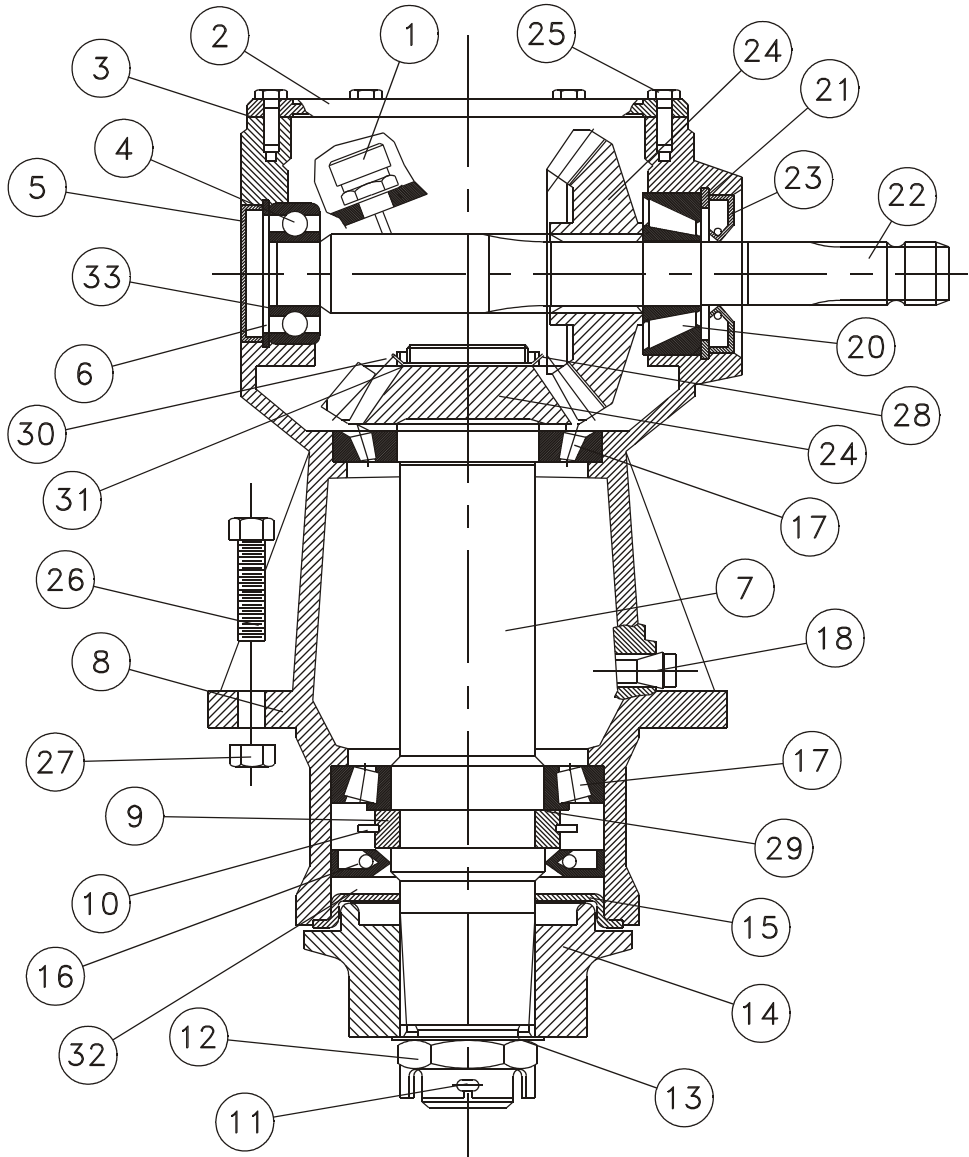
**WHEN ORDERING GEAR BOX PARTS PLEASE SUPPLY
PART NUMBER STAMPED ON GEAR BOX COVER**

RIGHT ANGLE GEARBOX (330-831)

330-831 BP# S3070150018, 1:1.5 ratio, 3070 R2
Location: Outer Wing, CW rotation

Ref.	Part No.	Description	Qty.
1	331-801	Oil plug	1
2	331-802	Cover	1
3	331-803	Gasket	1
4	331-804	Ball bearing	1
5	331-805	Cap	1
6	331-806	Snap ring	1
7	331-844	Pinion shaft, and Crown gear, 1:1.5	1
8	331-809	Housing	1
9	331-810	Split shoulder ring	1
10	331-811	Snap ring	1
11	331-812	Cotter pin	1
12	331-813	Hexagon slotted nut	1
13	331-814	Washer	1
14	331-815	Splined hub	1
15	331-843	Sealing lid	1
16	331-817	Oil seal	1
18	331-819	Oil drain	1
19	331-818	Tapered roller bearing	2
20	331-841	Tapered roller bearing	1
21	331-822	Snap ring	1
22	331-896	Input shaft	1
23	331-824	Oil seal	1
25	331-826	Hex screws, M6 x 16	6
26	250-088	Bolt, 5/8 X 2-1/2 UNC	6
27	270-004	Lock nut, 5/8 UNC	6
28	331-842	Shim Kit, input shaft	
29	331-848	Shim Kit, pinion shaft	

RIGHT ANGLE GEARBOX (330-832)



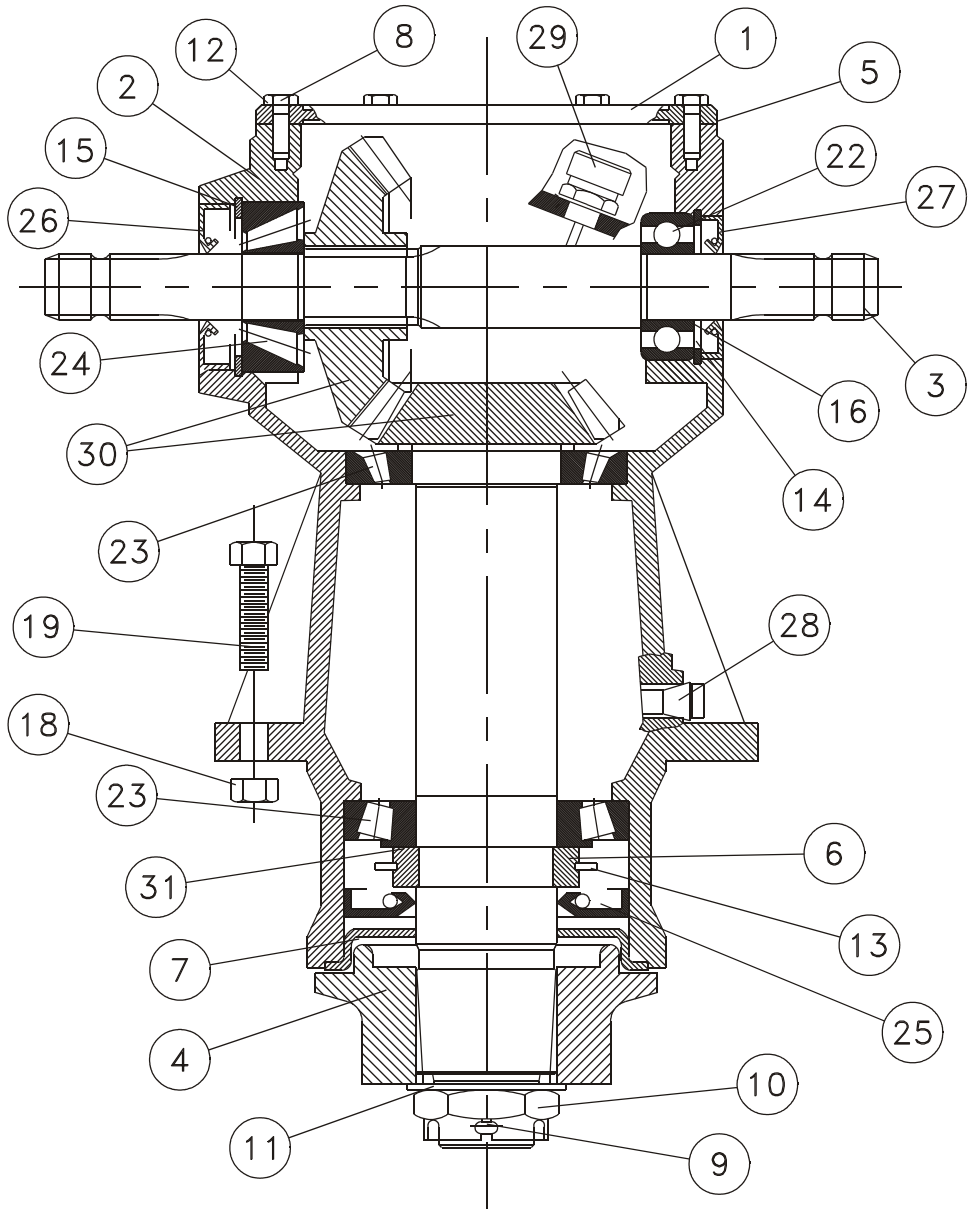
**WHEN ORDERING GEAR BOX PARTS PLEASE SUPPLY
PART NUMBER STAMPED ON GEAR BOX COVER**

RIGHT ANGLE GEARBOX (330-832)

330-832 BP# S3070080007, 1.25:1 ratio, 3070 R2
Location: Center

Ref.	Part No.	Description	Qty.
1	331-801	Oil plug	1
2	331-802	Cover	1
3	331-803	Gasket	1
4	331-804	Ball bearing	1
5	331-805	Cap	1
6	331-806	Snap ring	1
7	331-833	Pinion shaft	1
8	331-809	Housing	1
9	331-810	Split shoulder ring	1
10	331-811	Snap ring	1
11	331-812	Cotter pin	1
12	331-813	Hexagon slotted nut	1
13	331-814	Washer	1
14	331-815	Splined hub	1
15	331-843	Sealing Lid	1
16	331-817	Oil seal	1
17	331-818	Tapered roller bearing	2
18	331-819	Oil drain	1
20	331-841	Tapered roller bearing	1
21	331-822	Snap ring	1
22	331-896	Input shaft, A2	1
23	331-824	Oil seal, A2	1
24	331-847	Crown & Pinion, 1.25:1 ratio	1
25	331-826	Hex screw, M6 x 16	6
26	250-088	Bolt, 5/8 X 2-1/2 UNC	6
27	270-004	Lock nut, 5/8 UNC	6
28	331-835	Locking nut	1
30	331-837	Locking washer	1
31	331-839	Spacer	1
32	331-840	Snap Ring, (optional)	1
33	331-842	Shim Kit, (input shaft)	

RIGHT ANGLE GEARBOX (330-833)



**WHEN ORDERING GEAR BOX PARTS PLEASE SUPPLY
PART NUMBER STAMPED ON GEAR BOX COVER**

RIGHT ANGLE GEARBOX (330-833)

NOTE:

Install offset to the FRONT for CLOCKWISE blade rotation

Install offset to the BACK for COUNTER-CLOCKWISE blade rotation

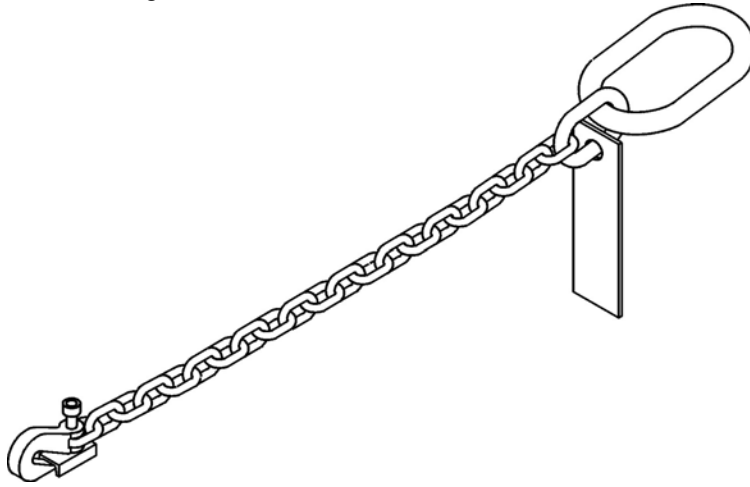
**330-833 BP# S3070125018, 1:1.25 ratio 3070 thru shaft
Location: Inner Wing**

Ref.	Part No.	Description	Qty.
1	331-802	Cover	1
2	331-809	Housing	1
3	331-895	Shaft	1
4	331-815	Splined hub	1
5	331-803	Gasket	1
6	331-810	Split ring	1
7	331-843	Sealing lid	1
8	331-866	Bolt	6
9	331-812	Cotter pin	1
10	331-813	Hexagon slotted nut	1
11	331-814	Washer	1
12	331-867	Washer	6
13	331-811	Snap ring	1
14	331-806	Snap ring	1
15	331-822	Snap ring	1
16	331-842	Shim kit	1
22	331-804	Ball bearing	1
23	331-818	Tapered roller bearing	2
24	331-841	Bearing	1
25	331-817	Oil seal	1
26	331-824	Oil seal	1
27	331-830	Oil seal	1
28	331-819	Oil drain	1
29	331-801	Oil plug vent	1
30	331-845	Pinion shaft & crown gear	1
31	331-848	Shim kit	1

TRANSPORT KITS

Safety Chain (S000-010)

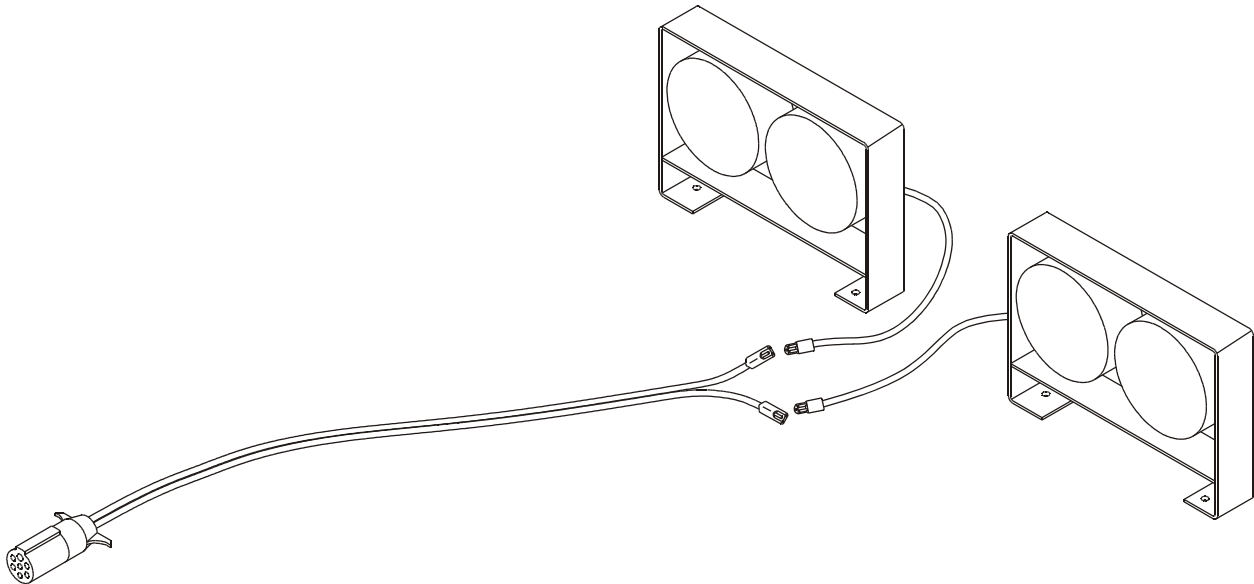
10,100 lbs. capacity, 59" min. length



NOTE: This safety chain is intended as an auxiliary attaching system per ASAE S338.3. The safety chain will help control the rotary cutter should it accidentally separate from the drawbar. **Do not use the safety chain for towing.** Replace the entire chain if any link or end fitting is broken, damaged or stretched.

Transport Light Kit (S000-040)

Includes a 7-pin ag plug, wishbone harness and left and right hand dual lights.



The lights are to be mounted with the red and amber facing to the rear with the outside, or in a vertical installation, with the amber on top. The wiring harness is pre-wired with the 7' leg to attach to the left side light, and the 4' leg to attach to the right side light.

PARTS INDEX

Part Number	Page	Part Number	Page
100-3092	31, 32	210-163	18
100-3672	33, 34	210-167	18
100-3682	33, 34	211-002	18
100-3692	33, 34	221-422	26
101-020	33, 34	221-423	26
101-021	32, 34	221-424	26
101-026W	32	221-425	26
101-065	34	222-003	26
101-066	34	225-109	6, 8
101-067	34	227-001	22
101-082	34	228-011	6, 8
101-083	34	228-012	4
101-084	34	229-008	10-12
101-130	32	229-010	14
101-131	32	232-750	16
101-132	32	232-751	16
101-133	32	232-752	16
101-134	34	232-753	16
101-135	34	232-754	16
101-136	34	232-755	16
101-137	34	232-757	16
101-138	34	250-001	22
101-139	34	250-005	6, 8
101-142	34	250-010K	43
101-243	32, 34	250-018	4, 6, 8, 22
108-005	31	250-019	4, 6, 8
108-0071	31, 33	250-020	22
108-031	31	250-023	31, 32, 34
108-043	31, 33	250-026	6
108-044	33	250-0453	24
111-179	31	250-046	26
111-196	33	250-047	24, 30
111-197	33	250-048	24, 26
111-263	31	250-050	26
111-264	33	250-051	6, 8, 11, 12
111-265	33	250-053	24, 26
13-15	32, 34	250-057	14, 30
150-32	4	250-0571	30
201-005	18	250-059	4, 6, 8, 10, 14, 15, 26, 30
204-003	18	250-060	10, 24
205-004	18	250-061	4, 6, 8, 30
206-004	18	250-063	14, 30
207-015	18	250-070	24, 26
207-016	18	250-077	4
207-019	18	250-084	4
207-020	18	250-0861	43
207-021	18	250-088	4, 6, 8, 48, 50, 52
207-022	18	250-093	4, 10, 22
207-023	18	250-095	4
207-043	18	250-105	10
207-054	18	250-106	11, 12
208-021	18	250-109	10, 15
209-003	18	250-111	14
209-004	18	250-112	11, 12

250-114	11, 12	300-012	4, 10
250-1141	30	302-015	31, 33
250-115	10, 14	302-034	10
250-1241	6, 8	330-830	6, 8, 47, 48
250-125	14	330-831	6, 8, 49, 50
250-126	11, 12	330-832	4, 51, 52
250-201	6, 8	330-833	6, 8, 53, 54
251-0081	22	330-921	4, 45, 46
251-016	27, 28	331-801	48, 50, 52, 54
251-018	20	331-8015	46
251-019	20	331-8016	46
251-020	20	331-802	48, 50, 52, 54
251-151	22	331-803	48, 50, 52, 54
251-201	20	331-804	48, 50, 52, 54
251-203	20	331-805	50, 52
255-001	11, 12	331-806	48, 50, 52, 54
255-005	4, 43	331-809	50, 52, 54
255-009	14, 15, 30	331-810	48, 50, 52, 54
255-013	4, 6, 8, 22	331-811	48, 50, 52, 54
255-015	22	331-812	27, 28, 48, 50, 52, 54
255-020	6, 8	331-813	27, 28, 48, 50, 52, 54
255-021	27, 28	331-814	27, 28, 48, 50, 52, 54
256-001	4, 6, 8, 10-12, 14, 31, 33	331-815	48, 50, 52, 54
256-0011	14	331-817	48, 50, 52, 54
256-003	14	331-818	48, 50, 52, 54
256-006	4, 22	331-819	48, 50, 52, 54
256-011	4, 6, 8, 10-12, 14, 24, 26, 30	331-820	48
256-017	6, 8, 22	331-822	48, 50, 52, 54
256-018	22	331-824	50, 52, 54
256-020	22	331-826	48, 50, 52
256-055	10	331-827	48
256-0712	15	331-828	48
257-003	15, 20	331-830	48, 54
257-006	10-12	331-833	52
257-008	10	331-835	52
257-019	43	331-837	52
257-054	6, 8	331-839	52
257-055	33	331-840	52
257-107	27, 28	331-841	48, 50, 52, 54
257-111	22	331-842	48, 50, 52, 54
262-006	4, 6, 8, 10-12, 14, 33	331-843	48, 50, 52, 54
270-001	10-12, 14, 15	331-844	48, 50
270-0011	30	331-845	54
270-002	6, 8, 11, 12, 14	331-847	52
270-004	4, 6, 8, 10, 22, 48, 50, 52	331-848	48, 50, 54
270-007	4, 6, 8, 10-12, 14, 24, 26, 30	331-866	54
270-008	30	331-867	54
270-017	4, 6, 8, 22, 31-34	331-895	54
270-020	6, 8	331-896	50, 52
270-025	22	331-897	48
271-005	18, 31, 33	331-9001	46
271-008	14, 22	331-9005	46
271-011	15, 27, 28	331-9006	46
271-053	10	331-9007	46
273-001	15	331-9008	46
273-006	4, 6, 8, 10-12, 14, 18	331-9009	46
280-201	22	331-9010	46
300-010	10	331-9011	46

331-9012	46	341-60039	36
331-9013	46	341-6014	42
331-9014	46	341-603	38
331-9015	46	341-603A	38, 40
331-9016	46	341-605	38
331-9017	46	341-610	38
331-9018	46	341-615	38
331-9019	46	341-616	38
331-9020	46	341-617	38
331-9021	46	341-619	38
331-9022	46	341-6202	42
331-9040	46	341-6207	41
331-9041	46	341-621	38
331-9042	46	341-622	38
331-9043	46	341-6228	42
331-9044	46	341-6229	42
340-5505	43	341-6232	42
340-5506	43	341-6234	42
340-6132	38	341-6235	22
340-6142	38	341-6245	22
340-8002	40	341-6246	42
340-8082	36	341-6247	41, 42
340-8092	36	341-6248	41, 42
341-0613	38	341-6251	42
341-0637	38	341-630	41, 42
341-0680	38	341-6302	38
341-0681	38	341-6303	38
341-0685	38	341-6304	38
341-0686	38	341-6305	38
341-0687	38	341-6306	42
341-0688	38	341-6307	42
341-0805	40	341-6312	42
341-0815	40	341-6313	42
341-5501	43	341-6316	42
341-5512A	43	341-6317	42
341-5512B	43	341-6320	38, 42
341-5521	43	341-6321	38, 42
341-5522	43	341-633	38, 40
341-5523	43	341-637	40
341-5524	43	341-642	40
341-5549	43	341-645	40
341-5554	43	341-653	36
341-5555	43	341-705	36
341-5556	43	341-744	40
341-5557	43	341-769	40
341-5558	43	341-776	40
341-5559	43	341-80002	36
341-5560	43	341-80007	36
341-5561	43	341-80008	36
341-5562	43	341-80043	36
341-5563	43	341-80044	36
341-6000	38	341-80045	36
341-6001	38	341-80047	36
341-60014	36	341-80048	36
341-6002	38	341-80049	36
341-60020	36	341-80050	36
341-60021	36	341-80051	36
341-6003	38	341-80052	36

341-80053	36	C000-111	20
341-80054	36	C000-112	20
341-80059	36	C000-120	27, 28
341-80060	36	C000-121	27, 28
341-80064	36	C000-132	14
341-80065	36	C000-201	27, 28
341-80066	36	C000-202	15
341-80068	36	C000-300	15
341-80069	36	C000-301	15
341-80071	36	C000-302	15
341-80074	36	C000-303	15
341-801	41, 42	C000-304	15
341-8017	40	C000-305	15
341-802	36	C301-128	6, 8
341-8024	40	C301-186	14
341-8052	40	C301-189	14
341-8086	36	C310-115	4, 6, 8
341-8101	40	C314-205	22
341-8102	40	C320-128	11, 12
341-8103	40	C320-142	10
341-8104	40	C502-101	4
341-8105	40	C502-107	10
341-8106	40	C502-109	10
341-8107	40	C502-110	10
341-8120	41	C502-113	10
341-8121	41	C502-114	10
341-8122	41	C502-125	11, 12
341-8123	41	C502-126	11
341-8124	41	C502-128	10
341-8125	41	C502-130	10
341-8127	41	C502-132	11, 12
341-8128	40, 41	C502-133	11, 12
341-8129	41	C502-135	6, 8
341-8138	41	C502-136	6
362-010	4, 6, 8, 10-12, 14	C502-137	8
362-012	10	C502-139	4
362-015	14	C502-140	6, 8
362-021	14	C502-141	6, 8
401-016	27, 28	C502-142	6, 8
401-024	27, 28	C502-145	4, 6, 8
401-026	20, 27	C502-146	10
401-027	20, 27	C502-147	4
401-028	20, 27	C502-150	8
401-032	20, 27	C502-154	8
401-033	20	C502-155	6
401-034	20	C502-158	6
401-046	20	C502-160	6, 8
401-047	20	C502-161	6, 8
401-048	20	C502-165	4, 10
401-052	20	C502-171	4
401-206	30	C502-172	4
520-1075	20	C502-173	4
520-1076	20	C502-174	4
586-822	20	C502-178	6, 8
586-823	20	C502-180	4
739-007	10	C502-181	4
755-002	8	C502-182	12
C000-001	31, 33	C502-183	10

C502-184	11, 12	C502-507	24, 26
C502-187	11, 12	C502-508	24, 26
C502-193	33	C502-509	24, 26
C502-194	33	C502-550	25, 26
C502-195	10	C502-551	26
C502-196	10	C502-552	26
C502-201	22	C502-553	26
C502-206	22	C502-554	26
C502-219	22	C502-555	26
C502-220	22	C502-556	26
C502-226	22	C502-557	26
C502-234	22	C502-558	26
C502-236	22	C502-559	26
C502-270	27	C502-570	25, 26
C502-280	28	C502-613	10
C502-284	30	C502-800	13, 14
C502-285	30	C502-801	14
C502-286	30	C502-802	14
C502-291	30	C502-804	14
C502-292	30	C502-805	14
C502-296	30	C502-807	14
C502-297	30	C502-808	14
C502-298	30	C502-809	14
C502-299	30	C502-815	10
C502-301	30	C502-817	14
C502-303	4	C520-117	14
C502-305	30	CS01-109	10
C502-306	30	CS01-130	10
C502-309	30	CS01-133	6, 8, 10
C502-311	30	CS01-138	10-12
C502-312	30	S000-010	14, 55
C502-313	30	S000-040	55
C502-315	6, 8		
C502-317	30		
C502-319	30		
C502-334	4		
C502-335	4		
C502-336	6		
C502-337	8		
C502-412	24		
C502-413	24		
C502-416	24		
C502-417	24		
C502-420	23, 24		
C502-421	24		
C502-422	24		
C502-423	24		
C502-430	23, 24		
C502-431	24		
C502-432	24		
C502-433	24		
C502-500	25, 26		
C502-501	24, 26		
C502-502	24, 26		
C502-503	24, 26		
C502-504	24, 26		
C502-505	24, 26		
C502-506	24, 26		

SCHULTE®