

ROBO-CUTTERBAR
(Medium Duty)
WGC: 4000957

Parts Manual
- March 2016 -

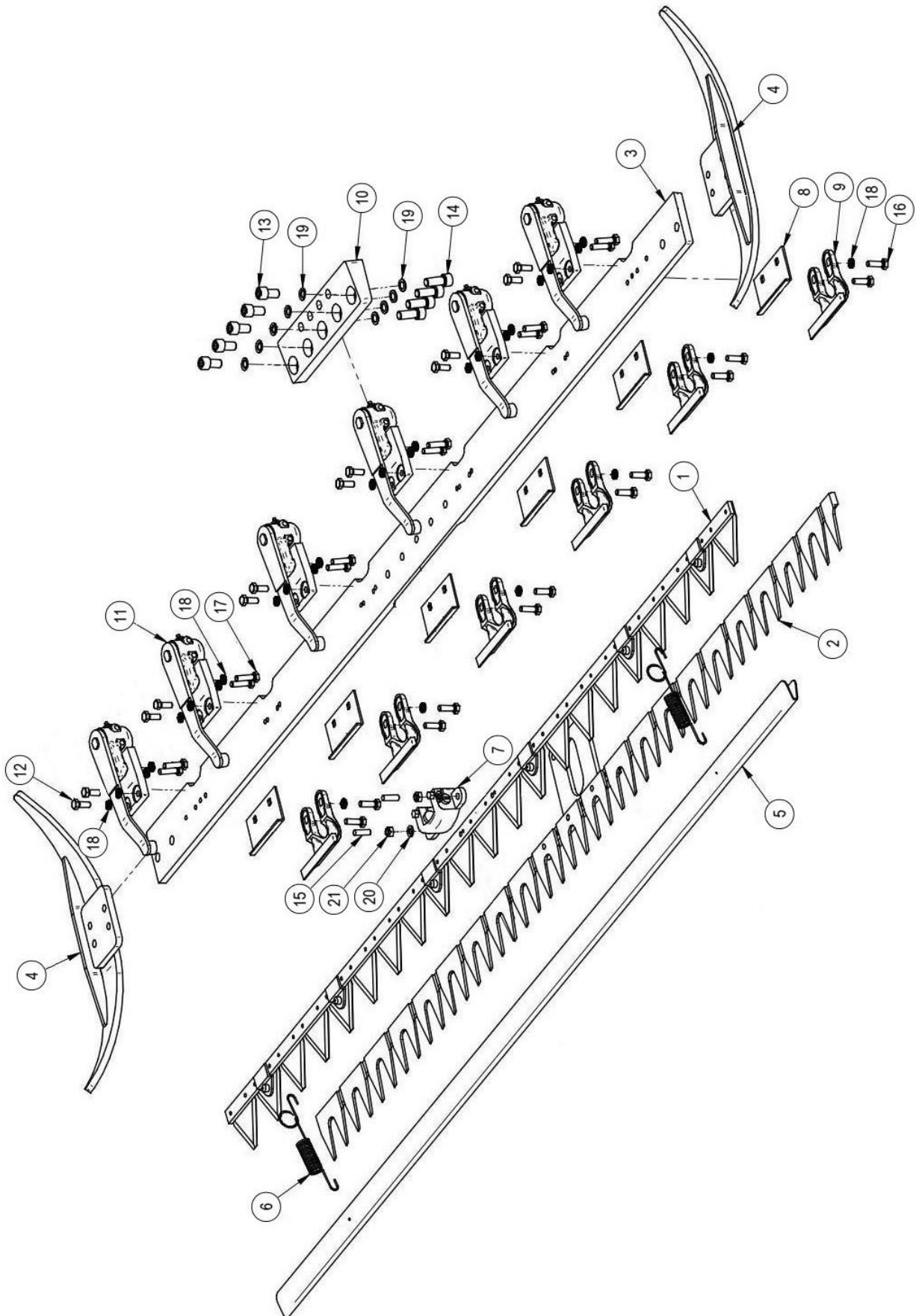
CONTENTS

Cutterbar Assembly	1
Cutterbar Drive Assembly	3
Mounting Assembly	7
Frame Assembly	9
Motor Assembly	10

CUTTERBAR ASSEMBLY – 1.8M (Medium Duty)

Module(s): 4001501

McCONEL



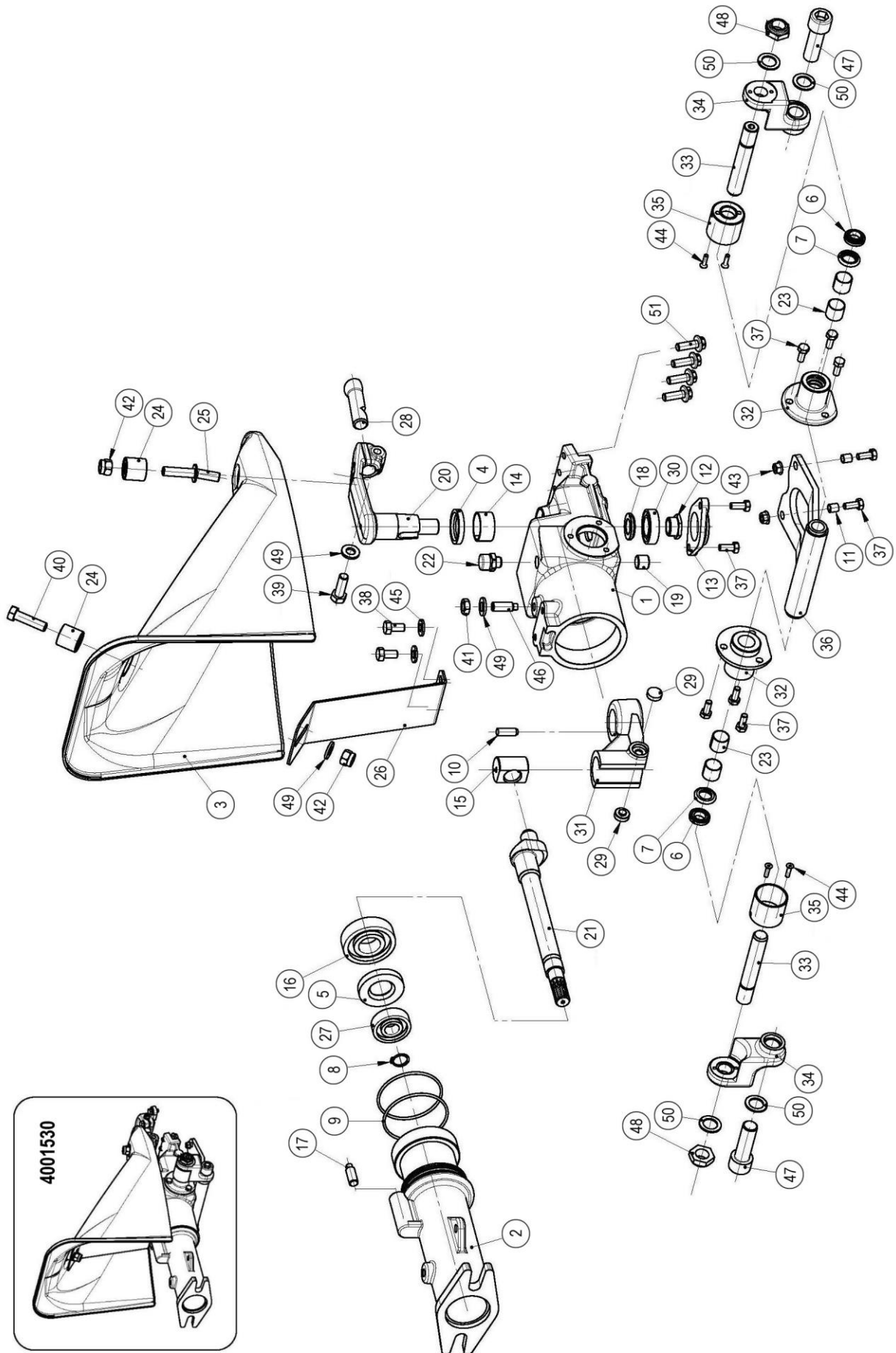
Module(s): 4001501

REF.	QTY.	PART No.	DESCRIPTION
		4001501	CUTTERBAR ASSEMBLY
1	1	4001523	UPPER BLADE
2	1	4001524	LOWER BLADE
3	1	4001525	BASE PLATE
4	2	4001516	SKID
5	1	4001509	BLADE PROTECTOR
6	2	4001510	TENSION SPRING
7	1	4001522	DRIVE HEEL
8	6	4001520	GUIDE PLATE
9	6	4001521	BLADE GUIDE
10	1	4001506	ATTACHMENT PLATE
11	6	4001526	KNIFE CLIP
12	12	7315544	BOLT
13	5	4001531	BOLT
14	4	4001341	BOLT
15	2	4001532	BOLT
16	12	7315579	BOLT
17	12	4001527	BOLT
18	36	4001539	NORD-LOCK WASHER
19	17	4000357	KNURLED WASHER
20	2	7315559	WASHER
21	2	4000381	NUT

CUTTERBAR DRIVE ASSEMBLY

Module(s): 4001530

McCONEL



CUTTERBAR DRIVE ASSEMBLY

McCONNEL

Module(s): 4001530

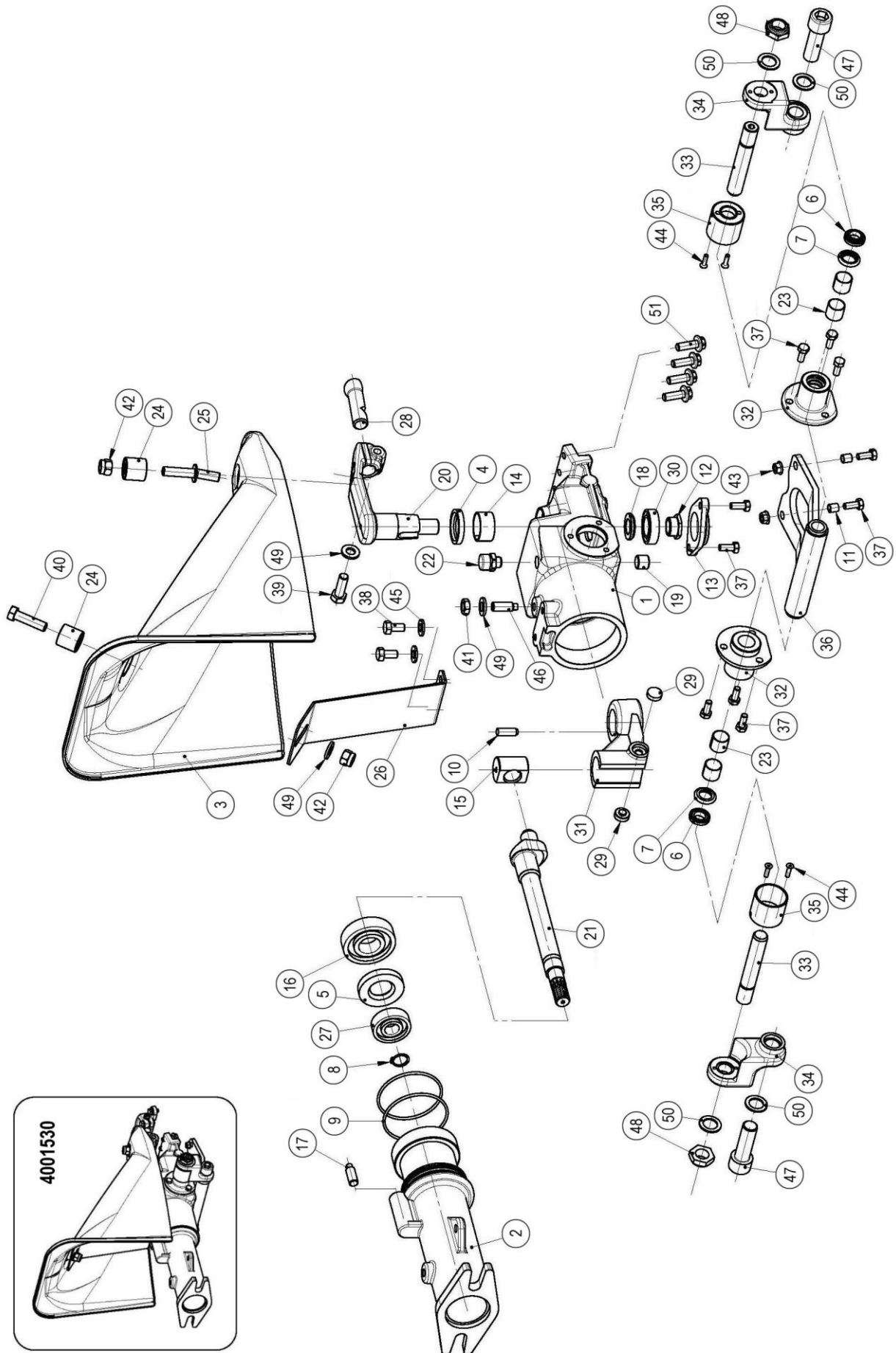
REF.	QTY.	PART No.	DESCRIPTION
		4001530	CUTTERBAR DRIVE UNIT
1	1	4001482	DRIVE HOUSING
2	1	4001466	CONNECTION SLEEVE
3	1	4001477	DRIVE UNIT COWL
4	1	4001454	SEAL RING
5	1	4001455	SEAL RING
6	2	4001456	SEAL RING
7	2	4001457	SEAL RING
8	1	4001458	CIRCLIP
9	2	4001459	O-RING
10	1	4001460	CYLINDRICAL PIN
11	2	4001461	SPRING DOWEL
12	1	4001462	SPECIAL NUT
13	1	4001463	COVER
14	1	4001464	BUSH
15	1	4001465	SLIDING BLOCK
16	1	4001452	BALL BEARING
17	1	4001467	LOCATING PIN
18	1	4001468	SPACER RING
19	1	4001469	PLUG
20	1	4001470	BLADE CONTROL ARM
21	1	4001471	SHAFT
22	1	4001472	BREATHER PLUG
23	4	4001473	BUSH
24	2	4001474	SILENT BLOCK
25	1	4001475	HOOD MOUNTING STUD
26	1	4001476	SUPPORT PLATE
27	1	4001453	BALL BEARING
28	1	4001480	DRIVE PIN
29	2	4001481	INSERT
30	1	4001451	BALL BEARING
31	1	4001483	INTERNAL ARM
32	2	4001484	SIDE SUPPORT
33	2	4001485	TRACTION GUIDE
34	2	4001486	LATERAL JOINT
35	2	4001487	GUIDE SLEEVE
36	1	4001488	KNIFE MOUNTING PLATE
37	10	9313044	SETSCREW
38	2	9313045	SETSCREW
39	1	9313076	SETSCREW
40	1	9213096	BOLT
41	1	4001489	NUT
42	2	9163006	SELF-LOCKING NUT

...continued

CUTTERBAR DRIVE ASSEMBLY

Module(s): 4001530

McCONEL



CUTTERBAR DRIVE ASSEMBLY**McCONNEL**

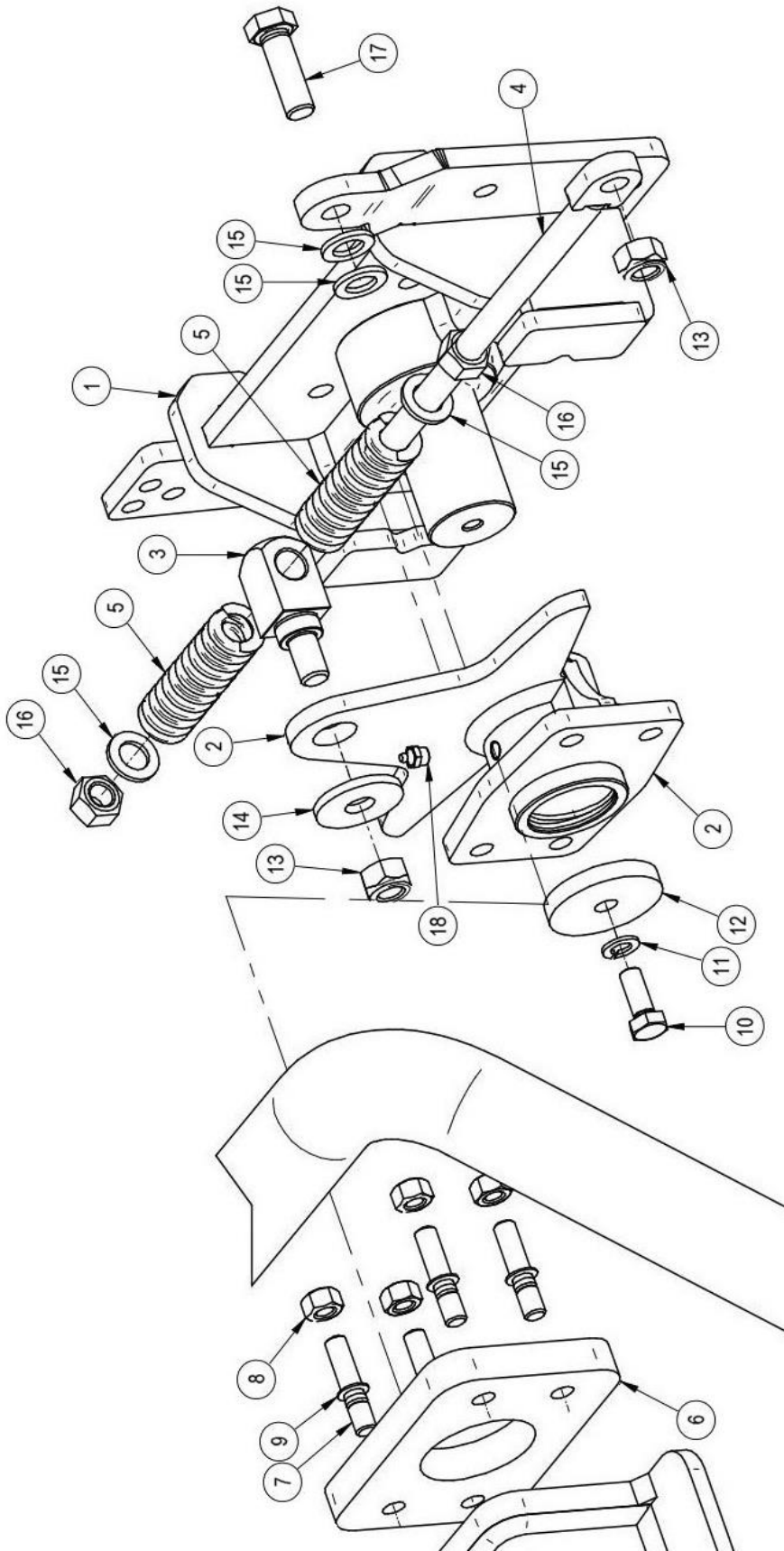
Module(s): 4001530

REF.	QTY.	PART No.	DESCRIPTION
		4001530	CUTTERBAR DRIVE UNIT (Con'd)
43	2	4001490	FLANGED HEX NUT
44	4	4001491	COUNTERSUNK BOLT
45	2	4001492	UNDULATED WASHER
46	1	4001493	HEADLESS BOLT
47	2	4001494	SETSCREW
48	2	4001495	SPECIAL SELF-LOCKING NUT
49	3	4001497	UNDULATED WASHER
50	4	4001498	WASHER
51	4	4001500	FLANGED SETSCREW

CUTTERBAR MOUNTING ASSEMBLY

Module(s): 4001502

McCONEL



CUTTERBAR MOUNTING ASSEMBLY**McCONNEL**

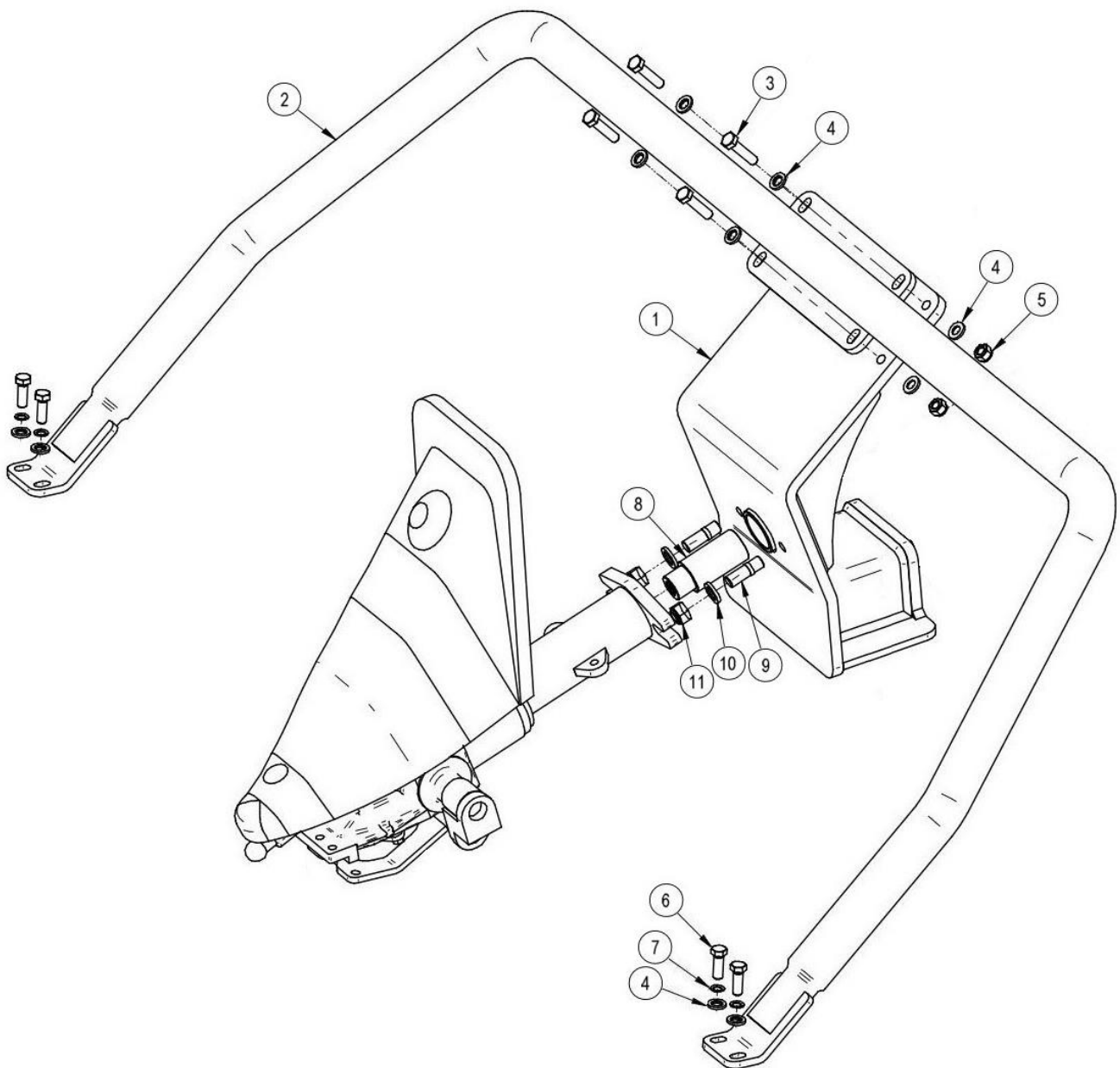
Module(s): 4001502

REF.	QTY.	PART No.	DESCRIPTION
		4001502	MOUNTING ASSEMBLY
1	1	4001540	MOUNTING BRACKET
2	1	4001519	MOUNTING FLANGE
3	1	4001518	SPRING SUPPORT BLOCK
4	1	4001517	SPRING ROD
5	2	4001534	SPRING
6	1	4001505	SPACER PLATE
7	4	4001533	STUD
8	4	4000418	NUT
9	4	4000357	KNURLED WASHER
10	1	4000212	BOLT
11	1	4000760	WASHER
12	1	4000238	WASHER
13	2	4000221	NUT
14	1	4001541	WASHER
15	4	4000253	WASHER
16	2	4000687	NUT
17	1	4001529	BOLT
18	1	4000224	GREASER

CUTTERBAR FRAME ASSEMBLY

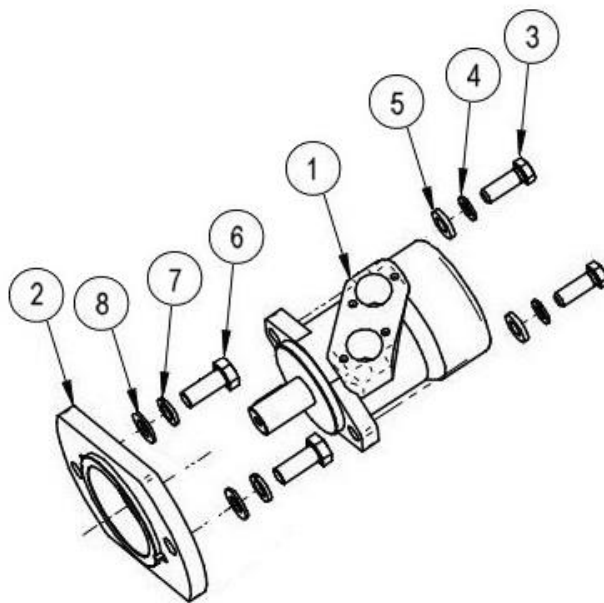
McCONNEL

Module(s): 4001542



REF.	QTY.	PART No.	DESCRIPTION
		4001542	FRAME ASSEMBLY
1	1	4001504	CUTTERBAR MOUNTING
2	1	4001507	PROTECTION FRAME
3	4	4001528	BOLT
4	12	4001535	WASHER
5	4	4000751	NUT
6	4	7316033	BOLT
7	4	4000357	WASHER
8	1	4001508	JOINT SHAFT
9	2	4001512	STUD
10	2	4001537	WASHER
11	2	4001191	NUT

Module(s): 4001550



REF.	QTY.	PART No.	DESCRIPTION
		4001550	MOTOR ASSEMBLY
1	1	4001515	MOTOR
2	1	4001503	ADAPTOR FLANGE
3	6	7316033	BOLT
4	2	4000760	WASHER
5	2	4000753	WASHER
6	2	4001511	BOLT
7	2	4001538	WASHER
8	2	4001536	WASHER



McConnel Limited, Temeside Works, Ludlow, Shropshire SY8 1JL. England.
Telephone: 01584 873131. Facsimile: 01584 876463. www.mcconnel.com