

Publication 117(PM)
December 2007
Part No. 1090850
Revision: 04.1G1f

SWINGTRIM

Swingover Cutterbar Trimmer

Parts Manual





For best performance...

USE ONLY McCONNEL SERVICE PARTS

*To be assured of the latest design improvements purchase your
'Genuine Replacements' from the Original Equipment Manufacturer:*

McCONNEL LIMITED

through your local Dealer or Stockist.

Always quote:

- ***Machine Type***
- ***Serial Number***
- ***Part Number***

*Design Improvements may have altered some of the parts listed in this manual –
The latest part will always be supplied when it is interchangeable with an earlier one.*

Read The Book First

It is important that all operators or fitters that work with this machine have read and fully understood all aspects of this manual before attempting to operate or maintain the machine – the safety of yourself and others should be paramount at all times.

Always Use Genuine Parts

McConnel Genuine Parts are designed and tested specifically for use on our machines - the use of non-genuine parts is not advisable as this can affect both the performance and warranty on the machine.

Parts Ordering

When ordering parts please quote the following information:

- *Machine Model & Specification.*
- *Machine Serial No.*
- *Make & Model of tractor to which the machine is fitted.*
- *Dealer Order Number.*

This information will speed up the ordering process and ensure that the correct parts for the machine are ordered.

Parts can be ordered direct by:

Telephone: 01584 876888

Fax: 01584 876463

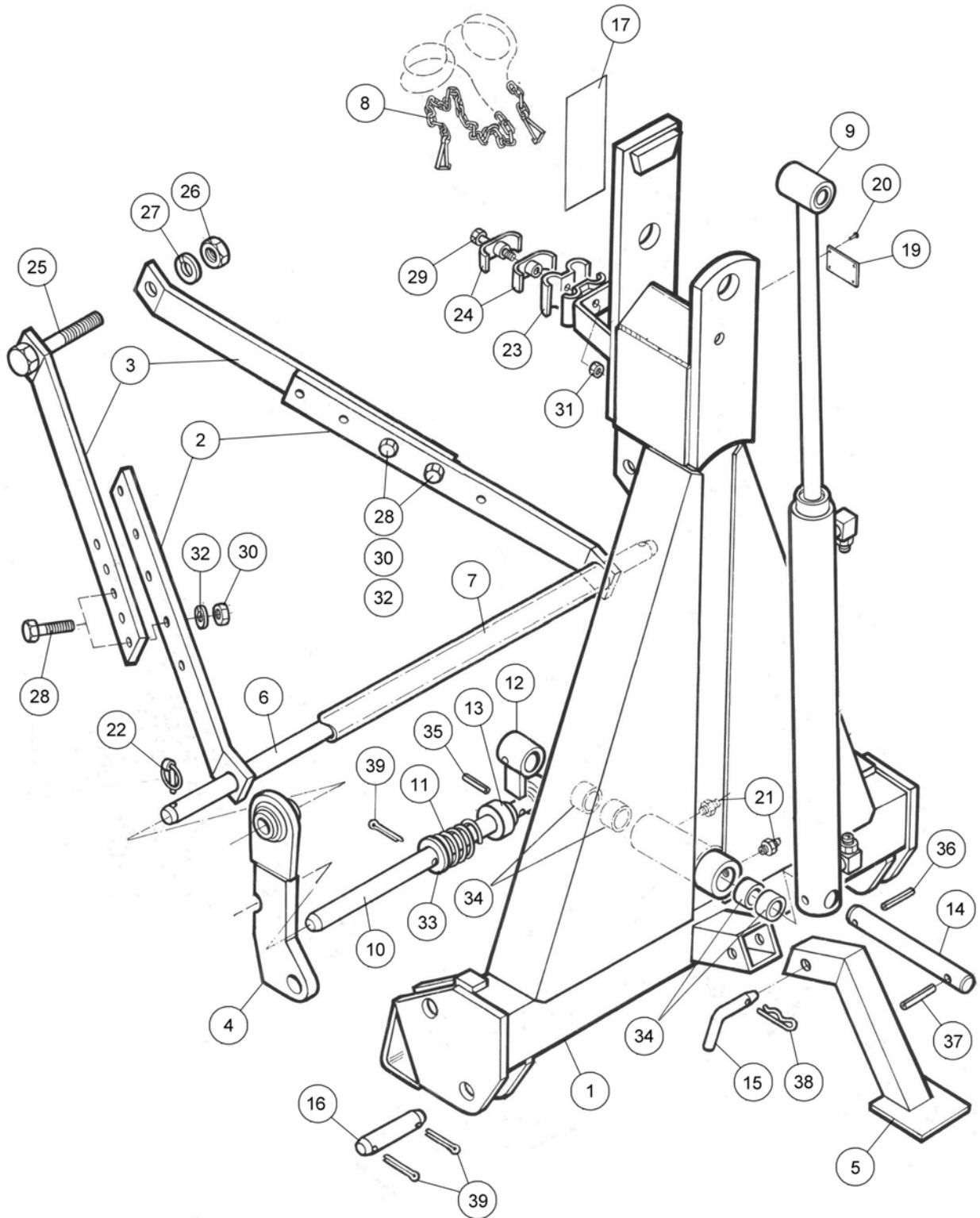
Email: parts@mcconnel.com

Online: www.mcconnel.com

We continually strive to better our products in both performance and value through a continual programme of re-design and testing – where applicable, if an existing part has been superseded by an updated version, the latter will always be supplied.

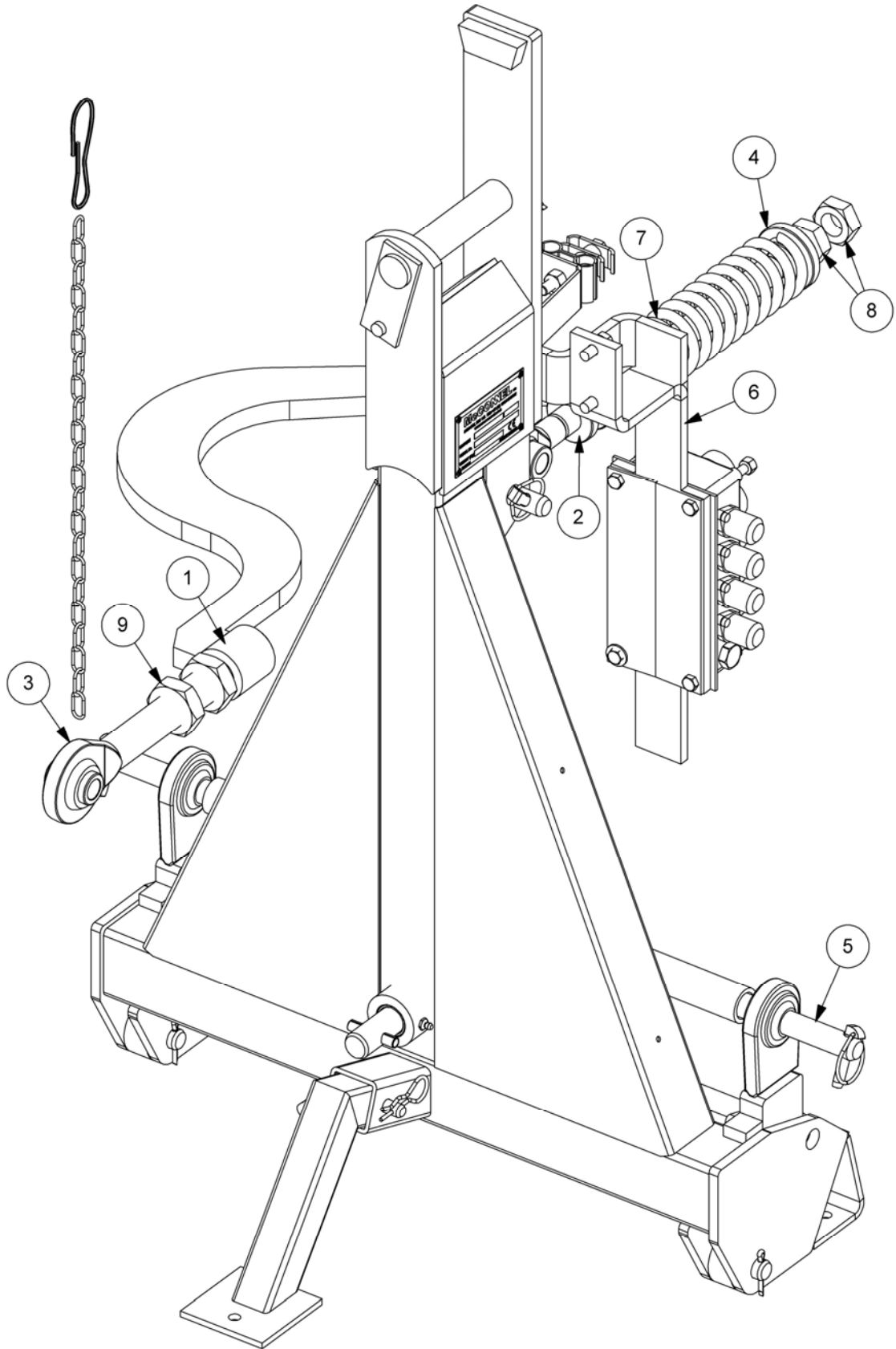
CONTENTS

| | <i>Page No.</i> |
|---|-----------------|
| Mainframe Assembly – <i>Rear Mounted</i> | 2 |
| Front Mounting Kit | 4 |
| Mainframe Assembly – <i>Front Mounted</i> | 6 |
| Main Arm Assembly | 8 |
| Dipper Arm Assembly | 10 |
| Cutterbar Mounting & Drive Assembly | 12 |
| 1.2M Cutterbar | 14 |
| 1.5M Cutterbar | 18 |
| Low Flow Motor (<i>20 L/Min</i>) | 20 |
| High Flow Motor (<i>30 L/Min</i>) | 22 |
| Ram Assemblies – <i>Standard Ø40mm Lift, Reach & Angle Rams</i> | 24 |
| Ram Assembly – <i>Alternative Ø50mm Lift Rams</i> | 26 |
| Cable Control Valve Assembly | 28 |
| Cable Controls | 30 |
| Proportional Control Valve Assembly | 32 |
| Restrictors – <i>Proportional Controls</i> | 34 |
| Proportional Mini XTC Valve Wiring Diagram | 35 |
| Proportional Mini XTC Valve Kit (BSP) | 36 |
| Proportional Control Unit – <i>Mini Single lever</i> | 38 |
| Valve Mounting – <i>Cable Valve</i> | 40 |
| Valve Mounting & Cover – <i>Proportional Valve</i> | 41 |
| Hydraulic Installation – <i>BSP Builds</i> | 42 |
| Hydraulic Installation – <i>JIC Builds</i> | 43 |
| Hydraulic Hose Kit – <i>BSP Builds</i> | 44 |
| Hydraulic Hose Kit – <i>JIC Builds</i> | 46 |
| Hydraulic Hose Installation | 48 |
| Pump and Tank Kit Assemblies – <i>Optional</i> | 50 |



MAINFRAME (REAR MOUNTED)

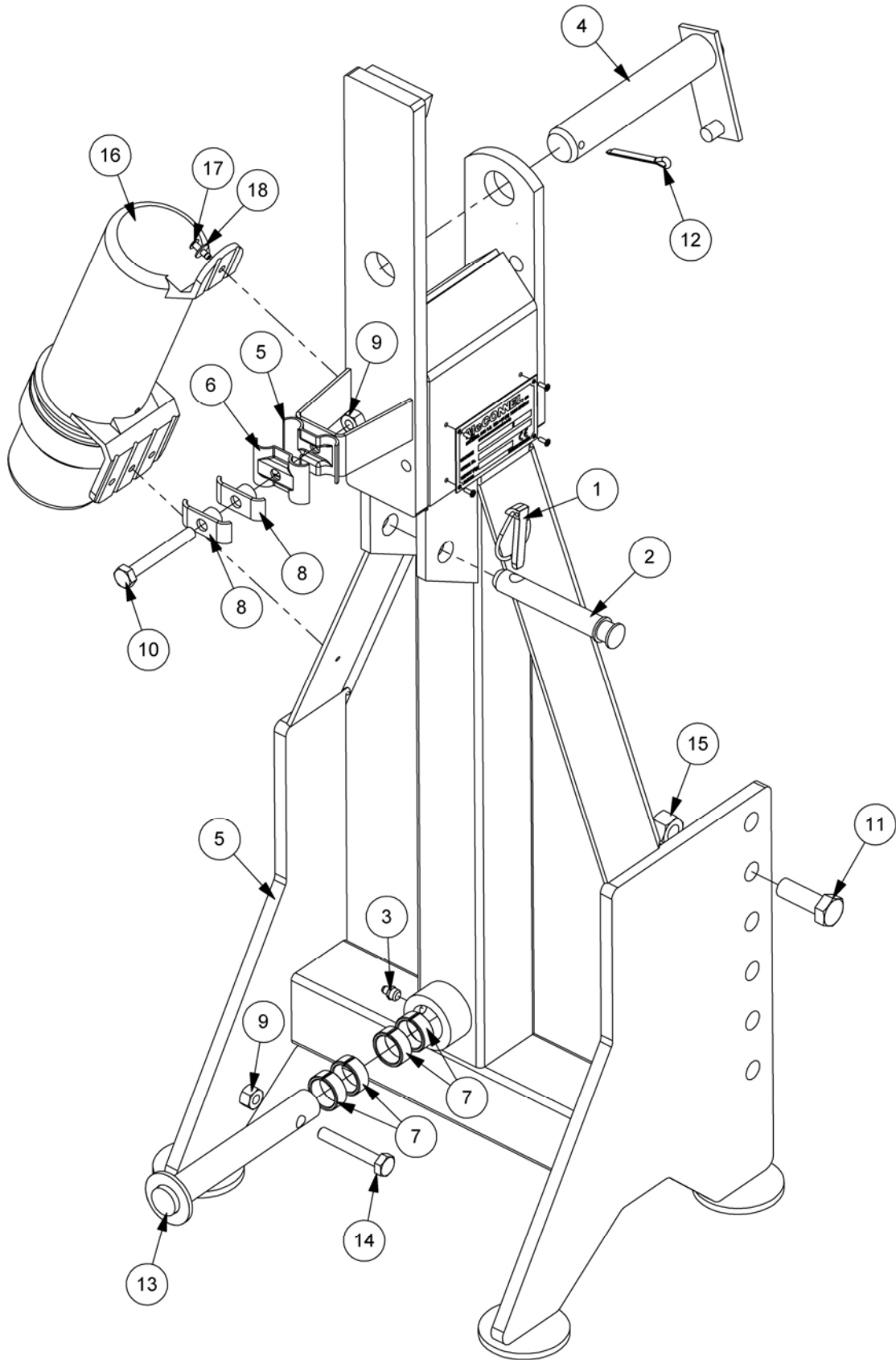
| REF. | QTY. | PART NO. | DESCRIPTION |
|------|------|----------|--------------------------------|
| | | | MAINFRAME ASSEMBLY |
| 1 | 1 | 1090260 | MAIN FRAME |
| 2 | 2 | 1090270 | STABILIZER - LOWER |
| 3 | 2 | 1090269 | STABILIZER - UPPER |
| 4 | 2 | 1090022 | SWING LINK |
| 5 | 1 | 1090263 | STAND LEG |
| 6 | 1 | 1090025 | MOUNTING BAR |
| 7 | 1 | 1090384 | SPACER TUBE |
| 8 | 1 | 1090045 | STOWAGE CHAIN |
| 9 | 1 | 1090305 | LIFT RAM ASSEMBLY - BSP Models |
| | 1 | 1090306 | LIFT RAM ASSEMBLY - JIC Models |
| 10 | 1 | 1090264 | INTERLOCK BAR |
| 11 | 2 | 1090050 | INTERLOCK SPRING |
| 12 | 1 | 1090039 | INTERLOCK LEVER |
| 13 | 2 | 1090024 | INTERLOCK SLEEVE |
| 14 | 1 | 1090044 | PIN - LIFT RAM BASE |
| 15 | 1 | 1090051 | PIN |
| 16 | 2 | 1090023 | PIN |
| 17 | 1 | 1290004 | DECAL - OPERATIONAL SAFETY |
| 18 | 1 | 1290270 | DECAL - CONTROL |
| 19 | 1 | 1090052 | SERIAL No. PLATE |
| 20 | 4 | 7103230 | POP RIVET |
| 21 | 2 | 0901121 | GREASER |
| 22 | 2 | 0431217 | LYNCH PIN |
| 23 | 1 | 6012026 | HOSE CLAMP |
| 24 | 2 | 7114076 | HOSE CLAMP |
| 25 | 1 | 0211327 | BOLT |
| 26 | 1 | 0111007 | NUT |
| 27 | 1 | 0100207 | SPRING WASHER |
| 28 | 4 | 9313087 | SETSCREW |
| 29 | 1 | 9213165 | BOLT |
| 30 | 4 | 9113007 | NUT |
| 31 | 1 | 9143005 | SELF-LOCKING NUT |
| 32 | 4 | 9100207 | SPRING WASHER |
| 33 | 2 | 0100107 | PLAIN WASHER |
| 34 | 4 | 7012037 | BUSH |
| 35 | 1 | 0425525 | SPRING DOWEL |
| 36 | 1 | 0425640 | SPRING DOWEL |
| 37 | 1 | 0428150 | SPRING DOWEL |
| 38 | 1 | 0431104 | SPRING COTTER |
| 39 | 6 | 9501326 | SPLIT PIN |



FRONT MOUNTING KIT

| REF. | QTY. | PART No. | DESCRIPTION |
|------|------|----------------|---------------------------|
| | | 1090259 | FRONT MOUNTING KIT |
| 1 | 1 | 1090342 | TOP LINK ASSEMBLY |
| 2 | 1 | 1090344 | BREAKAWAY ROD |
| 3 | 1 | 1090141 | TOP LINK (BALL END) CAT.1 |
| 4 | 2 | 1090142 | SPRING SUPPORT |
| 5 | 1 | 1090144 | LINKAGE BAR |
| 6 | 1 | 1090146 | VALVE MOUNTING BAR |
| 7 | 1 | 1090147 | BREAKAWAY SPRING |
| 8 | 2 | 0131009 | THIN NUT |
| 9 | 2 | 1090148 | NUT |

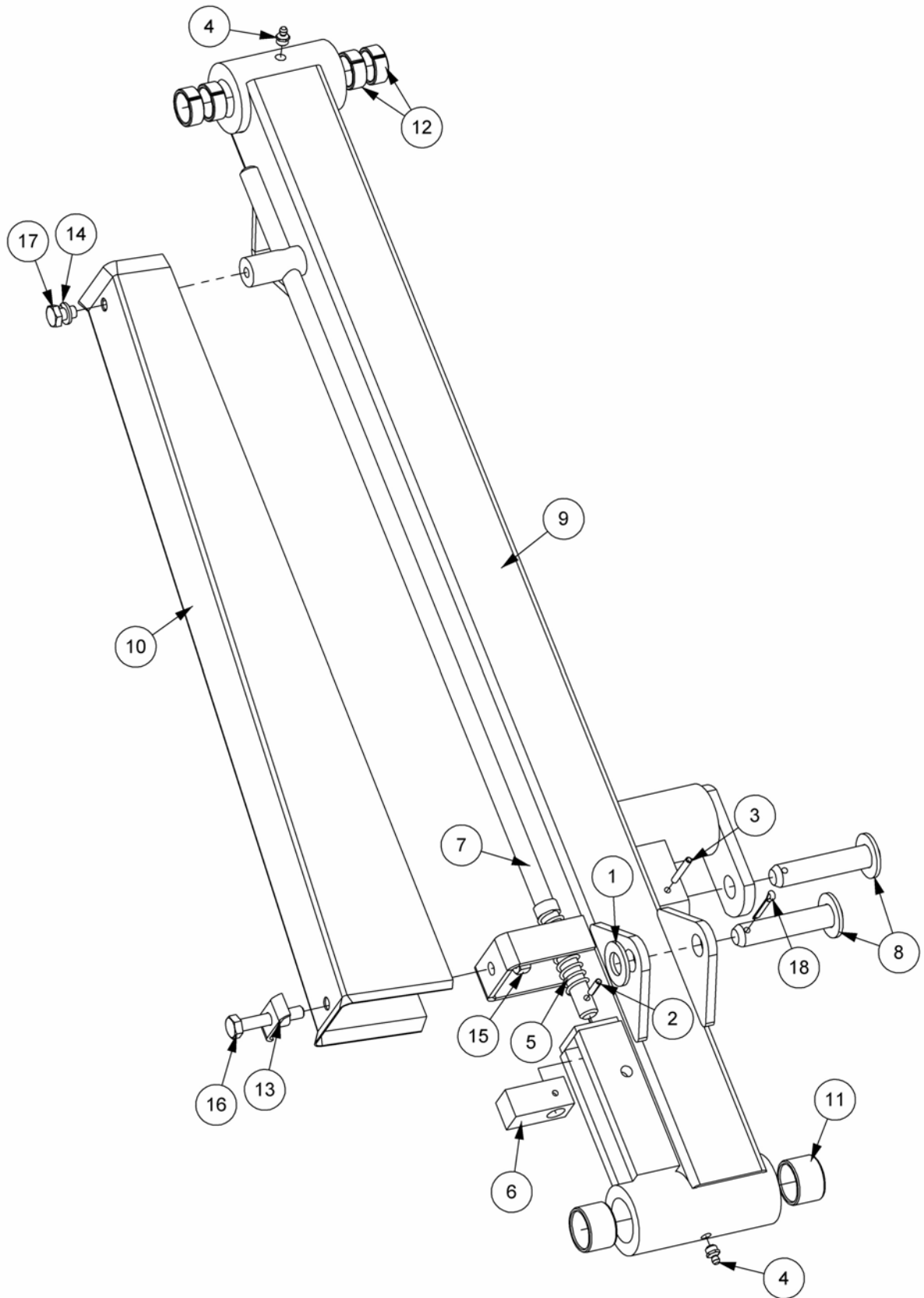
Module:
1090701





| REF. | QTY. | PART NO. | DESCRIPTION |
|------|------|----------------|--------------------------------|
| | | 1090701 | FRONT MOUNTED MAINFRAME |
| 1 | 1 | 0431217 | LINCH PIN |
| 2 | 1 | T1657 | LINKAGE PIN |
| 3 | 2 | 0901121 | GREASE NIPPLE |
| 4 | 1 | 1090042 | PIVOT PIN |
| 5 | 1 | 1090372 | FRONT MOUNT FRAME |
| 6 | 1 | 6012026 | PIPE CLAMP |
| 7 | 4 | 7012037 | TENSION BUSH |
| 8 | 2 | 7114076 | HOSE CLAMP |
| 9 | 2 | 9163005 | NYLOC NUT |
| 10 | 1 | 9213165 | BOLT |
| 11 | 2 | 9313097 | SETSCREW |
| 12 | 1 | 9501507 | SPLIT PIN |
| 13 | 1 | 22904.01 | LIFT RAM PIN |
| 14 | 1 | 9213135 | BOLT |
| 15 | 2 | 9163007 | NYLOC NUT |
| 16 | 1 | 46505.01 | LITERATURE HOLDER |
| 17 | 2 | 21612.02 | POP RIVET |
| 18 | 2 | 22530.01 | RIVET WASHER |

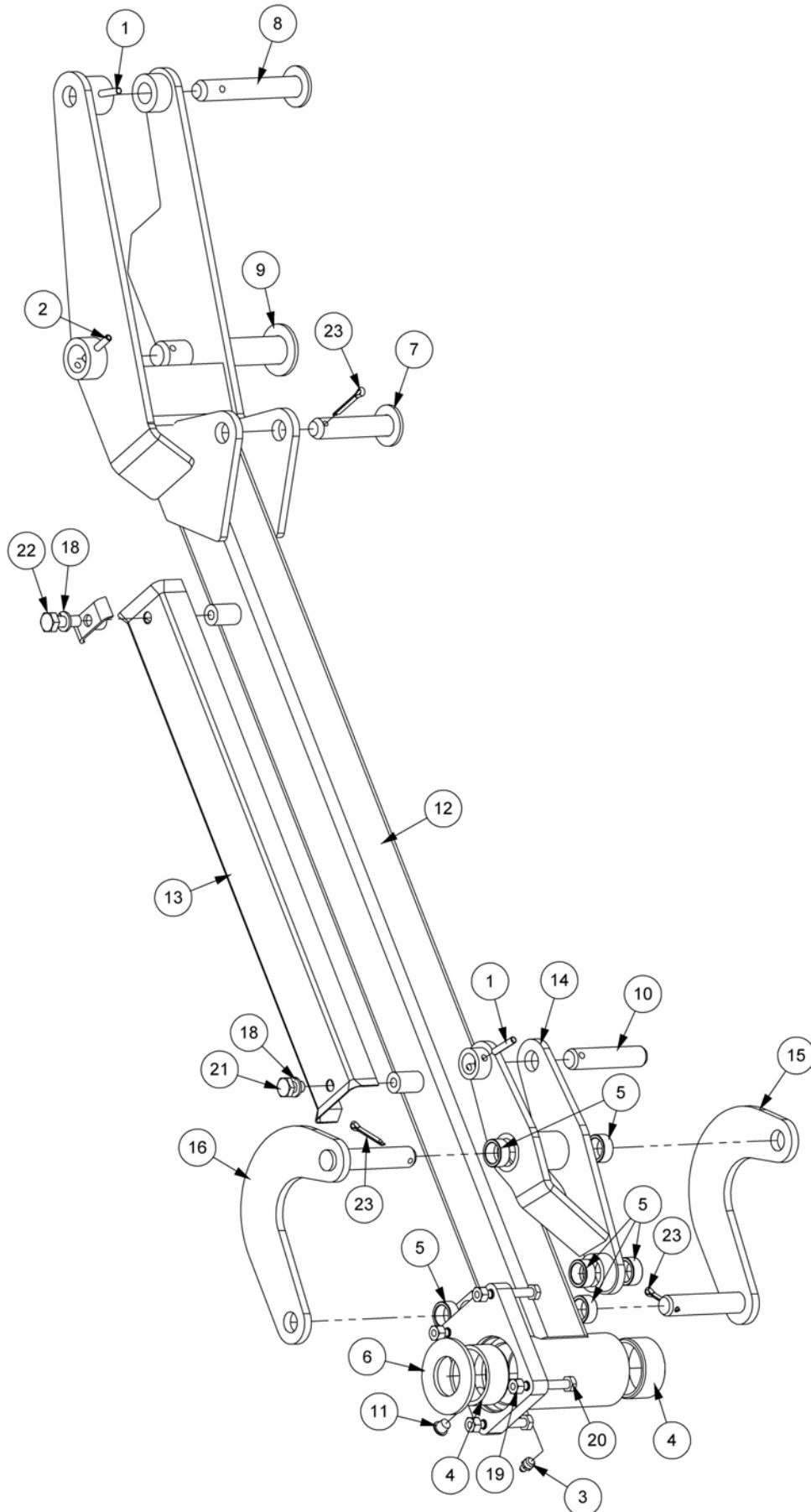
Module:
1090702



MAIN ARM ASSEMBLY

| REF. | QTY. | PART NO. | DESCRIPTION |
|------|------|----------------|--------------------------|
| | | 1090702 | MAIN ARM ASSEMBLY |
| 1 | 1 | 0100107 | FLAT WASHER |
| 2 | 1 | 0425522 | SPRING DOWEL |
| 3 | 1 | 0425540 | SPRING DOWEL |
| 4 | 2 | 0901121 | GREASE NIPPLE |
| 5 | 1 | 1090003 | INTERLOCK SPRING |
| 6 | 1 | 1090040 | INTERLOCK BLOCK |
| 7 | 1 | 1090041 | ARM INTERLOCK BAR |
| 8 | 2 | 1090043 | RAM PIN |
| 9 | 1 | 1090262 | MAIN ARM |
| 10 | 1 | 1090283 | HOSE GUARD |
| 11 | 2 | 6012032 | BUSH (PLASTIC) |
| 12 | 4 | 7012037 | TENSION BUSH |
| 13 | 1 | 7114076 | HOSE CLAMP - LOWER |
| 14 | 1 | 9100205 | SPRING WASHER |
| 15 | 1 | 9143005 | SELF-LOCKING NUT |
| 16 | 1 | 9213125 | BOLT |
| 17 | 1 | 9313035 | SETSCREW |
| 18 | 1 | 9501326 | SPLIT PIN |

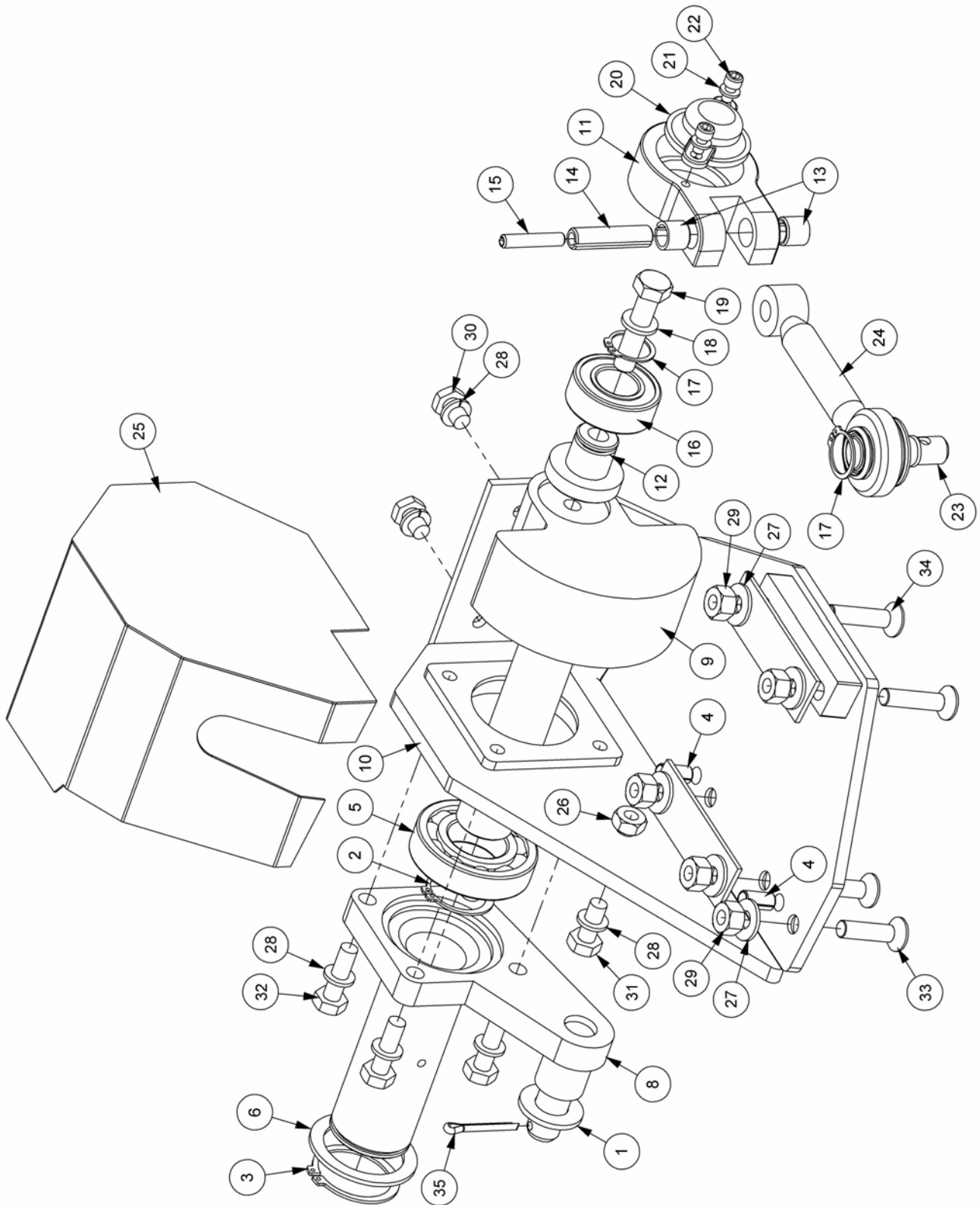
Module:
1090703



DIPPER ARM ASSEMBLY

| REF. | QTY. | PART NO. | DESCRIPTION |
|------|------|----------------|----------------------------|
| | | 1090703 | DIPPER ARM ASSEMBLY |
| 1 | 2 | 0425630 | SPRING DOWEL |
| 2 | 1 | 0425640 | SPRING DOWEL |
| 3 | 1 | 0901121 | GREASE NIPPLE |
| 4 | 2 | 1090001 | HINGE BEARING |
| 5 | 6 | 1090002 | BUSH |
| 6 | 1 | 1090038 | MOTOR LOCATING RING |
| 7 | 1 | 1090043 | RAM PIN |
| 8 | 1 | 1090046 | REACH RAM PIN (ROD END) |
| 9 | 1 | 1090047 | PIVOT PIN |
| 10 | 1 | 1090048 | ANGLE RAM PIN (ROD END) |
| 11 | 1 | 1090103 | PLASTIC TAPERED PLUG |
| 12 | 1 | 1090265 | DIPPER ARM |
| 13 | 1 | 1090282 | HOSE GUARD |
| 14 | 1 | 1090279 | SLAVE LINK |
| 15 | 1 | 1090280 | RADIUS ARM - FRONT |
| 16 | 1 | 1090281 | RADIUS ARM - REAR |
| 17 | 1 | 7114076 | HOSE CLAMP - LOWER |
| 18 | 2 | 9100205 | SPRING WASHER |
| 19 | 4 | 9143004 | SELF-LOCKING NUT |
| 20 | 4 | 9213104 | BOLT |
| 21 | 1 | 9313035 | SETSCREW |
| 22 | 1 | 9313065 | SETSCREW |
| 23 | 3 | 9501326 | SPLIT PIN |

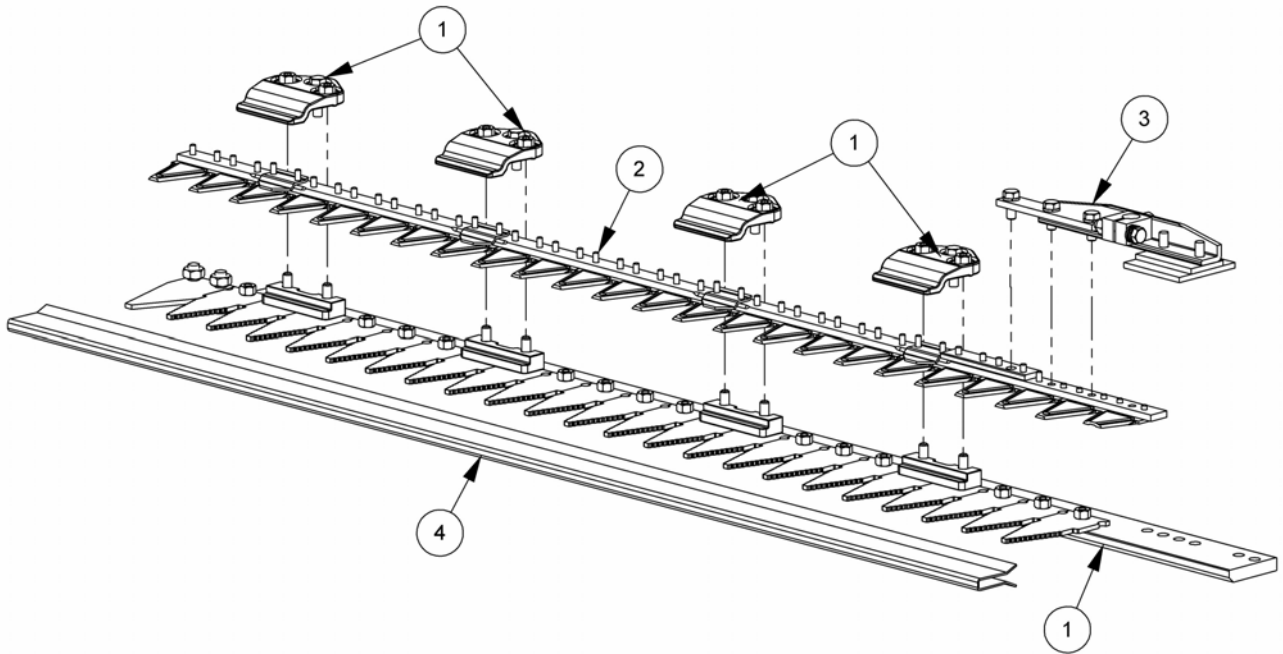
Module:
1090704



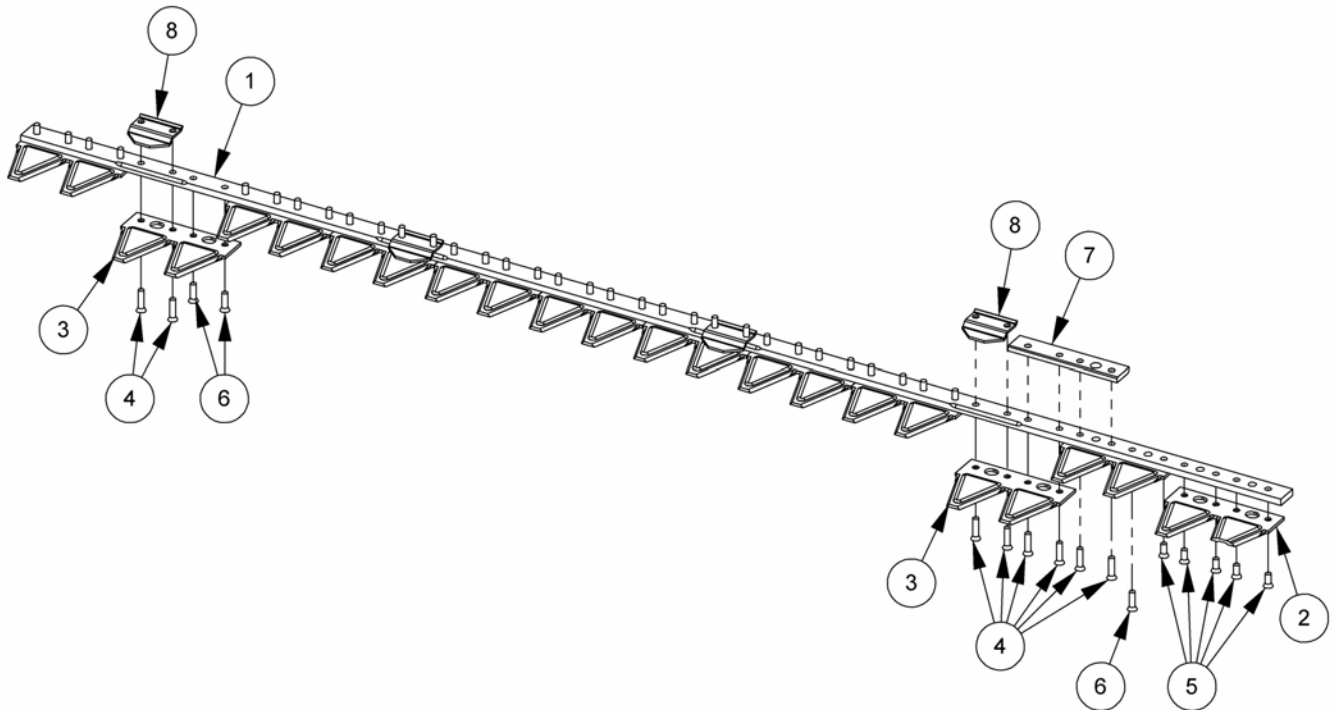
CUTTERBAR MOUNTING

| REF. | QTY. | PART NO. | DESCRIPTION |
|------|------|----------------|------------------------------------|
| | | 1090704 | CUTTERBAR MOUNTING ASSEMBLY |
| 1 | 1 | 0100107 | FLAT WASHER |
| 2 | 1 | 0406235 | EXTERNAL CIRCLIP |
| 3 | 1 | 0406247 | EXTERNAL CIRCLIP |
| 4 | 2 | 0428120 | SPRING DOWEL |
| 5 | 1 | 0600073 | BALL BEARING |
| 6 | 1 | 1090037 | RETAINING WASHER |
| 7 | 2 | 1090102 | SPACER SHIM |
| 8 | 1 | 1090277 | PIVOT TUBE |
| 9 | 1 | 1090278 | CRANKSHAFT |
| 10 | 1 | 1090284 | CUTTERBAR MOUNTING BRACKET |
| | | 1090295 | CONNECTING ROD ASSEMBLY c/o: |
| 11 | 1 | 1090056 | BEARING |
| 12 | 1 | 1090057 | SPIGOT |
| 13 | 2 | 1090059 | BUSH |
| 14 | 1 | 1090060 | SPRING DOWEL |
| 15 | 1 | 1090061 | SPRING DOWEL |
| 16 | 1 | 0600074 | BEARING |
| 17 | 2 | 0401225 | EXTERNAL CIRCLIP |
| 18 | 1 | 9100206 | SPRING WASHER |
| 19 | 1 | 9213116 | BOLT |
| 20 | 1 | 1090054 | BEARING CAP |
| 21 | 2 | 9100203 | SPRING WASHER |
| 22 | 2 | 9343023 | CAPSCREW |
| 23 | 1 | 1090058 | SWIVEL |
| 24 | 1 | 1090055 | CON ROD |
| 25 | 1 | 1090308 | DRIVE COVER |
| 26 | 1 | 9117005 | NUT |
| 27 | 5 | 9100105 | FLAT WASHER |
| 28 | 7 | 9100205 | SPRING WASHER |
| 29 | 5 | 9143005 | SELF-LOCKING NUT |
| 30 | 2 | 9313035 | SETSCREW |
| 31 | 1 | 9313055 | SETSCREW |
| 32 | 4 | 9313075 | SETSCREW |
| 33 | 1 | 9353085 | CAPSCREW |
| 34 | 4 | 9353095 | CAPSCREW |
| 35 | 1 | 9501326 | SPLIT PIN |

Module:
1090290

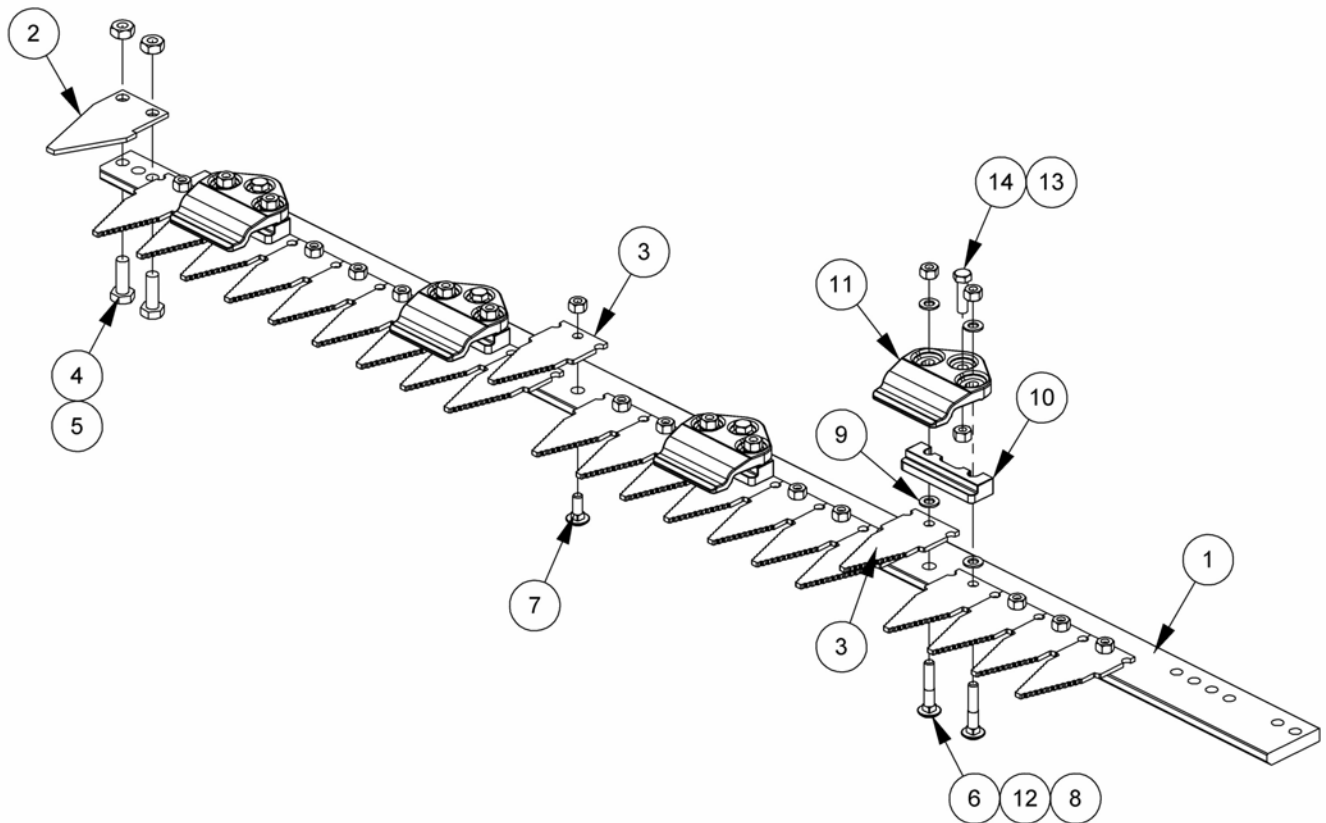


| REF. | QTY. | PART NO. | DESCRIPTION |
|------|------|----------------|------------------------------|
| | | 1090290 | 1.2M CUTTERBAR MODULE |
| 1 | 1 | 1090294 | FINGER ASSEMBLY |
| 2 | 1 | 1090291 | KNIFE ASSEMBLY |
| 3 | 1 | 1090292 | KNIFE HEEL ASSEMBLY |
| 4 | 1 | 1090091 | KNIFE GUARD |



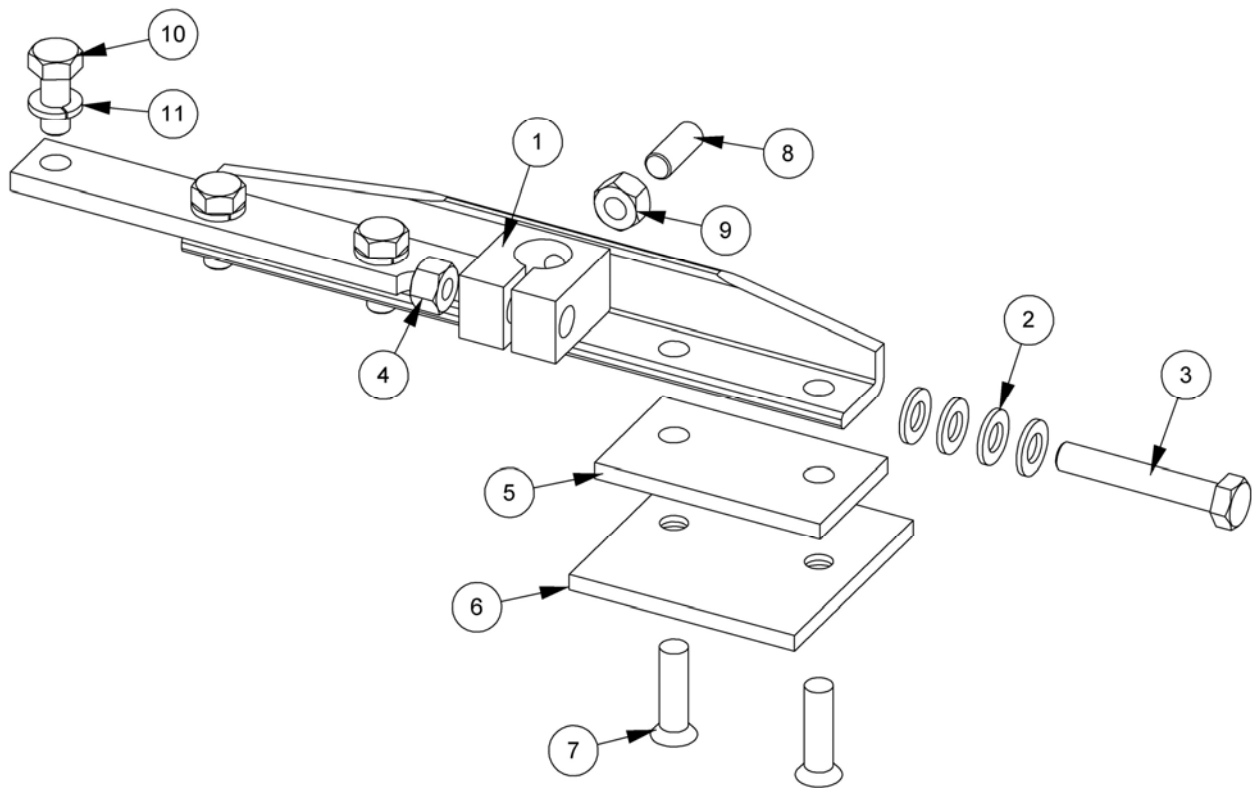
| REF. | QTY. | PART NO. | DESCRIPTION |
|------|------|----------------|-----------------------|
| | | 1090291 | KNIFE ASSEMBLY |
| 1 | 1 | 1090070 | KNIFE BACK |
| 2 | 1 | 1090066 | KNIFE SECTION |
| 3 | 11 | 1090067 | KNIFE SECTION |
| 4 | 12 | 1090064 | RIVET |
| 5 | 5 | 1090062 | RIVET |
| 6 | 31 | 1090063 | RIVET |
| 7 | 1 | 1090069 | REINFORCEMENT |
| 8 | 4 | 1090068 | ABUTMENT PLATE |

Module:
1090294



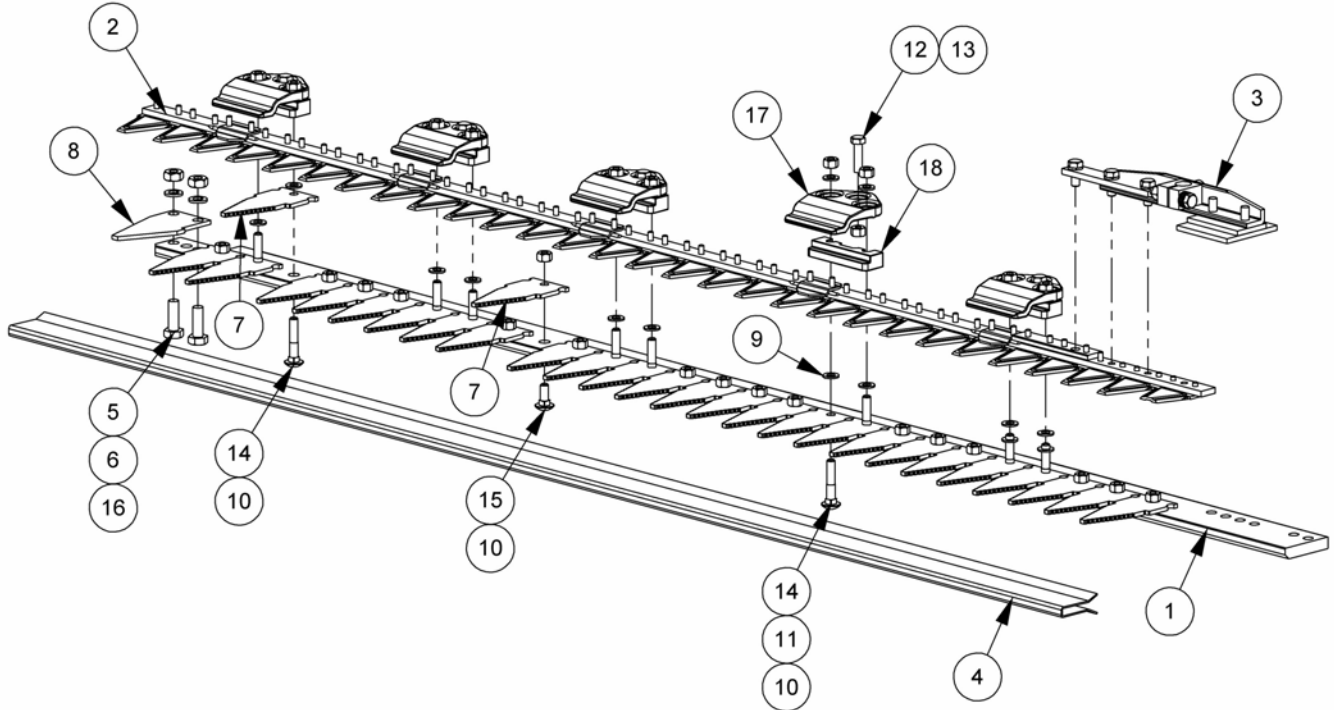
| REF. | QTY. | PART NO. | DESCRIPTION |
|------|------|----------------|------------------------|
| | | 1090294 | FINGER ASSEMBLY |
| 1 | 1 | 1090071 | BAR |
| 2 | 1 | 1090080 | END FINGER |
| 3 | 22 | 1090072 | FINGER |
| 4 | 2 | 9313065 | SETSCREW |
| 5 | 2 | 9113005 | PLAIN NUT |
| 6 | 8 | 1090077 | DOVE BOLT |
| 7 | 14 | 1090073 | DOVE BOLT |
| 8 | 22 | 9113004 | NUT |
| 9 | 8 | 1090078 | WASHER |
| 10 | 4 | 1090075 | ABUTMENT BLOCK |
| 11 | 4 | 1090074 | KNIFE CLIP |
| 12 | 8 | 1090079 | PLAIN WASHER |
| 13 | 4 | 9147004 | SELF-LOCKING NUT |
| 14 | 4 | 9313064 | SETSCREW |

Module:
1090292



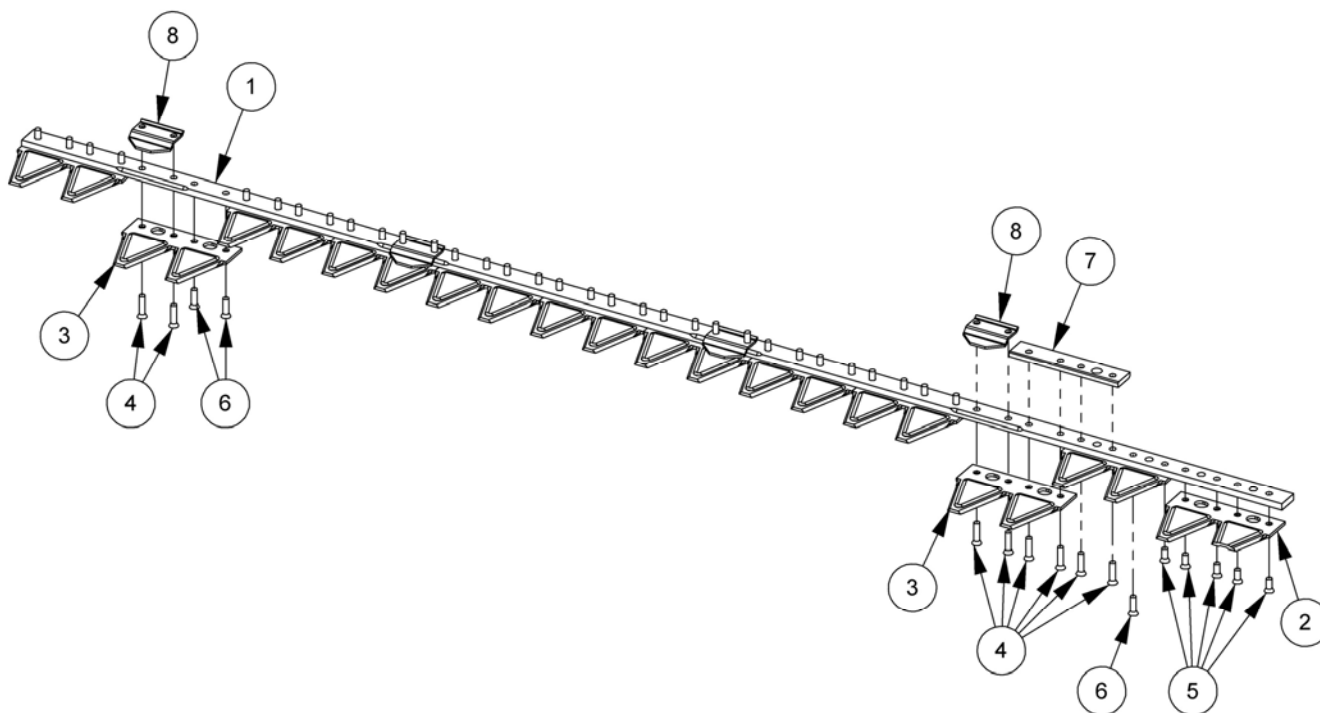
| REF. | QTY. | PART NO. | DESCRIPTION |
|------|------|----------------|----------------------------|
| | | 1090292 | KNIFE HEEL ASSEMBLY |
| 1 | 1 | 1090081 | KNIFE HEEL |
| 2 | 4 | 1090119 | DISC SPRING |
| 3 | 1 | 9213104 | BOLT |
| 4 | 1 | 9143004 | SELF-LOCKING NUT |
| 5 | 1 | 1090083 | WEAR PLATE |
| 6 | 1 | 1090082 | WEAR PLATE |
| 7 | 2 | 1090084 | RIVET |
| 8 | 1 | 9363044 | GRUB SCREW |
| 9 | 1 | 9113004 | NUT |
| 10 | 3 | 9313044 | BOLT |
| 11 | 3 | 9100204 | SPRING WASHER |

Module:
1090326



| REF. | QTY. | PART NO. | DESCRIPTION |
|------|------|----------------|------------------------------|
| | | 1090326 | 1.5M CUTTERBAR MODULE |
| 1 | 1 | 1090151 | BAR |
| 2 | 1 | 1090327 | KNIFE ASSEMBLY |
| 3 | 1 | 1090292 | KNIFE HEEL ASSEMBLY |
| 4 | 1 | 1090152 | KNIFE GUARD |
| 5 | 2 | 9313065 | SETSCREW |
| 6 | 2 | 9100205 | SPRING WASHER |
| 7 | 27 | 1090072 | FINGER |
| 8 | 1 | 1090080 | END FINGER |
| 9 | 10 | 1090078 | WASHER |
| 10 | 27 | 9113004 | NUT |
| 11 | 10 | 1090119 | DISC SPRING |
| 12 | 5 | 9313064 | SETSCREW |
| 13 | 5 | 9147004 | SELF-LOCKING NUT |
| 14 | 10 | 1090077 | DOME BOLT |
| 15 | 17 | 1090073 | DOME BOLT |
| 16 | 2 | 9113005 | PLAIN NUT |
| 17 | 5 | 1090074 | KNIFE CLIP |
| 18 | 5 | 1090075 | ABUTMENT BLOCK |

Module:
1090327



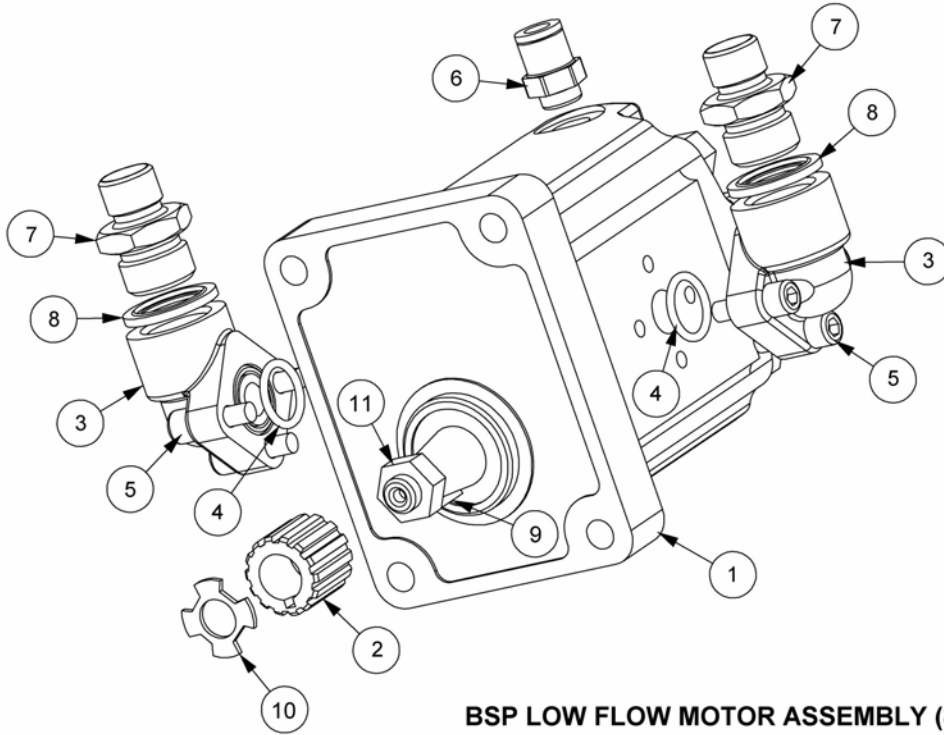
| REF. | QTY. | PART NO. | DESCRIPTION |
|------|------|----------------|-----------------------|
| | | 1090327 | KNIFE ASSEMBLY |
| 1 | 1 | 1090150 | KNIFE BACK |
| 2 | 13 | 1090067 | KNIFE SECTION |
| 3 | 1 | 1090066 | KNIFE SECTION |
| 4 | 39 | 1090063 | RIVET |
| 5 | 14 | 1090064 | RIVET |
| 6 | 5 | 1090062 | RIVET |
| 7 | 1 | 1090069 | REINFORCEMENT |
| 8 | 5 | 1090068 | ABUTMENT PLATE |
| 9 | 1 | 1090149 | KNIFE SECTION |

LOW FLOW MOTOR (20 L/Min)

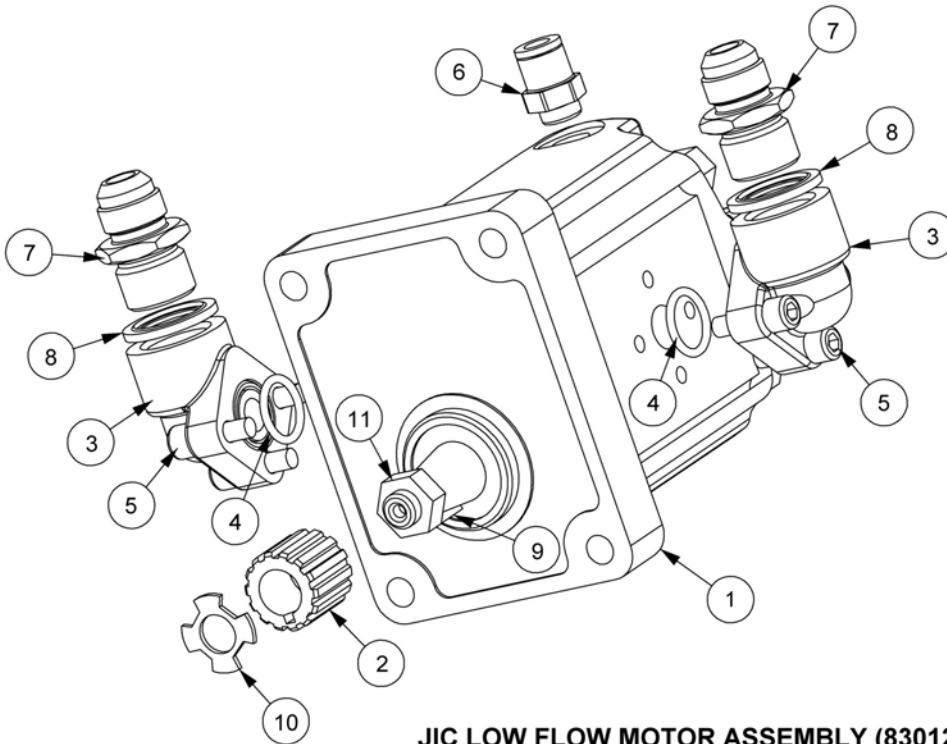
Modules:

8301266 – BSP Build

8301267 – JIC Build



BSP LOW FLOW MOTOR ASSEMBLY (8301266)



JIC LOW FLOW MOTOR ASSEMBLY (8301267)

LOW FLOW MOTOR (20 L/Min)

| REF. | QTY. | PART NO. | DESCRIPTION |
|------|------|----------------|--|
| | | 8301266 | BSP LOW FLOW MOTOR ASSEMBLY (20 L/Min) |
| | | 8301288 | LOW FLOW MOTOR & COUPLINGS - <i>consists of:</i> |
| 1 | 1 | 8301287 | MOTOR |
| 2 | 1 | 1090035 | SPLINED ADAPTOR |
| 3 | 2 | 8301045 | ELBOW KIT (Includes O Ring & 3 x Capscrews) |
| 4 | 2 | 8600112 | O RING |
| 5 | 6 | 9343043 | CAPSCREW |
| 6 | 1 | 8581330 | UNION |
| 7 | 2 | 6000112 | BSP ADAPTOR |
| 8 | 2 | 8650104 | BONDED SEAL |
| 9 | 1 | 8201133 | WOODRUFF KEY |
| 10 | 1 | 8201134 | TAB WASHER |
| 11 | 1 | 8201135 | SPECIAL THIN NUT |

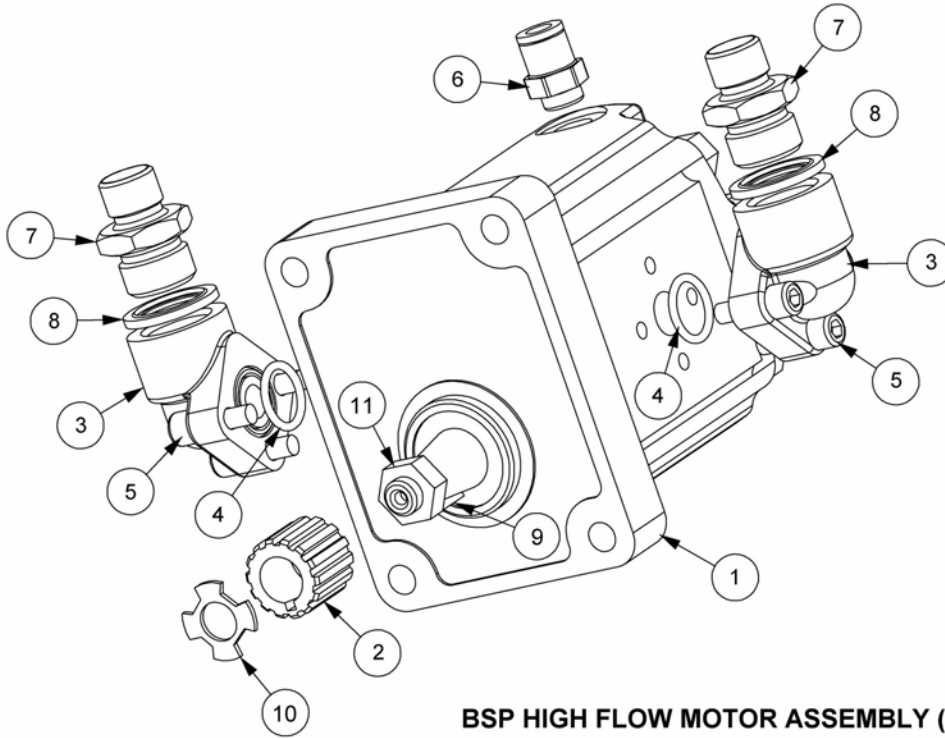
| | | | |
|----|---|----------------|--|
| | | 8301267 | JIC LOW FLOW MOTOR ASSEMBLY (20 L/Min) |
| | 1 | 8301288 | LOW FLOW MOTOR & COUPLINGS - <i>consists of:</i> |
| 1 | 1 | 8301287 | MOTOR |
| 2 | 1 | 1090035 | SPLINED ADAPTOR |
| 3 | 2 | 8301045 | ELBOW KIT (Includes O Ring & 3 x Capscrews) |
| 4 | 2 | 8600112 | O RING |
| 5 | 6 | 9343043 | CAPSCREW |
| 6 | 1 | 8581330 | UNION |
| 7 | 2 | 8120003 | JIC ADAPTOR |
| 8 | 2 | 8650104 | BONDED SEAL |
| 9 | 1 | 8201133 | WOODRUFF KEY |
| 10 | 1 | 8201134 | TAB WASHER |
| 11 | 1 | 8201135 | SPECIAL THIN NUT |

8699243 SEAL KIT for Low Flow Motor

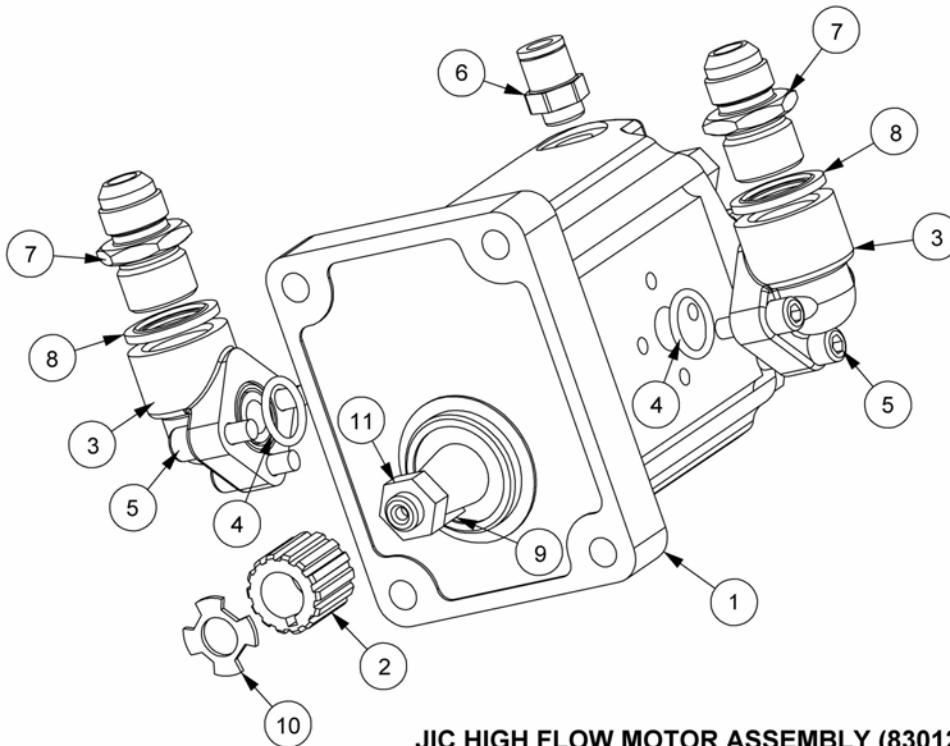
Modules:

8301269 – BSP Build

8301270 – JIC Build



BSP HIGH FLOW MOTOR ASSEMBLY (8301269)



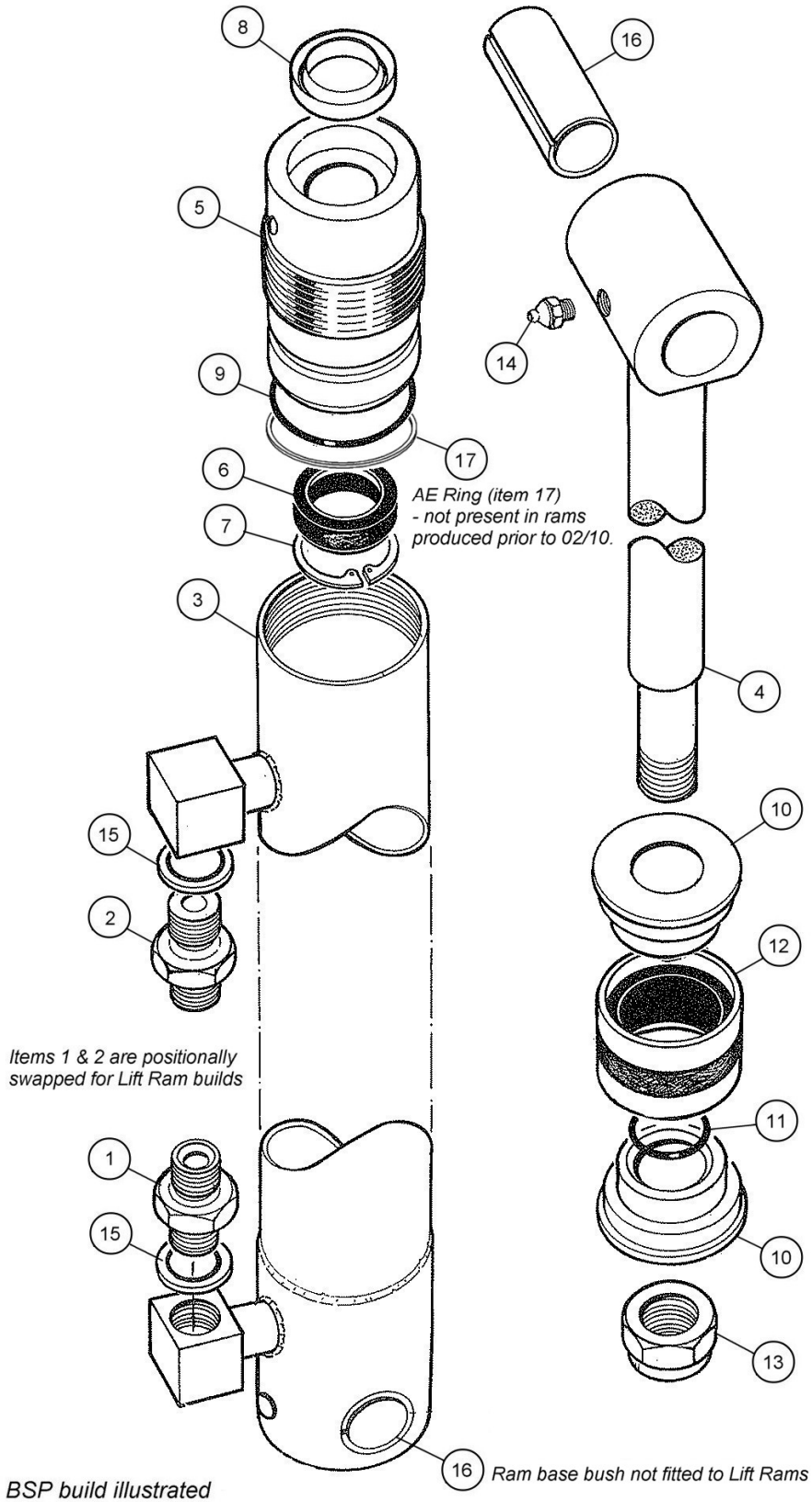
JIC HIGH FLOW MOTOR ASSEMBLY (8301270)

HIGH FLOW MOTOR (30 L/Min)

| REF. | QTY. | PART NO. | DESCRIPTION |
|------|------|----------------|--|
| | | 8301269 | BSP HIGH FLOW MOTOR ASSEMBLY (30 L/Min) |
| 1 | 1 | 8301297 | HIGH FLOW MOTOR |
| 2 | 1 | 1090035 | SPLINED ADAPTOR |
| 3 | 2 | 8301045 | ELBOW KIT (Includes O Ring & 3 x Capscrews) |
| 4 | 2 | 8600112 | O RING |
| 5 | 6 | 9343043 | CAPSCREW |
| 6 | 1 | 8581330 | UNION |
| 7 | 2 | 6000112 | BSP ADAPTOR |
| 8 | 2 | 8650104 | BONDED SEAL |
| 9 | 1 | 8201133 | WOODRUFF KEY |
| 10 | 1 | 8201134 | TAB WASHER |
| 11 | 1 | 8201135 | SPECIAL THIN NUT |
| | | 8301270 | JIC HIGH FLOW MOTOR ASSEMBLY (30 L/Min) |
| 1 | 1 | 8301297 | HIGH FLOW MOTOR |
| 2 | 1 | 1090035 | SPLINED ADAPTOR |
| 3 | 2 | 8301045 | ELBOW KIT (Includes O Ring & 3 x Capscrews) |
| 4 | 2 | 8600112 | O RING |
| 5 | 6 | 9343043 | CAPSCREW |
| 6 | 1 | 8581330 | UNION |
| 7 | 2 | 8120003 | JIC ADAPTOR |
| 8 | 2 | 8650104 | BONDED SEAL |
| 9 | 1 | 8201133 | WOODRUFF KEY |
| 10 | 1 | 8201134 | TAB WASHER |
| 11 | 1 | 8201135 | SPECIAL THIN NUT |
| | | 8699227 | SEAL KIT for High Flow Motor |

Modules:

- 1090300 – Lift BSP Builds
- 1090301 – Lift JIC Build
- 1090302 – Reach & Angle BSP Builds
- 1090303 – Reach & Angle JIC Builds



| REF. | QTY. | PART NO. | DESCRIPTION |
|------|------|----------------|--|
| | | 1090302 | REACH & ANGLE RAMS (Ø 40mm) - BSP Build |
| | | 1090300 | LIFT RAM (Ø 40mm) - BSP Build |
| 1 | 1 | 8581145 | UNION (BSP) |
| 2 | 1 | 8130068 | RESTRICTOR UNION (BSP) |
| 3 | 1 | 1090272 | CYLINDER |
| 4 | 1 | 1090031 | PISTON ROD |
| 5 | 1 | 1090273 | GLAND NUT |
| 6 | 1 | 8629162 | GLAND SEAL |
| 7 | 1 | 0416234 | CIRCLIP |
| 8 | 1 | 8629161 | WIPER RING |
| 9 | 1 | 8600124 | O RING (<i>Rams manufactured 02/10 onwards</i>) |
| | 1 | 8600123 | O RING (<i>Rams manufactured prior to 02/10</i>) |
| 10 | 1 | 1090034 | PISTON |
| 11 | 1 | 8600112 | O RING |
| 12 | 1 | 8629160 | PISTON SEAL |
| 13 | 1 | 0141007 | SELF-LOCKING NUT |
| 14 | 1 | 0901121 | GREASER |
| 15 | 2 | 8650103 | BONDED SEAL |
| 16 | 2 | 1130002 | BUSH - <i>Qty 1 on Lift Rams</i> |
| 17 | 1 | 8609124 | AE RING (<i>Rams manufactured 02/10 onwards</i>) <i>AE Ring 8609124 not fitted to rams prior to 02/10</i> |

8699202 SEAL KIT

| REF. | QTY. | PART NO. | DESCRIPTION |
|------|------|----------------|--|
| | | 1090303 | REACH & ANGLE RAMS (Ø 40mm) - JIC Build |
| | | 1090301 | LIFT RAM (Ø 40mm) - JIC Build |
| 1 | 1 | 08.955.06 | ADAPTOR (JIC) |
| 2 | 1 | 8124126 | RESTRICTOR UNION (JIC) |
| 3 | 1 | 1090272 | CYLINDER |
| 4 | 1 | 1090031 | PISTON ROD |
| 5 | 1 | 1090273 | GLAND NUT |
| 6 | 1 | 8629162 | GLAND SEAL |
| 7 | 1 | 0416234 | CIRCLIP |
| 8 | 1 | 8629161 | WIPER RING |
| 9 | 1 | 8600124 | O RING (<i>Rams manufactured 02/10 onwards</i>) |
| | 1 | 8600123 | O RING (<i>Rams manufactured prior to 02/10</i>) |
| 10 | 1 | 1090034 | PISTON |
| 11 | 1 | 8600112 | O RING |
| 12 | 1 | 8629160 | PISTON SEAL |
| 13 | 1 | 0141007 | SELF-LOCKING NUT |
| 14 | 1 | 0901121 | GREASER |
| 15 | 2 | 8650103 | BONDED SEAL |
| 16 | 2 | 1130002 | BUSH - <i>Qty 1 on Lift Rams</i> |
| 17 | 1 | 8609124 | AE RING (<i>Rams manufactured 02/10 onwards</i>) <i>AE Ring 8609124 not fitted to rams prior to 02/10</i> |

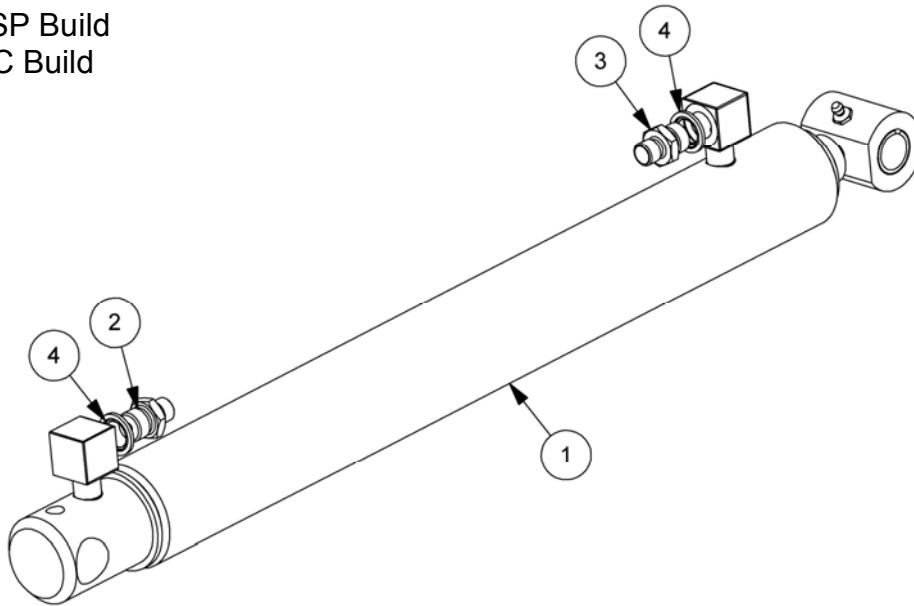
8699202 SEAL KIT

NOTE: On Ø40mm Lift Ram assemblies 1090300 & 1090301 items 1 & 2 are positionally reversed and item 16 not applicable at ram base. Items 3 - 15 are common to all rams listed on this page.

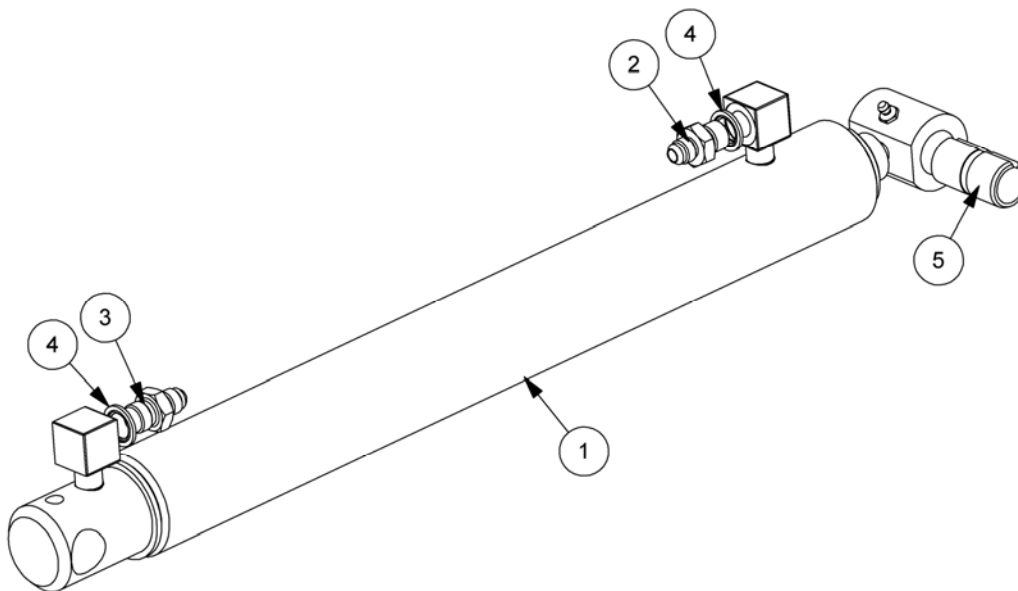
Modules:

1090305 – BSP Build

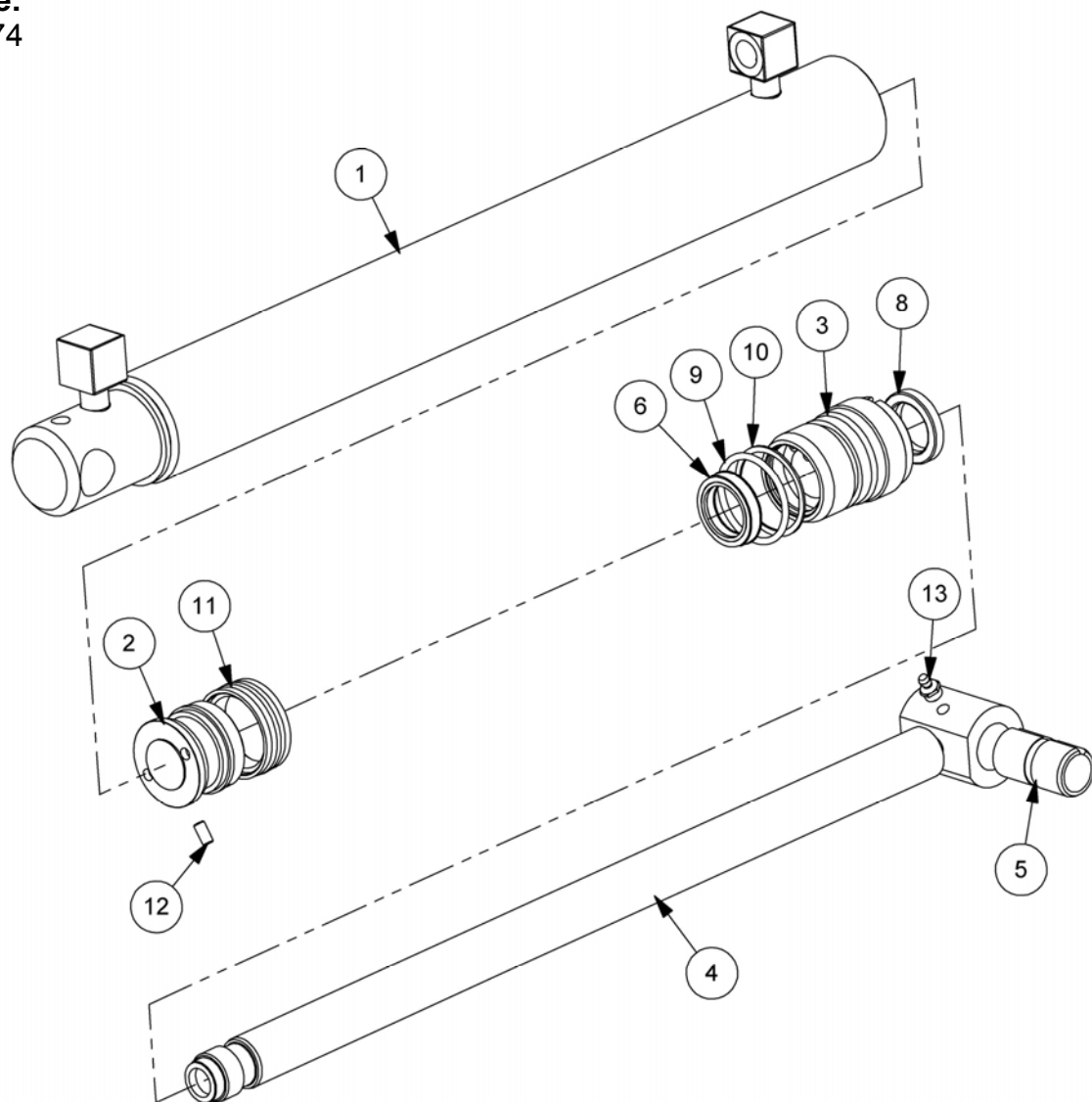
1090306 – JIC Build



| REF. | QTY. | PART NO. | DESCRIPTION |
|------|------|----------------|--|
| | | 1090305 | LIFT RAM ASSEMBLY (Ø50mm) - BSP Build |
| 1 | 1 | 1090274 | LIFT RAM ASSEMBLY - Ø50 BORE |
| 2 | 1 | 8581145 | ADAPTOR |
| 3 | 1 | 8130068 | RESTRICTOR |
| 4 | 2 | 8650103 | BONDED SEAL |
| | | 8699188 | SEAL KIT |



| REF. | QTY. | PART NO. | DESCRIPTION |
|------|------|----------------|--|
| | | 1090306 | LIFT RAM ASSEMBLY (Ø50mm) - JIC Build |
| 1 | 1 | 1090274 | BASIC RAM ASSEMBLY |
| 2 | 1 | 08.955.06 | ADAPTOR (JIC) |
| 3 | 1 | 8124116 | ADAPTOR RESTRICTOR (JIC) |
| 4 | 2 | 8650103 | BONDED SEAL |
| | | 8699188 | SEAL KIT |

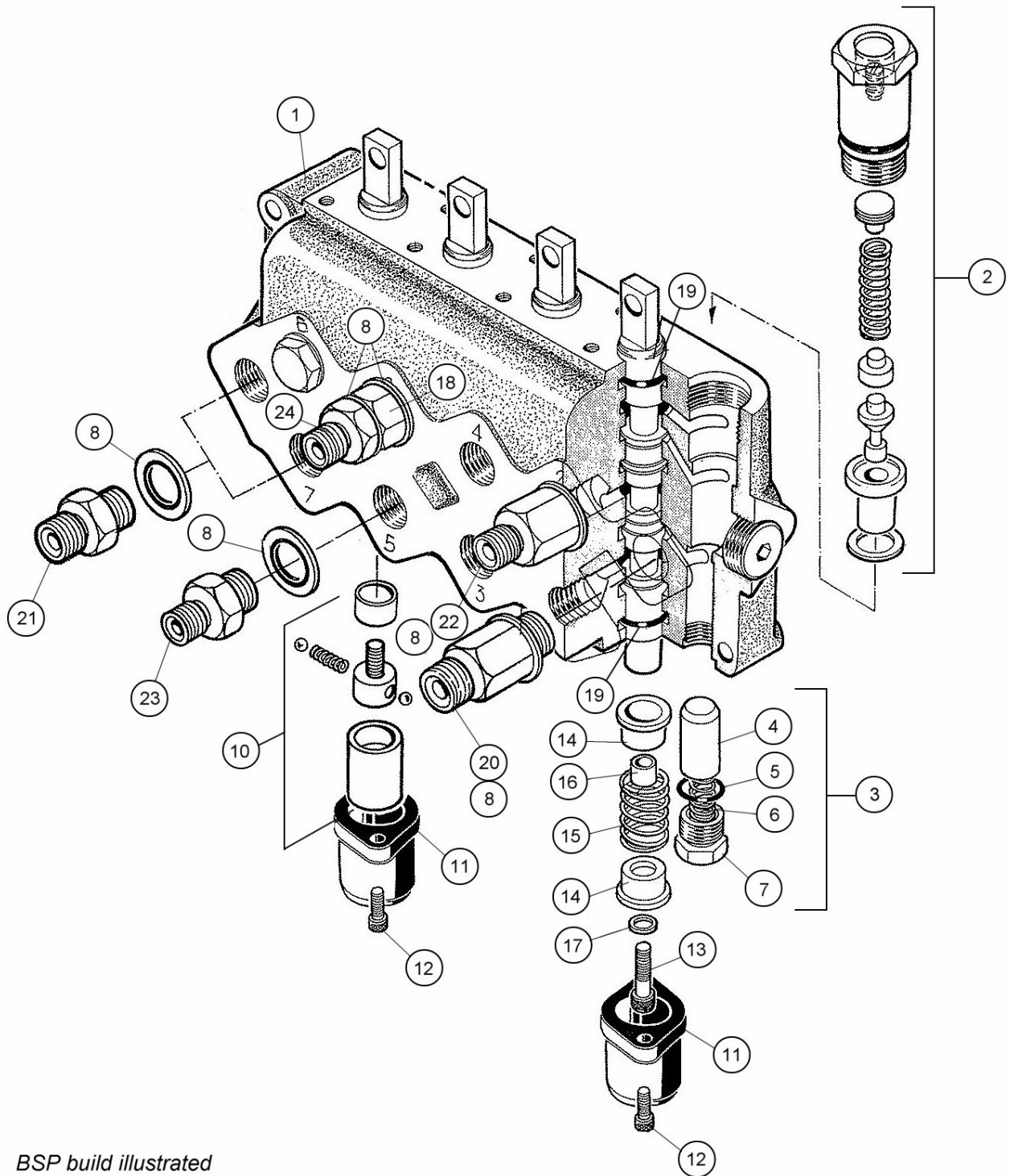
BASIC Ø50mm RAM ASSEMBLY
Module:
 1090274


| REF. | QTY. | PART NO. | DESCRIPTION |
|------|------|----------------|-----------------------------------|
| | | 1090274 | BASIC RAM ASSEMBLY (Ø50mm) |
| 1 | 1 | 1090275 | RAM BARREL |
| 2 | 1 | 7135008 | PISTON |
| 3 | 1 | 7135291 | GLAND HOUSING |
| 4 | 1 | 1090122 | PISTON ROD |
| 5 | 1 | 1130002 | BUSH |
| 6 | 1 | 8629148 | GLAND SEAL |
| 7 | 1 | 0416240 | INTERNAL CIRCLIP |
| 8 | 1 | 8629149 | SCRAPER RING |
| 9 | 1 | 8600302 | O RING |
| 10 | 1 | 8609302 | AE RING |
| 11 | 1 | 8638788 | PISTON SEAL |
| 12 | 1 | 9363023 | GRUB SCREW |
| 13 | 1 | 0901121 | GREASE NIPPLE |
| | | 8699188 | SEAL KIT |

Modules:

8130358 – BSP build

8130359 – JIC build



BSP build illustrated

CABLE CONTROL VALVE

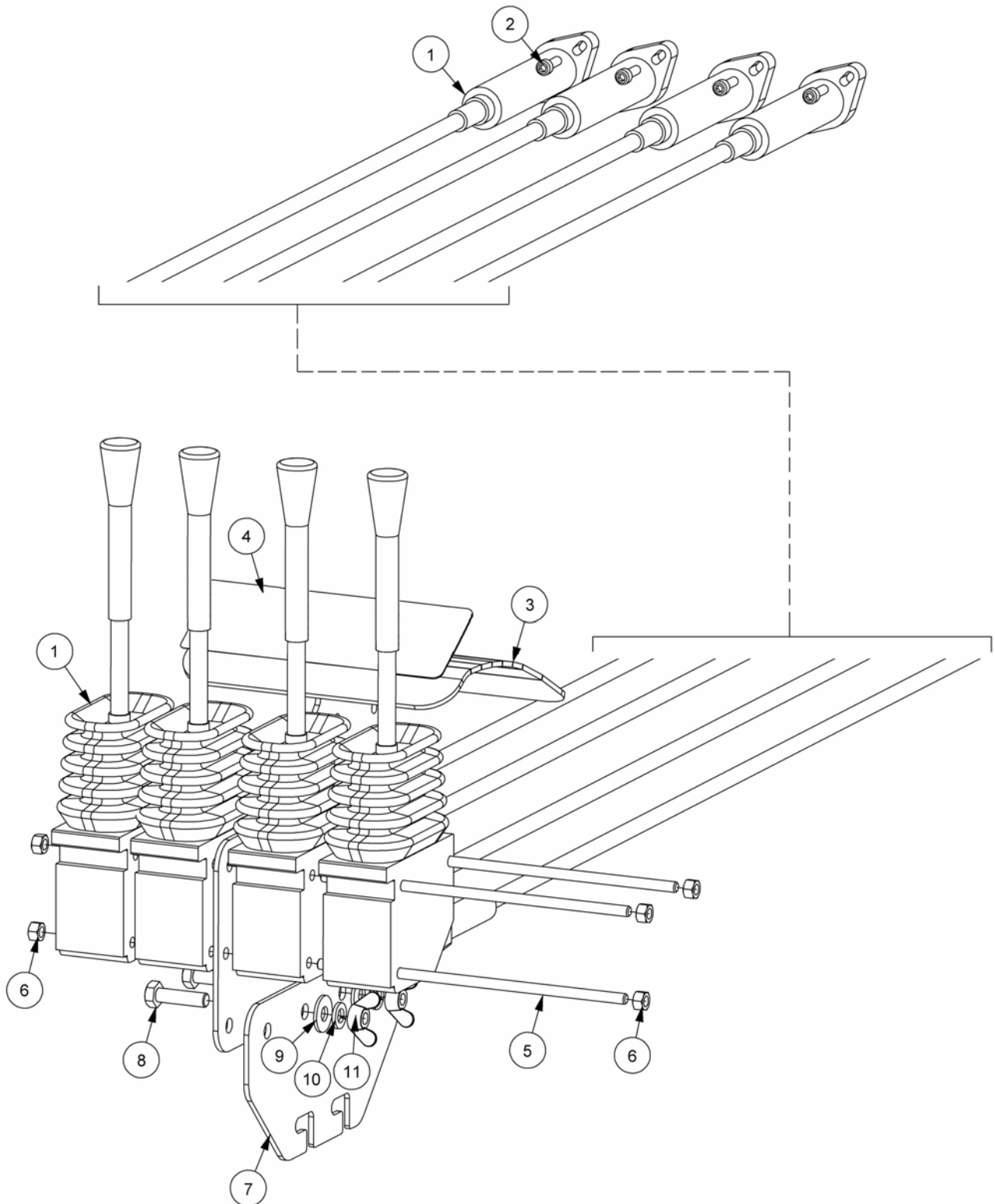
| REF. | QTY. | PART NO. | DESCRIPTION |
|------|------|----------------|--|
| | | 8130358 | CABLE CONTROL VALVE - BSP Models |
| | | 8130359 | CABLE CONTROL VALVE - JIC Models |
| 1 | 1 | 8130355 | BASIC VALVE - <i>complete with:</i> |
| 2 | 1 | 8130023 | MAIN RELIEF VALVE |
| 3 | 1 | 8130022 | NON-RETURN VALVE - <i>comprising of:</i> |
| 4 | 1 | 8130006 | SUPPLY CHECK VALVE |
| 5 | 1 | 8600501 | O RING |
| 6 | 1 | 8130007 | SPRING |
| 7 | 1 | 8130008 | PLUG |
| 8 | 11 | 8650103 | BONDED SEAL |
| 9 | 1 | 8130147 | RELIEF VALVE ASSEMBLY |
| 10 | 1 | 8130133 | DETENT ASSEMBLY |
| 11 | 4 | 8130002 | CENTRING SPRING COVER |
| 12 | 8 | 9343032 | CAPSCREW |
| 13 | 4 | 9383043 | SETSCREW |
| 14 | 8 | 8130003 | CENTRING SPRING CUP |
| 15 | 4 | 8130004 | CENTRING SPRING |
| 16 | 4 | 8130005 | DISTANCE PIECE |
| 17 | 4 | 8130020 | WASHER |
| 18 | 2 | 8581208 | RESTRICTOR ADAPTOR |
| 19 | 8 | 8600112 | O RING |

Items 1 - 19 above are common to both BSP and JIC builds, items 20 - 24 below are specific to a particular build. Select items from list 'A' for BSP build or list 'B' for JIC build.

| A | | 8130358 | BSP Build |
|----------|---|----------------|---------------------------|
| 20 | 1 | 8581236 | UNION (<i>BSP</i>) |
| 21 | 2 | 6000113 | UNION (<i>BSP</i>) |
| 22 | 1 | 8581146 | UNION (<i>BSP</i>) |
| 23 | 3 | 8581145 | UNION (<i>BSP</i>) |
| 24 | 2 | 8130068 | RESTRICTOR (<i>BSP</i>) |
| B | | 8130359 | JIC Build |
| 20 | 1 | 8581235 | UNION (<i>JIC</i>) |
| 21 | 2 | 8581217 | UNION (<i>JIC</i>) |
| 22 | 1 | 8581218 | UNION (<i>JIC</i>) |
| 23 | 3 | 1075115 | UNION (<i>JIC</i>) |
| 24 | 2 | 8130130 | RESTRICTOR (<i>JIC</i>) |

Modules:

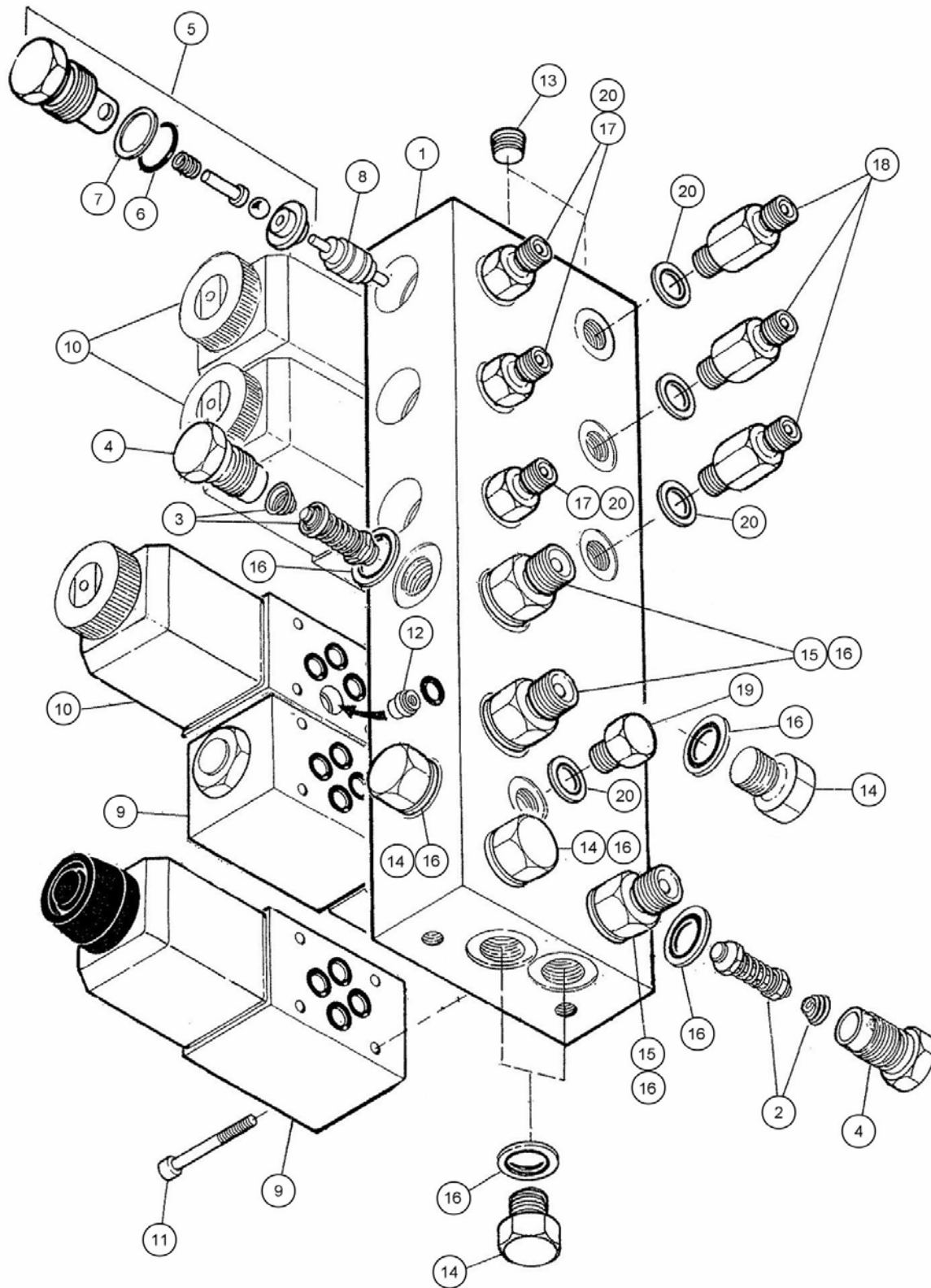
Sub-components of 8130358 & 8130359



CABLE CONTROLS ASSEMBLY

| REF. | QTY. | PART NO. | DESCRIPTION |
|--------------------|------|----------------|---|
| Sub-components of: | | 8130358 | CABLE CONTROL VALVE - BSP Models |
| Sub-components of: | | 8130359 | CABLE CONTROL VALVE - JIC Models |
| 1 | 4 | 8017058 | CONTROL HEAD & CABLE - 2.5m |
| 2 | 8 | 9343032 | CAPSCREW |
| 3 | 1 | 7650306 | ARMREST - 4 LEVER |
| 4 | 1 | 1290270 | DECAL - CONTROL OPERATION |
| 5 | 3 | 04.282.70 | STUD |
| 6 | 6 | 9143003 | SELF-LOCKING NUT |
| 7 | 1 | 42491.01 | CAB MOUNTING BRACKET |
| 8 | 2 | 9213064 | BOLT |
| 9 | 2 | 9100104 | FLAT WASHER |
| 10 | 2 | 9100204 | SPRING WASHER |
| 11 | 2 | 9193004 | WING NUT |
| 12 | 1 | 09.968.99 | KNOB (RED) - <i>Reach Control Lever</i> |
| 13 | 1 | 8017068 | KNOB (YELLOW) - <i>Lift Control Lever</i> |
| 14 | 1 | 8017067 | KNOB (GREEN) - <i>Angle Control Lever</i> |

Module:
1090360



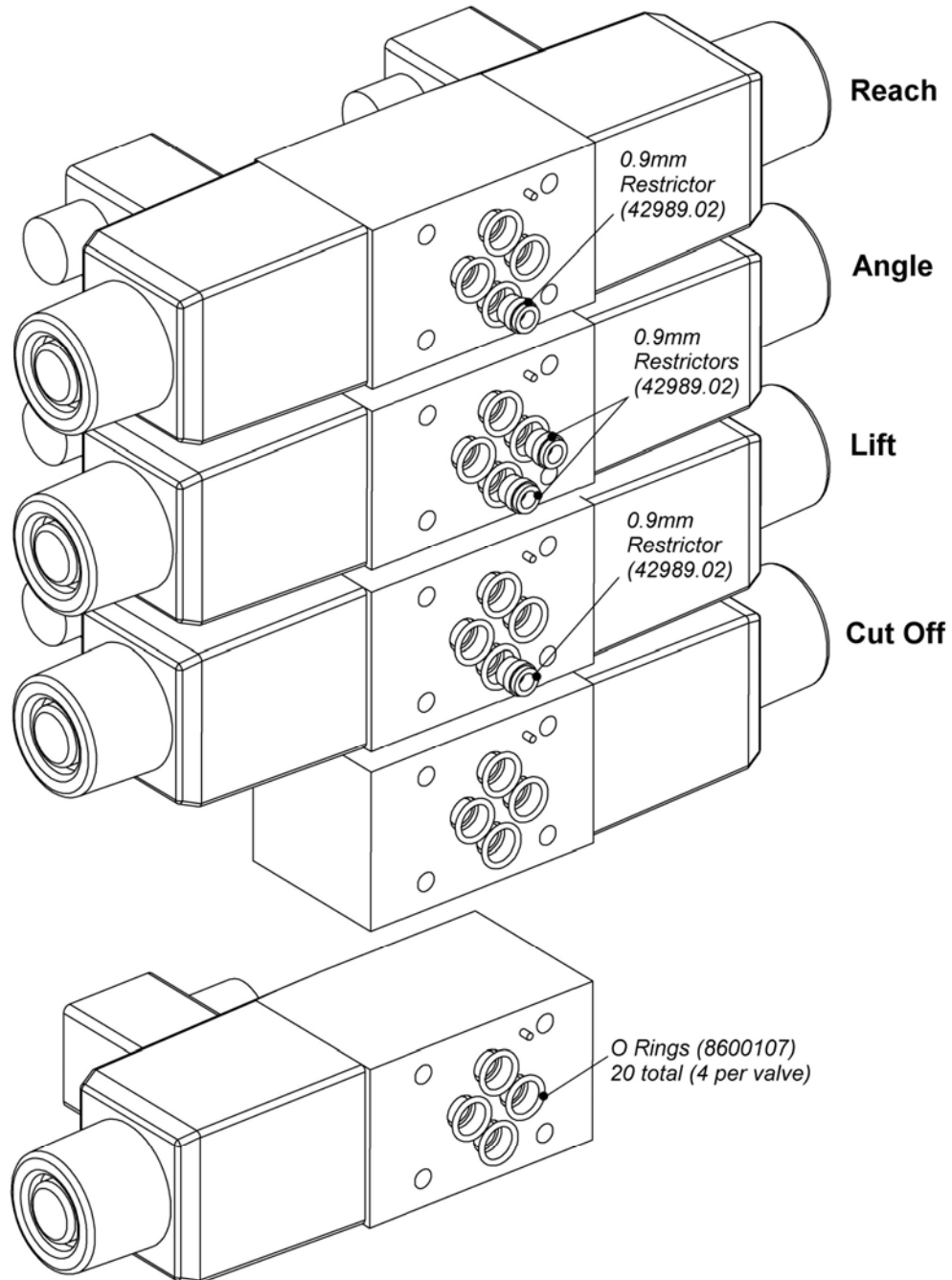
PROPORTIONAL VALVE

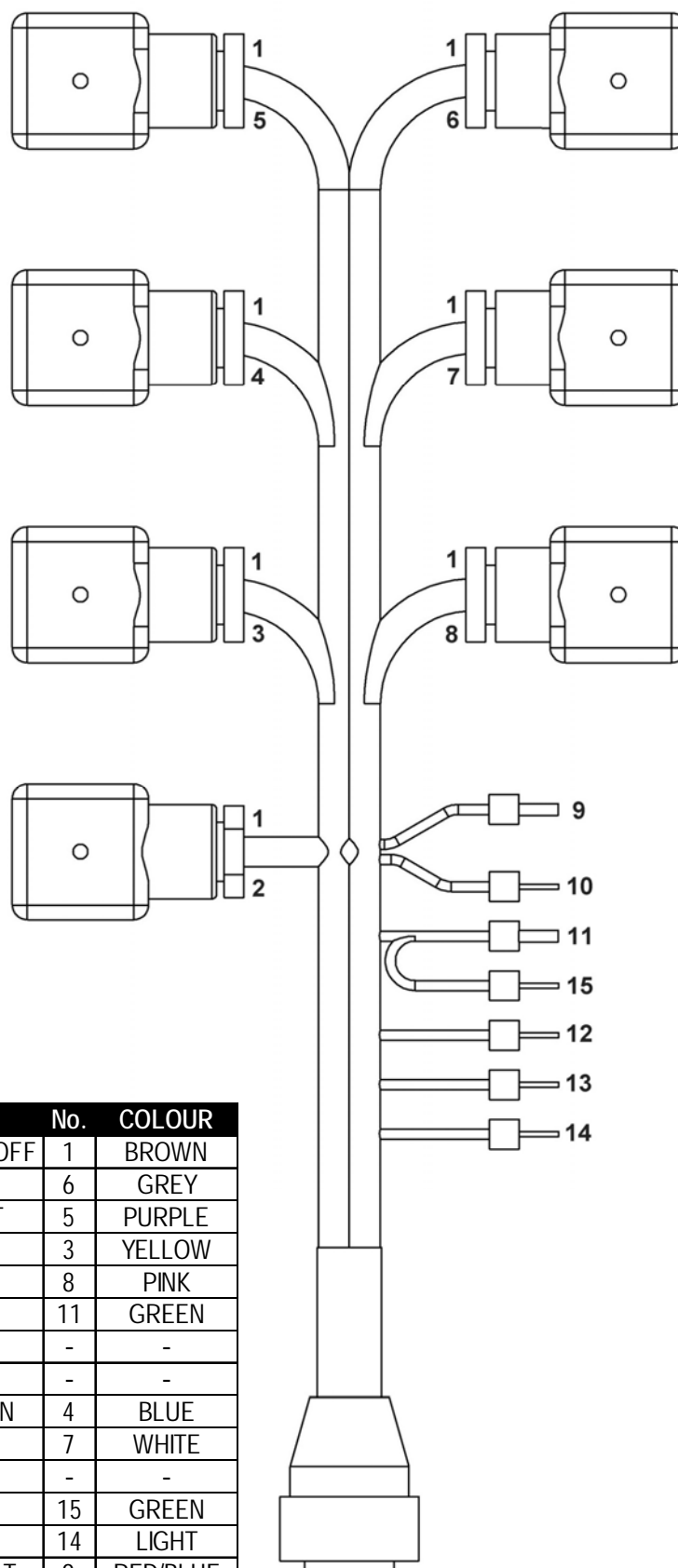
| REF. | QTY. | PART NO. | DESCRIPTION |
|------|------|----------------|---|
| | | 1090360 | PROPORTIONAL VALVE ASSEMBLY |
| 1 | 1 | 8132276 | MANIFOLD BLOCK |
| 2 | 1 | 8130151 | RELIEF VALVE (100BAR) - <i>Arm Services</i> |
| 3 | 1 | 8130151 | RELIEF VALVE (100BAR) - <i>Motor</i> |
| 4 | 2 | 8130032 | RELIEF VALVE CAP |
| 5 | 6 | 8130090 | CHECK VALVE ASSEMBLY c/w: |
| 6 | 1 | 8700644 | O RING |
| 7 | 1 | 8709644 | AE RING |
| 8 | 3 | 8130087 | ACTUATOR |
| 9 | 2 | 8130456 | SINGLE SOLENOID VALVE |
| 10 | 3 | 41784.48 | PROPORTIONAL DOUBLE SOLENOID |
| 11 | 20 | 9243062 | CAPSCREW |
| 12 | 4 | 42989.02 | RESTRICTOR INSERT |
| 13 | 2 | 8582042 | TAPER PLUG |
| 14 | 6 | 05.433.01 | HEXAGON PLUG |
| 15 | 4 | 6000113 | UNION |
| 16 | 11 | 8650103 | BONDED SEAL |
| 17 | 3 | 8581169 | UNION |
| 18 | 3 | 8581279 | EXTENDED UNION |
| 19 | 4 | 520378 | HEXAGON PLUG |
| 20 | 10 | 8650102 | BONDED SEAL |
| | | 8699197 | SEAL KIT |

Note: Replacement O Rings for Solenoid Valves are Part No. 8600107

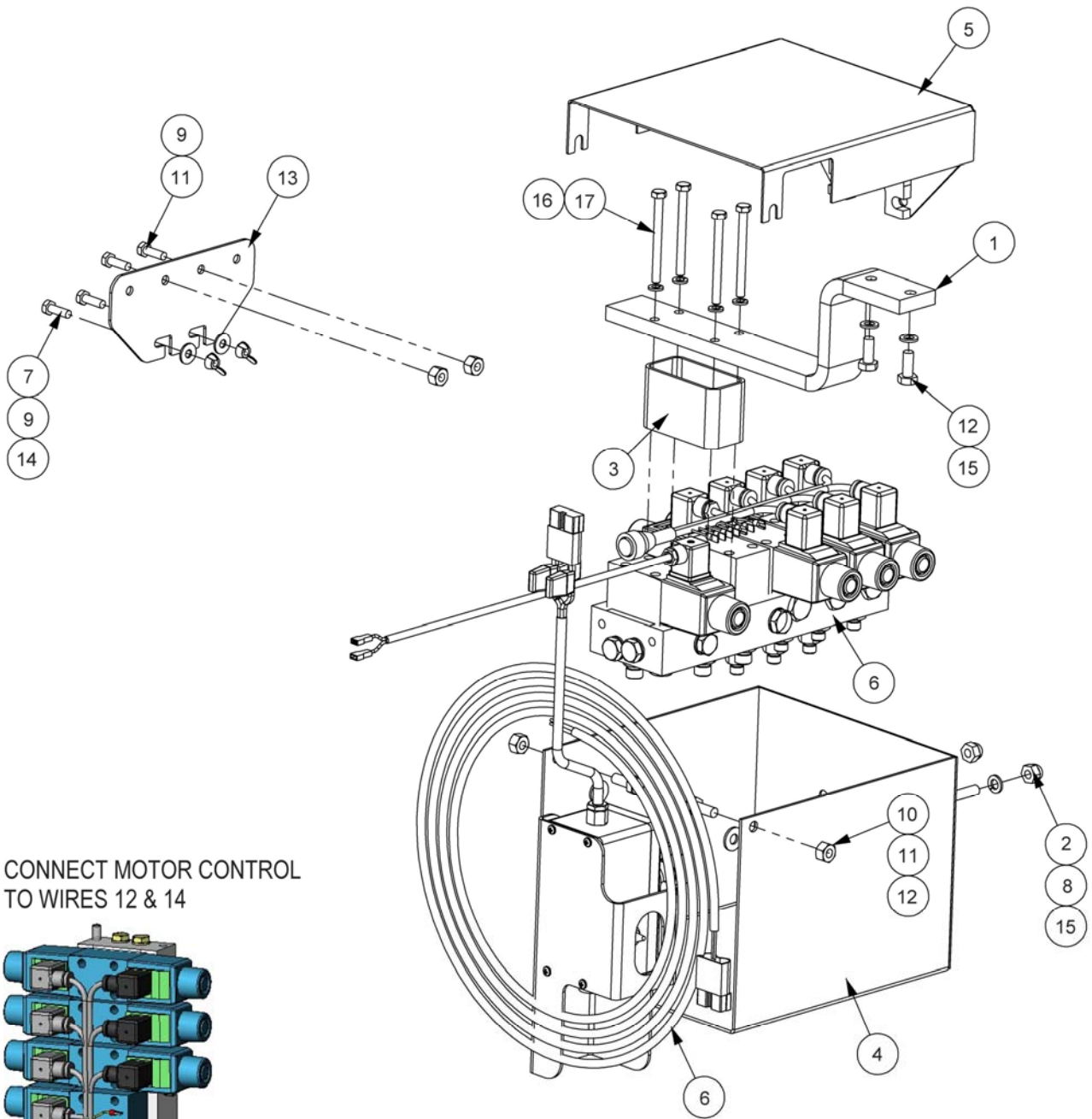
RESTRICTOR LOCATIONS

Module:
1090360 Sub-components

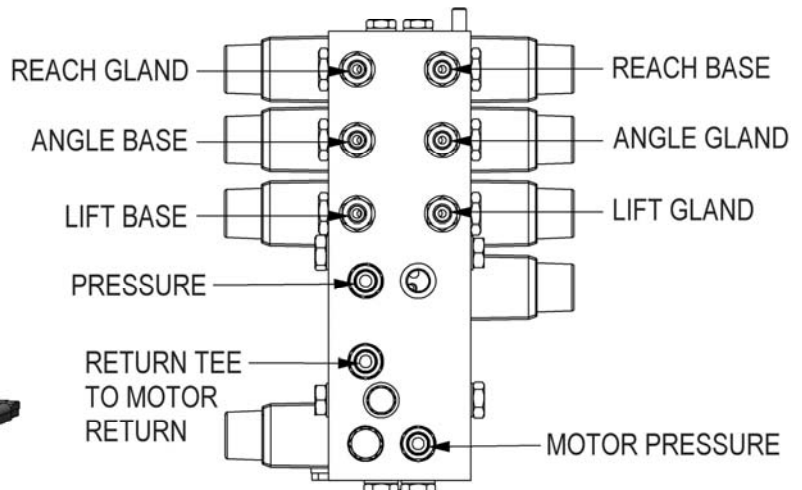
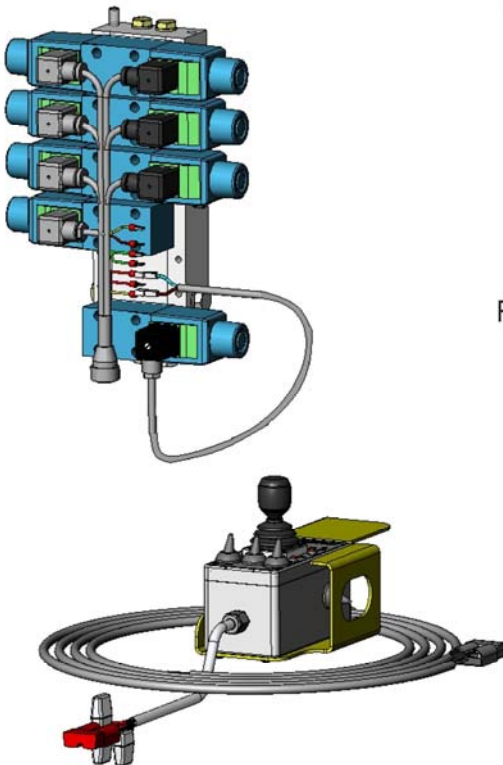




| IDENT. | FUNCTION | No. | COLOUR |
|--------|----------------|-----|-----------|
| A | COMMON + C.OFF | 1 | BROWN |
| B | REACH IN | 6 | GREY |
| C | REACH OUT | 5 | PURPLE |
| D | LIFT UP | 3 | YELLOW |
| E | LIFT DOWN | 8 | PINK |
| F | COMMON | 11 | GREEN |
| G | - | - | - |
| H | - | - | - |
| J | ANGLE DOWN | 4 | BLUE |
| K | ANGLE UP | 7 | WHITE |
| L | - | - | - |
| M | COMMON | 15 | GREEN |
| N | COMMON | 14 | LIGHT |
| P | ANGLE FLOAT | 9 | RED/BLUE |
| R | FLOAT OPTION | 10 | RED/WHITE |
| S | PUMP 1 | 12 | BLACK |
| T | PUMP 2 | 13 | ORANGE |
| V | CUT OFF | 2 | RED |



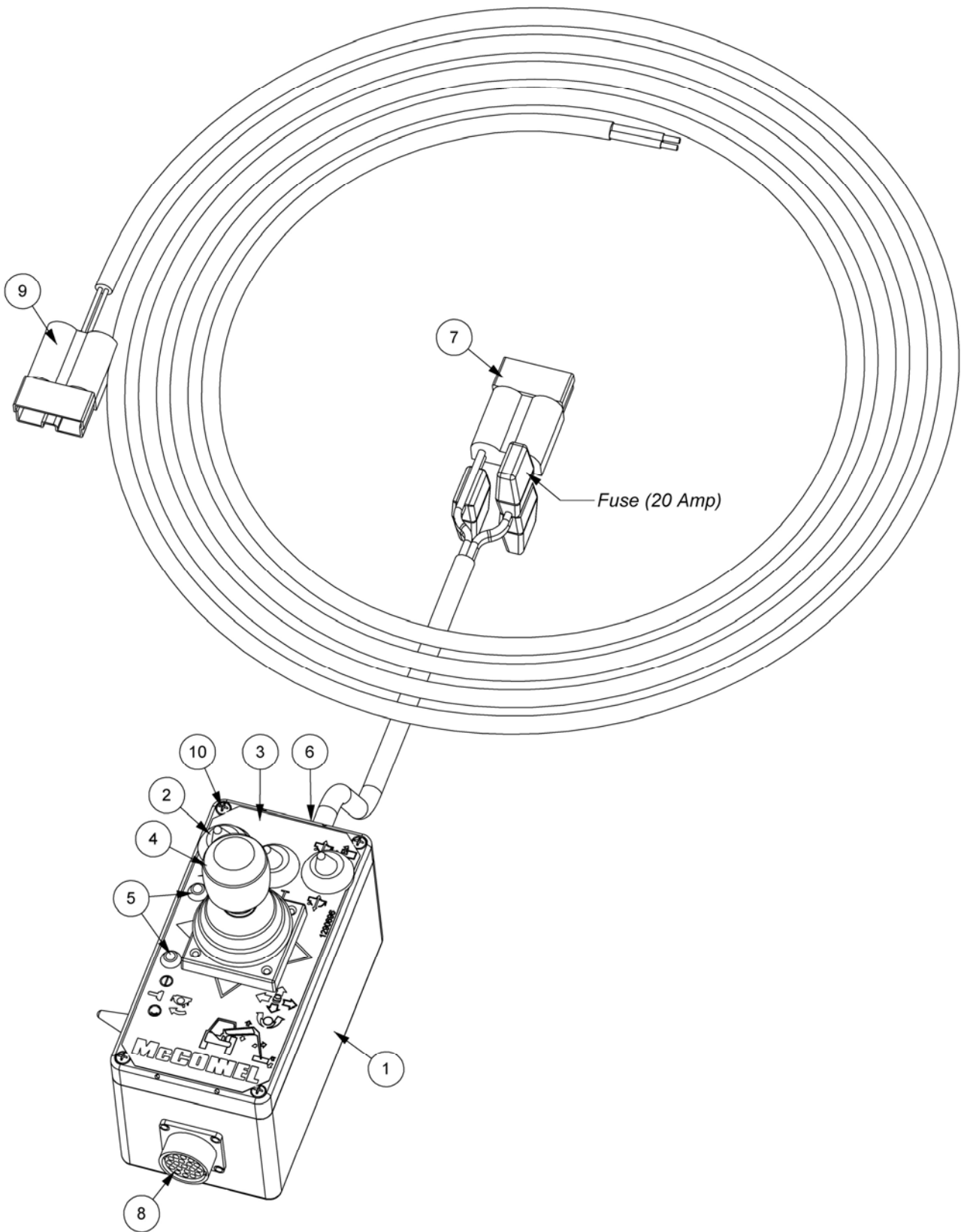
CONNECT MOTOR CONTROL
TO WIRES 12 & 14





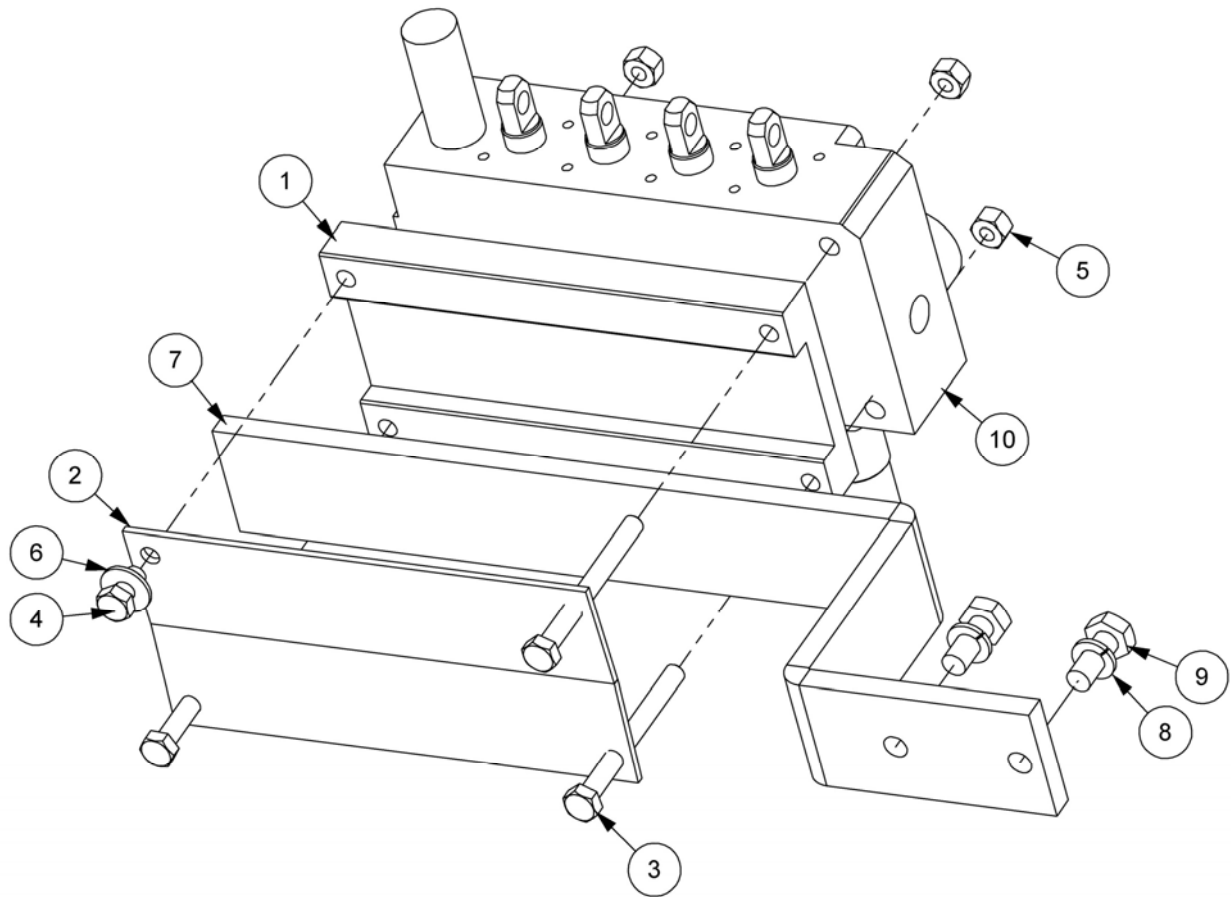
| REF. | QTY. | PART NO. | DESCRIPTION |
|------|------|----------------|---------------------------------------|
| | | 1090706 | PROP. MINI XTC VALVE KIT (BSP) |
| 1 | 1 | 43087.01 | MOUNTING BAR |
| 2 | 2 | 42198.05 | STUD |
| 3 | 1 | 43124.01 | SPACER |
| 4 | 1 | 43086.01 | VALVE COVER |
| 5 | 1 | 43086.03 | BACK PLATE |
| 6 | 1 | 1090360 | SOLENOID/MANIFOLD ASSEMBLY |
| 7 | 2 | 9100104 | FLAT WASHER |
| 8 | 2 | 9100025 | DOME NUT |
| 9 | 4 | 9313054 | SETSCREW |
| 10 | 2 | 9100105 | FLAT WASHER |
| 11 | 4 | 9143005 | SELF-LOCKING NUT |
| 12 | 4 | 9313055 | SETSCREW |
| 13 | 1 | 42491.01 | CAB MOUNTING BRACKET |
| 14 | 2 | 9193004 | WING NUT |
| 15 | 4 | 9100205 | SPRING WASHER |
| 16 | 4 | 9100204 | SPRING WASHER |
| 17 | 4 | 9213184 | BOLT |

Module:
8402394

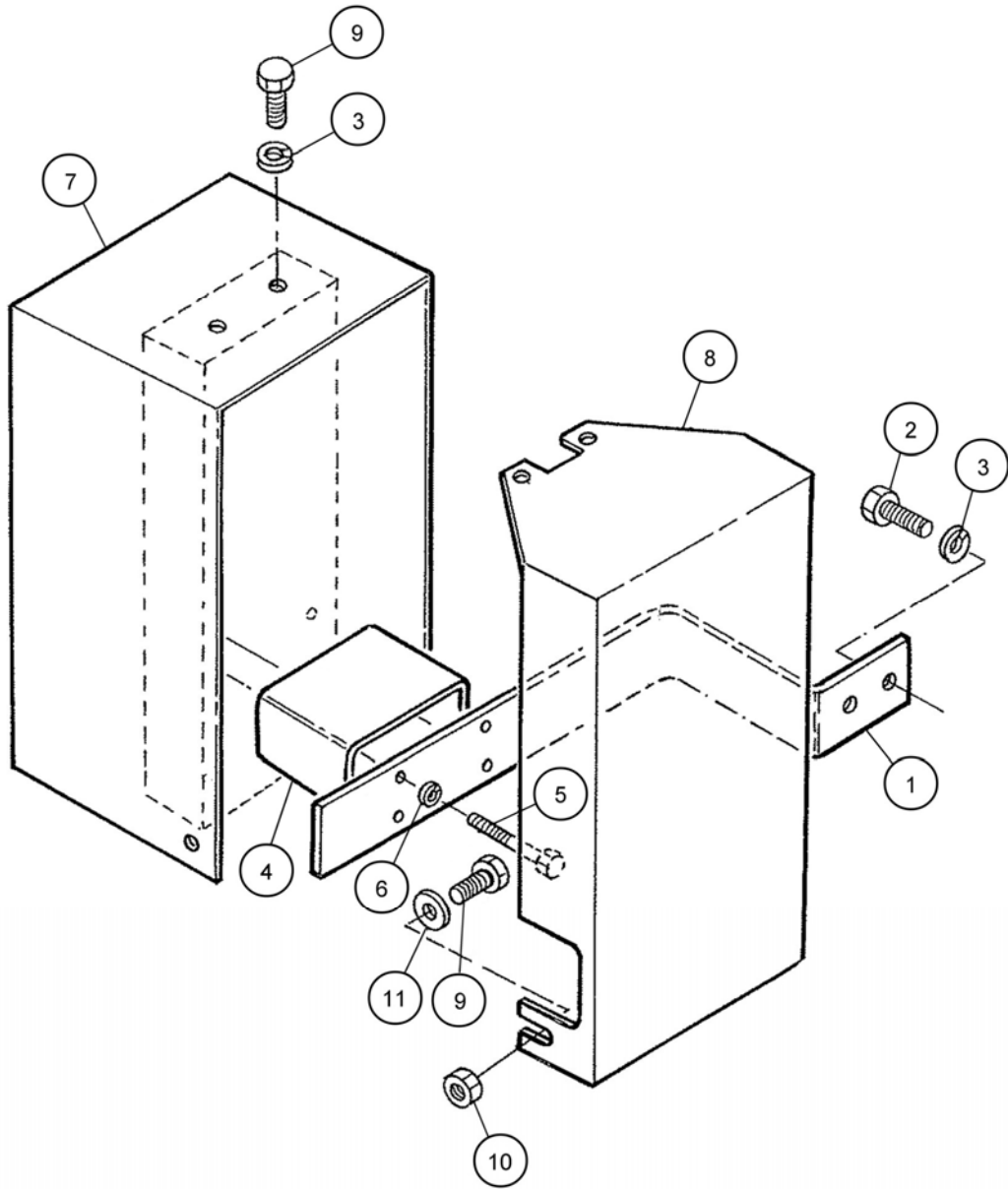


PROPORTIONAL CONTROL UNIT

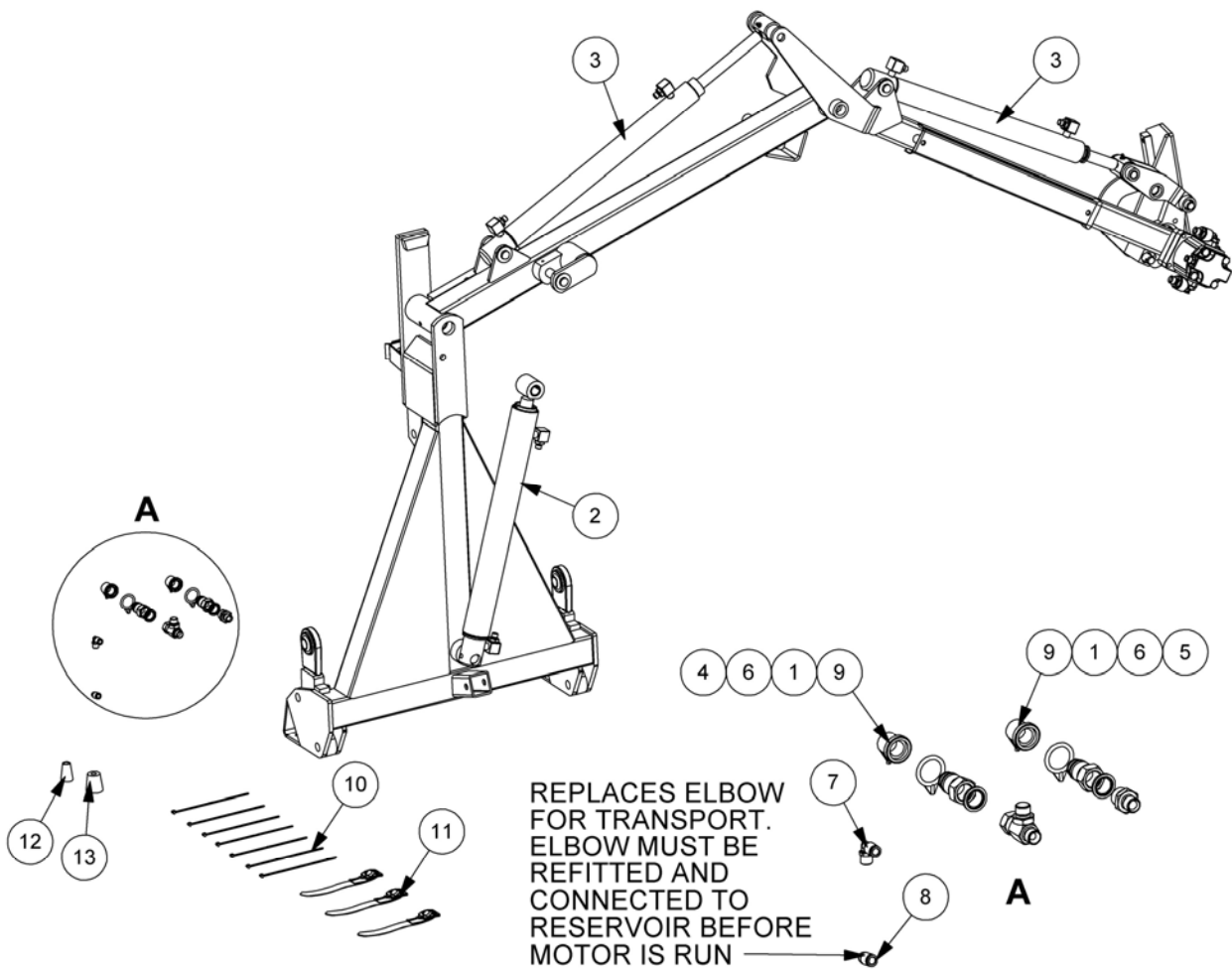
| REF. | QTY. | PART No. | DESCRIPTION |
|------|------|----------------|---|
| | | 8402394 | MINI PROPORTIONAL CONTROL |
| 1 | | 8402400 | SWITCHBOX |
| 2 | 2 | 8402024 | SWITCH COVER |
| 3 | 1 | 1290696 | DECAL - SWITCH BOX |
| 4 | 1 | 8402405 | JOYSTICK (3 AXIS) |
| 5 | 2 | 41845.41 | LED |
| 6 | 1 | 8402149 | GLAND |
| 7 | 1 | 43022.47 | CONNECTOR |
| 8 | 1 | 8402189 | PANEL MOUNTING SHELL |
| 9 | 1 | 8402237 | POWER SUPPLY LOOM |
| 10 | 1 | 22698.44 | 1/4 TURN FASTENER (PACK OF 4) |
| | 1 | 43034.02 | BLADE FUSE (20A) |
| | | | BRACKET & FIXINGS (<i>not illustrated</i>) |
| | 1 | 42442.01 | SWITCHBOX BRACKET |
| | 4 | 2800243 | SELF-TAPPER SCREW |



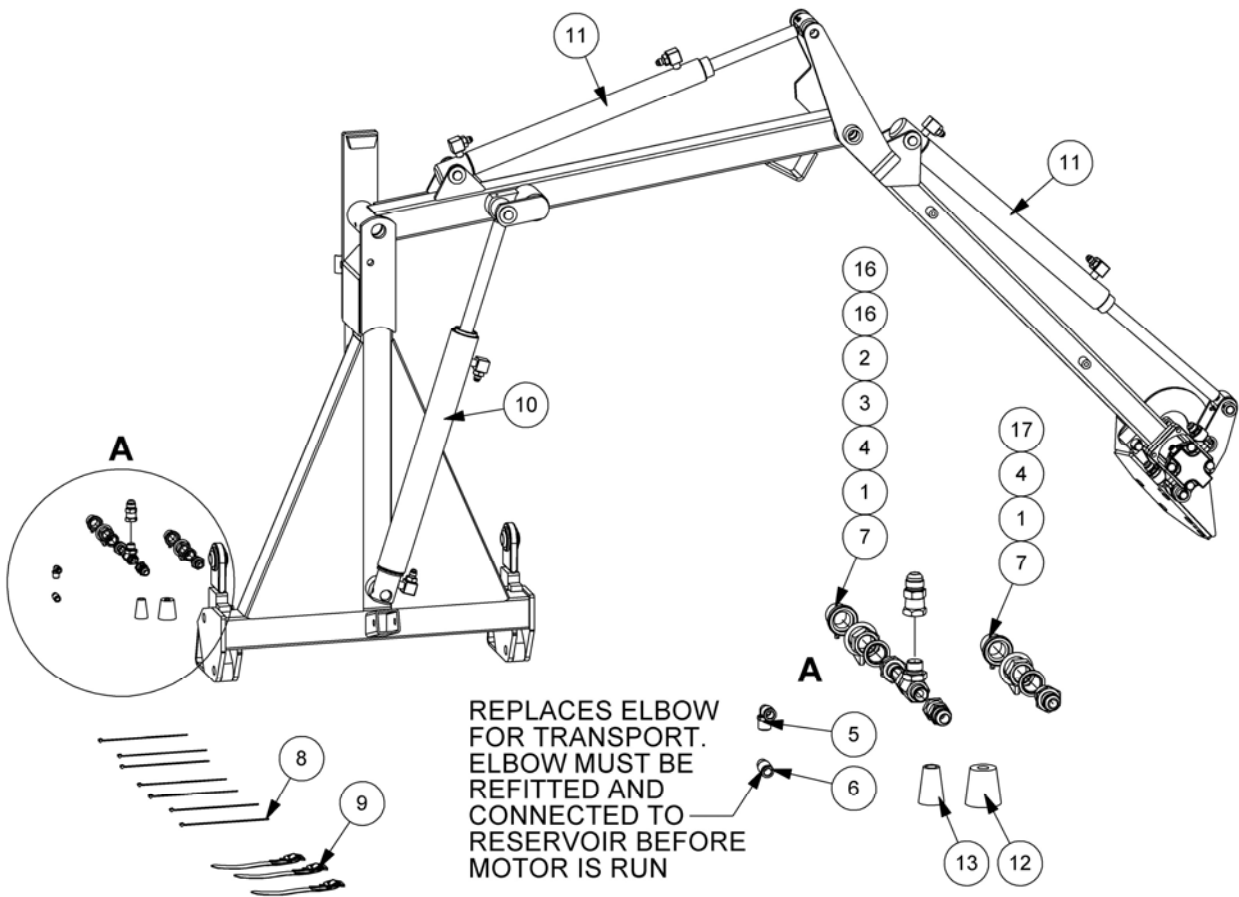
| REF. | QTY. | PART NO. | DESCRIPTION |
|-------------------------------------|------|----------|------------------------------------|
| CABLE CONTROL VALVE MOUNTING | | | |
| 1 | 1 | 1090312 | VALVE MOUNTING PLATE |
| 2 | 1 | 1090313 | VALVE MOUNTING CLAMP PLATE |
| 3 | 3 | 9213164 | VALVE MOUNTING BAR |
| 4 | 1 | 9313003 | SETSCREW |
| 5 | 3 | 9143004 | SELF-LOCKING NUT |
| 6 | 1 | 9100104 | SPRING WASHER |
| 7 | 1 | 1090124 | VALVE MOUNTING BAR |
| 8 | 2 | 9100205 | SPRING WASHER |
| 9 | 2 | 9313055 | SETSCREW |
| 10 | 1 | 8130358 | CONTROL VALVE ASSEMBLY - BSP Build |
| | 1 | 8130359 | CONTROL VALVE ASSEMBLY - JIC Build |



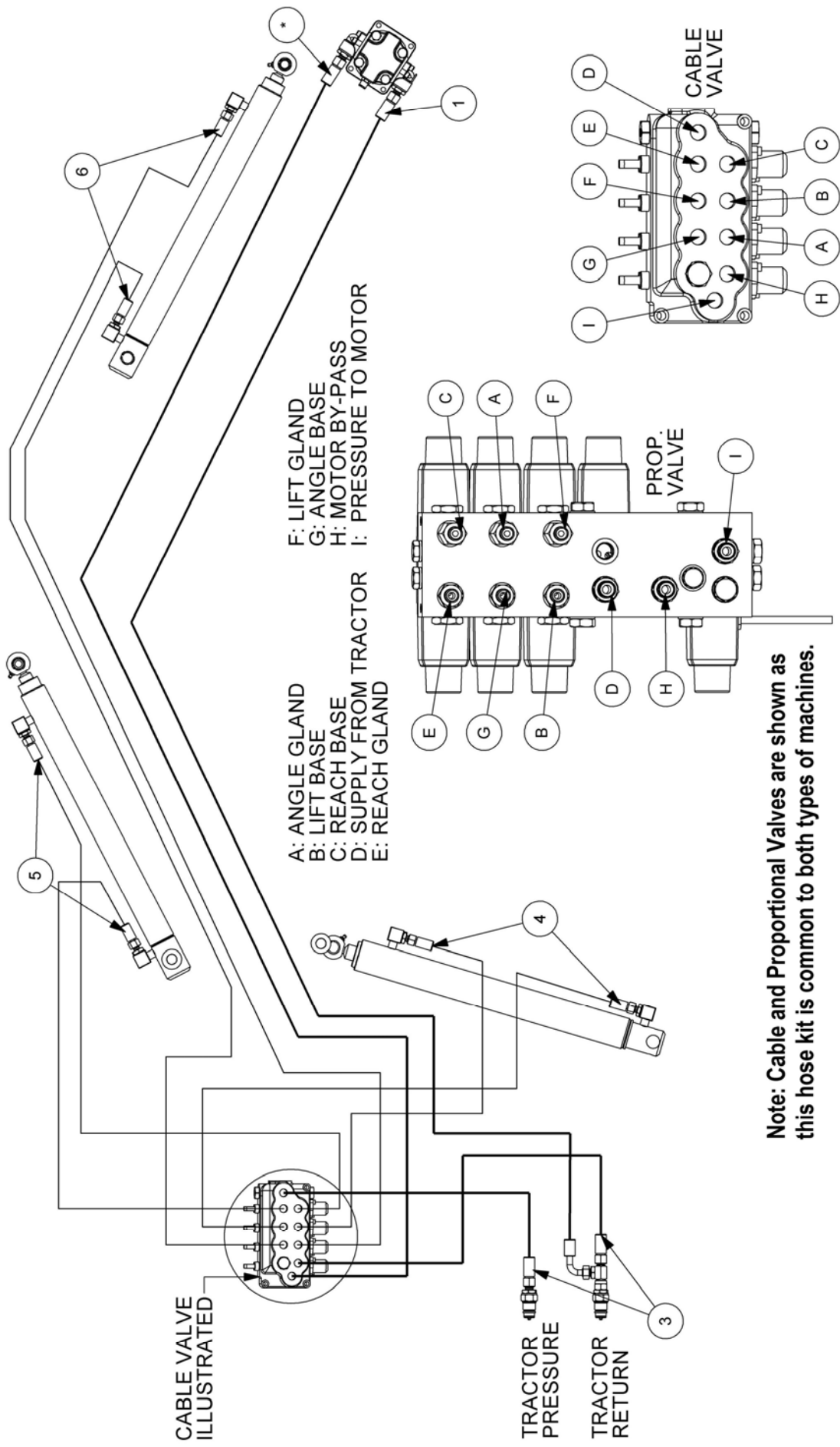
| REF. | QTY. | PART NO. | DESCRIPTION |
|------|------|----------|-------------------------|
| 1 | 1 | 43087.01 | VALVE MOUNTING BAR |
| 2 | 2 | 9313055 | SETSCREW |
| 3 | 4 | 9100205 | SPRING WASHER |
| 4 | 1 | 43124.01 | SPACER |
| 5 | 4 | 9213184 | BOLT |
| 6 | 4 | 9100204 | SPRING WASHER |
| 7 | 1 | 43086.01 | VALVE COVER - MANIFOLD |
| 8 | 1 | 43086.02 | VALVE COVER - SOLENOIDS |
| 9 | 4 | 9313045 | SETSCREW |
| 10 | 2 | 9143105 | SELF-LOCKING NUT |
| 11 | 2 | 9100105 | PLAIN WASHER |



| REF. | QTY. | PART NO. | DESCRIPTION |
|------|------|----------------|--|
| | | 1090387 | HYDRAULIC INSTALLATION - BSP Builds |
| 1 | 2 | 8590074 | QUICK RELEASE (MALE) |
| 2 | 1 | 1090305 | LIFT RAM ASSEMBLY (BSP) |
| 3 | 2 | 1090302 | REACH/ANGLE RAM ASSEMBLY (BSP) |
| 4 | 1 | 11.068.69 | ADAPTOR TEE |
| 5 | 2 | 6000112 | ADAPTOR |
| 6 | 2 | 8650104 | BONDED SEAL |
| 7 | 1 | 8581329 | ELBOW c/w FITTINGS |
| 8 | 1 | 8581585 | FEMALE PLUG |
| 9 | 2 | 8002108 | DUST CAP |
| 10 | 7 | 7135084 | CABLE TIE |
| 11 | 3 | 7106187 | NYLON STRAP |
| 12 | 1 | 1090093 | DRAIN LINE ADAPTOR - SMALL |
| 13 | 1 | 1090092 | DRAIN LINE ADAPTOR - LARGE |
| 14 | 1 | 8501148 | NYLON HOSE (5000mm) - <i>not illustrated</i> |
| 15 | 1 | 00900913 | HOSE SLEEVING - <i>not illustrated</i> |



| REF. | QTY. | PART NO. | DESCRIPTION |
|------|------|----------------|--|
| | | 1090395 | HYDRAULIC INSTALLATION - JIC Builds |
| 1 | 2 | 8590074 | QUICK RELEASE (MALE) |
| 2 | 1 | 11.068.69 | ADAPTOR TEE |
| 3 | 1 | 6000112 | ADAPTOR |
| 4 | 2 | 8650104 | BONDED SEAL |
| 5 | 1 | 8581329 | ELBOW c/w FITTINGS |
| 6 | 1 | 8581585 | FEMALE PLUG |
| 7 | 2 | 8002108 | DUST CAP |
| 8 | 7 | 7135084 | CABLE TIE |
| 9 | 3 | 7106187 | NYLON STRAP |
| 10 | 1 | 1090306 | LIFT RAM ASSEMBLY (JIC) |
| 11 | 2 | 1090303 | REACH/ANGLE RAM ASSEMBLY (JIC) |
| 12 | 1 | 1090092 | DRAIN LINE ADAPTOR - LARGE |
| 13 | 1 | 1090093 | DRAIN LINE ADAPTOR - SMALL |
| 14 | 1 | 8501148 | NYLON HOSE (5000mm) - <i>not illustrated</i> |
| 15 | 1 | 00900913 | HOSE SLEEVING - <i>not illustrated</i> |
| 16 | 2 | 8581221 | ADAPTOR (JIC) |
| 17 | 1 | 8120003 | ADAPTOR (JIC) |

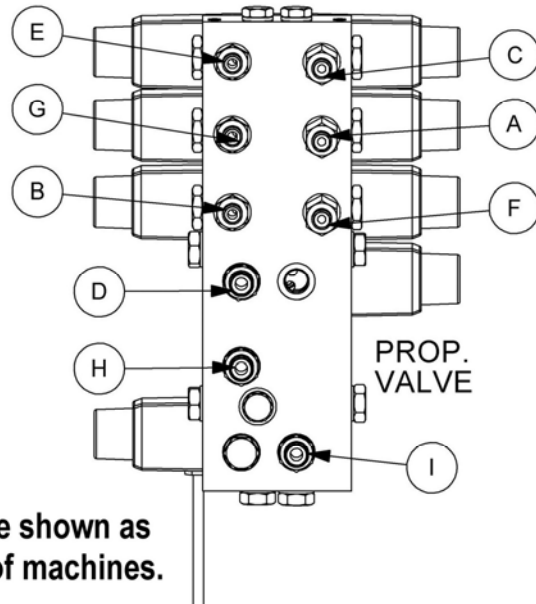
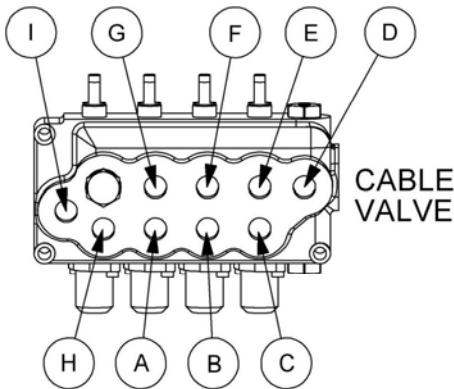


- A: ANGLE GLAND
 B: LIFT BASE
 C: REACH BASE
 D: SUPPLY FROM TRACTOR
 E: REACH GLAND
 F: LIFT GLAND
 G: ANGLE BASE
 H: MOTOR BY-PASS
 I: PRESSURE TO MOTOR

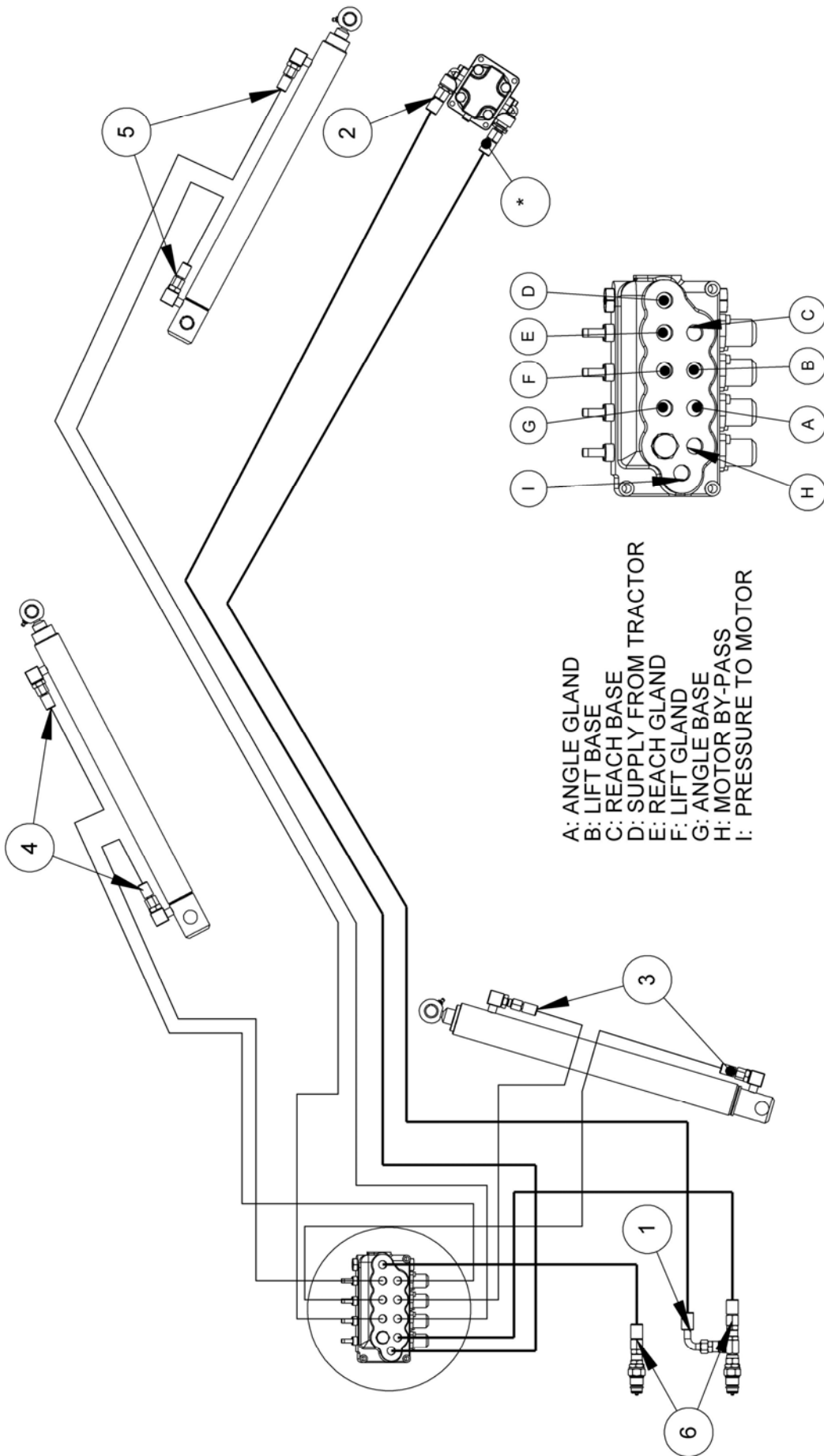
Note: Cable and Proportional Valves are shown as this hose kit is common to both types of machines.

| REF. | QTY. | PART NO. | DESCRIPTION |
|------|------|------------------|--|
| | | 41.080.06 | SWINGTRIM HOSE KIT - BSP Builds |
| 1 | 1 | 10.004.51 | HOSE - 3/8" BSP FS/F90 x 4100mm |
| 2 | 1 | 10.004.43 | HOSE - 3/8" BSP FS/F90 x 3300mm |
| 3 | 2 | 10.004.19 | HOSE - 3/8" BSP FS/F90 x 950mm |
| 4 | 2 | 10.002.22 | HOSE - 1/4" BSP FS/F90 x 1200mm |
| 5 | 2 | 10.002.27 | HOSE - 1/4" BSP FS/F90 x 1700mm |
| 6 | 2 | 10.002.38 | HOSE - 1/4" BSP FS/F90 x 2800mm |

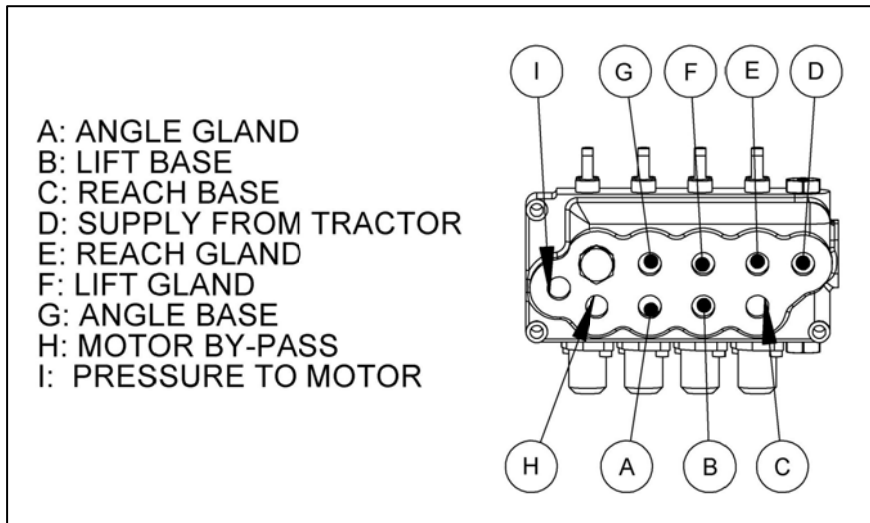
- A: ANGLE GLAND
- B: LIFT BASE
- C: REACH BASE
- D: SUPPLY FROM TRACTOR
- E: REACH GLAND
- F: LIFT GLAND
- G: ANGLE BASE
- H: MOTOR BY-PASS
- I: PRESSURE TO MOTOR



Note: Cable and Proportional Valves are shown as this hose kit is common to both types of machines.

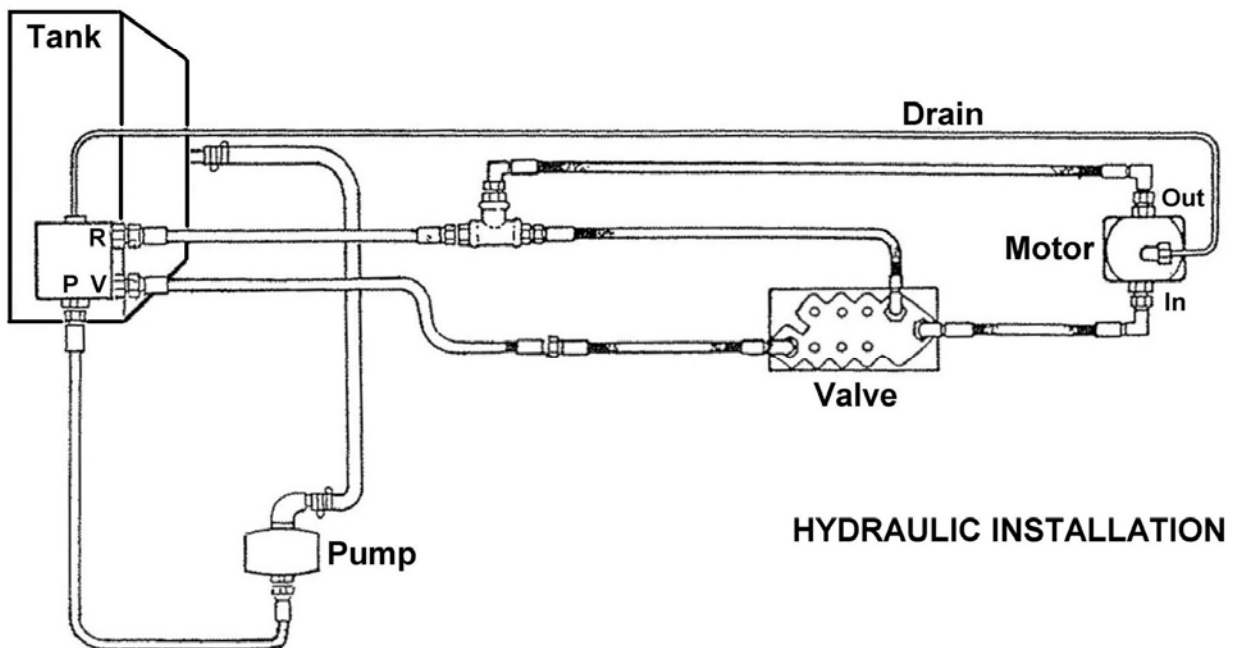
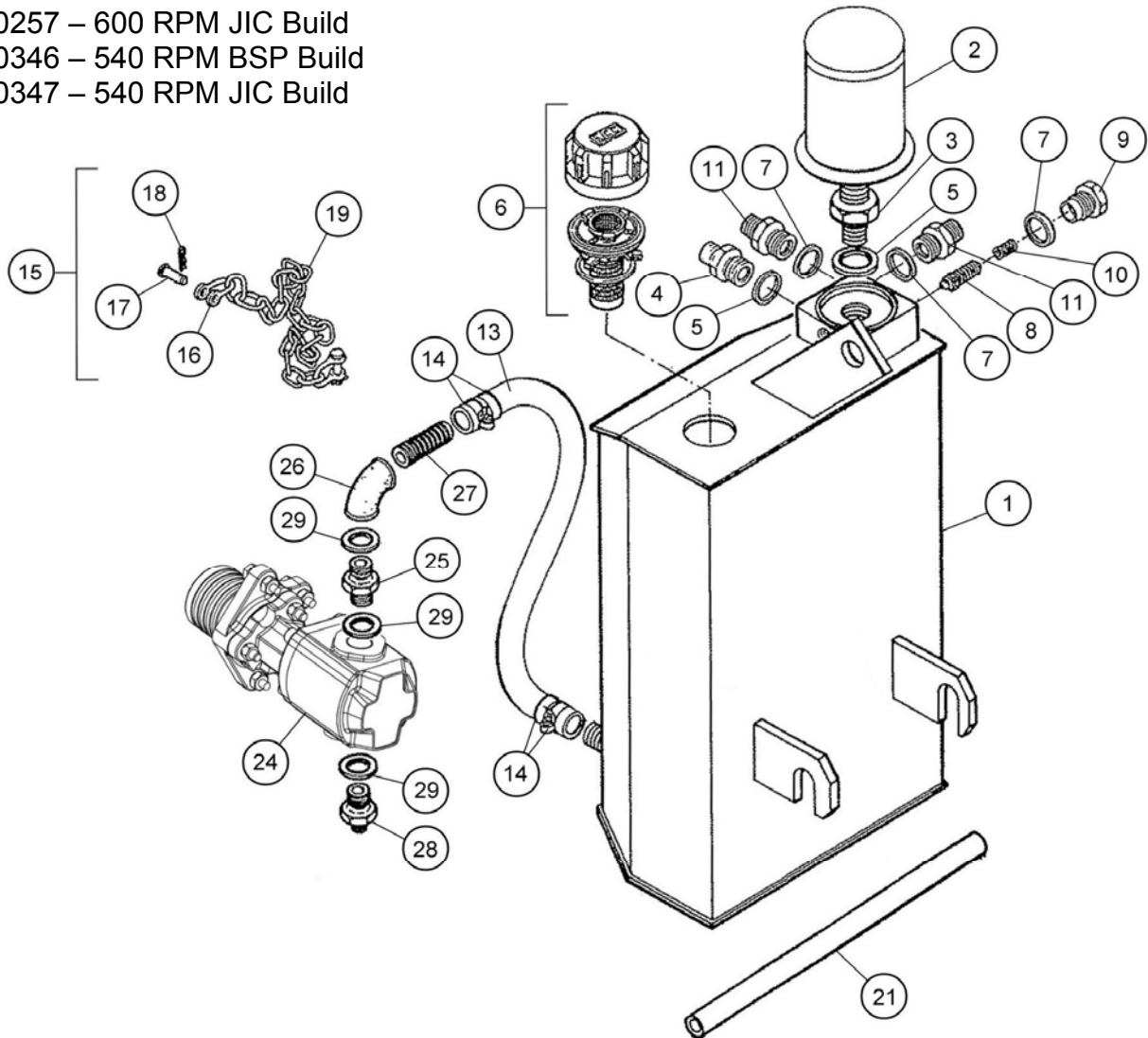


| REF. | QTY. | PART NO. | DESCRIPTION |
|------|------|------------------|--|
| | | 41.080.07 | SWINGTRIM HOSE KIT - JIC Builds |
| 1 | 1 | 08.958.49 | HOSE - 3/4"JIC FS/F90 x 4100 |
| 2 | 1 | 08.958.41 | HOSE - 3/4"JIC FS/F90 x 3300mm |
| 3 | 2 | 08.957.20 | HOSE - 9/16"JIC FS/F90 x 1200mm |
| 4 | 2 | 08.957.25 | HOSE - 9/16"JIC FS/F90 x 1700mm |
| 5 | 2 | 08.957.36 | HOSE - 9/16"JIC FS/F90 x 2800mm |
| 6 | 2 | 08.958.17 | HOSE - 3/4"JIC FS/F90 x 950mm |



Modules:

- 1090258 – 600 RPM BSP Build
- 1090257 – 600 RPM JIC Build
- 1090346 – 540 RPM BSP Build
- 1090347 – 540 RPM JIC Build



HYDRAULIC INSTALLATION

PUMP & TANK KIT ASSEMBLIES

| REF. | QTY. | PART NO. | DESCRIPTION |
|------|------|----------------|--|
| | | 1090258 | PUMP & TANK KIT (600 RPM PTO SPEED) - BSP Build |
| | | 1090257 | PUMP & TANK KIT (600 RPM PTO SPEED) - JIC Build |
| | | 1090346 | PUMP & TANK KIT (540 RPM PTO SPEED) - BSP Build |
| | | 1090347 | PUMP & TANK KIT (540 RPM PTO SPEED) - JIC Build |
| | | 1090340 | TANK ASSEMBLY (540 & 600 RPM) - <i>BSP Builds</i> |
| | | 1090341 | TANK ASSEMBLY (540 & 600 RPM) - <i>JIC Builds</i> |
| 1 | 1 | 1090339 | HYDRAULIC OIL TANK |
| 2 | 1 | 8401045 | FILTER |
| 3 | 1 | 8581174 | UNION |
| 4 | 1 | 6000112 | BSP ADAPTOR - <i>BSP build only</i> |
| | 1 | 8120003 | JIC ADAPTOR - <i>JIC build only</i> |
| 5 | 2 | 8650104 | BONDED SEAL |
| 6 | 1 | 8401050 | FILLER / BREATHER ASSEMBLY |
| 7 | 3 | 8650103 | BONDED SEAL |
| 8 | 1 | 8130029 | RELIEF VALVE |
| 9 | 1 | 8130031 | RELIEF VALVE CAP |
| 10 | 1 | 8116011 | SPRING |
| 11 | 2 | 6000113 | BSP ADAPTOR - <i>BSP build only</i> |
| | 2 | 8581170 | JIC ADAPTOR - <i>JIC build only</i> |
| 12 | 1 | 8531353 | HOSE - 3/8" BSP FS/F90 x 22" - <i>BSP build only</i> |
| | 1 | 8531078 | HOSE - 3/4" JIC FS/F90 x 22" - <i>JIC build only</i> |

The following items are sub-components of Pump & Drive Assemblies and are common to all builds.

| | | | |
|----|---|---------|--|
| 13 | 1 | 8500865 | SUCTION HOSE - 1" BORE x 36" |
| 14 | 4 | 0904106 | HOSE CLIP |
| 15 | 2 | 6000087 | SHACKLE ASSEMBLY c/o: |
| 16 | 1 | 6000088 | SHACKLE |
| 17 | 1 | 6000089 | SHACKLE PIN |
| 18 | 1 | 0481105 | SPRING COTTER |
| 19 | 1 | 0902330 | REACTION CHAIN |
| 20 | 1 | 8013389 | TORQUE ARM - <i>600RPM Builds only</i> |
| | 1 | 8005033 | TORQUE ARM - <i>540RPM Builds only</i> |
| 21 | 1 | 1090384 | TUBE |
| 22 | - | - | <i>Item no longer applicable</i> |
| 23 | - | - | <i>Item no longer applicable</i> |

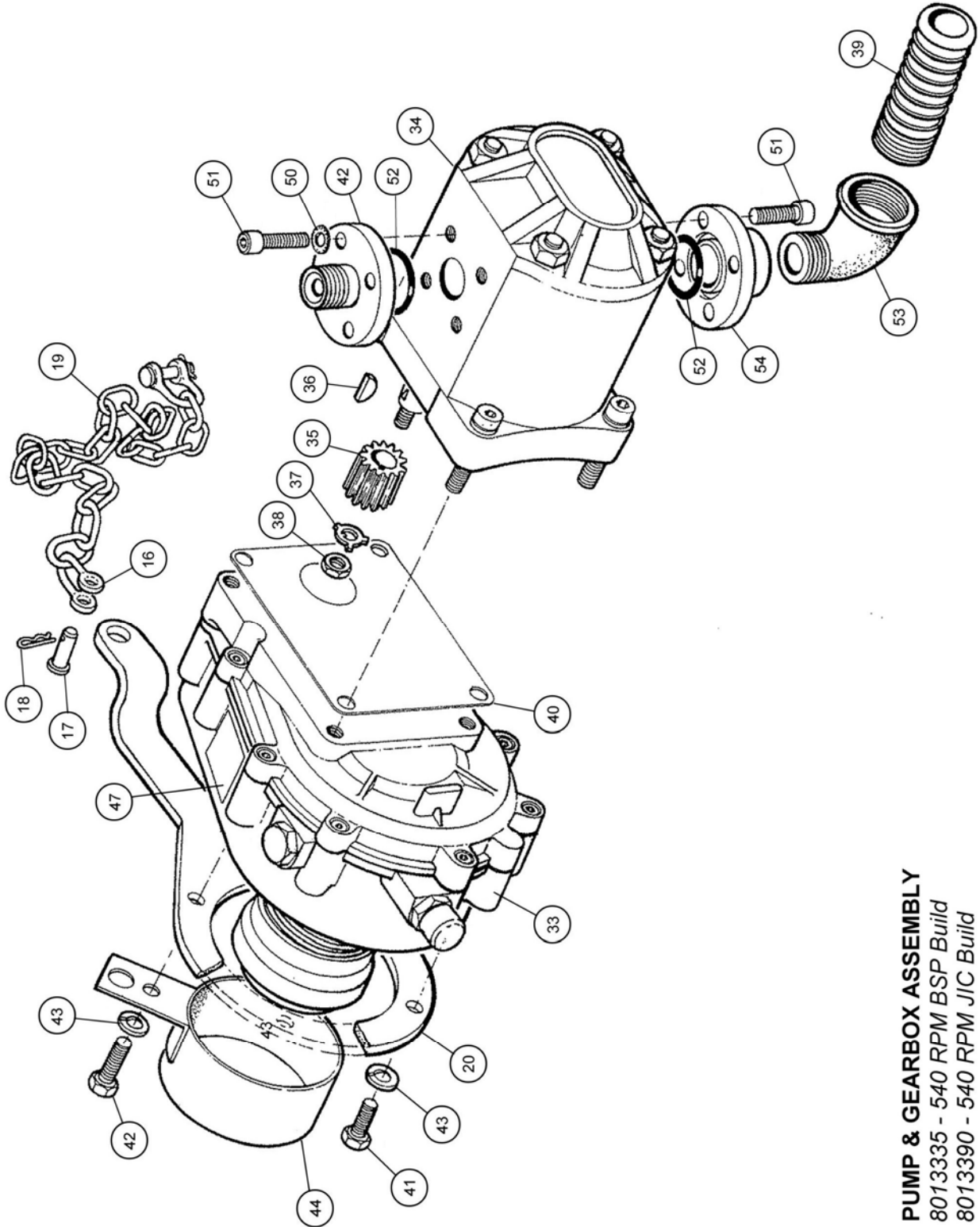
All additional Pump & Drive components are specific to builds and are listed on the following page.

Continued...

Modules:

8013335 – 540 RPM BSP Build

8013390 – 540 RPM JIC Build



PUMP & GEARBOX ASSEMBLY
8013335 - 540 RPM BSP Build
8013390 - 540 RPM JIC Build

PUMP & TANK KIT ASSEMBLIES

| REF. | QTY. | PART NO. | DESCRIPTION |
|------|------|----------------|--|
| | | 8013420 | PUMP & DRIVE SUPPORT - 600 RPM BSP Build |
| | | 8013391 | PUMP & DRIVE SUPPORT - 600 RPM JIC Build |
| 24 | 1 | 8013418 | PUMP & DRIVE ASSEMBLY |
| 25 | 1 | 8581136 | UNION |
| 26 | 1 | 8581055 | ELBOW - 90° |
| 27 | 1 | 8005037 | UNION |
| 28 | 1 | 8581131 | BSP ADAPTOR - <i>BSP build only</i> |
| | 1 | 8581244 | JIC ADAPTOR - <i>JIC build only</i> |
| 29 | 3 | 8650106 | BONDED SEAL |
| 30 | 4 | 9213085 | BOLT |
| 31 | 4 | 9143005 | NUT |
| | | 8699230 | SEAL KIT FOR PUMP (600 RPM) |
| | | 8013335 | PUMP, GEARBOX & SUPPORT - 540 RPM BSP Build |
| | | 8013390 | PUMP, GEARBOX & SUPPORT - 540 RPM JIC Build |
| 32 | 1 | 8013323 | PUMP & GEARBOX - <i>BSP Build</i> |
| | 1 | 8013326 | PUMP & GEARBOX - <i>JIC Build</i> |
| 33 | | 8013325 | GEARBOX |
| 34 | | 8201456 | PUMP |
| 35 | | 8201131 | PUMP DRIVE COUPLING |
| 36 | | 8201133 | WOODRUFF KEY |
| 37 | | 8201134 | TAB WASHER |
| 38 | | 8201134 | THIN NUT |
| 39 | 1 | 8005037 | UNION - LOW PRESSURE |
| 40 | 1 | 8201132 | GASKET |
| 41 | 3 | 9313055 | SETSCREW |
| 42 | 1 | 9313065 | SETSCREW |
| 43 | 4 | 9100205 | SPRING WASHER |
| 44 | 1 | 8013268 | PTO GUARD |
| 45 | 4 | 9243074 | CAPSCREW |
| 46 | 4 | 9100204 | SPRING WASHER |
| 47 | 1 | 8013052 | INSTRUCTION LABEL |
| 48 | 1 | 8005027 | BSP PRESSURE CONNECTION (<i>c/w O Ring & Fittings</i>) |
| 49 | 1 | 8005031 | JIC PRESSURE CONNECTION (<i>c/w O Ring & Fittings</i>) |
| 50 | 8 | 0100302 | SHAKEPROOF WASHER - INTERNAL |
| 51 | 8 | 9343044 | CAPSCREW |
| 52 | 2 | 8600405 | O RING |
| 53 | 1 | 8581168 | ELBOW |
| 54 | 1 | 8005036 | UNION BASE |
| 55 | 1 | 7118243 | DECAL - MAX RPM |
| | | 8699176 | SEAL KIT FOR PUMP (540 RPM) - <i>Pre 1987 models</i> |
| | | 8699214 | SEAL KIT FOR PUMP (540 RPM) - <i>1987 onward models</i> |

Refer to previous pages for common components of the Pump & Drive Assemblies (Items 13-23).



McConnel Limited, Temeside Works, Ludlow, Shropshire SY8 1JL. England.
Telephone: 01584 873131. Facsimile: 01584 876463. www.mcconnel.com