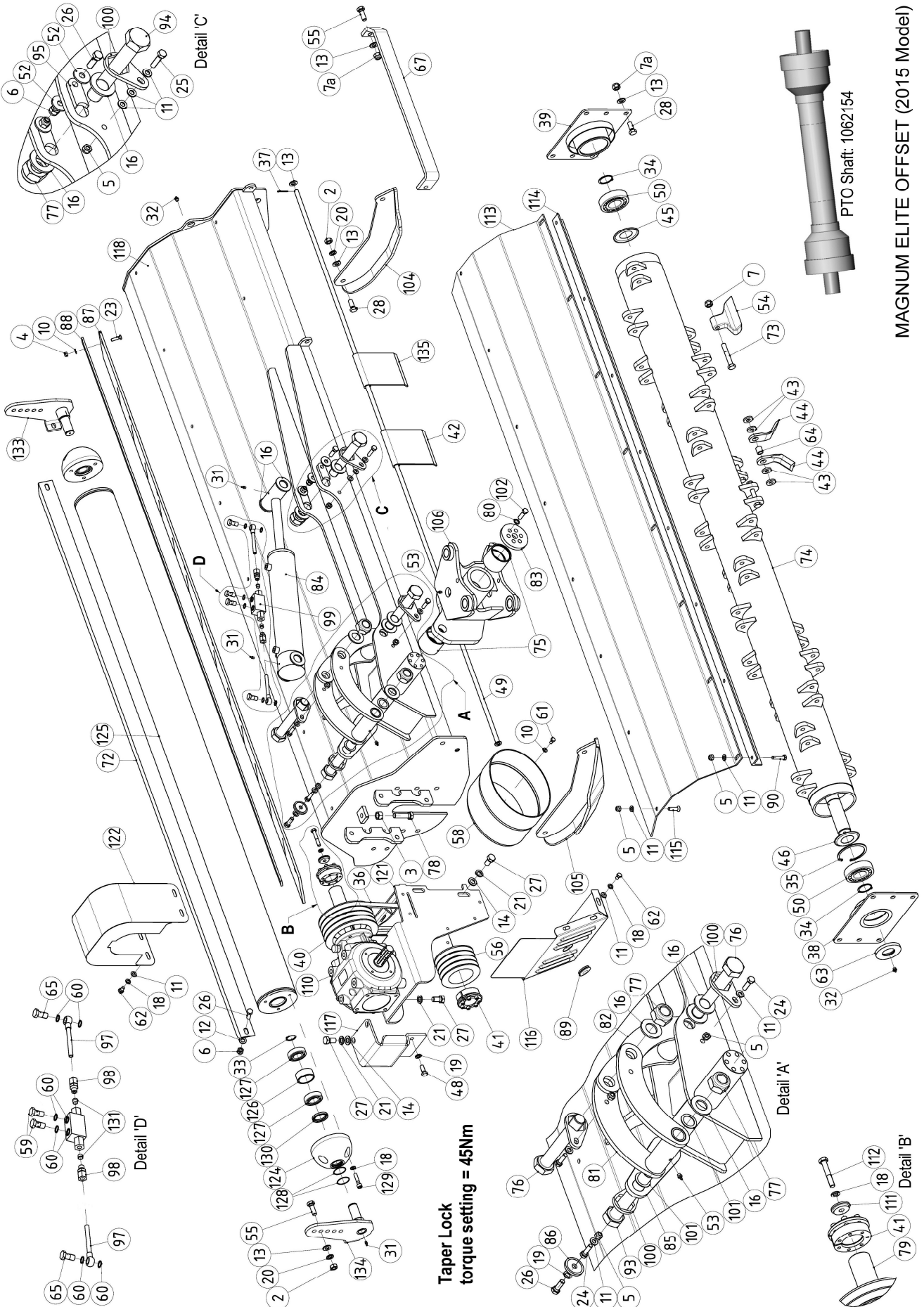


**MAGNUM Elite Offset**  
**Models 160 / 190 / 225**

**Parts Manual**

(Rev. 20.06.15)

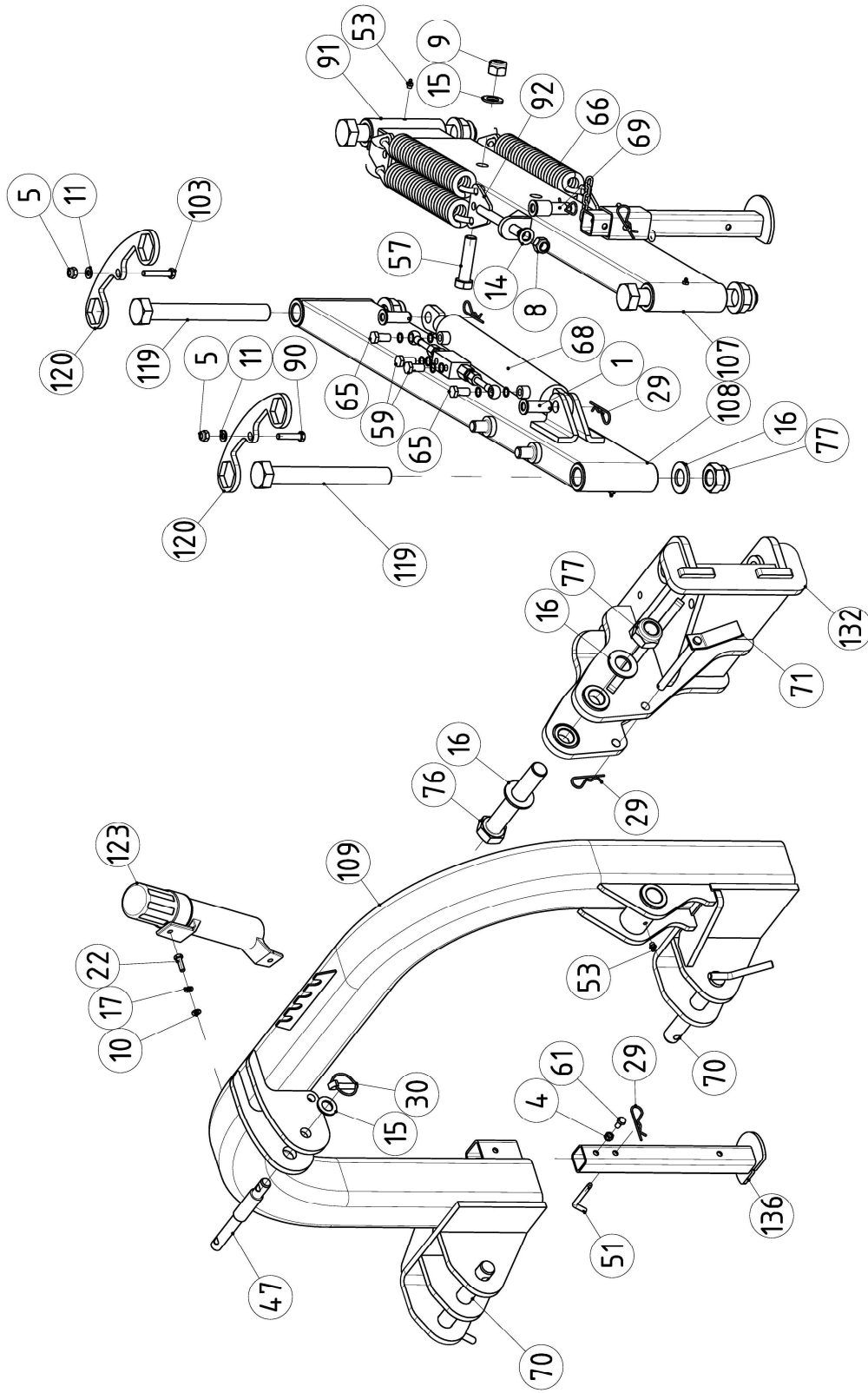
**Applicable for machines S/N: M1538189 to M1749503**



Taper Lock  
torque setting = 45Nm

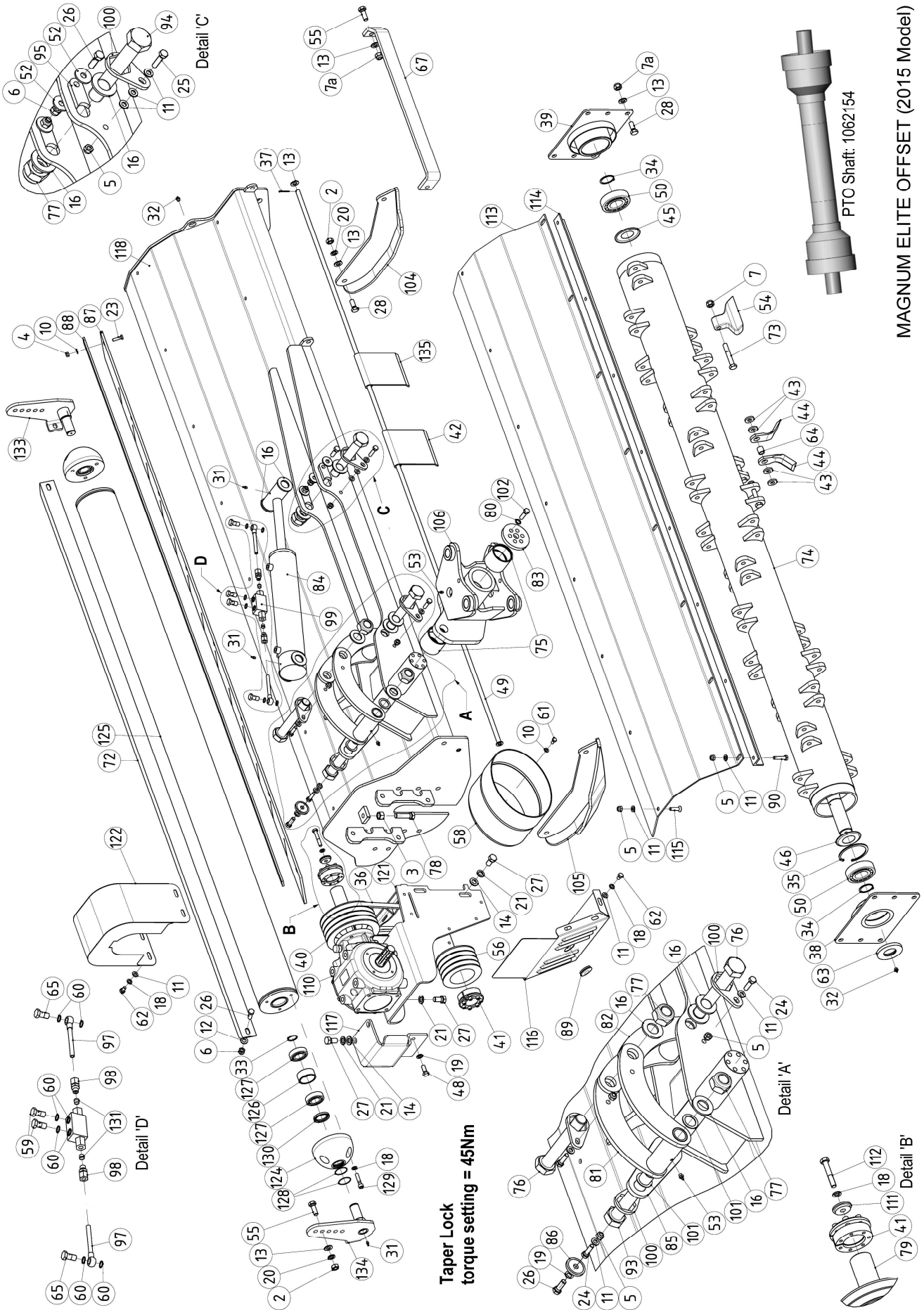
MAGNUM ELITE OFFSET (2015 Model)

| REF | DESCRIPTION        | PART No.  | QUANTITY |     |     |
|-----|--------------------|-----------|----------|-----|-----|
|     |                    |           | 160      | 190 | 225 |
| 1   | PIN                | 1061532   | 2        | 2   | 2   |
| 2   | NUT                | 1061121   | 8        | 8   | 8   |
| 3   | NUT                | 9113007   | 1        | 1   | 1   |
| 4   | NUT                | 9163004   | 8        | 9   | 10  |
| 5   | NUT                | 9163005   | 19       | 20  | 22  |
| 6   | NUT                | 9163006   | 4        | 4   | 4   |
| 7   | NUT                | 1062304   | 20       | 24  | 28  |
| 7a  | NUT                | 1061042   | 14       | 14  | 14  |
| 8   | NUT                | 9163007   | 2        | 2   | 2   |
| 9   | NUT                | 1061343   | 1        | 1   | 1   |
| 10  | WASHER             | 9100104   | 12       | 13  | 14  |
| 11  | WASHER             | 9100105   | 31       | 32  | 34  |
| 12  | WASHER             | 9100106   | 2        | 2   | 2   |
| 13  | WASHER             | 05.281.14 | 23       | 23  | 23  |
| 14  | WASHER             | 1000106   | 8        | 8   | 8   |
| 15  | WASHER             | 9100108   | 2        | 2   | 2   |
| 16  | WASHER             | 1062006   | 17       | 17  | 17  |
| 17  | SPRING WASHER      | 9100204   | 2        | 2   | 2   |
| 18  | SPRING WASHER      | 9100205   | 11       | 11  | 11  |
| 19  | SPRING WASHER      | 9100206   | 3        | 3   | 3   |
| 20  | SPRING WASHER      | 05.282.08 | 8        | 8   | 8   |
| 21  | SPRING WASHER      | 9100207   | 10       | 10  | 10  |
| 22  | BOLT               | 9313054   | 2        | 2   | 2   |
| 23  | BOLT               | 9313064   | 6        | 7   | 8   |
| 24  | BOLT               | 9313075   | 7        | 7   | 7   |
| 25  | BOLT               | 9313025   | 1        | 1   | 1   |
| 26  | BOLT               | 9313076   | 5        | 5   | 5   |
| 27  | BOLT               | 9313067   | 10       | 10  | 10  |
| 28  | BOLT               | 9313148   | 16       | 16  | 16  |
| 29  | SAFETY PIN         | 1061076   | 6        | 6   | 6   |
| 30  | PIN                | 1061097   | 1        | 1   | 1   |
| 31  | GREASE NIPPLE      | 1061554   | 2        | 2   | 2   |
| 32  | GREASE NIPPLE      | 1061079   | 2        | 2   | 2   |
| 33  | CIRCLIP            | 1061481   | 2        | 2   | 2   |
| 34  | CIRCLIP            | 1061174   | 2        | 2   | 2   |
| 35  | CIRCLIP            | 1061175   | 1        | 1   | 1   |
| 36  | BELT               | 21233.01  | 3        | 4   | 4   |
| 37  | SPLIT PIN          | 1061077   | 1        | 1   | 1   |
| 38  | BEARING CASING - L | 1061160   | 1        | 1   | 1   |
| 39  | BEARING CASING - R | 1061161   | 1        | 1   | 1   |
| 40  | PULLEY 180/80-3    | 1061164   | 1        | -   | -   |
|     | PULLEY 180/80-4    | 1061114   | -        | 1   | 1   |
| 41  | TAPERLOCK          | 1061163   | 2        | 2   | 2   |
| 42  | FLAP 140           | 1061171   | 11       | 12  | 15  |
|     | FLAP 50            | 1061482   | 1        | -   | -   |
|     | FLAP 70            | 1061170   | -        | 1   | -   |



MAGNUM ELITE OFFSET (2015 Model)

| REF | DESCRIPTION                      | PART No. | QUANTITY |     |     |
|-----|----------------------------------|----------|----------|-----|-----|
|     |                                  |          | 160      | 190 | 225 |
| 43  | WASHER                           | 1061036  | 80       | 96  | 112 |
| 44  | Y-BLADE (OPTION)                 | 1061034  | 40       | 48  | 56  |
| 45  | BEARING GUARD - L                | 1061176  | 1        | 1   | 1   |
| 46  | BEARING GUARD - R                | 1061177  | 1        | 1   | 1   |
| 47  | PIN                              | 1061168  | 1        | 1   | 1   |
| 48  | BOLT                             | 9213066  | 2        | 2   | 2   |
| 49  | FLAP BAR 160                     | 1062009  | 1        | -   | -   |
|     | FLAP BAR 190                     | 1061158  | -        | 1   | -   |
|     | FLAP BAR 225                     | 1061109  | -        | -   | 1   |
| 50  | BEARING                          | 1061173  | 2        | 2   | 2   |
| 51  | PIN                              | 1061083  | 2        | 2   | 2   |
| 52  | WASHER                           | 1062010  | 4        | 4   | 4   |
| 53  | GREASE NIPPLE                    | 1061310  | 8        | 8   | 8   |
| 54  | HAMMER                           | 1061100  | 20       | 24  | 28  |
| 55  | BOLT                             | 1061687  | 6        | 6   | 6   |
| 56  | PULLEY 130/80-3                  | 1061162  | 1        | -   | -   |
|     | PULLEY 130/80-4                  | 1061113  | -        | 1   | 1   |
| 57  | BOLT                             | 1062068  | 1        | 1   | 1   |
| 58  | PTO SHAFT SHIELD                 | 1061046  | 1        | 1   | 1   |
| 59  | BOLT                             | 1062016  | 4        | 4   | 4   |
| 60  | WASHER                           | 1062069  | 16       | 16  | 16  |
| 61  | BOLT                             | 9313034  | 6        | 6   | 6   |
| 62  | BOLT                             | 1062017  | 10       | 10  | 10  |
| 63  | WASHER                           | 1061120  | 1        | 1   | 1   |
| 64  | SLEEVE                           | 1061416  | 20       | 24  | 28  |
| 65  | BOLT                             | 1062019  | 4        | 4   | 4   |
| 66  | SPRING                           | 1062020  | 2        | 4   | 4   |
| 67  | FRAME GUARD                      | 1062022  | 1        | 1   | 1   |
| 68  | HYDRAULIC RAM                    | 1062023  | 1        | -   | -   |
|     | RAM 1062023 c/w VALVE ASSEMBLY   | 1062247  | 1        | -   | -   |
|     | HYDRAULIC RAM                    | 1062024  | -        | 1   | 1   |
|     | RAM 1062024 c/w VALVE ASSEMBLY   | 1062248  | -        | 1   | 1   |
| 69  | PIN                              | 1062025  | 1        | 1   | 1   |
| 70  | PIN                              | 1062026  | 2        | 2   | 2   |
| 71  | PIN                              | 1062027  | 1        | 1   | 1   |
| 72  | SCRAPER 160                      | 1062029  | 1        | -   | -   |
|     | SCRAPER 190                      | 1061452  | -        | 1   | -   |
|     | SCRAPER 225                      | 1061453  | -        | -   | 1   |
| 73  | BOLT                             | 1062302  | 20       | 24  | 28  |
| 74  | ROTOR 160 c/w HAMMERS & BEARINGS | 1062031  | 1        | -   | -   |
|     | ROTOR 190 c/w HAMMERS & BEARINGS | 1061543  | -        | 1   | -   |
|     | ROTOR 225 c/w HAMMERS & BEARINGS | 1061545  | -        | -   | 1   |
| 75  | BUSHING                          | 1062033  | 2        | 2   | 2   |
| 76  | BOLT                             | 1062035  | 2        | 3   | 3   |
|     | BOLT                             | 1062071  | 1        | -   | -   |



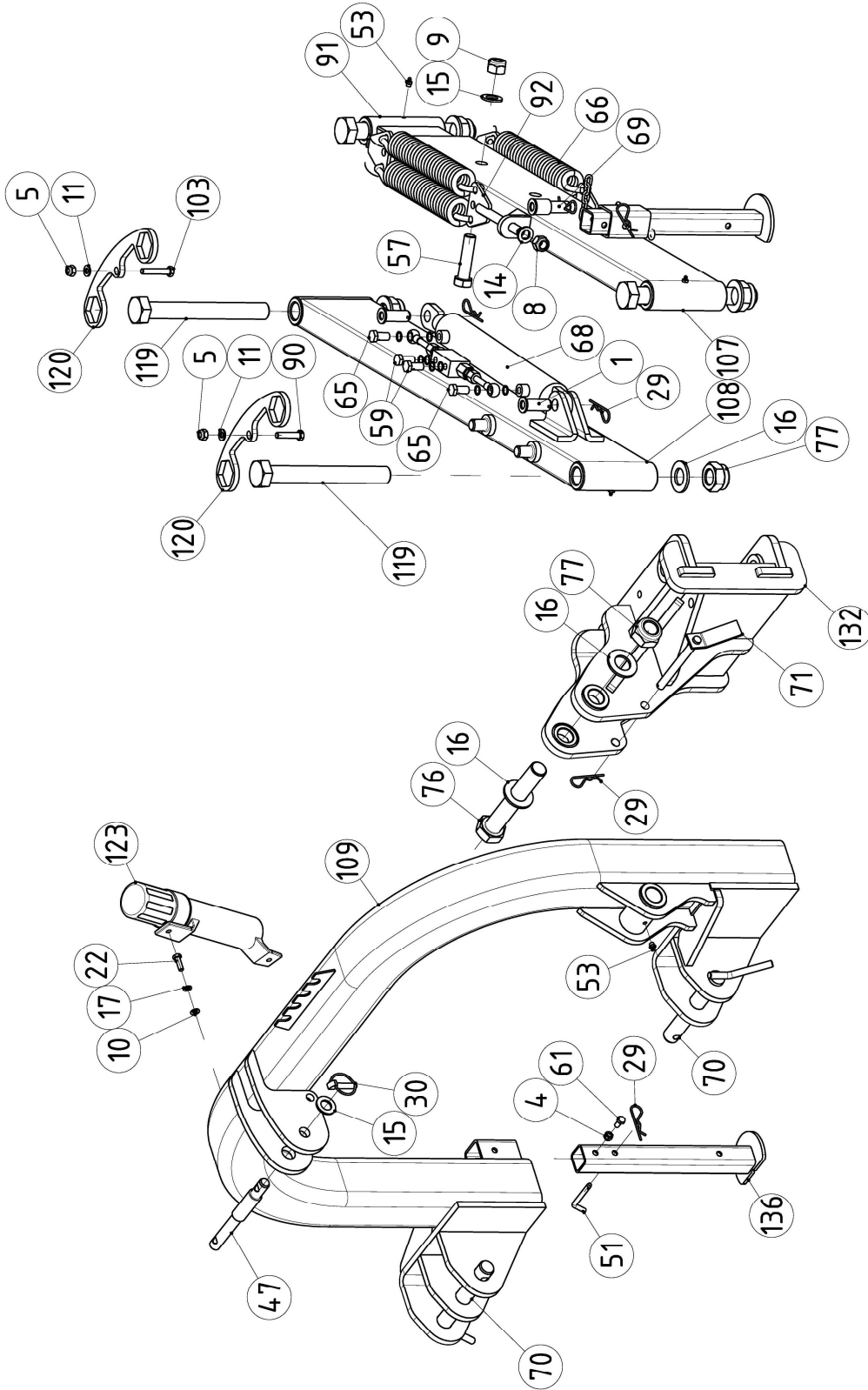
Taper Lock  
torque setting = 45Nm

PTO Shaft: 1062154

MAGNUM ELITE OFFSET (2015 Model)



| REF | DESCRIPTION                    | PART No. | QUANTITY |     |     |
|-----|--------------------------------|----------|----------|-----|-----|
|     |                                |          | 160      | 190 | 225 |
| 77  | NUT                            | 1062036  | 9        | 9   | 9   |
| 78  | BOLT                           | 9213127  | 1        | 1   | 1   |
| 79  | BUSHING                        | 1062003  | 1        | 1   | -   |
|     | BUSHING                        | 1062072  | -        | -   | 1   |
| 80  | WASHER                         | 1062037  | 6        | 6   | 6   |
| 81  | LEVER (RIGHT)                  | 1062039  | 1        | 1   | 1   |
| 82  | LEVER (LEFT)                   | 1062040  | 1        | 1   | 1   |
| 83  | WASHER                         | 1062041  | 1        | 1   | 1   |
| 84  | HYDRAULIC RAM                  | 1062042  | 1        | -   | -   |
|     | RAM 1062042 c/w VALVE ASSEMBLY | 1062249  | 1        | -   | -   |
|     | HYDRAULIC RAM                  | 1062043  | -        | 1   | 1   |
|     | RAM 1062043 c/w VALVE ASSEMBLY | 1062250  | -        | 1   | 1   |
| 85  | LEVER                          | 1062044  | 1        | 1   | 1   |
| 86  | WASHER                         | 1062045  | 1        | 1   | 1   |
| 87  | RUBBER GUARD 160               | 1062100  | 1        | -   | -   |
|     | RUBBER GUARD 190               | 1062099  | -        | 1   | -   |
|     | RUBBER GUARD 225               | 1062098  | -        | -   | 1   |
| 88  | BAR 160                        | 1062103  | 1        | -   | -   |
|     | BAR 190                        | 1062102  | -        | 1   | -   |
|     | BAR 225                        | 1062101  | -        | -   | 1   |
| 89  | CAP                            | 1062046  | 1        | 1   | 1   |
| 90  | BOLT                           | 9213095  | 6        | 7   | 9   |
| 91  | SUPPORT                        | 1062051  | 1        | 1   | 1   |
| 92  | SPRING TENSIONER               | 1062052  | 2        | 2   | 2   |
| 93  | BOLT                           | 1062053  | 1        | 1   | 1   |
| 94  | BOLT                           | 1062054  | 1        | 1   | 1   |
| 95  | FLOAT LOCK                     | 1062055  | 1        | 1   | 1   |
| 96  | VALVE                          | 1062251  | 2        | 2   | 2   |
| 97  | HYDRAULIC CONNECTION           | 1062252  | 4        | 4   | 4   |
| 98  | CONNECTION BUSHING             | 1062253  | 4        | 4   | 4   |
| 99  | VALVE (COMPLETE)               | 1062056  | 2        | 2   | 2   |
| 100 | PIN LOCK                       | 1062059  | 4        | 4   | 4   |
| 101 | WASHER                         | 1062155  | 2        | 2   | 2   |
| 102 | BOLT                           | 1062323  | 6        | 6   | 6   |
| 103 | BOLT                           | 1062129  | 1        | 1   | 1   |
| 104 | SKID (LEFT)                    | 1062254  | 1        | 1   | 1   |
| 105 | SKID (RIGHT)                   | 1062255  | 1        | 1   | 1   |
| 106 | CONNECTION BRACKET             | 1062256  | 1        | 1   | 1   |
| 107 | ARM (R)                        | 1062257  | 1        | 1   | 1   |
| 108 | ARM (L)                        | 1062258  | 1        | 1   | 1   |
| 109 | LINKAGE - 160                  | 1062259  | 1        | 1   | 1   |
|     | LINKAGE - 190 / 225            | 1062260  | 1        | 1   | 1   |
| 110 | GEARBOX                        | 1062261  | 1        | 1   | 1   |
| 111 | WASHER                         | 1062159  | 1        | 1   | 1   |
| 112 | BOLT                           | 9213125  | 1        | 1   | 1   |



MAGNUM ELITE OFFSET (2015 Model)



| REF | DESCRIPTION                    | PART No. | QUANTITY |     |     |
|-----|--------------------------------|----------|----------|-----|-----|
|     |                                |          | 160      | 190 | 225 |
| 113 | INNER SKIN - 160               | 1062162  | 1        | -   | -   |
|     | INNER SKIN - 190               | 1062161  | -        | 1   | -   |
|     | INNER SKIN - 225               | 1062160  | -        | -   | 1   |
| 114 | BAR 160                        | 1062165  | 1        | -   | -   |
|     | BAR 190                        | 1062164  | -        | 1   | -   |
|     | BAR 225                        | 1062163  | -        | -   | 1   |
| 115 | BOLT                           | 9213085  | 5        | 6   | 8   |
| 116 | BELT SHIELD LOWER              | 1062262  | 1        | 1   | 1   |
| 117 | GEARBOX GUARD                  | 1062167  | 1        | 1   | 1   |
| 118 | FRAME - 160                    | 1062263  | 1        | -   | -   |
|     | FRAME - 190                    | 1062264  | -        | 1   | -   |
|     | FRAME - 225                    | 1062265  | -        | -   | 1   |
| 119 | BOLT                           | 1062231  | 4        | 4   | 4   |
| 120 | LOCK BAR                       | 1062232  | 2        | 2   | 2   |
| 121 | GEARBOX SUPPORT                | 1062195  | 1        | 1   | 1   |
| 122 | BELT SHIELD UPPER              | 1062266  | 1        | 1   | 1   |
| 123 | DOCUMENT HOLDER                | 1062267  | 1        | 1   | 1   |
| 124 | ROLLER END                     | 1062268  | 2        | 2   | 2   |
| 125 | REAR ROLLER - 160              | 1062269  | 1        | -   | -   |
|     | REAR ROLLER - 190              | 1062270  | -        | 1   | -   |
|     | REAR ROLLER - 225              | 1062271  | -        | -   | 1   |
| 126 | SPACER                         | 1062272  | 2        | 2   | 2   |
| 127 | BEARING                        | 1062273  | 4        | 4   | 4   |
| 128 | WASHER                         | 1062274  | 4        | 4   | 4   |
| 129 | BOLT                           | 1062317  | 6        | 6   | 6   |
| 130 | WASHER                         | 1062275  | 2        | 2   | 2   |
| 131 | BUSH                           | 1062276  | 2        | 2   | 2   |
| 132 | CONNECTION BRACKET - 160       | 1062277  | 1        | -   | -   |
|     | CONNECTION BRACKET - 190 / 225 | 1062278  | -        | 1   | 1   |
| 133 | ROLLER BRACKET - LEFT          | 1062279  | 1        | 1   | 1   |
| 134 | ROLLER BRACKET - RIGHT         | 1062280  | 1        | 1   | 1   |
| 135 | FLAP                           | 1061098  | 1        | 1   | 1   |
| 136 | SUPPORT LEG                    | 1061632  | 2        | 2   | 2   |
| 137 | HYDRAULIC HOSE                 | 1062281  | *        | 1   | 1   |
| 138 | HYDRAULIC HOSE                 | 1062282  | *        | 1   | 1   |
| 139 | PTO SHAFT                      | 1062154  | 1        | 1   | 1   |

\* not illustrated

