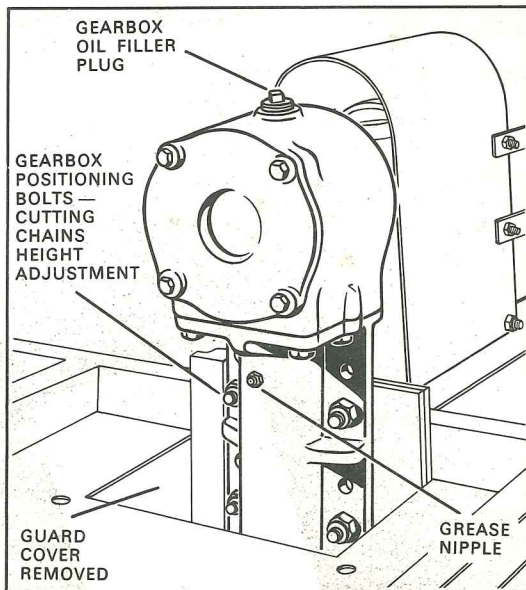


3. Land Clearance. The Jungle Buster will normally cut anything that a wheeled tractor can be driven over and will flail a broad track through the thickest brush-wood. The Jungle Buster can be used in reverse, but this should be done with care and it is almost essential to have a tractor fitted with a live P.T.O. shaft. This enables the operator to "edge up" to a tree or wall and at the same time the linkage can be used to lower the Jungle Buster on to the undergrowth. When cutting bulky material, the Jungle Buster can be tipped forward slightly by lowering the trailer wheel. This allows the cut material to pass through more easily. The gearbox bolts should be in the lowest position i.e., chains in their highest position and the chains must not be overloaded so that they are forced up to hit the frame.



SECTION 3 MAINTENANCE

Every 25 hours of heavy work or every 50 hours of light work:—

- Gear Box:** Check the oil level. Top up with S.A.E. 90 gear oil. Grease the bearing in the vertical shaft. A grease nipple (SW.729) in the gear box support (SW.702) is used for this purpose.
- Chains:** Check that all the chains are free to swing out. Check that the three retaining bolts (SW.740) are tight.
- P.T.O. Shaft:** Grease the telescopic portions.
- Trailer Wheel:** Grease the spindles.
- General:** Check that all nuts and bolts are tight.

SECTION 4 CHAIN REPLACEMENT

To remove the chains (SW.664) unscrew the 3 chain retaining bolts (SW.740). This allows the chain retaining cover (SW.704) and the chain retaining clip (SW.661) to which the chains are attached, to be removed (see page 5). When replacing worn chains always fit a complete set of 3. Do not run the Jungle Buster with any of the chains missing.

SECTION 5 SPARE PARTS

When ordering spare parts please make sure that you quote the model, part number and description.

WOLSELEY

JUNGLE BUSTER SWIPE

OPERATING & MAINTENANCE INSTRUCTIONS

APPLICATIONS NOTE

The Jungle Buster is suitable for Tractors with a P.T.O. output of 40 h.p. or above and fitted with category 1 or 2 hydraulic linkage.

The Jungle Buster is supplied with a P.T.O. shaft for 1.3/8" spline P.T.O. output. If it is wished to fit the Jungle Buster to a tractor with a 1.1/8" output spline, then an adaptor will be necessary. These adaptors are available from most Agricultural Machinery Suppliers.

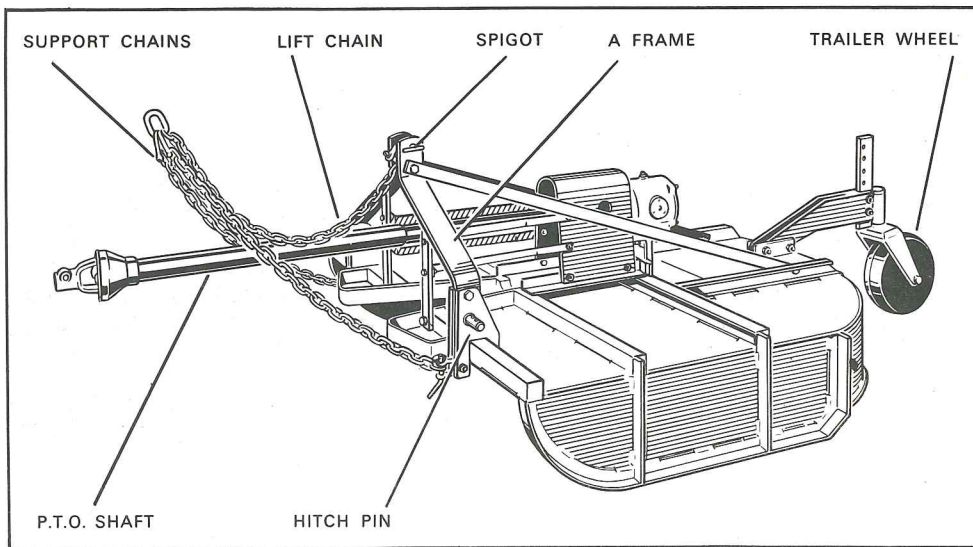
Category 2 hitch pins will be supplied unless otherwise specified.

IMPORTANT

Read Sections 1 and 2 of this booklet before using the Jungle Buster.

WOLSELEY

F W McConnel Limited
Temeside Works, Ludlow, Shropshire SY8 1JL
Tel: 0584 3131 Telex: 35313



Cutting Width (Max.) 54" (1370 mm)

Cutting Heights from 3" to 13" (76 to 330 mm)

Overall Dimensions: Length 82" (2083 mm)

Width 59" (1499 mm)

Depth including 'A' frame 38" (965 mm)

Shipping Dimensions (Case) — Unit Disassembled

Length 71" x width 63" x depth 24" (1803 x 1600 x 609 mm)

Gross weight 8 cwts. 3 qtrs. 12 lbs. (450 kgs)

Net weight 6 cwts. 3 qtrs. 12 lbs. (348 kgs)

Caution

Do not have the lift chain so slack that the P.T.O. shaft touches the frame when the Jungle Buster is lifted.

Do not let anybody stand too near when using the Jungle Buster.

Do not use a P.T.O. speed over 700 R.P.M.

Do not consistently overload the Jungle Buster.

Do not run the skids on the ground all the time.

Do not forget to check all nuts and bolts regularly.

Do not overload the Jungle Buster so that the cutting chains hit the top guard.

SECTION 1 PREPARATION FOR USE

Assembly:

Remove the gear box oil filler plug.

Fill the gearbox with S.A.E. 90 gear oil to the level of the breather (S.21560.A). Unscrew the breather to check the level.

Replace gearbox oil filler plug and breather.

Grease the telescopic portion of the P.T.O. shaft.

Fit the P.T.O. shaft to the gearbox.

Assemble the trailer wheel as illustrated, if necessary.

IMPORTANT

SUPPLEMENT TO SECTION I - PREPARATION FOR USE (Page 3)

On machines fitted with the latest Hi-ton Gear Box from Serial No: 1000, oil should be added and maintained to the level of the plug, situated in the hexagon plate on the input side of the gearbox and not to the breather, as stated in the Instruction Book, which refers to the earlier model now discontinued.

Attachment to Tractor:

Reverse the Tractor up to the Jungle Buster.

Connect the lower lift arms of the Tractor to the appropriate hitch pins. A stabiliser bar can be used in some cases. With category 1 linkage the $\frac{7}{8}$ " dia. hitch pins are reversed, i.e., the nut is on the outside of the 'A' frame.

Fit the lift chain to the upper hitch on the Tractor and on to the 'A' frame on the Jungle Buster. This chain should be slack when the Jungle Buster is in the working position and the trailer wheel is on the ground.

Fit the two support chains if required. These chains are supplied to keep the front of the Jungle Buster at a constant height from the ground and can be shackled to any suitable place on the Tractor or to the big link on the lift chain.

The support chains need not be used on a Tractor that has a fixed mechanical or hydraulic height control.

Fit the P.T.O. shaft to the Tractor P.T.O.

Check that all nuts and bolts are tight including the three cutting chain retaining bolts which are tightened with the Allen key provided (see Section 4).

When the machine has been operated initially for half-an-hour check these 3 bolts again.

SECTION 2 USE

1. Rowcrop and Field Work, i.e. Sprouts, potato haulm, kale stalks, etc. With these crops the load on the machine is normally light and the skids run near the ground. This gives the maximum pulverisation which is required prior to ploughing, etc.
2. Pasture Topping. This work can vary from thistle cutting to heavy grass cutting. The chains must be able to swing out all the time and they will not cut successfully if the machine is overloaded.