



CY60/72

Rev 05-07

S/N CY60 21480 - Current
S/N CY72 22584 - Current

Part No. 00757419P

PART'S MANUAL

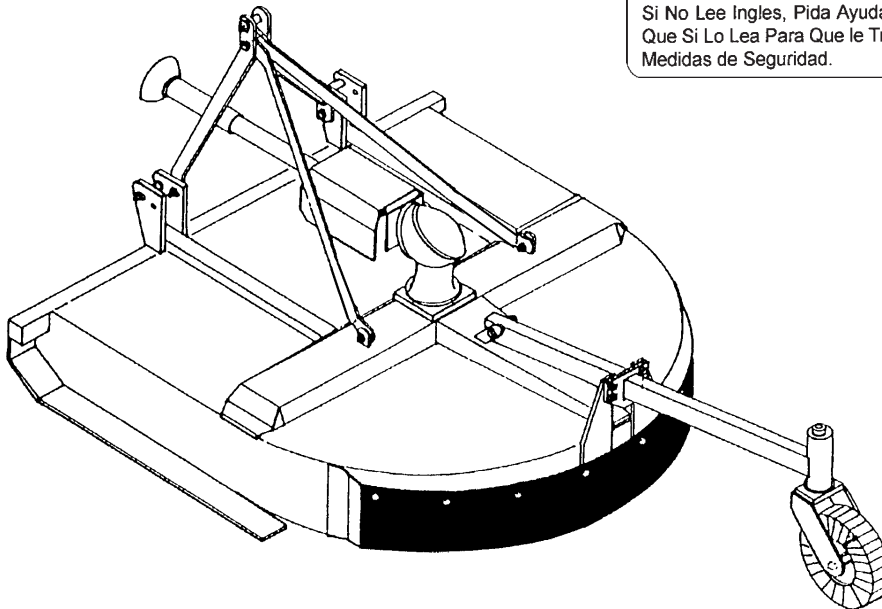


An Operator's Manual was shipped with the equipment in the Manual Canister. This Operator's Manual is an integral part of the safe operation of this machine and must be maintained with the unit at all times. **READ, UNDERSTAND, and FOLLOW** the Safety and Operation Instructions contained in this manual before operating the equipment. If the Operator's Manual is not with the equipment, contact your dealer or Servis-Rhino (800-446-5158) to obtain a Free copy before operating the equipment.

ATENCIÓN!

LEA EL INSTRUCTIVO

Si No Lee Ingles, Pida Ayuda a Alguien
Que Si Lo Lea Para Que le Traduzca las
Medidas de Seguridad.



RHINO®

1020 S. Sangamon Ave.
Gibson City, IL 60936
800-446-5158

Email: parts@servis-rhino.com

© 2007 Alamo Group Inc.



TO THE OWNER/OPERATOR/DEALER

All implements with moving parts are potentially hazardous. There is no substitute for a cautious, safe-minded operator who recognizes the potential hazards and follows reasonable safety practices. The manufacturer has designed this implement to be used with all its safety equipment properly attached to minimize the chance of accidents.

BEFORE YOU START!! Read the safety messages on the implement and shown in your manual.
Observe the rules of safety and common sense!



DANGER

FAILING TO FOLLOW SAFETY MESSAGES AND OPERATING INSTRUCTIONS CAN CAUSE SERIOUS BODILY INJURY OR EVEN DEATH TO OPERATOR AND OTHERS IN THE AREA.

<p>1.</p>	<p>2. NO RIDERS, NO CHILDREN OPERATORS</p>	<p>3. USE SAFETY SHOES, HARD HAT, SAFETY GLASSES, SEAT BELTS, & ROPS</p>	<p>4. BLOCK UP SECURELY BEFORE WORKING UNDER.</p>
-----------	--	--	---

1. Study and understand Operator's Manuals, Safety Signs, and Instructional Decals for tractor & flail mower to prevent misuse, abuse, & accidents. Practice before operating mower in a confined area or near passersby.

- Learn how to stop engine suddenly in an emergency. Be alert for passersby and especially children.
2. Allow no children on or near implement or tractor. Allow no riders on tractor or implement. Falling off can cause serious injury or death from being runover by tractor or mower or contact with Flail Mower Blades.
3. Operate only with tractor having Roll-Over Protective Structure (ROPS) and with seatbelt fastened securely and snugly to prevent injury and possible death from falling off or tractor overturn. Personal Protective Equipment such as Hard Hat, Safety Glasses, Safety Shoes, and Ear Plugs are recommended.
4. Block up or support raised machine and all lifted components securely before putting hands or feet under or working underneath any lifted component to prevent crushing injury or death from sudden dropping or inadvertent operation of controls. Make certain that area is clear before lowering or folding.
5. Before transporting, put Lift Lever in detent or full-lift position. Install Transport Safety Devices securely on folding implements. Slow down when turning and on hillsides.
- Install **Restrictor in folding circuit to slow down lowering and unfolding if action is faster than is desirable.
6. Make certain that SMV sign, Warning Lights, and Reflectors are clearly visible. Follow local traffic codes.
7. Never operate with Flail Mower or Folding Section raised if passersby, bystanders or traffic are in the area to reduce possibility of injury or death from objects thrown by Blades under Shields or implement structure.
8. Before dismounting, secure flail mower in transport position or lower to ground.
- Put tractor in park or set brake, disengage PTO, stop engine, remove key, and wait until noise of rotation has ceased to prevent entanglement in rotating parts which may cause injury or death.
 - Never mount or dismount a moving vehicle. Crushing from runover may cause injury or death.

<p>5. TRANSPORT SAFELY, LOCK UP.</p>	<p>6. USE SMV, LIGHTS, & REFLECTORS.</p>	<p>7. DO NOT OPERATE WITH MOWER OR WING RAISED.</p>	<p>8. DO NOT MOUNT OR DISMOUNT WHILE MOVING.</p>
--------------------------------------	--	---	--

WARRANTY INFORMATION

002369

Read and understand the complete Warranty Statement found in this Manual. Fill out the Warranty Registration Form in full and return it within 30 Days. Make certain the Serial Number of the Machine is recorded on the Warranty Card and on the Warranty Form that you retain. The use of "will-fit" parts will void your warranty and can cause catastrophic failure with possible injury or death.

PARTS SECTION

PARTS ORDERING GUIDE

The following instructions are offered to help eliminate needless delay and error in processing purchase orders for the equipment in this section.

1. The Parts Section is prepared in logical sequence and grouping of parts that belong to the basic machine featured in this manual. Part Numbers and Descriptions are given to help locate the parts and quantities required.
2. The Purchase Order must include the name and address of the person or organization ordering the parts, who should be charged, and if possible, the serial number of the machine for which the parts are ordered.
3. The Purchase Order must clearly list the quantity of each part, the complete and correct part number (be sure to include all periods), and the basic name of the part.
4. The Manufacturer reserves the right to substitute parts where applicable.
5. Some parts are unlisted items which are special production items not normally stocked and are subject to special handling. Request a quotation for such parts before sending a Purchase Order.
6. The Manufacturer reserves the right to change prices without prior notice.

NOTE: Please refer to The Safety Section in the front of this Manual for the proper Part Number when ordering Replacement Safety Decals.



For maximum safety and to guarantee optimum product reliability, always use genuine Servis-Rhino Parts. The use of inferior replacement parts may cause premature or catastrophic failure which could result in serious injury or death. Direct any questions regarding parts to:

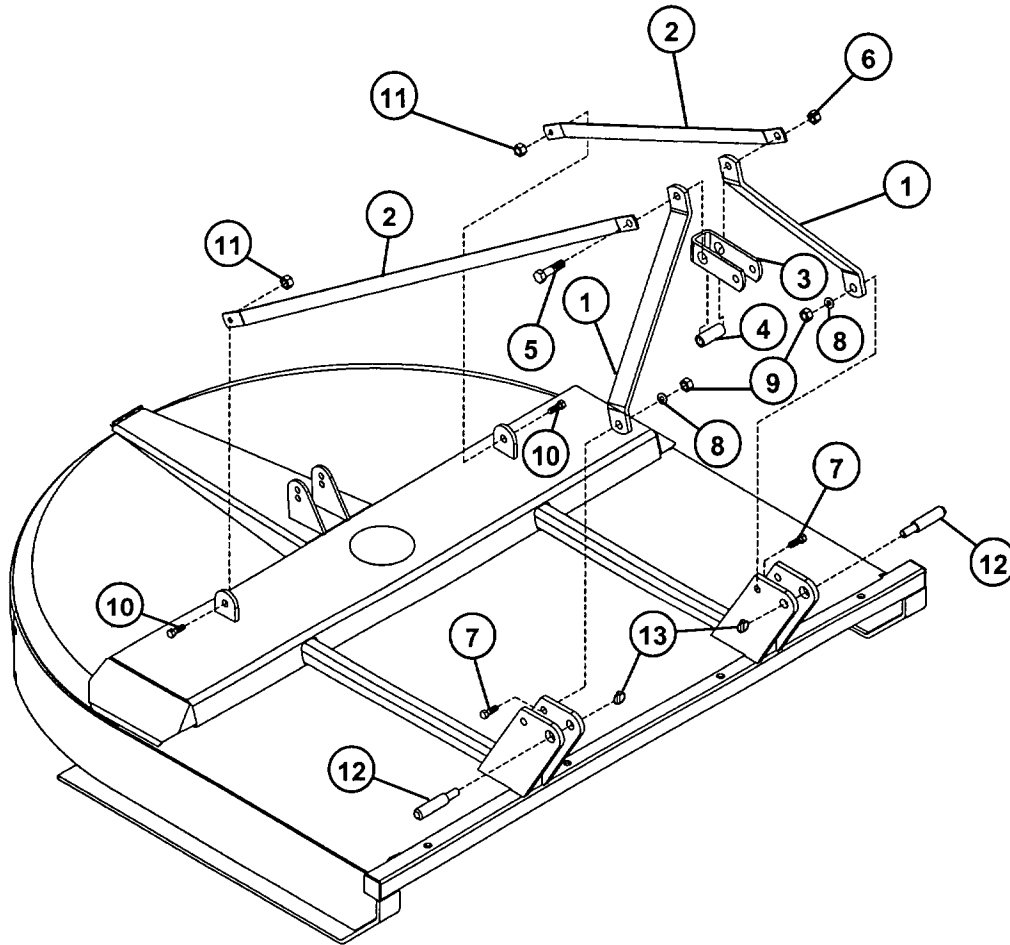


RHINO®
1020 S. Sangamon Ave.
Gibson City, IL 60936
800-446-5158
Email: parts@servis-rhino.com

PART NAME INDEX

A-FRAME ASSEMBLY Rev 11-06	4
BLADE PAN ASSEMBLY CY 60 & 72	5
CHAIN GUARD ASSEMBLY - FRONT - CY 60 & 72 Rev 11-06	35
CHAIN GUARD ASSEMBLY - REAR - CY 60 & 72 Rev 11-06	34
DEFLECTOR ASSEMBLY - FRONT - CY60 Rev 11-06	36
DEFLECTOR ASSEMBLY - FRONT - CY72 Rev 11-06	37
DEFLECTOR ASSEMBLY - REAR - CY 60 & 72 Rev 11-06	38
DRIVELINE ASSEMBLY 1000 RPM - CY60 Rev 03-05	8
DRIVELINE ASSEMBLY 1000 RPM - CY72 Rev 04-05	10
DRIVELINE ASSEMBLY 540 RPM - CY60 Rev 03-05	6
DRIVELINE ASSEMBLY 540 RPM - CY72 Rev 11-06	11
GEARBOX ASSEMBLY (1000 RPM) - CY60 Rev 07-04	16
GEARBOX ASSEMBLY (540 RPM) - CY60	14
GEARBOX ASSEMBLY (540 RPM) - CY60 Rev 11-06	12
GEARBOX ASSEMBLY - CY72 - S/N 22349 AND BELOW	18
GEARBOX ASSEMBLY - CY72 - S/N 22350 AND ABOVE Rev 03-05	20
OFFSET ADAPTER (3-POINT) - CY 60 & 72	27
RELIEF ASSEMBLY - HYDRAULIC	28
SAFETY DECAL SHEETS	39
SHIELD ASSEMBLY - GEARBOX CY60 Rev 11-06	24
SHIELD ASSEMBLY - GEARBOX CY72 - S/N 22349 AND BELOW	25
SHIELD ASSEMBLY - GEARBOX CY72 - S/N 22350 AND ABOVE Rev 11-06	26
SKID SHOE ASSEMBLY	33
SLIP CLUTCH - CY72 Rev 11-06	22
SLIP CLUTCH ASSEMBLY - CY60 Rev 03-05	23
TAILWHEEL ASSY S/N CY60 21479 - CY72 22583 -Below Rev 05-07	32
TAILWHEEL ASSY S/N CY60 21480 - CY72 22584 -Current Pub 08-05	31
TAILWHEEL MOUNTING ASSY S/N CY60 21479 - CY72 22583 -Below Pub 08-05	30
TAILWHEEL MOUNTING ASSY S/N CY60 21480 - CY72 22584 -Current Pub 08-05	29

A-FRAME ASSEMBLY Rev 11-06

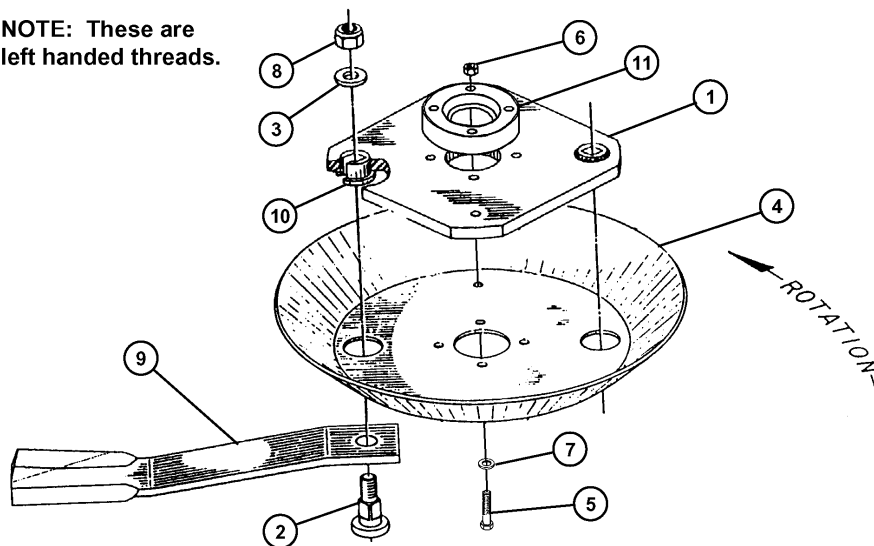


ITEM	PART NO.	QTY.	DESCRIPTION
1	00773183	2	BAR A-FRAME FRONT
2	00773189	2	BAR A-FRAME REAR BRACE
	00773190	2	BAR REAR BRACE A-FRAME
3	00757949	1	LINK, TOP
4	00757953	1	BUSHING 1-1/4X7/32X3 A-FRAME
5	02025700	1	HEXB 3/4 NC 6 PL5
6	00037200	1	NUT 3/4-NC TOPLOCK GRC PL
7	02845500	2	HEXB 5/8 NC 2 PL5
8	00756077	2	WASHER, 5/8 HARDENED
9	00695100	2	LOCKNUT TOPLOCK 5/8NC PLB
10	02675800	2	HHCS 5/8-11UNC 1-1/2 PL5
11	00695100	2	LOCKNUT TOPLOCK 5/8NC PLB
12	4410212A	2	PIN WRIST, 7/8 DIA.
	4410212AS	2	PIN, WRIST 1-1/8 DIA CAT II
13	2196	2	CLIP (LYNCH PIN), 13/32 DIA.

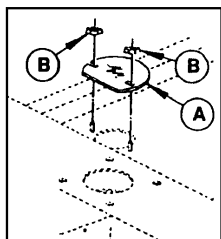
CY60/72 (Aug-05) S/N CY60 21480 - CY72 22584 - Current Rev 05-07

BLADE PAN ASSEMBLY CY 60 & 72

NOTE: These are left handed threads.



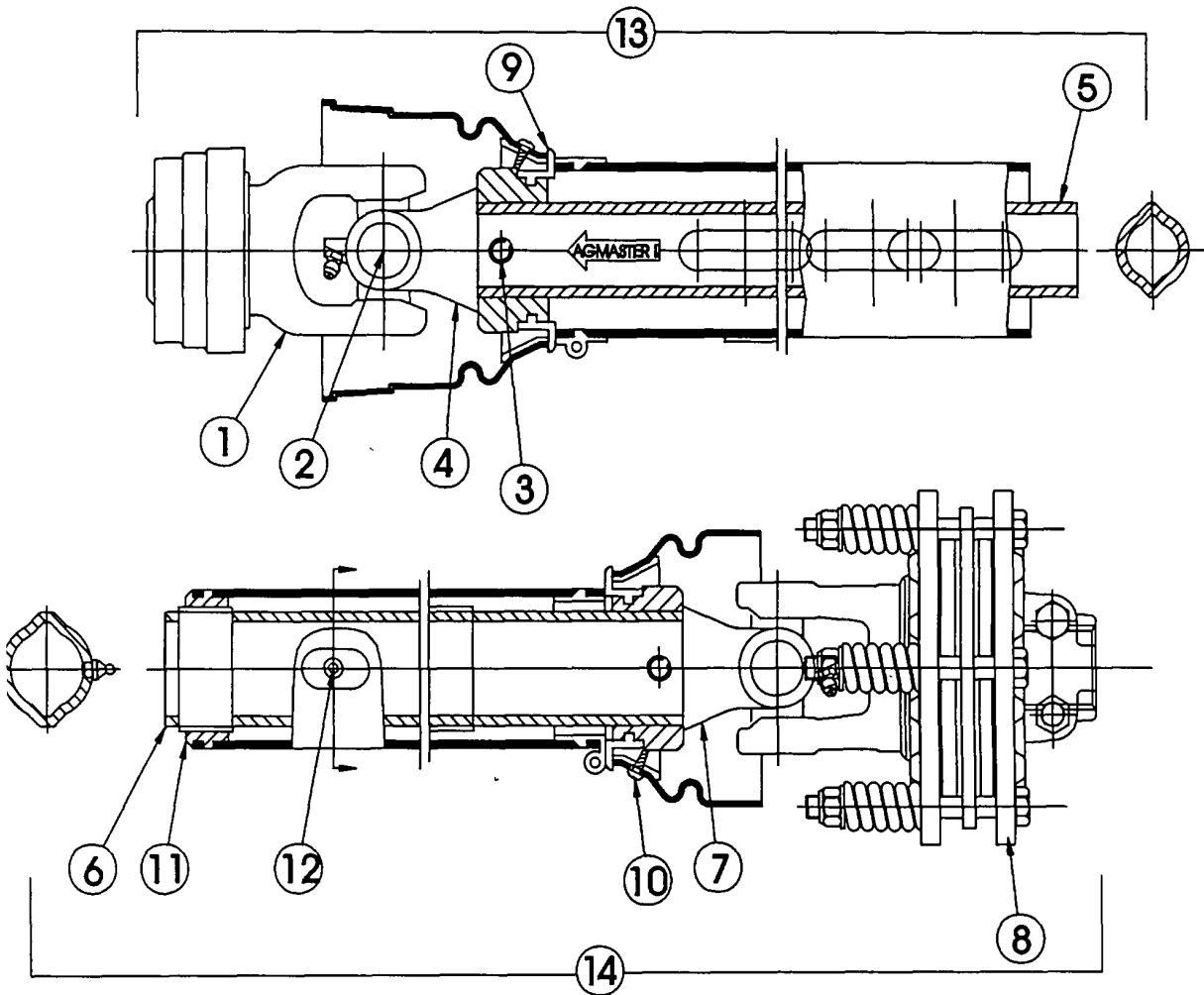
* Shoulder Bolt Bushing is replaceable in item #1 by cutting old part out and welding new part in carefully with (E-7018) low-hydrogen rods.



ITEM	PART NO.	CY60	CY72	DESCRIPTION
1	582011	-	1	BLADE CARRIER PLATE, WLDMT
	622011	1	-	BLADE CARRIER PLATE, WLDMT
2	571044	2	2	SHOULDER BOLT (L.H. THDS)
3	571045	2	2	SHOULDER BOLT WASHER
4	622012	1	-	BLADE CARRIER PAN
	582012	-	1	BLADE CARRIER PAN
5	7AH5101816	2	2	BOLT GR5
6	00749136	2	2	LOCKNUT
7	00756077	2	2	WASHER, HEAT TREATED
8	5GL16140	2	2	LOCKNUT (L.H. THREADS)
9	0582010330	-	2	BLADE, FAN CY72
	00762434	-	2	BLADE, FAN CY72 (5/8" CONTRACTORS SPECIAL)
	582013	-	2	BLADE, FLAT CY72 (NOT SHOWN)
	0622010330	2	-	BLADE, FAN CY60
	0652010030	2	-	BLADE, FLAT CY60 (NOT SHOWN)
10	571042B	2	2	SHOULDER BOLT BUSHING
	B571044	2	2	SHOULDER BOLT & LOCKNUT
11	00775595	1	1	SPACER, BLADE
A	57101211	-	-	COVER PLATE FOR ACCESS HOLE
B	5F6160	2	2	NUT WING 3/8 NC

DRIVELINE ASSEMBLY 540 RPM - CY60 Rev 03-05

Order replacement parts from this page if the profile of your driveline is lemon shaped.

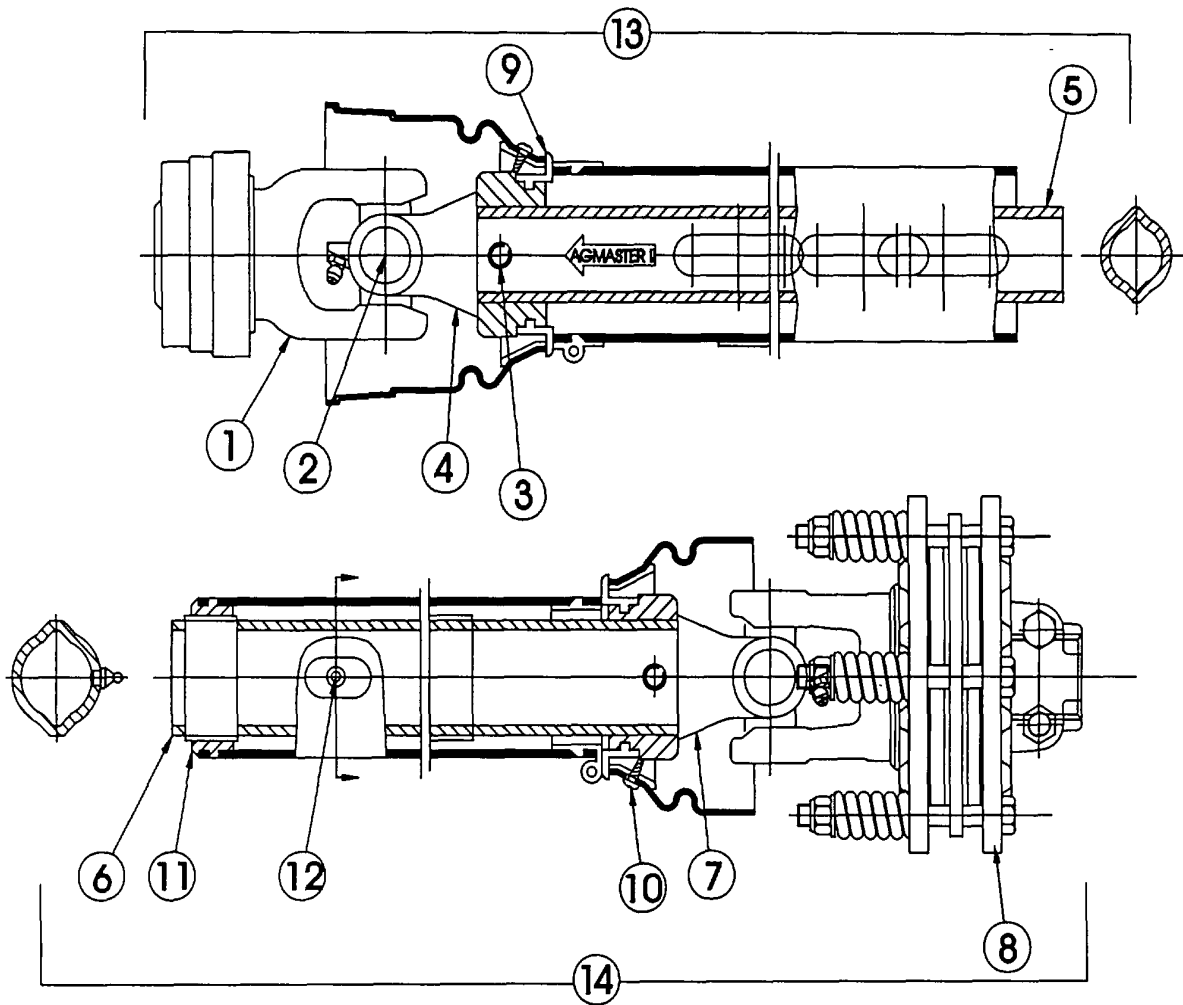


DRIVELINE ASSEMBLY 540 RPM - CY60 Rev 03-05

ITEM	PART NO.	QTY.	DESCRIPTION
	00775385	-	540 RPM DRIVELINE ASSEMBLY
1	00775353	1	YOKE
2	W279R	2	CROSS & BEARING KIT
3	8384	2	SPRING PIN
4	00775317	1	INBOARD YOKE
5	7413	1	INNER PROFILE
6	00775377	1	PROFILE & SLEEVE W.A.
7	00775318	1	INBOARD YOKE
8	00775331	1	FRICTION CLUTCH
9	8393	2	BEARING RING
10	4797	2	SCREW
11	8974	1	SUPPORT BEARING
12	1416601	1	ZERK
13	00775388	1	OUTER SHIELD HALF
14	00775389	1	INNER SHIELD HALF
15	00767954	1	YOKE QD KIT (IN ITEM 1)

DRIVELINE ASSEMBLY 1000 RPM - CY60 Rev 03-05

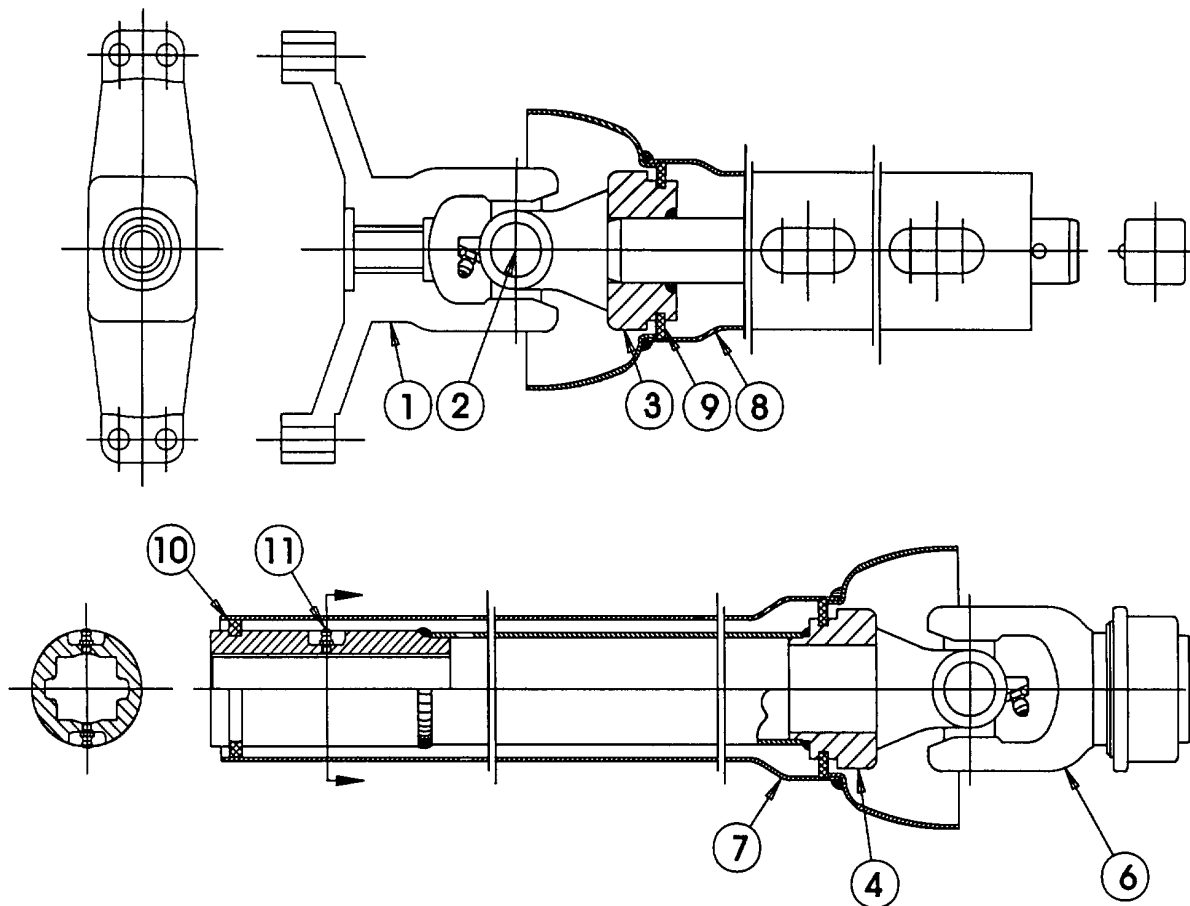
Order replacement parts from this page if the profile of your driveline is lemon shaped.



DRIVELINE ASSEMBLY 1000 RPM - CY60 Rev 03-05

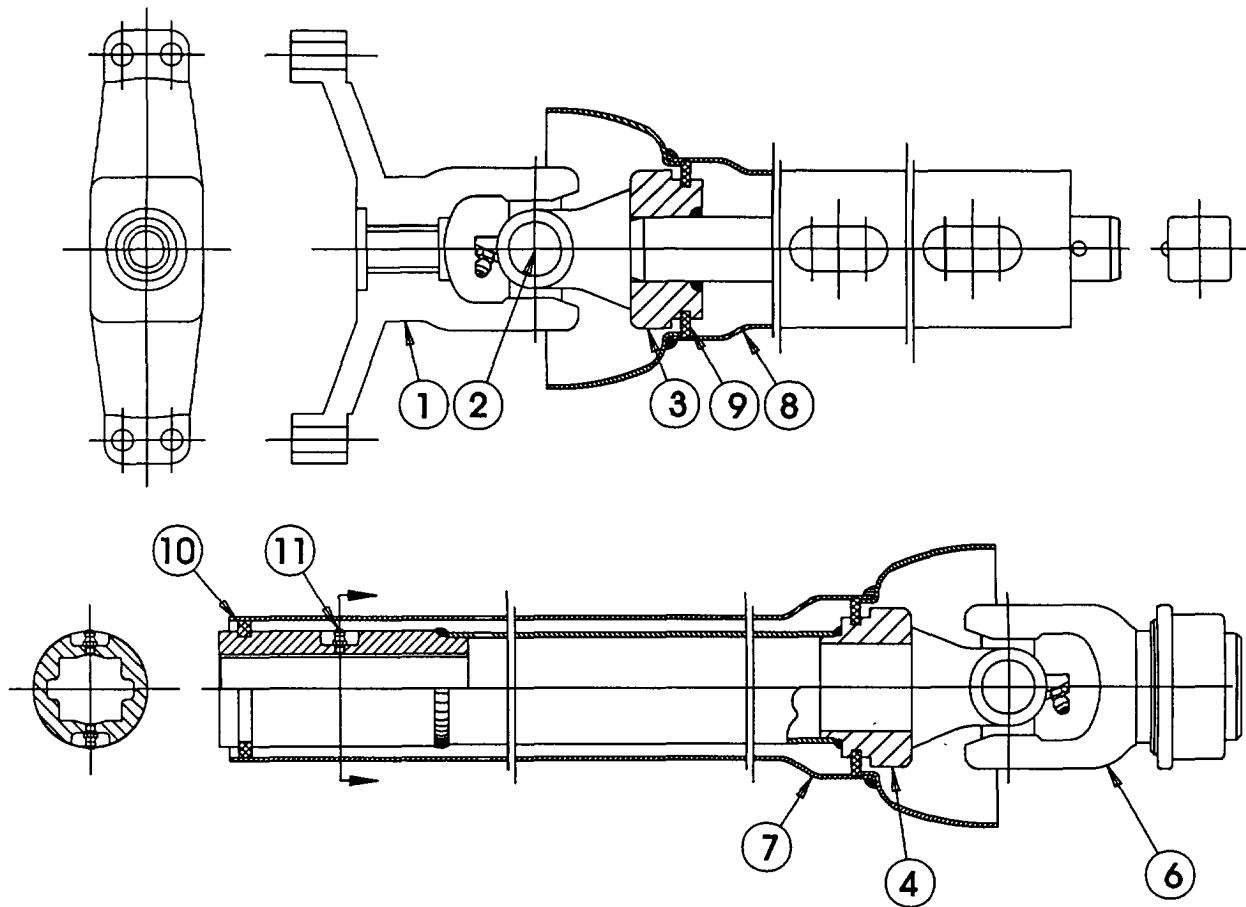
ITEM	PART NO.	QTY.	DESCRIPTION
	00775390	-	1000 RPM DRIVELINE ASSEMBLY
1	00761762	1	YOKE
2	W279R	2	CROSS & BEARING KIT
3	8384	2	SPRING PIN
4	00775317	1	INBOARD YOKE
5	7413	1	INNER PROFILE
6	00775377	1	PROFILE & SLEEVE W.A.
7	00775318	1	INBOARD YOKE
8	00775331	1	FRICTION CLUTCH
9	8393	2	BEARING RING
10	4797	2	SCREW
11	8974	1	SUPPORT BEARING
12	1416601	1	ZERK
13	00775388	1	OUTER SHIELD HALF
14	00775389	1	INNER SHIELD HALF
15	00767953	1	YOKE QD KIT (IN ITEM 1)

DRIVELINE ASSEMBLY 1000 RPM - CY72 Rev 04-05



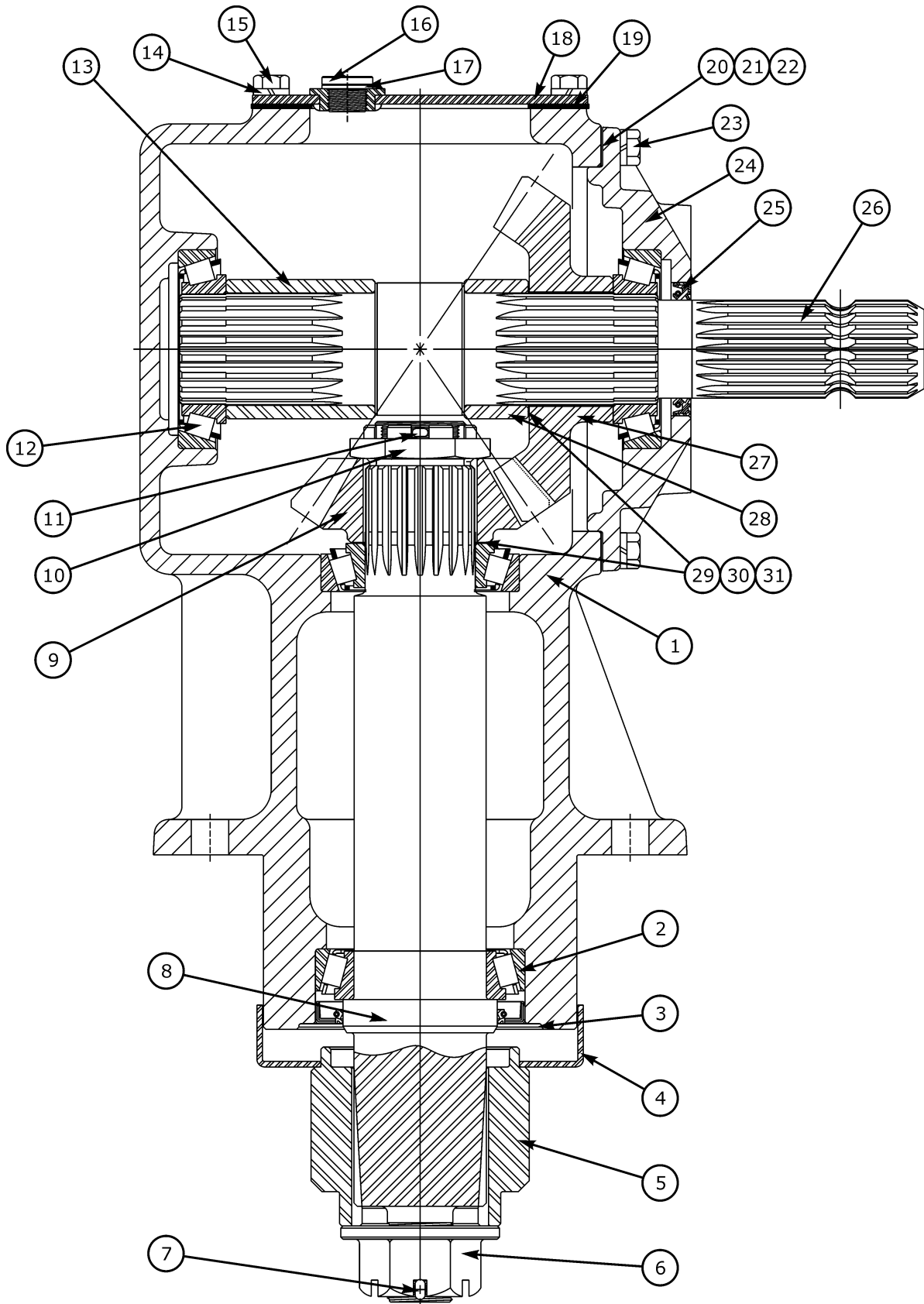
ITEM	PART NO.	QTY.	DESCRIPTION
	00775293	-	1000 RPM DRIVELINE ASSEMBLY
1	W824A	1	YOKE
2	W840	2	CROSS & BEARING KIT
3	W816F	1	INNER YOKE & SHAFT
4	00769034	1	TUBE & SLEEVE ASSEMBLY
6	W825A	1	YOKE
7	00769035	1	INNER SHIELD TUBE ASSEMBLY
8	W811S	1	OUTER SHIELD TUBE ASSEMBLY
9	00759212	4	SHIELD BEARING
10	00760519	1	BEARING RING
11	00752670	2	ZERK
12	8391	1	YOKE Q.D. KIT (IN ITEM 6)
13	W805F6	1	HALF SHAFT ASSY. (IMPLEMENT HALF)
14	00768946	1	HALF SHAFT ASSY. (TRACTOR HALF)

DRIVELINE ASSEMBLY 540 RPM - CY72 Rev 11-06



ITEM	PART NO.	QTY.	DESCRIPTION
	00775294	-	540 RPM DRIVELINE ASSEMBLY
1	W824A	1	YOKE
2	W840	2	CROSS & BEARING KIT
3	W816F	1	INNER YOKE & SHAFT
4	W812A	1	TUBE & SLEEVE ASSEMBLY
6	W821A	1	YOKE
7	W815R	1	INNER SHIELD TUBE ASSEMBLY
8	W811S	1	OUTER SHIELD TUBE ASSEMBLY
9	00759212	4	SHIELD BEARING
10	00760519	1	BEARING RING
11	00752670	2	ZERK
12	8391	1	YOKE Q.D. KIT (IN ITEM 6)
13	W805F6	1	HALF SHAFT ASSY. (IMPLEMENT HALF)
14	W802B	1	HALF SHAFT ASSY. (TRACTOR HALF)

GEARBOX ASSEMBLY (540 RPM) - CY60 Rev 11-06



CY60/72 (Aug-05) S/N CY60 21480 - CY72 22584 - Current Rev 05-07

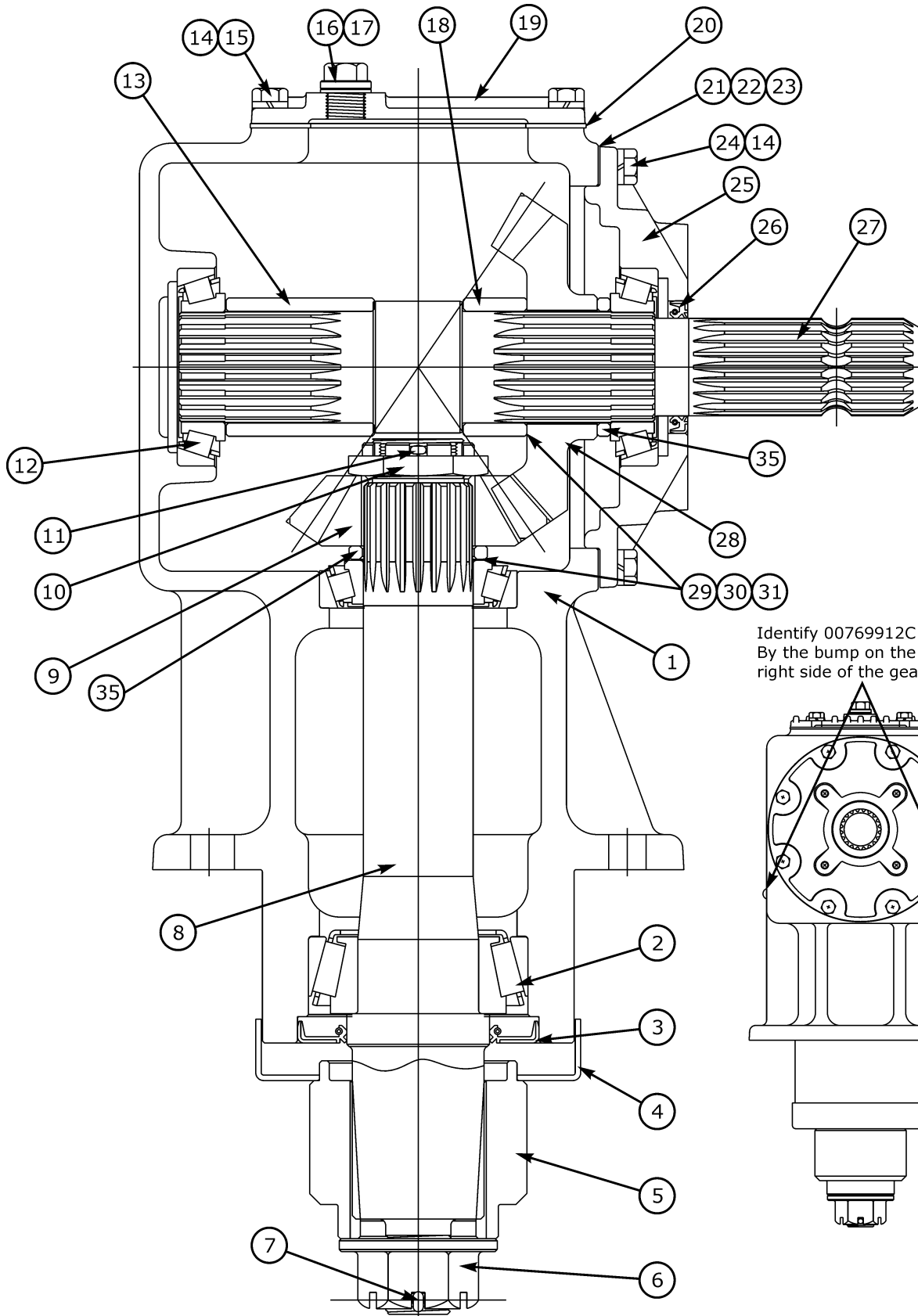
©2007 Alamo Group Inc.

Parts Section - 12

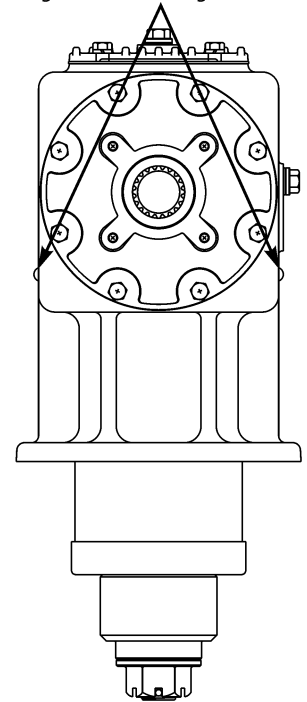
GEARBOX ASSEMBLY (540 RPM) - CY60 Rev 11-06

ITEM	PART NO.	QTY.	DESCRIPTION
	00769912A	1	GEAR BOX AG100 1:1.46SU,CW/CCW
1	00774063	1	HOUSING SIDE G/BOX
2	00774061	1	BEARING ASSEMBLY
3	00774060	1	OIL SEAL, VERTICAL SHAFT
4	00770727	1	PROTECTOR, SEAL
5	00771227	1	HUB W/2-7/8 SHOULDER
6	00771226	1	NUT,M30-P2.00 FLANGED SLOTTED
7	01422502	1	PIN-COTTER 3/16 X 2-1/2
8	00774062	1	VERTICAL OUTPUT SHAFT
9	00770736	1	PINION 13 TOOTH
10	00762121	1	NUT,HEX THIN SLOTTED
11	00770421	1	PIN, COTTER 3.6MM x 65MM
12	00769938	3	BEARING #30210
13	00770731	1	SUPER-AG-100 INPUT SHAFT SPCR
14	00755954	12	LOCKWASHER M10
15	00754761	4	SHIM
16	00770737	2	LEVEL PLUG M18 X 1.5
17	00769321	3	WASHER,SEALING,17.8M
18	00770732	1	INSPECTION COVER
19	00770733	1	INSPECTION COVER GASKET
20	00758646	Var.	SHIM, ADJUSTMENT - .004
21	00758647	Var.	SHIM, ADJUSTMENT - .010
22	00758648	Var.	SHIM ,ADJUSTMENT - .020
23	00758659	8	HEXB METRIC 10-P1.5 - 32MM PL5
24	00770734	1	INPUT CAP
25	00773640	1	SEAL THRU SHAFT
26	00770735	1	SUPER-AG-100 INPUT SHAFT
27	00770729	1	GEAR 19 TOOTH
28	00758657	1	SPACER,INPUT SHAFT
29	00758667	Var.	SHIM .012 2.44 O.D.
30		Var.	SHIM (0.40)
31	00758668	Var.	SHIM,0.020 2.44 O.D.
32	00762114	1	PLUG,VENT W/WASHER 18M-P1.5

GEARBOX ASSEMBLY (540 RPM) - CY60



Identify 00769912C Gearbox
By the bump on the left and
right side of the gearbox

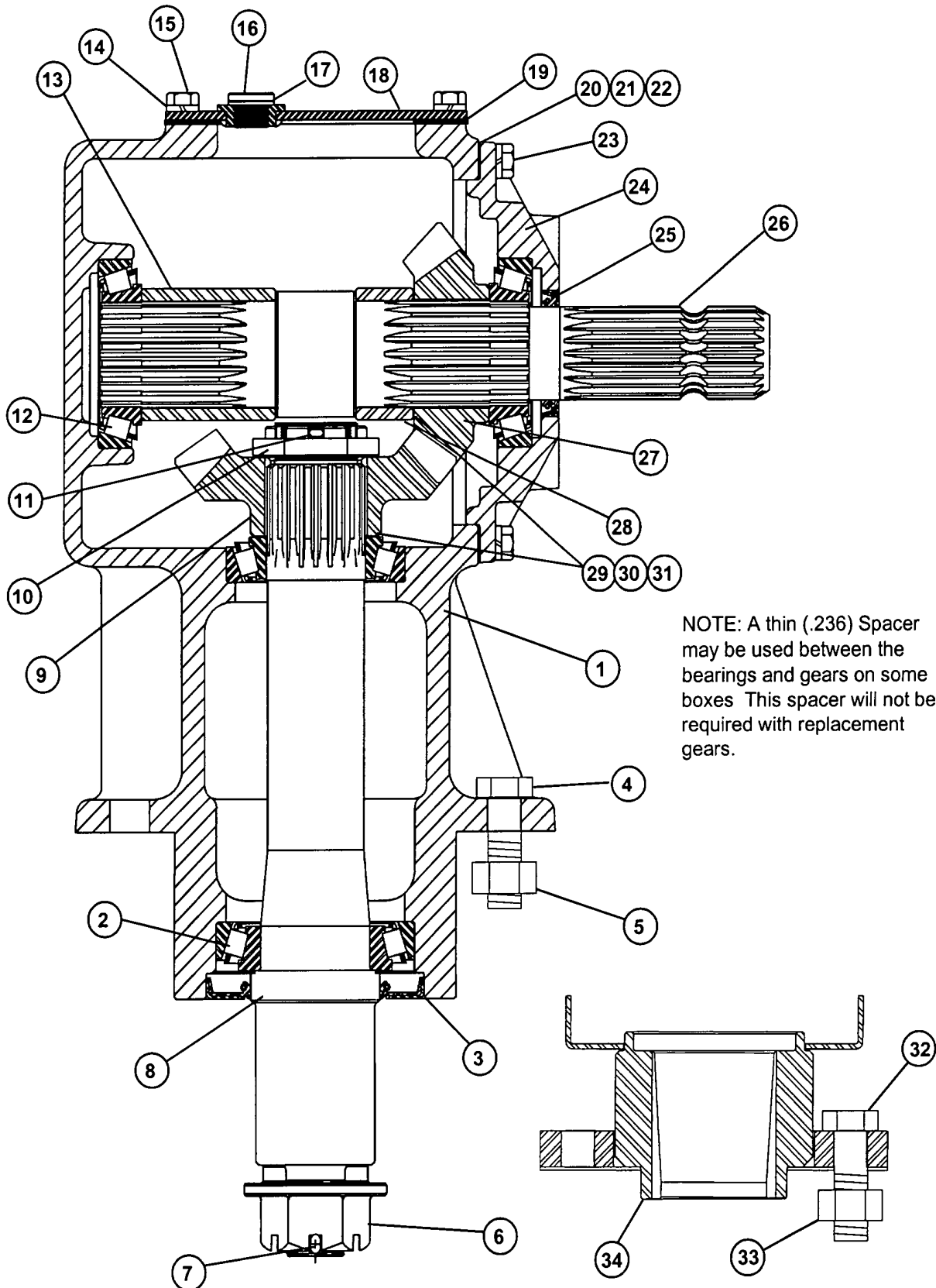


GEARBOX ASSEMBLY (540 RPM) - CY60

ITEM	PART NO.	QTY.	DESCRIPTION
	00769912C	-	ASY,GEARBOX -AG100 - W/GREASE
1	00779330	1	HOUSING
2	00779329	1	BEARING ASSEMBLY #33211
3	00770726	1	OIL SEAL
4	00770727	1	PROTECTOR, SEAL
5	00771227	1	HUB W/2-7/8 SHOULDER
6	00771226	1	NUT,M30-P2.00 FLANGED SLOTTED
7	01422502	1	PIN-COTTER 3/16 X 2-1/2
8	00770728	1	SUPER-AG-100 VERTICAL OUTPUT
9	00758693	1	GEAR,13 TOOTH IEG 03-008
10	00762121	1	NUT,HEX THIN SLOTTED
11	00770421	1	PIN, COTTER 3.6MM x 65MM
12	00769938	3	BEARING #30210
13	00770731	1	SUPER-AG-100 INPUT SHAFT SPCR
14	00755954	12	LOCKWASHER M10
15	00754338	4	HEXB METRIC 10-P1.5 - 20MM
16	00762123	2	PLUG,LEVEL M18 X 1.5
17	00769321	3	WASHER,SEALING,17.8M
18	00758657	1	SPACER,INPUT SHAFT
19	00770732	1	INSPECTION COVER
20	00770733	1	INSPECTION COVER GASKET
21	00758646	VAR	SHIM, ADJUSTMENT - .004"
22	00758647	VAR	SHIM, ADJUSTMENT - .010"
23	00758648	VAR	SHIM ,ADJUSTMENT - .020"
24	00765905	8	HEXB METRIC 10-P1.5 - 30MM
25	00770734	1	INPUT CAP
26	00758653	1	SEAL 1-3/4IDX2.378OD
27	00770735	1	SUPER-AG-100 INPUT SHAFT
28	00758694	1	GEAR,19 TOOTH IEG 03-009
29	00758667	VAR	SHIM .012 2.44 O.D.
30	00762153	VAR	SHIM .016
31	00758668	VAR	SHIM,0.020 2.44 O.D.
32	00762114	1	PLUG,VENT W/WASHER 18M-P1.5
35	00774064	2	GEAR SPACER

CY60/72 (Aug-05) S/N CY60 21480 - CY72 22584 - Current Rev 05-07

GEARBOX ASSEMBLY (1000 RPM) - CY60 Rev 07-04



CY60/72 (Aug-05) S/N CY60 21480 - CY72 22584 - Current Rev 05-07

©2007 Alamo Group Inc.

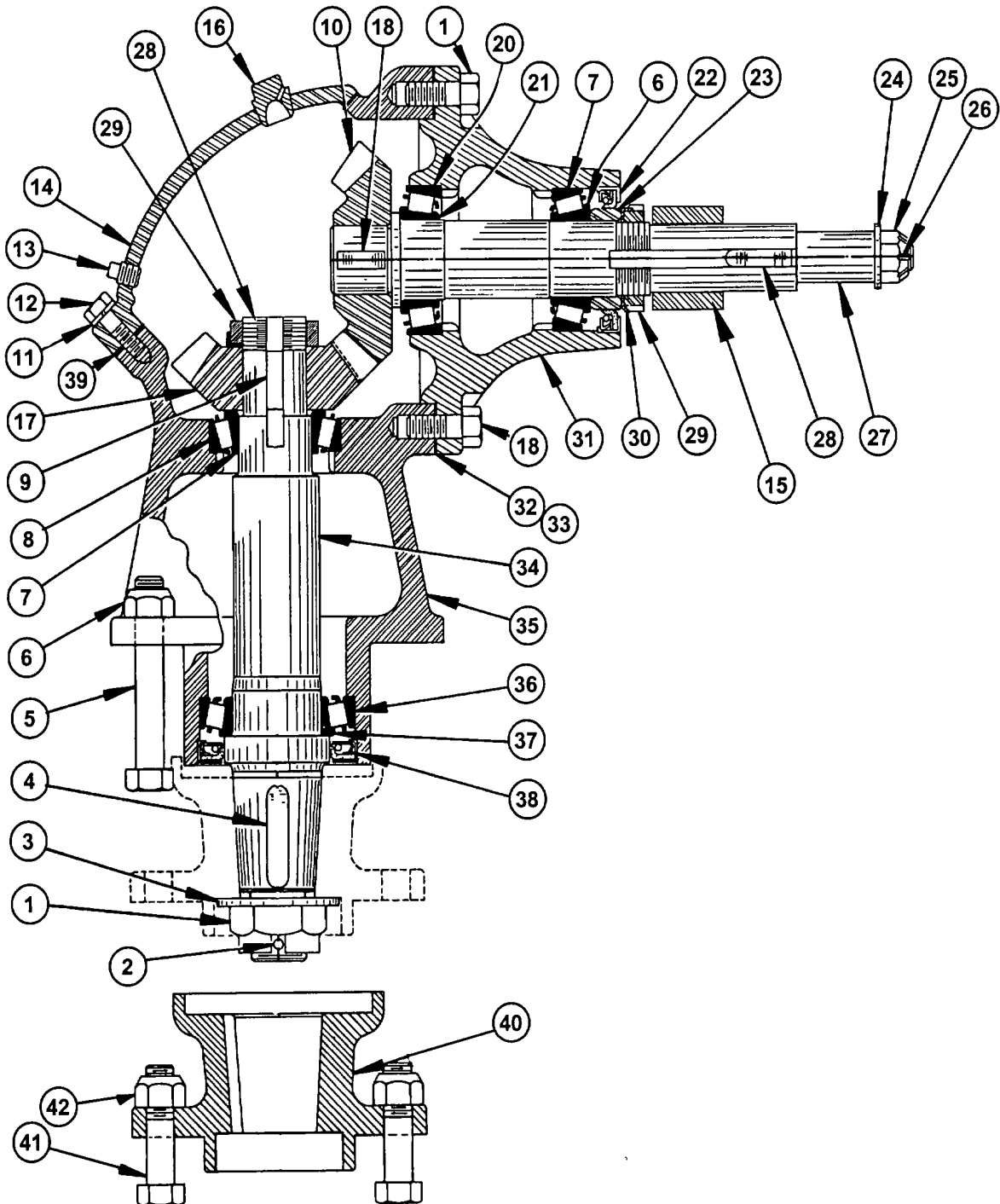
Parts Section - 16

GEARBOX ASSEMBLY (1000 RPM) - CY60 Rev 07-04

ITEM	PART NO.	QTY.	DESCRIPTION
	00769924	1	GEARBOX ASSEMBLY
1	00770724	1	HOUSING
2	00770725	2	BEARING ASSEMBLY
3	00770726	1	OIL SEAL
4	00749127	6	BOLT
5	00749136	6	LOCKNUT
6	00780572	1	FLANGE NUT
7	01422502	1	COTTER PIN
8	00770728	1	VERTICAL OUTPUT SHAFT
9	00770739	1	17 TOOTH GEAR
10	00762121	1	BEARING ADJUSTING NUT
11	00606000	1	COTTER PIN
12	00755628	3	BEARING ASSEMBLY
13	00770731	1	INPUT SHAFT SPACER
14	00766083	12	LOCKWASHER
15	00754338	4	BOLT
16	00762517	2	LEVEL PLUG
17	00769321	3	SEALING WASHER
18	00770732	1	INSPECTION COVER
19	00770733	1	INSPECTION COVER GASKET
20	00758646	Var.	GASKET (0.10)
21	00758647	Var.	GASKET (0.25)
22	00758648	Var.	GASKET (0.50)
23	00765905	8	BOLT
24	00770734	1	INPUT CAP
25	00758653	1	OIL SEAL
26	00770735	1	INPUT SHAFT
27	00770738	1	14 TOOTH GEAR
28	00758657	1	INPUT SHAFT SPACER
29	00758667	Var.	SHIM (0.30)
30		Var.	SHIM (0.40)
31	00758668	Var.	SHIM (0.50)
32	00752681	4	BOLT (NOT SUPPLIED W/ GEARBOX)
33	00749136	4	NUT (NOT SUPPLIED W/ GEARBOX)
34	00772016	1	HUB (NOT SUPPLIED W/ GEARBOX)

GEARBOX ASSEMBLY - CY72 - S/N 22349 AND BELOW

S/N# 22349 and Below

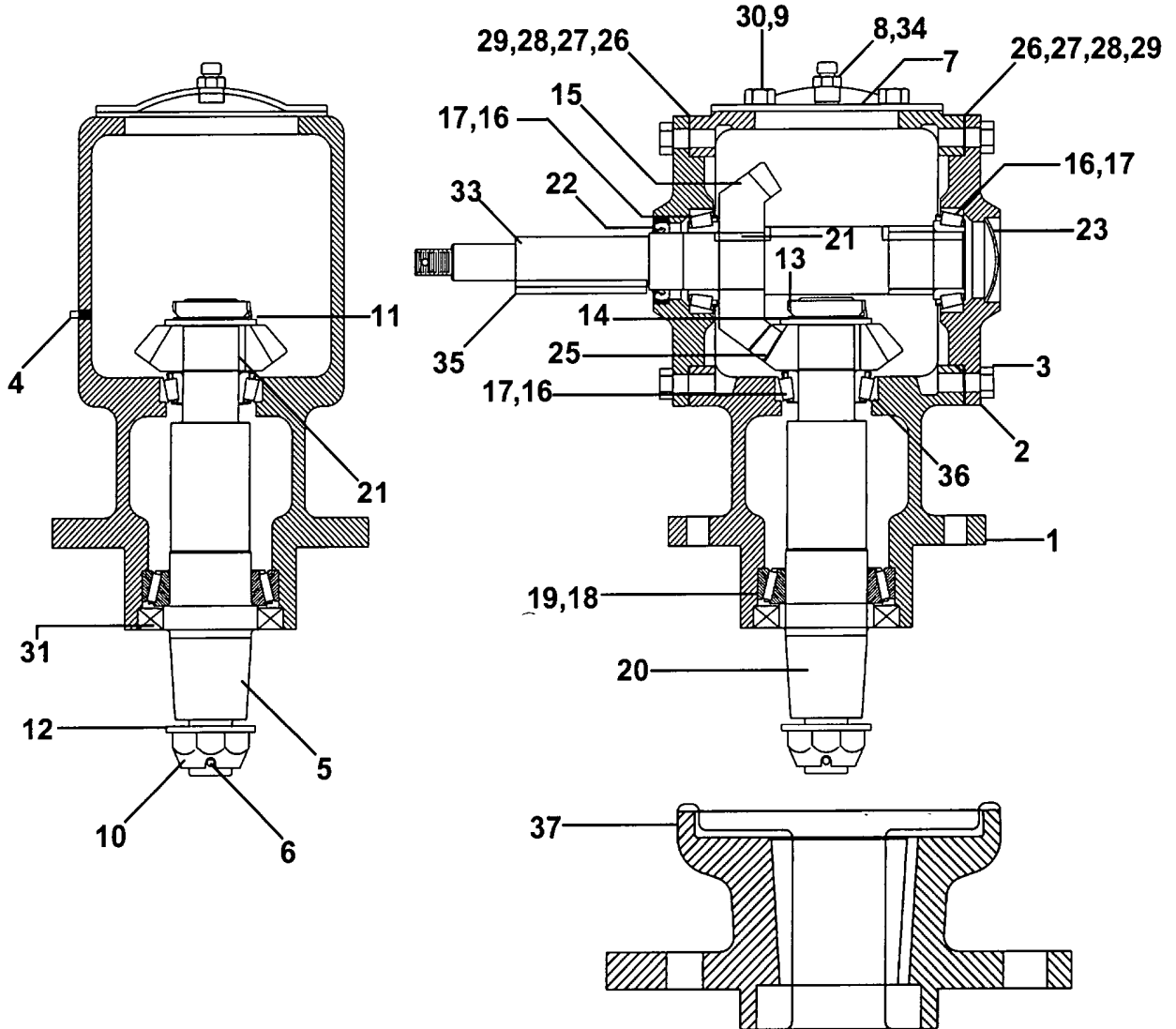


GEARBOX ASSEMBLY - CY72 - S/N 22349 AND BELOW

ITEM	PART NO.	540 RPM QTY	1000 RPM QTY	DESCRIPTION
	0580540000	-	-	GEARBOX ASSEMBLY 540 RPM
	0581000000	-	-	GEARBOX ASSEMBLY 1000 RPM
1	5D20120	1	1	SLOTTED HEX NUT
2	163016	1	1	COTTER PIN
3	15C2000	1	1	PLAIN WASHER
4	581037	1	1	SQUARE KEY
5	00749127	4	4	BOLT, GR5
6	00749136	4	4	LOCKNUT
7	W83	2	2	BEARING CONE
8	W84	2	2	BEARING CUP
9	571036	1	1	SQ. KEY (HEAT TREATED)
10	651043G	1	1	BEVEL GEAR, 22 TEETH
11	00012101	6	6	LOCKWASHER
12	00753642	6	6	BOLT
13	3711350	1	1	NPT PIPE PLUG (OIL LEVEL TEST)
14	0581000004	1	1	GEARBOX COVER
15	641041	1	1	SLEEVE, 2-11/32 IG.
16	301021	1	1	PIPE PLUG (OIL FILLER)
17	651043P	1	1	BEVEL GEAR, 16-TEETH
18	PT209	1	1	WOODRUFF KEY, "E"
19	7A181310	6	6	PLACE BOLT
20	PT102	1	1	BEARING CUP
21	PT101	1	1	BEARING CONE
22	PT103	1	1	OIL SEAL
23	271096	1	1	BEARING COLLAR
24	5312316	1	1	WASHER, HARDENED
25	5312315	1	1	YOKE NUT
26	16212012	1	1	COTTER PIN
27	0581000003	1	1	INPUT DRIVE SHAFT
28	271099	1	1	SQ. KEY
	581066	1	1	SQ. KEY (USED WITH SLIP CLUTCH)
29	PT104	2	2	LOCKNUT
30	PT105	2	2	LOCKWASHER
31	571032	1	1	DRIVESHAFT HOUSING
32	571037	1	1	SHIM SET
33	571038	1	1	1/64" GASKET
34	651045	1	1	BLADE SHAFT
35	0581000002	1	1	GEARBOX HOUSING
36	581039	1	1	BEARING CUP
37	581038	1	1	BEARING CONE
38	5810310	1	1	OIL SEAL
39	561055	1	1	1/32" GASKET
40	581036	1	1	BLADE HUB, ONLY
41	00749127	4	4	BOLT, GR 5
42	00749136	4	4	LOCKNUT

GEARBOX ASSEMBLY - CY72 - S/N 22350 AND ABOVE Rev 03-05

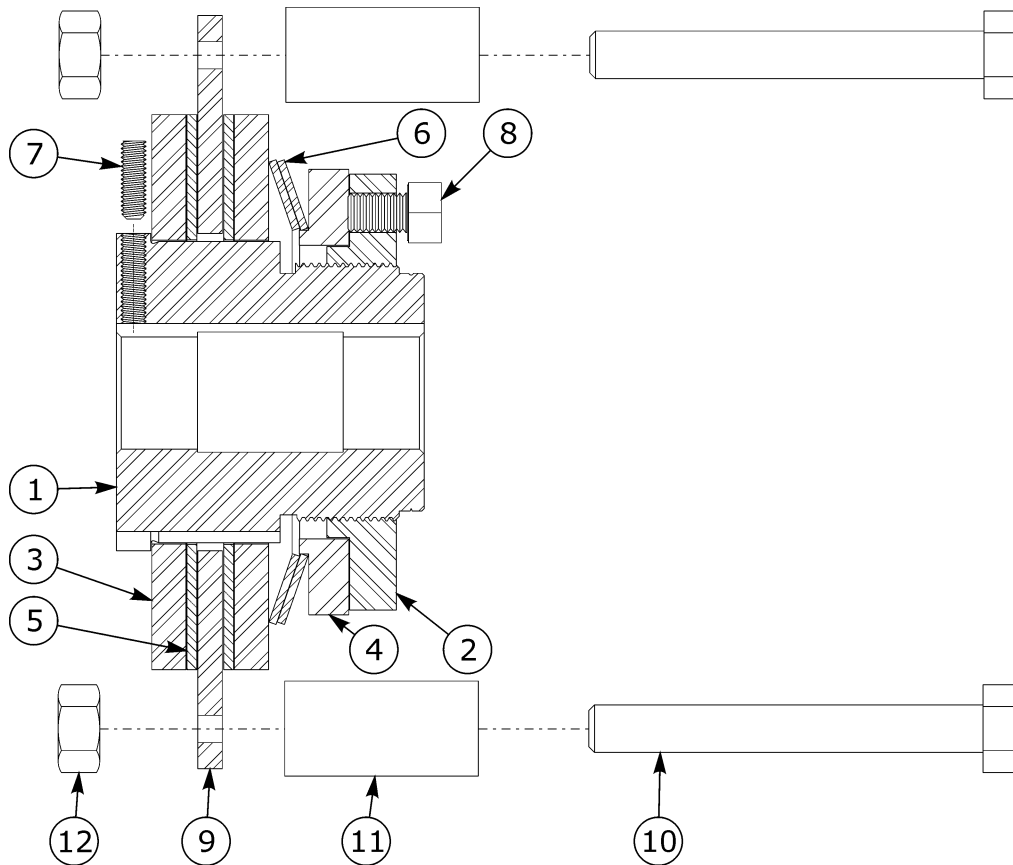
S/N# 22350 and Above



GEARBOX ASSEMBLY - CY72 - S/N 22350 AND ABOVE Rev 03-05

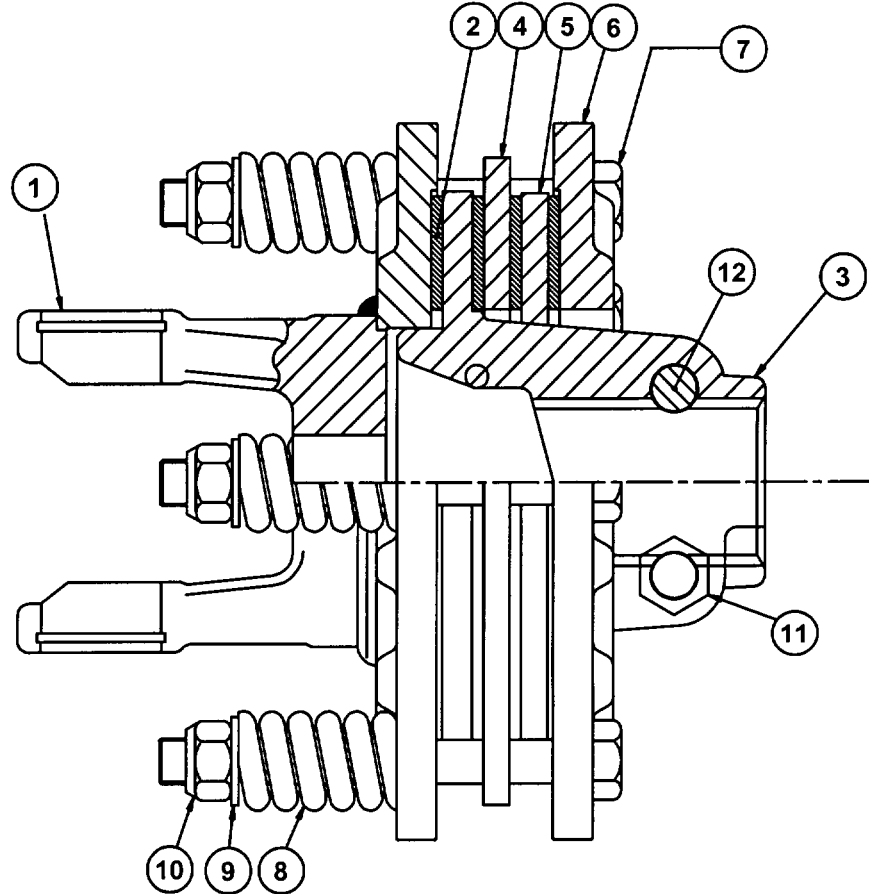
ITEM	PART NO.	QTY	QTY	DESCRIPTION
	00774158	-	-	G/B FL15 GEAR IN FRONT 540
	00774901	-	-	G/B FL15 GEAR IN FRONT 1000
1	00774156	1	1	HOUSING FLEX G/B W/GYRO LOWER
2	651042	2	2	CAP,BEARING
3	7A181310	12	12	PLACE BOLT 1/2NC 1-1/4 PLAIN
4	00751003	1	1	PIPE PLUG 1/4 NPTM STANDARD
5	581037	1	1	KEY,ROUND END
6	00606000	1	1	PIN-COTTER 3/16 X 2
7	W26A	1	1	COVER GEAR BOX
8	02959018	1	1	GREASE RELIEF FITTING 1-5LBS
9	00750959	4	4	HEXB,1/2NC X 1,ZP,GRD5
10	5D20120	1	1	NUT HEX SLOTTED 1-1/4-12NF PL
11	0815040013	1	1	WASHER,TKM TONGUED K91508
12	15C2000	1	1	WASHER 1 1/4 HARDEND
13	PT104	1	1	LOCKNUT
14	PT105	1	1	WASHER, LOCK
15	00757026	1	1	GEAR
16	W83	3	3	BEARING CONE TIMKEN #24780
17	W84	3	3	BEARING CUP TIMKEN #24720
18	371135	1	1	BEARING CONE TIMKEN #28985
19	371136	1	1	BEARING CUP TIMKEN #28920
20	00774157	1	1	SHAFT BLADE FL15
21	571036	2	2	KEY HEAT TREATED
22	5310415	1	1	SEAL OIL
23	531053	1	1	PLUG SEAL
24	651046	1	1	SLEEVE
25	00757027	1	1	GEAR
26	57103720	4	4	SHIM .020
27	57103707	6	6	SHIM 007
28	57103705	6	6	SHIM .005
29	571038	2	2	GASKET
30	00001300	4	4	LOCKWASHER 1/2 PL STD
31	371137	1	1	OIL SEAL
32	3711350	1	1	PLUG-PLASTIC SHIPPING
33	651044A	1	1	SHAFT, INPUT W/ 3/8 KEYWAYS
34	00764494	1	1	ADAPTER, PIPE, REDUCER
35	0581060006	1	1	KEY
36	00768725	1	1	SHIM, .010
37	00774159	1	1	HUB BLADE GR84/FL20
38	5312316	1	1	WASHER (SPECIAL)
40	5312315	1	1	NUT YOKE 3/4-16 THIN CASTLE
39	00026200	1	1	PIN-COTTER 5/32 X 1-1/2

SLIP CLUTCH - CY72 Rev 11-06



ITEM	PART NO.	QTY.	DESCRIPTION
	53130M	1	SLIPCLUTCH
1	00759345M	1	HUB
2	00759346	1	NUT
3	00764025	2	PRESSURE PLATE
4	00764026	1	GUIDE RING
5	0581060003	2	FRICION DISK
6	0581060004	2	SPRING
7	9C15188	1	SCREW
8	0581060008	3	BOLT
9	581063A	1	DRIVE PLATE
10	63092200	4	BOLT (LIFT TYPE)
11	0581060031	2	SPACER
12	007590940	4	LOCKNUT

SLIP CLUTCH ASSEMBLY - CY60 Rev 03-05

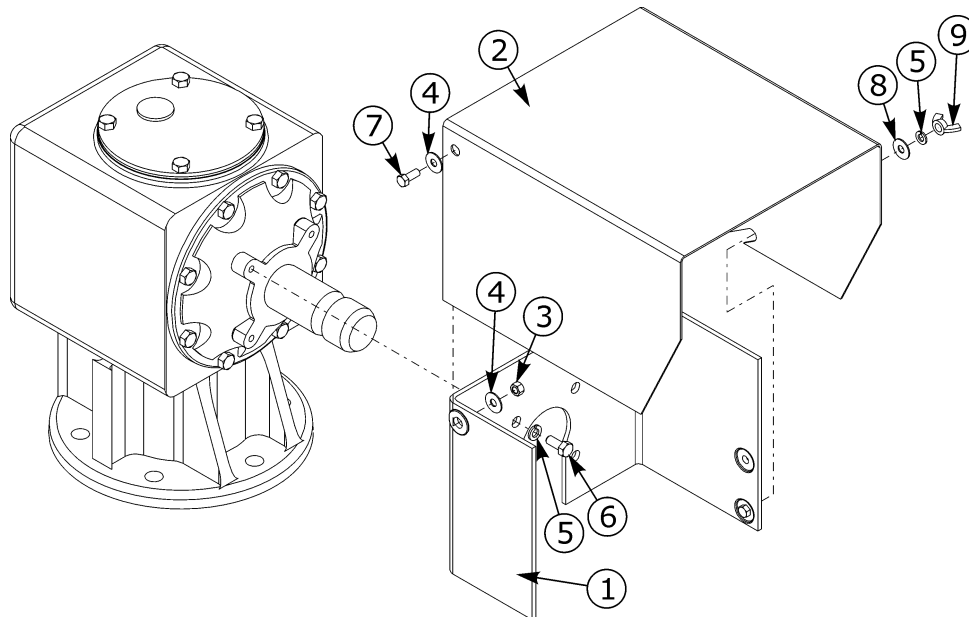


USED ON
INTERMEDIATE
DRIVELINE
P/N 00775385
P/N 00775390

ITEM	PART NO.	QTY.	DESCRIPTION
	00775331	-	SLIP CLUTCH
1	00775333	1	FLANGE YOKE
2	8366	4	FRICITION DISK
3	00775334	1	HUB
4	00775335	1	DRIVE PLATE
5	00775336	1	DRIVE PLATE
6	00775337	1	THRUST PLATE
7	00775338	6	BOLT
8	00775339	6	COMPRESSION SPRING
9	00754566	6	LOCKWASHER
10	00756164	6	LOCKNUT
11	00775327	2	LOCKNUT
12	00775328	2	BOLT

CY60/72 (Aug-05) S/N CY60 21480 - CY72 22584 - Current Rev 05-07

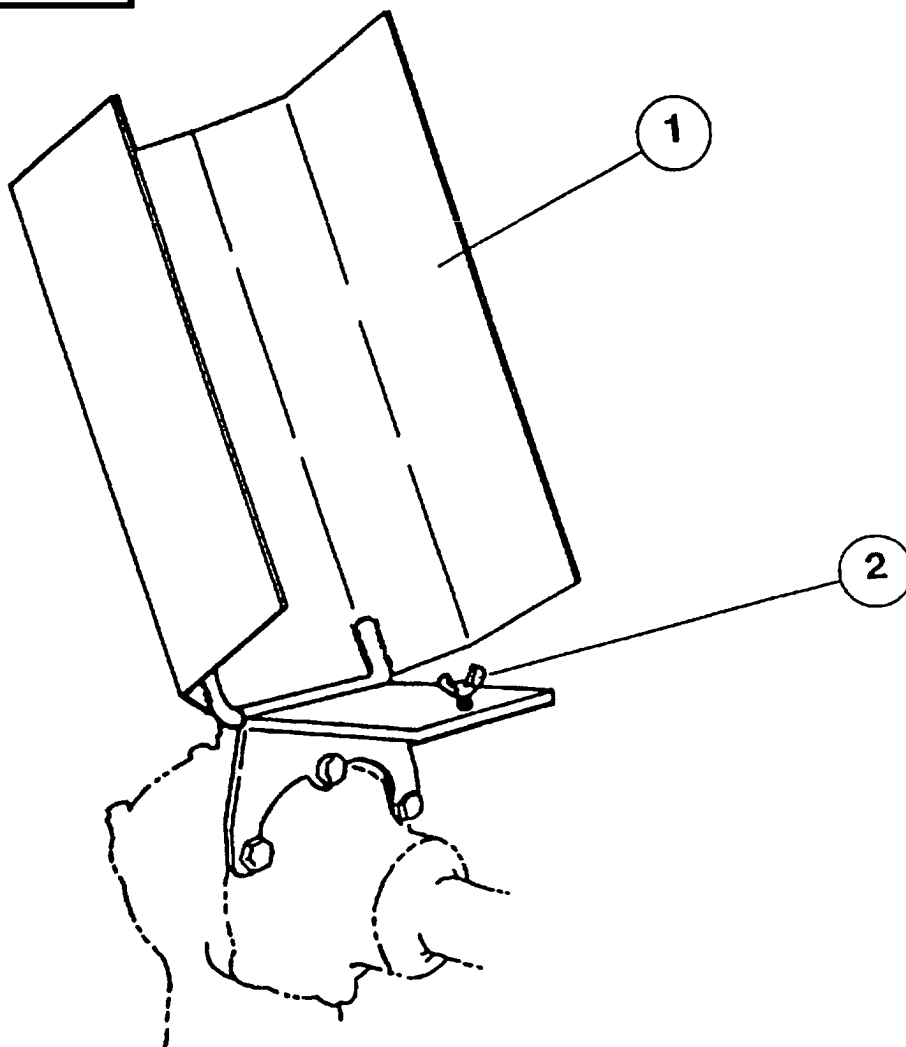
SHIELD ASSEMBLY - GEARBOX CY60 Rev 11-06



ITEM	PART NO.	QTY.	DESCRIPTION
1	00757742	1	SAFETY SHIELD BRACKET
2	00757573	1	SAFETY SHIELD
3	00015800	2	NUT
4	00011100	4	WASHER
5	00011700	4	LOCKWASHER
6	00751693	4	BOLT
7	00753642	2	BOLT
8	00024100	2	FLATWASHER
9	00004000	2	WINGNUT

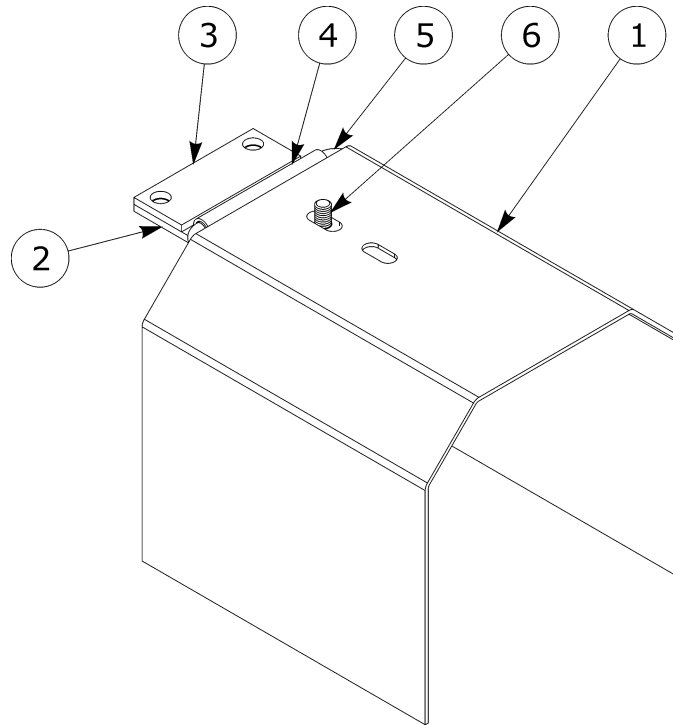
SHIELD ASSEMBLY - GEARBOX CY72 - S/N 22349 AND BELOW

S/N# 22349 and Below



ITEM	PART NO.	QTY.	DESCRIPTION
1	0581070000	1	COMPLETE SHIELD ASSEMBLY
2	5F5180	1	WING NUT

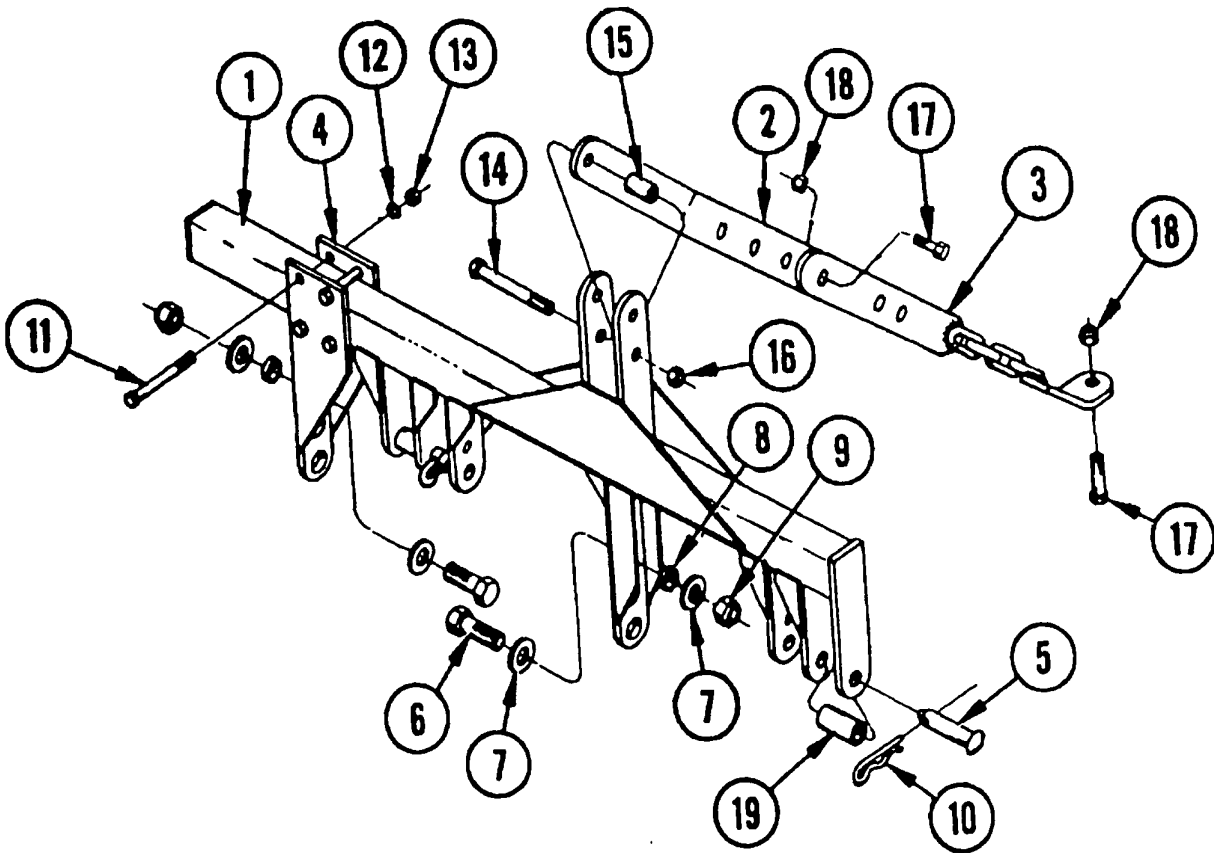
SHIELD ASSEMBLY - GEARBOX CY72 - S/N 22350 AND ABOVE Rev 11-06



ITEM	PART NO.	QTY.	DESCRIPTION
	0651450300	-	SHIELD ASSEMBLY
1	0651450301	1	SHIELD GEARBOX
2	0861080102	1	SHIELD SUPPORT
3	00766355	1	FLAT SHIELD SUPPORT
4	0758410102	1	HINGE PIPE
5	0758410103	2	HINGE ROUND
6	00750959	1	CAPSCREW

OFFSET ADAPTER (3-POINT) - CY 60 & 72

NOTE:EXTRA EQUIPMENT

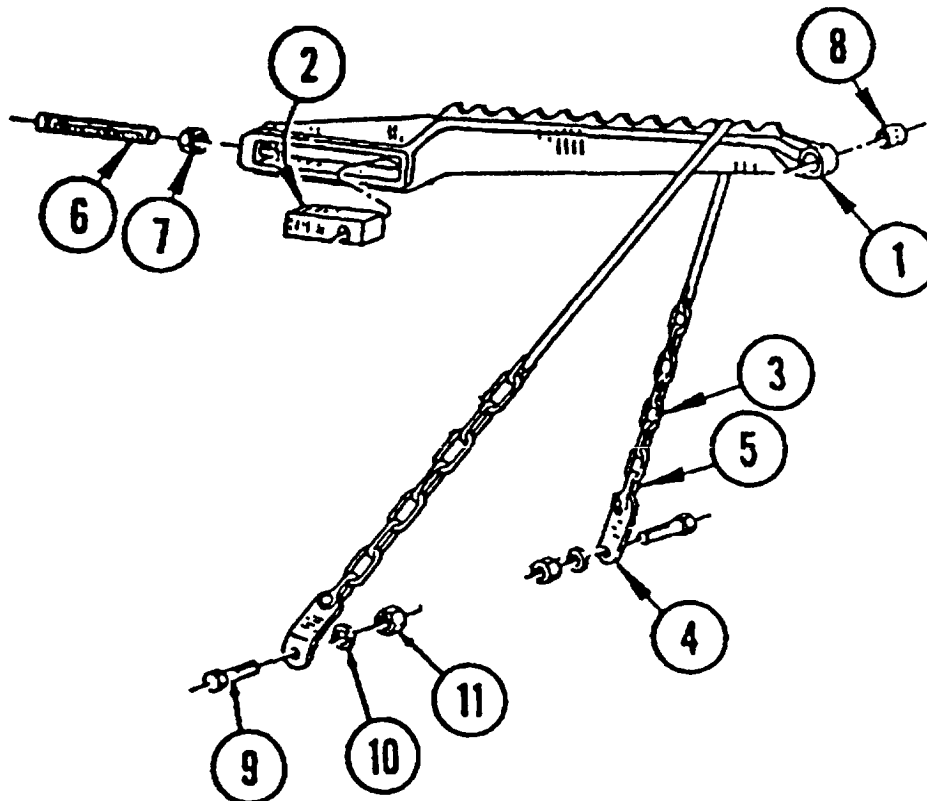


ITEM	PART NO.	QTY.	DESCRIPTION
	0702310000	1	OFFSET ADAPTER COMPLETE
1	0702310100	1	ADAPTER MAINFRAME WELDMENT
2	0702310001	1	BRACE BAR
3	0702310300	1	BRACE LUG & CHAIN WELDMENT
4	0702310200	1	ADJUSTABLE LIFT LUG WELDMENT
5	511027	2	WRIST PIN
6	7A14924	2	BOLT
7	15B1400	4	PLAIN WASHER
8	423013	4	BUSHING
9	5GR1490	2	LOCKNUT
10	3W6	2	RETAINING PIN
11	7A81336	4	BOLT
12	13800	4	LOCK WASHER
13	5B8130	4	HEX NUT
14	7AH5121636	1	BOLT
15	595062	1	SPACER
16	5JRC12160	1	DEFORMED THD. TOP LOCK NUT
17	7AH5101816	2	BOLT GR5
18	5GR10180	2	LOCKNUT
19	743013	2	BUSHING

CY60/72 (Aug-05) S/N CY60 21480 - CY72 22584 - Current Rev 05-07

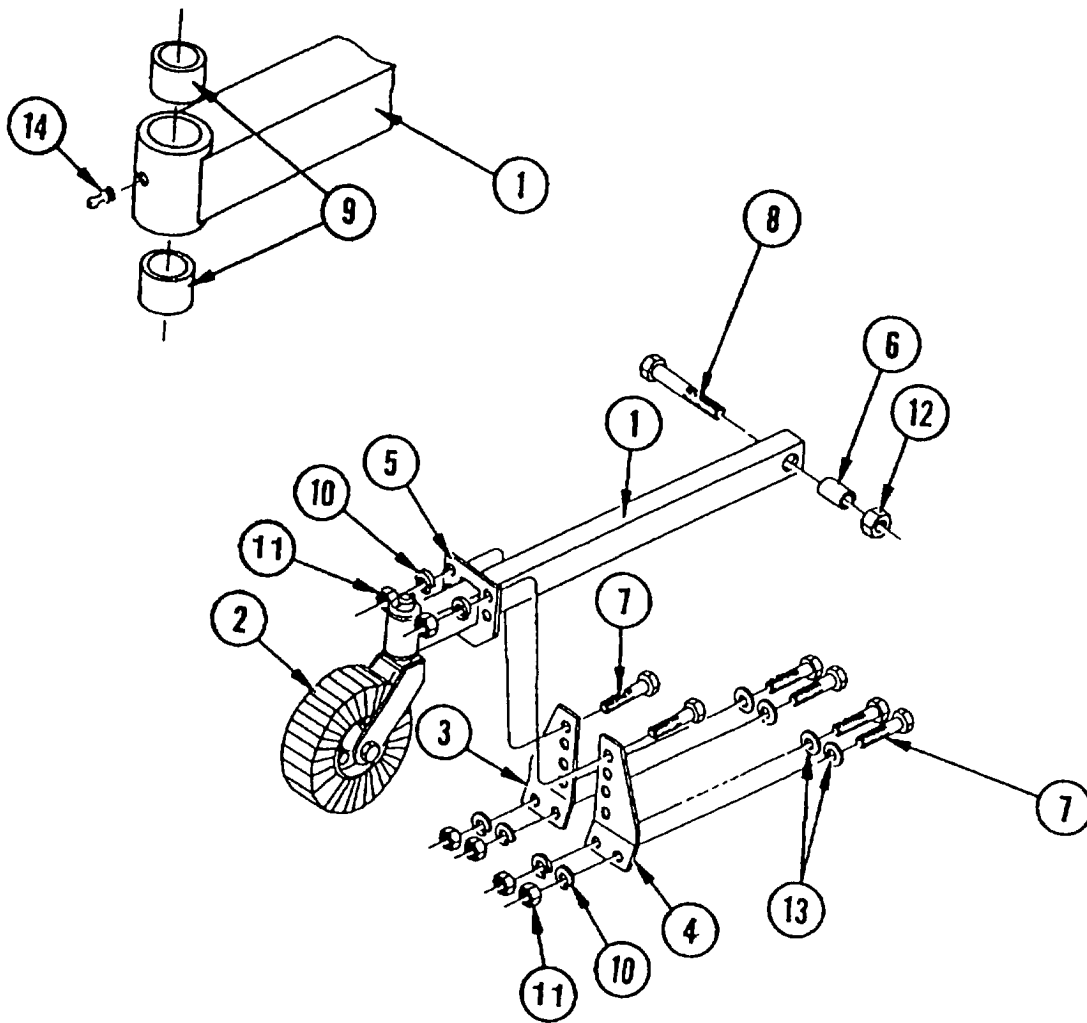
RELIEF ASSEMBLY - HYDRAULIC

NOTE: EXTRA EQUIPMENT



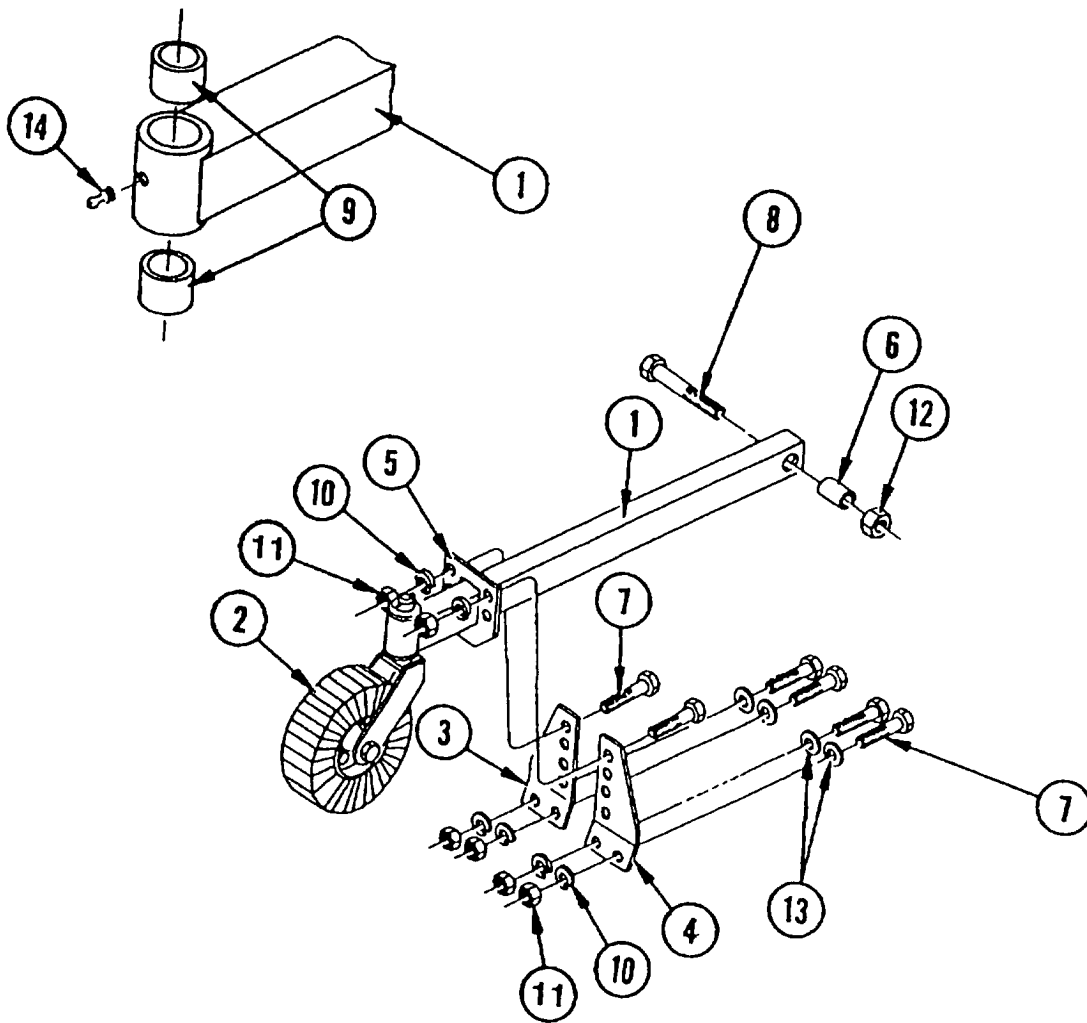
ITEM	PART NO.	QTY.	DESCRIPTION
	58504	-	HYDRAULIC RELIEF ASSEMBLY
1	625041	1	TOP LINK
2	625042	1	ADJUSTING BLOCK, REVERSIBLE
3	483061	1	HYDRAULIC RELIEF CHAIN WELDMENT
4	423016B2	2	HYDRAULIC RELIEF CHAIN CLIP
5	21600	2	ROUND PIN CHAIN SHACKLE
6	9A1121048	1	SQ. HD. CUP POINT SETSCREW
7	02023900	1	JAMNUT
8	625043	1	BUSHING
9	7A101116	2	BOLT
10	00010300	2	LOCKWASHER
11	00010400	2	LOCKNUT

TAILWHEEL MOUNTING ASSY S/N CY60 21480 - CY72 22584 -Current Pub 08-05



ITEM	PART NO.	CY60	CY72	DESCRIPTION
1	00775626	-	1	TAILWHEEL BEAM(W/BUSHINGS)
	00775627	1	-	TAILWHEEL BEAM(W/BUSHINGS)
2	00776220	1	1	CASTER FORK & WHEEL ASSEMBLY
3	0585020002	1	1	LEFT SIDE SUPPORT BRACKET
4	0585020001	1	1	RIGHT SIDE SUPPORT BRACKET
5	0585020300	1	1	POSITIONING BRACKET
6	0585021101	1	1	SPACER
7	7A81312	6	6	BOLT
8	7A101140	1	1	BOLT
9	361129	2	2	SINTERED IRON BUSHING, 1-1/2 ID
10	00001300	6	6	LOCK WASHER
11	5B8130	6	6	NUT
12	5GR10110	1	1	LOCKNUT
13	15B800	4	4	PLAIN WASHER
14	651062F	1	1	GREASE FITTING

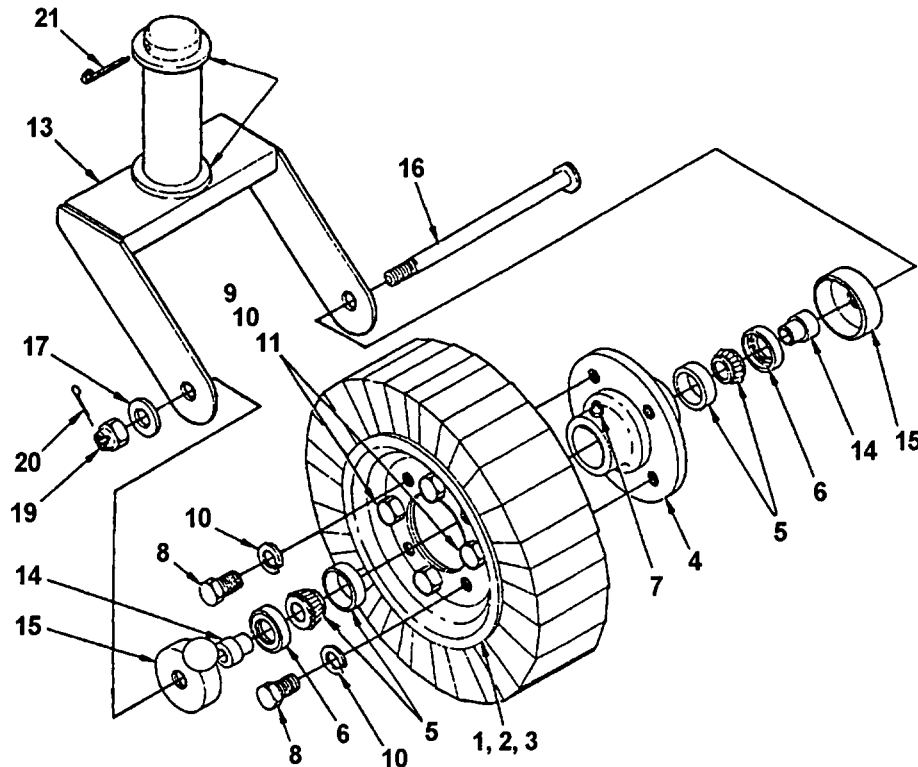
TAILWHEEL MOUNTING ASSY S/N CY60 21479 - CY72 22583 -Below Pub 08-05



ITEM	PART NO.	CY60	CY72	DESCRIPTION
1	00775626	-	1	TAILWHEEL BEAM(W/BUSHINGS)
	00775627	1	-	TAILWHEEL BEAM(W/BUSHINGS)
2	0585020200	1	1	TAILWHEEL ASSEMBLY
3	0585020002	1	1	LEFT SIDE SUPPORT BRACKET
4	0585020001	1	1	RIGHT SIDE SUPPORT BRACKET
5	0585020300	1	1	POSITIONING BRACKET
6	0585021101	1	1	SPACER
7	7A81312	6	6	BOLT
8	7A101140	1	1	BOLT
9	361129	2	2	SINTERED IRON BUSHING, 1-1/2 ID
10	00001300	6	6	LOCK WASHER
11	5B8130	6	6	NUT
12	5GR10110	1	1	LOCKNUT
13	15B800	4	4	PLAIN WASHER
14	651062F	1	1	GREASE FITTING

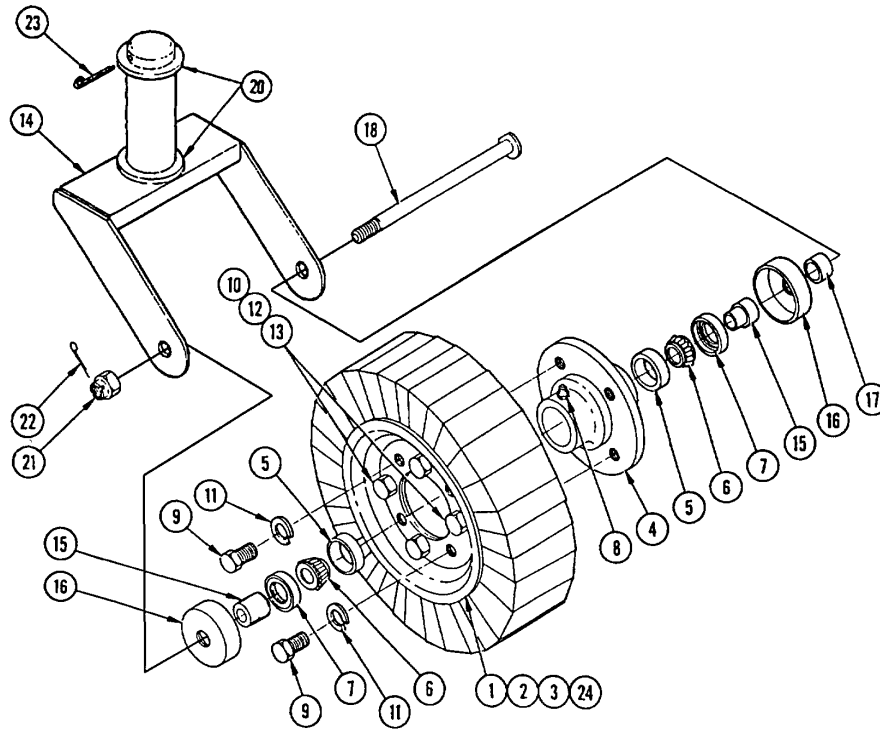
CY60/72 (Aug-05) S/N CY60 21480 - CY72 22584 - Current Rev 05-07

TAILWHEEL ASSY S/N CY60 21480 - CY72 22584 -Current Pub 08-05



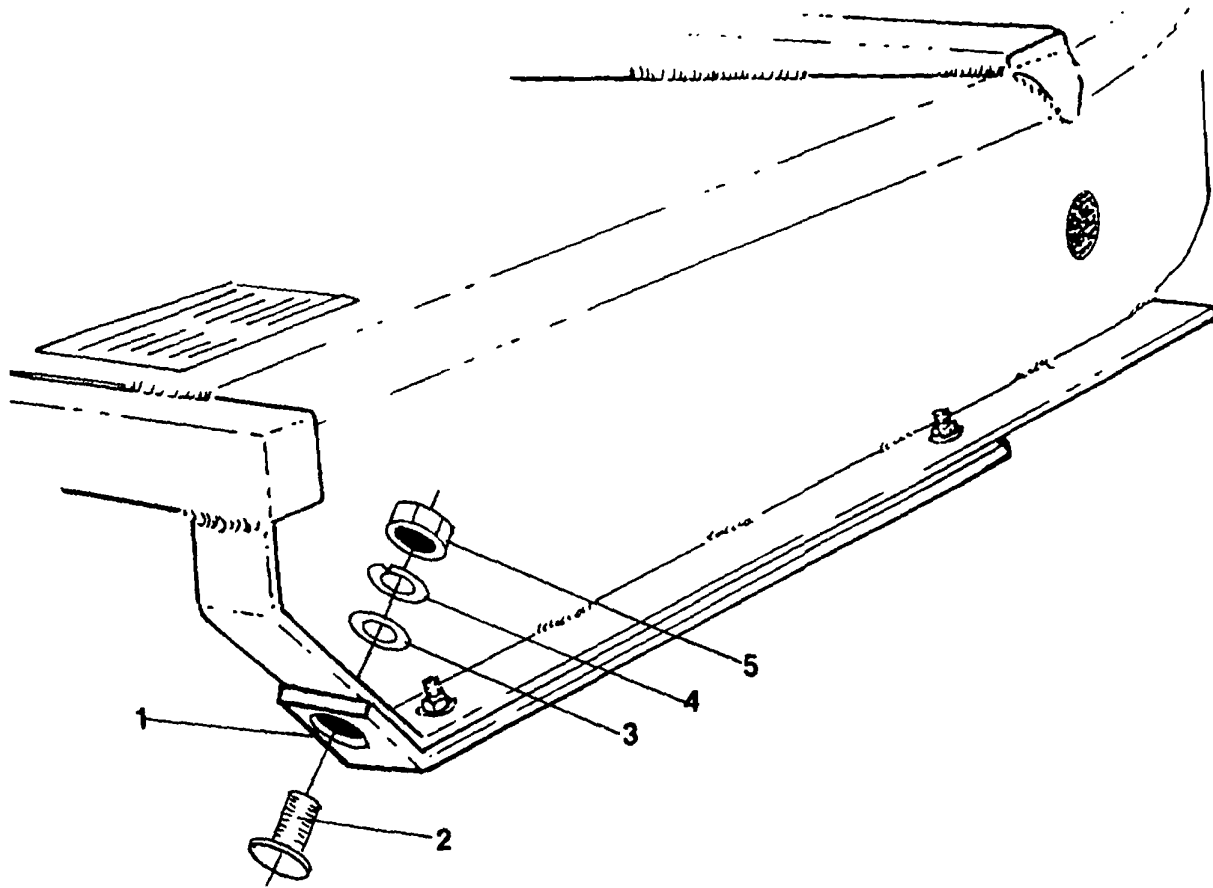
ITEM	PART NO.	QTY.	DESCRIPTION
	00776220	1	CASTER WHEEL AND HUB ASSEMBLY
1	373024H	1	TIRE WHEEL ASSEMBLY
2	373024A	1	TIRE
3	373024B	1	8" DIA. WHEEL (BOLTED ASSY.)
4	00776214	1	HUB
5	00776213	2	BEARING CONE & CUP
6	00776219	2	OIL SEAL
7	00772082	1	GREASE FITTING (THREADED)
8	00776216	4	BOLT
9	7A6166	4	BOLT
10	00776215	4	FLATWASHER
11	00012101	4	LOCKWASHER
12	00013901	4	NUT
13	0585020210A	1	CASTER FORK WELDMENT
14	00772017	2	BUSHING
15	00772018	2	DUST CAP
16	00776211	1	SPINDLE BOLT
17	02822500	1	WASHER
18	15B2400	2	FLATWASHER
19	00776212	1	CASTELLATED NUT
20	00771620	1	COTTER PIN
21	00758899	1	COTTER PIN

TAILWHEEL ASSY S/N CY60 21479 - CY72 22583 -Below Rev 05-07



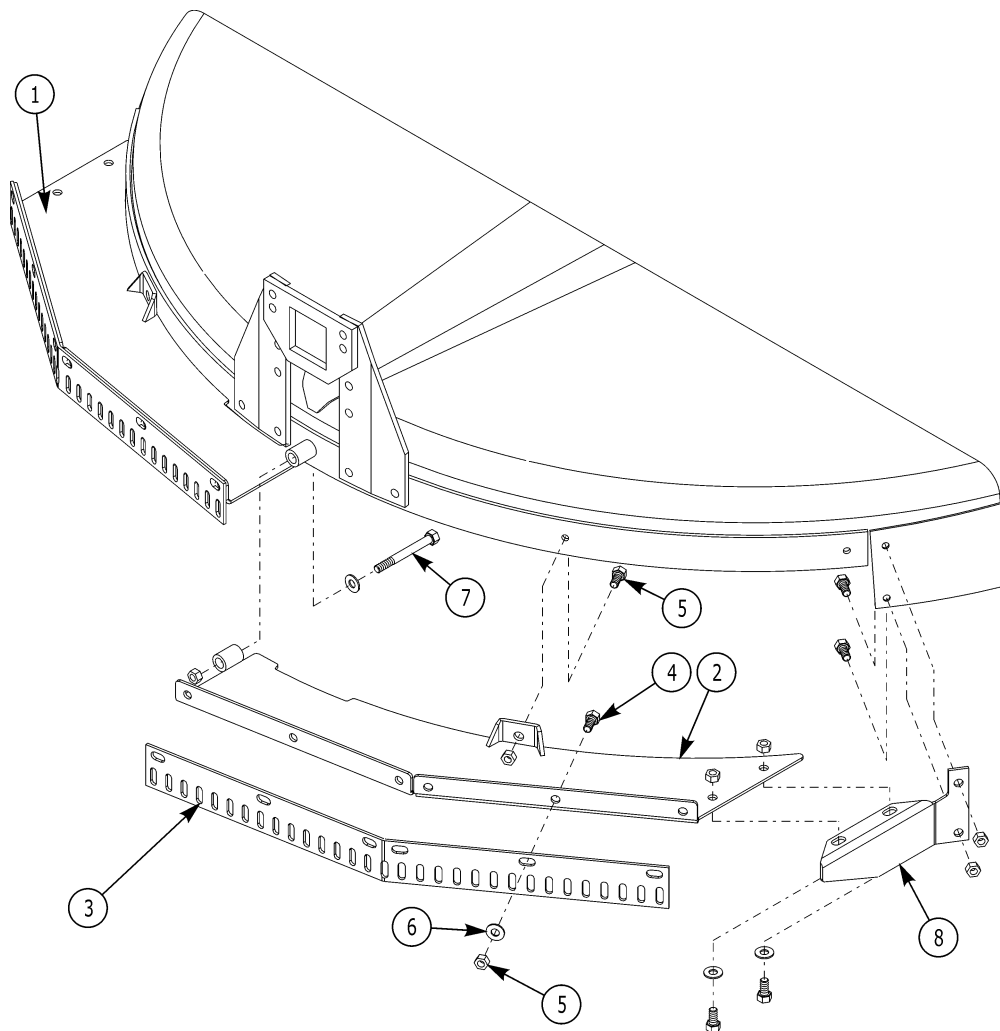
ITEM	PART NO.	QTY.	DESCRIPTION
	0585020200	1	TAILWHEEL COMPLETE ASSEMBLY
1	373024	1	WHEEL ASSY.(1 EA. ITEMS 2,3, & 373024D)
2	373024A	1	TIRE 4.00 X 8PP, 15-3/8" OD
3	373024B	1	WHEEL ONLY, 8" DIA. (BOLTED ASSY.)
4	373024D	1	HUB, (W/BEARINGS, SEALS, GREASE FITTING, BOLTS, L.W.)
5	373024G	2	BEARING CUP
6	373024F	2	BEARING CONE
7	373024E	2	SEAL, GREASE
8	17C1792B	1	GREASE FITTING (THREADED)
	00600000	1	GREASE FITTING (DRIVE IN)
9	7A8208	4	CAPSCREW, HEX HEAD
10	7A6166	4	CAPSCREW, HEX HEAD
11	13800	4	LOCK WASHER
12	13600	4	LOCK WASHER
	5B6160	4	NUT
14	0585020210	1	FORK(WELDMENT)
15	37302C2C	2	SLEEVE, SHOULDER
16	37302D2B	2	CUP, DUST
17	511016	2	BUSHING, SPACER
18	37302D2A	1	BOLT, SPINDLE (SPECIAL)
19	15B1200	1	WASHER, PLAIN SAE
20	15B2400	2	WASHER, PLAIN SAE
21	5E12160	1	NUT, SLOTTED
22	1621/2012	1	PIN, COTTER
23	00758899	1	ROLL PIN
24	373024H	1	TIRE & WHEEL(BOLTED ASSY. ONLY, LESS HULB)

SKID SHOE ASSEMBLY



ITEM	PART NO.	QTY.	DESCRIPTION
1	00774704	2	SKID SHOE
2	2A361612	6	PLOW BOLT
3	00011100	6	FLAT WASHER
4	00012101	6	LOCKWASHER
5	00013901	6	NUT HEX

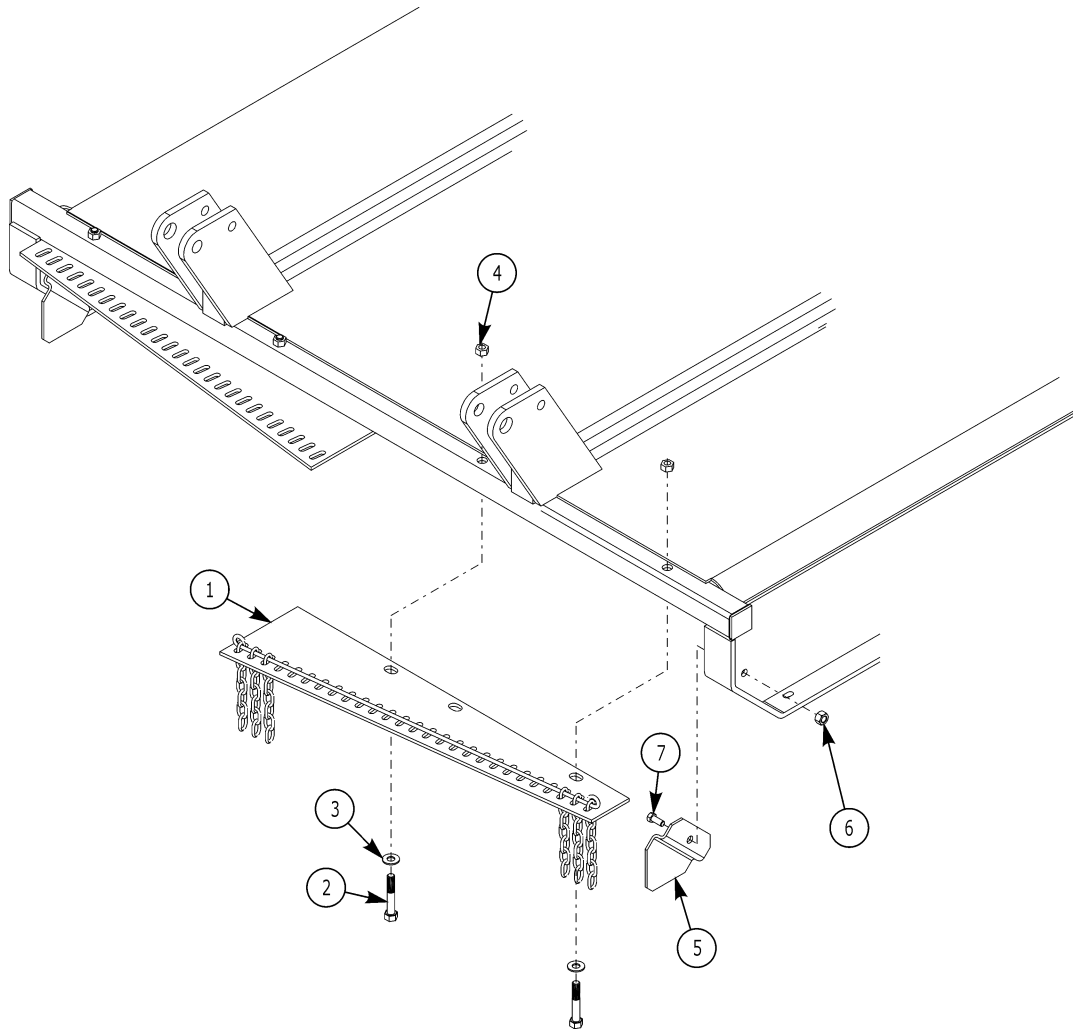
CHAIN GUARD ASSEMBLY - REAR - CY 60 & 72 Rev 11-06



ITEM	PART NO.	CY60	DESCRIPTION
	00775664	1	COMPLETE CY60 CHAIN GUARD ASSY
	00775684	-	COMPLETE CY72 CHAIN GUARD ASSY
1	00775503	-	CHAINGUARD DEFLECTOR - CY72 LEFT
	00773667	1	CHAINGUARD DEFLECTOR - CY60 LEFT
2	00775502	-	CHAINGUARD DEFLECTOR - CY72 RIGHT
	00773663	1	CHAINGUARD DEFLECTOR - CY60 RIGHT
3	00775666	1	REAR CHAINGUARD CY60
	00775676	-	REAR CHAINGUARD CY72
4	02030700	18	HHCS 1/2-13UNC 1-1/4 PL5
5	00001800	19	LOCKNUT
6	00002700	13	FLATWASHER
7	00752680	1	HHCS 1/2-13UNC X 4LG PL5
8	00775655	1	PLATE, RIGHT REAR C/G MOUNT
	00775656	1	PLATE, LEFT REAR C/G MOUNT
	00775675	-	ASY, DOUBLE C/G COMPLETE - CY72
	00775686	1	ASY, DOUBLE C/G COMPLETE - CY60

CY60/72 (Aug-05) S/N CY60 21480 - CY72 22584 - Current Rev 05-07

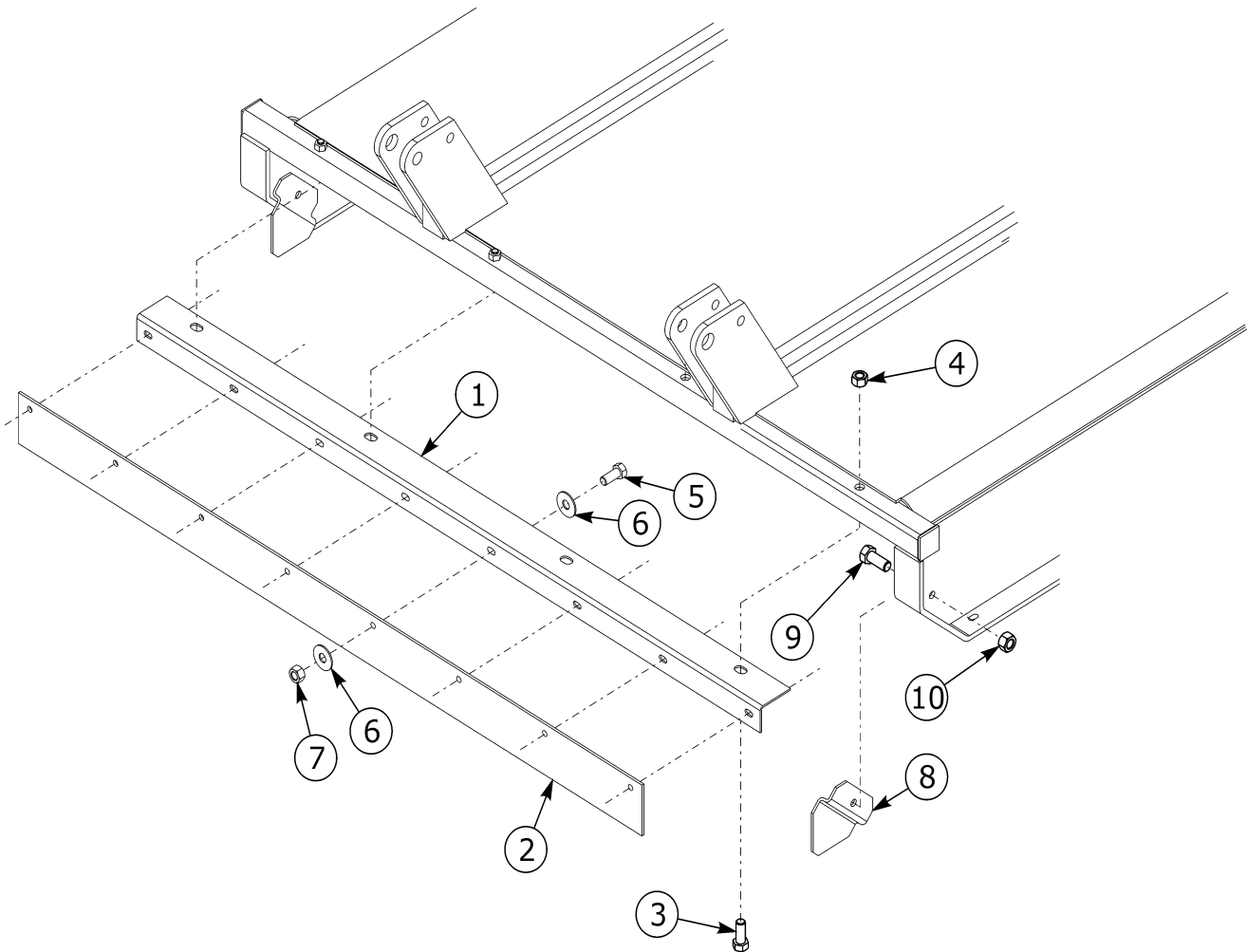
CHAIN GUARD ASSEMBLY - FRONT - CY 60 & 72 Rev 11-06



ITEM	PART NO.	CY60	CY72	DESCRIPTION
1	00775709	1	-	ASSY, FRONT RH C/G
	00775708	1	-	ASSY, FRONT LH C/G
	00775711	-	1	ASSY, FRONT RH C/G
	00775710	-	1	ASSY, FRONT LH C/G
2	7A101128	2	2	BLT 5/8 X 3-1/2 ZP
3	00001400	2	2	FLATWASHER 5/8 PL STD
4	00695100	2	2	NUT, TOPLOCK 5/8 NC PLB
5	00775739	2	2	DEFLECT SIDE FORMED
6	02030700	2	2	HHCS 1/2-13UNC 1-1/4 PL5
7	00001800	2	2	LOCKNUT TLM 1/2 NC PLB
	00775707	1	-	ASSY, DOUBLE C/G COMPLETE - CY60
	00775699	-	1	ASSY, DOUBLE C/G COMPLETE - CY72

CY60/72 (Aug-05) S/N CY60 21480 - CY72 22584 - Current Rev 05-07

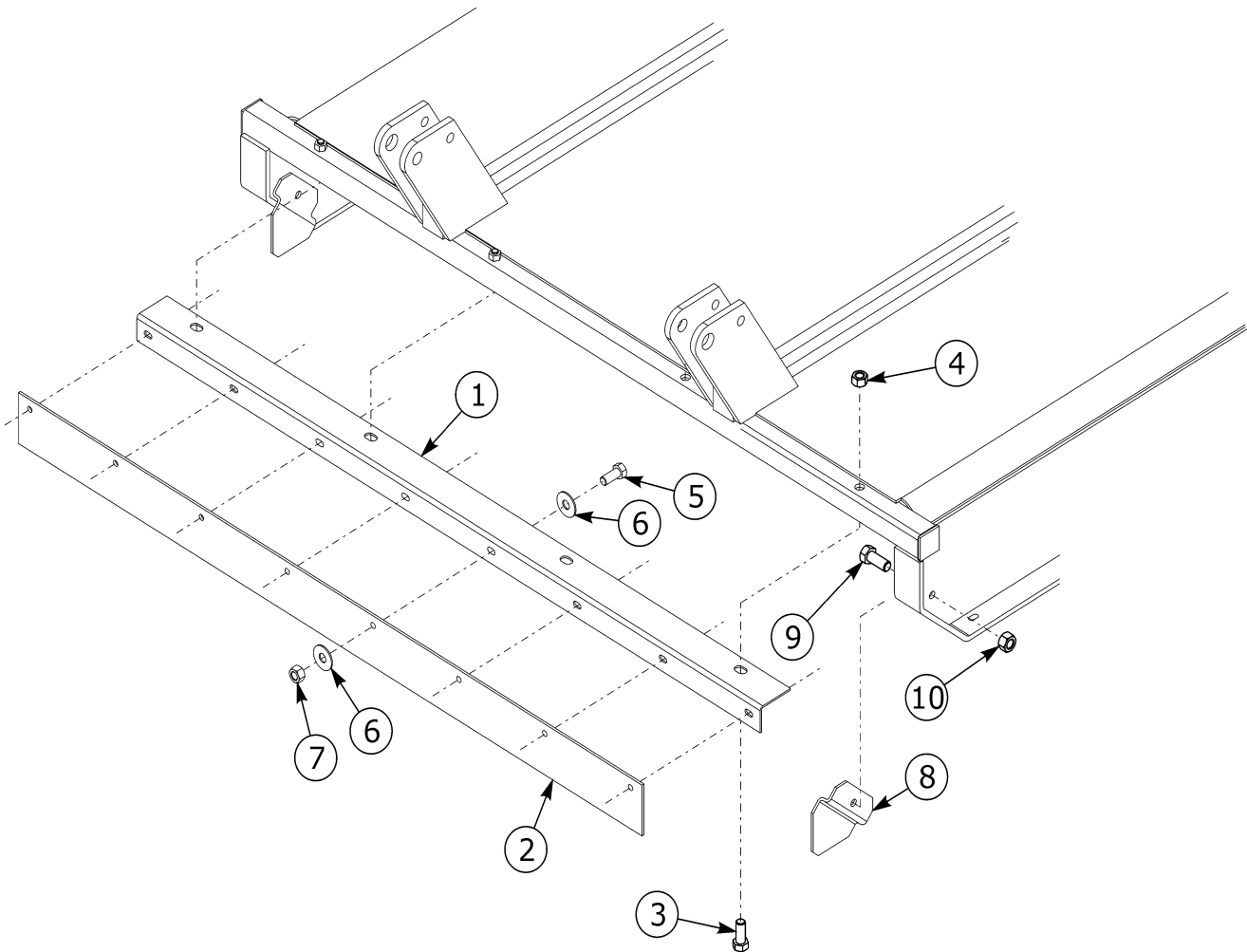
DEFLECTOR ASSEMBLY - FRONT - CY60 Rev 11-06



ITEM	PART NO.	QTY.	DESCRIPTION
1	00758240	1	BRACKET,MOUNT,FRONT DEFLECTOR
2	00775704	1	PANEL, RUBBER FRONT DEFLECTOR
3	10318000	4	HEXB 1/2NCX3 PL8
4	00001800	4	LOCKNUT TLM 1/2 NC PLB
5	63066100	8	HHCS 3/8NCX1-1/2
6	00011100	8	FLATWASHER STD 3/8
7	00015800	8	LOCKNUT TLM 3/8-NC PLC
8	00775739	2	DEFLECT SIDE FORMED
9	02030700	2	HHCS 1/2-13UNC 1-1/4 PL5
10	00001800	2	LOCKNUT TLM 1/2 NC PLB

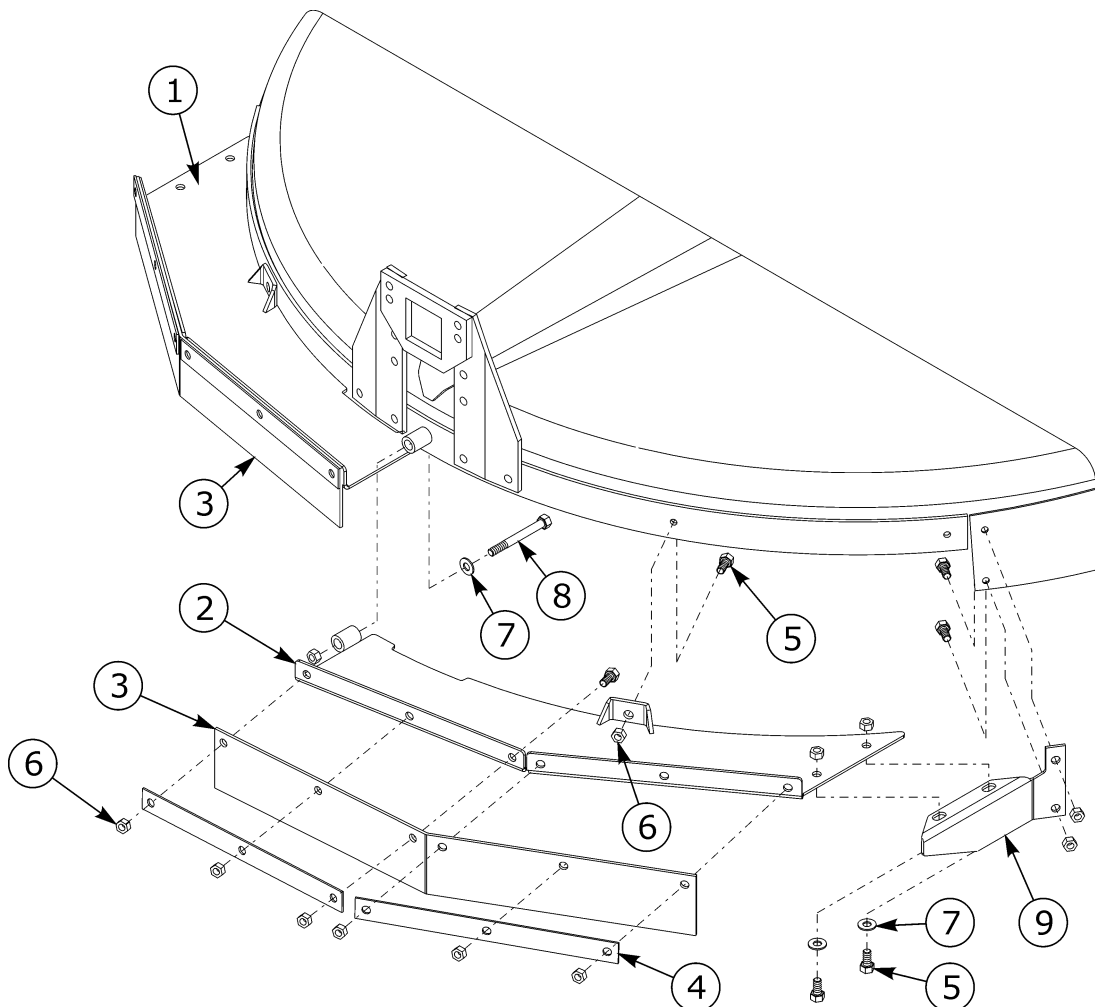
CY60/72 (Aug-05) S/N CY60 21480 - CY72 22584 - Current Rev 05-07

DEFLECTOR ASSEMBLY - FRONT - CY72 Rev 11-06



ITEM	PART NO.	QTY.	DESCRIPTION
	00775702	-	ASY,DEFL FRT COMPT CY72
1	00758244	1	BRACKET, DEFLECTOR MOUNT FRONT
2	00775697	1	PANEL, RUBBER FRONT DEFLECTOR
3	10318000	4	HEXB 1/2NCX3 PL8
4	00001800	4	LOCKNUT TLM 1/2 NC PLB
5	63066100	9	HHCS 3/8NCX1-1/2
6	00011100	9	FLATWASHER STD 3/8
7	00015800	9	LOCKNUT TLM 3/8-NC PLC
8	00775739	2	DEFLECT SIDE FORMED
9	02030700	2	HHCS 1/2-13UNC 1-1/4 PL5
10	00001800	2	LOCKNUT TLM 1/2 NC PLB

DEFLECTOR ASSEMBLY - REAR - CY 60 & 72 Rev 11-06



ITEM	PART NO.	CY60	CY72	DESCRIPTION
	00775660	1	-	COMPLETE CY60 DEFLECTOR ASSY
	00775683	-	1	COMPLETE CY72 DEFLECTOR ASSY
1	00775503	-	1	DEFLECTOR - CY72 LEFT
	00773667	1	-	DEFLECTOR - CY60 LEFT
2	00775502	-	1	DEFLECTOR - CY72 RIGHT
	00773663	1	-	DEFLECTOR - CY60 RIGHT
3	00775662	1	-	DEFLECTOR DEBRIS CY60
	00775673	-	1	DEFLECTOR DEBRIS CY72
4	00773658	4	4	BAR, REAR STRAP CY60
	00775514	4	4	BAR, REAR STRAP CY72
5	02030700	18	22	BOLT
6	00001800	19	23	LOCKNUT
7	00002700	13	17	FLATWASHER
8	7B81332	1	1	BOLT
9	00775655	1	1	PLATE, REAR RH
	00775656	1	1	PLATE, REAR LH

CY60/72 (Aug-05) S/N CY60 21480 - CY72 22584 - Current Rev 05-07

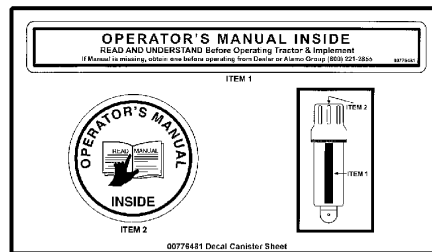
SAFETY DECAL SHEETS



2



3



1

ITEM	PART NO.	QTY.	DESCRIPTION
1	00776481	1	SHEET,MANUALCANISTER DECAL
2	00773314	1	DECAL SHEET CY60
3	00773315	1	DECAL SHEET CY72
4	2738332	1	DECAL, RED OBLONG REFLECTOR (NOT SHOWN)

SERVIS-RHINO

LIMITED WARRANTY

1. LIMITED WARRANTIES

- 1.01. Servis-Rhino warrants for one year from the purchase date to the original non-commercial, governmental, or municipal purchaser ("Purchaser") and warrants for six months to the original commercial or industrial purchaser ("Purchaser") that the goods purchased are free from defects in material or workmanship.
- 1.02. Manufacturer will replace for the Purchaser any part or parts found, upon examination at one of its factories, to be defective under normal use and service due to defects in material or workmanship.
- 1.03. This limited warranty does not apply to any part of the goods which has been subjected to improper or abnormal use, negligence, alteration, modification, or accident, damaged due to lack of maintenance or use of wrong fuel, oil, or lubricants, or which has served its normal life. This limited warranty does not apply to any part of any internal combustion engine, or expendable items such as blades, shields, guards, or pneumatic tires except as specifically found in your Operator's Manual.
- 1.04. Except as provided herein, no employee, agent, Dealer, or other person is authorized to give any warranties of any nature on behalf of Manufacturer.

2. REMEDIES AND PROCEDURES.

- 2.01. This limited warranty is not effective unless the Purchaser returns the Registration and Warranty Form to Manufacturer within 30 days of purchase.
- 2.02. Purchaser claims must be made in writing to the Authorized Dealer ("Dealer") from whom Purchaser purchased the goods or an approved Authorized Dealer ("Dealer") within 30 days after Purchaser learns of the facts on which the claim is based.
- 2.03. Purchaser is responsible for returning the goods in question to the Dealer.
- 2.04. If after examining the goods and/or parts in question, Manufacturer finds them to be defective under normal use and service due to defects in material or workmanship, Manufacturer will:
 - (a) Repair or replace the defective goods or part(s) or
 - (b) Reimburse Purchaser for the cost of the part(s) and reasonable labor charges (as determined by Manufacturer) if Purchaser paid for the repair and/or replacement prior to the final determination of applicability of the warranty by Manufacturer.The choice of remedy shall belong to Manufacturer.
- 2.05. Purchaser is responsible for any labor charges exceeding a reasonable amount as determined by Manufacturer and for returning the goods to the Dealer, whether or not the claim is approved. Purchaser is responsible for the transportation cost for the goods or part(s) from the Dealer to the designated factory.

3. LIMITATION OF LIABILITY.

- 3.01. MANUFACTURER DISCLAIMS ANY EXPRESS (EXCEPT AS SET FORTH HEREIN) AND IMPLIED WARRANTIES WITH RESPECT TO THE GOODS INCLUDING, BUT NOT LIMITED TO, MERCHANTABILITY AND FITNESS FOR A PARTICULAR PURPOSE.
- 3.02. MANUFACTURER MAKES NO WARRANTY AS TO THE DESIGN, CAPABILITY, CAPACITY, OR SUITABILITY FOR USE OF THE GOODS.
- 3.03. EXCEPT AS PROVIDED HEREIN, MANUFACTURER SHALL HAVE NO LIABILITY OR RESPONSIBILITY TO PURCHASER OR ANY OTHER PERSON OR ENTITY WITH RESPECT TO ANY LIABILITY, LOSS, OR DAMAGE CAUSED OR ALLEGED TO BE CAUSED DIRECTLY OR INDIRECTLY BY THE GOODS INCLUDING, BUT NOT LIMITED TO, ANY INDIRECT, SPECIAL, CONSEQUENTIAL, OR INCIDENTAL DAMAGES RESULTING FROM THE USE OR OPERATION OF THE GOODS OR ANY BREACH OF THIS WARRANTY. NOT WITHSTANDING THE ABOVE LIMITATIONS AND WARRANTIES, MANUFACTURER'S LIABILITY HEREUNDER FOR DAMAGES INCURRED BY PURCHASER OR OTHERS SHALL NOT EXCEED THE PRICE OF THE GOODS.
- 3.04. NO ACTION ARISING OUT OF ANY CLAIMED BREACH OF THIS WARRANTY OR TRANSACTIONS UNDER THIS WARRANTY MAY BE BROUGHT MORE THAN TWO (2) YEARS AFTER THE CAUSE OF ACTION HAS OCCURRED.

4. MISCELLANEOUS.

- 4.01. Proper Venue for any lawsuits arising from or related to this limited warranty shall be only in Guadalupe County, Texas.
- 4.02. Manufacturer may waive compliance with any of the terms of this limited warranty, but no waiver of any terms shall be deemed to be a waiver of any other term.
- 4.03. If any provision of this limited warranty shall violate any applicable law and is held to be unenforceable, then the invalidity of such provision shall not invalidate any other provisions herein.
- 4.04. Applicable law may provide rights and benefits to purchaser in addition to those provided herein.

KEEP FOR YOUR RECORDS

ATTENTION: Purchaser should fill in the blanks below for his reference when buying repair parts and/or for proper machine identification when applying for warranty.

Servis-Rhino Implement Model _____ Serial Number _____

Date Purchased _____ Dealer _____

ATTENTION:
READ YOUR OPERATOR'S MANUAL

RHINO[®]
1020 S. Sangamon Ave.
Gibson City, IL 60936
800-446-5158
Email: parts@servis-rhino.com





TO THE OWNER/OPERATOR/DEALER

To keep your implement running efficiently and safely, read your manual thoroughly and follow these directions and the Safety Messages in this Manual. The Table of Contents clearly identifies each section where you can easily find the information you need.

The OCCUPATIONAL SAFETY AND HEALTH ACT (1928.51 Subpart C) makes these minimum safety requirements of tractor operators:

REQUIRED OF THE OWNER:

1. Provide a Roll-Over-Protective Structure that meets the requirements of this Standard; and
2. Provide Seatbelts that meet the requirements of this paragraph of this Standard and SAE J4C; and
3. Ensure that each employee uses such Seatbelt while the tractor is moving; and
4. Ensure that each employee tightens the Seatbelt sufficiently to confine the employee to the protected area provided by the ROPS.

REQUIRED OF THE OPERATOR

1. Securely fasten seatbelt if the tractor has a ROPS.
2. Where possible, avoid operating the tractor near ditches, embankments, and holes.
3. Reduce speed when turning, crossing slopes, and on rough, slick, or muddy surfaces.
4. Stay off slopes too steep for safe operation.
5. Watch where you are going - especially at row ends, on roads, and around trees.
6. Do not permit others to ride.
7. Operate the tractor smoothly - no jerky turns, starts, or stops.
8. Hitch only to the drawbar and hitch points recommended by the tractor manufacturer.
9. When the tractor is stopped, set brakes securely and use park lock, if available.



Keep children away from danger all day, every day...



Equip tractors with rollover protection (ROPS) and keep all machinery guards in place...



Please work, drive, play and live each day with care and concern for your safety and that of your family and fellow citizens.

