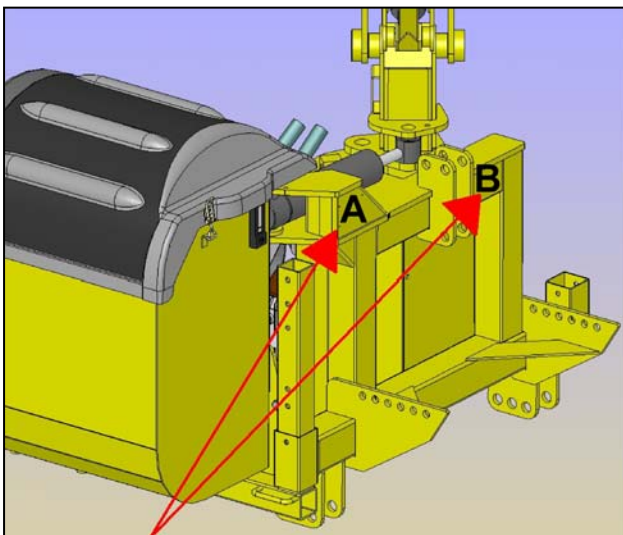


## HIGH CAPACITY COOLER KIT (Part No. 7451824)

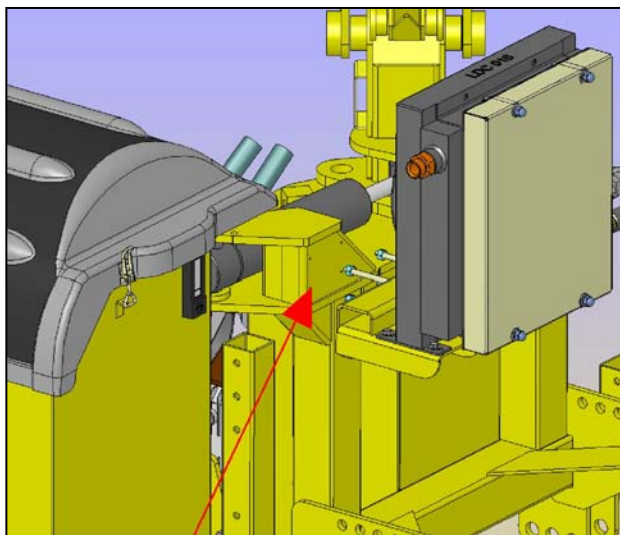
High capacity cooler kits are available where additional cooling of the hydraulic fluid is required due to warm and/or humid climates or arduous and demanding working conditions. Where the cooler is added as an aftermarket fitment it must be fixed to the front of the main frame in the location of the existing serial number plate – the serial plate will therefore need to be re-sited to an alternative location on the main frame - it is vital that this item is re-fitted to the machine for both security and identification purposes.

The procedure for fitting the cooler kit is as follows – the illustrations show the cooler fitted to a left hand build cable TI machine:

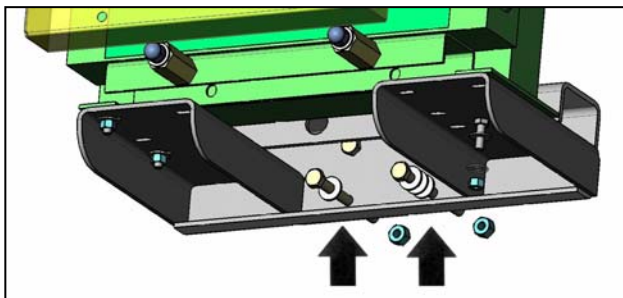
### Installation Procedure



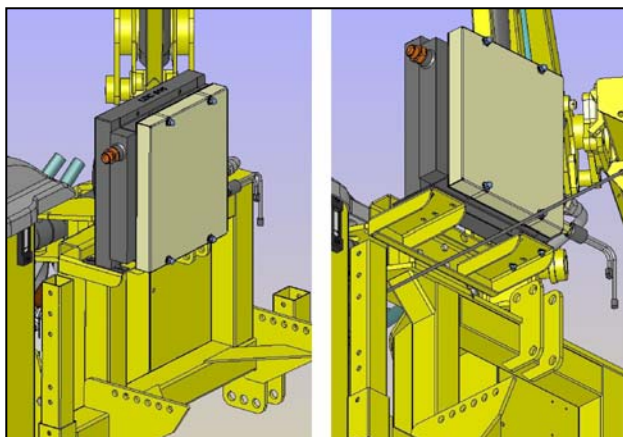
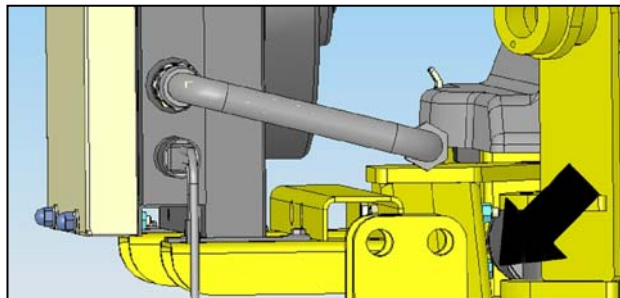
Drill out the pop rivets ( $\varnothing 3.6\text{mm}$ ) that secure the serial number plate to the main frame at location 'A' - relocate serial number plate to location 'B'.



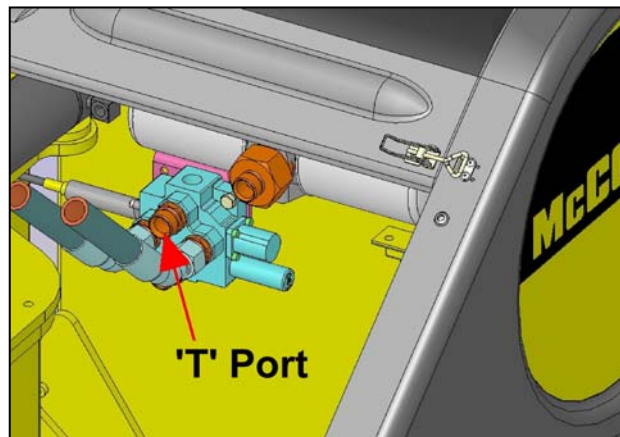
Drill out the 4 existing holes to increase their diameter to 11.0mm - bolt the cooler bracket through these holes.

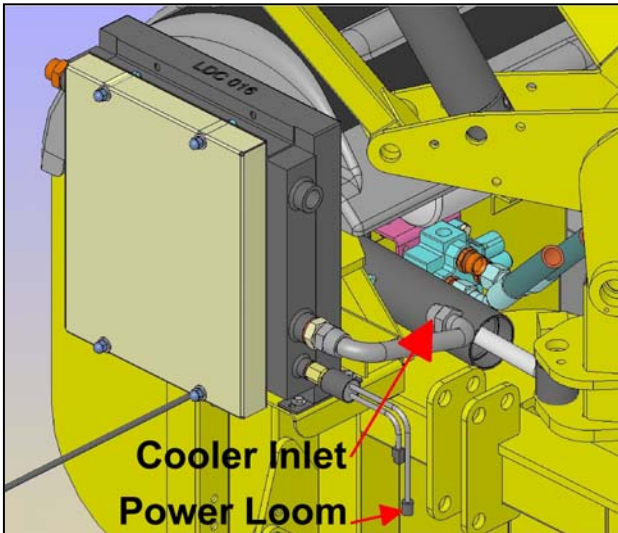


Note placement of additional washers on the right hand bolt to reduce bolt depth for slew ram clearance - use on opposing bolt where fitment is to R/H build machines.

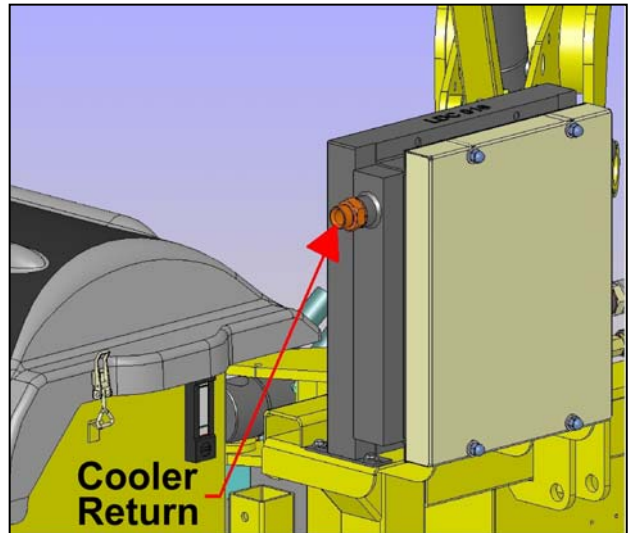


The fitted position should be as shown in the diagrams above.

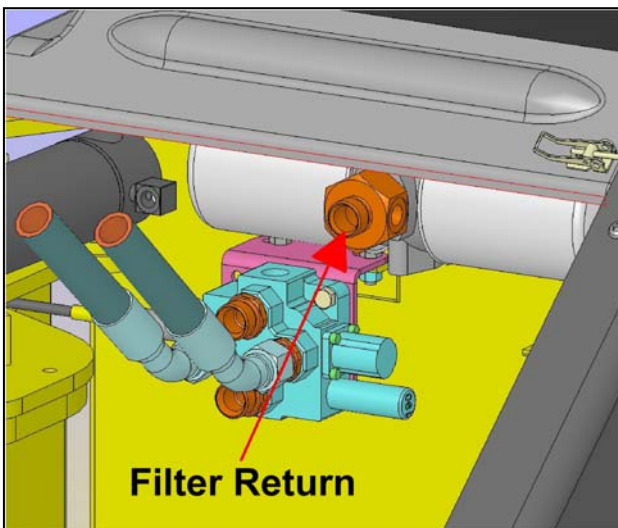




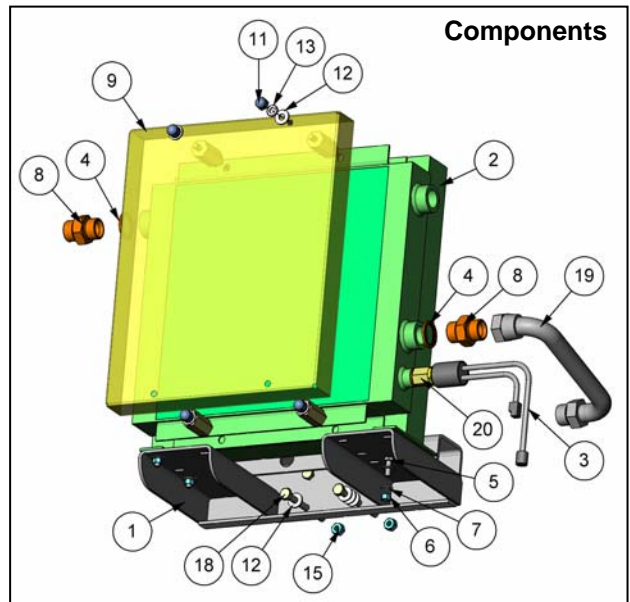
Cooler Inlet Pipe is located above the Thermostat / Fan Control Unit. Connect the Power Loom to tractor auxiliary supply.



Connect Cooler Return Pipe to the Filter Return located on the Hydraulic Tank



Filter Return Connection on filter housing located on the Hydraulic Tank.



### COOLER COMPONENT IDENTIFICATION

- |                                  |                                     |
|----------------------------------|-------------------------------------|
| 1. COOLER BRACKET                | 12. FLAT WASHER                     |
| 2. OIL COOLER                    | 13. SPRING WASHER                   |
| 3. COOLER LOOM c/w RELAY         | 14. EDGING STRIP (not shown)        |
| 4. BONDED SEAL                   | 15. SELF-LOCKING NUT                |
| 5. SETSCREW                      | 16. HOSE - 1" BSP FS/F90 x 2700mm * |
| 6. SELF-LOCKING NUT              | 17. HOSE - 1" BSP FS/FS 1600mm **   |
| 7. FLAT WASHER                   | 18. BOLT                            |
| 8. ADAPTOR                       | 19. HYDRAULIC PIPE                  |
| 9. COOLER BASKET                 | 20. ADAPTOR                         |
| 10. STAND OFF                    | 21. BONDED SEAL                     |
| 11. DOME NUT                     |                                     |
| * Cooler Supply Hose (not shown) | ** Cooler Return Hose (not shown)   |

NOTE: Depending on the specific machine build, tank fittings 8581425, 8581422, 8600302, 8581110 & 8581110 may be required if not already fitted.