

Publication 200
May 1994
Part No. 1270850

EZI-EDGER

TRACTOR MOUNTED EDGING ATTACHMENT



Operator & Parts Manual



IMPORTANT

VERIFICATION OF WARRANTY REGISTRATION



DEALER WARRANTY INFORMATION & REGISTRATION VERIFICATION

It is imperative that the selling dealer registers this machine with McConnel Limited before delivery to the end user – failure to do so may affect the validity of the machine warranty.

To register machines go to the McConnel Limited web site at www.mcconnel.com, log onto 'Dealer Inside' and select the 'Machine Registration button' which can be found in the Service Section of the site. Confirm to the customer that the machine has been registered in the section below.

Should you experience any problems registering a machine in this manner please contact the McConnel Service Department on 01584 875848.

Registration Verification

Dealer Name:
Dealer Address:
Customer Name:
Date of Warranty Registration:/...../..... Dealer Signature:

NOTE TO CUSTOMER / OWNER

Please ensure that the above section above has been completed and signed by the selling dealer to verify that your machine has been registered with McConnel Limited.

IMPORTANT: During the initial 'bedding in' period of a new machine it is the customer's responsibility to regularly inspect all nuts, bolts and hose connections for tightness and re-tighten if required. New hydraulic connections occasionally weep small amounts of oil as the seals and joints settle in – where this occurs it can be cured by re-tightening the connection – *refer to torque settings chart below*. The tasks stated above should be performed on an hourly basis during the first day of work and at least daily thereafter as part of the machines general maintenance procedure.

CAUTION: DO NOT OVER TORQUE HYDRAULIC FITTINGS AND HOSES

TORQUE SETTINGS FOR HYDRAULIC FITTINGS

HYDRAULIC HOSE ENDS		
BSP	Setting	Metric
1/4"	18 Nm	19 mm
3/8"	31 Nm	22 mm
1/2"	49 Nm	27 mm
5/8"	60 Nm	30 mm
3/4"	80 Nm	32 mm
1"	125 Nm	41 mm
1.1/4"	190 Nm	50 mm
1.1/2"	250 Nm	55 mm
2"	420 Nm	70 mm

PORT ADAPTORS WITH BONDED SEALS		
BSP	Setting	Metric
1/4"	34 Nm	19 mm
3/8"	47 Nm	22 mm
1/2"	102 Nm	27 mm
5/8"	122 Nm	30 mm
3/4"	149 Nm	32 mm
1"	203 Nm	41 mm
1.1/4"	305 Nm	50 mm
1.1/2"	305 Nm	55 mm
2"	400 Nm	70 mm

WARRANTY POLICY

WARRANTY REGISTRATION

All machines must be registered, by the selling dealer with McConnel Ltd, before delivery to the end user. On receipt of the goods it is the buyer's responsibility to check that the Verification of Warranty Registration in the Operator's Manual has been completed by the selling dealer.

1. LIMITED WARRANTIES

- 1.01. *All mounted machines supplied by McConnel Ltd are warranted to be free from defects in material and workmanship from the date of sale to the original purchaser for a period of 12 months, unless a different period is specified.
All Self Propelled Machines supplied by McConnel Ltd are warranted to be free from defects in material and workmanship from the date of sale to the original purchaser for a period of 12 months or 1500 hours. Engine warranty will be specific to the Manufacturer of that unit.*
- 1.02. *All spare parts supplied by McConnel Ltd and purchased by the end user are warranted to be free from defects in material and workmanship from the date of sale to the original purchaser for a period of 6 months. All parts warranty claims must be supported by a copy of the failed part invoice to the end user. We cannot consider claims for which sales invoices are not available.*
- 1.03. *The warranty offered by McConnel Ltd is limited to the making good by repair or replacement for the purchaser any part or parts found, upon examination at its factory, to be defective under normal use and service due to defects in material or workmanship. Returned parts must be complete and unexamined. Pack the component(s) carefully so that any transit damage is avoided. All ports on hydraulic items should be drained of oil and securely plugged to prevent seepage and foreign body ingress. Certain other components, electrical items for example, may require particular care when packing to avoid damage in transit.*
- 1.04. *This warranty does not extend to any product from which McConnel Ltd's serial number plate has been removed or altered.*
- 1.05. *The warranty policy is valid for machines registered in line with the terms and conditions detailed and on the basis that the machines do not extend a period of 24 months or greater since their original purchase date, that is the original invoice date from McConnel Limited.
Machines that are held in stock for more than 24 months cannot be registered for warranty.*
- 1.06. *This warranty does not apply to any part of the goods, which has been subjected to improper or abnormal use, negligence, alteration, modification, fitment of non-genuine parts, accident damage, or damage resulting from contact with overhead power lines, damage caused by foreign objects (e.g. stones, iron, material other than vegetation), failure due to lack of maintenance, use of incorrect oil or lubricants, contamination of the oil, or which has served its normal life. This warranty does not apply to any expendable items such as blades, belts, clutch linings, filter elements, flails, flap kits, skids, soil engaging parts, shields, guards, wear pads, pneumatic tyres or tracks.*
- 1.07. *Temporary repairs and consequential loss - i.e. oil, downtime and associated parts are specifically excluded from the warranty.*
- 1.08. *Warranty on hoses is limited to 12 months and does not include hoses which have suffered external damage. Only complete hoses may be returned under warranty, any which have been cut or repaired will be rejected.*
- 1.09. *Machines must be repaired immediately a problem arises. Continued use of the machine after a problem has occurred can result in further component failures, for which McConnel Ltd cannot be held liable, and may have safety implications.*
- 1.10. *If in exceptional circumstances a non McConnel Ltd part is used to effect a repair, warranty reimbursement will be at no more than McConnel Ltd's standard dealer cost for the genuine part.*

- 1.11. *Except as provided herein, no employee, agent, dealer or other person is authorised to give any warranties of any nature on behalf of McConnell Ltd.*
- 1.12. *For machine warranty periods in excess of 12 months the following additional exclusions shall apply:*
 - 1.12.1. *Hoses, exposed pipes and hydraulic tank breathers.*
 - 1.12.2. *Filters.*
 - 1.12.3. *Rubber mountings.*
 - 1.12.4. *External electric wiring.*
 - 1.12.5. *Bearings and seals*
 - 1.12.6. *External Cables, Linkages*
 - 1.12.7. *Loose/Corroded Connections, Light Units, LED's*
 - 1.12.8. *Comfort items such as Operator Seat, Ventilation, Audio Equipment*
- 1.13. *All service work, particularly filter changes, must be carried out in accordance with the manufacturer's service schedule. Failure to comply will invalidate the warranty. In the event of a claim, proof of the service work being carried out may be required.*
- 1.14. *Repeat or additional repairs resulting from incorrect diagnosis or poor quality previous repair work are excluded from warranty.*

NB Warranty cover will be invalid if any non-genuine parts have been fitted or used. Use of non-genuine parts may seriously affect the machine's performance and safety. McConnell Ltd cannot be held responsible for any failures or safety implications that arise due to the use of non-genuine parts.

2. REMEDIES AND PROCEDURES

- 2.01. *The warranty is not effective unless the Selling Dealer registers the machine, via the McConnell web site and confirms the registration to the purchaser by completing the confirmation form in the operator's manual.*
- 2.02. *Any fault must be reported to an authorised McConnell Ltd dealer as soon as it occurs. Continued use of a machine, after a fault has occurred, can result in further component failure for which McConnell Ltd cannot be held liable.*
- 2.03. *Repairs should be undertaken within two days of the failure. Claims submitted for repairs undertaken more than 2 weeks after a failure has occurred, or 2 days after the parts were supplied will be rejected, unless the delay has been authorised by McConnell Ltd. Please note that failure by the customer to release the machine for repair will not be accepted as a reason for delay in repair or submitting warranty claims.*
- 2.04. *All claims must be submitted, by an authorised McConnell Ltd Service Dealer, within 30 days of the date of repair.*
- 2.05. *Following examination of the claim and parts, McConnell Ltd will pay, at their discretion, for any valid claim the invoiced cost of any parts supplied by McConnell Ltd and appropriate labour and mileage allowances if applicable.*
- 2.06. *The submission of a claim is not a guarantee of payment.*
- 2.07. *Any decision reached by McConnell Ltd. is final.*

3. LIMITATION OF LIABILITY

- 3.01. *McConnell Ltd disclaims any express (except as set forth herein) and implied warranties with respect to the goods including, but not limited to, merchantability and fitness for a particular purpose.*
- 3.02. *McConnell Ltd makes no warranty as to the design, capability, capacity or suitability for use of the goods.*
- 3.03. *Except as provided herein, McConnell Ltd shall have no liability or responsibility to the purchaser or any other person or entity with respect to any liability, loss, or damage caused or alleged to be caused directly or indirectly by the goods including, but not limited to, any indirect, special, consequential, or incidental damages resulting from the use or operation of the goods or any breach of this warranty. Notwithstanding the above limitations and warranties, the manufacturer's liability hereunder for damages incurred by the purchaser or others shall not exceed the price of the goods.*
- 3.04. *No action arising out of any claimed breach of this warranty or transactions under this warranty may be brought more than one (1) year after the cause of the action has occurred.*

4. MISCELLANEOUS

- 4.01. *McConnel Ltd may waive compliance with any of the terms of this limited warranty, but no waiver of any terms shall be deemed to be a waiver of any other term.*
- 4.02. *If any provision of this limited warranty shall violate any applicable law and is held to be unenforceable, then the invalidity of such provision shall not invalidate any other provisions herein.*
- 4.03. *Applicable law may provide rights and benefits to the purchaser in addition to those provided herein.*

McConnel Limited



DECLARATION OF CONFORMITY

Conforming to EU Machinery Directive 2006/42/EC

We,

McCONNEL LIMITED, Temeside Works, Ludlow, Shropshire SY8 1JL, UK

Hereby declare that:

The Product; *Tractor Mounted Kerb Maintenance Attachment*

Product Code; *EZIE*

Serial No. & Date Type

Manufactured in; *United Kingdom*

Complies with the required provisions of the Machinery Directive 2006/42/EC
The machinery directive is supported by the following harmonized standards;

- BS EN ISO 12100 (2010) Safety of machinery – General principles for design – Risk assessment and risk reduction.
- BS EN 349 (1993) + A1 (2008) Safety of machinery - Minimum distances to avoid the entrapment with human body parts.
- BS EN ISO 14120 (2015) Safety of machinery - Guards general requirements for the design and construction of fixed and movable guards.
- BS EN 4413 (2010) Hydraulic fluid power. Safety requirements for systems and their components.

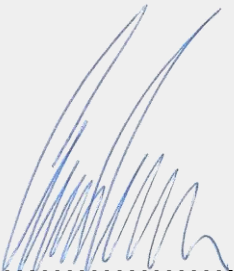
McCONNEL LIMITED operates an ISO 9001:2008 quality management system, certificate number: FM25970.

This system is continually assessed by the;

British Standards Institution (BSI), Beech House, Milton Keynes, MK14 6ES, UK

BSI is accredited by UK Accreditation Service, accreditation number: UKAS 003.

The EC declaration only applies if the machine stated above is used in accordance with the operating instructions.

Signed  *Responsible Person*
CHRISTIAN DAVIES on behalf of McCONNEL LIMITED

Status: *General Manager*

Date: *January 2018*



For Safety and Performance...

ALWAYS READ THE BOOK FIRST

McCONEL LIMITED

**Temeside Works
Ludlow
Shropshire
England**

**Telephone: +44 (0)1584 873131
www.mcconel.com**

▲ WARNING

Cancer and Reproductive Harm
www.P65Warnings.ca.gov

D960

Operating, servicing and maintaining this equipment can expose you to chemicals including gasoline, diesel fuel, lubricants, petroleum products, engine exhaust, carbon monoxide, and phthalates, which are known to the State of California to cause cancer and birth defects or other reproductive harm. To minimize exposure, avoid breathing exhaust, do not idle the engine except as necessary, service your vehicle in a well-ventilated area and wear gloves or wash your hands frequently when servicing your vehicle. Battery posts, terminals and related accessories contain lead and lead compounds, chemicals known to the state of California to cause cancer, birth defects or other reproductive harm. For more information go to www.P65Warnings.ca.gov. This website, operated by California's Office of Environmental Health Hazard Assessment, provides information about these chemicals and how individuals may be exposed to them.

GENERAL INFORMATION

Always read this manual before fitting or operating the machine – whenever doubt exists contact your dealer or the McConnel Service Department for advice and assistance.

Use only McConnel Genuine Service Parts on McConnel Equipment and Machines

DEFINITIONS – *The following definitions apply throughout this manual:*

WARNING

An operating procedure, technique etc. which can result in personal injury or loss of life if not observed carefully.

CAUTION

An operating procedure, technique etc. which can result in damage to either machine or equipment if not observed carefully.

NOTE

An operating procedure, technique etc. which is considered essential to emphasis.

LEFT AND RIGHT HAND

This term is applicable to the machine when attached to the tractor and is viewed from the rear – this also applies to tractor references.

MACHINE & DEALER INFORMATION

<i>Record the Serial Number of your machine on this page and always quote this number when ordering parts. Whenever information concerning the machine is requested remember also to state the make and model of tractor to which the machine is fitted.</i>	
Machine Serial Number:	Installation Date:
Machine Model details:	
Dealer Name:	
Dealer Address:	
Dealer Telephone No:	
Dealer Email Address:	

SERIAL PLATE

The machine is fitted with a Serial Number Plate stating the manufacturers name, machine, serial number and weight – when ordering parts or requesting advice please quote the machine name and serial number as stated on the plate.

FITTING

Tractor Selection

The tractor must be equipped with a front weight carrying bar and a double acting auxiliary oil supply.

Attachment to tractor

Hook the mounting bracket over the weight carrier bar and secure using clamp nuts and bolts.

Assemble the carrier bar. There are three positions for height adjustment. Select the position which gives approximately 15" (375mm) ground clearance beneath the bar. Do not tighten the nuts fully at this stage.

Remove the mounting and transport pins from the Ezi-Edger. Slide the Ezi-Edger onto the mounting bar. It may be necessary to connect up the hydraulics at this point (*see later*) to adjust the ram and facilitate fitting. Secure in position with the mounting pin through the end hole in the mounting bar.

Turn tractors wheel to full lock.

Insert the transport pin.

Slide the mounting bar horizontally to give a minimum clearance of 1" (25mm) between the tyre and the Ezi-Edger beam.

Tighten mounting bar clamps.

Connect up the hydraulics to the double acting auxiliary service. It will be necessary to add extension hoses and self seal couplings. Route the hoses carefully ensuring that they are not stretched, chafed or kinked during any operation of the tractor or Ezi-Edger.

OPERATION

Remove transport pin and the disc locking pin; this allows the disc to automatically follow the kerb compensating for steering variations.

Align disc with kerb edge and using the controls lower the disc until the depth shroud engages the kerb.

The main spring will allow the disc to lift if an obstacle is engaged. The spring pressure is factory set and should not be adjusted.

Adjust your forward speed to allow the disc time to cut. Too fast and the disc will bounce leaving uncut areas.

The spring loaded scraper should be adjusted such that it skims the kerb clearing the cut vegetation.

When operating on paths without a kerb to guide the disc the transport and disc locking pins are re-engaged. The line of cut is dictated by the tractor steering.

Transport

Raise the disc to its full height and engage the transport pin.

Storage

Coat exposed areas of the ram rod with grease.

Secure hose ends clear of the ground and cover ends with dust caps.

Removal from Tractor

Ensure disc is in the raised position.

- Disconnect hoses.
- Slacken the mounting bar clamps.
- Withdraw mounting bar together with Ezi-Edger.

The mounting bracket may be left permanently on the tractor.



For best performance ...

USE ONLY GENUINE McCONNEL SERVICE PARTS

*To be assured of the latest design improvements purchase your
'Genuine Replacements' from the 'Original Equipment Manufacturer'*

McCONNEL LIMITED

Through your local Dealer or Stockist

Always quote:

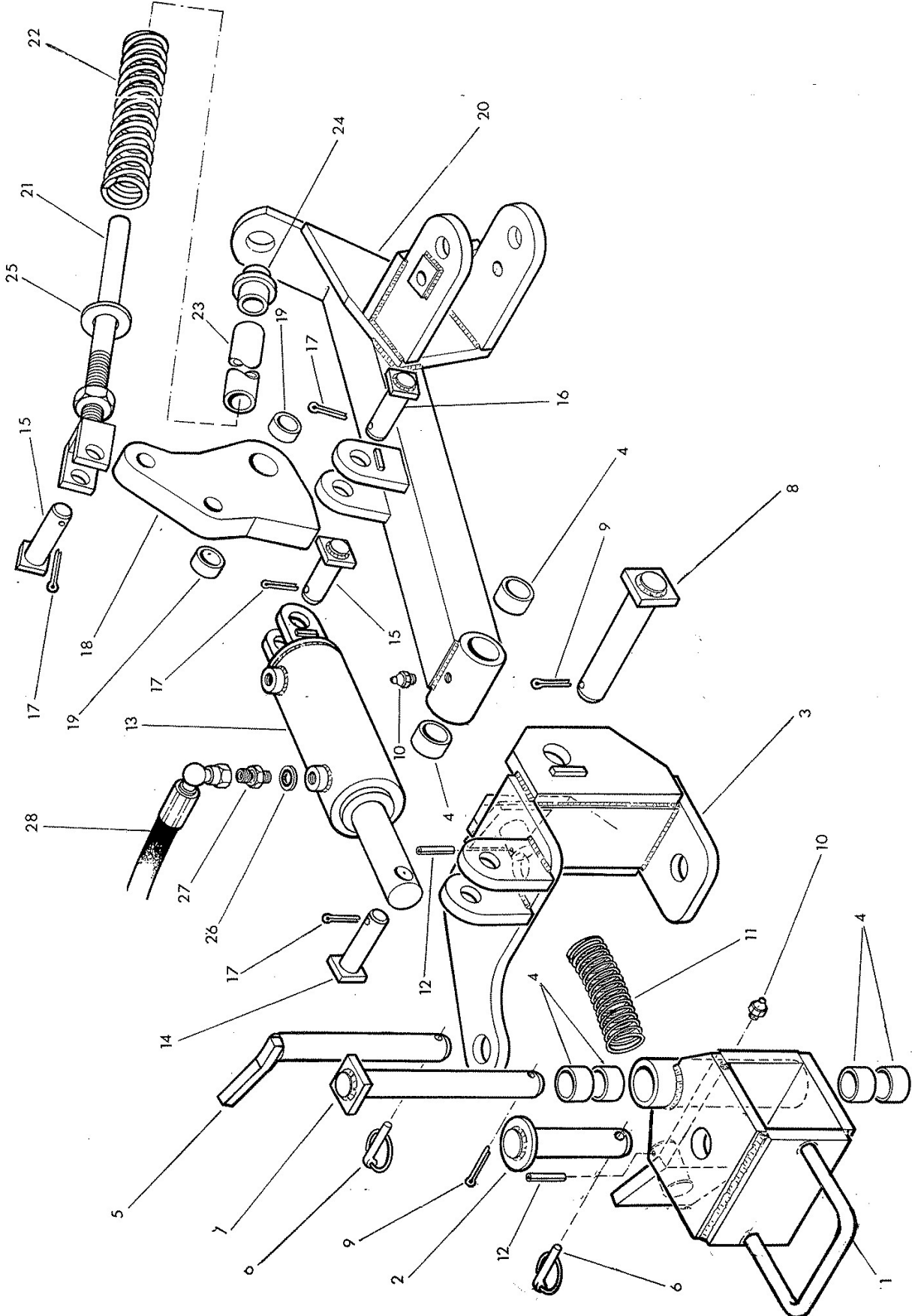
- ***Machine Type***
- ***Serial Number***
- ***Part Number***

*Design improvements may alter some of the parts listed in this manual –
the latest part will always be supplied when it is interchangeable with an earlier one.*

BODY ASSEMBLY

EZI-EDGER

McCONEL

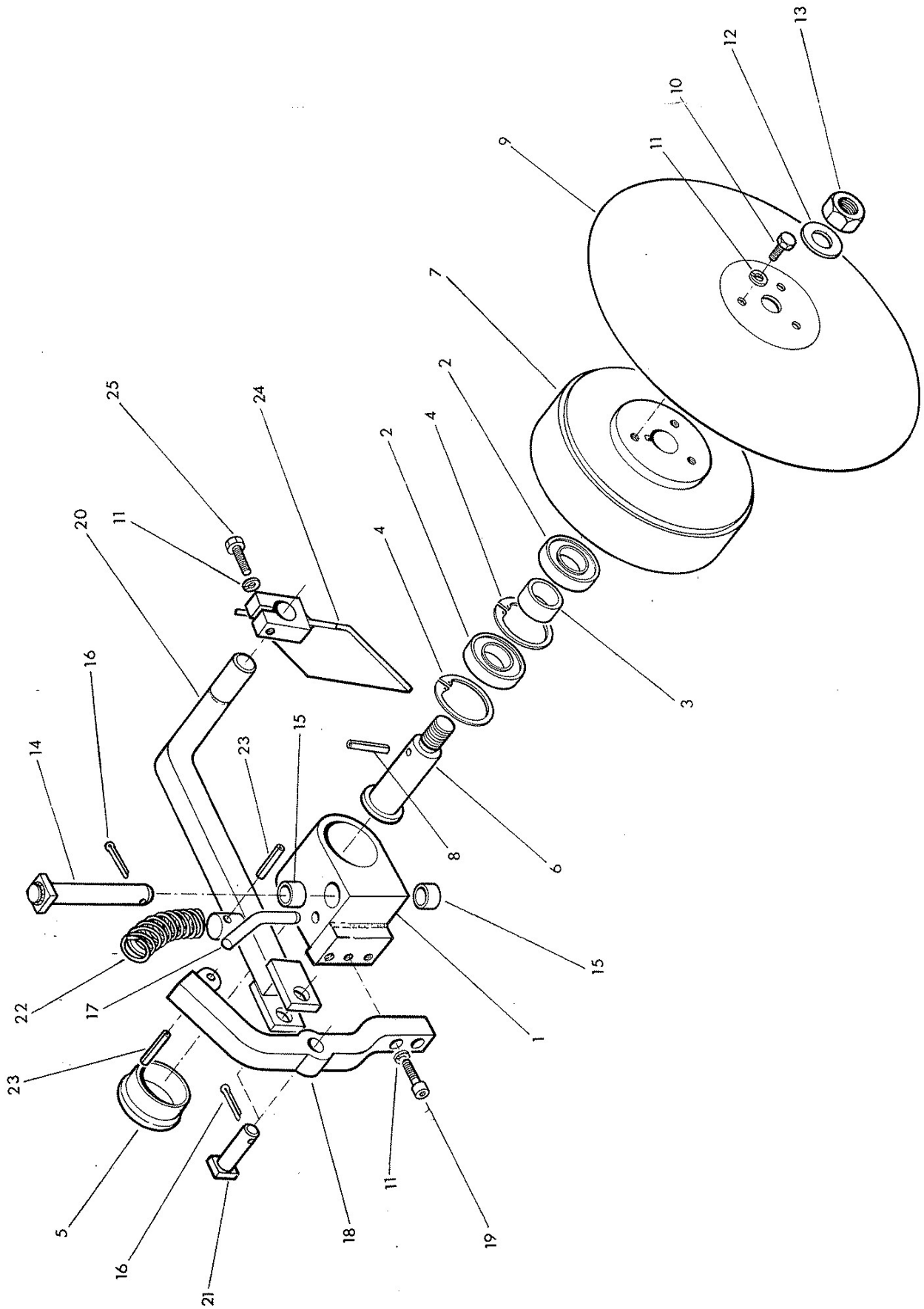


Ref	Part No.	Qty	Description
EZI EDGER BODY			
1	12 70 274	1	Swivel mounting bracket
2	12 70 303	1	Mounting pin
3	12 70 272	1	Pivot block L.hand
	12 70 271	1	Pivot block R.hand not illus.
4	12 70 091	6	Bush
5	12 70 081	1	Locking pin
6	04 31 217	2	Linch pin
7	12 70 314	1	Pivot pin
8	12 70 035	1	Pin - Beam pivot
9	95 01 406	2	Split pin
10	09 01 121	2	Greaser - straight
11	12 70 062	1	Spring
12	04 25 525	2	Spring dowel
13	12 70 277	1	Ram assembly
14	12 70 068	1	Pin - Ram rod
15	12 70 057	2	Pin - Ram rod/Spring clevis
16	12 70 065	1	Pin - pressure tongue
17	95 01 326	4	Split pin
18	12 70 309	1	Pressure tongue
19	60 01 216	2	Bush
20	12 70 336	1	Main beam L.hand
	12 70 335	1	Main beam R.hand not illus.
21	12 70 310	1	Push rod c/w nut
22	12 70 061	1	Spring
23	12 70 059	1	Compression stop tube
24	12 70 060	1	Spring location
25	91 00 108	1	Plain washer
26	86 50 103	2	Bonded seal
27	60 00 113	2	Union
28	85 31 323	2	Hose 3/8 BSP x 80" long SF-90F

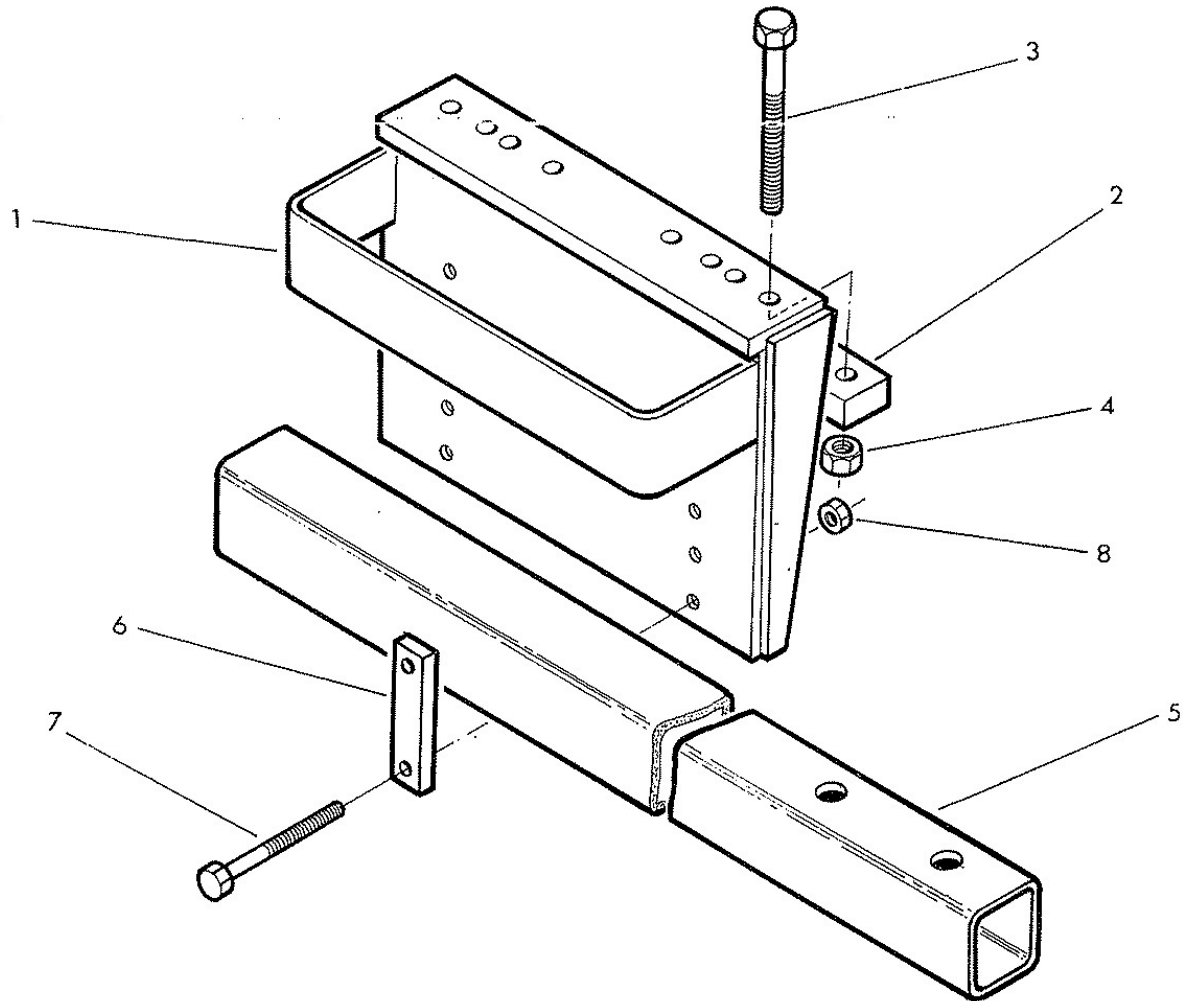
HUB ASSEMBLY

EZI-EDGER

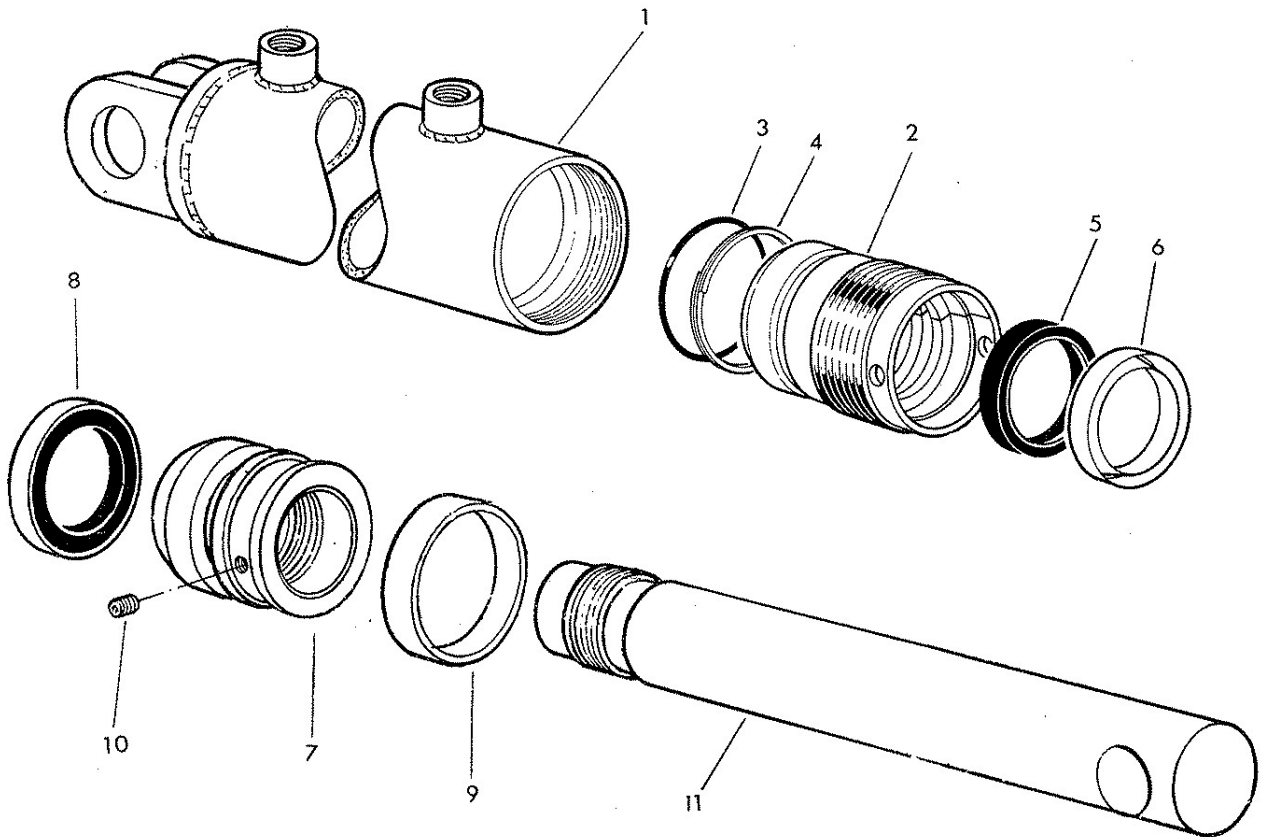
McCONNEL



Ref	Part No.	Qty	Description
HUB ASSEMBLY			
1	12 70 334	1	Bearing housing
2	06 00 100	2	Bearing
3	12 70 094	1	Bearing spacer
4	04 11 262	2	Internal circlip
5	0075 6492	1	Dust cover
6	12 70 098	1	Stub axle
7	12 70 328	1	Depth shroud
8	04 21 810	1	Spring dowel
9	12 70 099	1	Cutting disc
10	93 13 054	3	Set screw
11	91 00 204	6	Spring washer
12	91 00 108	1	Plain washer
13	01 51 007	1	Self locking nut
14	12 70 086	1	Hub pivot pin
15	12 70 088	2	Bush
16	95 01 326	2	Split pin
17	12 70 103	1	Pin - Hub locking
18	12 70 326	1	Support bracket
19	93 43 054	2	Capscrew
20	12 70 327	1	Scraper arm L.hand
	12 70 321	1	Scraper arm R.hand not illus.
21	12 70 057	1	Pin
22	12 70 062	1	Spring
23	04 25 525	2	Spring dowel
24	12 70 332	1	Scraper L.hand
	12 70 324	1	Scraper R.hand not illus.
25	93 13 084	1	Setscrew



Ref	Part No.	Qty	Description
CARRIER ASSEMBLY			
1	12 70 337	1	Mounting bracket
2	12 70 252	1	Clamp
3	02 11 566	2	Bolt
4	01 41 006	2	Self locking nut
5	12 70 107	1	Carrier bar
6	12 70 089	2	Clamp
7	05 253 25	4	Bolt
8	01 41 005	4	Self locking nut



Ref	Part No.	Qty	Description
	12 70 277		RAM ASSEMBLY
1	12 70 316	1	Ram Barrel
2	12 70 078	1	Gland housing
3	86 00 302	1	O ring
4	86 09 302	1	Anti extrusion ring
5	86 29 201	1	Gland seal
6	86 29 149	1	Wiper seal
7	12 70 077	1	Piston
8	86 29 187	1	Piston seal
9	86 29 188	1	Bearing ring
10	93 00 110	1	Grubscrew
11	12 70 315	1	Piston rod
	86 99 244		SEAL KIT



McConnel Limited, Temeside Works, Ludlow, Shropshire SY8 1JL. England.
Telephone: 01584 873131. Facsimile: 01584 876463. www.mcconnel.com