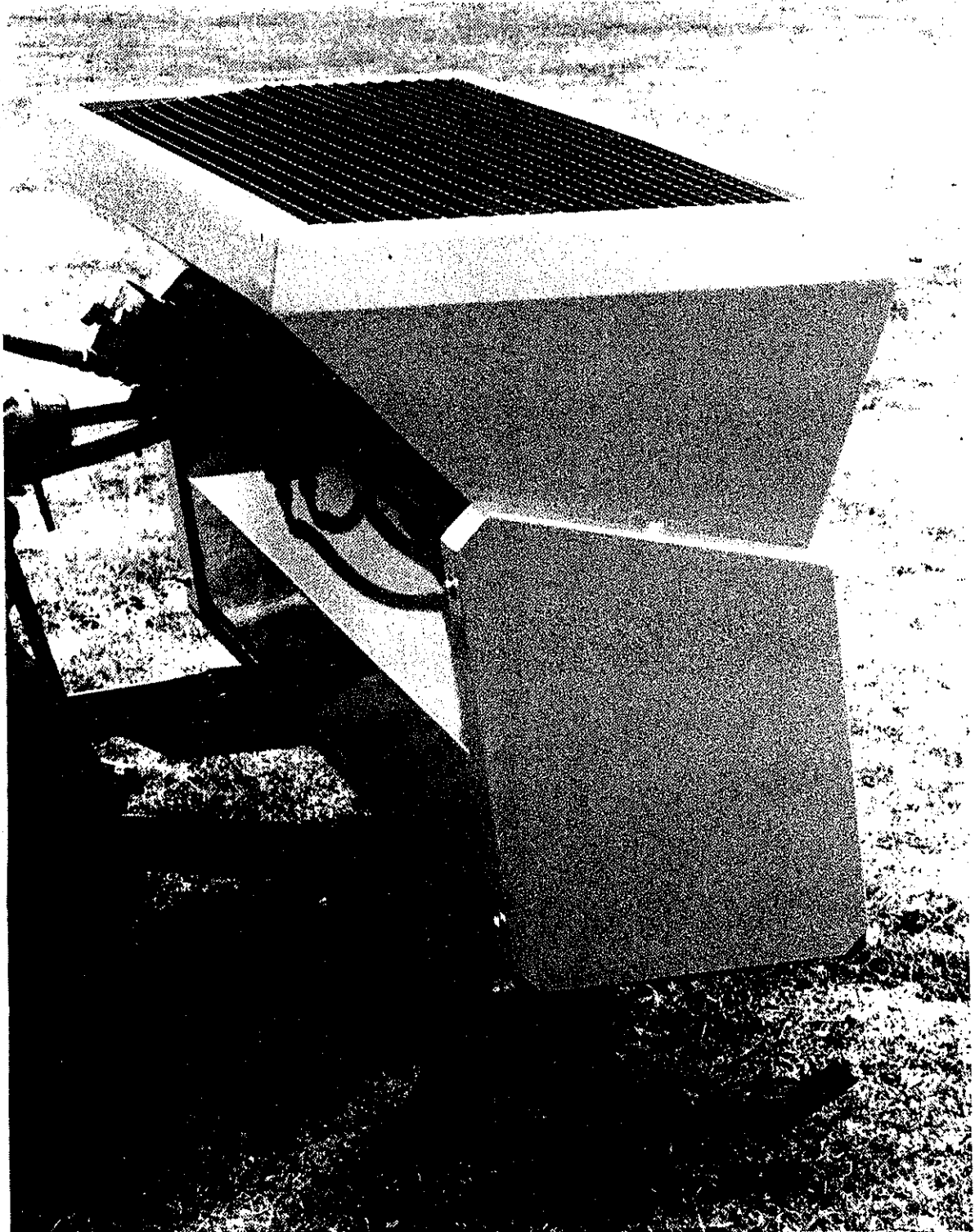


TOP DRESSER



EC DECLARATION OF CONFORMITY
conforming to EEC Directive 89/392/EEC

We,

McCONNEL LIMITED, Temeside Works, Ludlow,
Shropshire, SY8 1JL

declare under our sole responsibility that

the product (type) TOP DRESSER

Product Code T.D.50

Serial No. & Date

Type

Manufactured by the above Company/*

(*insert business name and full address if not stated above)

complies with the required provisions of the Directive 89/392/EEC,
and AMD 91/368/EEC, AMD 93/44/EEC, AMD 93/68/EEC and
conforms with European Norm. BS EN 292

Part 1:1991 Safety of Machinery - Terminology, methodology
Part 2:1991 Safety of Machinery - Technical specifications

and other national standards associated with its design and
construction as listed in the Technical File.

Signed JADAMES
on behalf of McCONNEL LIMITED

Responsible Person

Status DIRECTOR OF ENGINEERING Date

8.12.94

READ THE BOOK FIRST

It might save hours and pounds later

**When ordering spare parts always
quote the machine type and serial
number as well as the part number**

**Factory re-built service exchange
units of the major hydraulic components
are available from you dealer.**

GENERAL INFORMATION

Read this manual before fitting or operating the machine. If in doubt contact your dealer or the McConnel Service Department for assistance.

Use only McConnel spare parts on McConnel equipment and machines. Refer to the parts section before ordering spares.

DEFINITION

The following definitions apply throughout this manual:

WARNING

An operating procedure, technique etc., which can result in personal injury or loss of life if not observed carefully.

CAUTION

An operating procedure, technique etc., which can result in the damage of either machine or equipment if not observed carefully.

NOTE An operating procedure, technique etc., which is considered essential to emphasise.

LEFT AND RIGHT-HAND

This term is applicable to the machine when fitted to the tractor and viewed from the rear. This also applies to tractor references.

Record the serial number of your machine on this page and always quote this number when ordering spares. Whenever information concerning the machine is requested remember to also state the type of tractor to which it is fitted.

MACHINE
SERIAL
NUMBER

INSTALLATION
DATE

MODEL
DETAILS

DEALERS
NAME

DEALERS
TELEPHONE
NUMBER

SAFETY PRECAUTIONS

WARNING

NEVER

- ... Permit inexperienced personnel to operate machine without supervision
- ... Operate the machine without the correct guards in position.

ALWAYS

- ... Lower machine to the ground and switch off tractor engine before carrying out any maintenance or mechanical adjustments.
- ... Read instructions supplied with the material to be spread and observe all handling precautions.
- ... Fill the hopper with the stand legs on ground
- ... Use sufficient front counter weights to ensure stability under all working conditions.
- ... Keep check chains tight.

FITTING

TRACTOR SELECTION

The tractor must have category I three point linkage and be capable of lifting 500Kg at the ball ends.

TRACTOR PREPARATION

Adjust the lift arms until they are the same length.

Ballast weights may be necessary to ensure the tractor is stable under all working conditions.

ATTACHMENT TO TRACTOR

Reverse tractor squarely to the machine and connect draft links.

Connect top link.

Raise machine clear of the ground and tighten check chains.

Connect the hydraulic supply and return hoses to the tractors external services. Refer to tractor hand book. The supply hose is the right hand one when viewed from the tractor seat.

OPERATION

Ensure the stand legs are on the ground when the hopper is filled.

When hopper is full raise machine to the working height and proceed to the worksite. On undulating ground raise the feet to their highest position. Do not remove the feet as they give protection if an obstacle is encountered.

APPLICATION RATES

Application rates depend on the following variables.

Tractor forward speed

Tractor hydraulic flow rates

Control knob setting

The consistency of the material

The required application is achieved by trial and error and operator experience.

Drive at a comfortable speed and set the control knob until application rates are acceptable.

Note. Screwing the control clockwise decreases application rate and vice versa.

It is only 3/4 of 1 revolution from being fully closed to fully open. Further unscrewing beyond this will not increase application rates.

ADJUSTMENTS

Brush:- The brush at the rear will need to be adjusted up to the drum as wear occurs.

When new, study how much interference there is between the brush and the roller (ie approx 15mm) and when performance deteriorates adjust the brush position to regain this setting in the following manner.

Slacken brush carrier nuts A

Back off locknut B

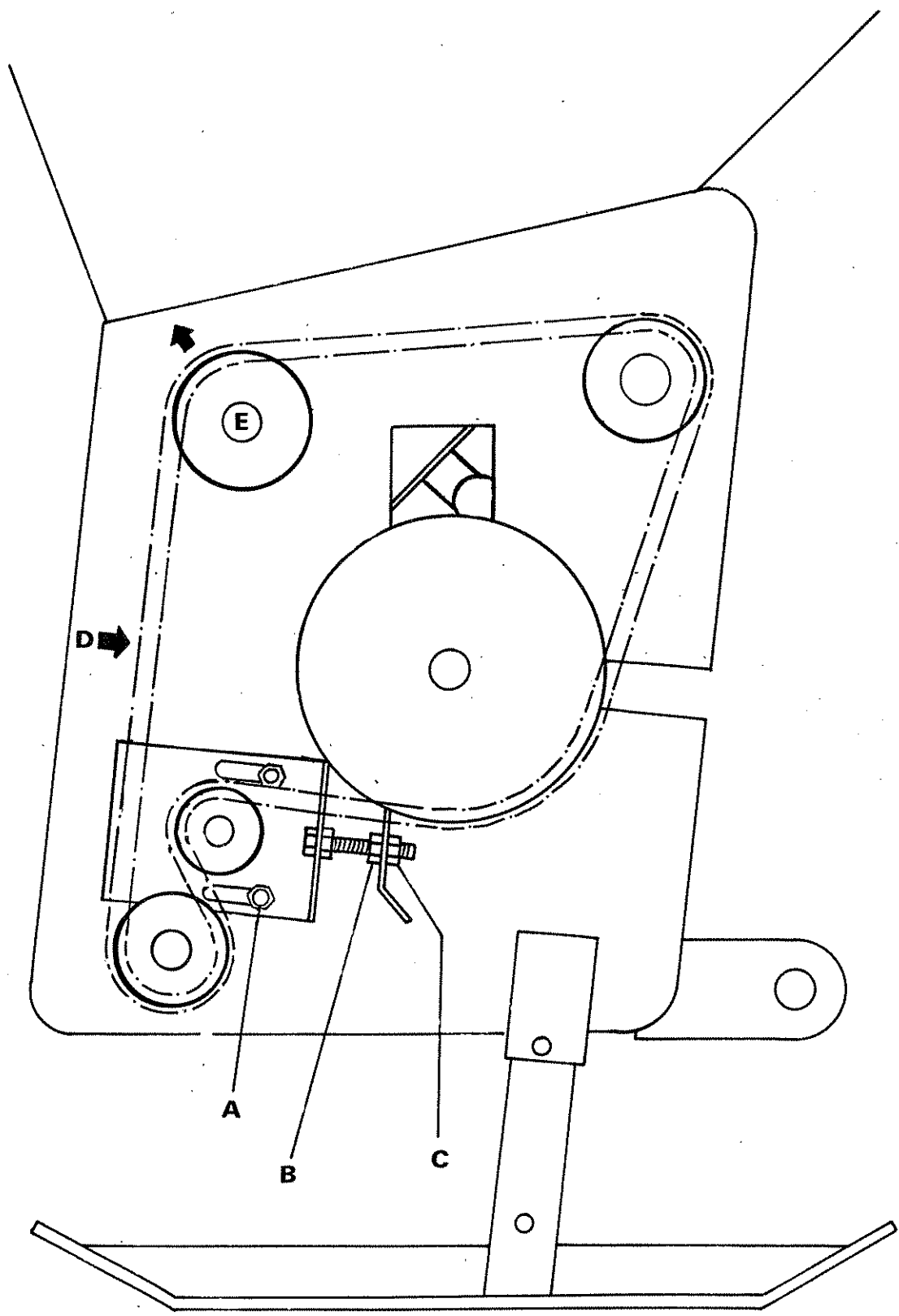
Adjust brush by clockwise rotation of nut C

Lock in position with B

Note it is very important that this adjustment is exactly equal at both ends. If not application will be uneven.

Drive chain:- The drive chain must have approx 6mm deflection at finger pressure at position D

Check periodically and maintain by adjusting idler roller E.



REMOVAL FROM TRACTOR

Select hard level site

Lower stand legs

Lower machine to the ground

Screw the application control knob fully in.

Disconnect hydraulics and stow clear of the ground. Seal ends of the hoses.

Disconnect 3 point linkage and drive away

STORAGE

Grease drive chain and oil hopper flap hinges

Clean out hopper and flush with water

SPARE PARTS MANUAL

FOR BEST PERFORMANCE....

USE ONLY McCONNEL SPARE PARTS

To be assured of the latest design improvements purchase your genuine replacements from the original equipment manufacturer F.W. McConnel Ltd. through your local dealer or stockist.

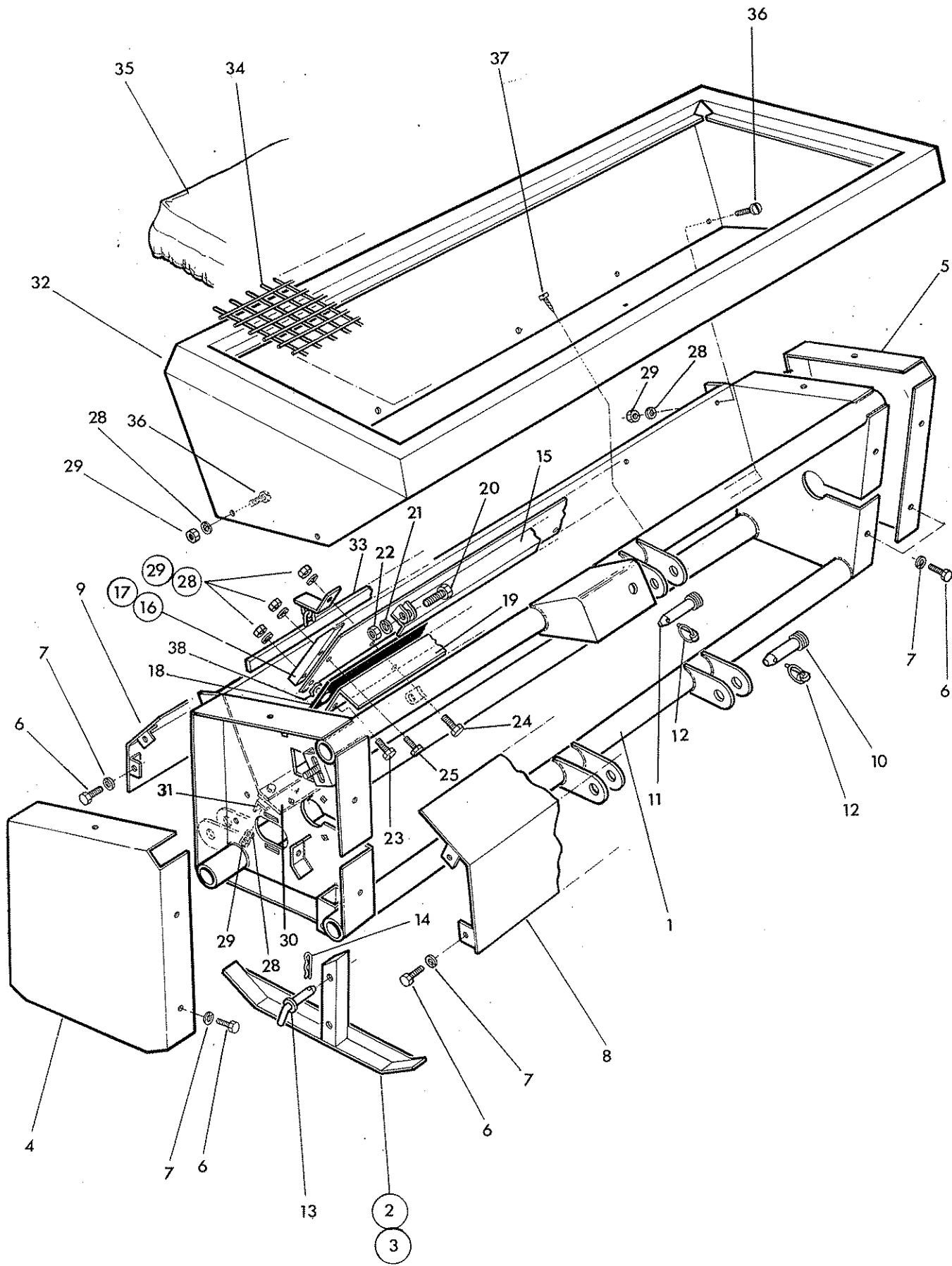
Always quote machine type and serial number as well as the part number.

Design improvement may have altered some of the parts listed in this manual - The latest part will always be supplied when it is interchangeable with an earlier one.

CHASSIS & HOPPER



McCORMEL



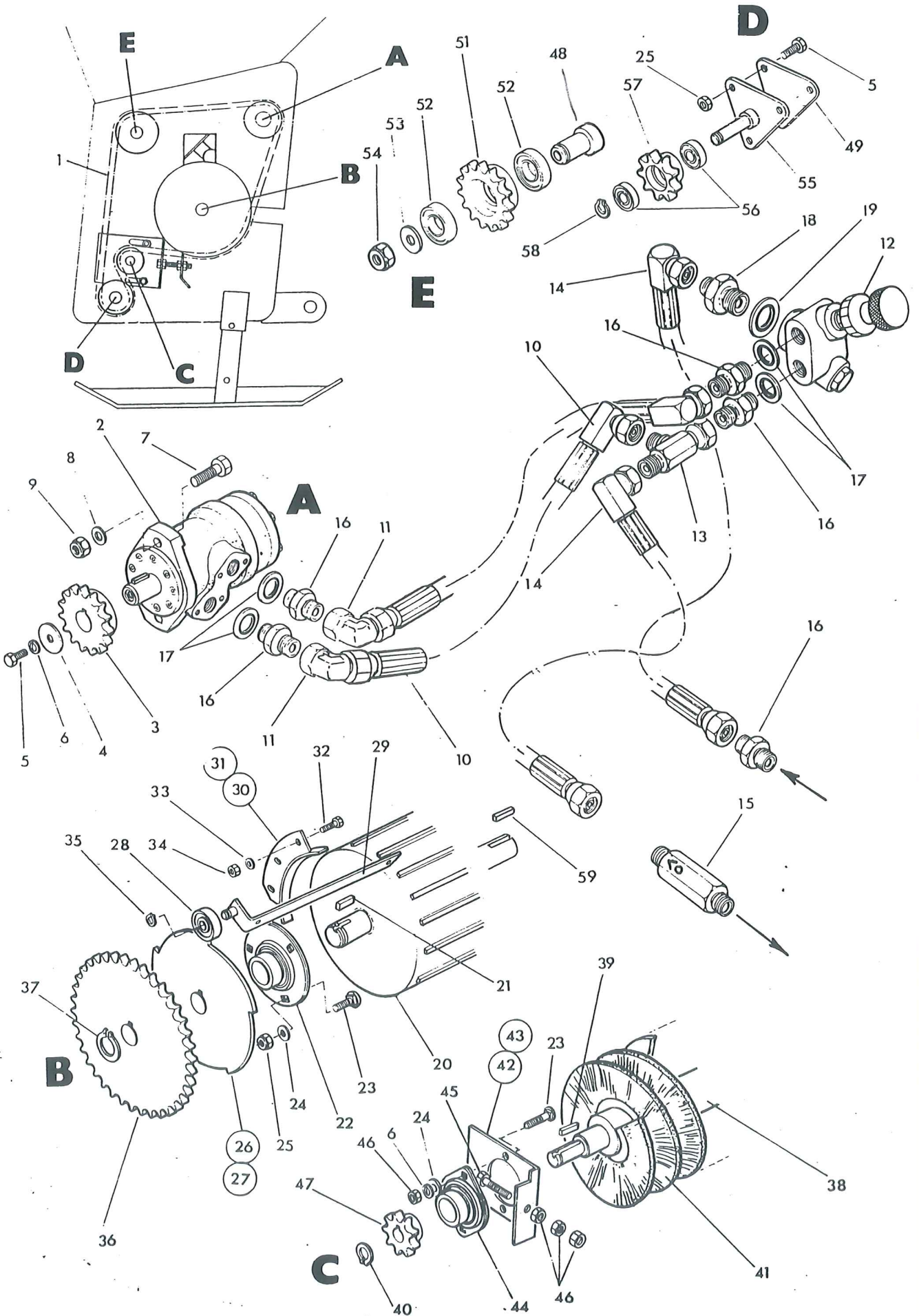


Ref	Part No.	Qty.	Description
CHASSIS AND HOPPER			
1	19 89 279	1	Chassis
2	19 89 267	1	Stand leg R. hand
3	19 89 268	1	Stand leg L. hand
4	19 89 277	1	End guard R. hand
5	19 89 278	1	End guard L. hand
6	93 43 044	18	Setscrew M8 x 20
7	91 00 204	18	Spring washer
8	19 89 274	1	Front guard
9	19 89 273	1	Rear guard
10	19 89 084	2	Draft link pin
11	71 92 026	1	Top link pin
12	04 31 217	2	Linch pin
13	19 89 010	2	Stand leg pin
14	04 31 105	2	Spring cotter
15	19 89 271	1	Flapper
16	19 89 023	1	Sealing angle R. hand
17	19 89 024	1	Sealing angle L. hand
18	19 89 256	1	Sealing strip - front
19	19 89 039	1	Support angle
20	93 13 086	3	Setscrew M12 x 40
21	91 00 106	3	Plain washer dia 12
22	91 43 006	3	Self locking nut M12
23	93 13 084	2	Setscrew M8 x 40
24	93 13 094	2	Setscrew M8 x 45
25	93 13 044	2	Setscrew M8 x 20
26	93 13 054	3	Setscrew M8 x 25
27	93 13 074	2	Setscrew M8 x 35
28	91 00 104	36	Plain washer dia 8
29	91 43 004	36	Self locking nut M8
30	19 89 257	1	Sealing strip - rear
31	19 89 038	1	Support angle
32	19 89 272	1	Hopper
33	19 89 270	1	Agitator
34	19 89 048	1	Guard mesh
35	19 89 086	1	Cover
36	93 73 024	9	Screw M8 x 20 pan head
37	93 00 142	3	Screw self tapping M5 x 12
38	19 89 097	4	Spacer

DRIVE INSTALLATION

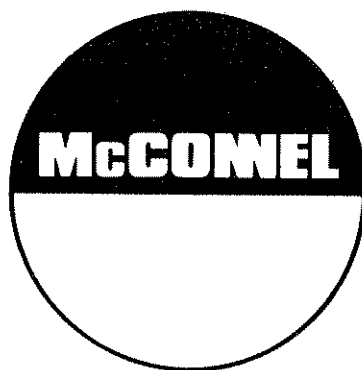


McDONNELL





Ref.	Part No.	Qty.	Description
DRIVE INSTALLATION			
1	19 89 053	1	Chain incl. connecting link
2	19 89 057	1	Hydraulic motor incl key
3	19 89 051	1	Drive sprocket 15 tooth
4	19 89 062	1	Retaining washer
5	93 13 054	6	Setscrew M8 x 25
6	91 00 204	5	Spring washer dia 8
7	93 13 076	2	Setscrew M12 x 35
8	91 00 106	2	Plain washer dia 12
9	91 43 006	2	Self locking nut M12
10	85 33 124	2	Hose 1/2" BSP SF-90 deg F x 29 1/2" long
11	85 81 215	1	Swivel elbow 1/2 BSP F-M
12	19 89 060	1	Regulator valve
13	85 81 296	1	Tee 1/2 BSP F-M-M
14	85 33 024	2	Hose 1/2 BSP SF-90 deg F x 48" long
15	19 89 061	1	Check valve
16	85 81 110	5	Union 1/2" BSP MM
17	86 50 104	4	Bonded seal 1/2" BSP
18	85 81 130	1	Adaptor 3/4 BSP 1/2" BSP MM
19	86 50 106	1	Bonded seal 3/4 BSP
20	19 89 269	1	Roller
21	19 89 087	1	Key - drive end
22	19 89 054	2	Flanged bearing
23	92 93 054	8	Bolt - cup square M8 x 25
24	91 00 104	10	Plain washer dia 8
25	91 43 004	10	Self locking nut M8
26	19 89 266	1	Cam - R Hand
27	19 89 281	1	Cam L Hand
28	19 89 058	2	Cam roller
29	19 89 040	2	Cam roller bracket
30	19 89 082	1	Roller sealing plate R. Hand
31	19 89 081	1	Roller sealing plate L.Hand
32	93 13 043	6	Setscrew M6 x 20
33	91 00 103	6	Plain washer dia 6
34	91 43 003	6	Self locking nut M6
35	04 01 212	2	External circlip dia 12
36	19 89 032	1	Sprocket 38 tooth
37	04 01 225	3	External circlip dia 25
38	19 89 265	1	Brush shaft
39	19 89 083	1	Key
40	04 01 218	1	External circlip dia 18
41	19 89 037	1	Brush including clips
42	19 89 012	1	Mounting plate R. Hand
43	19 89 013	1	Mounting plate L.Hand
44	19 89 055	2	Flanged bearing
45	93 13 124	2	Adjuster screw M8 60
46	91 13 004	9	Plain nut M8
47	19 89 036	1	Sprocket 9 tooth
48	19 89 090	1	Bearing top hat
49	19 89 095	1	Support plate
50	92 00 018	4	Setscrew button head M8 x 20
51	19 89 034	1	Sprocket 15 tooth
52	19 89 056	2	Bearing
53	19 89 046	1	Tensioner washer
54	91 43 007	1	Self locking nut M 16
55	19 89 093	1	Idler shaft
56	19 89 096	1	Bearing
57	19 89 094	1	Sprocket - 12 tooth
58	04 01 112	1	External circlip 3/4" dia
59	19 89 085	1	Key - free end



F. W. McConnel Limited, Temeside Works, Ludlow, Shropshire, SY8 1JL, England.
Telephone: (0584) 873131. Telex 35313. Facsimile: (0584) 876463.