

OPERATION MANUAL AND
SPARE PARTS LIST
FOR

TS 20

F.W. McCONNEL LTD.
TEMESIDE WORKS,
LUDLOW, SHROPSHIRE. SY8 1JL
TEL. LUDLOW (0584) 2345.

ADDENDUM TO OPERATION MANUAL AND SPARE PARTS LIST FOR TS.20

The following items are to be noted whenever reference is made to the above mentioned publication.

(1) REFER TO FITTING INSTRUCTIONS

Preparation of Tractor (a) Hydraulic Pump must be giving 2000 p.s.i. minimum

(2) REFER TO TABLE 2

Cross Beam Type "A" = Part Number 10 71 112

Cross Beam Type "B" = Part Number 10 71 162

Top Link 10 71 131 Measurements should read

A	B	C
9 $\frac{1}{8}$ "	12 $\frac{5}{8}$ "	1"

(3) REFER TO TABLE 3

JOHN DEERE Hydraulic Coupling 85 90 053

(4) REFER TO SPARE PARTS LIST

No Drag Link Bushes are illustrated or numbered

Should read 4 off 10 60 808

(5) Piston Seal Pressure Cup 86 12 130

Should read 86 12 129

(6) LUBRICATION

The greasers in the inner mast rollers are not being fitted in machines after Serial Number OOT 101.

Lubricate daily with an oil can via the holes vacated by the greasers.

AT ALL TIMES THE INSTRUCTIONS GIVEN IN THIS MANUAL MUST BE STRICTLY ADHERED TO. CORRECTLY MAINTAINED AND OPERATED THIS MACHINE WILL RESPOND TO ALL REASONABLE DEMANDS MADE UPON IT AND GIVE YEARS OF RELIABLE SERVICE.

1. SAFETY

- a) Check wheel spacing on tractor is adequate and in line with recommendation and that adequate front weights are fitted to the tractor (see table 1).
- b) During transportation of loads have forks set at minimum height possible.
- c) Never stand under loaded forks or behind Tail Slave.
- d) Check for frayed or kinked hoses. If serious replace hoses. If very slight abrasion, prevent further fraying by protecting with insulation tape etc. or by slightly re-routing.
- e) Lubricate lifting chains regularly for safety and long life.

NOTE : The following tractors are not suitable for use with TS. 20 Fork Lift.
John Deere Vineyard. Ferguson TE 20. Ferguson Vineyard.

TABLE 1 TRACTOR WEIGHTS AND WHEEL SETTING			
Tractor	Front weight at 24" load centres	Front wheel weight	Rear wheel spacing min.
Ferguson 35	1,056 lbs	94 lbs	60"
65	525 lbs	94 lbs	60"
135	1,056 lbs plus	94 lbs	60"
165	525 lbs		60"
175	525 lbs		60"
Ford Dexta			
Super Major	300 lbs	70 lbs	60"
2000		plus	
3000			
4000	400 lbs	180 lbs	60"
5000	240 lbs	90 lbs	60"
David Brown 880	850 lbs (386 kilo)		60" (152.4cm)
990	650 lbs (295 kilo)		60"
1200	650 lbs (295 kilo)		60"
Nuffield 342			
460			
10/42			
10/60			
3/45	700 lbs	100 lbs	60"
4/65	700 lbs plus	100 lbs	60"
Leyland 1384			
344			
154			
International 275			
414			
434			
450	400 lbs plus	90 lbs	60"
614			
John Deere 2020			

2. FITTING INSTRUCTIONS

Preparation of Tractor.

- a. Tractor must have a hydraulic pump in good condition giving 2,000 psi.
- b. Tractor must have a trailer pipe.
- c. Wheel ballast is strongly recommended.
- d. Check fitting (Table 1) and set wheels to correct spacing, also fit front body weights - these can be obtained from your dealer. NOTE: Alternative or part front weighting can be achieved by using cantilever weights of front end loader, front pallet carriers, front tool boxes etc. but the total front weighting must be adequate.
- e. Remove tractor lower linkage arms, replace with the linkage frame supplied. Connect tractor lift rods to the lugs on the cross beam of the linkage frame. Adjust lift rods equally until the attachment pins on the linkage frame are approx. $14\frac{1}{2}$ " above ground level. (See Diagram 1).
- f. Remove tractor top link, replace with special link provided, having first adjusted the link so that hole centres are in accordance with the dimensions given in (Table 3) for the appropriate tractor.

- g. Check tractor hydraulic system and replace selector valve if necessary. See para.k.

Fitting Tail Slave to Tractor

- h. Extend the jack-legs on the Tail-Slave until the centres of the linkage attachment slots are approximately $16\frac{3}{4}$ " above ground level. (See Diagram 1).
- i. Reverse tractor until the linkage pins contact the vertical face of the attachment plates. Raise linkage frame sufficiently to engage the attachment pins into the slots. The retaining catches should automatically engage, locking the linkage pins when the frame is raised. To check this point, the trip rod should have disengaged from the angle stop on both sides. Should the trip rods not have disengaged check that the linkage pins have seated into the slots of the attachment plates, and press the trip rod downwards clear of the stops. (See Diagram 1).
- j. Fit the special top link into the appropriate holes in the vertical flat members of the Ton Slave Assembly. Use the pin provided. (See Table 3) for recommended hole positions relative to tractor type).

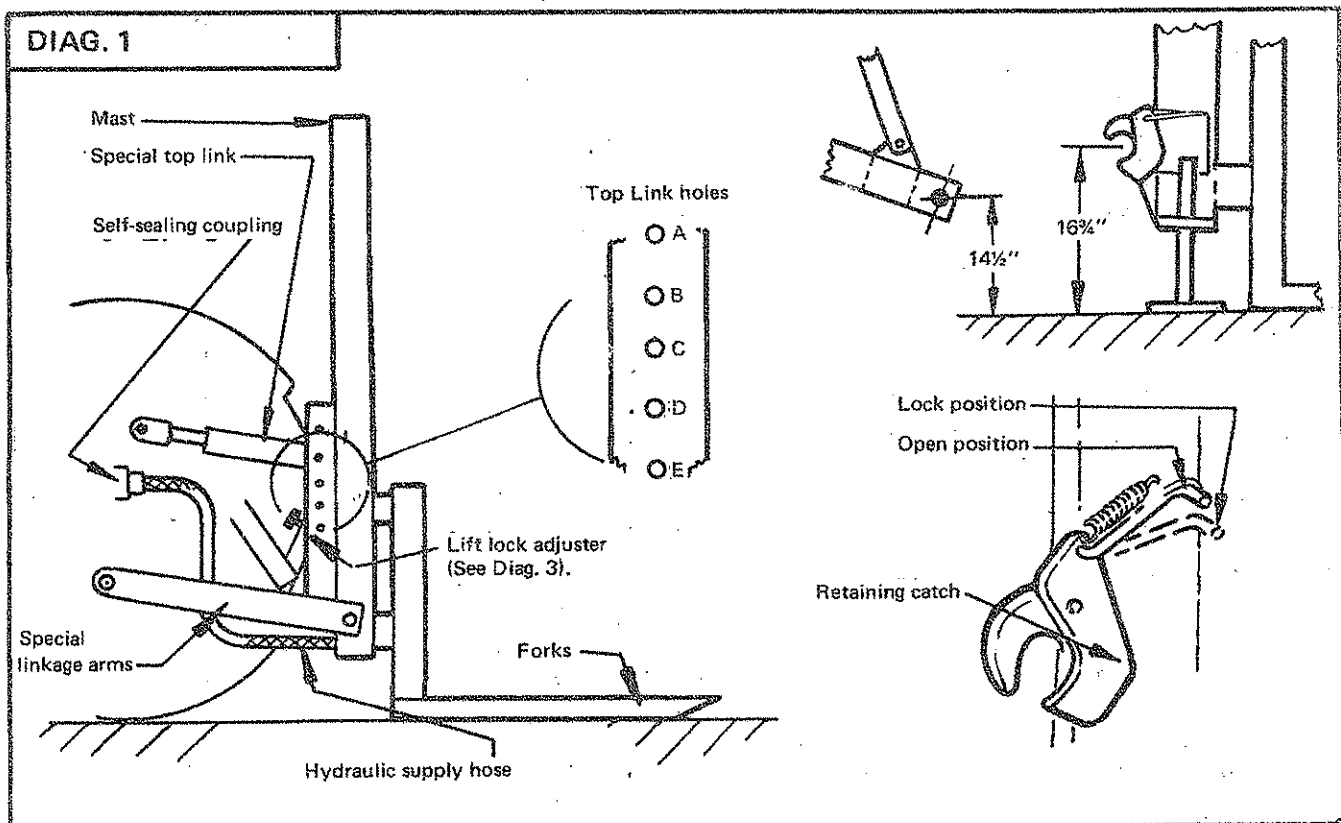
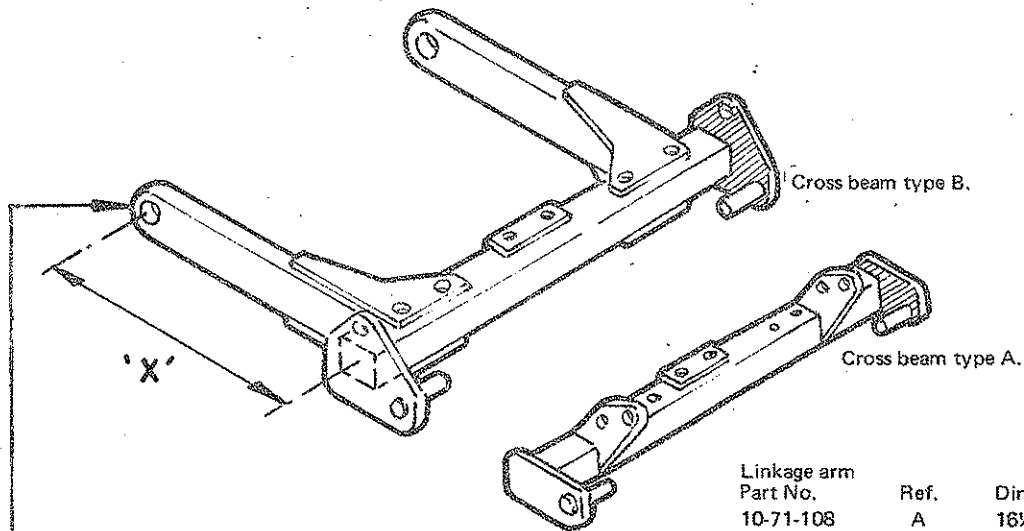


TABLE 2. Read in conjunction with Table 3.

LINKAGE ARMS & CROSS BEAM



Linkage arm Part No.	Ref.	Dim. X
10-71-108	A	18½"
10-71-160	B	18½"
10-71-171	C	16½"
10-71-174	D	17"
10-71-176	E	12½"
10-71-178	F	18½"
10-71-186	G	16½"

Linkage Arm Ref. 'D' used on John Deere only.

TOP LINKS

Part No.	Ref.	Tractor	A	B	C	Part No.	Ref.	Tractor	A	B	C
					dia.						dia.
10-71-123	A	Ford 4000 5000 Nuff. 342 460 10/42 10/60 3/45 Int. B. 275 B. 450 B. 614 John Deere 2020	12¾"	15¾"	1"	10-71-136	C	Ferguson 35. 65. 135. 165. 175. 178. Ford Dexta 2000 3000	13"	16"	¾"
10-71-131	B	Ford Major Sup. Major DB. Sel. Nuffield 465 Int. B. 523	13"	16"	1"						
10-71-179	D	DB IMP.	20½"	23"	¾"	10-71-183	E	Inter. B. 414 B. 434	11¾"	14"	¾"

TABLE 3. TRACTOR FITTING TABLE. STD and OS TYRES

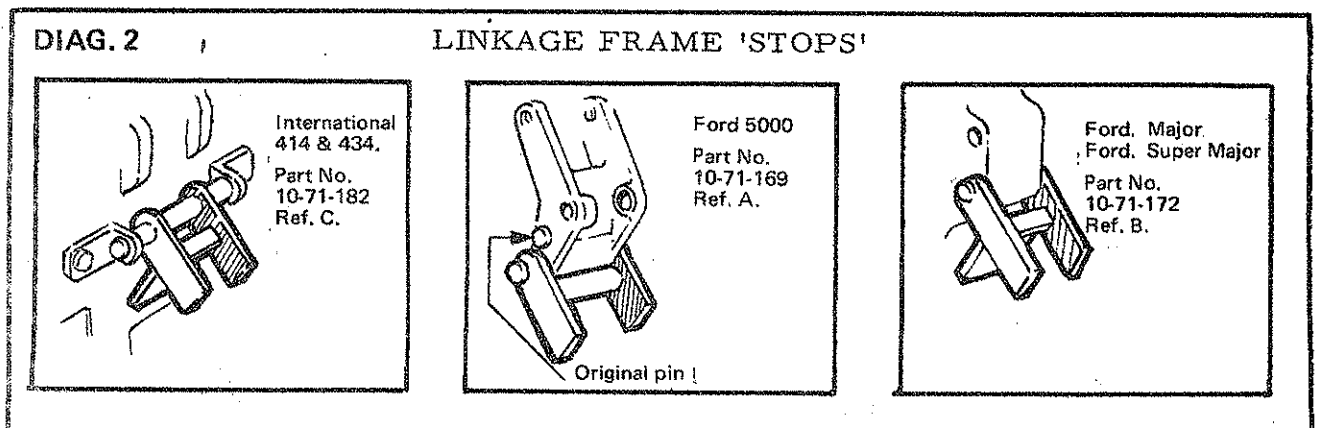
Tractor Types	Cross Beam		Linkage Arm		Top Link		Linkage Step		Hydraulic		Field Setting		Remarks
	Part No.	Ref.	Part No.	Ref.	Part No.	Ref.	Part No.	Ref.	Coupling	Link	Top Hole	Pos.	
Ferguson 35	10-71-112	A	10-71-171	C	10-71-136	C			85-90-043	C	14.7/8"	E	
65	10-71-112	A	10-71-108	A	10-71-136	C			85-90-043	C	15.7/8"	D	
135	10-71-112	A	10-71-171	C	10-71-136	C			85-90-043	C	14.7/8"	E	
165	10-71-112	A	10-71-108	A	10-71-136	C			85-90-043	C	15.7/8"	D	
175	10-71-112	A	10-71-108	A	10-71-136	C			85-90-043	C	15.1/4"	C	
178	10-71-112	A	10-71-108	A	10-71-136	C			85-90-043	C			
Fordson Dexta	10-71-112	A	10-71-171	C	10-71-136*	C			85-90-023				* c/w pin 11-51-810 & Spring Cotter
Major	10-71-162	B	10-71-108	A	10-71-131	B	10-71-172*	B	85-90-023	B	11.1/2"	E	* c/w pin 11-51-802 & Spring Cotter
Super Major	10-71-112	A	10-71-108	A	10-71-131	B	10-71-172*	B	85-90-023	B	10"	D	* c/w pin 11-51-802 & Spring Cotter
2000	10-71-112	A	10-71-171	C	10-71-136*	C			85-90-023				* c/w pin 11-51-810 & Spring Cotter
3000	10-71-112	A	10-71-171	C	10-71-136*	C			85-90-023				* c/w pin 11-51-810 & Spring Cotter
4000	10-71-112	A	10-71-108	A	10-71-123	A	10-71-169*	A	85-90-023	A	13"	C	* c/w pin 11-51-810 & Spring Cotter
5000	10-71-112	A	10-71-160	B	10-71-123	A			85-90-023				* c/w pin 11-51-802 & Spring Cotter
David Brown 850 Imp	10-71-112	A	10-71-186	G	10-71-179	D			85-90-043				
880 Imp	10-71-112	A	10-71-186	G	10-71-179	D			85-90-043				
950 Imp	10-71-112	A	10-71-178	F	10-71-179	D			85-90-043	D	22.3/4"	C	
990 Imp	10-71-112	A	10-71-178	F	10-71-179	D			85-90-043	D	22.3/4"	C	
770 Sel.													
880 Sel	10-71-112	A	10-71-186	G	10-71-131	B			85-90-043				
990 Sel	10-71-112	A	10-71-178	F	10-71-131	B			85-90-043				
1200 Sel	10-71-112	A	10-71-178	F	10-71-131	B			85-90-043				
Nuffield 342													
460	10-71-162	B	10-71-160	B	10-71-123	A			85-90-023				
10/42	10-71-162	B	10-71-150	B	10-71-123	A			85-90-023				
10/60	10-71-162	B	10-71-160	B	10-71-123	A			85-90-023	A	14"	D	
3/45	10-71-162	B	10-71-160	B	10-71-123	A			85-90-023				
4/65	10-71-162	B	10-71-160	B	10-71-131	B			85-90-023	B	12.5/8"	C	
Leyland 384													
344													
154													
Nuffield 460	10-71-162	B	10-71-160	B	10-71-123	A			85-90-023				
10/42	10-71-162	B	10-71-150	B	10-71-123	A			85-90-023				
10/60	10-71-162	B	10-71-160	B	10-71-123	A			85-90-023	A	14"	D	
3/45	10-71-162	B	10-71-160	B	10-71-123	A			85-90-023				
4/65	10-71-162	B	10-71-160	B	10-71-131	B			85-90-023	B	12.5/8"	C	
Leyland 384													
344													
154													
Nuffield 460	10-71-162	B	10-71-160	B	10-71-123	A			85-90-023				
10/42	10-71-162	B	10-71-150	B	10-71-123	A			85-90-023				
10/60	10-71-162	B	10-71-160	B	10-71-123	A			85-90-023	A	14"	D	
3/45	10-71-162	B	10-71-160	B	10-71-123	A			85-90-023				
4/65	10-71-162	B	10-71-160	B	10-71-131	B			85-90-023	B	12.5/8"	C	
Leyland 384													
344													
154													
Nuffield 460	10-71-162	B	10-71-160	B	10-71-123	A			85-90-023				
10/42	10-71-162	B	10-71-150	B	10-71-123	A			85-90-023				
10/60	10-71-162	B	10-71-160	B	10-71-123	A			85-90-023	A	14"	D	
3/45	10-71-162	B	10-71-160	B	10-71-123	A			85-90-023				
4/65	10-71-162	B	10-71-160	B	10-71-131	B			85-90-023	B	12.5/8"	C	
Leyland 384													
344													
154													
Nuffield 460	10-71-162	B	10-71-160	B	10-71-123	A			85-90-023				
10/42	10-71-162	B	10-71-150	B	10-71-123	A			85-90-023				
10/60	10-71-162	B	10-71-160	B	10-71-123	A			85-90-023	A	14"	D	
3/45	10-71-162	B	10-71-160	B	10-71-123	A			85-90-023				
4/65	10-71-162	B	10-71-160	B	10-71-131	B			85-90-023	B	12.5/8"	C	
Leyland 384													
344													
154													
Nuffield 460	10-71-162	B	10-71-160	B	10-71-123	A			85-90-023				
10/42	10-71-162	B	10-71-150	B	10-71-123	A			85-90-023				
10/60	10-71-162	B	10-71-160	B	10-71-123	A			85-90-023	A	14"	D	
3/45	10-71-162	B	10-71-160	B	10-71-123	A			85-90-023				
4/65	10-71-162	B	10-71-160	B	10-71-131	B			85-90-023	B	12.5/8"	C	
Leyland 384													
344													
154													
Nuffield 460	10-71-162	B	10-71-160	B	10-71-123	A			85-90-023				
10/42	10-71-162	B	10-71-150	B	10-71-123	A			85-90-023				
10/60	10-71-162	B	10-71-160	B	10-71-123	A			85-90-023	A	14"	D	
3/45	10-71-162	B	10-71-160	B	10-71-123	A			85-90-023				
4/65	10-71-162	B	10-71-160	B	10-71-131	B			85-90-023	B	12.5/8"	C	
Leyland 384													
344													
154													
Nuffield 460	10-71-162	B	10-71-160	B	10-71-123	A			85-90-023				
10/42	10-71-162	B	10-71-150	B	10-71-123	A			85-90-023				
10/60	10-71-162	B	10-71-160	B	10-71-123	A			85-90-023	A	14"	D	
3/45	10-71-162	B	10-71-160	B	10-71-123	A			85-90-023				
4/65	10-71-162	B	10-71-160	B	10-71-131	B			85-90-023	B	12.5/8"	C	
Leyland 384													
344													
154													
Nuffield 460	10-71-162	B	10-71-160	B	10-71-123	A			85-90-023				
10/42	10-71-162	B	10-71-150	B	10-71-123	A			85-90-023				
10/60	10-71-162	B	10-71-160	B	10-71-123	A			85-90-023	A	14"	D	
3/45	10-71-162	B	10-71-160	B	10-71-123	A			85-90-023				
4/65	10-71-162	B	10-71-160	B	10-71-131	B			85-90-023	B	12.5/8"	C	
Leyland 384													
344													
154													
Nuffield 460	10-71-162	B	10-71-160	B	10-71-123	A			85-90-023				
10/42	10-71-162	B	10-71-150	B	10-71-123	A			85-90-023				
10/60	10-71-162	B	10-71-160	B	10-71-123	A			85-90-023	A	14"	D	
3/45	10-71-162	B	10-71-160	B	10-71-123	A			85-90-023				
4/65	10-71-162	B	10-71-160	B	10-71-131	B			85-90-023	B	12.5/8"	C	
Leyland 384													
344													
154													
Nuffield 460	10-71-162	B	10-71-160	B	10-71-123	A			85-90-023				
10/42	10-71-162	B	10-71-150	B	10-71-123	A			85-90-023				
10/60	10-71-162	B	1										

EXTREMELY IMPORTANT

GREAT CARE MUST BE TAKEN TO CARRY OUT INSTRUCTIONS f. AND j. CORRECTLY. IF THE WRONG HOLES ARE SELECTED OR THE WRONG TOP LINK IS FITTED SEVERE DAMAGE COULD BE CAUSED TO THE TAIL SLAVE WHEN OPERATED.

- k. Couple the hydraulic hose by means of the self sealing coupling to the tractor hydraulics. The hydraulic point on the tractor to which the ram hose is connected must also supply oil to the ram when the linkage arms are operated, in order for the mechanical lift lock to operate satisfactorily. Certain Ford tractor models fitted with a two position hydraulic selector will have to be modified and fitted with a three position hydraulic selector to allow for the above condition. On certain other tractors it will be necessary to restrict the linkage frame lift when in the fully raised position to allow oil to feed the Ton Slave ram. A 'stop' bracket is provided for this purpose (See Table 3). This bracket should be located as shown in Diagram 2, so that it abuts against the linkage frame cross beam when frame is raised.
- l. The mechanical lift lock is fitted in order to lock the linkage arms in the partly raised position when the inner mast and forks are lowered, this is to ensure adequate ground clearance when transporting. Raise the jack legs and lock into position by means of the screwed lever. Lower the linkage frame. Remove the locking pin 'A' (Diagram

- 3) and locate same into hole position 'C' to prevent loss. Reference to the refitting of this pin will be mentioned later. See Notes 'P' and 'S'.
- m. Position tractor control lever into the 'raise' position, the linkage arms will lift followed by the inner mast and forks. Allow inner mast to extend vertically two or three feet then hold. It will be observed that the masts are now tilted back toward the tractor, allowing a load to be transported safely.
- n. Position the tractor control lever into the 'lower' position. The mechanical lock should allow the linkage to lower until the masts are approximately vertical and then hold the linkage in position. The linkage should remain locked until the inner mast lowers sufficiently to operate the release catch allowing the mechanical lock to trip (See Diagram 3).
- o. When lowering the linkage, should the mechanical lock fail to hold, unscrew the adjustment screw 'D' (Diagram 3), one turn and then lock by means of the lock nut. The operation of raising the linkage and inner mast extension two or three feet should be repeated and the lock adjusted one turn at a time until it holds. It may be necessary to readjust the screw again slightly when the inner mast is lowered under load, the lock however should operate satisfactorily under both loaded and unloaded conditions once the adjustment has been correctly set. Make certain that adjusting screw lock nut is firmly locked when the exact setting has been made.



3. REMOVING FROM TRACTOR

- p. To remove the Tail-Slave from the tractor lower the inner mast and forks to ground level. Remove pin 'A' (Diagram 3), from hole position 'C' and replace in hole position 'E'. This is very important otherwise difficulty will be experienced in re-coupling to tractor.
- q. Lower jack-legs to ground level and lock. Unscrew hydraulic supply pipe. Release the retaining catches locking the linkage pins by locating the trip rods into the angle stops on both sides of the mast. See Diagram 1.
- r. Lower the linkage frame clear of the slots and detach top link from the Tail-Slave. The tractor can now be driven clear.
- s. If pin 'A' was not positioned into the hole 'E' prior to releasing the Tail-Slave from the tractor the following instructions must be observed. Slacken off the two eyebolts locating the tension springs. Remove the springs from their location over the pins on the swivel plate 'B' (Diagram 3). With the springs released the locking pin can then be located and the springs replaced and tensioned.

4. LUBRICATION

There are eleven greasing points on the Tail-Slave. Five on the lift lock assembly, one in each of the tilt brackets and

one in each of the inner mast rollers. Grease these weekly.

Oil the outer mast rollers regularly and keep the lifting chain well greased.

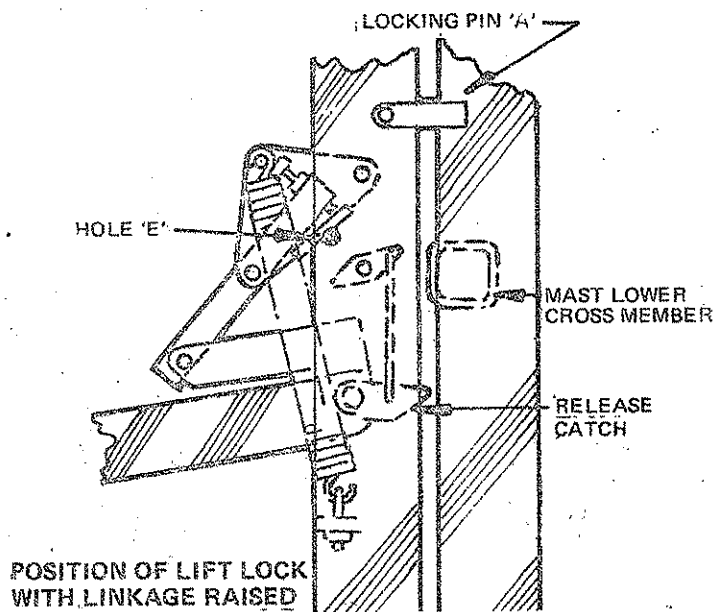
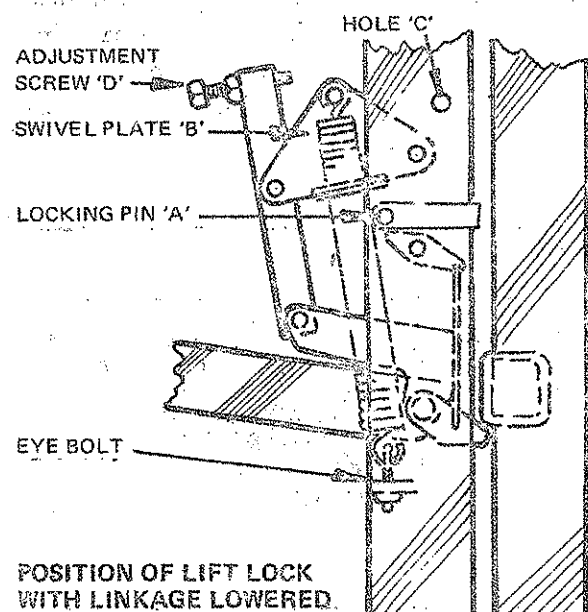
When storing the Tail Slave grease all moving parts and the exposed ram inner rod particularly where the rod passes through the seal.

5. FORK TILT ADJUSTMENT

The automatic tilt mechanism has been set to tilt the forks downwards when not loaded. This condition facilitates the entering of the forks into their pallet. The forks are held in a downward position by means of a compression spring located in the tubular sleeve on each side of the carriage. Upon lifting a loaded pallet the force required to lift the load overcomes the resistance in the springs thus tilting the forks upwards. To adjust the tilt mechanism in order to remove downward tilt, screw plunger tube adjustment nut, in anti-clockwise direction to reduce the spring pressure until the forks are in the required position. This adjustment should be carried out with the forks empty, or carrying an unloaded pallet.

In order to adjust the tilt mechanism to give downward tilt, screw plunger tube adjusting nut in a clockwise direction to increase the spring pressure. This adjustment should again be carried out either with the forks unloaded or carrying an empty pallet as required.

DIAG. 3 LIFT LOCK ADJUSTMENT

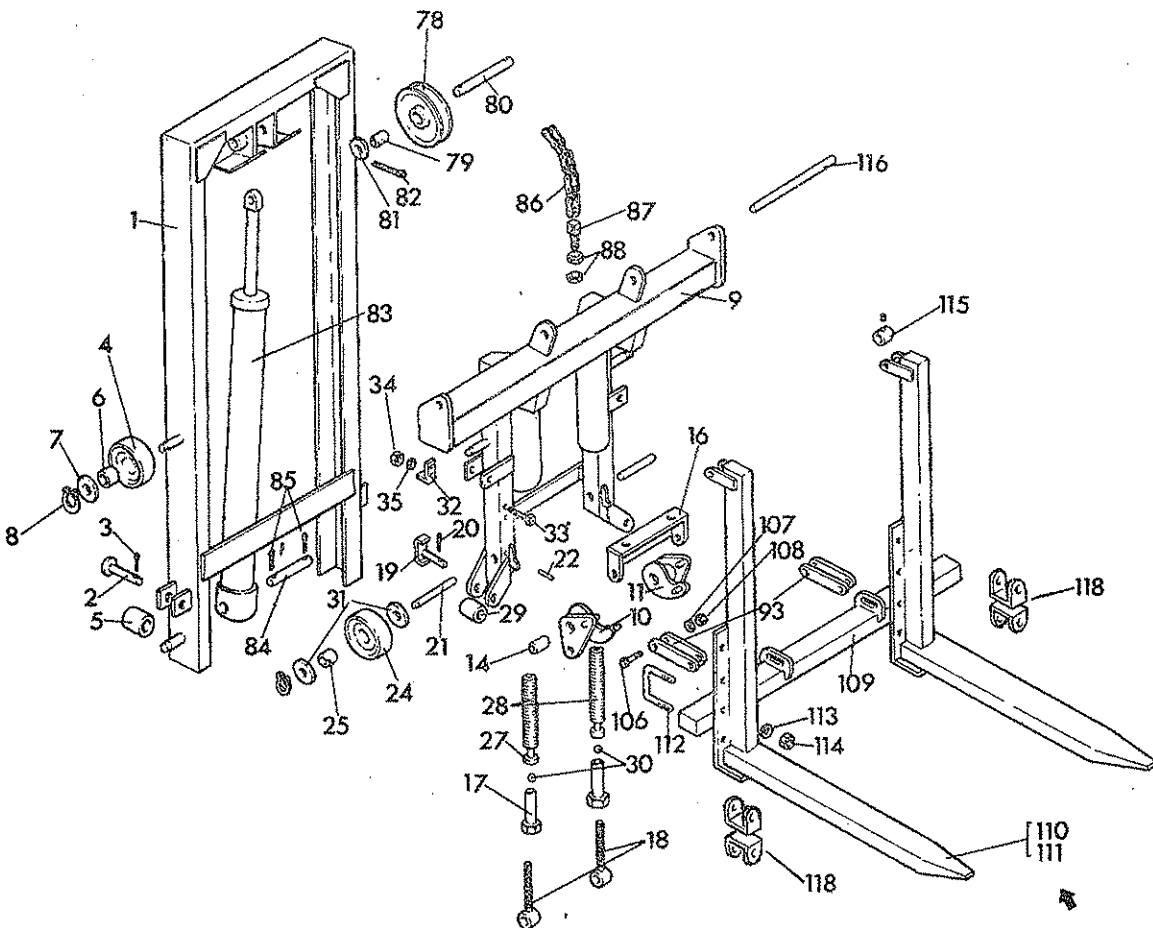
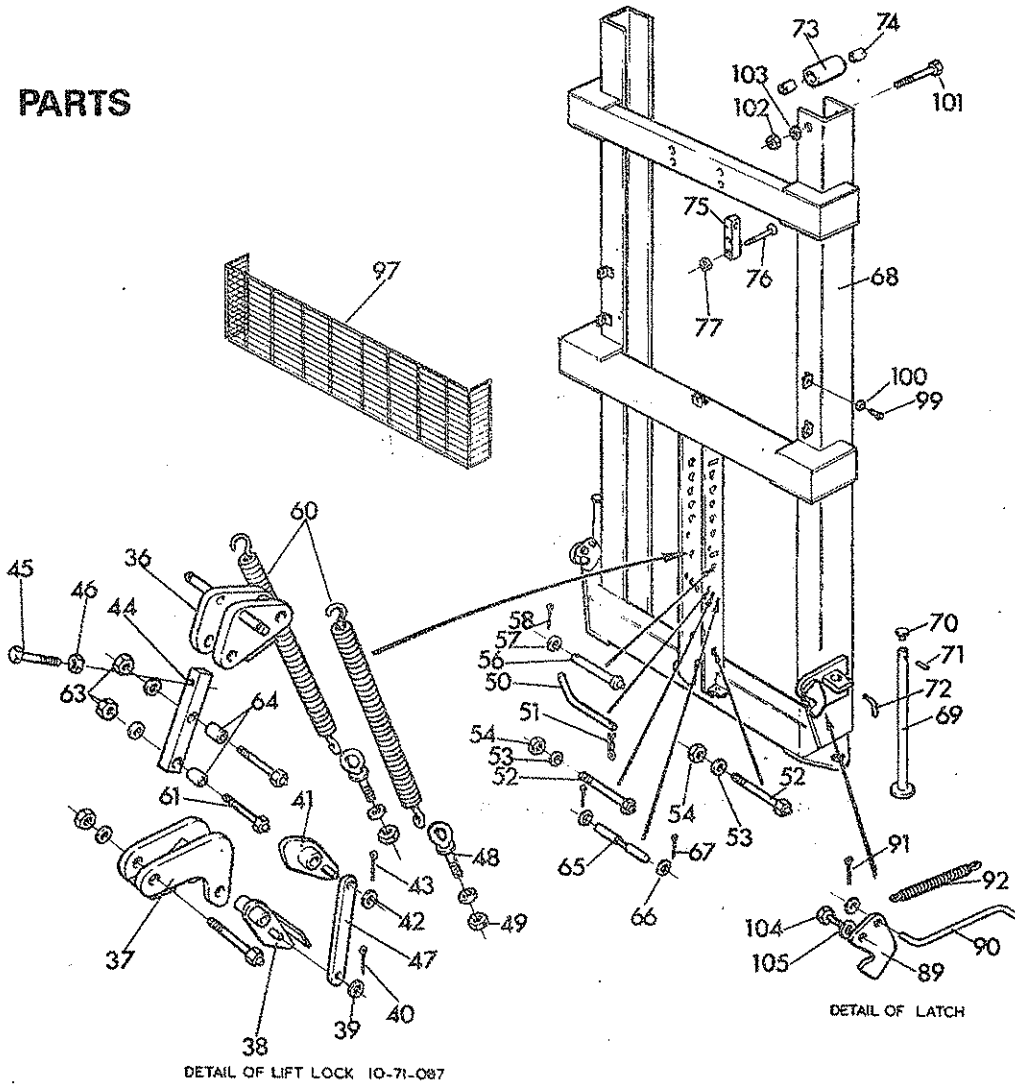


TS 20

SPARE PARTS

Always order from your dealer or stockist
quoting correct part number and quantity required.

SPARE PARTS



PARTS LIST (For Tractor Fittings See Table 3).

Ref. No.	Part No.	No. Off	Description	Ref. No.	Part No.	No. Off	Description
	10-71-026	1	INNER MAST ASSEMBLY		10-71-087	1	ASSEMBLY OF LIFT LOCK
1	10-71-027	1	. Inner Mast W/A	36	10-71-088	1	. Linkage Locking Bracket W/A
2	10-71-040	2	. Locating Pin c/w Splitpins	37	10-71-092	1	. Linkage Stop Bracket W/A
3	05-03-123	2	.. 1 1/2" x 1/8" Split-pin	38	10-71-101	1	. Catch c/w Washers & Splitpins
4	10-60-020	4	. Roller				
5	10-71-043	2	. Side Roller c/w Bushes	39	01-00-101	1	.. 1/4" Washer
6	10-71-800	4	.. Bush	40	05-03-063	1	.. 3/4" x 1/8" Splitpin
7	01-00-109	4	. 1" Washer	41	10-71-097	1	. Swivel Block c/w Washer & Splitpin
8	04-11-116	4	. Truarc Retainer	42	01-00-101	1	.. 1/4" Washer
	10-71-045	1	CARRIAGE ASSEMBLY	43	05-03-063	1	.. 3/4" x 1/8" Splitpin
9	10-71-046	1	. Carriage W/A	44	10-71-095	1	. Linkage Strut c/w Screws
10	10-71-059	1	. Tilt Bracket, L.H. W/A	45	03-13-205	1	. 2 1/2" x 1/2" BSF Set-screw
11	10-71-060	1	. Tilt Bracket, R.H. W/A	46	01-33-005	1	.. 1/2" BSF Locknut
*12	01-00-106	4	.. 5/8" Washer	47	10-71-104	1	. Connecting Rod
*13	05-03-083	4	.. 1" x 1/8" Splitpin	48	10-71-106	2	. Eyebolt c/w Nuts
14	10-71-801	2	.. Bearing Bush	49	01-43-003	2	.. 3/8" BSF Aeronut
*15	09-01-141	2	.. 1/4" DF Greaser	50	10-71-107	1	. Linkage Locking Pin
16	10-71-064	1	. Chain Connector W/A	51	04-31-105	1	.. 5/32" Spring Cotter
17	10-71-056	2	. Plunger Tube W/A	52	10-71-122	2	. Pivot Bolt c/w Nut & Greaser
18	10-60-035	2	. Plunger Rod W/A	53	01-00-105	2	.. 1/2" Washer
19	10-60-038	4	. Side Roller Pin c/w Splitpins	54	01-43-005	2	.. 1/2" BSF Aeronut
20	05-03-083	4	. 1" x 1/8" Splitpin	*55	09-01-141	2	.. 1/4" DF Greaser
21	10-71-058	2	. Tilt Bracket Shaft, complete	56	10-71-154	1	. Pivot Pin c/w Greaser
22	05-06-186	2	.. 2 1/4" x 1/4" Grooved Pin	57	01-00-107	1	.. 3/4" Washer
*23	05-03-125	4	.. 1 1/2" x 3/16" Split-pin	58	05-03-124	1	.. 1 1/2" x 5/32" Split-pin
24	10-60-020	4	. Carriage Roller	*59	09-01-141	1	.. 1/4" DF Greaser
25	10-60-806	4	.. Bearing Bush, 1 1/4" long	60	11-51-082	2	. Return Spring
*26	09-01-141	4	.. 1/4" DF Greaser	61	11-51-086	2	. Special Bolt c/w Nut & Greaser
27	10-60-022	2	. Spring Plunger	*62	09-01-141	2	.. 1/4" DF Greaser
28	10-60-021	2	. Tilt Spring	63	01-43-005	2	.. 1/2" BSF Aeronut
29	10-60-039	4	. Side Roller	64	10-71-096	2	. Strut Bush
30	09-05-120	2	. 5/8" dia. Steel Ball	65	10-71-158	1	. Swivel Block Stop Pin
31	01-00-109	8	. 1" Washer	66	01-00-105	2	.. 1/2" Washer
32	10-71-159	2	. Carriage Stop c/w Bolts	67	05-03-082	2	.. 1" x 3/32" Split-pin
33	02-13-243	4	.. 3" x 3/8" BSF Bolt		*(10-71-152	1	HYDRAULIC HOSE ASSEMBLY
34	01-43-003	4	.. 3/8" BSF Aeronut		(
35	01-00-103	4	.. 3/8" Washer		*(85-01-005	1	. 4'0" Hydraulic Hose
					(

Ref. No.	Part No.	No. Off.	Description	Ref. No.	Part No.	No. Off.	Description
*	(11-51-755	1	. 3/8" BSP Banjo Bolt	92	10-71-080	2	. Latch Spring
*	(85-90-023	1*	. Self Sealing Coupling, Female	93	10-71-070	4	. Drag Link
*	(01-70-003	2	. 3/8" BSP Copper Washer	*94	10-71-134	1	. Top Link Attachment Pin
			*If Exactor Coupling is required Part No. is 85-90-043	*95	04-31-217	1	.. Lynch Pin
	10-71-802	1	OUTER MAIN FRAME ASSEMBLY	*96	11-51-099	4	. Bearing
68	10-71-002	1	. Outer Frame W/A	97	10-71-086	1	. Wire Mesh Guard
69	10-71-081	2	. Jack Assembly	*98	10-71-170	2	. Catch Bush
70	10-71-083	2	.. Jack Top	99	03-13-061	5	. 3/4" x 1/4" BSF Set-screw
71	05-01-113	2	.. 1.3/8" x 1/8" Grooved Pin	100	01-00-101	5	. 1/4" Washer
72	10-60-014	2	. Jack Clamp Screw	101	02-13-406	2	. 5" x 5/8" BSF Bolt
73	10-71-067	2	. Outer Mast Side Roller	102	01-43-006	2	. 5/8" BSF Aeronut
74	10-71-800	4	.. Bush	103	01-00-106	2	. 5/8" Washer
75	10-71-084	2	. Chain End Fitting	104	03-13-125	2	. 1 1/2" x 1/2" BSF Set-screw
76	02-53-203	4	. 2 1/2" x 3/8" Socket Head Csk Bolt	105	01-00-105	2	. 1/2" BSF Washer
77	01-43-003	4	. 3/8" Aeronut	106	03-13-105	4	. 1 1/4" x 1/2" BSF Set-screw
78	10-60-010	2	. Chain Pulley c/w Bushes	107	01-00-105	4	. 1/2" Washer
79	10-60-804	2	.. Bush 1 3/4" long	108	01-43-005	4	. 1/2" BSF Aeronut
80	10-71-069	1	. Ram Shaft	109	10-60-004	1	BOTTOM TILT TUBE
81	01-00-109	4	.. 1" Washer		10-71-804	1	FORK ASSEMBLY 42"
82	05-03-125	2	.. 1 1/2" x 3/16" Split pin	110	10-71-144	1	. 42" Fork, W/A
83	10-71-803	1	. Ram Cylinder	10-71-805	1	FORK ASSEMBLY 36"	
*	(86-12-130	1	.. Piston Seal - Pressure Cup	111	10-71-148	1	. 36" Fork, W/A
*	(86-40-417	1	.. Wiper Seal				The following parts are common to both Forks
*	(86-00-112	1	.. 'O' Ring	112	10-60-016	2	. 'U' Bolt c/w Washers and Nuts
84	10-71-068	1	. Ram Locating Pin c/w Splitpins	113	01-00-105	4	.. 1/2" Flat Washer
85	05-03-103	2	.. 1 1/4" x 1/8" Split-pin	114	01-43-005	4	.. 1/2" BSF Aeronut
86	10-71-806	2	. Balance Chain c/w End Link	115	11-57-023	2	. Locating Collar c/w Setscrew
87	10-60-803	2	.. End Link c/w Nuts	116	11-57-024	2	. Fork Pivot Shaft c/w Splitpins
88	01-34-006	4	... 5/8" Whit. Locknut	*117	05-03-165	4	.. 2" x 3/16" Split-pins
89	10-71-071	2	. Lower Linkage Catch	118	10-60-130	4	. Fork Retaining 'U'
90	10-71-077	2	. Latch Arm c/w Splitpin				Always order from your Dealer quoting the correct Part No.
91	05-03-053	4	.. 5/8" x 1/8" Split-pin				* Not illustrated



McConnel Limited, Temeside Works, Ludlow, Shropshire SY8 1JL. England.
Telephone: 01584 873131. Facsimile: 01584 876463. www.mcconnel.com