

PUBLICATION 71  
February 1976

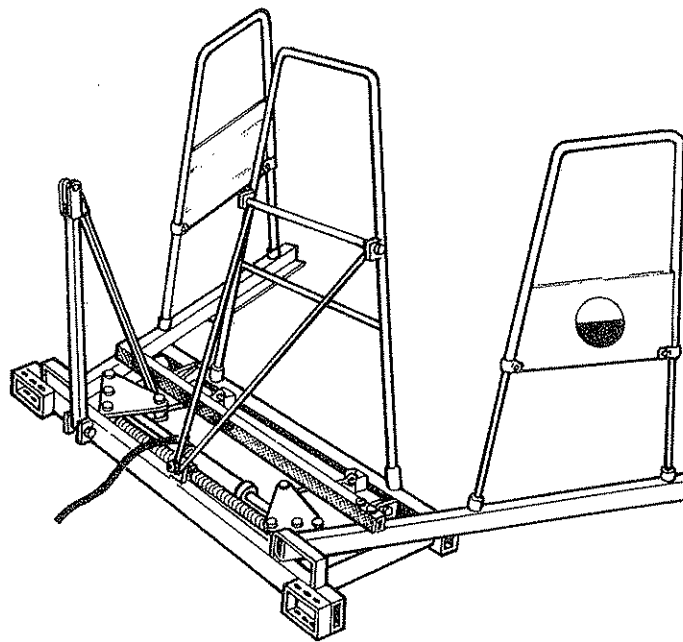
PART NO  
11 51 849

Amended Jan 1978

# INSTRUCTION AND SPARE PARTS MANUAL

# BALE

# SLAVE



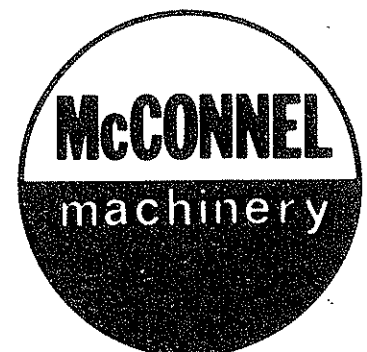
## CONTENTS

Introduction		Page 1
Section 1	Safety Precaution	Page 2
Section 2	Fitting	Page 3
Section 3	Operation	Page 14
Section 4	Maintenance	Page 15
Spare Parts		Page 16

**FW McConnel Ltd**

*agricultural and industrial machinery*

Registered office: Temeside Works  
Ludlow, Shropshire, SY8 1JL  
England  
*registered number 305192 England*  
*telephone: Ludlow 3131 (std 0584)*  
*telex: 35313*  
*cables: Powerarm Ludlow*



## INTRODUCTION

Read this manual before fitting or operating the machine. Whenever any doubt exists contact your dealer or the McConnell Service Department for assistance.

Use only McConnell spare parts on McConnell equipment and machines. This manual includes an illustrated spare parts breakdown and interpretation which precedes it should be read before ordering replacement components.

## DEFINITIONS

The following definitions apply throughout this manual:-

### WARNING

An operating procedure, technique etc., which will result in personal injury or loss of life if not observed carefully.

### CAUTION

An operating procedure, technique etc., which will result in the damage of either machine or equipment if not observed carefully.

### NOTE:

An operating procedure, technique etc., which is considered essential to emphasise.

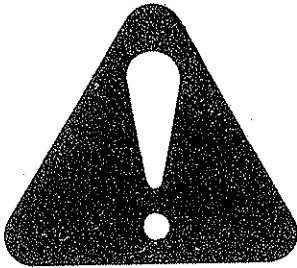
### Left and Right-Hand

This term is applicable to the machine when fitted to the tractor and viewed from the rear. This also applies to tractor references.

Record the serial number of your machine on this page and always quote this number when ordering spares. Whenever information concerning the machine is requested remember to also state the type of tractor to which it is fitted.

MACHINE SERIAL NUMBER		INSTALLATION DATE
MODEL DETAILS		
DEALERS NAME		
DEALERS TELEPHONE NUMBER		





## **WARNING**

- NEVER
- ..... Exceed the safe working load of 800 lbs (363 kg).
  - ..... Stand under a raised load.
  - ..... Leave the tractor hydraulic lever in raised position when load is fully raised.
- ALWAYS
- ..... Use a tractor that can maintain 2000 p.s.i.
  - ..... Carry a loader Bale Slave just clear of the ground when travelling over rough terrain.
  - ..... Check wire rope for tightness and security and inspect for any broken or corroded strands before operation.
  - ..... Lower loader and switch off tractor if operator leaves machine.
  - ..... Set tractor wheels for maximum stability.
  - ..... Check that hoses are not strained pinched or chafed.
  - ..... Check that spring cotters lynch pins, etc are in good condition and securely fitted.
  - ..... Check that there is sufficient oil in the system to operate the machine.

PRELIMINARY NOTE.

MECHANICAL FITTINGS.

Due to frequent design changes to the wide range of tractor cabs, and consequent alterations to loaders, we cannot guarantee that the fittings we supply will fit without modification.

Any information explaining such alterations will be gratefully received and will help us to update the fittings.

HYDRAULIC FITTINGS ON "Q" CAB TRACTORS

Additional information to instruction manual.

Diverter valve should be mounted onto suitable plate attached to tractor seat.

In order to connect bale slave gripper ram to diverter valve inside cab, an extension hose 85 31 233 3/8" BSP female straight - 3/8" BSP female 90° - 7ft long + union 60 00 113 will be required - this hose is routed under tractor from gripper ram and then up and through rear window to diverter valve.

To connect diverter valve into front end loader circuit, extension hoses 85 21 013 3/8" BSP straight male - 3/8" BSP straight female - 33" long - 2 off, will be required - these can be routed up and through rear window.

Note:

A diverter valve is not required if tractor has a spare coupling to spool remote cylinder control valve, bale slave gripper ram can be connected direct to this coupling.

## SECTION 2

### FITTING

Check that you have received all parts and packages i.e. main assembly, rear pillars and bases and the hydraulic fitting kit.

#### CAUTION

Do not remove the gripper arm, wooden packing piece at this stage.

#### TRACTOR SELECTION

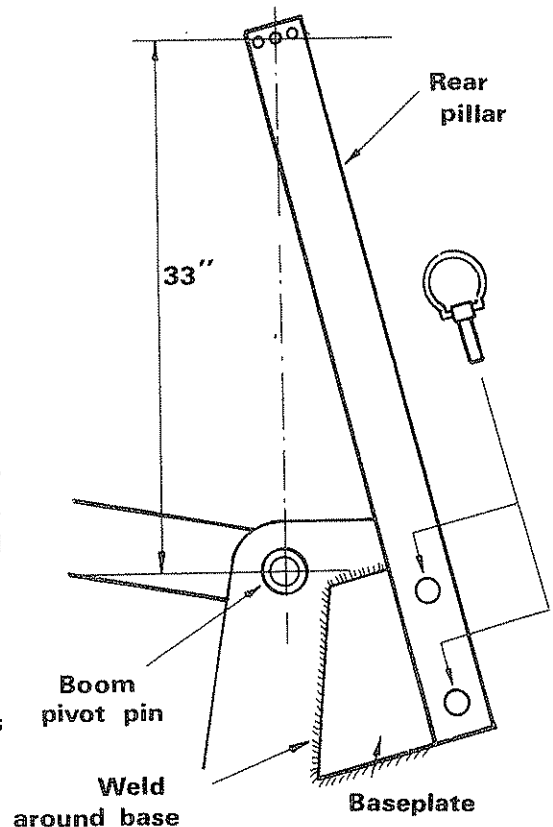
The tractor selected must be capable of maintaining a minimum of 2000 psi. (137.9 bars).

#### LOADER PREPARATION

Two types of pillar mounting base are available.

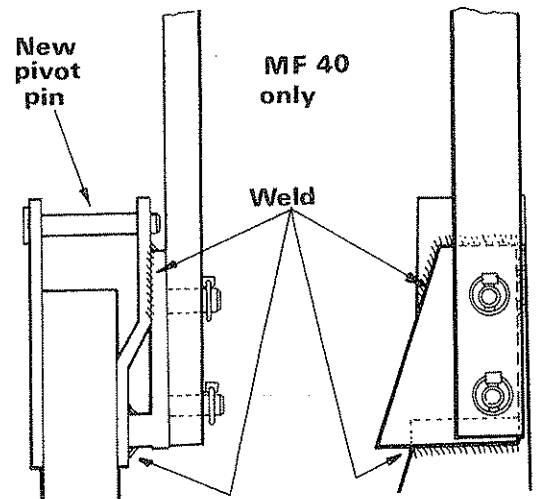
- a) Weld on type BP1;
- b) Bolt on multifit type BP2 enabling the Bale Slave to be interchanged for operation on several tractors.

1. Fitting weld on type.
  - i) Attach rear pillar to weld on base and secure with two linchpins.
  - ii) Locate weld on base and pillar in position shown on outside of loader support and temporarily clamp in place avoiding obstructing the loader pivot pin.
  - iii) Tack weld base in position, remove clamp and re-check measurement before completing a strong continuous weld around base.
  - iv) On completion clean and protect joints with paint.



A special weld on base is supplied for MF 40 loaders which has an additional block welded to the inside of the plate to give clearance to the flaired loader support pillar.

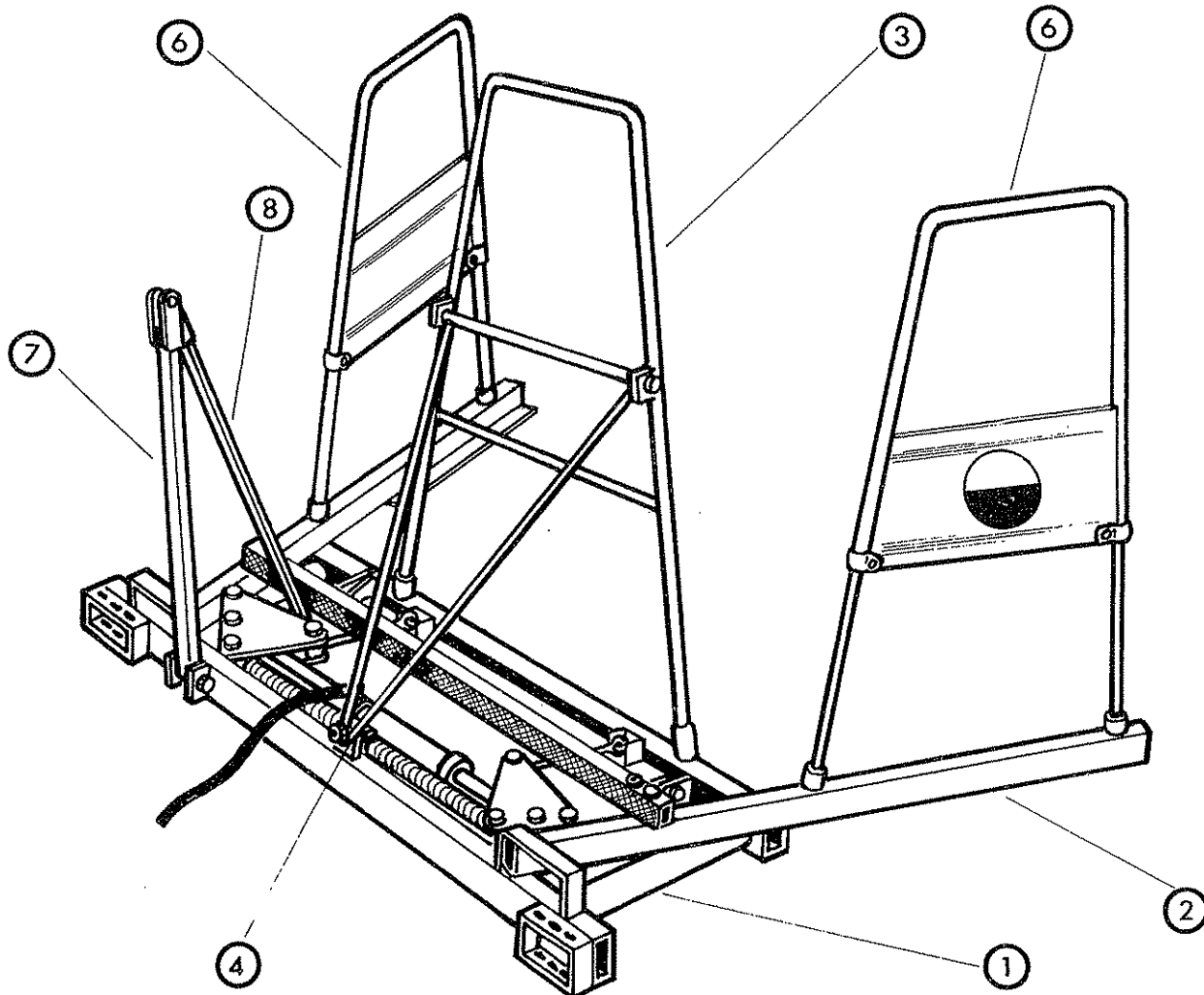
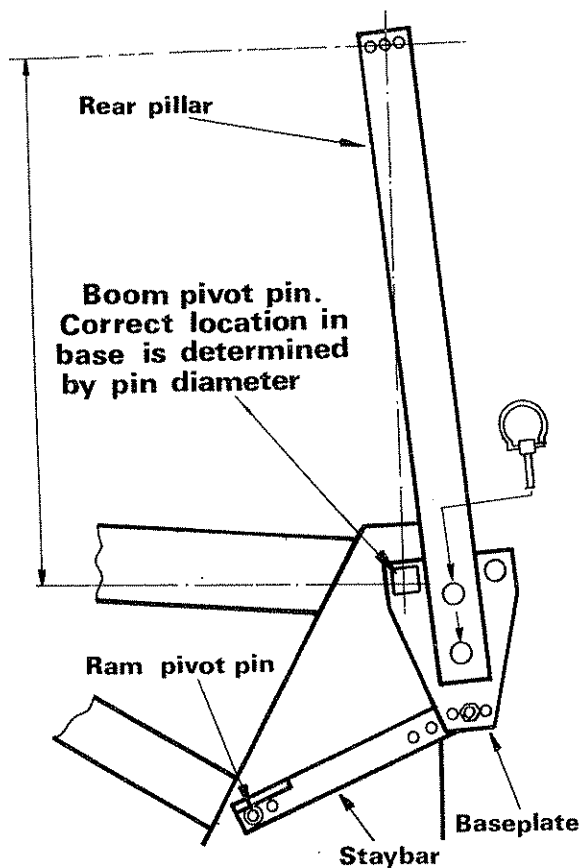
The above instructions are still applicable but the existing MF boom pivot pin is discarded and replaced by a McConnel pin Part No. 11 51 117.



Fitting Multifit type.

- i) Lower loader arm to the ground and remove left hand boom pivot pin.
- ii) Position base against loader frame and fit new pivot pin through the correct base location and secure.
- iii) Remove ram pivot pin and with locking tab facing outwards position stay bar against loader frame and align correct hole. Fit new ram pivot pin head outwards and secure.
- iv) Fit pillar to base and secure with linch pins.
- v) Position pillar with one of the wire ropes locating holes vertically above the boom pivot pin.
- vi) Align stay bar with base and secure with bolt and locknut.

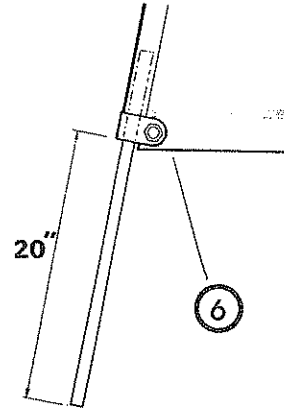
#### BALE SLAVE PREPARATION



1. Place the main frame (1) on level ground with the gripper arms (2) uppermost and remove the wooden packing piece. This should be done with caution as it retains the gripper arms against the return spring pressure.

2. Fit the rear support frame (3) by inserting the legs into the locating sockets on the cross member and securing the 'V' shaped hinge (4) to the main frame with washer and aeronut.
3. Fit right and left hand side frames (6) to the gripper arm in the following manner:-

- i) Position one sliding leg of the side frame so that it protrudes about twenty inches below the clip and tighten. The other should remain loose at this stage.
- ii) Place the fixed leg in its socket on the gripper arm then fit the loose one into its socket and tighten.

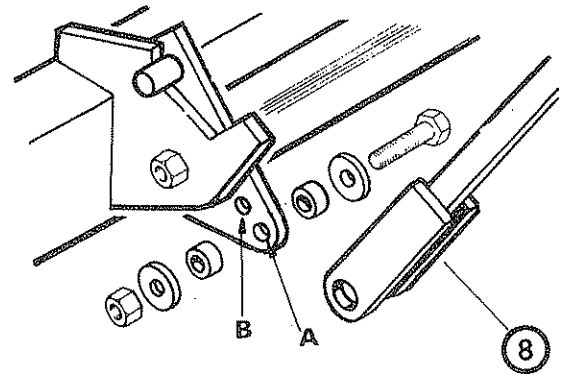


Note

The legs of the rear support frame and the side frames must be located in their support sockets to a minimum depth of four and five inches respectively.

4. Fit front pillar (7) between main frame lugs with bolt and aeronut.

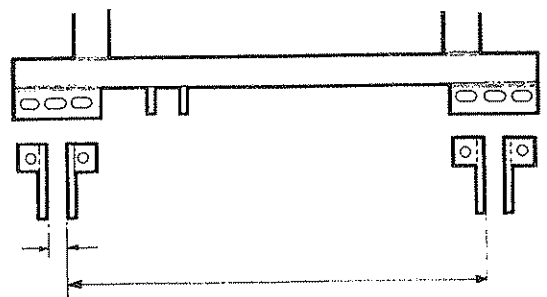
5. Fit front stay (8) with two bush spacers to the torque tube rocker plate using bolt, washers and aeronut.



Note

The front stay has two possible locations on the torque tube rocker plate. Hole 'A' for tractors with capability of maintaining in excess of 2000 psi. Hole 'B' for tractors with capability of maintaining just 2000 psi.

6. Measure the width of the loader arms and the distance between them and locate the attachment brackets centrally in the main frame sockets to suit, with the bolt heads on the underside.

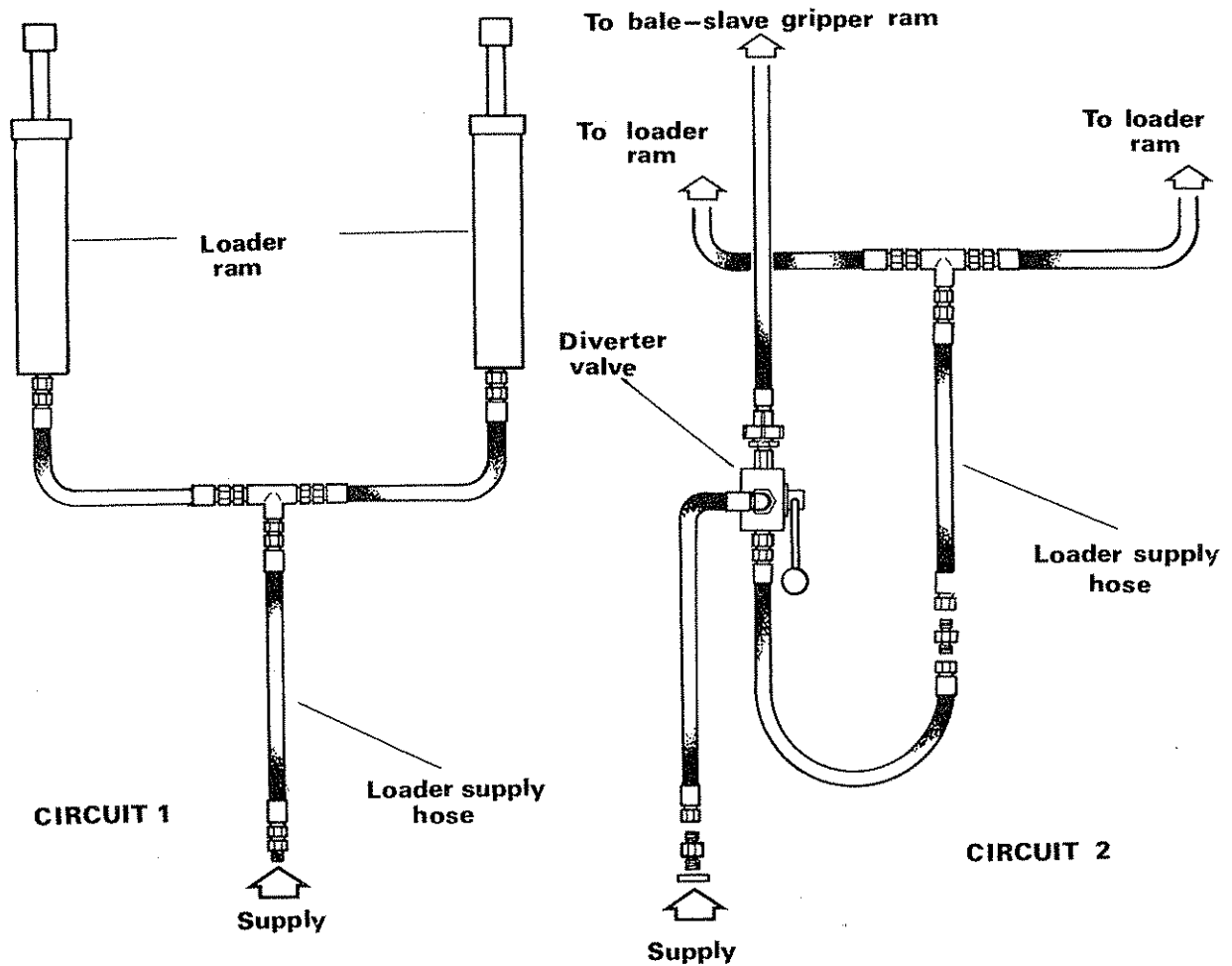




## BALE SLAVE HYDRAULIC FITTING

Two hydraulic fitting kits, 11 51 799 and 11 51 800 are available. These consist of hoses, unions, banjo bolts, washers and bonded seals in sufficient quantities to enable a wide combination of tractors and loaders to be fitted.

On the following five pages some common tractors are covered in detail for those not mentioned the following general information may be useful.



The basic principle of hydraulic fitting is to convert circuit 1 (tractor loader circuit) to circuit 2 (tractor - baleslave - loader circuit). This is achieved by:-

Mounting diverter valve on suitable side of tractor wing with self-seal coupling facing forward.

Disconnecting loader ram supply hose at tractor.

Select a suitable hose from the hydraulic fitting kit and connect up to the tractor and the top of the diverter valve using the end fittings available.

Using the remaining hose from the hydraulic fitting kit connect up to the tapping in the diverter valve opposite the self seal coupling and to the disconnected end of the loader ram supply hose using suitable end fittings.

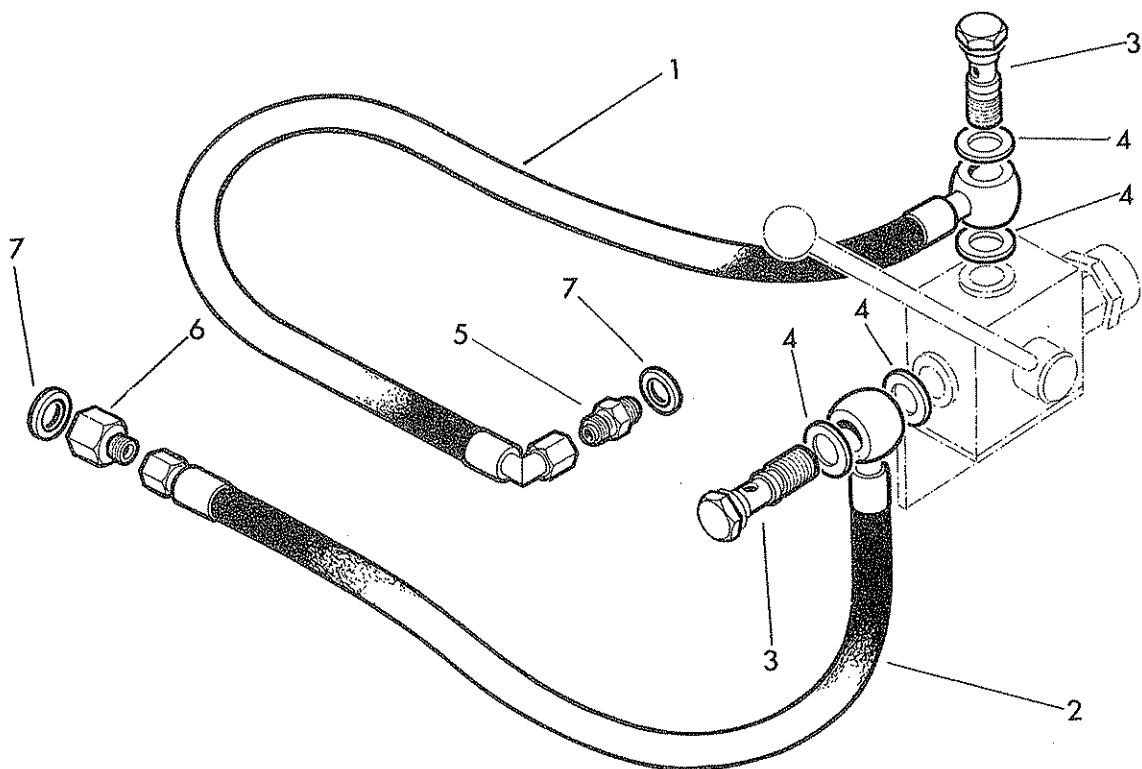
On completion some end fittings will be left over.

FORD

FORDSON, DEXTA - SUPER DEXTA, MAJOR, POWER MAJOR,  
SUPER MAJOR

HYDRAULIC FITTING SET 11 51 800 using only the following items:-

Ref	Part No.	Qty	Description
1	85 01 002	1	Hose 30" long 3/8" banjo 3/8" BSP F. 90°
2	85 01 003	1	Hose 30" long 3/8" banjo 3/8" BSP F. straight
3	11 51 755	2	3/8" BSP banjo bolt
4	01 00 703	4	3/8" BSP copper washer
5	11 51 754	1	3/8" BSP - 1/2" BSP male-male adaptor
6	11 51 753	1	3/8" BSP - 1/2" BSP male-female adaptor
7	86 50 104	2	1/2" BSP bonded seal



Mount the diverter valve on the most suitable tractor wing with self seal coupling facing forward. Disconnect loader ram supply pipe from tractor and replace with hose (1) using end fittings 5 and 7. Connect other end of hose into the tapping in the top of the diverter valve using banjo fittings 3 and 4.

Connect hose (2) into the tapping on the diverter valve opposite the self seal coupling using banjo fitting 3 and 4 and to the disconnected end of the loader ram supply hose using end fittings 6 and 7.

Note:-

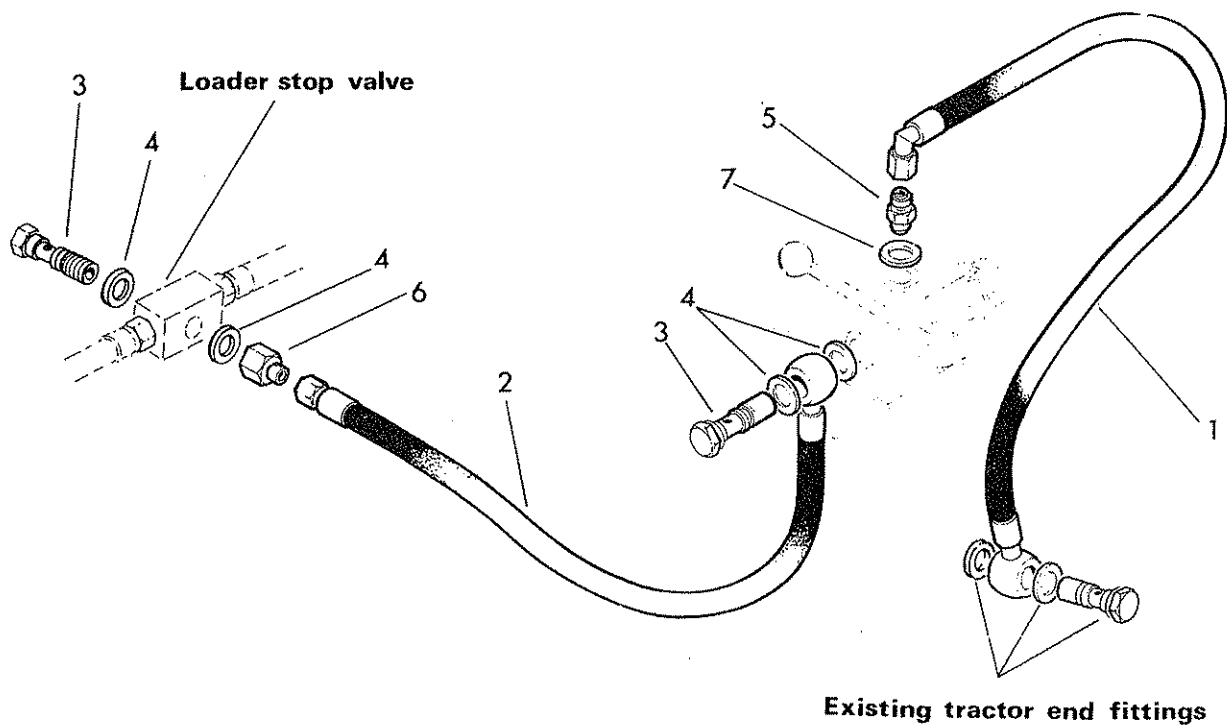
On certain loaders end fittings 5 and 6 are substituted one with the other.

FORD2000, 3000  
4000, 5000FERGUSON135, 165, 175,  
35, 65BMC

Mini

HYDRAULIC FITTING KIT 11 51 800 using only the following items:-

Ref	Part No.	Qty	Description
1	85 01 002	1	Hosé 30" long 3/8" banjo 3/8" BSP F .90°
2	85 01 003	1	Hose 30" long 3/8" banjo 3/8" BSP F straight
3	11 51 755	2	3/8" BSP banjo bolt
4	01 00 703	4	3/8" BSP copper washer
5	60 00 113	1	3/8" BSP male-male adaptor
6	11 51 759	1	3/8" BSP male-female adaptor
7	86 50 103	1	3/8" BSP bonded seal



Mount diverter valve on the most suitable tractor wing with self seal coupling facing forward. Disconnect loader ram supply hoses and loader stop valve and replace with hose (1) using existing tractor banjo fittings. Connect the other end to the tapping in the top of the diverter valve using end fittings 5 and 7.

Connect hose (2) to the tapping in the diverter valve opposite the self seal coupling using banjo fittings 3 and 4. Connect the other end to the loader stop valve using end fittings 3, 4 and 6.

LEYLAND

NUFFIELD

LEYLAND 154,344,384.

NUFFIELD DL3,DM4,460,1042,1060

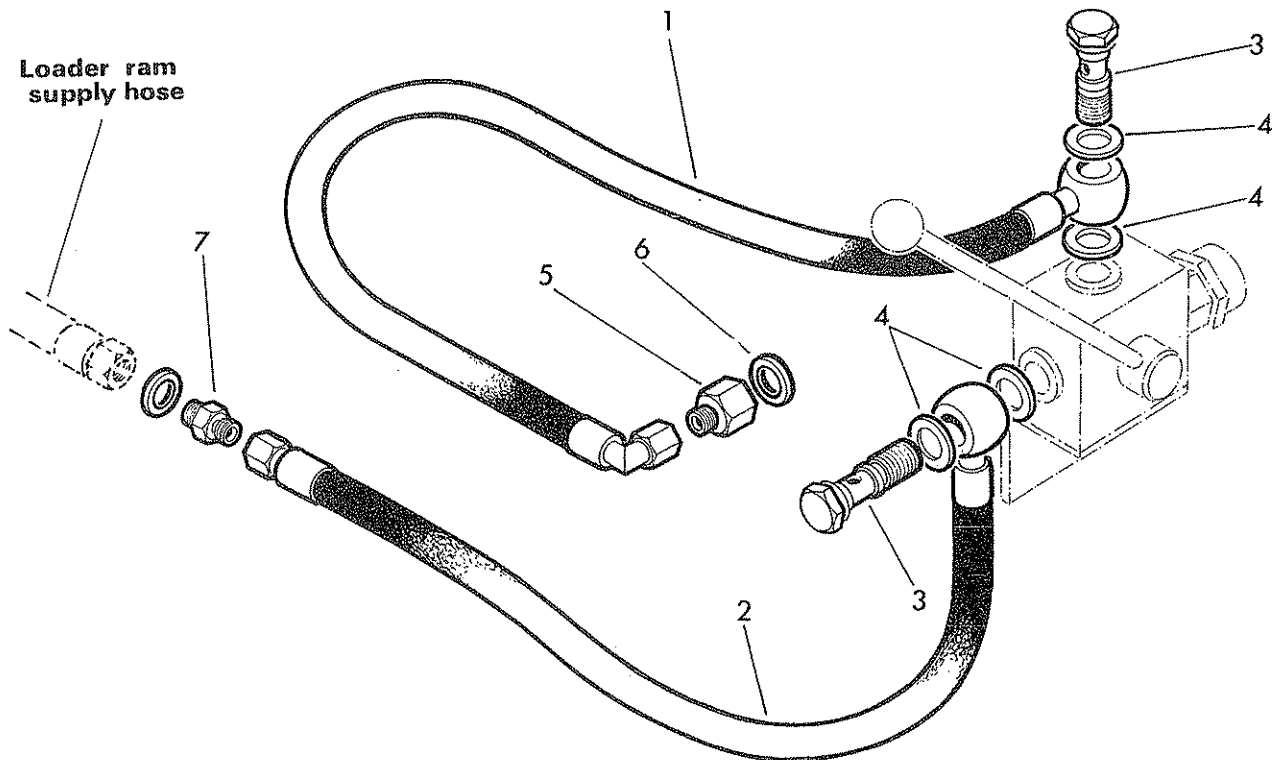
From hydraulic fitting set 11 51 799 use only the following items:-

HYDRAULIC HOSES

Ref	Part No	Qty	Description
1	85 01 004	1	48" hose 3/8" banjo - 3/8" BSP 90° F
2	85 01 005	1	48" hose 3/8" banjo - 3/8" BSP straight F.

END FITTINGS

3	11 51 755	2	3/8" BSP banjo bolt
4	01 00 703	4	3/8" BSP copper washer
5	11 51 753	1	3/8" BSP male - 1/2" BSP female adaptor
6	86 50 104	1	1/2" BSP bonded seal
7	11 51 754	1	3/8" BSP - 1/2" BSP male-male adaptor

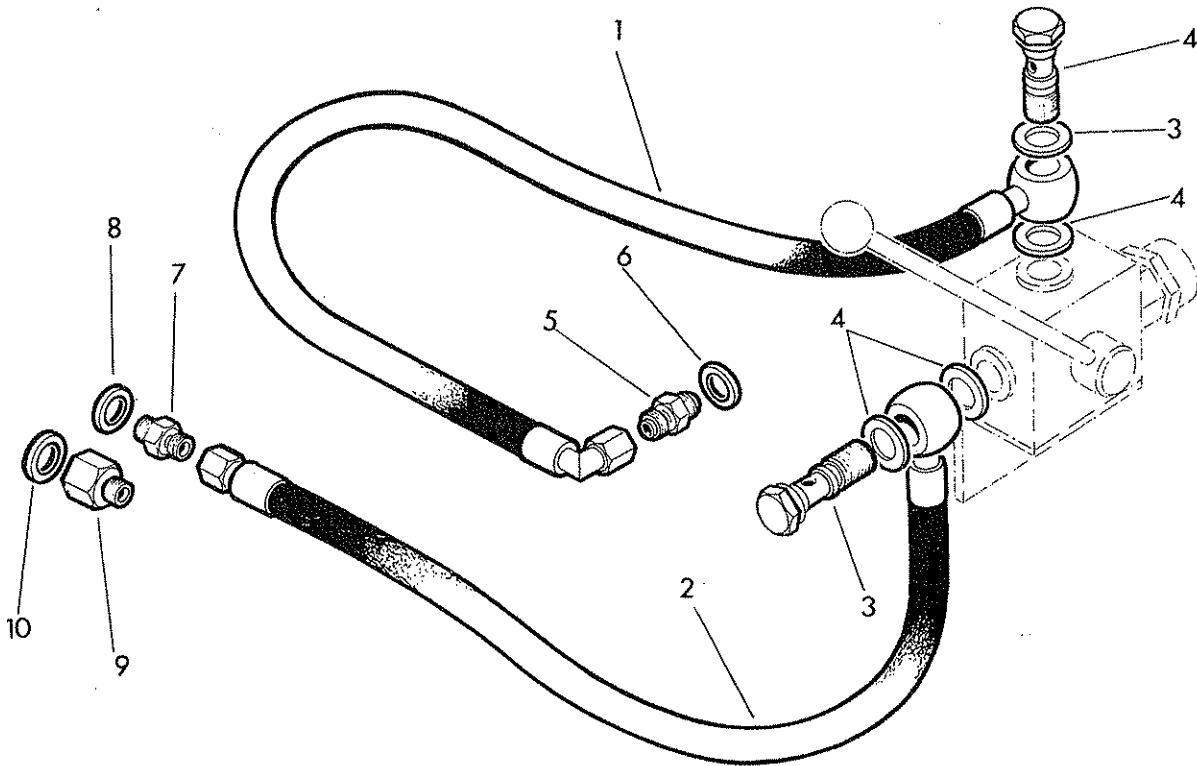


FITTING INSTRUCTIONS

Mount diverter valve bracket on suitable side of tractor wing with self seal coupling facing forward. Disconnect loader ram supply pipe from tractor hydraulic tapping. Replace with pipe (1) using endfittings (5) and (6). Connect banjo end of hose to top of diverter valve using end fittings (3) and (4). Connect hydraulic hose (2) into the tapping in the diverter valve opposite the seal seal coupling using end fittings (3) and (4) and the other end to the disconnected end of the loader ram supply hose using (7).

HYDRAULIC FITTING SET NO. 11 51 800. Using only the following items:-

Ref	Part No	Qty	Description
<b>HYDRAULIC HOSES</b>			
1	85 01 002	1	30" hose 3/8" banjo 3/8" BSP F.90°
2	85 01 003	1	30" hose 3/8" banjo 3/8" BSPF - Straight
<b>END FITTINGS - 3/8" BSP male - male adaptor before AL2 Serial No. 12047.</b>			
3	11 51 755	2	3/8" BSP Banjo bolt
4	01 00 703	4	3/8" BSP copper washer
5	60 00 113	1	3/8" BSP male-male adaptor
6	86 50 103	1	3/8" BSP bonded seal
7	60 00 113	1	3/8" BSP male-male adaptor Before AL2
8	86 50 103	1	3/8" BSP bonded seal Machine No. 12047.
9	11 51 753	1	3/8" BSP male 1/2" female adaptor After AL2
10	86 50 104	1	1/2" BSP bonded seal M/c No. 12047



FITTING INSTRUCTIONS

Mount control bracket on suitable side of tractor wing with self seal coupling facing forward. Disconnect loader ram supply pipe from tractor valve block and replace with hydraulic pipe (1).

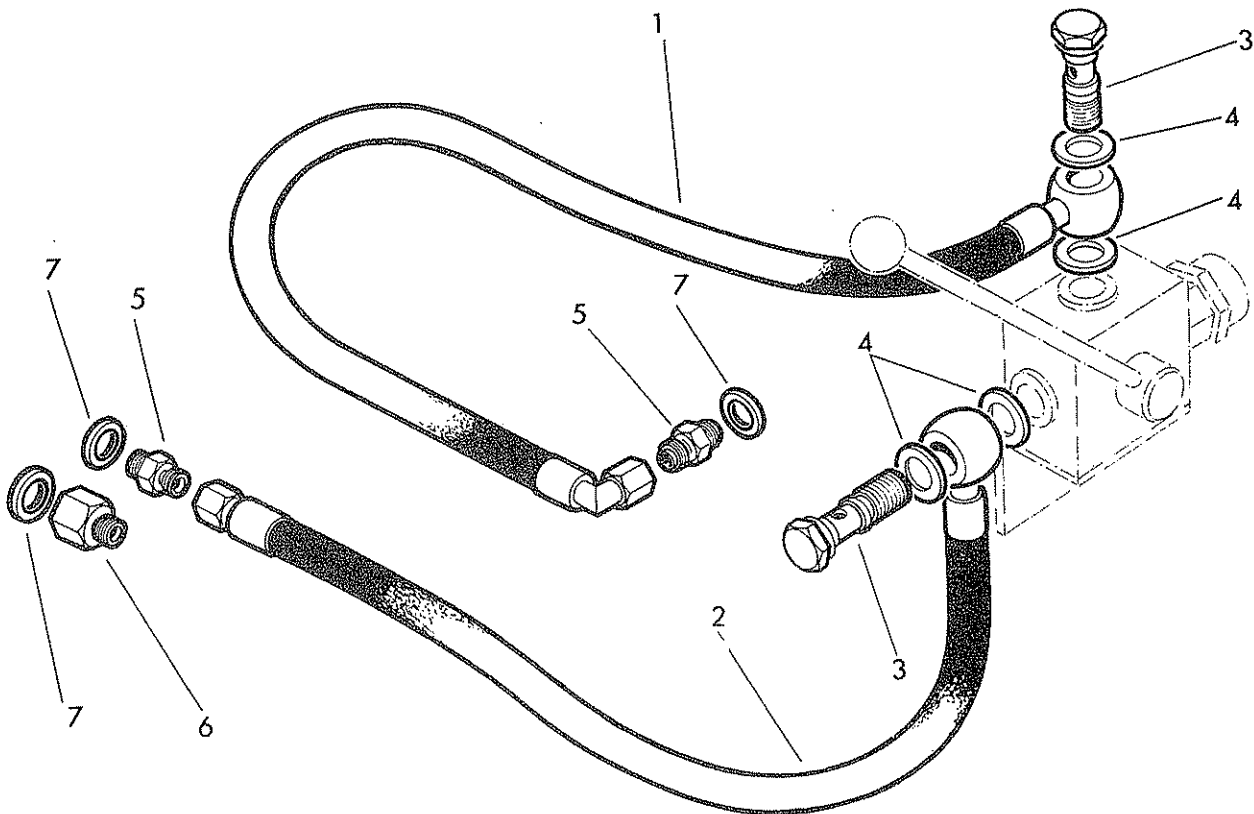
On David Brown AL2 loaders, after Serial No. 12047, remove existing adaptor and replace with items (5) and (6). Connect the banjo end of the pipe to top of diverter valve using items (3) and (4).

Connect hydraulic pipe (2) into the control valve tapping opposite self sealing coupling using items (3) and (4). Also connect to the end of loader pipe using items (7) and (8), before David Brown loader AL2 Serial No. 12047 and items (9) and (10) after that serial no.

INTERNATIONAL  
B250, 434, 275, 414

HYDRAULIC FITTING KIT 11 51 800, using only the following items:-

Ref	Part No.	Qty	Description
1	85 01 002	1	Hose 30" long 3/8" banjo 3/8" BSP F. 90°
2	85 01 003	1	Hose 30" long 3/8" banjo 3/8" BSP F. straight
3	11 51 755	2	3/8" BSP banjo bolt
4	01 00 703	4	3/8" BSP copper washer
5	11 51 754	2	3/8" BSP - 1/2" BSP male-male adaptor
6	11 51 753	1	3/8" BSP - 1/2" BSP male-female adaptor
7	86 50 104	2	1/2" BSP bonded seal

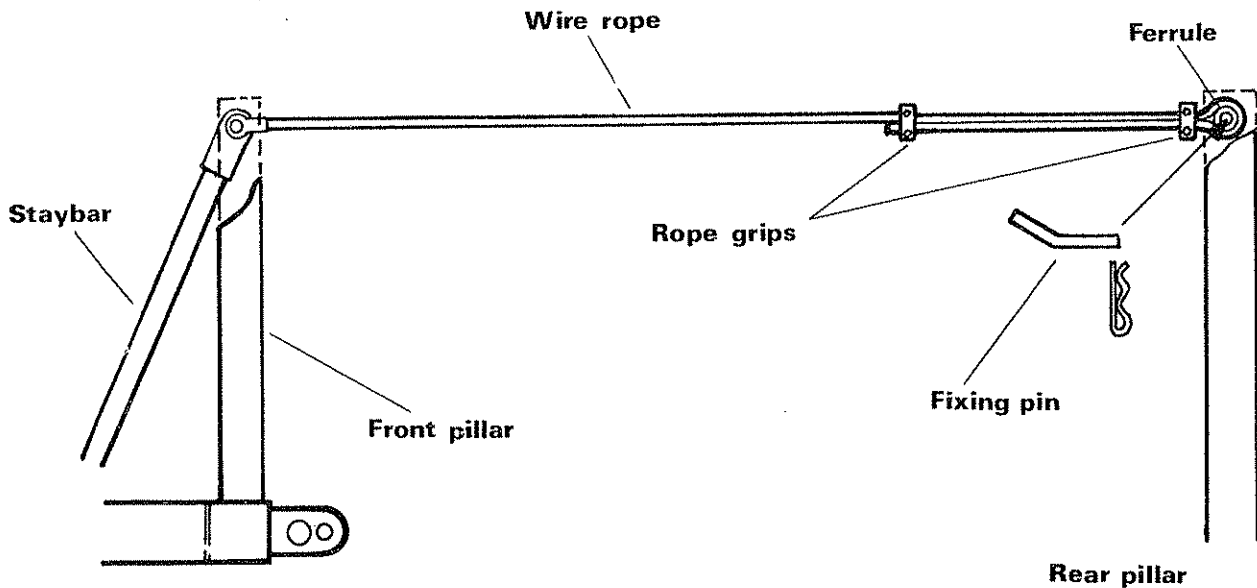


Mount diverter valve on the most suitable tractor wing with self seal coupling facing forward. Disconnect loader ram supply hose from tractor valve block and replace with hose (1), using end fittings 5 and 7. Connect other to the tapping in the top of the diverter valve using banjo fittings 3 and 4.

Disconnect loader ram supply hose from the loader stop valve and remove the adaptor. Replace with hose (2) using either end fittings 5 and 7 or 6 and 7, whichever is suitable. Connect the other end to the tapping in the diverter valve opposite the self seal coupling using banjo fittings 3 and 4.

## ATTACHMENT OF BALE SLAVE TO LOADER

1. Lower loader arms and drive-up squarely behind bale slave and position the loader arms between the attachment brackets and secure with the loader bucket pivot pins.



2. Position the stay and the eye end of wire rope between the jaws of the front pillar and secure with bolt and locknut.
3. Fit wire rope to the rear pillar using the rope ferrule and cable grips. Secure with pin and spring cotter.

### NOTE

The correct length of the wire rope is determined with the the bale slave parallel to the ground. Allow for initial stretch by attaching the rope one inch shorter than the correct length.

4. Connect the bale slave gripper ram supply hose to the diverter valve making sure the self seal coupling is fully engaged.

### CAUTION

Ensure the gripper ram supply hose is well supported and routed so that it cannot be damaged, strained, chafed or trapped.

## BALE SLAVE REMOVAL

1. With bale slave on the ground disconnect the ram supply hose at the self-seal coupling.
2. Disengage wire rope from rear pillar.
3. Coil wire rope and ram supply hose around the rear support frame.
4. Remove loader arm pins and reverse loader from bale slave

## SECTION 3

### OPERATION

1. The Bale Slave is designed to hold a stack of up to eight standard bales securely. Do not exceed a load of 800 pounds.

A stack of bales will be held securely whichever way they are approached, however, if the bales are of unequal lengths it is advisable to approach the stack along the lengthwise line of the bottom two bales.

After continual use the wire rope may stretch to a point where the parallel linkage setting requires adjustment to restore the original Bale Slave operating position.

- a) The diverter valve supplied with the Bale Slave is designed for use in conjunction with the tractor hydraulic control lever—diverting the tractor hydraulic supply to the loader rams or Bale Slave gripper ram, as required. The diverter valve lever has two positions, determined by stops on the valve block. The selections are as follows:-
  - i) Control lever set to rear – Loader rams can be operated by the tractor hydraulic control lever – Do not leave the lever selected in the 'RAISE' position.
  - ii) Control lever set forward – Tractor hydraulic control lever operates the Bale Slave gripper ram with the loader rams held in whatever position was previously selected.

#### 2. Operating Instructions

- a) Set control valve lever to rear.
- b) Approach a stack of bales with Bale Slave positioned three to four inches above the ground.
- c) Drive the tractor forward until the Bale Slave rear support contacts the bales. Stop the tractor, set control lever forward and select tractor hydraulic lever to 'raise'. The gripper ram will then operate the arms to grip and tilt the stack.
- d) Wait until the loaded Bale Slave is fully tilted then set the control valve lever to the rear. The loader will raise and the gripper ram will maintain the firm hold of the stack. When the loader has reached the required height select the tractor hydraulic control lever to the 'hold' position.
- e) Drive the loaded bales to the trailer or stack, select 'lower' position on tractor quadrant lever and when bales are in required position push the Bale Slave control lever forward. This automatically stops the loader descent, returns the bales to a parallel position and releases the gripper arms.



## SECTION 4

### MAINTENANCE

#### 1. a) Hydraulics

When hydraulic failure is suspected, check:-

- i) tractor hydraulic oil level
- ii) tractor hydraulic supply is capable of maintaining 2000 psi
- iii) self-seal coupling is fully engaged
- iv) hoses are not trapped or leaking
- v) diverter control lever is correctly positioned.

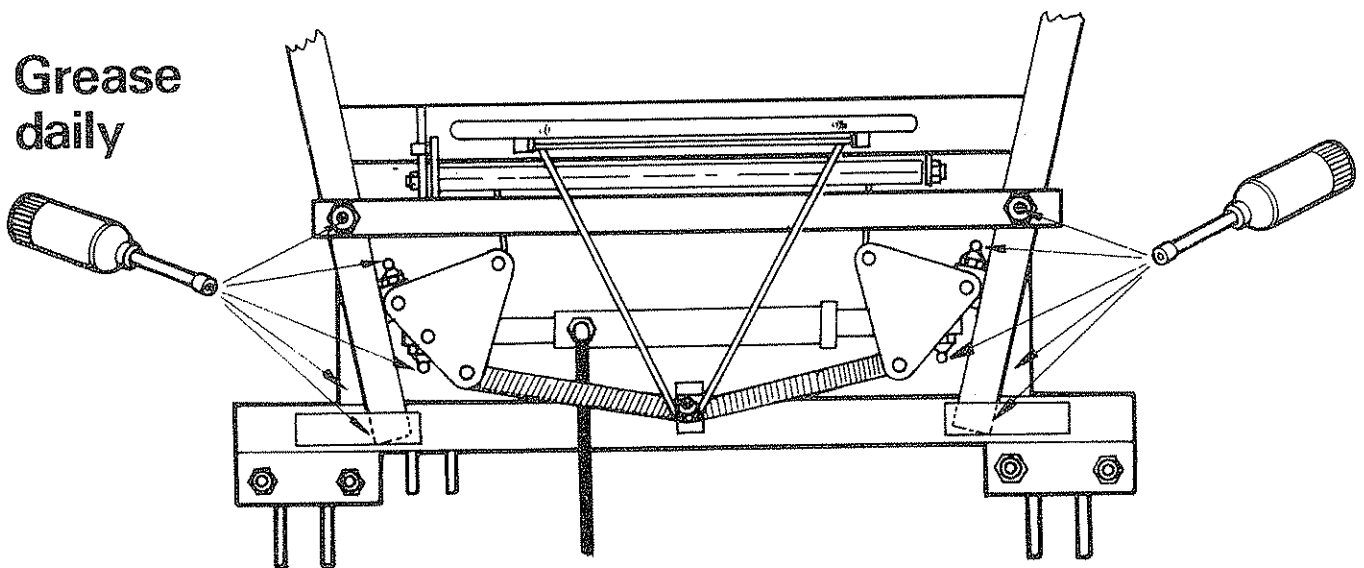
#### b) Flexible hoses

When hose replacement is necessary, observe the following:-

- i) replace one hose at a time to avoid risk of wrong connections
- ii) where the hose is connected to screwed-in nipple or adaptor, use a second spanner on the flats of the union to prevent breaking both seals
- iii) do not use jointing compound on the threaded joints.

#### c) Wire rope

When adjusting wire rope examine the complete length for broken strands or signs of corrosion. If in any doubt, replace. At the same time check for security, all nuts bolts and pins.



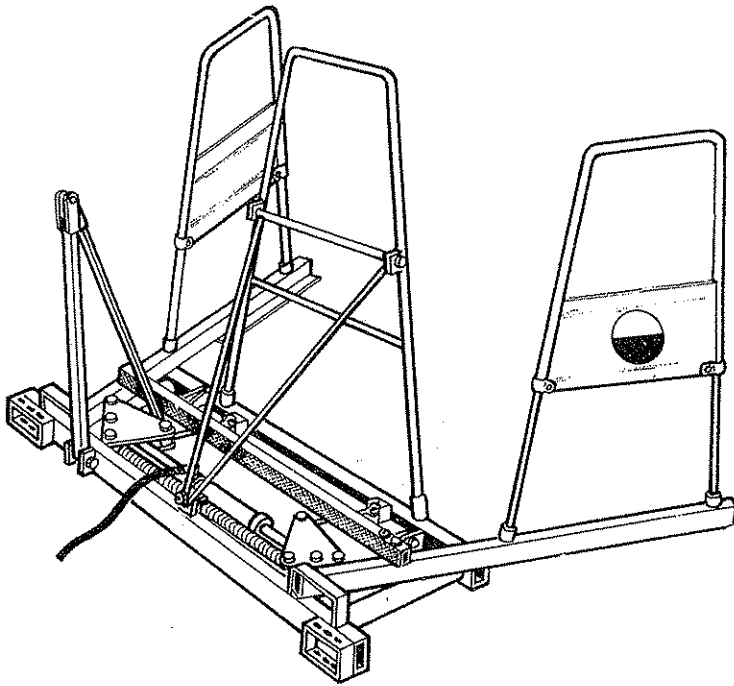
#### d) Lubrication

The machine number plate recommends the grade of grease required. Your dealer will supply a list of alternative greases where the recommended lubricant is not available. In addition to the pivot lubrication, smear a light coating of grease on the gripper arms and main frame guides.

#### e) Storage

- i) Apply a light coating of grease to the exposed portion of the gripper ram.
- ii) Cap and protect hose ends and slip a plastic bag over the self-seal coupling.
- iii) Wipe a light coating of grease on the wire rope.
- iv) Examine all moving parts for excessive signs of wear or damage, and order spares for replacement during the storage period.

# SPARE PARTS MANUAL



## USE ONLY McCONNEL SPARE PARTS

To be assured of the latest design improvements purchase your genuine replacements from the original equipment manufacturer F.W. McConnel Ltd. through your local dealer or stockist.

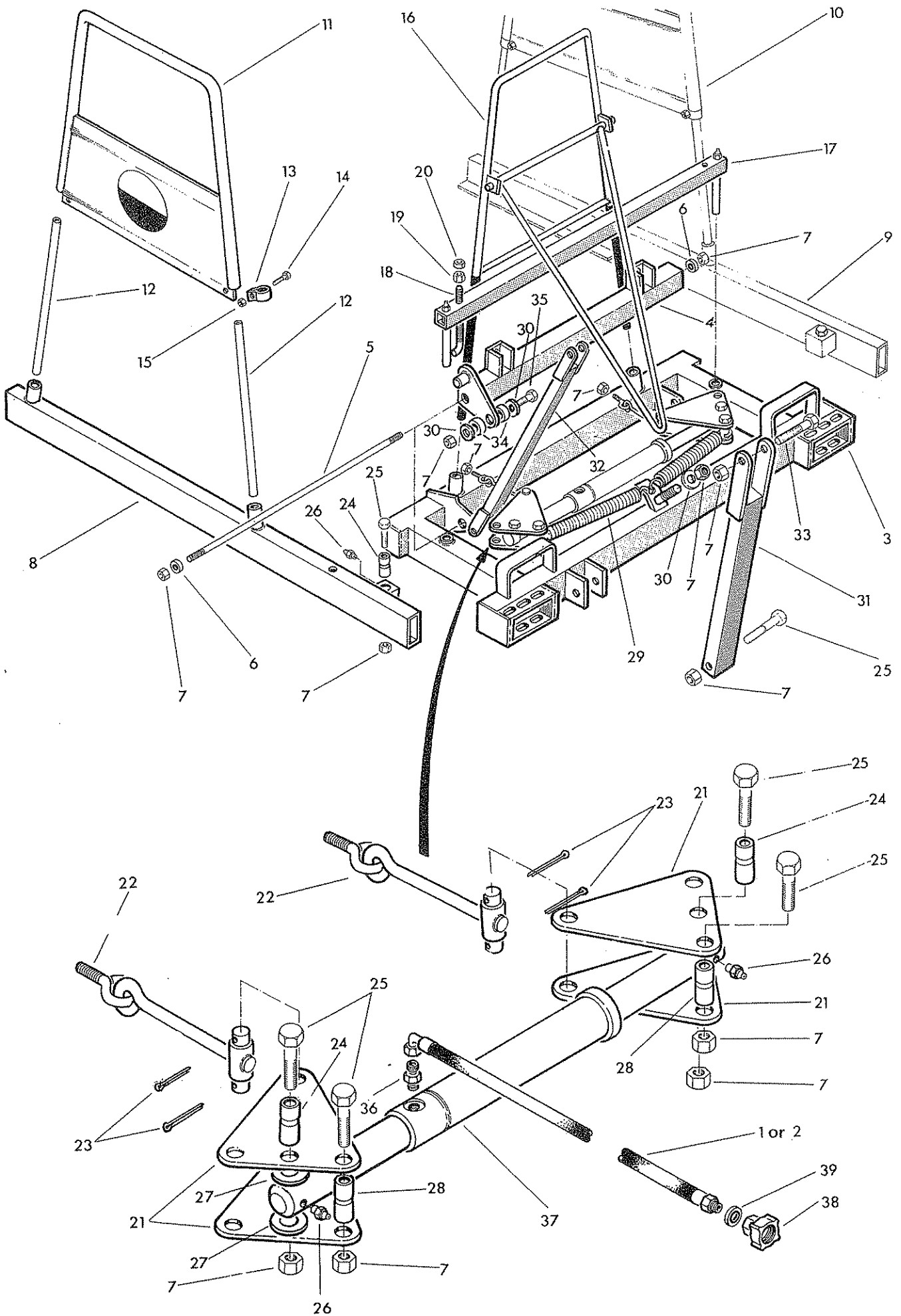
Always quote machine type and serial number as well as the part number.

Design improvement may have altered some of the parts listed in this manual - The latest part will always be supplied when it is interchangeable with an earlier one.

## THE DOT SYSTEM

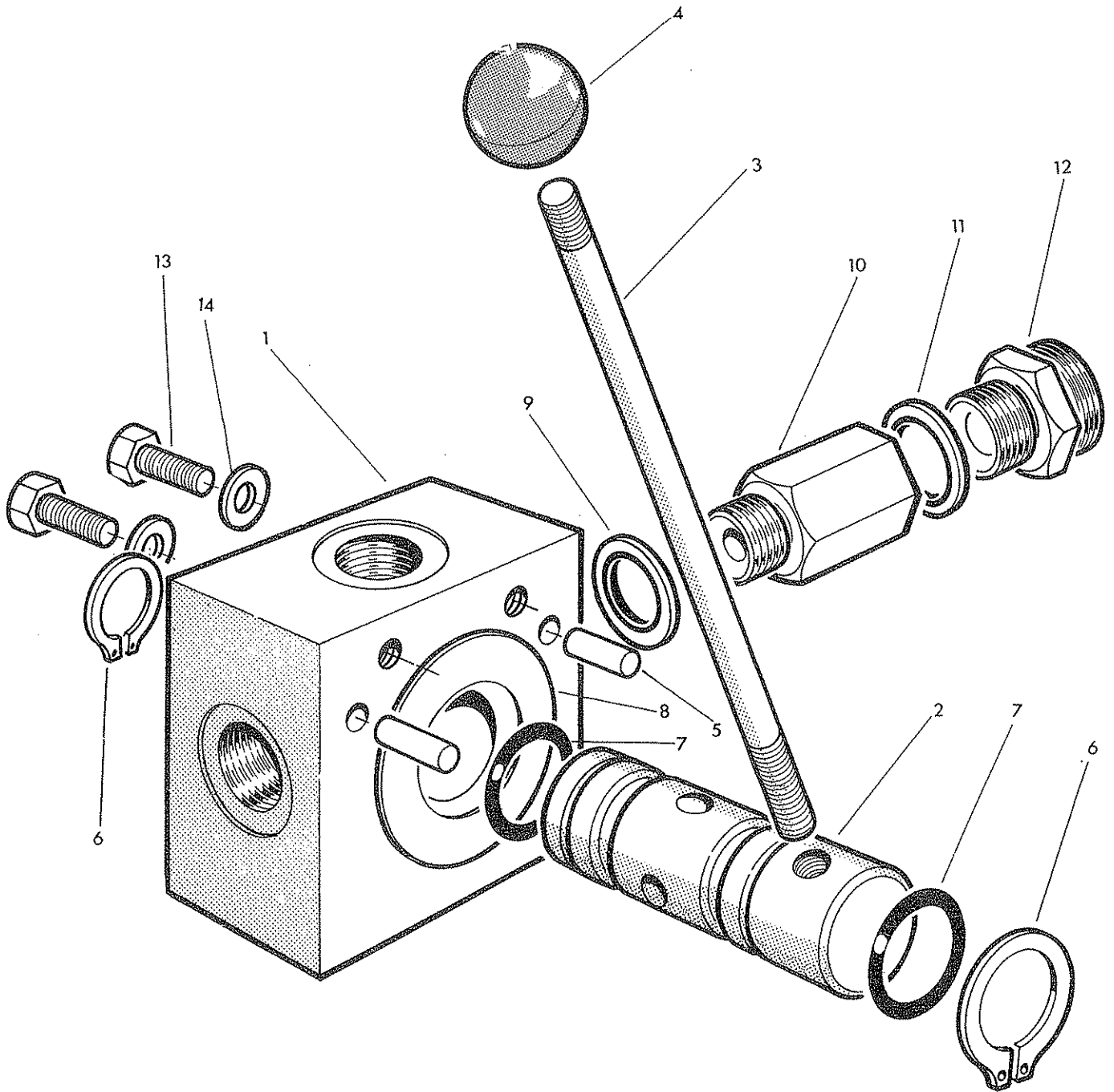
Many spares are supplied as Assemblies or as Sub assemblies and to help the customer determine the composition of an Assembly the Dot System is used. The Main Assembly will not show a dot preceding its description and is printed in BLOCK CAPITALS. Subsequent listed parts are preceded by one or more dots until the next major assembly is reached. An increase in the number of preceding dots indicates that the item is an associated part of the preceding item. Whenever the number of dots are decreased by one this indicates the termination of an assembly.

# BALE-SLAVE MAIN ASSEMBLY



Ref	Part No	Qty	Description
	11 51 001		BALE SLAVE MAIN ASSEMBLY
1	85 01 001	1	.Hose 3/8" BSP 204" long
	11 51 783		BALE SLAVE MAIN ASSEMBLY
2	85 01 006	1	.Hose 3/8" BSP 66" long
The following items are common to both Bale Slave Assemblies			
3	11 51 003	1	.Main frame
4	11 51 028	1	.Torque tube
5	11 51 089	1	.Torque tube spindle
6	11 51 101	2	.Torque tube bearing bush
7	91 53 006	14	.Aeronut M12
8	11 51 017	1	.Gripper arm - left hand
9	11 51 016	1	.Gripper arm - right hand
10	11 51 074	2	.Side frame assembly each comprising:-
11	11 51 127	1	..Main side frame
12	11 51 079	2	..Side frame legs
13	11 51 080	2	..Clip
14	93 13 033	2	..Bolt M6 x 16 long
15	91 43 003	2	..Aeronut M6
16	11 51 060	1	.Rear support assembly
17	11 51 050	1	.Hinge pin arm
18	11 51 090	2	.Clamp hook
19	91 53 004	2	.Aeronut M8
20	91 33 004	2	.Nut - plain
21	11 51 083	4	.Crank plate
22	11 51 084	2	.Connecting eye bolt c/w split pin
23	05 03 083	2	..Split pin
24	11 51 087	4	.Spacer
25	92 13 146	7	.Bolt M12 x 70 long
26	09 01 141	4	.Greaser
27	11 51 100	4	.Spacing washer
28	11 51 088	2	.Spring spacer
29	11 51 082	2	◀ .Return spring
30	01 00 105	3	.Washer
31	11 51 056	1	.Front pillar
32	11 51 068	1	.Front stay rod
33	92 13 136	1	.Bolt M12 x 65 long
34	11 51 099	2	.Stay rod spacer
35	92 13 096		.Bolt M12 x 45 long
36	60 00 113	1	.Adaptor
37	see page 20	1	.Gripper ram
38	85 90 023	1	.Female self seal coupling
39	86 50 103	1	.Bonded seal

# DIVERTER VALVE



Ref	Part No	Qty	Description
	11 51 779		DIVERTER VALVE ASSEMBLY complete
	11 51 780		.Diverter valve comprising:-
1	11 51 781	1	..Valve body
2	11 51 782	1	..Valve pin
3	11 51 758	1	..Lever
4	11 51 762	1	..Lever knob
5	05 05 096	2	..Mills pin
6	04 01 114	2	..Circlip
7	86 00 113	2	..'O' ring
8	11 51 093	1	.Label
9	86 50 103	1	.3/8" bonded seal
10	11 51 753	1	.3/8" BSP Male - 1/2" BSP female adaptor
11	86 50 104	1	.1/2" bonded seal
12	85 90 013	1	.Male self seal coupling
13	93 13 043	2	.M6 x 20 long set screw
14	01 00 101	2	.Washer

One of two hydraulic fitting kits is supplied in conjunction with the above assembly. These are:-

11 51 799			HYDRAULIC FITTING KIT comprising:-
85 01 004	1		.48" hose 3/8" banjo - 3/8" BSP 90° female
85 01 005	1		.48" hose 3/8" banjo - 3/8" BSP straight female
11 51 800			HYDRAULIC FITTING KIT comprising:-
85 01 002	1		.30" hose 3/8" banjo - 3/8" BSP 90° female
85 01 003	1		.30" hose 3/8" banjo - 3/8" BSP straight female

The following items are common to both hydraulic fitting kits:-

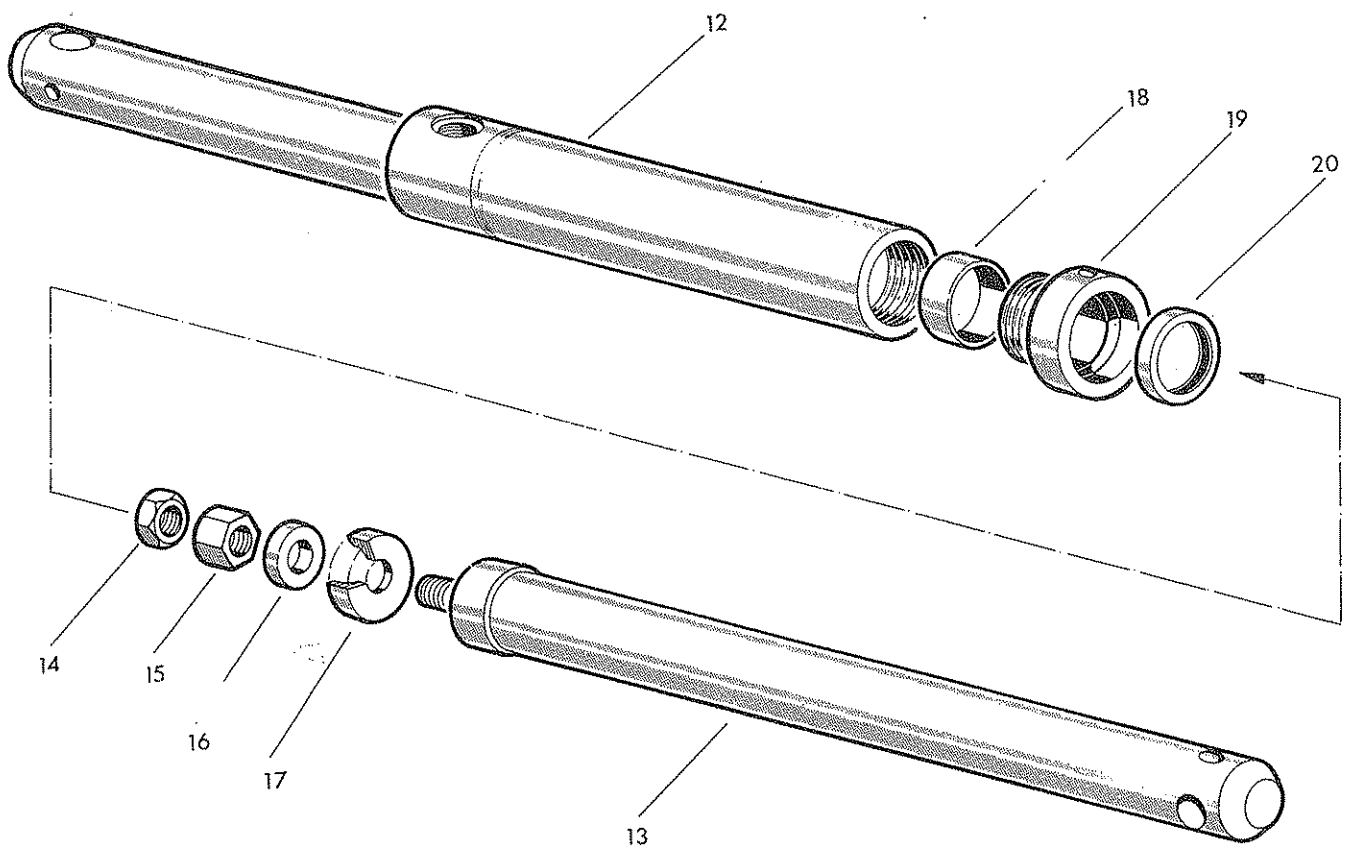
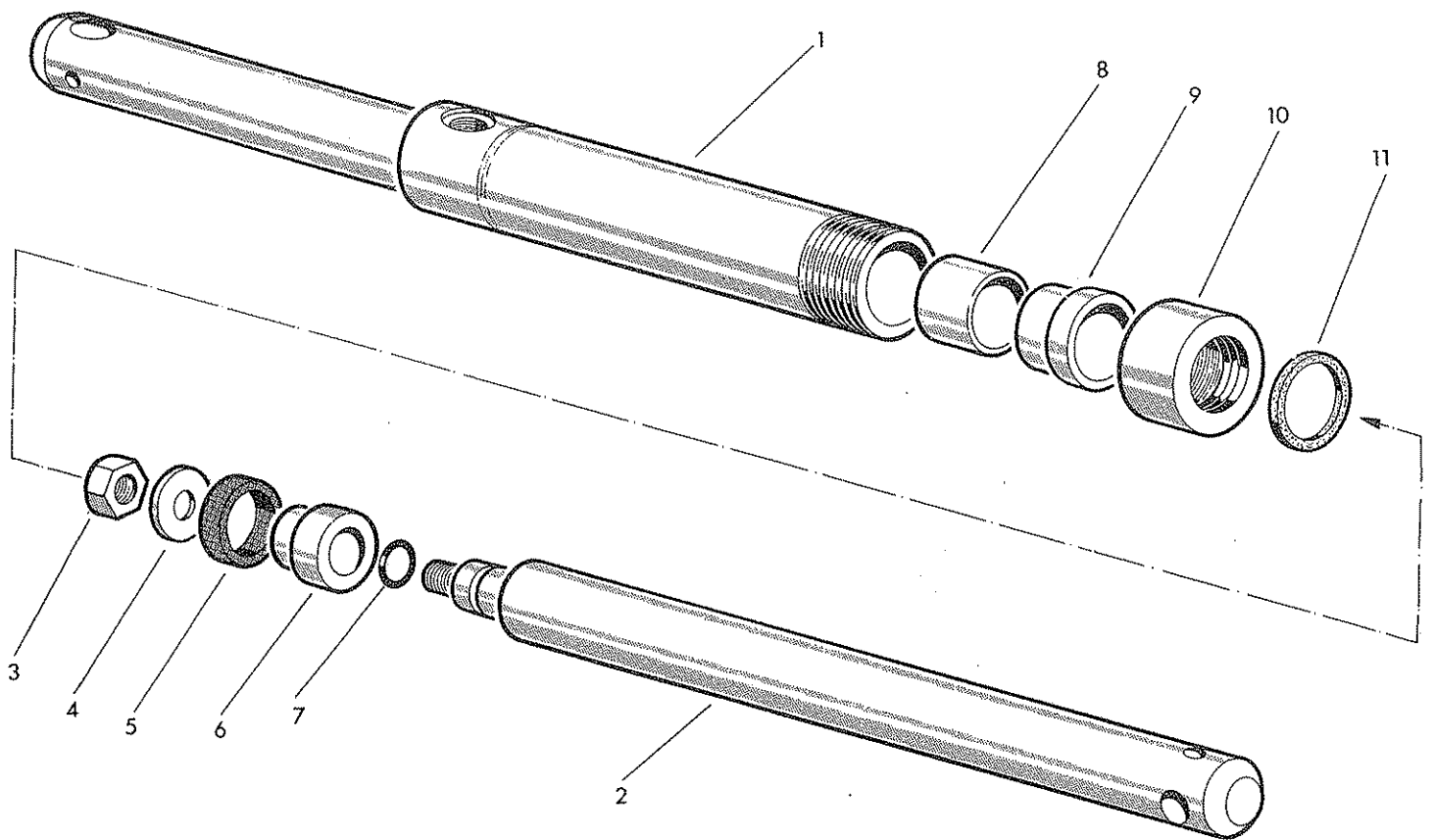
11 51 755	2		.3/8" BSP banjo bolt
01 00 703	4		.3/8" BSP copper washer
50 00 113	1		.3/8" BSP male - male - adaptor
11 51 754	2		.3/8" BSP - 1/2" BSP male - male adaptor
11 51 759	1		.3/8" BSP male - female adaptor
11 51 753	1		.3/8" BSP male - 1/2" BSP female adaptor
86 50 103	2		.3/8" BSP bonded seal
86 50 104	2		.1/2" BSP bonded seal

The above 2 hydraulic fitting kits are not illustrated.

In addition two extra fittings are supplied for Internationals 454 and 574 only. These are:-

11 51 760	1		7/8" UNF - 1/2" BSP female - female adaptor
11 51 761	1		Special 3/8" BSP male adaptor

# GRIPPER RAM ASSEMBLIES



## BALESLAVE GRIPPER RAMS

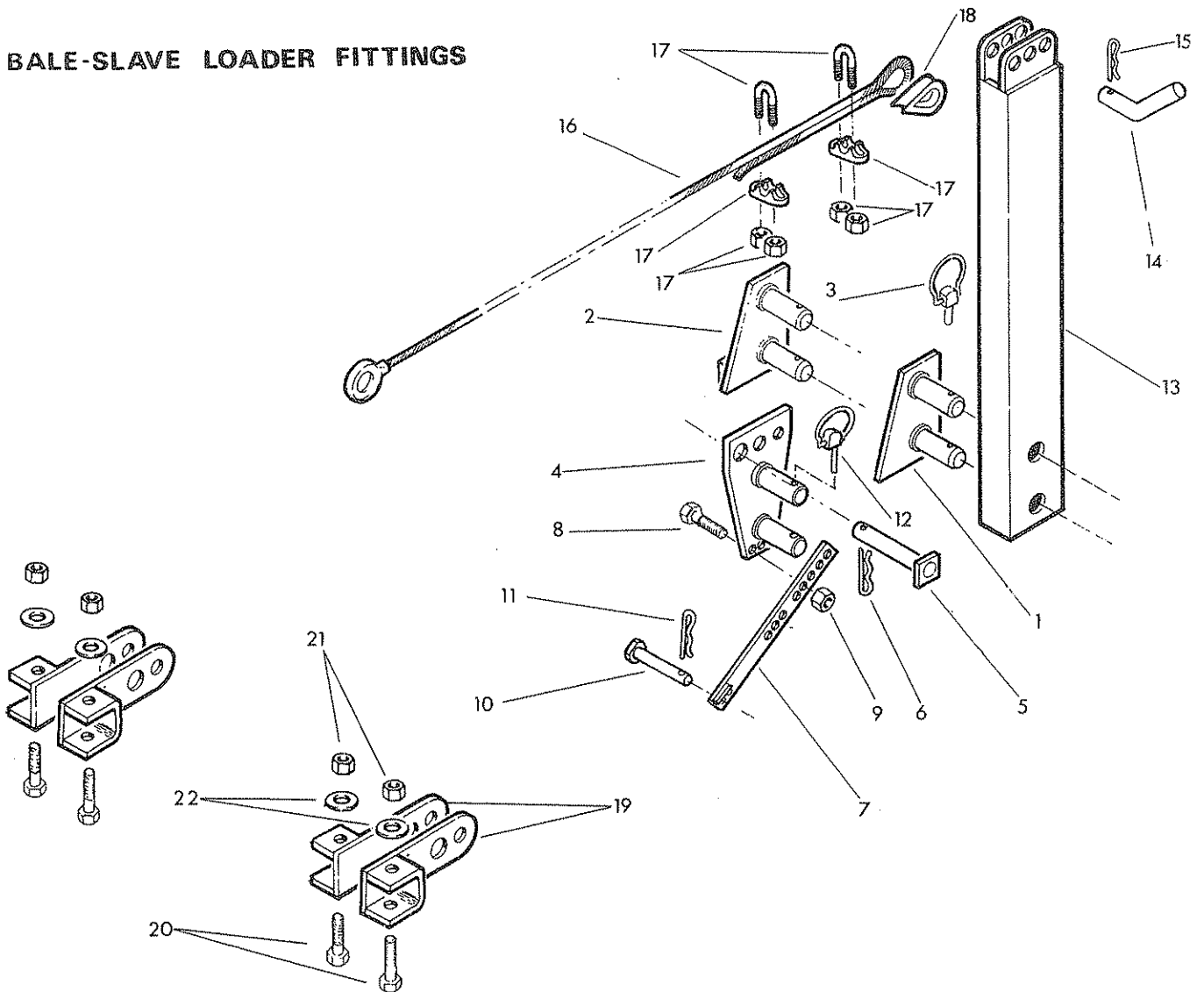
Two types of hydraulic ram are currently fitted to the Bale Slave.  
Each ram is interchangeable complete, but when ordering spares care should be taken to identify which ram is utilised.

Ref.	Part No.	Qty	Description
	11 51 751	1	BALESLAVE GRIPPER RAM COMPRISING:-
1	11 51 763	1	.Ram cylinder
2	11 51 764	1	.Piston rod
3	01 43 006	1	.5/8" BSF Aeronut
4	11 51 768	1	.Washer
5	86 12 127	1	.Piston seal
6	11 51 766	1	.Piston
7	86 00 112	1	.'O' ring
8	11 51 769	1	.Spacer
9	11 51 767	1	.Gland end bush
10	11 51 765	1	.Gland housing
11	86 40 417	1	.Wiper seal
	<b>8699115</b>		<b>Seal Kit</b>

	11 51 771	1	BALESLAVE GRIPPER RAM COMPRISING:-
12	11 51 772	1	.Ram cylinder
13	11 51 773	1	.Piston rod
14	11 51 778	1	.3/4" UNF locknut
15	11 51 777	1	.3/4" UNF nut
16	11 51 775	1	.Spacer
17	86 30 227	1	.Piston seal
18	11 51 776	1	.Collar
19	11 51 774	1	.Gland housing
20	86 40 224	1	.Wiper seal
	<b>8699115</b>		<b>Seal Kit</b>



# BALE-SLAVE LOADER FITTINGS



Ref	Part No	Qty	Description
			WELD-ON BASE TYPE BP1
1	11 51 110	1	Weld-on base
2	11 51 128	1	Weld-on base (MF 40 only)
3	04 31 217	2	Linch pin
			BOLT-ON MULTIFIT TYPE BP2
4	11 51 113	1	Multifit base
5	see chart	1	Boom pivot pin
6	04 31 105	1	Spring cotter
7	11 51 114	1	Staybar
8	92 13 086	1	Bolt M12 x 40 long
9	91 13 006	1	Aeronut M12
10	see chart	1	Ram pivot pin
11	04 31 105	1	Spring cotter
12	04 31 217	2	Linch pin

The following fittings 13-22 (inclusive) are common to both types:-

13	11 51 109	1	Rear pillar
14	11 51 125	1	Fixing pin
15	04 31 105	1	Spring cotter
16	11 51 091	1	Wire rope
17	11 51 850	2	Rope crimp
18	11 51 851	1	½" dia. thimble
19	see chart	see chart	Attachment bracket
20	92 13 185	4	Bolt M12 x 90 long
21	91 43 006	4	Aeronut M12
22	01 00 105	8	Washer

LOADER FITTINGS - CHART - NOTE: (i) Weld-on Base BP1 is suitable for all models therefore excluded from chart.  
(ii) Pin reference letters are die-stamped on pin head.

Loader	Model	Attachment Bracket		Multifit Base BP2: 11-51-113		Remarks
		Qty	Part Number	Boom Pivot Pin Ref/Part Number	Ram Pivot Pin Ref/Part Number	
Massey Ferguson	735: 35 40	4	11 51 096	C 11 51 117	D 11 51 118	*See Note 1:BP1 extra pin
		2	11 51 126	-N/A-	-N/A-	
David Brown	AL2,3,4,6: L7,8,9 LS7,8,9,12:AL7:L12 LFM 8	4	11 51 096	E 11 51 119	C 11 51 117	*See Note 2:Att.bkt. pins
		2	11 51 852	E 11 51 119	C 11 51 117	
		4	11 51 096	-N/A-	-N/A-	
International	LFM9,12:LFH8,9,12 B901	2	11 51 852	-N/A-	-N/A-	*See Note 2:Att.bkt. pins
		4	11 51 096	C 11 51 117	D 11 51 118	
Harvester	B24/1; 1001 A10, A3	4	11 51 096	-N/A-	-N/A-	
		4	11 51 096	E 11 51 119	B 11 51 116	
Grays	Standard:Twawye Series 2	4	11 51 096	C 11 51 117	D 11 51 118	
		4	11 51 096	E 11 51 119	A 11 51 115	
M.I.L.	Mini Master:Milmaster FDX: Master MkII	4	11 51 096	E 11 51 119	B 11 51 116	
		4	11 51 096	-N/A-	-N/A-	
Horndraulic	500,502,503,505,506 520,530,540,550,58 600,602,605,606	4	11 51 096	C 11 51 117	A 11 51 115	
		4	11 51 096	F 11 51 120	A 11 51 115	
Markham	Drive in(pre March 1966) Drive in post March 1966	4	11 51 096	F 11 51 120	B 11 51 116	
		4	11 51 096	B 11 51 116	B 11 51 116	
Wild	968 Plus	4	11 51 096	C 11 51 117	C 11 51 117	*See Note 3: Att.bkt. pins
		2	11 51 129	-N/A-	-N/A-	
Quicke	Multe, 2000	4	11 51 096	-N/A-	-N/A-	
		4	11 51 096	-N/A-	-N/A-	
Leyland		4	11 51 096	F 11 51 120	A 11 51 115	

- NOTE: 1. Pin, Pt.No. 11-51-117, Qty. 1. supplied with special weld on base 11 51 128, c/w spring cotters 04 31 105.  
2. Pin, Pt.No. 11-51-820, Qty 2, supplied with Attachment bracket, c/w spring cotters 04-31-105  
3. Pin, Pt.No. 11-57-041, Qty 2, supplied with Attachment bracket, c/w spring cotters 04-31-105





McConnel Limited, Temeside Works, Ludlow, Shropshire SY8 1JL. England.  
Telephone: 01584 873131. Facsimile: 01584 876463. [www.mcconnel.com](http://www.mcconnel.com)