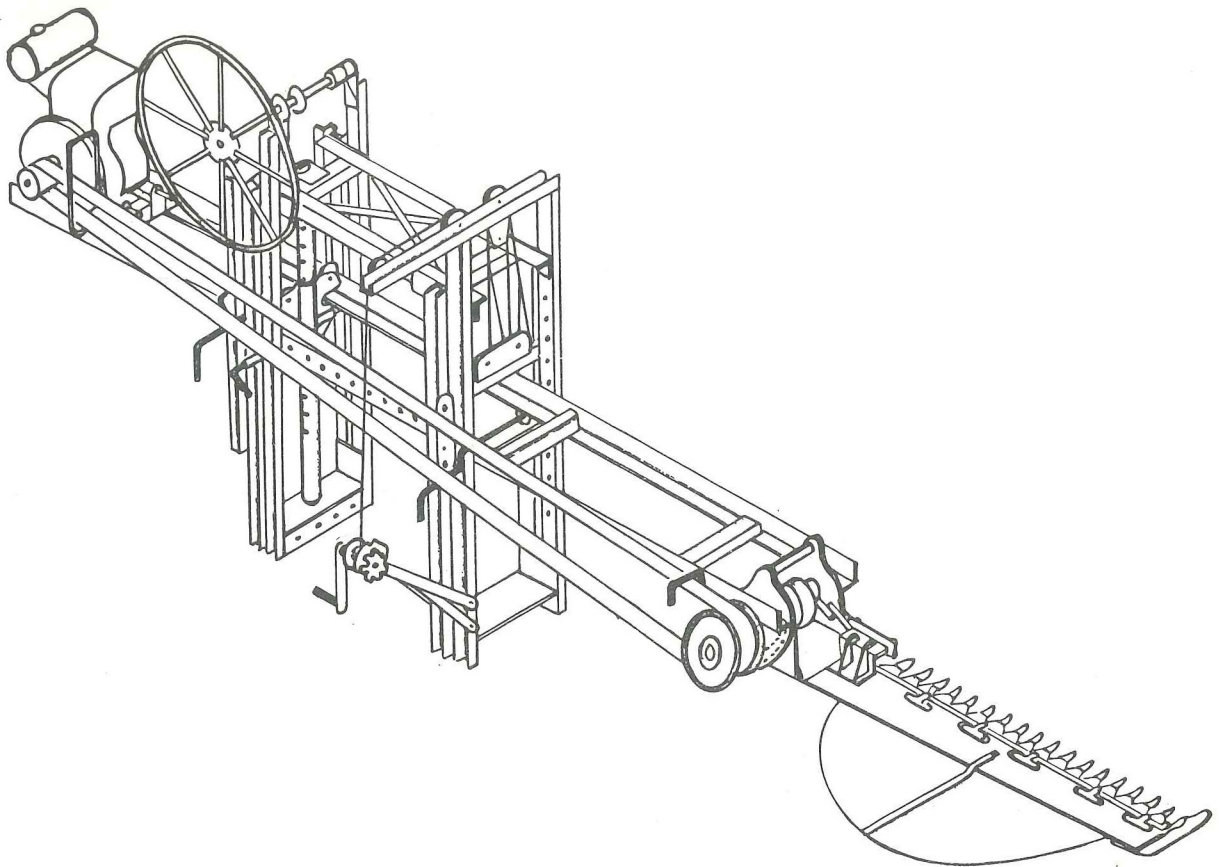
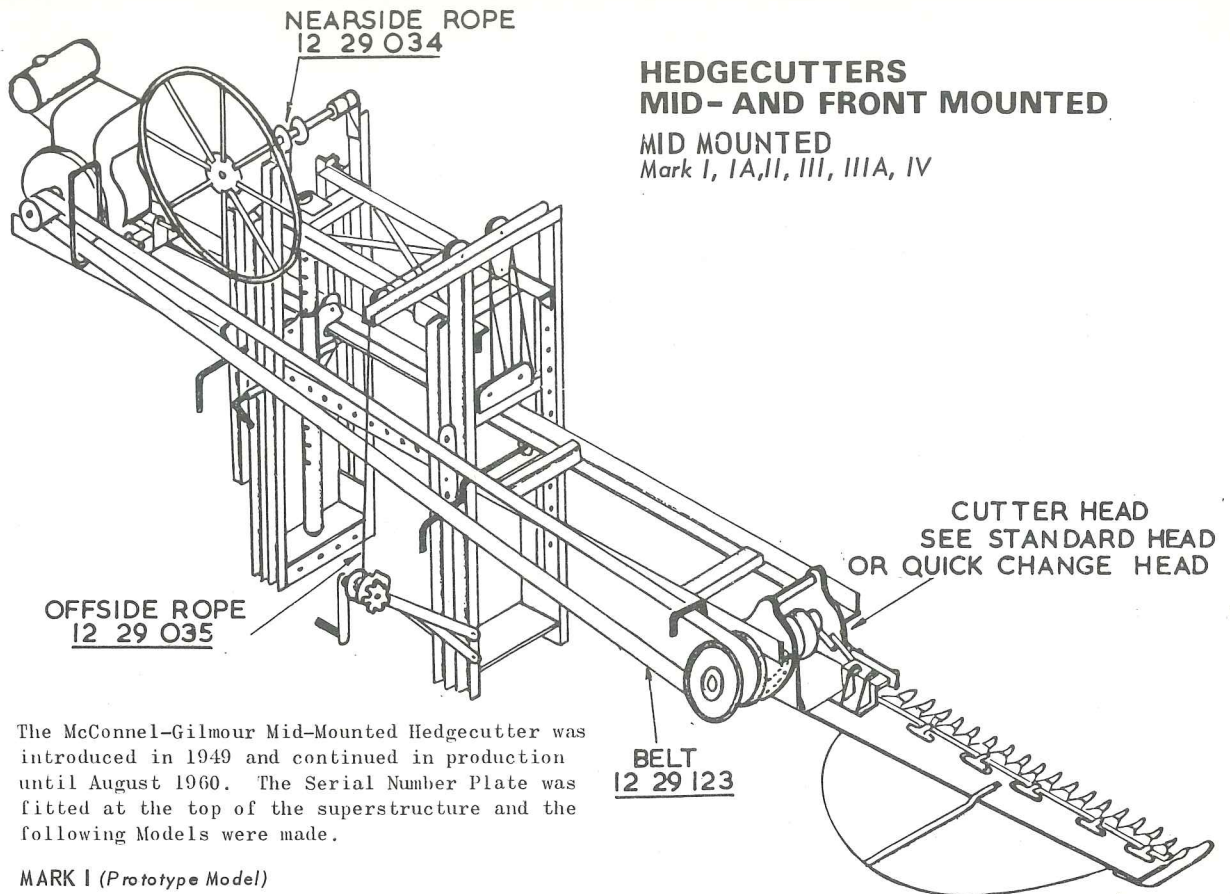


**HEDGECUTTERS
MID- AND FRONT MOUNTED**

MID MOUNTED
Mark I, IA, II, III, IIIA, IV





HEDGE CUTTERS MID- AND FRONT MOUNTED

MID MOUNTED
Mark I, IA, II, III, IIIA, IV

The McConnell-Gilmour Mid-Mounted Hedgecutter was introduced in 1949 and continued in production until August 1960. The Serial Number Plate was fitted at the top of the superstructure and the following Models were made.

MARK I (Prototype Model)

Period of
Manufacture : 16.3.1949 to 21.7.1949
Serial Numbers: 101 to 141
Colour : Dark Green
Fitted to : Old Standard Fordson Tractors only
Cutterbar : 4'6" Mower type (625 rpm)
Cutterhead : Design varied during this period
Engine : Normally 2HP Petter
Drive : 2.1/2" wide Flat Belt
Recognition : Perpendicular superstructure of 2" x 1.1/2" channels with a 12' long transversely mounted beam having the cutterbar at one end and the power unit at the other.
Spares : The only spares now available are Crankshaft, Crankwheel, Pulley, Belt, Knives, Fingers and Knife Clips. These are listed in the 'Standard Head' spares list.

MARK IA (Modified version of Mark I)

Period of
Manufacture : 30.8.1949 to 9.10.1951
Serial Numbers: Between 162 and 1317
Colour : Dark Green
Fitted to : Standard Fordson, Ferguson TE 20 and FE 35, International B.250, Farmall 'II' and Ford Dexta.
Cutterbar : 4'6" Mower type (625 rpm)
Cutterhead : Normally Standard Head, but a few of the later machines may be fitted with a Quick Change Head or Saw Head Attachment.
Engine : Normally 2HP Petter
Drive : 2.1/2" wide Flat Belt
Recognition : Perpendicular superstructure of 2" x 1.1/2" channels, 28.1/4" apart with a 3' dia. handwheel at the top. The 12' long beam may be fitted with a 3' beam extension for extra reach. Some machines had a 12' folding beam.
Spares : See Standard Head spares list or Quick Change Head spares list. Also Hedge Cutter Miscellaneous spares.

BELT
12 29 123

MARK II

This model was manufactured concurrently with the Mark IA and was fitted to the larger tractors such as Ford E27N, Fordson Majors, Nuffield, MF 65, International and Massey Harris tractors.
Serial Numbers: Between 142 and 1163
Specification : As Mark IA except that the width between the upright frames of the superstructure is 35.5/8"
Spares : As Mark IA

MARK III

This model was also manufactured concurrently with the Mark IA and was made specifically for the David Brown 25 & 30 range of tractors.
Serial Numbers: Between 1012 and 1337
Period of
Manufacture : 28.9.1950 to 15.2.1952
Colour : Red
Specification : As Mark IA and Mark II except that the nearside frame of the superstructure sloped inwards at 25°.
Spares : As Mark IA

MARK IIIA

This was a hybrid model consisting of some Mark IV and some Mark III parts. It was in effect a modified version of the Mark IV made specially for David Brown Tractors.
Period of
Manufacture : March 1952 to June 1960
Serial Numbers: Between 1441 and 2018
Colour : Red
Specification : As Mark IV
Spares : As Mark IV

MARK IV

Period of
Manufacture : 23.6.1951 to August 1960
Serial Numbers: Between 1186 and 2063
Colour : Dark Green
Fitted to : Most popular tractors of the period (except David Brown - see Mark IIIA)

- continued

HEDGE CUTTERS MID- AND FRONT MOUNTED

CUTTERHEADS

Standard, Quick Change, Sawhead

FRONT MOUNTED

Model AB

MARK IV - continued

- Cutterhead : Normally a Quick Change Head, but some machines may be fitted with a Saw Head Attachment, and a few early models may have a Standard Head.
- Recognition : Similar to the Mark II but had an adjustable angled nearside upright frame.
- Spares : Quick Change Head Spares list or Standard Head Spares list. Also Hedge Cutter Miscellaneous spares

CUTTER HEADS for

Mid and Front Mounted Models

STANDARD HEAD

Angle of cutterbar changed by removal and replacement of 2 bolts in a radial series of holes. Fitted with a solid Connecting Rod and a cast iron Crankwheel. Was superseded by Quick Change Head in 1952. See Spares list on following pages.

QUICK CHANGE HEAD

A de-luxe cutterhead whereby the angle of the cutterbar is controlled by two spring plungers giving rapid and easy adjustment. The line at which the cutterbar leaves the head can also be adjusted with a simple pin fitting. Manufactured from June 1951 to May 1964. Instructions for use are available on application, quote reference QC/F1/359. See Spares list on following pages.

SAW HEAD ATTACHMENT

A cutterhead fitted with a Circular Saw Blade instead of a reciprocating knife. Used for heavy growth. Saw Head Attachment (S.H.A.) carried a serial number in addition to the machine serial number. This serial number plate is fitted on the pulley guard immediately above the Sawblade.

Period of

Manufacture : 3.1.1952 to 7.1.64

Serial Numbers: 101 to 537 - see notes below on Blades and Fitting.

Sawblades : Ser: Nos: 101-214, 24" dia.
Ser: Nos: 215-360, 24" or 30"
Ser: Nos: 361-537, 30" dia.

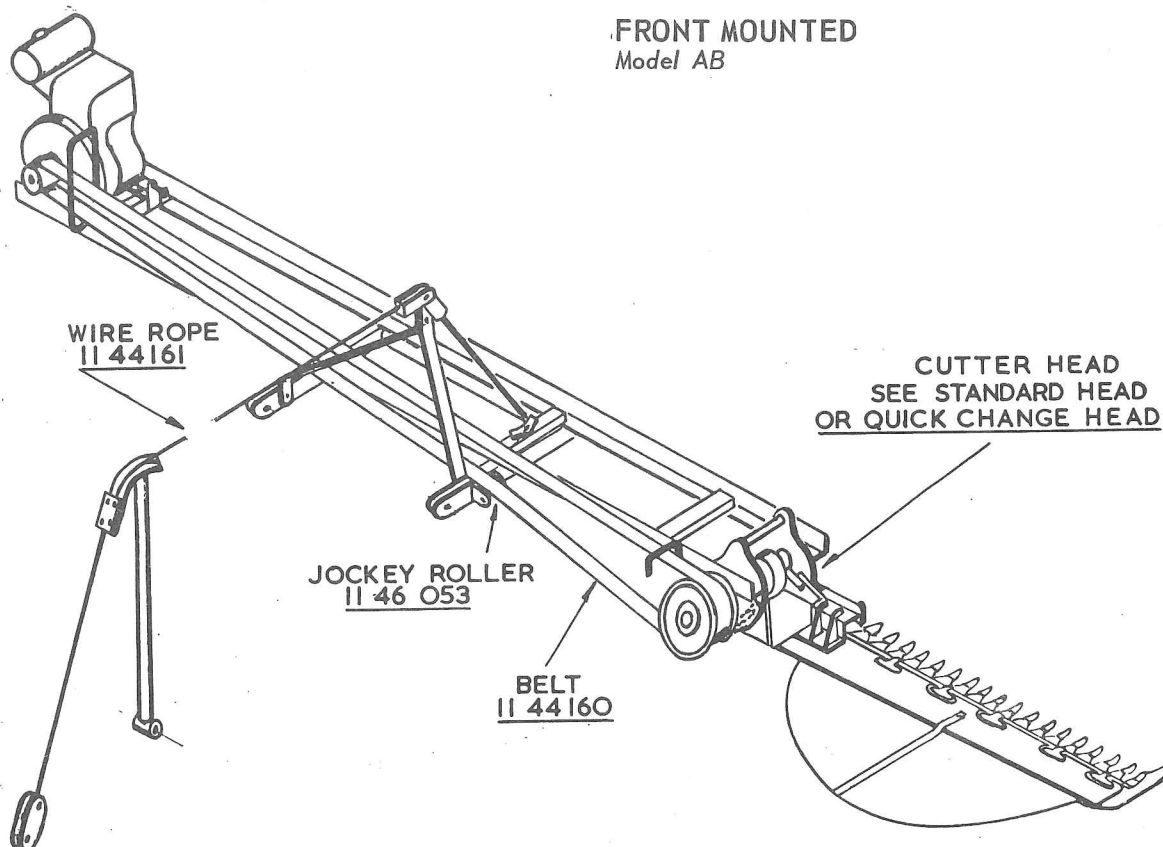
Fitting : Ser: Nos: 101-452 may be fitted to either a Mid-Mounted or Front Mounted (Model AB) Hedger.

Ser: Nos: 453-459 fitted to Model AB Front Mounted only.

Ser: Nos: 460-537 may be fitted to Model AB or Model SL Front Mounted Hedgers.

Spares : The only spares available are as follows:-

Part No:	Description
12-39-041	24" dia. Sawblade
12-39-036	30" dia. Sawblade
12-29-068	Bush - 1.1/4" bore
60-01-003	Bush - 1.1/2" bore
12-57-034	Pulley - 1.1/2" bore, 3/8" Key



FRONT MOUNTED

Model AB

HEDGE CUTTERS MID- AND FRONT MOUNTED FRONT MOUNTED Model AB CUTTERHEADS - SPARE PARTS Standard Head

MODEL AB - See illustration on opposite page

The McConnel front mounted hedging attachment was designed for fitting on to tractor mounted front end (or rear end) loaders. It is referred to as H.C.A. (Hedge cutting attachment). Models were manufactured to suit most loaders on all of the popular tractors, and the machine consists basically of three sets of parts.

1. A 10' long channel or angle section beam with a 4'6" mower type cutterbar (625 rpm) at one end and a 2HP stationary engine at the other end. Drive is by a 2.1/2" wide Flat Belt. This is common to all models.
2. A forecarriage which is attached to the bucket mounting pivots of the loader boom and which carries the beam. This is common to each particular make/model of loader.
3. A set of parallel motion linkage parts to keep the forecarriage and beam level when working. This varies with the tractor and loader.

Period of

Manufacture : 31.1.1951 to 6.5.64

Serial Numbers: 1 to 2736

Colour : Dark Green

Serial Number

Plate Location: On engine end of main beam

CUTTERHEADS

Ref: HC/SP/353
Revised Dec.'67

STANDARD HEAD - MAIN HEAD AND DRIVE

Old Part No.	New Part No.	No. Off	Description
E.1	12-29-125	1	Shaft and Connecting Rod Assembly, complete
E.11	12-29-071	1	Shaft for Pressed Steel Pulley
E.12		1	Shaft for Cast Iron Pulley
E.13	12-29-107	2	Brass Washer
E.14	12-29-112	1	Crankwheel with Key
E.17	12-29-048	1	Key for Crankwheel
E.15	12-29-113	1	Connecting Rod c/w bearing and spacers
E.19	09-01-134	1	Grease Nipple, 45°
E.110	06-00-001	1	Ball Bearing
E.111	12-29-126	1	Spacer, short
E.112	12-29-127	1	Spacer, long
E.16	01-13-107	1	Connecting Rod Nut
E.18	12-29-056	1	Taper Pin
E.2	12-29-134	1	Fixed Head Assembly, comp.
E.22	12-29-074	1	Rear Quadrant c/w Bushes
E.21	12-29-068	2	Bush, Phos: Bronze
E.23	12-29-128	1	Spacer Tube
E.24	12-29-072	1	Spacer Tie Rod
E.25	01-74-007	2	3/4" Slotted Nut
E.26	05-03-123	2	1.1/2" x 1/8" Splitpin
E.27	02-11-146	4	1.3/4" x 5/8" UNF Bolt
	01-41-006	4	5/8" UNF Aeronut
E.28	12-29-073	1	Front Quadrant
	12-29-129	2	1.1/2" x 1/2" Spec: Bolt
E.29	01-11-005	2	1/2" UNF Hex Nut
	01-00-205	2	1/2" dia. Spring Washer
E.210	09-01-121	1	Grease Nipple
E.3	12-29-130	1	Moving Head Assy, comp.
E.31	12-29-259	1	Knife Guide Bracket with Wear Plate
E.32	12-57-046	1	Wear Plate
E.33	60-01-068	2	Rivets
E.34	12-29-076	1	Welded Head Assembly
E.35	12-29-067	1	Long Wearing Plate

Model Identif-

ication : The serial number of the hedge-cutter is prefixed by letters denoting the type of loader and tractor model for which it is manufactured. e.g. H/FM/23 denotes Horndraulic Fordson Major, Ser: No.23.

M/F/1608 denotes M.I.L., Ferguson, Ser: No:1608

Types of

Cutterhead : STANDARD HEAD fitted from 31.1.51 (Ser: No:1) to 16.6.52 (Ser: No:608)

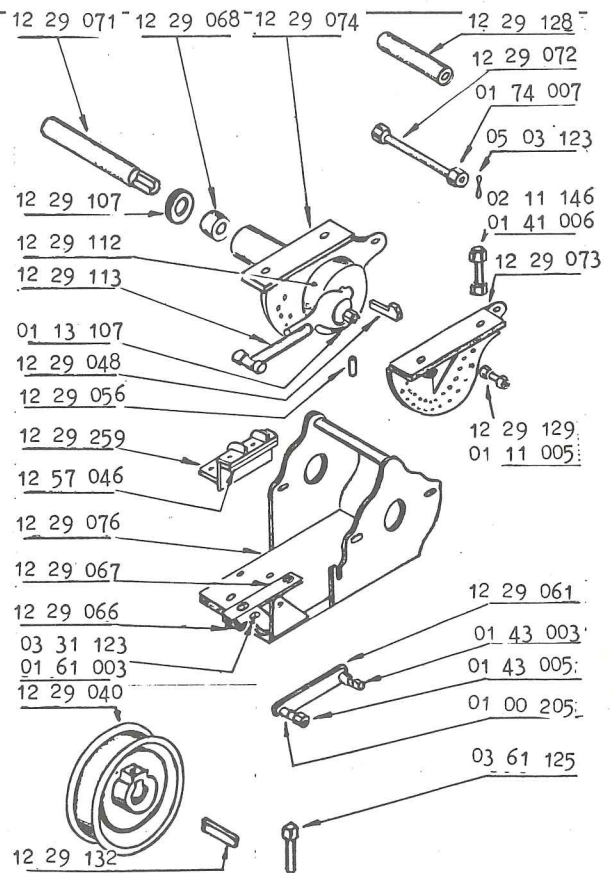
: STANDARD HEAD or QUICK CHANGE

HEAD may be fitted from 16.6.52 (Ser: No:609) to 30.8.54 (Ser: No:1281)

: QUICK CHANGE HEAD fitted to virtually all models from 30.8.54 (Ser:No:1282) to 6.5.64 (Ser: No:2736)

: SAW HEAD ATTACHMENT was introduced in October 1955 and a few machines were fitted with this head instead of the more conventional cutterbar. The first machine to be fitted with a Saw Head Attachment was Ser: No:1667.

Spares : See Standard Head Spares List or Quick Change Head Spares List. Also Hedge-cutter Miscellaneous Spares.



Old Part No.	New Part No.	No. Off	Description
E.36	12-29-066	1	Short Wearing Plate
E.37	03-31-123	3	1.1/2" x 3/8" Csk. Screw
	01-61-003	3	3/8" UNF Nylok Nut
E.38	12-29-061	1	Latch c/w Nuts
E.39	01-43-003	1	3/8" BSF Aeronut
E.310	01-43-005	1	1/2" BSF Aeronut
E.311	01-00-205	1	1/2" dia. Spring Washer

NO GUARANTEE OF DELIVERY CAN BE GIVEN ON SOME OF THE ABOVE SPARES

continued

HEDGECUTTERS MID- AND FRONT MOUNTED CUTTERHEADS - SPARE PARTS

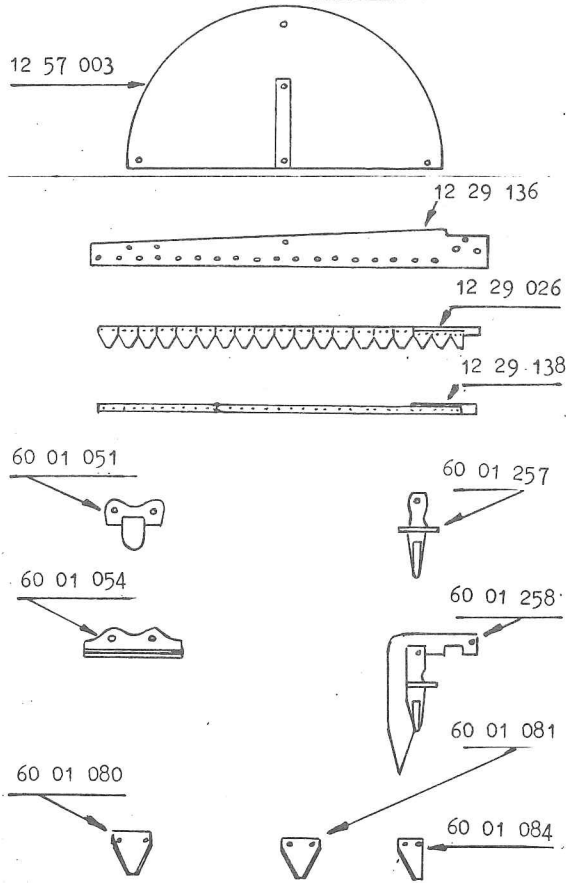
Standard Head

Ref: HC/SP/353
Revised Dec. '67

Old Part No.	New Part No.	No. Off	Description
E.4	-		Pressed Steel Pulley
E.41	-		. Rim
E.42	-		. Clamp Bolts and Nuts
E.43	-		. Split Bush
These parts are not available, use Cast Iron Pulley and new Crankshaft, Pt.No. 12-29-071			
E.5	12-29-108	1	Cast Iron Pulley, comp.
E.51	12-29-040	1	. Pulley only
E.52	12-29-132	1	. 3/8" Key
E.53	03-61-125	1	. Grub Screw

Above items illustrated on preceding page

STANDARD HEAD - CUTTERBAR AND KNIFE



Old Part No.	New Part No.	No. Off	Description
F.1	12-57-254	1	Shield c/w Bolts & Nuts
F.11	12-57-003	1	. Sheet Metal Assembly
F.12	{ 02-11-103	1	. 1.1/4" x 3/8" UNF Bolt
	{ 01-61-003	1	. 3/8" UNF Nylok Nut
F.13	{ 02-11-145	1	. 1.3/4" x 1/2" UNF Bolt
	{ 01-61-005	1	. 1/2" UNF Nylok Nut
F.14	{ 02-11-125	1	. 1.1/2" x 1/2" UNF Bolt
	{ 01-61-005	1	. 1/2" UNF Nylok Nut
F.15	{ 02-11-083	1	. 1" x 3/8" UNF Bolt
	{ 01-61-003	1	. 3/8" UNF Nylok Nut
F.2	12-29-135	1	Cutterbar Assembly, comp. (less Knife)
F.21	12-29-136	1	. Cutterbar, bare
F.22	60-01-257	17	. Finger, McConnel '50'
F.23	60-01-051	1	. Knife Pad, MX
F.24	60-01-053	4	. Knife Pad, N9
F.25	60-01-054	4	. Wearing Plate, N11
F.26	60-01-258	1	. End Finger with End Point
F.27 *	{ 02-11-123	1	. 1.1/2" x 3/8" UNF Bolt
	{ 01-61-003	1	. 3/8" UNF Nylok Nut
F.28 *	{ 02-11-145	1	. 1.3/4" x 1/2" UNF Bolt
	{ 01-61-005	1	. 1/2" UNF Nylok Nut
F.29 Φ	02-11-165	1	. 2" x 1/2" UNF Bolt
	01-61-005	1	. 1/2" UNF Nylok Nut
F.210 Φ	02-11-185	1	. 2.1/4" x 1/2" UNF Bolt
	01-61-005	1	. 1/2" UNF Nylok Nut
F.211 Φ	02-11-206	1	. 2.1/2" x 5/8" UNF Bolt
	01-41-006	1	. 5/8" UNF Aeronut
*End Finger			
Φ Cutterbar Inner End			
F.212	60-01-078	7	. 1.1/2" x 7/16" Finger Bolt and Nut
F.213	60-02-102	2	. 1.3/4" x 7/16" Finger Bolt and Nut
F.214	60-01-079	8	. 2" x 7/16" Finger Bolt and Nut
F.3P	12-29-026	1	Knife complete, Plain
F.3S	12-29-028	1	Knife complete, Serrated
F.3T	12-29-029	1	Knife complete, Sawtooth
F.31	12-29-138	1	. Knife Back, unbushed
F.32			. Half Section 7R/S - not available, use 7R
F.35	60-01-084	1	. Half Section 7R
F.36	60-01-081	2	. Section 7A, Plain
F.37	60-01-080	16	. Section 7B, Plain
F.38	60-01-073	38	. Rivets for Sections - 135 per lb.

MISCELLANEOUS - SPARE PARTS

MID-MOUNTED - ALL MODELS

Old Part No.	New Part No.	No. Off	Description
-	12-29-123	1	2.1/2" Wide Flat Belt, 23'6" long
-	12-29-034	1	Lifting Wire Rope, near-side, 21'0"
-	12-29-035	1	Lifting Wire Rope, off-side, 30'0"

FRONT MOUNTED - MODEL AB

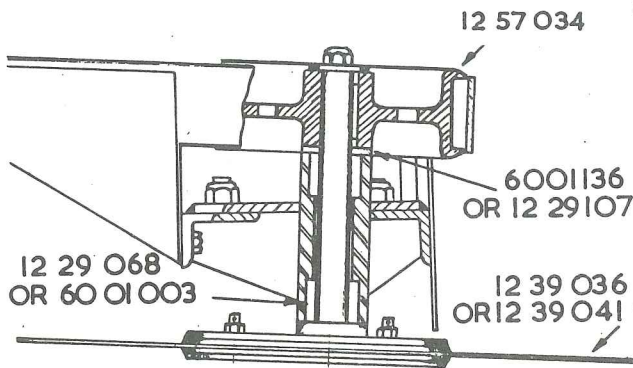
Old Part No.	New Part No.	No. Off	Description
-	11-44-160	1	2.1/2" Wide Flat Belt, 19'3" long.
-	11-46-053	1	Wooden Jockey Roller
-	11-44-161	1	Wire Rope for Parallel Linkage

NO GUARANTEE OF DELIVERY CAN BE GIVEN ON SPARES OTHER THAN THOSE LISTED ABOVE.

Certain parts for conversion from one Model of Loader to another may be available. Enquiries will be considered and the availability, price and delivery will be quoted on application.

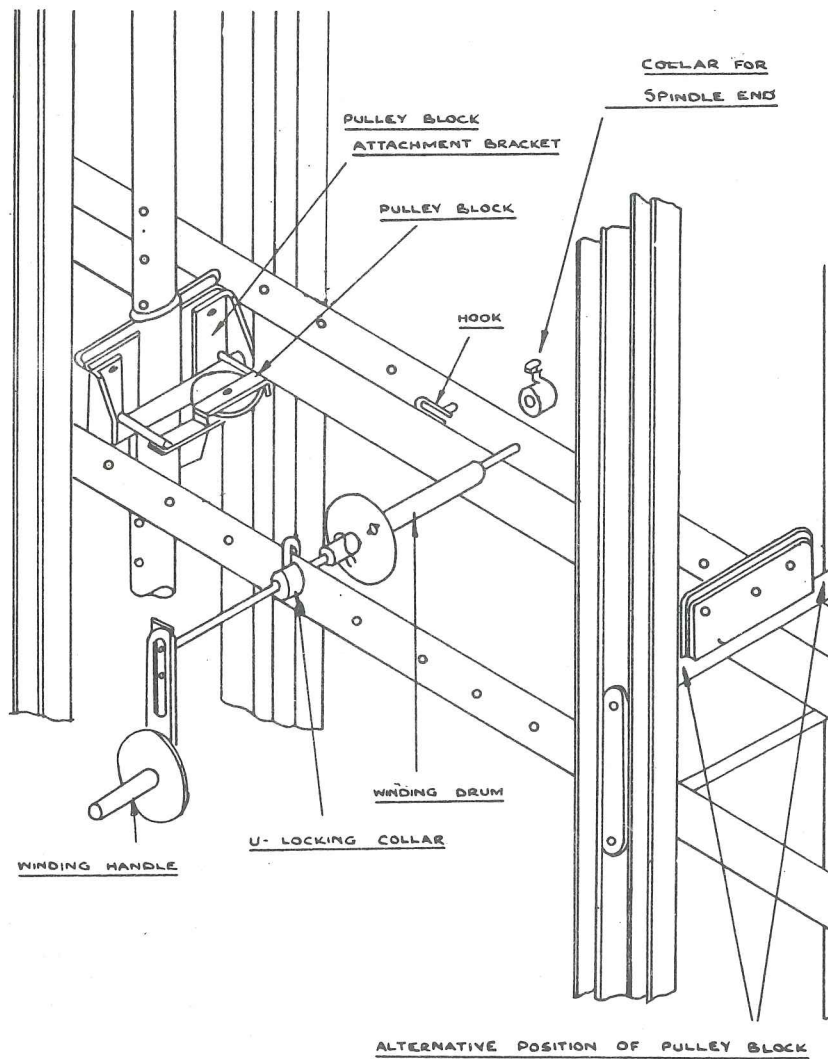
HEDGECUTTERS MID- AND FRONT MOUNTED CUTTERHEADS - SPARE PARTS Saw Head Attachment

SAW HEAD ATTACHMENT



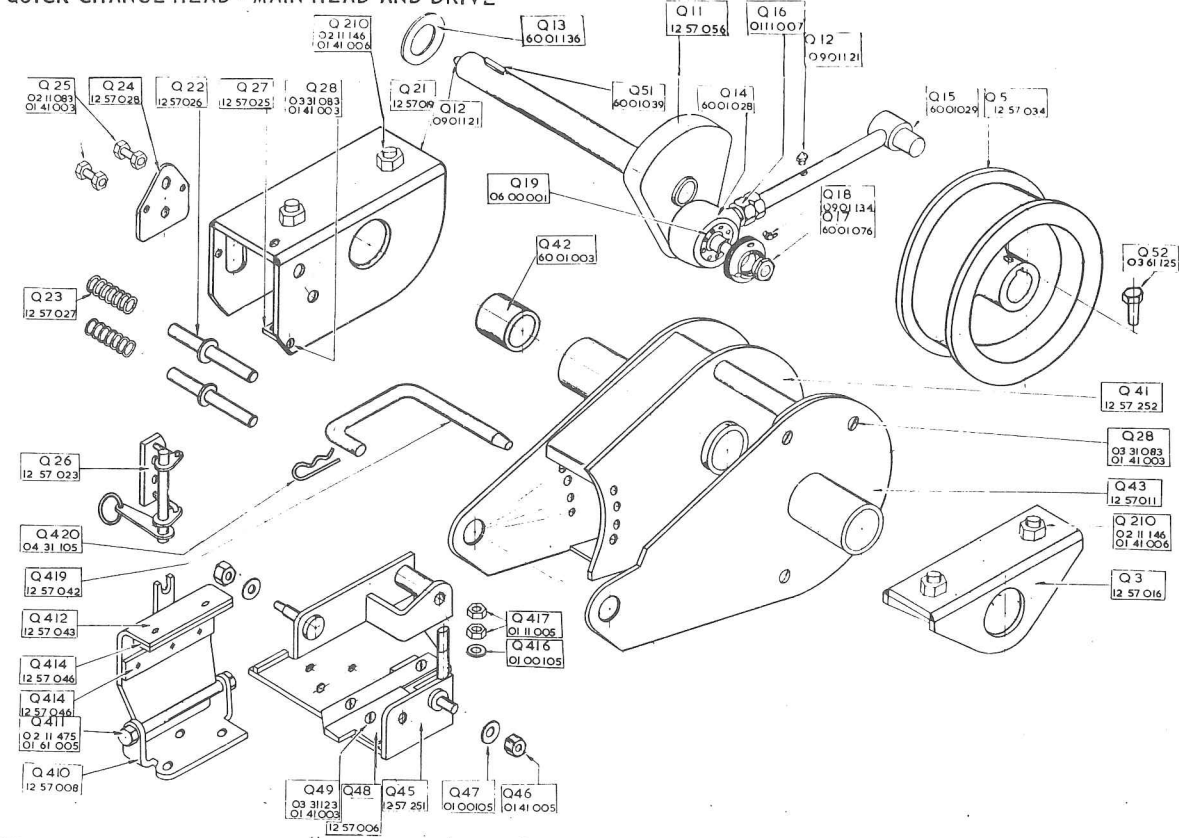
Old Part No.	New Part No.	No. Off	Description
-	12-57-034	1	8" dia. Flanged Pulley, 1.1/2" bore only
-	60-01-003	2	Railko Bush, 1.1/2" bore
-	12-29-068	2	Ph.B. Bush, 1.1/4" bore
-	60-01-136	1	Brass Thrust Washer, 1.1/2" bore
-	12-29-107	1	Brass Thrust Washer, 1.1/4" bore
-	12-29-036	1	Sawblade, 30" dia.
-	12-29-041	1	Sawblade, 24" dia.

SAW HEAD ATTACHMENT - BEAM CONTROLS



HEDGECUTTERS MID- AND FRONT MOUNTED CUTTERHEADS - SPARE PARTS Quick Change Head

QUICK CHANGE HEAD - MAIN HEAD AND DRIVE



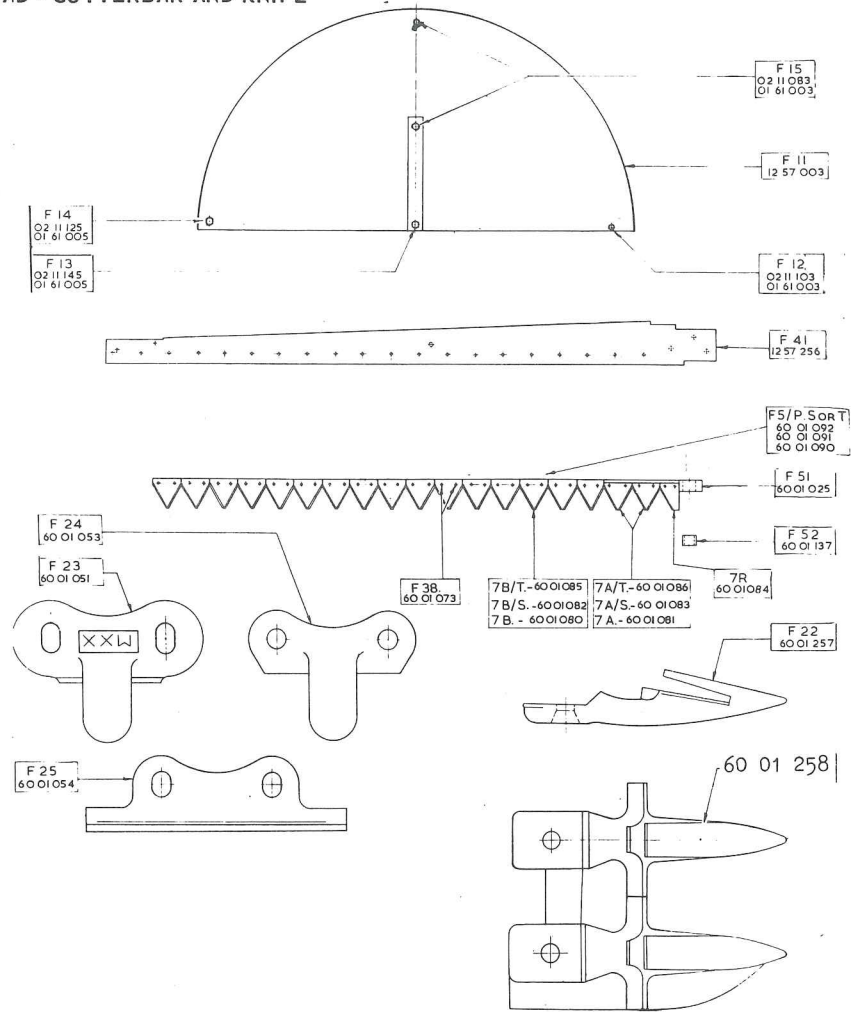
Old Part No.	New Part No.	No. Off	Description
Q.1	12-57-055	1	Shaft and Connecting Rod Assembly, complete
Q.11	12-57-056	1	. Crankshaft
Q.13	60-01-136	1	. Brass Washer
Q.14-16	60-01-027	1	. Con-rod, complete
Q.14	60-01-028	1	.. Con-rod Big End c/w Bearing and Greaser
Q.18	09-01-134	1	... Grease Nipple
Q.19	06-00-001	1	... Ball Bearing
Q.110	60-01-074	1	... Cover Screw
Q.15	60-01-029	1	.. Con-rod, Crook end c/w Greaser
Q.12	09-01-121	1	... Grease Nipple
Q.16	01-11-007	1	.. Con-rod Adjuster Lock Nut
Q.17	60-01-076	1	. Crankpin Nut and Spacer
Q.2	12-57-253	1	Rear Head Bearing Assembly complete
Q.21	12-57-019	1	. Housing
Q.22	12-57-026	2	. Locating Pin
Q.23	12-57-027	2	. Compression Spring
Q.24	12-57-028	1	. Pin Locating Plate
Q.25	{ 02-11-083 01-41-003	2	. 1" x 3/8" UNF Bolt
Q.25	{ 01-41-003	2	. 3/8" UNF Aeronut
Q.26	12-57-023	1	. Withdrawal Lever Assy.
Q.27	12-57-025	1	. Lever Hinge
Q.28	{ 03-31-083 01-41-003	1	. 1" x 3/8" UNF Csk Screw
Q.28	{ 01-41-003	1	. 3/8" UNF Aeronut
Q.29	12-57-054	1	. Rope Toggle & Spring Clip
Q.210	{ 02-11-146 01-41-006	2	. 1.3/4" x 5/8" UNF Bolt
Q.210	{ 01-41-006	2	. 5/8" UNF Aeronut
Q.3	12-57-016	1	Front Head Bearing, comp.
Q.210	{ 02-11-146 01-41-006	2	. 1.3/4" x 5/8" UNF Bolt
Q.210	{ 01-41-006	2	. 5/8" UNF Aeronut

Old Part No.	New Part No.	No. Off	Description
Q.4	12-57-001	1	Moving Head, complete
Q.41	12-57-252	1	. Main Body c/w Bushes and Greaser
Q.42	60-01-003	2	.. Bush
Q.12	09-01-121	1	.. Grease Nipple
Q.43	12-57-011	1	.. Front Plate c/w Bolts
Q.28	{ 03-31-083 01-41-003	4	... 1" x 3/8" UNF Csk Screw
Q.28	{ 01-41-003	4	... 3/8" UNF Aeronut
Q.45	12-57-251	1	. Cradle
Q.46	01-41-005	2	. 1/2" UNF Aeronut
Q.47	01-00-105	2	. 1/2" dia. Washer
Q.48	12-57-006	1	. Bottom Wearing Plate
Q.49	{ 03-31-123 01-41-003	3	. 1.1/2" x 3/8" UNF Csk. Screw
Q.410	{ 01-41-003	1	. 3/8" UNF Aeronut
Q.410	12-57-008	1	. Top Slide Bracket
Q.411	{ 02-11-475 01-61-005	1	. Hinge Bolt
Q.411	{ 01-61-005	1	. 1/2" UNF Nylok Nut
Q.412	12-57-043	1	. Top Slide c/w Wearing Plate
Q.414	{ 12-57-046 60-01-068	2	.. Wearing Plate
Q.414	{ 60-01-068	4	.. Rivet
Q.416	01-00-105	1	. Washer
Q.417	01-11-005	2	. 1/2" UNF Nut
Q.419	12-57-042	1	. Cradle Fixing Pin c/w Spring Cotter
Q.420	04-31-105	1	.. Spring Cotter
Q.5	12-57-034	1	Driving Pulley, complete
Q.51	60-01-039	1	. Key
Q.52	03-61-125	1	. Grubscrew

NO GUARANTEE OF DELIVERY CAN BE GIVEN ON SOME OF THE ABOVE PARTS

HEDGE CUTTERS MID- AND FRONT MOUNTED CUTTERHEADS - SPARE PARTS Quick Change Head

QUICK CHANGE HEAD - CUTTERBAR AND KNIFE

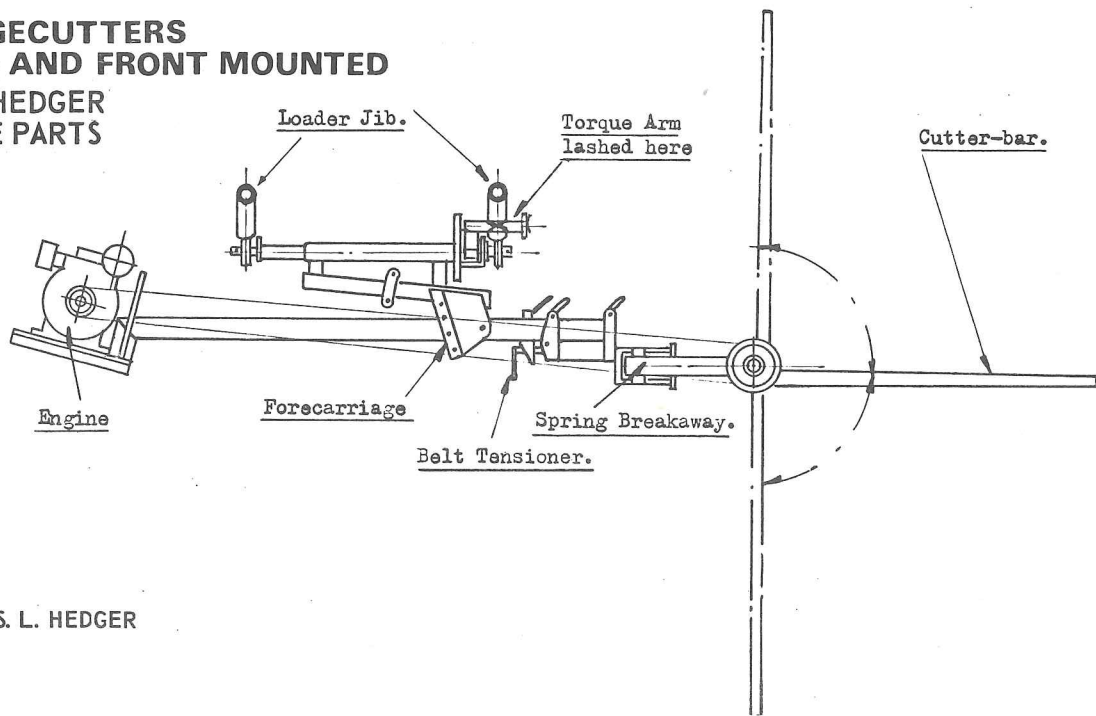


Old Part No.	New Part No.	No. Off	Description
F.1	12-57-254	1	Shield c/w Belts
F.11	12-57-003	1	. Sheet Metal Assembly
F.12	02-11-103	1	. 1.1/4" x 3/8" Bolt, (outer end)
	01-61-003	1	. 3/8" UNF Nylok Nut
F.13	02-11-145	1	. 1.3/4" x 1/2" UNF Bolt, (centre)
	01-61-005	1	. 1/2" UNF Nylok Nut
F.14	02-11-125	1	. 1.1/2" x 1/2" UNF Bolt (inner end)
	01-61-005	1	. 1/2" UNF Nylok Nut
F.15	02-11-083	2	. 1" x 3/8" UNF Bolt, (centre)
	01-61-003	2	. 3/8" UNF Nylok Nut
F.4	12-57-002	1	Cutterbar Assy, complete, less knife
F.41	12-57-256	1	. Cutterbar, bare
F.22	60-01-257	16	. Fingers, McConnel 50
F.23	60-01-051	1	. Knife Pad, inner MXX
F.24	60-01-053	4	. Knife Pad, outer N9
F.25	60-01-054	4	. Wearing Plate
F.26A	60-01-258	1	. End Finger (double, outer)
F.29	02-11-165	2	. 1.3/4" x 1/2" UNF Bolt
	01-61-005	2	. 1/2" UNF Nylok Nut
F.411	02-11-176	1	. 2.1/8" x 5/8" UNF Bolt
	01-41-006	1	. 5/8" UNF Aeronut
F.212	60-01-078	8	. 1.1/2" x 7/16" Finger Bolt and Nut

Old Part No.	New Part No.	No. Off	Description
F.213	60-02-102	2	. 1.3/4" x 7/16" Finger Bolt and Nut
F.214	60-01-079	8	. 2" x 7/16" Finger Bolt and Nut
F5/T	60-01-090	1	Knife complete, Sawtooth section
F5/S	60-01-091	1	Knife complete, Serrated section
F5/P	60-01-092	1	Knife complete, Plain section
F.51	60-01-025	1	. Knife Back c/w Bush
F.52	60-01-137	1	. Bush for Knife Heel
7.B/T	60-01-085	16	. Section, Sawtooth
7.A/T	60-01-086	2	. Section, Sawtooth for Knife Heel
7.B/S	60-01-082	16	. Sections, Serrated
7.A/S	60-01-083	2	. Sections, Serrated for Knife Heel
7.B	60-01-080	16	. Sections, Plain
7.A	60-01-081	2	. Sections, Plain for Knife Heel
7.R	60-01-084	1	. Half Section, Plain all Knives
F.38	60-01-073	38	. Rivet for Sections (135/lb)

HEDGE CUTTERS MID- AND FRONT MOUNTED

S. L. HEDGER
SPARE PARTS



MODEL S. L. HEDGER

This loader mounted light hedging attachment was introduced in December 1959 and remained in production until 2nd July 1963.

Serial Numbers: SL 1 to SL 179

It could be fitted to any conventional type of front or rear end loader. The only part not common to all loaders being the Main Attachment Pins.

Recognition Features:

The forecarriage which is attached to the loader jib and which carries the rectangular tubular beam and cutterbar, has a pendulum action allowing the beam to remain level when the loader jib is raised and lowered.

Adjustable engine rails are fitted allowing most popular engines of the 2 - 3 h.p. class to be fitted.

The cutterbar is spring loaded which allows slight deflection when meeting tough growth, and has a safety breakaway to avoid breakages when encountering hidden obstructions.

The main beam is telescopic to give a low overall width when working in narrow lanes and a greater reach when required for reaching over fences and ditches.

All machines were painted green.

Spare Parts:

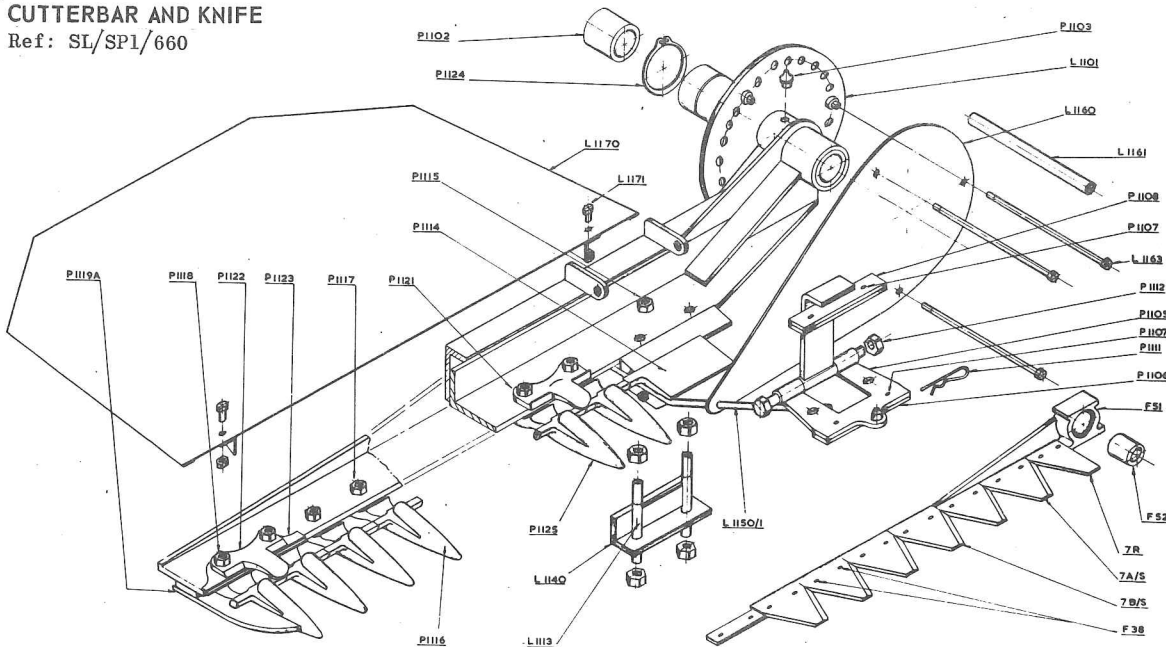
All spares are listed below and many of these are still available ex stock.

Fitting, operating and maintenance instructions are covered by Reference Sheets HSL/FMS/1059, available on application.

When fitting to David Brown Albion loaders, refer to Service Information Sheet 122/959.

CUTTERBAR AND KNIFE

Ref: SL/SPI/660



Old Part No.	New Part No.	No. Off	Description
L.1100	11-77-275	1	Cutterbar Group
L.1101	11-77-252	1	.. Welded Assembly with Bearings
P.1102	60-01-003	2	.. Bearing Bush
P.1103	09-01-121	1	.. Grease Nipple
P.1124	04-01-140	1	.. Circlip
L.1160	11-77-021	1	.. Front Cover Plate
L.1161	11-77-020	3	.. Spacer Tube

Old Part No.	New Part No.	No. Off	Description
L.1163	11-77-004	3	.. Special Bolt
L.1150	60-01-040	1	.. Deflector Bar c/w Bolt and Nut
L.1151	03-31-123	1	... 1.1/2" x 3/8" UNF Csk. Screw
	01-61-003	1	... 3/8" UNF Nylok Nut

continued -

HEDGECUTTERS MID- AND FRONT MOUNTED

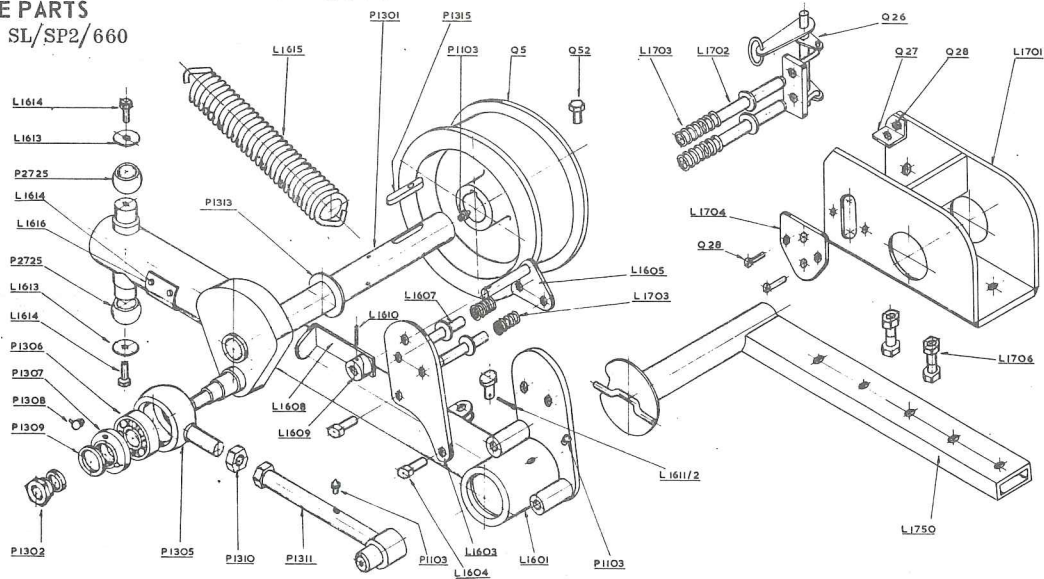
S. L. HEDGER
SPARE PARTS

CUTTERBAR AND KNIFE - continued

Old Part No.	New Part No.	No. Off	Description	Old Part No.	New Part No.	No. Off	Description
P.1104	60-01-067	1	. Knife Head Guide Assembly, comprising:-	P.1118	60-01-079	10	. 2" x 7/16" Finger Bolts and Nuts
P.1105	60-01-013	1	.. Top Slide with Wearing Plate	P.1119A	60-01-258	1	. End Finger Assembly
P.1108	60-01-015	1	.. Latch with Wearing Plate	P.1121	60-01-051	1	. Knife Clip, Inner, MXX
P.1106	12-57-046	2	... Wearing Plates for 60-01-013 & 60-01-015	P.1122	60-01-053	4	. Knife Clip, Outer, N9
P.1107	60-01-068	4	... Rivets for 12-57-046	P.1123	60-01-054	4	. Wearing Plate, N11
P.1111	04-31-105	1	.. Spring Cotter	F.5/S	60-01-091	1	KNIFE, complete, Serrated Section
P.1112	{ 02-11-475	1	.. Hinge Bolt	F.5/T	60-01-090	1	KNIFE, complete, Sawtooth Section
L.1113	{ 01-61-005	1	.. 1/2" UNF Nylok Nut	F.51	60-01-025	1	. Knife Back, bushed
P.1114	{ 11-77-017	1	.. 'H' Piece c/w Nuts	F.52	60-01-137	1	.. Bush for Knife Heel
L.1140	{ 60-01-011	1	. Bottom Wearing Plate	7.B/S *	60-01-082	16	. Section, serrated
L.1140	{ 11-77-018	1	. Back Wearing Plate	7.A/S *	60-01-083	2	. Section, serrated for Knife Heel
P.1115	{ 02-11-085	1	. 1" x 1/2" UNF Bolt				* For F.5/S
L.1170	{ 01-61-005	1	. 1/2" UNF Nylok Nut	7.B/T	Φ 60-01-085	16	. Section, sawtooth
L.1171	{ 60-01-260	1	. Swarf Tray c/w Bolts	7.A/T	Φ 60-01-086	2	. Section, sawtooth for Knife Heel
P.1116	{ 02-11-083	2	.. 1" x 3/8" UNF Bolt				Φ For F.5/T
P.1125	{ 01-61-003	2	.. 3/8" UNF Aeronut	7.R	60-01-084	1	. Half Section, plain all Knives
P.1117	60-01-257	14	. Fingers, McConnell 50	F.38	60-01-073	38	. Rivets for Sections (135/lb for Cutterbar)
P.1125	60-01-271	1	. Double Finger (inner)				
P.1117	60-01-078	7	. 1.1/2" x 7/16" Finger Bolts and Nuts				

DRIVE PARTS

Ref: SL/SP2/660



Old Part No.	New Part No.	No. Off	Description	Old Part No.	New Part No.	No. Off	Description
L.1300	11-77-276	1	CRANKSHAFT AND CONNECTING ROD GROUP, comprising:-	Q.5	12-57-034	1	DRIVING PULLEY, complete
P.1301	12-57-056	1	. Crankshaft only	Q.52	03-61-125	1	. Grubscrew
P.1302	60-01-076	1	. Con-rod Retaining Nut and Spacer	P.1315	60-01-039	1	. Key
P.1304	60-01-027	1	. Connecting Rod complete, comprising:-	L.1600	11-77-254	1	HORIZONTAL BEARING ASSY, complete
P.1305	60-01-028	1	.. Big End with Bearing	L.1601	11-77-255	1	. Welded Unit
P.1306	06-00-001	1	... Ball Bearing	L.1603	11-77-009	1	. End Plate
P.1307	60-01-074	1	... Cover Screw	L.1604	03-11-083	2	. 1" x 1/2" UNF Setscrew
P.1308	09-01-134	1	... Grease Nipple	L.1605	11-77-010	1	. Plunger
P.1309	60-01-075	2	... Felt Washer	L.1703	11-77-002	2	. Spring
P.1310	01-11-007	1	.. 3/4" UNF Hex. Nut	L.1607	11-77-011	2	. Locking Pin
P.1311	60-01-029	1	.. Crook End c/w Greaser	P.1103	09-01-121	1	. Grease Nipple
P.1103	09-01-121	1	... Grease Nipple	L.1608	11-77-012	1	. Cam Lever
P.1313	60-01-136	1	. Brass Washer	L.1609	11-77-003	1	. Cam
				L.1610	05-01-085	1	. Grooved Pin

-continued-

HEDGE CUTTERS MID- AND FRONT MOUNTED

S. L. HEDGER
SPARE PARTS

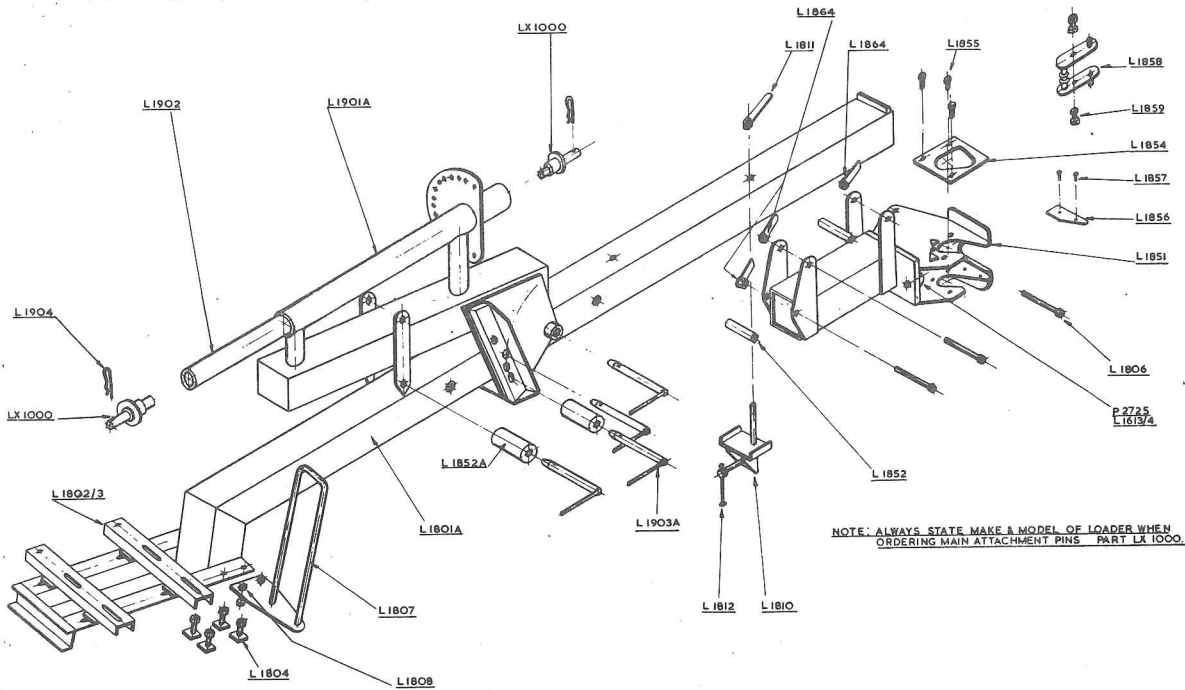
DRIVE PARTS - continued

Old Part No.	New Part No.	No. Off	Description
L.1611	11-77-015	1	. Pin c/w Splitpin
L.1612	05-03-125	1	.. 1.1/2" x 3/16" Splitpin
P.2725	60-02-018	2	. Spherical Roller
L.1613	11-77-014	2	. Special Washer
L.1614	03-11-063	4	. 3/4" x 1/4" UNF Setscrew
L.1616	11-77-007	1	. Wearing Plate
L.1615	11-77-001	1	TENSION SPRING
L.1700	11-77-260	1	LEVELLING BOX ASSEMBLY, comprising:-
L.1701	11-77-041	1	. Welded Housing
L.1702	11-77-048	2	. Locking Pin
L.1703	11-77-002	2	. Spring

Old Part No.	New Part No.	No. Off	Description
L.1704	11-77-049	1	. Pin Locating Plate
Q.28	{ 03-31-083	3	. 1" x 3/8" UNF Csk.Screw
	{ 01-41-003	3	. 3/8" UNF Aeronut
Q.26	12-57-023	1	. Withdrawal Lever Assy.
Q.27	12-57-025	1	. Lever Hinge
L.1705	12-57-054	1	. Trip Cord
L.1706	{ 02-11-206	2	. 2.1/2" x 5/8" UNF Bolt
	{ 01-41-006	2	. 5/8" UNF Aeronut
L.1750	11-77-050	1	TORQUE ARM WITH LASHING ROPE
L.1751	11-77-088	1	. Lashing Rope only
L.1752	11-77-087	1	FLAT BELT, complete

MAIN BEAM AND FORECARRIAGE

Ref: SL/SP3/660



Old Part No.	New Part No.	No. Off	Description
L.1800A	11-77-277	1	MAIN BEAM (Engine End)
L.1801A	11-77-257	1	. Welded Assy.(Engine End)
L.1802	11-77-037	2	. Engine Rails c/w Nuts (For Clinton Engine use Pt.No. 11-77-058)
L.1803	01-41-005	2	.. 1/2" UNF Aeronut
L.1804	11-77-038	4	. Engine Attachment Bolts and Nuts (state engine)
L.1807	11-77-051	1	. Belt Guide c/w Bolts and Nuts
L.1808	{ 02-11-083	2	.. 1" x 3/8" UNF Bolt
	{ 01-61-003	2	.. 3/8" UNF Nylok Nut
L.1809	11-77-278	1	. Belt Tensioner, comp.
L.1810	11-77-034	1	.. Bracket only
L.1811	11-77-035	1	.. Wing Nut
L.1812	11-77-036	1	.. Adjuster Screw
L.1850	11-77-279	1	SLIDING BEAM, complete, comprising:-
L.1851	11-77-258	1	. Welded Unit
L.1852	11-77-028	2	. Beam Rollers
L.1806	02-11-385	3	. Special Bolt

Old Part No.	New Part No.	No. Off	Description
L.1864	11-77-029	3	. Wing Nut
P.2725	60-02-018	1	. Spherical Roller
L.1613	11-77-014	1	. Special Washer
L.1614	03-11-063	1	. 3/4" x 1/4" UNF Setscrew
L.1854	11-77-030	2	. Guide Plate c/w Bolts
L.1855	03-11-083	6	.. 1" x 3/8" UNF Bolt
L.1856	11-77-027	1	. Wearing Pad c/w Rivets
L.1857	11-77-089	2	.. Rivet for 11-77-027
L.1858	11-77-031	1	. Spring Catch
L.1859	11-77-032	2	. Special Bolt and Nut for Spring Catch
L.1900A	11-77-280	1	CARRIAGE, complete, comprising:-
L.1901A	11-77-259	1	. Welded Unit
L.1902	11-77-040	1	. Inner Sliding Tube
L.1852A	11-77-055	2	. Beam Roller
L.1903A	11-77-039	4	. Pin c/w Spring Cotter
L.1904	04-31-105	4	.. Spring Cotter
LX.1000	11-77-052	2	MAIN ATTACHMENT PINS - State Model of Loader
L.1904	04-31-105	2	. Spring Cotter



McConnel Limited, Temeside Works, Ludlow, Shropshire SY8 1JL. England.
Telephone: 01584 873131. Facsimile: 01584 876463. www.mcconnel.com